

HVAC SHOWCASE

2025



YOUR SATISFACTION, OUR PRIORITY

At **ORTECH**, we are unwavering in our commitment to delivering superior LED lighting products, HVAC solutions, and electrical supplies. Our pledge is to ensure every offering excels in performance, reliability, and energy efficiency.

Rely on **ORTECH** for cutting-edge, premium solutions that elevate your environment and consistently surpass your expectations.

Since our inception in 2004, we have been dedicated to providing the most reliable construction materials, including lighting, electrical, and ventilation products.

As a national supplier, **ORTECH** products are now trusted in over 2 million homes across Canada and the USA.



FANS

- AC MOTOR BATHROOM FANS 3
- DC MOTOR BATHROOM FANS 6
- GRILLES 15
- INLINE FANS 16

ERV | HRV

- ENERGY AND HEAT RECOVERY VENTILATORS 23

HEAT PUMP

- SOLO 29

RANGEHOODS

- KITCHEN RANGEHOODS 31

HEATERS

- ELECTRIC HEATERS 33

CONTROLS

- SENSORS, SWITCHES, CONTROLLERS TIMERS 35

ACCESSORIES

- FIRE DAMPERS 39
- DUCTWORK, LINT TRAPS, AIR VALVES, DRYER BOX, VAPOUR BARRIERS, ACCESS DOORS & PANELS

SAY GOODBYE TO HUMIDITY

ORTECH's AC Motor Bathroom Fans are designed to provide efficient ventilation, ensuring your bathroom stays fresh and free from moisture buildup. These fans feature powerful AC motors that deliver reliable performance while maintaining energy efficiency, making them an excellent choice for residential and commercial use.

Engineered for quiet operation, **ORTECH's** bathroom fans offer effective air circulation without disturbing noise, creating a comfortable environment. Their durable construction and sleek design seamlessly blend into any bathroom décor, adding both functionality and style.

In addition to their performance, these fans are easy to install and maintain. With versatile options to suit different bathroom sizes, **ORTECH's** AC motor bathroom fans ensure optimal air quality and protection against humidity, mold, and mildew.

AC
MOTOR



UNIVERSAL
SERIES

3YR WARRANTY



OD-1109PB

110 CFM Universal Series Fan With Rugged Polymeric Resin Blower

- Static Pressure in inches w.g.: 0.1 | 0.25
- Air Volume (CFM): 110 | 92
- Noise (Sones): 0.9 | N/A
- Fan Watts: 30W | N/A
- Duct Diameter: 6"
- Power: 120V/60Hz
- Housing Size: 11-3/8"x10-1/2"x7-5/8"
- Grille Dimensions: 13"x14"
- Fan Weight: 10.2 lbs

- Comes with torsion spring clips that helps mount grille evenly
- Known for its high efficiency and long lasting reliability



UNIVERSAL
SERIES

3YR WARRANTY



OD-1209PB

120 CFM Universal Series Fan With Rugged Polymeric Resin Blower

- Static Pressure in inches w.g.: 0.1 | 0.25
- Air Volume (CFM): 120 | 101
- Noise (Sones): 0.9 | N/A
- Fan Watts: 30W | N/A
- Duct Diameter: 6"
- Power: 120V/60Hz
- Housing Size: 11-3/8"x10-1/2"x7-5/8"
- Grille Dimensions: 13"x14"
- Fan Weight: 10.2 lbs

- Comes with torsion spring clips that helps mount grille evenly
- Known for its high efficiency and long lasting reliability



UNIVERSAL
SERIES

3YR WARRANTY



OD-1505PB

150 CFM Universal Series Fan With Rugged Polymeric Resin Blower

- Static Pressure in inches w.g.: 0.1 | 0.25
- Air Volume (CFM): 150 | 115
- Noise (Sones): 0.5 | N/A
- Fan Watts: 35W | N/A
- Duct Diameter: 6"
- Power: 120V/60Hz
- Housing Size: 11-3/8"x10-1/2"x7-5/8"
- Grille Dimensions: 13"x14"
- Fan Weight: 10.2 lbs

- Comes with torsion spring clips that helps mount grille evenly
- Known for its high efficiency and long lasting reliability



PREMIUM
SERIES

3YR WARRANTY



OD45-9005PB

90 CFM Premium Series Fan For More Efficient Air Transfer & Operation

- Static Pressure in inches w.g.: 0.1 | 0.25
- Air Volume (CFM): 90, 45 | 67, 15
- Noise (Sones): 0.5, 0.4 | N/A
- Fan Watts: 25W, 16W | 23W, 14W
- Duct Diameter: 6"
- Power: 120V/60Hz
- Housing Size: 11-3/8"x10-1/2"x7-5/8"
- Grille Dimensions: 13"x14"
- Fan Weight: 10.2 lbs

- 6" detachable polymeric collar
- Operates at lower RPM's to provide quieter operation



PREMIUM
SERIES

3YR WARRANTY



OD45-1109PB

110 CFM Premium Series Fan For More Efficient Air Transfer & Operation

- Static Pressure in inches w.g.: 0.1 | 0.25
- Air Volume (CFM): 110, 45 | 100, 15
- Noise (Sones): 1.1, 0.4 | N/A
- Fan Watts: 30W, 16W | 29W, 14W
- Duct Diameter: 6"
- Power: 120V/60Hz
- Housing Size: 11-3/8"x10-1/2"x7-5/8"
- Grille Dimensions: 13"x14"
- Fan Weight: 10.2 lbs

- 6" detachable polymeric collar
- Operates at lower RPM's to provide quieter operation



UNIVERSAL
SERIES

3YR WARRANTY



ODC-8003

80 CFM Next Generation Universal Series
Fan With Capacitor Motor

- Static Pressure in inches w.g.: 0.1 | 0.25
- Air Volume (CFM): 80 | 62
- Noise (Sones): 0.3 | 0.9
- Fan Watts: 16W | N/A
- Duct Diameter: 4"
- Power: 120V/60Hz
- Housing Size: 9"x9"x5-3/4"
- Grille Dimensions: 11-7/8"x11-3/8"
- Fan Weight: 7.4 lbs

- Ultra silent with high performance
- Known for its high efficiency and long lasting reliability



UNIVERSAL
SERIES

3YR WARRANTY



ODC-9006

90 CFM Next Generation Universal Series
Fan With Capacitor Motor

- Static Pressure in inches w.g.: 0.1 | 0.25
- Air Volume (CFM): 90 | 73
- Noise (Sones): 0.6 | N/A
- Fan Watts: 16W | N/A
- Duct Diameter: 4"
- Power: 120V/60Hz
- Housing Size: 9"x9"x5-3/4"
- Grille Dimensions: 11-7/8"x11-3/8"
- Fan Weight: 7.4 lbs

- Ultra silent with high performance
- Known for its high efficiency and long lasting reliability



UNIVERSAL
SERIES

3YR WARRANTY



ODC-1109

110 CFM Next Generation Universal
Series Fan With Capacitor Motor

- Static Pressure in inches w.g.: 0.1 | 0.25
- Air Volume (CFM): 116 | 106
- Noise (Sones): 1.1 | N/A
- Fan Watts: 26.6W | 23.6W
- Duct Diameter: 4"
- Power: 120V/60Hz
- Housing Size: 9"x9"x5-3/4"
- Grille Dimensions: 11-7/8"x11-3/8"
- Fan Weight: 7.4 lbs

- 6" detachable polymeric collar
- Operates at lower RPM's to provide quieter operation

E
N
H
A
N
C
E
D

A
N
D

I
M
P
R
O
V
E
D



UNIVERSAL
SERIES

3YR WARRANTY



ODE-5004

50 CFM Next Generation Universal Series
Fan With Capacitor Motor

- Static Pressure in inches w.g.: 0.1 | 0.25
- Air Volume (CFM): 50 | 41
- Noise (Sones): 0.4 | 1.4
- Fan Watts: 16W | N/A
- Duct Diameter: 4"
- Power: 120V/60Hz
- Housing Size: 7-1/2"x7-1/4"x5-5/8"
- Grille Dimensions: 8-5/8"x9-1/2"
- Housing: Galvanized Steel

- Very quiet fan for ceiling mounted hold
- Known for its high efficiency and long lasting reliability



UNIVERSAL
SERIES

3YR WARRANTY



ODE-8007

80 CFM Next Generation Universal Series
Fan With Capacitor Motor

- Static Pressure in inches w.g.: 0.1 | 0.25
- Air Volume (CFM): 80 | 69
- Noise (Sones): 0.7 | 1.5
- Fan Watts: 19W | N/A
- Duct Diameter: 4"
- Power: 120V/60Hz
- Housing Size: 7-1/2"x7-1/4"x5-5/8"
- Grille Dimensions: 8-5/8"x9-1/2"
- Fan Weight: Galvanized Steel

- Very quiet fan for ceiling mounted hold
- Known for its high efficiency and long lasting reliability



UNIVERSAL
SERIES

3YR WARRANTY



ODE-9010

90 CFM Next Generation Universal Series
Fan With Capacitor Motor

- Static Pressure in inches w.g.: 0.1 | 0.25
- Air Volume (CFM): 90 | 78
- Noise (Sones): 1.0 | 1.5
- Fan Watts: 20W | N/A
- Duct Diameter: 4"
- Power: 120V/60Hz
- Housing Size: 7-1/2"x7-1/4"x5-5/8"
- Grille Dimensions: 8-5/8"x9-1/2"
- Fan Weight: Galvanized Steel

- Very quiet fan for ceiling mounted hold
- Known for its high efficiency and long lasting reliability



UNIVERSAL
SERIES

1YR WARRANTY



OD-5034

50 CFM Next Generation Universal Series
Fan With A Shaded Pole Motor

- Static Pressure in inches w.g.: 0.1
- Air Volume (CFM): 50
- Noise (Sones): 3.4
- Fan Watts: 44.2W
- Duct Diameter: 3"
- Power: 120V/60Hz
- Housing Size: 7-1/2"x7-1/4"x3-5/8"
- Grille Dimensions: 8-3/4"x9-1/2"
- Housing: Galvanized Steel

- OD-5034H-CONT = 6pc contractor pack for fan housing only
- OD-5034M-CONT = 6pc contractor pack for fan motor assembly only



UNIVERSAL
SERIES

1YR WARRANTY



OD-7035

70 CFM Next Generation Universal Series
Fan With A Shaded Pole Motor

- Static Pressure in inches w.g.: 0.1
- Air Volume (CFM): 70
- Noise (Sones): 3.5
- Fan Watts: 64.5W
- Duct Diameter: 4"
- Power: 120V/60Hz
- Housing Size: 7-1/2"x7-1/4"x3-5/8"
- Grille Dimensions: 8-3/4"x9-1/2"
- Fan Weight: Galvanized Steel

- OD-7035H-CONT = 6pc contractor pack for fan housing only
- OD-7035M-CONT = 6pc contractor pack for fan motor assembly only



ELEVATE YOUR AIR QUALITY

ORTECH's DC Motor Bathroom Fans offer superior ventilation with energy-efficient DC motors designed to maximize performance while minimizing power consumption. These fans deliver consistent airflow, ensuring that your bathroom stays fresh and free from excess humidity, all while lowering your energy bills.

Known for their ultra-quiet operation, these fans provide powerful ventilation without the disruptive noise, creating a peaceful and comfortable bathroom environment. The sleek design and durable build make them a perfect addition to any modern bathroom, blending seamlessly into the space.

Installation is quick and easy, with versatile options to suit various bathroom sizes and needs. **ORTECH's** DC motor fans are also designed for longevity and low maintenance, ensuring reliable air quality control while protecting your bathroom

DC
MOTOR



UNIVERSAL
SERIES

5YR WARRANTY



ODD-110-18PB

80 to 140 CFM Universal Series DC Motor Fan With Built-in Humidity Sensor

■ Static Pressure in inches w.g.:	0.1 0.25, 0.1 0.25, 0.1 0.25
■ Air Volume (CFM):	80, 110, 140
■ Noise (Sones):	0.5 N/A, 0.3 N/A, 0.4 N/A

■ Fan Watts:	5.6W, 8.5W, 13W
■ Duct Diameter:	6"
■ Power:	120V/60Hz
■ Housing Size:	11-3/8"x10-1/2"x7-5/8"
■ Grille Dimensions:	13"x13-3/4"
■ Fan Weight:	10.2 lbs

■ One of the quietest fans available in the market today



SUPER SLIM
SERIES

5YR WARRANTY



ODDSS-100-3

Three Speeds Super Slim Series Fan With 4" Polymeric Collar

■ Static Pressure in inches w.g.:	0.1 0.25, 0.1 0.25, 0.1 0.25
■ Air Volume (CFM):	50, 80, 100
■ Noise (Sones):	0.8 N/A, 1.0 N/A, 1.5 N/A

■ Fan Watts:	3.7W 6.5W, 6.7W 10W, 10.2W 14.4W
■ Duct Diameter:	4" (oval)
■ Power:	120V/60Hz
■ Housing Size:	10-1/4"x10-1/4"x3-3/8"
■ Grille Dimensions:	13-3/4"x13"
■ Fan Weight:	6.5 lbs

■ One of the slimmest fans in HVAC industry, Capable of wall or ceiling mounting



SUPER SLIM
SERIES

5YR WARRANTY



ODDSS-100-3HS

Three Speeds Super Slim Series Fan With Built-in Humidity Sensor

■ Static Pressure in inches w.g.:	0.1 0.25, 0.1 0.25, 0.1 0.25
■ Air Volume (CFM):	50, 80, 100
■ Noise (Sones):	0.8 N/A, 1.0 N/A, 1.5 N/A

■ Fan Watts:	3.7W 6.5W, 6.7W 10W, 10.2W 14.4W
■ Duct Diameter:	4" (oval)
■ Power:	120V/60Hz
■ Housing Size:	10-1/4"x10-1/4"x3-3/8"
■ Grille Dimensions:	13-3/4"x13"
■ Fan Weight:	6.5 lbs

■ One of the slimmest fans in HVAC industry, Capable of wall or ceiling mounting





COMPACT
SERIES



ODD-110S

Get The Best Of Both Worlds With This
3 Speed Quiet And Sleek Fan

■ Static Pressure in inches w.g.:	0.1
■ Air Volume (CFM):	50 80 110
■ Noise (Sones):	0.3 0.6 0.9
■ Fan Watts:	4W 5W 10W
■ Duct Diameter:	4"
■ Power:	120V/60Hz
■ Housing Size:	9"x9"x5-3/4"
■ Grille Dimensions:	11-7/8"x11-3/8"
■ Fan Weight:	7 lbs

- Ultra silent with high performance
- Perfect for ceiling mounting



COMPACT
SERIES



ODD-70-1

70 CFM Next Generation Single Speed
Compact Series Fan

■ Static Pressure in inches w.g.:	0.1 0.25
■ Air Volume (CFM):	75 62
■ Noise (Sones):	0.4 1.1
■ Fan Watts:	4.5W 7.4W
■ Duct Diameter:	4"
■ Power:	120V/60Hz
■ Housing Size:	9"x9"x5-3/4"
■ Grille Dimensions:	11-7/8"x11-3/8"
■ Speed:	70 CFM

- Hanger bars not included - Sold separately
- Known for its high efficiency and long lasting reliability



SUPREME
SERIES



ODD-300-3

3 Speed Supreme Series Fan Designed
To Operate Continuously And Quietly

■ Static Pressure in inches w.g.:	0.1 0.25, 0.1 0.25, 0.1 0.25
■ Air Volume (CFM):	200 173, 250 217, 300 270
■ Noise (Sones):	2.0 N/A, 3.0 N/A, 0.4 N/A
■ Fan Watts:	25.2W, 39W, 52W
■ Duct Diameter:	6"
■ Power:	120V/60Hz
■ Housing Size:	11-3/8"x10-1/2"x7-5/8"
■ Grille Dimensions:	13"x13-3/4"
■ Fan Weight:	12.5 lbs
■ Heavy duty 4 point mounting bracket adjustable up to 24" from centre	



SUPREME
SERIES



ODD-500-4

4 Speed Supreme Series Fan Designed
To Operate With High Efficiency

■ Static Pressure in inches w.g.:	0.1 0.25, 0.1 0.25, 0.1 0.25, 0.1 0.25
■ Air Volume (CFM):	202 153, 301 251, 400 335, 504 445
■ Noise (Sones):	0.4 1.4, 1.4 2.0, 3.0 3.0, 4.5 5.5
■ Fan Watts:	12W 18W, 22W 27W, 38W 41W, 66W 70W
■ Duct Diameter:	8"
■ Power Fan Weight:	120V/60Hz 12.5 lbs
■ Housing Size:	14-1/4"x14-1/4"x9"
■ Grille Dimensions:	17-1/4"x17-3/4"
■ Double hanger bar mounting brackets that are adjustable up to 26 inch span	



COMPACT
SERIES



ODD-110HS

3 Speed Quiet And Sleek Compact Series
Fan With Humidity Sensor

■ Static Pressure in inches w.g.:	0.1
■ Air Volume (CFM):	50 80 110
■ Noise (Sones):	0.3 0.6 0.9
■ Fan Watts:	4W 5W 10W
■ Duct Diameter:	4"
■ Power:	120V/60Hz
■ Housing Size:	9"x9"x5-3/4"
■ Grille Dimensions:	11-7/8"x11-3/8"
■ Fan Weight:	7 lbs

- Ultra silent with high performance
- Perfect for ceiling mounting



COMPACT
SERIES



ODD-90-1

90 CFM Next Generation Single Speed
Compact Series Fan

■ Static Pressure in inches w.g.:	0.1 0.25
■ Air Volume (CFM):	95 78
■ Noise (Sones):	0.7 1.2
■ Fan Watts:	7.2W 9W
■ Duct Diameter:	4"
■ Power:	120V/60Hz
■ Housing Size:	9"x9"x5-3/4"
■ Grille Dimensions:	11-7/8"x11-3/8"
■ Speed:	90 CFM

- Hanger bars not included - Sold separately
- Known for its high efficiency and long lasting reliability



COMPACT
SERIES



ODD-110HS+MS

3 Speed Quiet And Sleek Compact Series
Fan With Humidity Sensor & Motion Sensor

■ Static Pressure in inches w.g.:	0.1
■ Air Volume (CFM):	50 80 110
■ Noise (Sones):	0.3 0.6 0.9
■ Fan Watts:	4W 5W 10W
■ Duct Diameter:	4"
■ Power:	120V/60Hz
■ Housing Size:	9"x9"x5-3/4"
■ Grille Dimensions:	11-7/8"x11-3/8"
■ Fan Weight:	7 lbs

- Ultra silent with high performance
- Perfect for ceiling mounting



COMPACT
SERIES



ODD-110-1

110 CFM Next Generation Single Speed
Compact Series Fan

■ Static Pressure in inches w.g.:	0.1 0.25
■ Air Volume (CFM):	112 94
■ Noise (Sones):	1 1.3
■ Fan Watts:	9.8W 10.8W
■ Duct Diameter:	4"
■ Power:	120V/60Hz
■ Housing Size:	9"x9"x5-3/4"
■ Grille Dimensions:	11-7/8"x11-3/8"
■ Speed:	110 CFM

- Hanger bars not included - Sold separately
- Known for its high efficiency and long lasting reliability



NEXT GEN
SERIES



ODDE-50ES

Advanced Next Generation Fans With
DC Motor Technology

■ Static Pressure in inches w.g.:	0.1 0.25
■ Air Volume (CFM):	50 39
■ Noise (Sones):	2.0 N/A
■ Fan Watts:	7W 7.6W
■ Duct Diameter:	3"
■ Power:	120V/60Hz
■ Housing Size:	7-1/4" x 7-1/2" x 3-5/8"
■ Grille Dimensions:	9-1/2" x 8-5/8"

OPTIONAL - LED Light Grille

- Can be ceiling or wall mounted and capable of exhausting air quietly and efficiently



NEXT GEN
SERIES



ODDE-70

Advanced Next Generation Fans With
DC Motor Technology

■ Static Pressure in inches w.g.:	0.1 0.25
■ Air Volume (CFM):	70 56
■ Noise (Sones):	3.0 N/A
■ Fan Watts:	12.2W 12.5W
■ Duct Diameter:	4"
■ Power:	120V/60Hz
■ Housing Size:	7-1/4" x 7-1/2" x 3-5/8"
■ Grille Dimensions:	9-1/2" x 8-5/8"

- Can be ceiling or wall mounted and capable of exhausting air quietly and efficiently

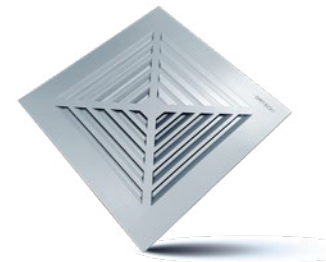
WHERE FUNCTION MEETS FASHION

ORTECH's bathroom fan grilles are the perfect accessory for upgrading your ventilation system. Designed to complement both AC and DC motor bathroom fans, these grilles blend functionality with style, ensuring that your bathroom stays fresh and inviting. With a sleek design, they effortlessly fit into any décor while providing optimal airflow to eliminate odors and moisture.

Crafted from high-quality materials, **ORTECH's** grilles are built to last. They feature a durable finish that resists corrosion and wear, ensuring long-term performance in the humid bathroom environment. Installation is a breeze, allowing you to quickly upgrade your existing setup or complete a new installation with ease.

Beyond just aesthetics, these grilles play a vital role in improving indoor air quality. By effectively directing airflow, they help reduce humidity levels and prevent the buildup of mold and mildew.

FOR AC & DC
MOTOR FANS



OD-ALG

- Size: 13"x13"
- Colour: Brushed Nickel Finish

COMPATIBLE FANS

ODD-110, ODD-110-18PB, OD45-9005PB, OD45-1109PB, OD-9005PB, OD-1109PB, OD-1209PB, OD-1505PB

*Torsion springs included for easy installation



OD-G0809

- Size: 9"x9-1/2"
- Colour: White

COMPATIBLE FANS

ODE-5004, ODE-8007, ODE-9010

*Torsion springs included for easy installation



OD-G1010

- Size: 10-1/4"x10-1/4"
- Colour: White

COMPATIBLE FANS

ODD30-8010

*Torsion springs included for easy installation



OD-G1111

- Size: 11-7/8"x11-3/8"
- Colour: White

COMPATIBLE FANS

ODC-1109, ODC-8003, ODC-9006

*Torsion springs included for easy installation



OD-G1314

- Size: 13-1/8"x14"
- Colour: White

COMPATIBLE FANS

ODD-110, ODD-110-18PB, OD45-9005PB, OD45-1109PB, OD-9005PB, OD-1109PB, OD-1209PB, OD-1505PB

*Torsion springs included for easy installation



OD-STG

- Size: 13-1/8"x14"
- Colour: White

COMPATIBLE FANS

ODD-110, ODD-110-18PB, OD45-9005PB, OD45-1109PB, OD-9005PB, OD-1109PB, OD-1209PB, OD-1505PB, ODDSS-100-3, ODDSS-100-3HS

*Torsion springs included for easy installation



OD-LLG

- Size: 11-7/16"x11-13/16"
- Colour: White
- Wattage | Lumens: 11W | 800 lmn
- Colour Temp.: 4200K

COMPATIBLE FANS

ODD-110S, ODD-110HS, ODD-110HS+MS, ODC-1109, ODC-8003, ODC-9006

*Torsion springs included for easy installation



OD-LLG-MS

- Size: 11-7/16"x11-13/16"
- Colour: White
- Wattage | Lumens: 11W | 350 lmn
- Colour Temp.: 4200K

COMPATIBLE FANS

ODD-110S, ODD-110HS, ODD-110HS+MS, ODC-1109, ODC-8003, ODC-9006

* LED light with motion sensor & torsion springs



OD-LTG

- Size: 13-1/8"x14"
- Colour: White
- Wattage: Max. 26W
- Base Socket: E26 base

COMPATIBLE FANS

ODD-110, ODD-110-18PB, OD-9005PB, OD-1109PB, OD-1209PB, OD-1505PB

* Comes with Night Kit and Night Light



OD-LTGLED

- Size: 13-1/8"x14"
- Colour: White
- Wattage: 3W
- Night Wattage: 13W
- Lumens: 900 lmn
- Colour Temp.: 4000K

COMPATIBLE FANS

ODD-110, ODD-110-18PB, OD45-9005PB, OD45-1109PB, OD-9005PB, OD-1109PB, OD-1209PB, OD-1505PB

*Torsion springs included for easy installation





OD-DC1010LEDMSG

- Size: 10"x10-1/4"
- Colour: White
- Wattage: 11W
- Night Wattage: 2W
- Lumens: 960 lmn
- Night Lumens: 220 lmn
- Colour Temp.: 4000K

COMPATIBLE FANS

ODD30-8010

*Torsion springs included for easy installation



OD-DCLEDMSG

- Size: 13-1/8"x14"
- Colour: White
- Wattage: 11W
- Night Wattage: 2W
- Lumens: 960 lmn
- Night Lumens: 220 lmn
- Colour Temp.: 4000K

COMPATIBLE FANS

ODD-110, ODD-110-18PB

*Torsion springs included for easy installation



ODE-LLG

- Size: 8-7/16"x9-3/4"
- Colour: White
- Wattage: 11W
- Lumens: 1000 lmn
- Colour Temp.: 4200K

COMPATIBLE FANS

ODE-5004, ODE-8007, ODE-9010

*Torsion springs included for easy installation



ODC-G1

- Size: 10-3/4"x10-3/4"
- Colour: White

COMPATIBLE FANS

ODC-1109, ODC-8003, ODC-9006

*Torsion springs included for easy installation



ODE-G2

- Size: 9-1/2"x9-1/2"
- Colour: White

COMPATIBLE FANS

ODE-5004, ODE-8007, ODE-9010

*Torsion springs included for easy installation



BOOST THE POWER OF YOUR DRYER

ORTECH's Dryer Booster Fans are designed to enhance the efficiency of residential and commercial dryer systems by improving airflow. These fans help reduce drying time, prevent lint build-up, and minimize the risk of dryer overheating by boosting the ventilation in long duct runs. The compact and energy-efficient design ensures seamless integration into your existing HVAC setup, making it a reliable choice for maintaining dryer performance while extending its lifespan.



DRYER BOOSTER FANS

3YR WARRANTY



SDF200

5" Single Intake Dryer Booster Fan For Ceiling And Wall Mounting

- Amps (FLA): 0.9
- Fan Speed (RPM): 2600
- Noise (Sones): 2.5
- Intake: 5"
- Discharge: 5"
- Power: 120V/60Hz
- Fan Dimensions: 10-1/2"x11"x6"
- Fan Weight: 12 lbs

SMOOTH & QUIET OPERATION

- Built-in back draft damper
- Comes with a built-in overload disconnect for safety & longer motor life

Model	0.1 SP	0.2 SP	0.3 SP	0.4 SP	0.5 SP	0.6 SP	0.7 SP	0.8 SP	0.9 SP	1.0 SP
SDF200	206CFM	203CFM	196CFM	190CFM	183CFM	176CFM	168CFM	160CFM	153CFM	144CFM



DRYER BOOSTER FANS

3YR WARRANTY



SDF200-2

4" Dual Intake Dryer Booster Fan For Ceiling And Wall Mounting

- Amps (FLA): 0.9
- Fan Speed (RPM): 2600
- Noise (Sones): 2.5
- Intake: 4"
- Discharge: 5"
- Power: 120V/60Hz
- Fan Dimensions: 10-1/2"x11"x6"
- Fan Weight: 12 lbs

DOUBLE INLET COLLARS

- Built-in back draft damper
- Comes with a built-in overload disconnect for safety & longer motor life

Model	0.1 SP	0.2 SP	0.3 SP	0.4 SP	0.5 SP	0.6 SP	0.7 SP	0.8 SP	0.9 SP	1.0 SP
SDF200-2	235CFM	222CFM	211CFM	205CFM	195CFM	186CFM	175CFM	169CFM	158CFM	150CFM

ENHANCED COMFORT AND EFFICIENCY

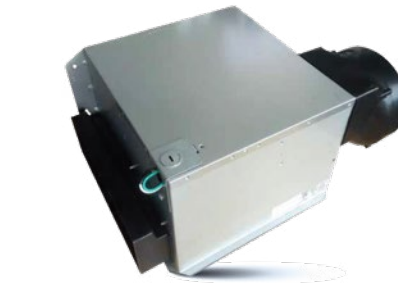
The **ORTECH ODDIN** Universal Series Inline Fans are designed to provide efficient and continuous ventilation with unmatched convenience. Featuring a built-in low-speed controller, these fans are engineered to run 24/7, ensuring that local building code requirements for continuous air circulation are easily met. This makes them ideal for both residential and commercial environments where constant airflow is essential.

One of the standout features is the built-in time delay, allowing the fan to keep running for an additional minutes after being turned off. This delay ensures complete ventilation, further enhancing air quality and energy efficiency. Whether you're managing moisture or odors, this feature offers customized control for any space.

Capable of ceiling or wall mounting, these inline fans are designed for quiet, discreet operation.



**ODDIN
SERIES**



**UNIVERSAL
SERIES**

5YR WARRANTY



ODDIN-110

90 to 140 CFM Universal Series Inline Fan With 6" Detachable Metal Collar

- Static Pressure in inches w.g.: 0.1 | 0.25, 0.1 | 0.25, 0.1 | 0.25
- Air Volume (CFM): 90 | 73, 110 | 100, 120 | 110, 140 | 125
- Noise (Sones): 0.5, 0.9, 1.2, 1.6
- Fan Watts: 8.1W, 10.3W, 12.2W, 15.6W
- Duct Diameter: 6"
- Power: 120V/60Hz
- Housing Size: 11-5/6"x10-1/2"x7-3/4"
- Intake Dimensions: 10"x3-1/4"
- Fan Weight: 10.5 lbs
- When the fan is turned off, it has a built-in time delay that can be set between 3 to 30 minutes

SUPREME SERIES, VENTILATION REDEFINED!



**SUPREME
SERIES**

5YR WARRANTY



ODDIN-300-3

3 Speed 220 to 340 CFM Supreme Series Fan with 8" Diameter Metal Duct

- Static Pressure in inches w.g.: 0.2, 0.2, 0.2
- Air Volume (CFM): 340, 310, 220
- Noise (Sones): 5.8, 4.6, 3.1
- Fan Watts: 99W, 79W, 37W
- Duct Diameter: 8"
- Power: 120V/60Hz
- Housing Size: 14-1/8"x14-1/8"x9"
- Intake Dimensions: 10"x3"

- Built-in 3 speed switch
- Fan should be remote mounted and is capable of exhausting or supplying air quietly & efficiently



STAY COOL, STAY QUIET

The **ORTECH OIF Series** Inline Fans are designed for both commercial and residential applications, offering speed controllable functionality to meet varying airflow needs. Featuring a robust construction with painted cold-rolled steel housing, these fans are built for durability and performance. They excel in high static pressure applications, ensuring effective air circulation in challenging environments.

OIF4-140

**4" Duct Commercial / Residential Grade
100% Speed Controllable Inline Fan**

- Current (Amp): **0.80**
- Fan Speed (RPM): **2450**
- Noise (Sones): **2.1**
- Wattage: **92W**
- Duct Diameter: **4"**
- Power: **120V/60Hz**
- Room Size Capacity: **100-150 ft²**

EFFICIENT & QUIET OPERATION

- Includes permanently lubricated ball bearings that are maintenance free
- Complies with CSA C22.2 No.113 standard clause 12 for Dryer Exhaust Duct Power Ventilators



OIF SERIES
INLINE FANS



OIF5-190

**5" Duct Commercial / Residential Grade
100% Speed Controllable Inline Fan**

- Current (Amp): **0.86**
- Fan Speed (RPM): **2420**
- Noise (Sones): **2.6**
- Wattage: **102W**
- Duct Diameter: **5"**
- Power: **120V/60Hz**
- Room Size Capacity: **150-200 ft²**

EFFICIENT & QUIET OPERATION

- Includes permanently lubricated ball bearings that are maintenance free
- Complies with CSA C22.2 No.113 standard clause 12 for Dryer Exhaust Duct Power Ventilators



OIF SERIES
INLINE FANS



OIF6-260

**6" Duct Commercial / Residential Grade
100% Speed Controllable Inline Fan**

- Current (Amp): **0.88**
- Fan Speed (RPM): **2620**
- Noise (Sones): **2.8**
- Wattage: **105W**
- Duct Diameter: **6"**
- Power: **120V/60Hz**
- Room Size Capacity: **200-280 ft²**

EFFICIENT & QUIET OPERATION

- Includes permanently lubricated ball bearings that are maintenance free
- Complies with CSA C22.2 No.113 standard clause 12 for Dryer Exhaust Duct Power Ventilators



OIF SERIES
INLINE FANS



OIF10-670

**10" Duct Commercial / Residential Grade
100% Speed Controllable Inline Fan**

- Current (Amp): **1.88**
- Fan Speed (RPM): **2660**
- Noise (Sones): **4.4**
- Wattage: **220W**
- Duct Diameter: **10"**
- Power: **120V/60Hz**
- Room Size Capacity: **580-680 ft²**

EFFICIENT & QUIET OPERATION

- Includes permanently lubricated ball bearings that are maintenance free
- Complies with CSA C22.2 No.113 standard clause 12 for Dryer Exhaust Duct Power Ventilators



OIF SERIES
INLINE FANS



OIF8-560

**8" Duct Commercial / Residential Grade
100% Speed Controllable Inline Fan**

- Current (Amp): **2.03**
- Fan Speed (RPM): **2530**
- Noise (Sones): **3.7**
- Wattage: **235W**
- Duct Diameter: **8"**
- Power: **120V/60Hz**
- Room Size Capacity: **400-580 ft²**

EFFICIENT & QUIET OPERATION

- Includes permanently lubricated ball bearings that are maintenance free
- Complies with CSA C22.2 No.113 standard clause 12 for Dryer Exhaust Duct Power Ventilators



OIF SERIES
INLINE FANS



OIF12-880

**12" Duct Commercial / Residential Grade
100% Speed Controllable Inline Fan**

- Current (Amp): **1.80**
- Fan Speed (RPM): **2730**
- Noise (Sones): **5.0**
- Wattage: **210W**
- Duct Diameter: **12"**
- Power: **120V/60Hz**
- Room Size Capacity: **680-780 ft²**

EFFICIENT & QUIET OPERATION

- Includes permanently lubricated ball bearings that are maintenance free
- Complies with CSA C22.2 No.113 standard clause 12 for Dryer Exhaust Duct Power Ventilators



OIF SERIES
INLINE FANS



Model	0.00 SP	0.10 SP	0.20 SP	0.30 SP	0.40 SP	0.50 SP	0.60 SP	0.80 SP	0.90 SP	1.00 SP
OIF4-140	152CFM	147CFM	144CFM	135CFM	132CFM	123CFM	120CFM	111CFM	108CFM	100CFM
Model	0.00 SP	0.10 SP	0.20 SP	0.30 SP	0.40 SP	0.52 SP	0.64 SP	0.76 SP	0.90 SP	1.10 SP
OIF5-190	222CFM	200CFM	181CFM	161CFM	139CFM	118CFM	93CFM	69CFM	41CFM	0CFM
Model	0.00 SP	0.10 SP	0.20 SP	0.30 SP	0.40 SP	0.60 SP	0.80 SP	1.00 SP	1.10 SP	1.30 SP
OIF6-260	238CFM	221CFM	199CFM	175CFM	155CFM	119CFM	85CFM	44CFM	19CFM	0CFM
Model	0.00 SP	0.20 SP	0.40 SP	0.60 SP	0.80 SP	1.00 SP	1.20 SP	1.44 SP	1.64 SP	1.72 SP
OIF8-560	425CFM	383CFM	345CFM	303CFM	259CFM	220CFM	172CFM	110CFM	49CFM	100CFM
Model	0.00 SP	0.20 SP	0.40 SP	0.60 SP	0.80 SP	1.00 SP	1.30 SP	1.68 SP	1.92 SP	2.50 SP
OIF10-670	566CFM	513CFM	457CFM	396CFM	333CFM	274CFM	210CFM	139CFM	95CFM	0CFM
Model	0.00 SP	0.20 SP	0.40 SP	0.60 SP	0.80 SP	1.00 SP	1.45 SP	2.00 SP	2.40 SP	3.00 SP
OIF12-880	767CFM	682CFM	566CFM	413CFM	300CFM	238CFM	173CFM	92CFM	53CFM	0CFM

MAXIMIZE AIRFLOW, MINIMIZE ENERGY

The **ORTECH ODDMF Series** Inline Fans feature advanced mixed flow technology, offering a combination of inline fans and mixed flow silencers designed for optimal air movement. These fans utilize cutting-edge brushless EC motors equipped with Hall IC technology, ensuring reliable performance and precision control.

One of the standout features of the ODDMF Series is its remarkable energy efficiency. These fans operate at significantly lower power consumption levels compared to average fans, making them an environmentally friendly choice while reducing operational costs. The innovative design promotes quiet operation, enhancing comfort in both residential and commercial spaces.

Constructed with durable aluminum housing and a jet-engine design that incorporates double impellers, the ODDMF fans provide stable performance that is free from vibrations.



**ODDMF
SERIES**



MIXED FLOW
INLINE FAN

5YR WARRANTY



ODDMF-4-160

4" Compact Size Mixed Flow Inline Fan With Cutting Edge Brushless EC Motor

- Max. Speed: 5000 RPM
- Air Volume (CFM): 160
- Static Pressure: 1.34 in H₂O | 334 Pa
- Noise: 56.8 dBA
- Max. Power: 18W
- IP Rating: IP 64 (IP 68 available)
- Fan Weight: 2.4 lbs

- 4-poles brushless motor with hall IC
- Built with aluminum housing & jet-engine design double impellers
- Can work under much lower power consumption than average fans



MIXED FLOW
INLINE FAN

5YR WARRANTY



ODDMF-5-170

5" Compact Size Mixed Flow Inline Fan With Cutting Edge Brushless EC Motor

- Max. Speed: 5000 RPM
- Air Volume (CFM): 166
- Static Pressure: 1.46 in H₂O | 363 Pa
- Noise: 54.4 dBA
- Max. Power: 20W
- IP Rating: IP 64 (IP 68 available)
- Fan Weight: 2.4 lbs

- 4-poles brushless motor with hall IC
- Built with aluminum housing & jet-engine design double impellers
- Can work under much lower power consumption than average fans



MIXED FLOW
INLINE FAN

5YR WARRANTY

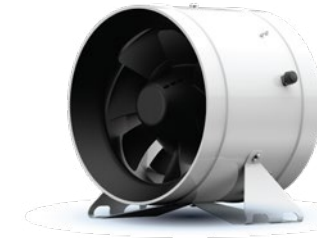


ODDMF-6-350

6" Compact Size Mixed Flow Inline Fan With Cutting Edge Brushless EC Motor

- Max. Speed: 5000 RPM
- Air Volume (CFM): 350
- Static Pressure: 2.01 in H₂O | 500 Pa
- Noise: 60 dBA
- Max. Power: 40W
- IP Rating: IP 64 (IP 68 available)
- Fan Weight: 3.5 lbs

- 6-poles brushless motor with hall IC
- Built with aluminum housing & jet-engine design double impellers
- Can work under much lower power consumption than average fans



MIXED FLOW
INLINE FAN

5YR WARRANTY



ODDMF-8-710

8" Compact Size Mixed Flow Inline Fan With Cutting Edge Brushless EC Motor

- Max. Speed: 3800 RPM
- Air Volume (CFM): 710
- Static Pressure: 2.09 in H₂O | 520 Pa
- Noise: 61.6 dBA
- Max. Power: 75W
- IP Rating: IP 64 (IP 68 available)
- Fan Weight: 5.5 lbs

- 6-poles brushless motor with hall IC
- Built with aluminum housing & jet-engine design double impellers
- Can work under much lower power consumption than average fans





MIXED FLOW
INLINE FAN

5YR WARRANTY

ODDMF-10-1070

10" Compact Size Mixed Flow Inline Fan With Cutting Edge Brushless EC Motor

- Max. Speed: 3200 RPM
- Air Volume (CFM): 1065
- Static Pressure: 2.05 in H₂O | 510 Pa
- Noise: 65 dBA
- Max. Power: 150W
- IP Rating: IP 64 (IP 68 available)
- Fan Weight: 6.6 lbs

- 6-poles brushless motor with hall IC
- Built with aluminum housing & jet-engine design double impellers
- Can work under much lower power consumption than average fans



MIXED FLOW
INLINE FAN

5YR WARRANTY

ODDMF-12-1760

12" Compact Size Mixed Flow Inline Fan With Cutting Edge Brushless EC Motor

- Max. Speed: 2800 RPM
- Air Volume (CFM): 1640
- Static Pressure: 2.40 in H₂O | 598 Pa
- Noise: 70 dBA
- Max. Power: 260W
- IP Rating: IP 64 (IP 68 available)
- Fan Weight: 18.7 lbs

- 6-poles brushless motor with hall IC
- Built with aluminum housing & jet-engine design double impellers
- Can work under much lower power consumption than average fans



MIXED FLOW
SILENCER

5YR WARRANTY

ODDMF-6-350-Q

Silenced Version Of ODDMF Inline Fans, Constructed With A 6" Inline Fan

- Max. Speed: 5000 RPM
- Air Volume (CFM): 350
- Static Pressure: 2.01 in H₂O | 500 Pa
- Noise: 50 dBA
- Max. Power: 40W
- IP Rating: IP 64 (IP 68 available)
- Fan Weight: 11 lbs

- 6-poles brushless motor with sine wave
- Stable and free from vibrations
- Built with cold-rolled steel housing and aluminum flange



MIXED FLOW
SILENCER

5YR WARRANTY

ODDMF-8-710-Q

Silenced Version Of ODDMF Inline Fans, Constructed With A 8" Inline Fan

- Max. Speed: 3800 RPM
- Air Volume (CFM): 710
- Static Pressure: 2.09 in H₂O | 500 Pa
- Noise: 51 dBA
- Max. Power: 75W
- IP Rating: IP 64 (IP 68 available)
- Fan Weight: 16.5 lbs

- 6-poles brushless motor with sine wave
- Stable and free from vibrations
- Built with cold-rolled steel housing and aluminum flange

ACCESSORIES (INCLUDED)



SPEED CONTROLLER
3.5MM CONNECTION
JACK



DIY 4-PINS
CONTROL



SLIM3-RINGVB
VINTAGE BRASS

ACCESSORIES (SOLD SEPARATELY)



WALL MOUNTED
CONTROLLER



ODDMF-ST
SMART
CONTROLLER
WITH PROBE



ADAPTER TO
OTHER 3 PIN
CONTROLLER



WIRELESS
REMOTE WITH
RECEIVER



ADAPTER TO
OTHER RJ45
CONTROLLERS



3.5MM TRRS
JACK EXTENSION
CONTROL CABLE

Model	0 SP	0.15 SP	0.37 SP	0.50 SP	0.63 SP	0.73 SP	0.80 SP	1.02 SP	1.33 SP
ODDMF-4-160	160CFM	141CFM	119CFM	100CFM	79CFM	56CFM	40CFM	21CFM	0CFM

Model	0 SP	0.24 SP	0.51 SP	0.83 SP	1.01 SP	1.08 SP	1.27 SP	1.59 SP	1.90 SP
ODDMF-6-160	350CFM	306CFM	260CFM	219CFM	172CFM	129CFM	87CFM	45CFM	0CFM

Model	0 SP	0.33 SP	0.66 SP	0.88 SP	1.08 SP	1.16 SP	1.39 SP	1.82 SP	2.05 SP
ODDMF-10-160	1065CFM	928CFM	790CFM	681CFM	533CFM	397CFM	266CFM	137CFM	137CFM

Model	0 SP	0.24 SP	0.43 SP	0.58 SP	0.62 SP	0.74 SP	0.95 SP	1.29 SP	1.46 SP
ODDMF-5-160	163CFM	143CFM	121CFM	98CFM	81CFM	60CFM	38CFM	18CFM	0CFM

Model	0 SP	0.55 SP	0.85 SP	1.06 SP	1.16 SP	1.26 SP	1.35 SP	1.74 SP	2.09 SP
ODDMF-8-160	710CFM	612CFM	533CFM	440CFM	353CFM	272CFM	175CFM	87CFM	0CFM

Model	0 SP	0.67 SP	1.02 SP	1.09 SP	1.31 SP	1.40 SP	1.92 SP	2.41 SP	
ODDMF-12-160	1639CFM	1405CFM	1266CFM	1224CFM	714CFM	527CFM	271CFM	0CFM	

ACCESSORIES (INCLUDED)



WALL MOUNTED
CONTROLLER



SPEED CONTROLLER
3.5MM CONNECTION
JACK



DIY 4-PINS
CONTROL



SLIM3-RINGVB
VINTAGE BRASS

ACCESSORIES (SOLD SEPARATELY)



ODDMF-ST
SMART
CONTROLLER
WITH PROBE



ADAPTER TO
OTHER 3 PIN
CONTROLLER



WIRELESS
REMOTE WITH
RECEIVER



ADAPTER TO
OTHER RJ45
CONTROLLERS

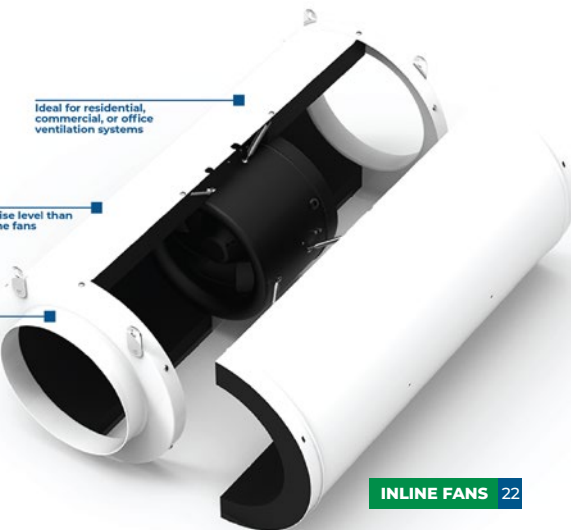


3.5MM TRRS
JACK EXTENSION
CONTROL CABLE

Ideal for residential, commercial, or office ventilation systems

Offers lower noise level than mixed flow inline fans

Stable and free from vibrations



ODDMF-12-1750-Q

Silenced Version Of ODDMF Inline Fans, Constructed With A 12" Inline Fan

- Max. Speed: 2800 RPM
- Air Volume (CFM): 1640
- Static Pressure: 2.40 in H₂O | 500 Pa
- Noise: 60 dBA
- Max. Power: 260W
- IP Rating: IP 64 (IP 68 available)
- Fan Weight: 46.3 lbs

- 6-poles brushless motor with sine wave
- Stable and free from vibrations
- Built with cold-rolled steel housing and aluminum flange

INFUSE NATURE INTO YOUR SPACE

ORTECH's Energy Recovery Ventilators (ERVs) are designed to enhance indoor air quality by exchanging stale indoor air with fresh outdoor air while recovering energy from the exhaust air. The ERVs capture both heat and moisture, making them ideal for balancing humidity levels and maintaining a comfortable, healthy living environment. This technology is especially beneficial in energy-efficient homes that are tightly sealed, where proper ventilation is crucial for preventing air quality issues.

A standout feature of ORTECH's ERVs is their energy-saving capability. By recovering up to 87% of the energy from the exhaust air, these ventilators reduce the heating and cooling load on HVAC systems, leading to lower energy consumption and cost savings. They work effectively in different climates, helping to control excess moisture in humid regions and preventing indoor air from becoming too dry in colder areas. The units are versatile and can be installed in residential or light commercial settings.



5YR WARRANTY



OD-ERV 150AC

Energy Recovery Ventilator With Efficient Cross-flow Core & Pressure Ports for air balancing

- Has 6" duct connections and 6 ft power cord
- MERV 6 filters standard with MERV 13 option for OA stream
- 30-100% speed control built-in for OA and RA air-streams for balancing and reducing airflow per requirement
- Efficient cross-flow core and pressure ports for airflow balancing
- Temperature sensor to limit operation during very low temperatures
- Run time per hour at low speed setting, 0-60 min per hour (ASHRAE 62.2)
- Auto-reset thermal overload protection on motors and no drain pan or hose required
- CSA standard C439-18 compliant

OPTIONAL

Manual override switch (MOS) can be used in conjunction with a powered wall mounted delay timer, using a plug-in relay (not included), to boost the unit into high-speed operation for specified time.

Airflow (CFM)	ESP (in w.g.)		Estimated HVI		Power		Speed
	FA	RA	SRE	ASRE	Watts	CFM/W	
125	0.40	0.43	46	52	125	1.00	High
22	0.40	0.40	68	80	38	0.58	Minimum
55	0.10	0.10	62	67	39	1.41	Low

Speed Setting	Airflow (CFM)	Sones
High	125	4.8
Low	55	2.1
Minimum	22	2.4



5YR WARRANTY

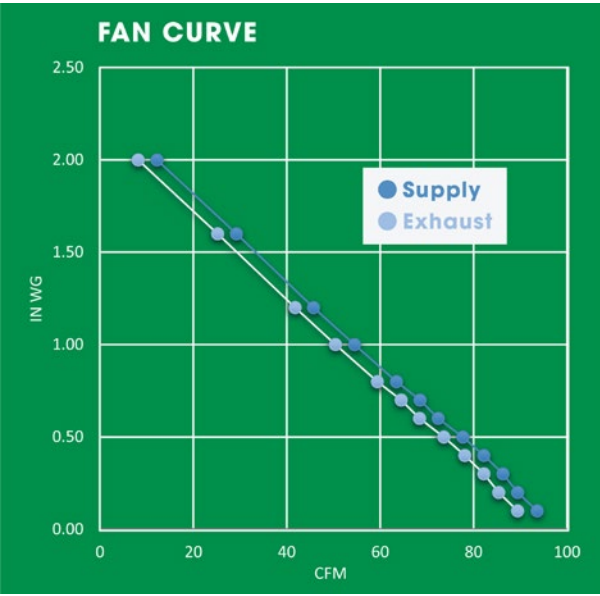


ODD-ERV-80 | ODD-ERV-80R

Energy Recovery Ventilator With Efficient Cross-flow Core

- Super Compact Size: 22 3/4 x 21 31/32 x 8 9/16 inches
- Mirrored: Mirrored unit available for identical but mirrored suites
- Brings a continuous supply of fresh air into the home while exhausting contaminated air
- Includes easy-mount bracket and easy access service door
- Insulation: Cabinet is fully insulated with high density expanded polystyrene
- Filter: Two (2) washable primary air filters
- Four (4) feet long 110V Electric Cord Standard
- CSA standard C439-18 compliant

- Efficiency (SRE): 76.9% @ 43.4CFM
- Airflow: 87CFM @ 0.25"wg
- Voltage: 120V / 1Ph / 60Hz
- Wattage: 57W
- Amp: 0.80A
- Fans: 2 EC centrifugal fans
- Duct Size: 5"
- Weight: 52 lbs



DEFROST FUNCTION

Integrated dampers allow seamless defrosting to prevent the energy recovery core from freezing in cold weather in order to maintain high energy efficiency. Normal operation switches to defrost mode automatically based on outdoor conditions. The default defrost mode is exhaust only.

ACCESSORIES (SOLD SEPARATELY)



Heating	Supply Temp.		Net Airflow	Average Power	Sensible Recovery Efficiency (SRE)	Adjusted Sensible Recovery Efficiency (ASRE)	Apparent Sensible Effectiveness	Net Moisture Transfer
I	0°C	32°F	43.4CFM	42W	76.9	83.7	86.0	0.67
II	0°C	32°F	54CFM	38W	74.7	79.7	81.6	0.62
III	0°C	32°F	64.4CFM	34W	72.5	76.1	78.1	0.57

Cooling	Supply Temp.		Net Airflow	Average Power	Sensible Recovery Efficiency (SRE)	Adjusted Sensible Recovery Efficiency (ASRE)	Apparent Sensible Effectiveness	Net Moisture Transfer
I	35°C	95°F	43.6CFM	40W	70.4	69.2	77.1	0.68



5YR WARRANTY

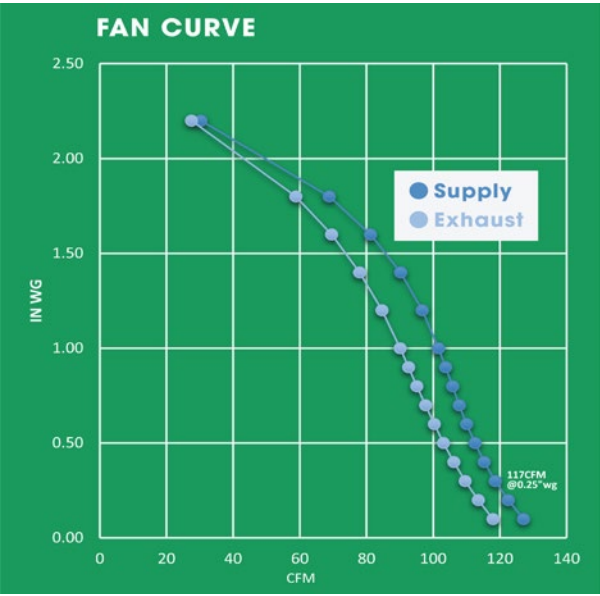


ODD-ERV-120 | ODD-ERV-120R

Energy Recovery Ventilator With Efficient Cross-flow Core

- Super Compact Size: 24 11/16 x 26 13/16 x 9 11/16 inches
- Mirrored: Mirrored unit available for identical but mirrored suites
- Brings a continuous supply of fresh air into the home while exhausting contaminated air
- Includes easy-mount bracket and easy access service door
- Insulation: Cabinet is fully insulated with high density expanded polystyrene
- Filter: Two (2) washable primary air filters
- Four (4) feet long 110V Electric Cord Standard
- CSA standard C439-18 compliant

- Efficiency (SRE): 76.7% @ 67.8CFM
- Airflow: 117CFM @ 0.25"wg
- Voltage: 120V / 1Ph / 60Hz
- Wattage: 96W
- Amp: 1.32A
- Fans: 2 EC centrifugal fans
- Duct Size: 5"
- Weight: 52 lbs



DEFROST FUNCTION

Integrated dampers allow seamless defrosting to prevent the energy recovery core from freezing in cold weather in order to maintain high energy efficiency. Normal operation switches to defrost mode automatically based on outdoor conditions. The default defrost mode is exhaust only.

ACCESSORIES (SOLD SEPARATELY)



Heating	Supply Temp.		Net Airflow	Average Power	Sensible Recovery Efficiency (SRE)	Adjusted Sensible Recovery Efficiency (ASRE)	Apparent Sensible Effectiveness	Net Moisture Transfer
I	0°C	32°F	67.8CFM	32W	76.7	80.1	82.2	0.63
II	0°C	32°F	97.2CFM	52W	70.6	74.3	76.7	0.55
III	0°C	32°F	107CFM	66W	69.3	73.4	75.4	0.53
IV*	0°C	32°F	53CFM	24W	80	84	86	-

Cooling	Supply Temp.		Net Airflow	Average Power	Sensible Recovery Efficiency (SRE)	Adjusted Sensible Recovery Efficiency (ASRE)	Apparent Sensible Effectiveness	Net Moisture Transfer
I	35°C	95°F	66.1CFM	32W	65.9	72.2	76.9	0.64



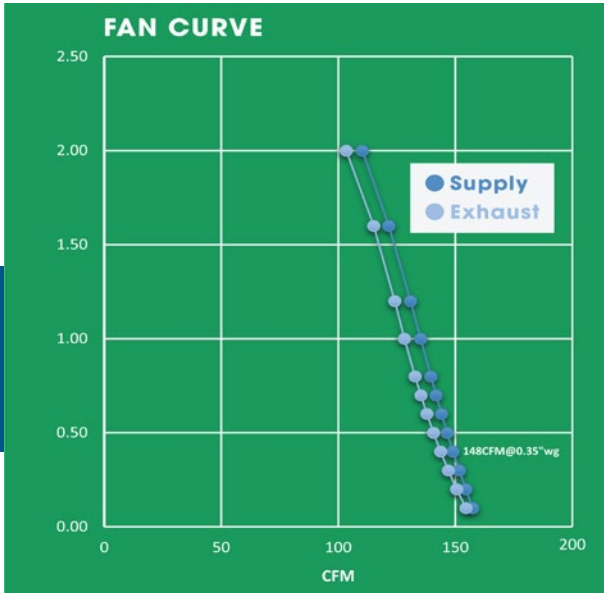
5YR WARRANTY



ODD-ERV-150 | ODD-ERV-150R

- Energy Recovery Ventilator With Efficient Cross-flow Core
- Super Compact Size: 24 11/16" x 26 13/16" x 9 11/16" inches
 - Mirrored: Mirrored unit available for identical but mirrored suites
 - Brings a continuous supply of fresh air into the home while exhausting contaminated air
 - Includes easy-mount bracket and easy access service door
 - Insulation: Cabinet is fully insulated with high density expanded polystyrene
 - Filter: Two (2) washable primary air filters
 - Four (4) feet long 110V Electric Cord Standard
 - CSA standard C439-18 compliant

- Efficiency (SRE): 71% @ 68.4CFM
- Airflow: 148CFM @ 0.35"wg
- Voltage: 120V / 1Ph / 60Hz
- Wattage: 165W
- Amp: 2.16A
- Fans: 2 EC centrifugal fans
- Duct Size: 5"
- Weight: 57 lbs



DEFROST FUNCTION

Integrated dampers allow seamless defrosting to prevent the energy recovery core from freezing in cold weather in order to maintain high energy efficiency. Normal operation switches to defrost mode automatically based on outdoor conditions. The default defrost mode is exhaust only.

ACCESSORIES (SOLD SEPARATELY)



TIMER



SCREEN CONTROLLER

Heating	Supply Temp.		Net Airflow	Average Power	Sensible Recovery Efficiency (SRE)	Adjusted Sensible Recovery Efficiency (ASRE)	Apparent Sensible Effectiveness	Net Moisture Transfer
I	0°C	32°F	68.4CFM	27W	71	74	76.6	0.60
II	0°C	32°F	100.8CFM	56W	66	70	72.4	0.55
III	0°C	32°F	148.7CFM	157W	61	68	70	0.49
IV*	0°C	32°F	55CFM	-	75	80	82	-
Cooling	Supply Temp.		Net Airflow	Average Power	Sensible Recovery Efficiency (SRE)	Adjusted Sensible Recovery Efficiency (ASRE)	Apparent Sensible Effectiveness	Net Moisture Transfer
I	35°C	95°F	67.8CFM	28W	62	64	71.4	0.62

* Data Based On Linear Interpolation



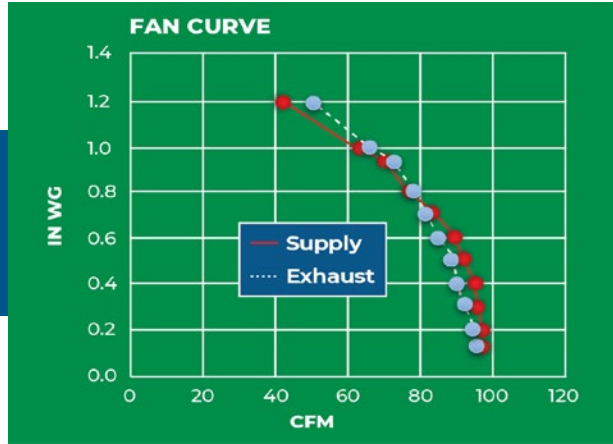
5YR WARRANTY



ODD-ERV100EC | ODD-ERV100ECR

- Energy Recovery Ventilator With Ultra Efficient Counter-flow Core
- Enhanced Indoor Air Quality: This air exchange system improves indoor air quality by retaining existing heat and optimizing interior moisture levels
 - Mirrored: Mirrored unit available for identical but mirrored suites
 - Adjustable Airflow: Supply and exhaust airflow can be manually adjusted within a range of 40 to 100 CFM
 - Filter: Two (2) washable primary air filters. MERV 8 & 13 optional
 - Built-in Humidity Control: Includes a humidity sensor to automatically maintain optimal indoor moisture levels for comfort
 - Super Compact Size: 22 1/8" x 35 9/16" x 9 inches
 - Certified Performance: Compliant with CSA Standard C439-18 for trusted energy recovery performance.

- Efficiency (SRE): 87% @ 48CFM
- Airflow: 98.8CFM @ 0.2"wg
- Voltage: 120V / 1Ph / 60Hz
- Wattage: 61.8W
- Amp: 0.52A
- Fans: EC motor
- Duct Size: 6"
- Weight: 42 lbs



DEFROST FUNCTION

Integrated dampers allow seamless defrosting to prevent the energy recovery core from freezing in cold weather in order to maintain high energy efficiency. Normal operation switches to defrost mode automatically based on outdoor conditions. The default defrost mode is recirculation.

ACCESSORIES (SOLD SEPARATELY)



TIMER



SCREEN CONTROLLER

Heating	Supply Temp.		Net Airflow	Sensible Recovery Efficiency (SRE)	Adjusted Sensible Recovery Efficiency (ASRE)	Apparent Sensible Effectiveness	Net Moisture Transfer
I	0°C	32°F	48.5CFM	87.4	90.3	92.4	0.88
II	0°C	32°F	60.8CFM	83.7	86.6	89.1	0.83
III	0°C	32°F	81.4CFM	79.2	82.7	83.9	0.78
IV	-25°C	-13°F	49.2CFM	63.6	65.8	86.3	0.61
Cooling	Supply Temp.		Net Airflow	Sensible Recovery Efficiency (SRE)	Adjusted Sensible Recovery Efficiency (ASRE)	Apparent Sensible Effectiveness	Net Moisture Transfer
I	35°C	95°F	47.7CFM	75.3	81.1	86.1	0.84

INVISIBLE OUTSIDE, INCREDIBLE INSIDE!

The innovative heat pump **SOLO** without an outdoor unit offers a game-changing solution for ultimate climate control. Designed with a compact and sleek profile, it eliminates the need for bulky external components, making it perfect for urban spaces, apartments, and homes with limited outdoor areas. This smart design not only enhances the aesthetic appeal of your home but also simplifies installation and maintenance, providing a hassle-free experience.

Despite its compact size, this heat pump packs a powerful punch when it comes to heating and cooling. Advanced technology ensures efficient performance, delivering cozy warmth in the winter and refreshing coolness in the summer—all while keeping energy consumption in check. With its whisper-quiet operation and precise temperature control, you can enjoy a comfortable indoor environment without disruptions.



INVERTED COMPRESSOR



SOLO (1 TON)

All-in-One Heat Pump Providing Compact Power For Ultimate Climate Control

- **Sleek, All-in-One Design:** Revolutionary heat pump system with no outdoor unit.
- **Energy Efficient & Quiet:** Advanced inverter compressor and variable-speed motor ensure high efficiency and whisper-quiet performance.
- **Effortless Installation & Operation.**
- **Venting Through Two Wall Ducts:** Efficiently expels and intakes air through just two small wall ducts, reducing structural impact.
- **Dual Functionality (Heating & Cooling):** Enjoy year-round comfort with seamless heating and cooling in a single, energy-efficient unit.
- **Drain pan heater:** Helps evaporate water in drain pan to reduce chance of freezing.

Specifications	SOLO (1 TON)
Efficiency	SEER2: 15.5 HSPF2: 8.29
Cooling Capacity	Rated: 12,030 Btu/h (Min-Max: 6,440-12,030 Btu/h)
Heating Capacity	Rated: 11,970 Btu/h+3000W(electric heat) (Min-Max: 4,370-11,970 Btu/h)
Electrical	Voltage: 208V-230V/50-60Hz/single phase Rated Current (cooling/heating): 6.1A/4.8A MCA: 23A MOCP: 30A
Input Power	Rated Cooling: 1209W Rated Heating: 947W
Sound	Indoor: 46 db(A) Outdoor: 50 db(A)
Refrigerant	R32/22.9oz
Fan Data	Indoor Airflow: 215-330 CFM Outdoor Airflow: 320-440 CFM
Power Supply	Power Cord or Hardwired
Compressor	Invertor Technology
Modes	Cooling, Heating, Dehumidity, Auto
Size (inches) WxHxD	39.4x22.8x8.6
Net Weight	117lb
Operating Range	Cooling: 23°F - 109°F Heating: 5°F - 75°F

FEATURES (INCLUDED)



INTEGRATED
TOUCH SCREEN



REMOTE CONTROL

ADD ON



THERMOSTAT
(PENDING)



SIDE WALL
ADAPTER KIT



DESIGN CONDITION PARAMETERS*

INDOOR TEMPERATURE	
Maximum Operating Temperature in Cooling Mode	DB 80°F/26.7°C WB 19.4°F/67°C
Minimum Operating Temperature in Cooling Mode	DB 67°F/19.4°C WB 57°F/13.9°C
Maximum Operating Temperature in Heating Mode	DB 80°F/26.7°C
Minimum Operating Temperature in Heating Mode	DB 70°F/21.1°C WB 60°F/15.6°C
OUTDOOR TEMPERATURE	
Maximum Operating Temperature in Cooling Mode	DB 115°F/46.1°C WB 75°F/23.9°C
Minimum Operating Temperature in Cooling Mode	DB 67°F/19.4°C WB 57°F/13.9°C
Maximum Operating Temperature in Heating Mode	DB 75°F/23.9°C WB 65°F/18.3°C
Minimum Operating Temperature in Heating Mode	DB 17°F/-8.3°C WB 15°F/-9.4°C

SIZZLE WITHOUT THE SMOKE

ORTECH's Kitchen Rangehoods are designed to combine powerful ventilation with sleek, modern design, keeping your kitchen smoke-free and stylish. With their high-performance motors, they quickly eliminate cooking odors, smoke, and grease, ensuring a fresh and comfortable cooking environment. The rangehoods come in a variety of designs and finishes, making them a perfect fit for any kitchen style.

In addition to performance, **ORTECH rangehoods** feature user-friendly controls and bright LED lighting to illuminate your cooking space. Their quiet yet efficient operation ensures that you can cook in peace without the disruptive noise of traditional ventilation systems, making them an essential kitchen appliance for both home chefs and casual cooks alike.

Whether it's a quick meal or a dinner party, **ORTECH Kitchen Rangehoods** ensure reliable, efficient ventilation to keep your kitchen clean and fresh.



1YR WARRANTY

COLOUR OPTIONS:
WHITE, BLACK,
STAINLESS STEEL



OD-19040

Powerful 190 High speed CFM 30" Under-Cabinet Kitchen Rangehood Fan

- Wattage: 90W
- Air Volume (CFM): 190 CFM(High Speed)
100 CFM(Low Speed)
- Voltage: 120V/60Hz
- Lighting: 2x40W Incandescent lights, A15 bulb (A19 max size)
- No. Of Motor And Speed: Single | 2 Speed

- Control: Push Button Switch
- Warranty: 1 year | No warranty on the lights

- For outdoor or indoor vented installations (Ducted or non-Ducted)



1YR WARRANTY

COLOUR OPTIONS:
GLOSS WHITE,
SATIN NICKEL



OD-6092

Powerful 390 CFM, 3 Speed Double Motor Rangehood Fan

- Wattage: 180W(Fan)
210W(Motor)
- Air Volume (CFM): 390 CFM
- Voltage: 120V/60Hz
- Material: Stainless Steel
- No. Of Motor And Speed: Double | 3 Speed

- Control: Push Button Built-in
- Warranty: 1 year | No warranty on the lights

- Wall or ceiling mount, with ducted ventilation (Duct size: 6")



1YR WARRANTY

COLOUR OPTIONS:
WHITE,
SATIN NICKEL



OD-RH320

Powerful 320 CFM, 3 Speed 30" Rangehood Fan

- Air Volume (CFM): 313.2 CFM(High Speed)
238 CFM(Mid Speed)
117.2 CFM(Low Speed)
- Sones: 7.6 (High) | 5.1 (Mid) | 2.1 (Low)

- Voltage: 120V/60Hz
- Lighting: 2x5W GU10
- Control: Push Button Built-in
- Warranty: 1 year | No warranty on the lights

- For outdoor or indoor vented installations (Ducted or non-Ducted)

- Includes 2 dishwasher-safe aluminum filters and 1 charcoal filter



1YR WARRANTY

COLOUR OPTIONS:
GLOSS WHITE,
SATIN NICKEL



OD-6091

Powerful 275 CFM, 3 Speed Single Motor Rangehood Fan

- Wattage: 90W(Fan)
180W(Motor)
- Air Volume (CFM): 275 CFM
- Voltage: 120V/60Hz
- Material: Stainless Steel
- No. Of Motor And Speed: Single | 3 Speed
- Control: Push Button Built-in
- Warranty: 1 year | No warranty on the lights

- Wall or ceiling mount, with ducted ventilation (Duct size: 6")



1YR WARRANTY

COLOUR OPTIONS:
STAINLESS STEEL



OD-IRH-500

Powerful 500 CFM, 30" Rangehood Fan Designed To Fit Standard Kitchen Cabinets

- Wattage: 306W (300W motor + 3W bulb)
- Air Volume (CFM): 500 CFM(High Speed)
400 CFM(Low Speed)
300 CFM(Low Speed)
- Voltage: 120V/60Hz
- Lighting: 2xGU10 LED Bulbs
- No. Of Motor And Speed: Single | 3 Speed

- Control: Push Button Built-in
- Warranty: 1 year | No warranty on the lights

- Stainless steel baffle filters to capture grease effectively



1YR WARRANTY

COLOUR OPTIONS:
SATIN NICKEL



OD-RH600

Powerful 600 CFM, 3 Speed 30" Under-Cabinet Rangehood Fan

- Air Volume (CFM): 300 CFM(High Speed)
450 CFM(Low Speed)
600 CFM(Low Speed)

- Voltage: 120V/60Hz
- Lighting: Energy-efficient LED
- No. Of Speed: 3 Speed
- Control: Touch control
- Warranty: 1 year | No warranty on the lights

- Includes baffle filters

- Vertical/Horizontal vent option rectangular
- 3-1/4"x10" | Vertical vent option 6" round

FEEL THE HEAT, NOT THE BILL

ORTECH Heaters are designed to provide powerful, efficient heating solutions for a wide range of spaces. Whether you need reliable warmth in residential, commercial, or industrial environments, **ORTECH heaters** deliver consistent heat output while maintaining energy efficiency. Their advanced technology ensures rapid heating, making them perfect for those cold winter months.

With various models, including infrared carbon heaters and electric options, **ORTECH heaters** are built to suit different needs and preferences. They come equipped with features like adjustable thermostats, overheat protection, and multiple safety measures, offering both convenience and peace of mind.

Easy to install and maintain, **ORTECH heaters** are crafted to withstand tough conditions while blending seamlessly into any space. Their sleek, modern designs make them a perfect addition to homes, offices, or workshops, ensuring you stay warm and comfortable year-round.



1YR WARRANTY



HS-CH 1500W

Commercial Grade Robut And Waterproof Infrared Carbon Heater With Remote Control

- Wattage: 1500W
- Voltage: 120V AC
- Amps: 13A
- Material: Aluminum, Plastic
- Phase: I
- Rating: Indoor and outdoor use
- Grade Of Protection: IP55
- Coverage Area: 172.2-257.6 ft²
- Control: Timer, Powersetting

■ For both ceiling and wall mounting, Produces instant and comfortable heat

APPLICATION

Robust and weatherproof heater designed for commercial and residential heating applications for indoor and outdoor places like: Restaurant / Garden / Stairways / Patios / Decks / Balcony areas / Walkways, etc



1YR WARRANTY



HS-CH 2500W

Commercial Grade Robut And Waterproof Infrared Carbon Heater With Remote Control

- Wattage: 2500W
- Voltage: 240V AC
- Amps: 10.5A
- Material: Aluminum, Plastic
- Phase: I
- Rating: Indoor and outdoor use
- Grade Of Protection: IP55
- Coverage Area: 183-279.9 ft²
- Control: ON/OFF switch

■ For both ceiling and wall mounting, Produces instant and comfortable heat

CONTROL THE AIR, MASTER THE COMFORT

With advanced sensors, speed controllers, and timers, these controls allow for seamless adjustments, ensuring that the temperature, airflow, and energy usage are optimized at all times. Whether it's for residential or commercial spaces, **ORTECH HVAC controls** help maintain a balanced indoor climate with minimal effort.

The inclusion of smart sensors enables real-time feedback, automatically adjusting system performance based on environmental conditions. Speed controllers offer flexible options for adjusting fan speeds, providing the ideal balance between airflow and energy consumption, while the timers ensure the system runs efficiently only when needed, avoiding unnecessary energy use.

Built for convenience and reliability, ORTECH HVAC controls provide a smarter way to manage your indoor comfort.



**AMP
SENSOR**



**MOTION
SENSOR**

AS-5 | AS-5 | AS-10 | AS-15

Amp Sensor With High Current AC Switch And Dryer Control

- Time Delay: None | 5 mins | 10 mins | 15 mins
- Output: TRIAC
- Switch V: 120V AC
- Switch I: 2.5 Amps
- Leakage: <1mA
- Input I Min: ~0.5 Amp
- Input I: 50 Amps

- Compatible with Dryer Booster Fans
- Designed to mount in a standard electrical box
- Only two wire connections needed for easy installation

DWOS

12 Amps Passive Infrared Sensor With Ambient Light Level Sensor

- Voltage: 120V/60Hz
- Resistive: 12A
- Time Delay: 15 sec ~ 30 min
- Light Level: 30 Lux - Daylight
- Motor: 1/4HP
- Operating Temp.: 0°C ~ +55°C

- Has one relay (equal to single pole switch)
- After no motion is detected for the set time delay, the load turns off automatically
- Detects difference between heat emitted from human body in motion & background space

**HUMIDITY
SENSOR**

WM-DWHS

Humidity And Fan Control Sensor For Reducing Bathroom Condensation

- Voltage: 120V/60Hz
- Max. Fan Load: 3A
- Max. Fan Time: 30 mins
- Delay:
- Humidity Range: 45% ~ 80% RH

- Saves energy
- Reduces bathroom condensation
- Combines humidity and bath fan control functions

WM-DHOS

Single Pole/PIR Motion Sensor With Interchangeable Face Cover

- Voltage: 120V/60Hz
- Time Delay: 15 sec & 5, 15, 30 mins
- Fan Load: 1/4HP (3A)
- Humidity Range: 45% - 80% RH

- Easily replaces existing standard switch
- Neutral wire required
- Compatible with incandescent, fluorescent, halogen, and LED Lighting

SDS-10

Air Pressure Sensing Switch With Electric Cycle Timing Board

- SPDT/SPS Electric Load: 1/10 HP at 120-277V AC
- 28VA Pilot Duty: at 24V AC
- 125VA Pilot Duty: at 120V AC

COMPATIBLE FANS



- Switch enclosure with removable cover will accept 3-1/2" conduit connections

**AIR PRESSURE SENSING
SWITCH**



SPEED
CONTROLLER

ODC-SCK

Speed Controller For Next Generation Compact Series Fans

COMPATIBLE FANS



ODC SERIES

- Accessible speed adjustment
- The sensor mounts into the fan with two pre-drilled holes in a standard receptacle
- Allows for continuous adjustable speed control as per Ashrae 62.2, with high speed override



SPEED
CONTROLLER

ODD-SCK-500

Speed Controller For ODD-400 And ODD-500 Fans

COMPATIBLE FANS



ODD-400 | ODD-500

- Accessible speed adjustment
- Simple plug fits into fan housing and Can be installed with a new existing fan
- Allows for continuous adjustable speed control as per ASHRAE 62.2, with high speed override



IN-WALL
TIMER



HET01-R

15A Programmable 7 Day Digital Timer With Daylight Saving Feature

- Voltage: 120V/60Hz
- Tungsten Rating: 1200W
- Resistive Rating: 15A
- Motor Load: 1/4HP
- Operating Temp.: 0°C ~ +55°C
- Large digital LCD display
- Both automatic / manual operation possible
- Built-in memory holds settings indefinitely without power



IN-WALL
TIMER



HET06-R

Commercial grade Preset In-wall Countdown Single Pole Timer

- Voltage: 125V/60Hz
- Tungsten Rating: 1000W
- Resistive Rating: 15A
- Motor Load: 1/2HP
- Operating Temp.: 0°C ~ +55°C
- Humidity: 95% RH, non-condensing
- Large digital LCD display
- Both automatic / manual operation possible
- Built-in memory holds settings indefinitely without power



SPEED
CONTROLLER

ODM-SCK

Speed controller For Next Generation Micro Compact Series Fans

COMPATIBLE FANS



ODE SERIES

- Accessible speed adjustment
- Simple plug fits into fan housing and Can be installed with a new existing fan
- Allows for continuous adjustable speed control as per Ashrae 62.2, with high speed override



SMART SPEED
CONTROLLER

ODDMF-ST

6 Speed Smart Controller With Thermal Probe

COMPATIBLE FANS



ODDMF SERIES

- Monitor environmental temperature
- Accurate ventilation and energy saving with mode selection of Manual, Auto and Alert
- Supporting control of up to 4 EC fans simultaneously

OD-SCV-10A

Fully Variable 10 Amps Rotary Pole Speed Control For ORTECH AC And DC Motor Fans

- Voltage: 120V/60Hz
- Amps: 10A
- Type: Fully Variable
- Pole: Single

- Has single pole
- The colour of the knob is ORTECH white
- The principle of the knob is from low to high with mark and also mark OFF in the wallplate



ROTARY POLE
SPEED CONTROLLER

OD-SCV-5A

Fully Variable 5 Amps Rotary Pole Speed Control For ORTECH AC And DC Motor Fans

- Voltage: 120V/60Hz
- Amps: 5A
- Type: Fully Variable
- Pole: Single

- Has single pole with 771I stainless steel
- The colour of the knob is ORTECH white
- The principle of the knob is from low to high with mark and also mark OFF in the wallplate



ROTARY POLE
SPEED CONTROLLER





FIRE
DAMPER



FIRE DAMPER-ODC

Fire Damper For The Next Generation
Compact Series Fans Only

COMPATIBLE FANS



ODC SERIES

- Fire Resistant: Up to 3 hours
- Ceiling radiation damper with 3 hour rating and includes fiberglass cover and ceramic fiber
- Comes with roll-framed frame made of galvanized steel



FIRE
DAMPER



FIRE DAMPER-ODE

Fire Damper For The Next Generation
Universal Series Fans Only

COMPATIBLE FANS



ODE SERIES

- Fire Resistant: Up to 3 hours
- 165°F fusible link and Meets or exceeds NFPA-90A
- Separate outer frame allows complete fan and damper serviceability

AIR VALVES



PAV-B

Polymeric Air Valve For Air
Supply And Exhaust

- To be mounted into round duct by mounting frame
- Polypropylene body with adjustable core and thread
- Available in 4", 5", 6", 8" sizes



SAV

Steel Supply Air Valve With
Adjustable Core

- 50mm mounting frame
- Supplied with galvanized steel mounting framed
- Available in 4", 5", 6", 8" sizes

DAMPER



BDA

Back Draft Damper For Airflow
Control In Ventilation Systems

- For mounting between ducts
- Available in 4", 5", 6", 8", 10", 12" sizes
- Can function in both horizontal and vertical positions

DRYER BOXES



ODB-100

Residential Grade Wall
Recessed Metal Dryer Box

- With a round hose hole
- Places dryer flush to wall without crushing exhaust hose or restricting airflow
- Fits 2x6 stud size



ODB4-100

Residential Grade Wall
Recessed Metal Dryer Box

- With an oval hose hole
- Places dryer flush to wall without crushing exhaust hose or restricting airflow
- Fits 2x4 stud size

VAPOUR BARRIER



VB-6-S

Commercial/Residential Grade
Vapour Barrier For Fans

- Helps control moisture
- Applicable for most building codes
- Made of heavy duty polyethylene

DUCTWORK



ADA 4 to 6

Universal Series Adapter From
4" Duct to 6"

- Fits all round duct designs

ADA 6 to 4 (P)

Polymeric Adapter From 6"
Duct To 4" For Ventilation Fans

- Polymeric adapter



ACCESS
DOOR

CAD

Access Door To Inspect And Maintain
Circular And Spiral Ventilation Ducts

- Inexpensive curved access door
- Polyamid knobs ensure a quick re-installation of the door without the need for any tools
- Shape allows the back plate to be passed through the duct openings, and the neoprene gasket on the back plate
- Grants easy access into sheet metal ductwork systems for resetting dampers, cleaning filters, or regular maintenance



ACCESS
DOOR

IAD SERIES

Indoor Access Door For Typical Ductwork.
Safety Chain & Neoprene Gasket Included

- Available in 8"x5", 12"x6", 18"x10", 21"x14" sizes
- Comes with retaining chain between door & frame
- Offers convenient quick access to volume control dampers, coils, filters & equipment



FIRE
DAMPER



FIRE DAMPER-PB

Fire damper For All ORTECH Universal And
Premium Series PB Fans

COMPATIBLE FANS



ODD SERIES & OD-PB SERIES

- Fire Resistant: Up to 3 hours
- Ceiling radiation damper with 3 hour rating and includes fiberglass cover and ceramic fiber
- Comes with roll-framed frame made of galvanized steel



LINT TRAP
TO CATCH LINT

LINT TRAP-DS 6

6" Dual Size Lint Trap Suitable For 4" And 5"
Diameter Duct

- Easy to clean
- Magnetic door
- Glossy white face + no painted body
- Stainless steel mesh filter screen for long life
- Powder coated finish for increased durability
- 115.63 sq. inch filtering area, increasing dryer efficiency



LINT TRAP
TO CATCH LINT

LINT TRAP-DS-SL

Dual Size Lint Trap Suitable For 4" And 5"
Diameter Duct

- Easy to clean
- Length of the lint trap is 63.5cm (635mm)
- Glossy white face + no painted body
- Stainless steel mesh filter screen for long life
- Powder coated finish for increased durability
- 115.63 sq. inch filtering area, increasing dryer efficiency



FLUSH ACCESS
PANEL

FAP-18x18 | FAP-24x24 | FAP-30x24 | FAP-30x30 | FAP-38x26

Flush Access Panel With Welded Frame
And Strong Durable Bended Door Lid

- Screwdriver operated cam latch
- Good value for all plumbing, electrical, mechanical applications
- Easy installation — no further painting required
- With its concealed hinge, the door leaf can be opened from either left or right
- With its concealed hinge, the door leaf can be opened from either left or right



MUD ACCESS
PANEL

MAP-18x18 MAP-24x24 MAP-30x30

Mud Access Panel That Comes With Wet
Wall Set Bead Edge

- Screwdriver operated cam latch
- Good value for all plumbing, electrical, mechanical applications
- Easy to install adjustable fixing flat
- The door leaf can be left or right opened; fully concealed door hinge
- Paintable gray powder coated finish provides high durability and corrosion protection

VENT SMARTER, LIVE HEALTHIER!



TIPS FOR HAVING PROPER HVAC VENTILATION

- 1. Regular Filter Changes:** Replace HVAC filters every 1-3 months to maintain optimal airflow and improve indoor air quality.
- 2. Clean Air Ducts:** Schedule professional air duct cleaning every 3-5 years to remove dust, allergens, and debris that can obstruct airflow and reduce system efficiency.
- 3. Check Vent Locations:** Ensure vents are not blocked by furniture or curtains to allow for proper air circulation throughout your home.
- 4. Use Exhaust Fans:** Utilize exhaust fans in kitchens and bathrooms to remove excess moisture and pollutants, reducing the strain on your HVAC system.
- 5. Seal Duct Leaks:** Inspect and seal any leaks in your ductwork to prevent air loss and improve the efficiency of your HVAC system.

JOIN OUR COMMUNITY!

Visit our YouTube channel, subscribe, and be the first to see our latest tips and insights



ENGAGE WITH US ON YOUR FAVORITE SOCIAL NETWORKS

INSTAGRAM
@ ortechnidustries



FACEBOOK
@ ortechnidustries



LINKEDIN
@ ortechnidustries



OUR COMMITMENT

To be the trusted leader in delivering innovative and certified lighting, electrical, and HVAC solutions across diverse markets.

THE MORE YOU SHOP, THE MORE YOU SAVE!
LOYAL CUSTOMERS ENJOY GROWING DISCOUNTS.

CONTACT OUR TEAM FOR MORE INFO AT: [INFO@ORTECHINDUSTRIES.COM](mailto:info@ortechindustries.com)

THOUGHTS & TAKEAWAYS

Use this space to capture your thoughts, ideas, or reminders as you explore our catalogue.
Note down anything that inspires or stands out to you along the way!

CONTACT OUR TEAM FOR MORE INFO AT: INFO@ORTECHINDUSTRIES.COM

THOUGHTS & TAKEAWAYS

Use this space to capture your thoughts, ideas, or reminders as you explore our catalogue.
Note down anything that inspires or stands out to you along the way!

CONTACT OUR TEAM FOR MORE INFO AT: INFO@ORTECHINDUSTRIES.COM

THOUGHTS & TAKEAWAYS

Use this space to capture your thoughts, ideas, or reminders as you explore our catalogue.
Note down anything that inspires or stands out to you along the way!

CONTACT OUR TEAM FOR MORE INFO AT: [INFO@ORTECHINDUSTRIES.COM](mailto:info@ortechindustries.com)

THOUGHTS & TAKEAWAYS

Use this space to capture your thoughts, ideas, or reminders as you explore our catalogue.
Note down anything that inspires or stands out to you along the way!

CONTACT OUR TEAM FOR MORE INFO AT: [INFO@ORTECHINDUSTRIES.COM](mailto:info@ortechindustries.com)

BRITISH COLUMBIA

13376 Comber Way, Surrey, BC
V3W 5V9

ONTARIO

205 Summerlea Rd, Brampton, ON
L6T 4E5

GET IN TOUCH

info@ortechindustries.com



LED LIGHTING | HVAC SOLUTIONS | ELECTRICAL SUPPLIES

[ORTECHINDUSTRIES.CA](http://ORTTECHINDUSTRIES.CA)