

ELECTRICAL SHOWCASE

2025



YOUR SATISFACTION, OUR PRIORITY

At **ORTECH**, we are unwavering in our commitment to delivering superior LED lighting products, HVAC solutions, and electrical supplies. Our pledge is to ensure every offering excels in performance, reliability, and energy efficiency.

Rely on **ORTECH** for cutting-edge, premium solutions that elevate your environment and consistently surpass your expectations.

Since our inception in 2004, we have been dedicated to providing the most reliable construction materials, including lighting, electrical, and ventilation products.

As a national supplier, **ORTECH** products are now trusted in over 2 million homes across Canada and the USA.



BOXES

METAL BOXES	3
NON-METALLIC BOXES	6

DRIVERS

12 VOLT LED DRIVERS	10
24 VOLT LED DRIVERS	12

PLATES

METAL BOX COVER PLATES	13
MOUNTING PLATES	16

RECESSED LIGHTING

3 INCH	22
4 INCH	22
MULTIPLE	24

WIRING DEVICES

RECEPTACLES	25
SWITCHES, SENSORS, DIMMERS, TIMERS	27

CHIME KITS

DOOR CHIME KIT	29
----------------	----

MISCELLANEOUS

CONNECTORS, LAMP HOLDERS, VAPOUR BARRIERS, PLATES, CORDS, NMD90 STAPLES	30
---	----

EV SERIES

EV RECEPTACLE	33
---------------	----

AC DISCONNECT

AC-DC-60AMP	34
-------------	----

YOUR WIRES DESERVE A FORTRESS

ORTECH's Electric Metal Boxes are engineered for durability and safety, offering robust protection for electrical connections in residential, commercial, and industrial applications. Crafted from high-quality steel, these boxes provide a reliable solution for securing electrical wiring, switches, and outlets, ensuring compliance with strict building codes and standards.

Designed to handle demanding environments, **ORTECH metal boxes** feature rust-resistant coatings and sturdy construction that safeguard against impact, corrosion, and electrical fires. Their versatile design allows for easy installation in walls, ceilings, and floors, offering flexible configurations for different electrical needs.

Whether you're wiring a new build or updating an existing space, **ORTECH's metal boxes** deliver exceptional performance.

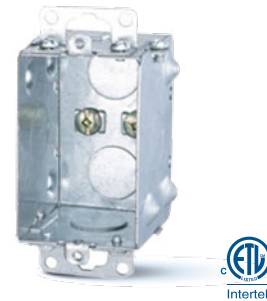


BOX 1004-LH

Single Gangable Device Box

- Application: **New Work**
- Material: **Galvanized Steel**
- Construction Type: **Assemble**
- Cover Included: **None**
- Knockout Options: **None**
- Size: **3"x2"x3"**

■ Offers flexible wiring solutions with easy customization for any electrical setup



BOX 1104-K

Steel Single Gangable Device Box

- Application: **New Work**
- Material: **Galvanized Steel**
- Construction Type: **Assemble**
- Cover Included: **None**
- Knockout Options: **None**
- Size: **3"x2"x2-1/2"**

■ Concentric knock outs & recessed ears



BOX 1104-L

Single Gangable Device Box With Flush Ear

- Application: **New Work**
- Material: **Galvanized Steel**
- Construction Type: **Assemble**
- Cover Included: **None**
- Knockout Options: **None**
- Size: **3"x2"x2-1/2"**

■ Offers flexible wiring solutions with easy customization for any electrical setup



BOX 1104-LA

Single Gangable Device Box With Flush Ears

- Application: **New Work**
- Material: **Galvanized Steel**
- Construction Type: **Assemble**
- Cover Included: **None**
- Knockout Options: **None**
- Size: **3"x2"x2-1/2"**

■ For armoured cable



BOX 1104-LH

Gangable Device Box With Cable Clamps

- Application: **New Work**
- Material: **Galvanized Steel**
- Construction Type: **Assemble**
- Cover Included: **None**
- Knockout Options: **None**
- Size: **3"x2"x2-1/2"**

■ Offers flexible wiring solutions with easy customization for any electrical setup



BOX 1104-LHA

Single Gangable Device Box With Two Embossed Mounting Slots

- Application: **New Work**
- Material: **Galvanized Steel**
- Construction Type: **Assemble**
- Cover Included: **None**
- Knockout Options: **None**
- Size: **3"x2"x2-1/2"**

■ Two embossed mounting slots for internal screw installation, For armoured cable



BOX 1110 (formerly A-1B)

Single Gang Steel Utility Box With Knockouts For Surface Mounting

- Application: **New Work**
- Material: **Galvanized Steel**
- Construction Type: **Drawn**
- Cover Included: **None**
- Knockout Options: **Side: 8-1/2"**
Bottom: 2-1/2"
4"x2-1/2"x1-7/8"
- Size: **4"x2-1/2"x1-7/8"**

■ Concentric knock outs & recessed ears

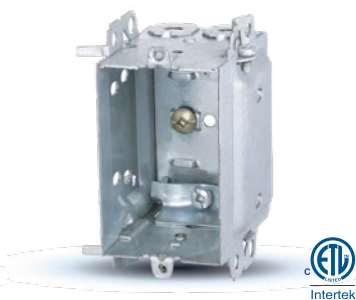


BOX 1110-R

One Gang Rectangular Device Cover With Extension Ring

- Application: **New Work**
- Material: **Galvanized Steel**
- Construction Type: **Drawn**
- Cover Included: **None**
- Knockout Options: **Side: 8-1/2"**
- Size: **4"x2-1/2"x1-7/8"**

■ Provides extra space for wiring while ensuring secure and protected device installations



BOX 1304-LH

Metal Device Box With Positioning Tabs

- Application: **New Work**
- Material: **Galvanized Steel**
- Construction Type: **Assemble**
- Cover Included: **None**
- Knockout Options: **None**
- Size: **3"x2"x2-1/2"**

■ Provision for external nailing, Positioning tabs for 1/2" and 3/4" drywall

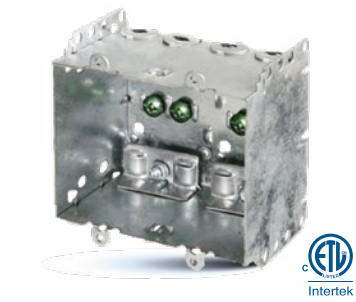


BOX 2104-LLE (formerly A-2D)

Single Gang Device Box With Clamps

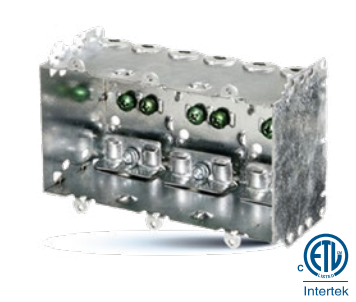
- Application: **New Work**
- Material: **Galvanized Steel**
- Construction Type: **Riveting**
- Cover Included: **None**
- Knockout Options: **None**
- Size: **3"x2"x2-1/2"**

■ Holds prongs prepositioned depth tabs



BOX 2104-LLE2 (formerly A-2D-1)

- Two Gang Device Box With Clamps
- Application: **New Work**
 - Material: **Galvanized Steel**
 - Construction Type: **Riveting**
 - Cover Included: **None**
 - Knockout Options: **None**
 - Size: **3"x3-3/4"x2-1/2"**
- Holds prongs prepositioned depth tabs



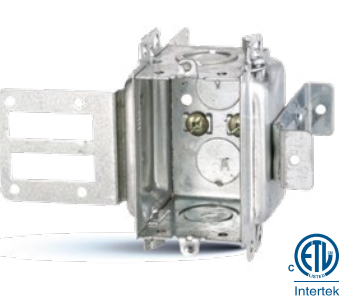
BOX 2104-LLE3 (formerly A-2D-2)

- Three Gang Device Box With Clamps
- Application: **New Work**
 - Material: **Galvanized Steel**
 - Construction Type: **Riveting**
 - Cover Included: **None**
 - Knockout Options: **None**
 - Size: **3"x5-1/2"x2-1/2"**
- Holds prongs prepositioned depth tabs



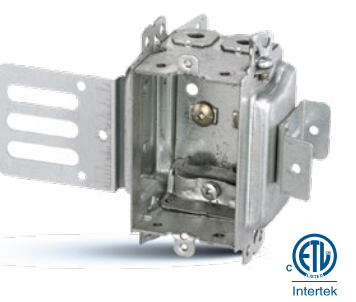
BOX 2104-LLE4 (formerly A-2D-3)

- Four Gang Device Box With Clamps
- Application: **New Work**
 - Material: **Galvanized Steel**
 - Construction Type: **Riveting**
 - Cover Included: **None**
 - Knockout Options: **None**
 - Size: **3"x7-3/8"x2-1/2"**
- Holds prongs prepositioned depth tabs



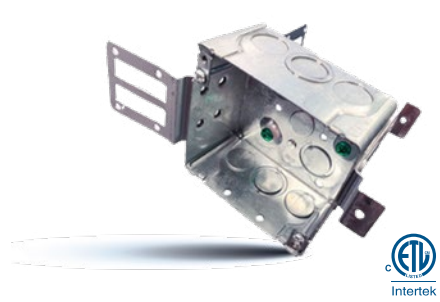
BOX 3102-KSSX

- Gangable Device Single Box With Concentric Knockouts & Wraparound bracket
- Application: **New Work**
 - Material: **Galvanized Steel**
 - Construction Type: **Assemble**
 - Cover Included: **None**
 - Knockout Options: **End 2**
 - Size: **3"x4-3/8"x2"**
- With wraparound bracket 12CU.IN., Can be used to support a device into the wall



BOX 3102-LSSAX

- Gangable Device Single Box With Wrap-Around Bracket For Steel Studs
- Application: **New Work**
 - Material: **Galvanized Steel**
 - Construction Type: **Assemble**
 - Cover Included: **None**
 - Knockout Options: **None**
 - Size: **3-7/8"x4-3/8"x2"**
- With wraparound bracket for 1-5/8" steel studs with integral support bracket



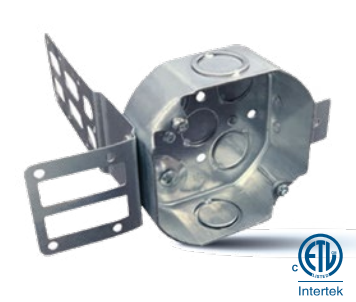
BOX 52171-KSSX

- Square Steel Junction Box With Wrap-Around Bracket
- Application: **New Work**
 - Material: **Galvanized Steel**
 - Construction Type: **Assemble**
 - Cover Included: **None**
 - Knockout Options: **Side: 7-1/2"x3-3/4"**
Bottom: 4-1/2"x2-3/4"
4"x4"x2-1/8"
 - Size: **For 2-1/2" and 3-5/8" steel studs with integral support bracket**



BOX 54151-K (formerly A-5B-2)

- 4" Octagonal Box With Concentric Knockouts
- Application: **New Work**
 - Material: **Galvanized Steel**
 - Construction Type: **Drawn**
 - Cover Included: **None**
 - Knockout Options: **Side: 4-1/2"x2-3/4"**
Bottom: 4-1/2"x2-3/4"
4"x4"x1-1/2"
 - Size: **Offers versatile wiring access, perfect for junctions and fixture installations**



BOX 54151-KSSX

- 4" Octagonal Box With Integral Support & Wrap-Around Bracket
- Application: **New Work**
 - Material: **Galvanized Steel**
 - Construction Type: **Drawn**
 - Cover Included: **None**
 - Knockout Options: **Side: 2-1/2"x2-3/4"**
Bottom: 4-1/2"x2-3/4"
4"x4"x1-1/2"
 - Size: **Wraparound bracket for 2-1/2" and 3-5/8" steel studs**



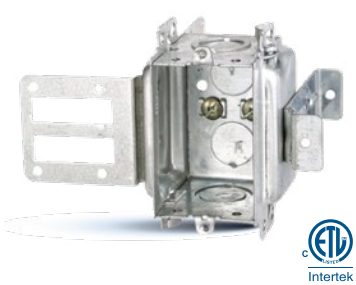
BOX 54151-L (formerly A-5B)

- 4" Octagon Box With Prepositioned Depth Tabs
- Application: **New Work**
 - Material: **Galvanized Steel**
 - Construction Type: **Drawn**
 - Cover Included: **None**
 - Knockout Options: **Side: 2-1/2"**
Bottom: 1-1/2"
4"x4"x1-1/2"
 - Size: **Ensures precise and hassle-free alignment for quick, secure installations.**



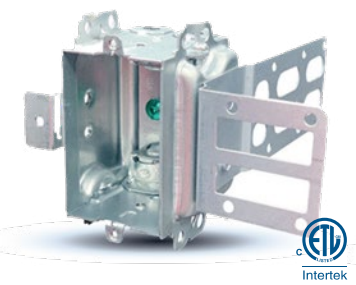
BOX 54151-LB (formerly A-5B-1)

- 4" Octagonal Metal Box With Side Bracket
- Application: **New Work**
 - Material: **Galvanized Steel**
 - Construction Type: **Drawn**
 - Cover Included: **None**
 - Knockout Options: **Side: 1-1/2"**
Bottom: 1-1/2"
4"x4"x1-1/2"
 - Size: **Offers flexible wiring solutions with easy customization for any electrical setup**



BOX 3104-KSSX

- Gangable Electrical Device Box For Supporting A Device Into The Wall
- Application: **New Work**
 - Material: **Galvanized Steel**
 - Construction Type: **Assemble**
 - Cover Included: **None**
 - Knockout Options: **4 pry outs**
 - Size: **3-7/8"x6-3/16"x1-13/16"**
- Wraparound Bracket for 2-1/2" and 3-5/8" steel studs, With AC90 / NMD cable clamps



BOX 3104-LSSAX

- Single Gangable Device Box With Wrap-Around Bracket
- Application: **New Work**
 - Material: **Galvanized Steel**
 - Construction Type: **Drawn**
 - Cover Included: **None**
 - Knockout Options: **Side: 8-1/2"**
Bottom: 2-1/2"
3"x2"x2-1/2"
 - Size: **2-1/2" and 5/8" steel studs with integral support bracket, For armoured cable**



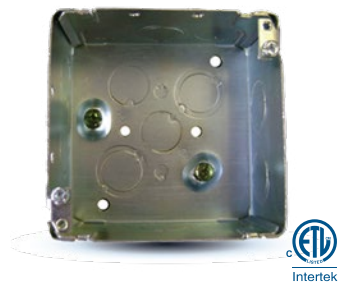
BOX 52151-K (formerly A-2A)

- 4" Square Steel Conduit Box With Concentric Knockouts
- Application: **New Work**
 - Material: **Galvanized Steel**
 - Construction Type: **Assemble**
 - Cover Included: **None**
 - Knockout Options: **Side: 10-1/2"x6-3/4"**
Bottom: 4-1/2"x2-3/4"
4"x4"x1-1/2"
 - Size: **Has concentric knockouts with raised earth grounding**



BOX 52151-KSSX

- Square Steel Junction Box With Wrap-Around Bracket
- Application: **New Work**
 - Material: **Galvanized Steel**
 - Construction Type: **Assemble**
 - Cover Included: **None**
 - Knockout Options: **Side: 7-1/2"x3-3/4"**
Bottom: 4-1/2"x2-3/4"
4"x4"x1-1/2"
 - Size: **For 2-1/2" and 3-5/8" steel studs with integral support bracket**



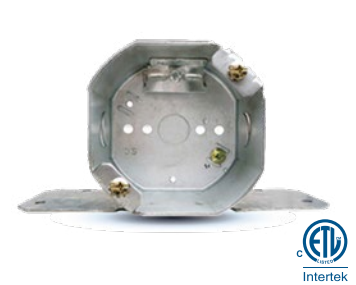
BOX 52171-K (formerly A-28)

- 4" Square Steel Conduit Box With Concentric Knockouts
- Application: **New Work**
 - Material: **Galvanized Steel**
 - Construction Type: **Riveting**
 - Cover Included: **None**
 - Knockout Options: **Side: 10-1/2"x6-3/4"**
Bottom: 4-1/2"x2-3/4"
4"x4"x2-1/8"
 - Size: **Concentric knockouts with raised earth grounding**



BOX 54151-LSSAX

- Steel Octagonal Metal Box With Side Bracket And Clamps
- Application: **New Work**
 - Material: **Galvanized Steel**
 - Construction Type: **Drawn**
 - Cover Included: **None**
 - Knockout Options: **Bottom: 1-1/2"**
4"x4"x1-1/2"
 - Size: **Holds prongs and prepositioned depth tabs, For armoured cable**



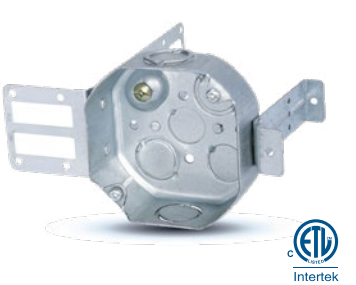
BOX 54171-FB

- 4" Octagon Ceiling Fan Support Box
- Application: **New Work**
 - Material: **Galvanized Steel**
 - Construction Type: **Drawn**
 - Cover Included: **None**
 - Knockout Options: **Side: 2-1/2"**
Bottom: 1-1/2"
4"x4"x2-1/8"
 - Size: **Max weight 70 lbs for fans, 200 lbs for chandeliers**



BOX 54171-K

- Steel Octagonal Junction Box With Clamps And Raised Earth Grounding
- Application: **New Work**
 - Material: **Galvanized Steel**
 - Construction Type: **Drawn**
 - Cover Included: **None**
 - Knockout Options: **Side: 4-1/2"x2-3/4"**
Bottom: 4-1/2"x2-3/4"
4"x4"x2-1/8"
 - Size: **With concentric knockouts & raised earth grounding**



BOX 54171-KSSX

- Octagonal Steel Stud Box With Wrap-Around Bracket And Clamps
- Application: **New Work**
 - Material: **Galvanized Steel**
 - Construction Type: **Drawn**
 - Cover Included: **None**
 - Knockout Options: **Side: 2-1/2"x2-3/4"**
Bottom: 4-1/2"x2-3/4"
4"x4"x2-1/8"
 - Size: **For 2-1/2" and 3-5/8" steel studs with integral support**



BOX 55171K

- 4" Octagonal Box Extension Ring
- Application: **New Work**
 - Material: **Galvanized Steel**
 - Construction Type: **Drawn**
 - Cover Included: **None**
 - Knockout Options: **Side: 4-1/2"x2-3/4"**
Bottom: 0
4"x4"x2-1/8"
 - Size: **Adds extra depth for accommodating more wiring and connections in tight spaces**

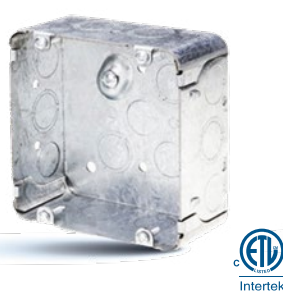


BOX 56111 (formerly A-5)

Round Shallow Ceiling Pan Box

- Application: **New Work**
- Material: **Galvanized Steel**
- Construction Type: **Drawn**
- Cover Included: **None**
- Knockout Options: **Bottom: 4-1/2" 4"x1-2"**
- Size: **4"x1-2"**

- Perfect for securely mounting light fixtures in shallow ceiling spaces

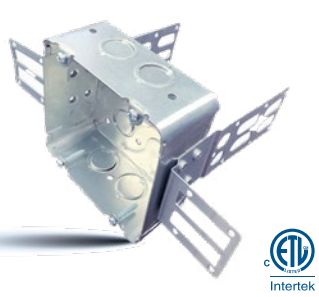


BOX 72171-K (formerly A-2C)

4-11/16" Square Junction Box With Concentric Knockouts

- Application: **New Work**
- Material: **Galvanized Steel**
- Construction Type: **Assemble**
- Cover Included: **None**
- Knockout Options: **Side: 10-1/2"x6-3/4" Bottom: 4-1/2"x2-3/4" 4-11/16"x4-11/16"x2-1/8"**
- Size: **4-11/16"x4-11/16"x2-1/8"**

- Concentric knockouts with raised earth grounding

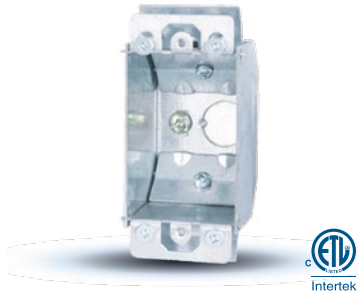


BOX 72171-KSSX

4-11/16" Square Stove Box With Wrap-Around Brackets

- Application: **New Work**
- Material: **Galvanized Steel**
- Construction Type: **Assemble**
- Cover Included: **None**
- Knockout Options: **Side: 4-1/2"x4-3/4" Bottom: 4-1/2"x2-3/4" 4-11/16"x4-11/16"x2-1/8"**
- Size: **4-11/16"x4-11/16"x2-1/8"**

- Wraparound for 2-1/2" and 3-5/8" steel studs



BOX 777LRB

Outlet Easy Box With Pivoting Ends For Rework Installation

- Application: **Rework Installation**
- Material: **Galvanized Steel**
- Construction Type: **Assemble**
- Cover Included: **None**
- Knockout Options: **Bottom: 1-1/2" 3"x2"x2-1/4"**
- Size: **3"x2"x2-1/4"**

- Max. wall thickness: 1-1/8"and Pivoting ends



BOX BC-2020 (formerly A-1D)

4" Single Gang Steel Utility Box With Knockouts For Surface Mounting

- Application: **Surface Mounting**
- Material: **Galvanized Steel**
- Construction Type: **Drawn**
- Cover Included: **None**
- Knockout Options: **Side: 8-1/2" Bottom: 2-1/2" 4"x2-1/8"x1-7/8"**
- Size: **4"x2-1/8"x1-7/8"**

- For secure and easy electrical wiring access.



BOX 53151K

4" SQUARE EXTENSION, 1-1/2" DEEP

- Application: **New Work**
- Material: **Galvanized Steel**
- Box Type: **Extension Ring**
- Construction Type: **Assemble**
- Cover Included: **None**
- Knockout Options: **16(10x1/2" + 6x3/4") 4"x4.2"x1.9"**
- Size: **4"x4.2"x1.9"**

- Adds extra depth for accommodating more wiring and connections in tight spaces



BOX 53171K

4" SQUARE EXTENSION, 2-1/8" DEEP

- Application: **New Work**
- Material: **Galvanized Steel**
- Box Type: **Extension Ring**
- Construction Type: **Assemble**
- Cover Included: **None**
- Knockout Options: **16(10x1/2" + 6x3/4") 4.1"x4.1"x2.4"**
- Size: **4.1"x4.1"x2.4"**

- Adds extra depth for accommodating more wiring and connections in tight spaces

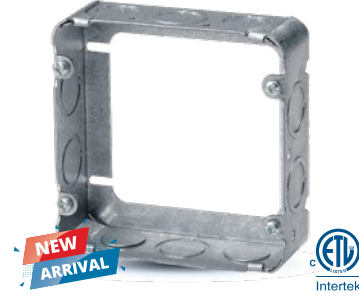


BOX 55151K

OCTAGONAL EXTENSION, 1-1/2" DEEP

- Application: **New Work**
- Material: **Galvanized Steel**
- Box Type: **Extension Ring**
- Construction Type: **Assemble**
- Cover Included: **None**
- Knockout Options: **6(4x1/2" + 2x3/4") 3.7"x3.8"x1.8"**
- Size: **3.7"x3.8"x1.8"**

- Adds extra depth for accommodating more wiring and connections in tight spaces



BOX 73151K

4-11/16" SQUARE EXTENSION, 1-1/2" DEEP

- Application: **New Work**
- Material: **Galvanized Steel**
- Box Type: **Extension Ring**
- Construction Type: **Assemble**
- Cover Included: **None**
- Knockout Options: **16(10x 1/2"+6x 3/4") 4.7"x4.7"x1.5"**
- Size: **4.7"x4.7"x1.5"**

- Adds extra depth for accommodating more wiring and connections in tight spaces



BOX MBD-1K

One Gang Masonry Box That Is 3-1/2" Deep 21CU.IN. With Concentric Knockouts

- Application: **Concrete or Masonry wall**
- Construction Type: **Welded**
- Knockout Options: **1/2" & 3/4" Concentric Knockouts Sides: 8, Bottom: 2, Ends: 3, 1/2", 3/4" & 1 in Concentric Knockouts - 1 3-1/2"x2"x3-3/4"**
- Size: **3-1/2"x2"x3-3/4"**



BOX MBD-2K

2 Gang Masonry Box That Is 3-1/2" Deep 42CU.IN. With Concentric Knockouts

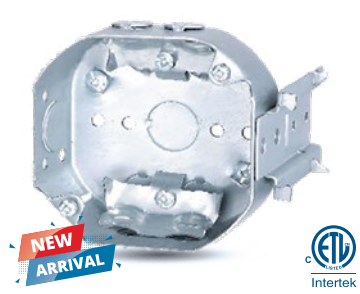
- Application: **Concrete or Masonry wall**
- Construction Type: **Welded**
- Knockout Options: **1/2" & 3/4" Concentric Knockouts sides: 8, Bottom: 4, Ends: 6, 1/2", 3/4" and 1 in Concentric Knockouts - 2 3-3/4"x3-3/4"x3-1/2"**
- Size: **3-3/4"x3-3/4"x3-1/2"**



BOX MBD-3K

3 Gang Masonry Box That Is 3-1/2" Deep 63CU.IN. With Concentric Knockouts

- Application: **Concrete or Masonry wall**
- Construction Type: **Welded**
- Knockout Options: **1/2" & 3/4" Concentric Knockouts Sides: 8, Bottom: 6, Ends: 9, 1/2", 3/4" and 1 in Concentric Knockouts - 3 5-9/16"x3-3/4"x3-1/2"**
- Size: **5-9/16"x3-3/4"x3-1/2"**



BOX 54171-LB

4" Octagonal Box With Side Bracket

- Application: **New work**
- Material: **Galvanized steel**
- Construction Type: **Assemble**
- Cover Included: **None**
- Knockout Options: **None**
- Size: **4"x4"x2-1/8"**

- Offers flexible wiring solutions with easy customization for any electrical setup

ORTECH METAL BOXES DELIVER MAXIMUM DURABILITY

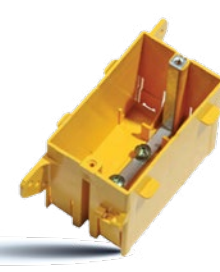


BOX 777 PRM

One Gang Electrical Box That Protects The Wire And The Connection Wire

- Material: **PVC**
- Construction Type: **Junction Box**
- Cover Included: **None**
- Size: **4-21/64"x2-1/4"**

- To make the junction box of strong electricity in wooden wall at home

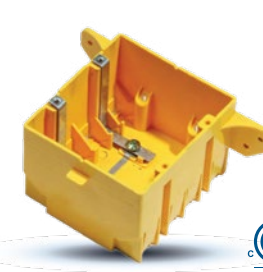


SGP01

One Gang Non-metallic Switch And Outlet Box

- Material: **PVC**
- CU.IN.: **18**
- AWG: **16-10**
- Size: **2-7/8"x3-5/8"x2-1/4"**

- Can be fitted with switches, sockets, GFCI, dimmers and other standard accessories

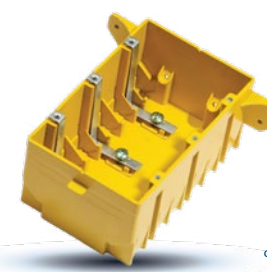


SGP02

Two Gang Non-metallic Switch And Outlet Box

- Material: **PVC**
- CU.IN.: **37**
- AWG: **16-10**
- Size: **2-7/8"x3-5/8"x4-1/8"**

- Can be fitted with switches, sockets, GFCI, dimmers and other standard accessories

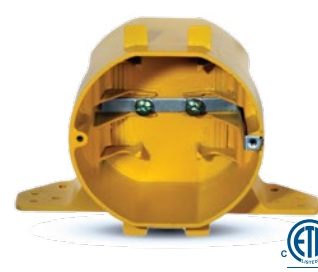


SGP03

Three Gang Non-metallic Switch And Outlet Box

- Material: **PVC**
- CU.IN.: **26**
- AWG: **16-10**
- Size: **2-3/4"x 3-5/8"**

- Can be fitted with switches, sockets, GFCI, dimmers and other standard accessories

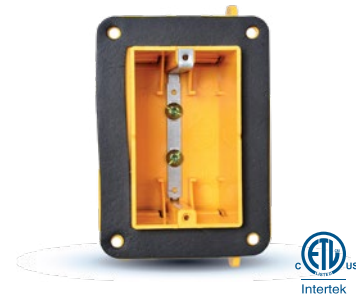


SGP04

Octagon Non-metallic Box

- Material: **PVC**
- CU.IN.: **26**
- AWG: **16-10**
- Size: **2-3/4"x 3-5/8"**

- NON-METALLIC BOXES



WPB01

One Gang Insulated Vapour Proof Non-metallic Switch And Outlet Box

- Material: PVC
- CU.IN.: 18
- AWG: 16-10
- Size: 2-7/8"x3-3/4"x2-1/4"

■ Can be fitted with switches, sockets, GFCI, dimmers and other standard accessories



WPB02

Two Gang Insulated Vapour Proof Non-metallic Switch And Outlet Box

- Material: PVC
- CU.IN.: 37
- AWG: 16-10
- Size: 2-7/8"x3-5/8"x2-1/8"

■ Can be fitted with switches, sockets, GFCI, dimmers and other standard accessories



WPB03

Three Gang Insulated Vapour Proof Non-metallic Switch And Outlet Box

- Material: PVC
- CU.IN.: 51
- AWG: 16-10
- Size: 2-7/8"x3-5/8"x2-1/8"

■ Can be fitted with switches, sockets, GFCI, dimmers and other standard accessories



WPB04

Octagon Insulated Vapour-proof Non-metallic Box

- Material: PVC
- CU.IN.: 26
- AWG: 16-10
- Size: 2-3/4"xØ3-5/8"

■ Can be fitted with switches, sockets, GFCI, dimmers and other standard accessories



WPB05

Four Gang Insulated Vapour-proof Non-metallic Switch And Outlet Box

- Material: PVC
- CU.IN.: 67
- AWG: 16-10
- Size: 2-7/8"x3-5/8"x7-3/4"

■ Can be fitted with switches, sockets, GFCI, dimmers and other standard accessories

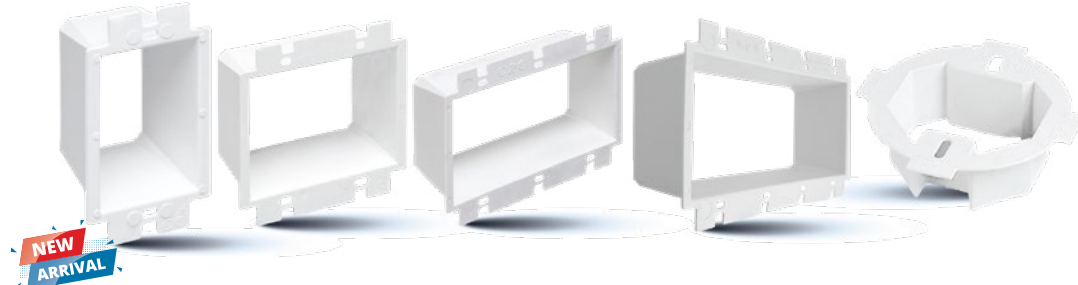


WPB06

Range/Dryer Insulated Vapour-proof Non-metallic Switch And Outlet Box

- Material: PVC
- CU.IN.: 67
- AWG: 16-10
- Size: 2-7/8"x4-11/16"x4-11/16"

■ Can be fitted with switches, sockets, GFCI, dimmers and other standard accessories



OXR-01 | OXR-02 | OXR-03 | OXR-04 | OXR-05

Plastic extension ring for set back metal boxes

- Box Extender, levels and supports the wiring device where the box is set back from the wall surface extends the box up to 1-1/2
- Available in 4 different versions: 1-gang, 2-gang, 3-gang & round/octagonal boxes
- Solves issues related to miscut holes and set back boxes
- 2 hour fire rating. Meets UL 514C:2014 & CSA C22.2#18.2:2006

ORTECH NON-METALLIC BOXES ARE CORROSION RESISTANT

BRIGHT LIGHTS, SMART POWER

ORTECH's LED Drivers are designed to provide reliable and efficient power to LED lighting systems. Built with advanced technology, they ensure smooth, flicker-free performance, making them ideal for residential, commercial, and industrial applications. These drivers are engineered for safety, offering protection from overloads, short circuits, and over-voltage situations, giving peace of mind with every installation.



5YR WARRANTY

CLASS 2 LED DRIVER

OT-12150-TDWJ				OT-12200-TDWJ				OT-12300-TDWJ			
Maximum 150W Class 2 LED Driver Available In 12V DC Output				Maximum 200W Class 2 LED Driver Available In 12V DC Output				Maximum 300W Class 2 LED Driver Available In 12V DC Output			
■ Input Voltage:	110-277V AC	■ Output Voltage:	12V DC	■ Input Voltage:	110-277V AC	■ Output Voltage:	12V DC	■ Input Voltage:	110-277V AC	■ Output Voltage:	12V DC
■ Wattage:	150W	■ Efficiency:	85%	■ Wattage:	200W	■ Efficiency:	83%	■ Wattage:	300W	■ Efficiency:	86%
■ Amps:	12.5A	■ Withstand Voltage:	I/P-O/P: 1880V AC	■ Amps:	16.66A	■ Withstand Voltage:	I/P-O/P: 1880V AC	■ Amps:	25A	■ Withstand Voltage:	I/P-O/P: 1880V AC
■ Frequency Range:	47-63Hz	■ Isolation Resistance:	I/P-O/P: 100MΩ / 500V DC / +25°C / 70% RH	■ Frequency Range:	47-63Hz	■ Isolation Resistance:	I/P-O/P: 100MΩ / 500V DC / +25°C / 70% RH	■ Frequency Range:	47-63Hz	■ Isolation Resistance:	I/P-O/P: 100MΩ / 500V DC / +25°C / 70% RH
■ Over Loading:	120%			■ Over Loading:	120%			■ Over Loading:	120%		
■ Operating Humidity:	20-90%RH			■ Operating Humidity:	20-90%RH			■ Operating Humidity:	20-90%RH		
■ Operating Temp.:	-40°C~+60°C			■ Operating Temp.:	-40°C~+60°C			■ Operating Temp.:	-40°C~+60°C		
				■ Flicker-free & compatible with Forward phase, Reverse phase, TRIAC, MLV, ELV Dimmers							



CLASS 2
LED DRIVER



OT-08D

Maximum 8W Class 2 Driver For LED Lighting And Moving Sign Applications

- Input Voltage: **100-130V AC**
- Output Voltage: **12V DC**
- Maximum Wattage: **8W**
- Amps: **0.65A**
- Frequency Range: **47-63Hz**
- Efficiency : **>80%**
- Grade of Protection: **IP20**
- AC Current (max.): **0.17A**
- Operating Temp.: **-30°C ~ +45°C**
- Over Loading: **≤120%**
- Short Circuit: **Recover Automatically**

CLASS 2
LED DRIVER



OT-15D

Maximum 15W Class 2 Driver For LED Lighting And Moving Sign Applications

- Input Voltage: **100-130V AC**
- Output Voltage: **12V DC**
- Maximum Wattage: **15W**
- Amps: **1.25A**
- Frequency Range: **47-63Hz**
- Efficiency : **>80%**
- Grade of Protection: **IP20**
- AC Current (max.): **0.33A**
- Operating Temp.: **-25°C ~ +45°C**
- Over Loading: **≤120%**
- Short Circuit: **Recover Automatically**

CLASS 2
LED DRIVER



OT-24D

Maximum 24W Class 2 Driver For LED Lighting And Moving Sign Applications

- Input Voltage: **100-130V AC**
- Output Voltage: **12V DC**
- Maximum Wattage: **24W**
- Amps: **2A**
- Frequency Range: **47-63Hz**
- Efficiency : **82%**
- Grade of Protection: **IP20**
- AC Current (max.): **0.55A**
- Operating Temp.: **-30°C ~ +45°C**
- Over Loading: **≤120%**
- Short Circuit: **Recover Automatically**

CLASS 2
LED DRIVER



OT-48D

Maximum 48W Class 2 Driver For LED Lighting And Moving Sign Applications

- Input Voltage: **108-132V AC**
- Output Voltage: **12V DC**
- Maximum Wattage: **48W**
- Amps: **4A**
- Frequency Range: **47-63Hz**
- Efficiency : **86%**
- Grade of Protection: **IP20**
- AC Current (max.): **4A**
- Operating Temp.: **-20°C ~ +40°C**
- Over Loading: **≤120%**
- Short Circuit: **Recover Automatically**

CLASS 2
LED DRIVER



OT-60D

Maximum 60W Class 2 Driver For LED Lighting And Moving Sign Applications

- Input Voltage: **108-127V AC**
- Output Voltage: **12V DC**
- Maximum Wattage: **60W**
- Amps: **5A**
- Frequency Range: **47-63Hz**
- Efficiency : **86%**
- Grade of Protection: **IP20**
- AC Current (max.): **1.5A**
- Operating Temp.: **-20°C ~ +40°C**
- Over Loading: **≤120%**
- Short Circuit: **Recover Automatically**

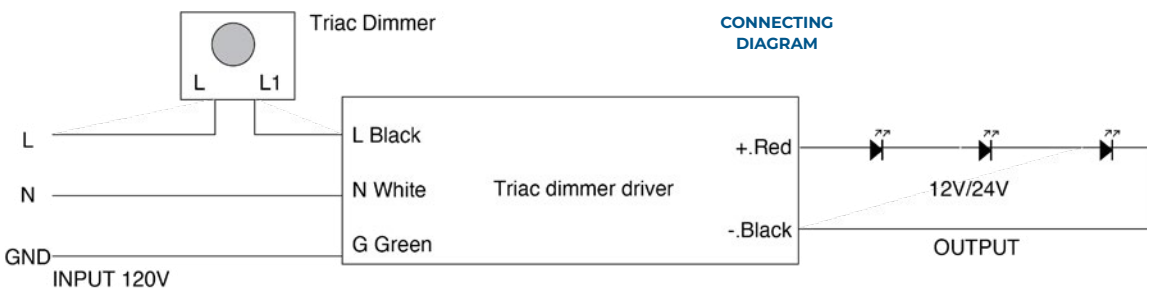
CLASS 2
LED DRIVER



OT-96D

Maximum 96W Class 2 Driver For LED Lighting And Moving Sign Applications

- Input Voltage: **108-132V AC**
- Output Voltage: **12V DC**
- Maximum Wattage: **96W**
- Amps: **4A**
- Frequency Range: **60Hz**
- Efficiency : **80%**
- Grade of Protection: **IP20**
- Operating Temp.: **-25°C ~ +45°C**
- Over Loading: **≤120%**
- Short Circuit: **Recover Automatically**



5YR WARRANTY

CLASS 2 LED DRIVER

OT-24150-TDWJ

Maximum 150W Class 2 LED Driver Available In 24V DC Output

- Input Voltage: **110-277V AC**
- Wattage: **150W**
- Amps: **6.25A**
- Frequency Range: **47-63Hz**
- Operating Humidity: **20-90%RH**
- Operating Temp.: **-40°C~+60°C**
- Output Voltage: **24V DC**
- Efficiency: **85%**
- Withstand Voltage: **I/P-O/P: 1880V AC**
- Isolation Resistance: **I/P-O/P: 100MΩ / 500V DC / +25°C / 70% RH**

OT-24200-TDWJ

Maximum 200W Class 2 LED Driver Available In 24V DC Output

- Input Voltage: **110-277V AC**
- Wattage: **200W**
- Amps: **8.33A**
- Frequency Range: **47-63Hz**
- Operating Humidity: **20-90%RH**
- Operating Temp.: **-40°C~+60°C**
- Output Voltage: **24V DC**
- Efficiency: **86%**
- Withstand Voltage: **I/P-O/P: 1880V AC**
- Isolation Resistance: **I/P-O/P: 100MΩ / 500V DC / +25°C / 70% RH**

OT-24300-TDWJ

Maximum 300W Class 2 LED Driver Available In 24V DC Output

- Input Voltage: **110-277V AC**
- Wattage: **300W**
- Amps: **12.5A**
- Frequency Range: **47-63Hz**
- Operating Humidity: **20-90%RH**
- Operating Temp.: **-40°C~+60°C**
- Output Voltage: **24V DC**
- Efficiency: **88%**
- Withstand Voltage: **I/P-O/P: 1880V AC**
- Isolation Resistance: **I/P-O/P: 100MΩ / 500V DC / +25°C / 70% RH**



BRIGHT LIGHTS, POWERED RIGHT

ORTECH's LED drivers are highly energy-efficient, helping reduce energy consumption while maximizing light output. Available in a variety of wattages and configurations, they are a versatile solution for powering different types of LED fixtures, ensuring consistent and long-lasting performance.



SEAL THE DEAL, WITH SOLID STEEL

ORTECH's Metal Box Cover Plates are designed for durability and strength, offering solid protection for electrical boxes in residential, commercial, and industrial settings. Made from high-quality metal, these covers ensure safety and longevity, providing a secure seal that protects wiring and electrical components from dust, debris, and external damage.

Available in a range of sizes and finishes, **ORTECH's metal box cover plates** not only offer functionality but also add a clean, professional look to electrical installations. Their sleek design blends seamlessly into various environments, making them a versatile option for different projects.

Engineered to meet stringent safety standards, ORTECH's cover plates are easy to install and fit securely in place, ensuring electrical systems remain well-protected.











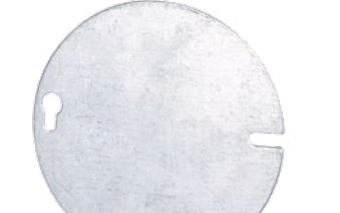

 NEW ARRIVAL CM-4 Metal Ceiling / Wall Cover <ul style="list-style-type: none">■ Easily primed and painted to match or complement walls/ceilings■ Won't bow, crack or distort during installation■ Includes screw(s) in matching finish■ Cover surface is 1/4 in. from wall when installed■ Corners are contoured to fit handy boxes■ Cover mounts to devices	 NEW ARRIVAL CP-4 Plastic Ceiling / Wall Box Cover <ul style="list-style-type: none">■ Comes ready to install with provided #8 screws or back out existing screws to accept notched bracket■ Deeper cover works with pan boxes without the need to cut the post■ Attractive cover plate - After installation, screws don't show on the ceiling/wall■ Fits 3-1/2" and 4" round or octagonal boxes■ Paintable plastic cover plate eliminates the scratches you get with painted metal covers	 PLATE 11C10 One Gang Utility Metal Box Cover Plate <ul style="list-style-type: none">■ Size: 4"x2-1/2"■ Material: Galvanized Steel■ Knockout Options: None■ Durable protection with a sleek finish for secure and stylish coverage of your utility boxes	 NEW ARRIVAL PLATE 11C4 One Gang Square Device Cover Plate <ul style="list-style-type: none">■ Size: 4"x2-1/2"■ Material: Galvanized Steel■ Knockout Options: None■ Durable protection with a sleek finish for secure and stylish coverage of your utility boxes	 PLATE 52-C6 Formerly LD-4K Square 1/2" Knockout Cover For Boxes <ul style="list-style-type: none">■ Size: 4"x4"■ Material: Galvanized Steel■ Knockout Options: (1) 1/2"■ Reliable and sturdy 1/2" knockout cover, sealing your electrical boxes with ease and precision
 PLATE 52C1 4" Square Flat Steel Cover <ul style="list-style-type: none">■ Size: 4"x4"■ Material: Galvanized Steel■ Knockout Options: None■ Reliable and sturdy cover, sealing your electrical boxes with ease and precision	 PLATE 52C13 4" One Gang Square Device Cover <ul style="list-style-type: none">■ Size: 4"x4"x1/2"■ Material: Galvanized Steel■ Knockout Options: None■ Reliable and sturdy cover, sealing your electrical boxes with ease and precision	 PLATE 52C17 4" Two Gang Square Device Cover With 1/2" Raised Device Cover <ul style="list-style-type: none">■ Size: 4"x4"x1/2"■ Material: Galvanized Steel■ Knockout Options: None■ Reliable and sturdy cover, sealing your electrical boxes with ease and precision	 PLATE 54-C1 Formerly LD-2, 4" Flat Round Blank Cover For Octagon Boxes <ul style="list-style-type: none">■ Size: 4"x4"■ Material: Galvanized Steel■ Knockout Options: None■ Reliable and sturdy cover, sealing your electrical boxes with ease and precision	 PLATE 54-C6 Formerly LD-1K, 4" Round 1/2" Knockout Cover For Octagon Boxes <ul style="list-style-type: none">■ Size: 4"x4"■ Material: Galvanized Steel■ Knockout Options: (1) 1/2"■ Reliable and sturdy 1/2" knockout cover, sealing your electrical boxes with ease and precision



PLATE 54C6-WH

4" Round Cover With Centre Knockout

- Size: 4"x4"
- Material: Galvanized Steel
- Knockout Options: None

Reliable and sturdy cover, sealing your electrical boxes with ease and precision



PLATE 66PP

Cable Protection Plate For Wood Stud

- Size: 1-3/8"x3"
- Material: Galvanized Steel
- Knockout Options: None

Shield your cables with robust protection, securing them safely behind wood studs



PLATE 72-C6

Formerly LD-5K Square 1/2" Knockout Cover For Boxes

- Size: 4-11/16"x4-11/16"
- Material: Galvanized Steel
- Knockout Options: (1) 1/2"

Reliable and sturdy cover, sealing your electrical boxes with ease and precision



PLATE 72C1

4-11/16" Square Cover

- Size: 4-11/16"x4-11/16"
- Material: Galvanized Steel
- Knockout Options: None

Reliable and sturdy cover, sealing your electrical boxes with ease and precision




PLATE 99PP

Protector Plate For Wood Studs

- Size: 1-1/2"x5"
- Material: Galvanized Steel
- Knockout Options: None

Shield your cables with robust protection, securing them safely behind wood studs



Durable Construction

Easy installation with a precise fit

Provides secure electrical box protection

Meets industry safety standards

Available in various sizes and finishes

Sleek design for a clean, professional look

HOLD IT TIGHT, MOUNT IT RIGHT

ORTECH's Mounting Plates are designed to provide reliable and secure support for a wide range of lighting fixtures. Engineered with precision, these plates ensure easy installation and long-lasting stability, making them ideal for both residential and commercial projects. Their robust construction helps maintain the integrity of your fixtures, keeping them securely in place.







NEW ARRIVAL

PLATE13-1

New Construction Plate For Recessed Lighting

- Hole Size: Ø2-1/8"
- Material: Galvanized Steel

COMPATIBLE LIGHTS

ORTECH 1" LED Slim Lights
(SLIM-RG1-5CCT)

Includes holes for easy installation



NEW ARRIVAL

PLATE13-2

New Construction Plate For Recessed Lighting

- Hole Size: Ø2-5/8"
- Material: Galvanized Steel

COMPATIBLE LIGHTS

ORTECH 2" LED Slim Lights
(SLIM-RG2-5CCT, SLIM-TL2-5CCT)

Includes holes for easy installation



NEW ARRIVAL

PLATE13-3

New Construction Plate For Recessed Lighting

- Hole Size: Ø2-15/16"
- Material: Galvanized Steel

COMPATIBLE LIGHTS

ORTECH 3" LED Slim Lights
(DISC-RG3, SLIM3CONT-3CCT, SLIM3CONT-WH, SLIM3GIM-5CCT, SLIM3-5CCT)

Includes holes for easy installation



NEW ARRIVAL

PLATE13-3A

New Construction Plate For Recessed Lighting

- Hole Size: Ø3-15/32"
- Material: Galvanized Steel

COMPATIBLE LIGHTS

ORTECH LED Slim Lights
(SLIM-RG3-5CCT, SLIM-RG4-5CCT)

Includes holes for easy installation



NEW ARRIVAL

PLATE13-4A

New Construction Plate Made Up Of Galvanized steel For Recessed Lighting

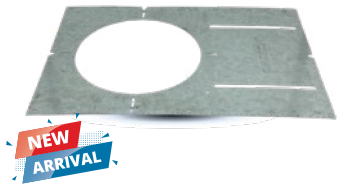
- Hole Size: Ø4-1/4"

COMPATIBLE LIGHTS

ORTECH 4" LED Slim Lights
(OLT2-410-5CCTWH, OLT2-412-WH, SLIM4-3CCT, SLIM4BP-5CCT, SLIM4CONT-3CCT, SLIM4DGF-5CCT, SLIM4DGR-5CCT, SLIM4DR-5CCT, SLIM4GIM, SLIM4GIM-5CCT, SLIM4ID-WH, SLIM4RG, SLIM4RE-3CCT, SLIM4-5CCT, SLIM4CONT-5CCT, SLIM4-ECON, SLIM4CONT-ECON, SLIM4FR-5CCT, SLIM4FR-FL-5CCT)

Includes holes for easy installation

MOUNTING PLATES 16



NEW ARRIVAL

WITH LIP

PLATE13-6

New Construction Plate For Recessed Lighting

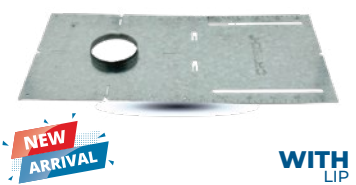
■ Hole Size: Ø6-1/4"

■ Material: Galvanized Steel

COMPATIBLE LIGHTS

ORTECH 6" LED Slim Lights
(OLT2-615-5CCTWH, SLIM6-3CCT, SLIM6-5CCT, SLIM6ID-WH)

■ Includes holes for easy installation



NEW ARRIVAL

WITH LIP

PLATE13-1-L

New Construction Plate For Recessed Lighting With Lip

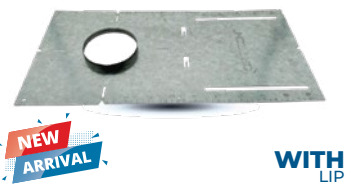
■ Hole Size: Ø2-1/8"

■ Material: Galvanized Steel

COMPATIBLE LIGHTS

ORTECH 1" LED Slim Lights
(SLIM-RG1-5CCT)

■ Includes holes for easy installation



NEW ARRIVAL

WITH LIP

PLATE13-2-L

New Construction Plate For Recessed Lighting With Lip

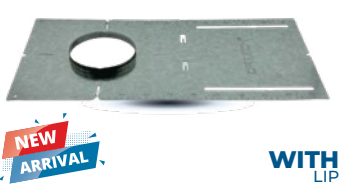
■ Hole Size: Ø2-5/8"

■ Material: Galvanized Steel

COMPATIBLE LIGHTS

ORTECH 2" LED Slim Lights
(SLIM-RG2-5CCT, SLIM-TL2-5CCT)

■ Includes holes for easy installation



NEW ARRIVAL

WITH LIP

PLATE13-3-L

New Construction Plate For Recessed Lighting With Lip

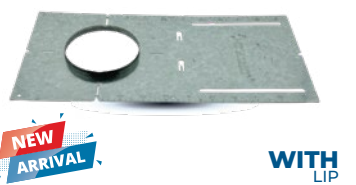
■ Hole Size: Ø2-15/16"

■ Material: Galvanized Steel

COMPATIBLE LIGHTS

ORTECH 3" LED Slim Lights
(DISC-RG3, SLIM3CONT-3CCT, SLIM3CONT-WH, SLIM3GIM-5CCT, SLIM3-5CCT)

■ Includes holes for easy installation



NEW ARRIVAL

WITH LIP

PLATE13-3A-L

New Construction Plate For Recessed Lighting With Lip

■ Hole Size: Ø3-15/32"

■ Material: Galvanized Steel

COMPATIBLE LIGHTS

ORTECH LED Slim Lights
(SLIM-RG3-5CCT, SLIM-RG4-5CCT)

■ Includes holes for easy installation



PLATE26-1

New Construction Plate For Recessed Lighting

■ Hole Size: Ø2-1/8"

■ Material: Galvanized Steel

COMPATIBLE LIGHTS

ORTECH 1" LED Slim Lights
(SLIM-RG1-5CCT)

■ Includes holes for easy installation



PLATE26-2

New Construction Plate For Recessed Lighting

■ Hole Size: Ø2-5/8"

■ Material: Galvanized Steel

COMPATIBLE LIGHTS

ORTECH 2" LED Slim Lights
(SLIM-RG2-5CCT, SLIM-TL2-5CCT)

■ Includes holes for easy installation



PLATE26-3

New Construction Plate For Recessed Lighting

■ Hole Size: Ø2-15/16"

■ Material: Galvanized Steel

COMPATIBLE LIGHTS

ORTECH 3" LED Slim Lights
(DISC-RG3, SLIM3CONT-3CCT, SLIM3CONT-WH, SLIM3GIM-5CCT, SLIM3-5CCT)

■ Includes holes for easy installation



PLATE26-3A

New Construction Plate For Recessed Lighting

■ Hole Size: Ø3-15/32"

■ Material: Galvanized Steel

COMPATIBLE LIGHTS

ORTECH LED Slim Lights
(SLIM-RG3-5CCT, SLIM-RG4-5CCT)

■ Includes holes for easy installation



PLATE26-4

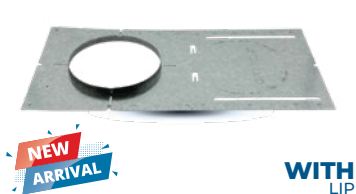
New Construction Plate Made Up Of Galvanized Steel For Recessed Lighting

■ Hole Size: Ø4-1/8"

COMPATIBLE LIGHTS

ORTECH 4" LED Slim Lights
(DISC4-3CCT, DISC4FL-GM-WH, OLT2-410-5CCTWH, OLT2-412-WH, SLIM4-3CCT, SLIM4BP-5CCT, SLIM-4CONT-3CCT, SLIM4DGF-5CCT, SLIM4DGR-5CCT, SLIM4DR-5CCT, SLIM4GIM, SLIM4GIM-5CCT, SLIM4ID-WH, SLIM4RG, SLIM4HE-3CCT, SLIM4-5CCT, SLIM4CONT-5CCT, SLIM4-ECON, SLIM-4CONT-ECON, SLIM4FR-5CCT, SLIM4FR+FL-5CCT)

■ Includes holes for easy installation



NEW ARRIVAL

WITH LIP

PLATE13-4A-L

New Construction Plate For Recessed Lighting With Lip

■ Hole Size: Ø4-1/4"

■ Material: Galvanized Steel

COMPATIBLE LIGHTS

ORTECH 4" LED Slim Lights
(DISC4-3CCT, DISC4FL-GM-WH, OLT2-410-5CCTWH, OLT2-412-WH, SLIM4-3CCT, SLIM4BP-5CCT, SLIM-4CONT-3CCT, SLIM4DGF-5CCT, SLIM4DGR-5CCT, SLIM4DR-5CCT, SLIM4GIM, SLIM4GIM-5CCT, SLIM4ID-WH, SLIM4RG, SLIM4HE-3CCT, SLIM4-5CCT, SLIM4CONT-5CCT, SLIM4-ECON, SLIM-4CONT-ECON, SLIM4FR-5CCT, SLIM4FR+FL-5CCT)

■ Includes holes for easy installation



NEW ARRIVAL

WITH LIP

PLATE13-6-L

New Construction Plate For Recessed Lighting With Lip

■ Hole Size: Ø6-1/4"

■ Material: Galvanized Steel

COMPATIBLE LIGHTS

ORTECH 6" LED Slim Lights
(OLT2-615-5CCTWH, SLIM6-3CCT, SLIM6-5CCT, SLIM6ID-WH)

■ Includes holes for easy installation

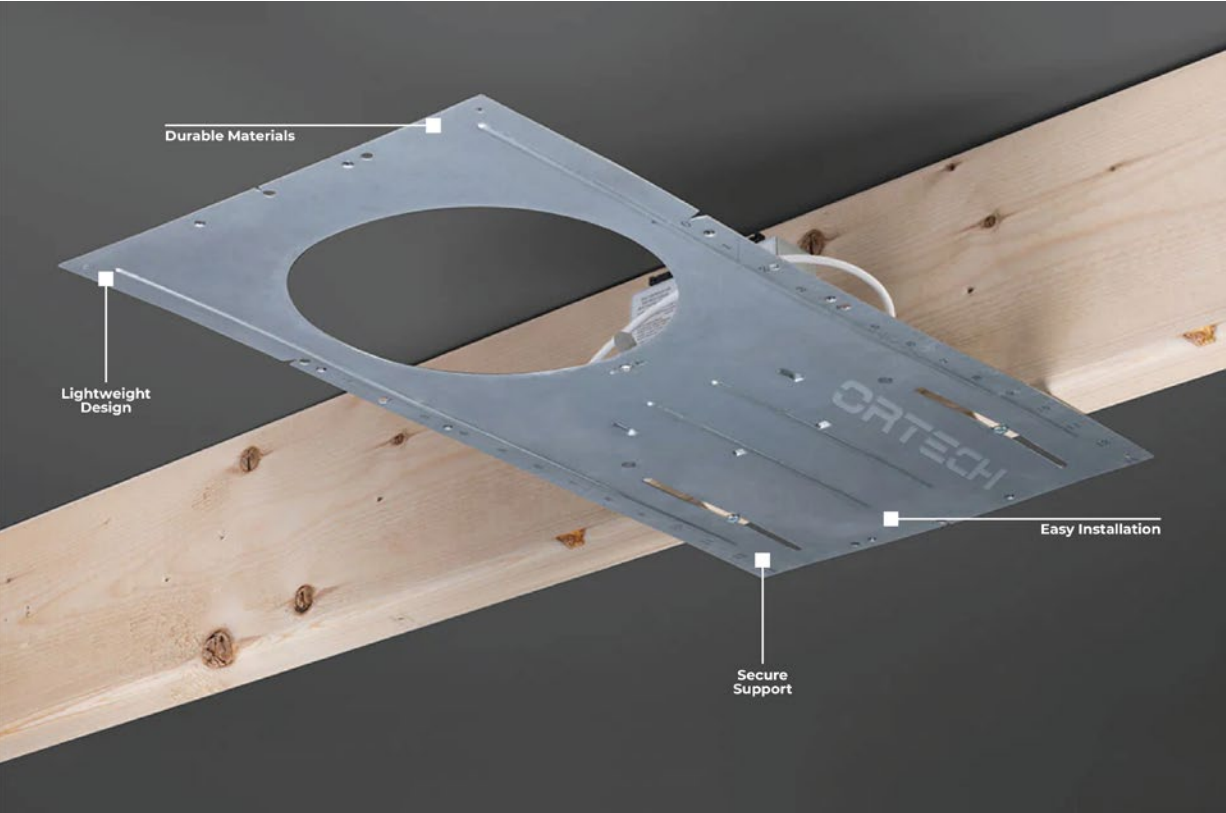


PLATE26-4A

New Construction Plate For Recessed Lighting

■ Hole Size: Ø4-1/4"

■ Material: Galvanized Steel

COMPATIBLE LIGHTS

ORTECH 4" LED Slim Lights
(DISC4-3CCT, DISC4FL-GM-WH, OLT2-410-5CCTWH, OLT2-412-WH, SLIM4-3CCT, SLIM4BP-5CCT, SLIM-4CONT-3CCT, SLIM4DGF-5CCT, SLIM4DGR-5CCT, SLIM4DR-5CCT, SLIM4GIM, SLIM4GIM-5CCT, SLIM4ID-WH, SLIM4RG, SLIM4HE-3CCT, SLIM4-5CCT, SLIM4CONT-5CCT, SLIM4-ECON, SLIM-4CONT-ECON, SLIM4FR-5CCT, SLIM4FR+FL-5CCT)

■ Includes holes for easy installation



PLATE26-6

New Construction Plate For Recessed Lighting

■ Hole Size: Ø6-1/4"

■ Material: Galvanized Steel

COMPATIBLE LIGHTS

ORTECH 6" LED Slim Lights
(OLT2-615-5CCTWH, SLIM6-3CCT, SLIM6-5CCT, SLIM6ID-WH)

■ Includes holes for easy installation

ORTECH
CONSTRUCTION
PLATES ARE
RELIABLE AND
DURABLE



NEW ARRIVAL

WITH LIP

PLATE26-1-L

New Construction Plate For Recessed Lighting With Lip

■ Hole Size: Ø2-1/8"

■ Material: Galvanized Steel

COMPATIBLE LIGHTS

ORTECH 1" LED Slim Lights
(SLIM-RG1-5CCT)

■ Includes holes for easy installation



NEW ARRIVAL

WITH LIP

PLATE26-2-L

New Construction Plate For Recessed Lighting With Lip

■ Hole Size: Ø2-5/8"

■ Material: Galvanized Steel

COMPATIBLE LIGHTS

ORTECH LED Slim Lights
(SLIM-RG2-5CCT, SLIM-TL2-5CCT)

■ Includes holes for easy installation



NEW ARRIVAL

WITH LIP

PLATE26-3-L

New Construction Plate For Recessed Lighting With Lip

- Hole Size: Ø2-15/16"
- Material: Galvanized Steel

COMPATIBLE LIGHTS

ORTECH 3" LED Slim Lights
(DISC-RG3, SLIM3CONT-3CCT, SLIM3CONT-WH, SLIM3GIM-5CCT, SLIM3-5CCT)

■ Includes holes for easy installation



NEW ARRIVAL

WITH LIP

PLATE26-3A-L

New Construction Plate For Recessed Lighting With Lip

- Hole Size: Ø3-15/32"
- Material: Galvanized Steel

COMPATIBLE LIGHTS

ORTECH LED Slim Lights
(SLIM-RG3-5CCT, SLIM-RG4-5CCT)

■ Includes holes for easy installation



NEW ARRIVAL

WITH LIP

PLATE26-4A-L

New Construction Plate For Recessed Lighting With Lip

- Hole Size: Ø4-1/4"
- Material: Galvanized Steel

COMPATIBLE LIGHTS

ORTECH 4" LED Slim Lights
(DISC4-3CCT, DISC4FL-GM-WH, OLT2-410-5CCTWH, OLT2-412-WH, SLIM4-3CCT, SLIM4BP-5CCT, SLIM4CONT-3CCT, SLIM4DGF-5CCT, SLIM4DGR-5CCT, SLIM4DR-5CCT, SLIM4GIM, SLIM4GIM-5CCT, SLIM4ID-WH, SLIM4RG, SLIM4HE-3CCT, SLIM4-5CCT, SLIM4CONT-5CCT, SLIM4-ECON, SLIM4CONT-ECON, SLIM4FR-5CCT, SLIM4FR+FL-5CCT)

■ Includes holes for easy installation



NEW ARRIVAL

WITH LIP

PLATE26-6-L

New Construction Plate For Recessed Lighting With Lip

- Hole Size: Ø6-1/4"
- Material: Galvanized Steel

COMPATIBLE LIGHTS

ORTECH 6" LED Slim Lights
(OLT2-615-5CCTWH, SLIM6-3CCT, SLIM6-5CCT, SLIM6ID-WH)

■ Includes holes for easy installation



PLATE2-HB

Mounting Plate With Four Way type Hangar Bar Installation

- Hole Size: Ø2-5/8"Galvanized Steel
- Material: Galvanized Steel

COMPATIBLE LIGHTS

ORTECH 2" LED Slim Lights

■ Hanger bar install in longer side

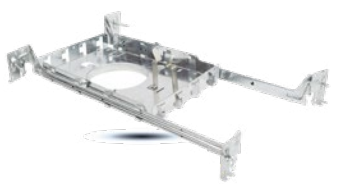


PLATE3-HB

Mounting Plate With Four Way type Hangar Bar Installation

- Hole Size: Ø3-3/16"
- Material: Galvanized Steel

COMPATIBLE LIGHTS

ORTECH 3" LED Slim Lights

■ Hanger bar install in longer side



PLATE3A-HB

Mounting Plate With Four Way type Hangar Bar Installation

- Hole Size: Ø3-30/64"
- Material: Galvanized Steel

COMPATIBLE LIGHTS

ORTECH LED Slim Lights
(SLIM-RG3-5CCT, SLIM-RG4-5CCT)

■ Hanger bar install in longer side

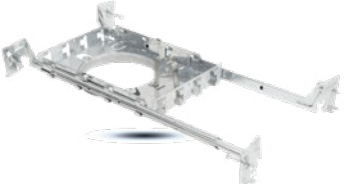


PLATE4-HB

Mounting Plate With Four Way type Hangar Bar Installation

- Hole Size: Ø4-1/8"
- Material: Galvanized Steel

COMPATIBLE LIGHTS

ORTECH 4" LED Slim Lights

■ Hanger bar install in longer side

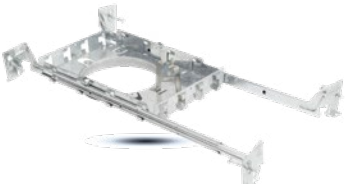


PLATE4A-HB

Mounting Plate With Four Way type Hangar Bar Installation

- Hole Size: Ø4-16/64"
- Material: Galvanized Steel

COMPATIBLE LIGHTS

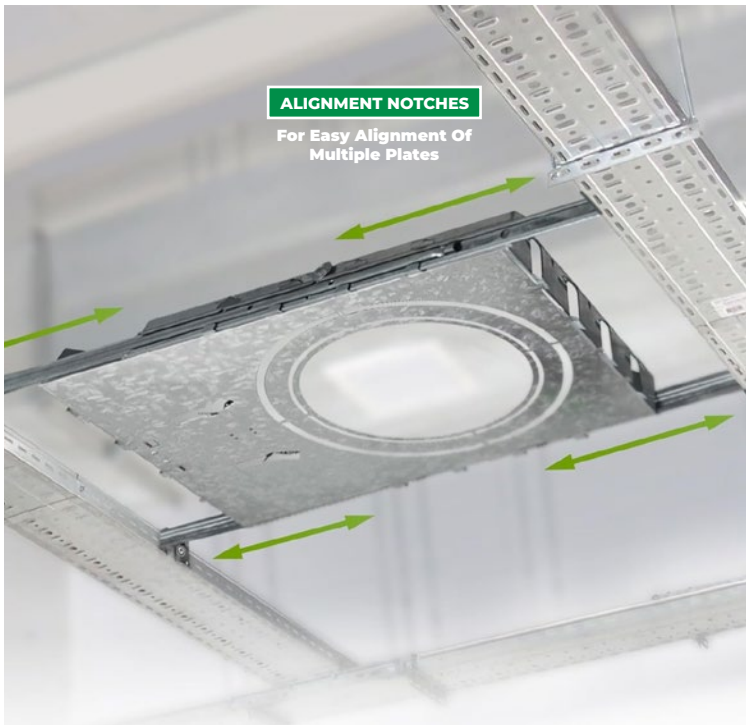
ORTECH 4" LED Slim Lights
(SLIM4FR-5CCT, SLIM4FL+FR-5CCT, SLIM4-5CCT, SLIM4CONT-5CCT, SLIM4-ECON, SLIM4CONT-ECON)

■ Hanger bar install in longer side



EASY TO INSTALL

Adjust The Mounting Plate Position And Fix It With Screws Or Nails



ALIGNMENT NOTCHES

For Easy Alignment Of Multiple Plates

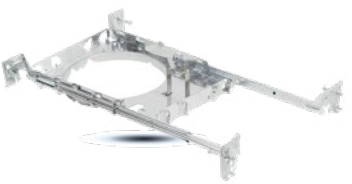


PLATE6-HB

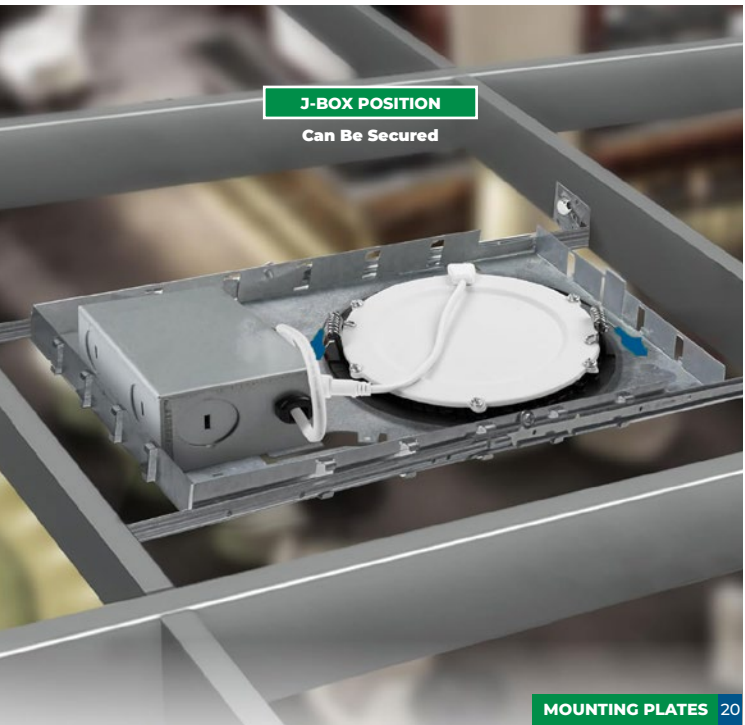
Mounting Plate With Four Way type Hangar Bar Installation

- Hole Size: Ø6-1/4"
- Material: Galvanized Steel

COMPATIBLE LIGHTS

ORTECH 6" LED Slim Lights

■ Hanger bar install in longer side



J-BOX POSITION

Can Be Secured

MOUNTING MADE EASY AND EFFICIENT

ORTECH's Recessed Lighting Housing is engineered for seamless installation and exceptional performance, providing a sleek solution for both residential and commercial lighting needs. Crafted from high-quality materials, these mounts ensure durability and stability, allowing for secure placement of recessed fixtures in various ceiling types. Their innovative design minimizes installation time, making them an ideal choice for contractors and DIY enthusiasts alike.

Designed to accommodate a wide range of recessed lights, **ORTECH's** housings offer versatility in application while maintaining an unobtrusive aesthetic. The mounts are compatible with different sizes and styles of fixtures, providing flexibility to meet diverse design requirements. This adaptability ensures that your lighting can be tailored to create the perfect ambiance in any space.

Safety is a top priority, and **ORTECH's** recessed lighting housings are built to meet rigorous industry standards.



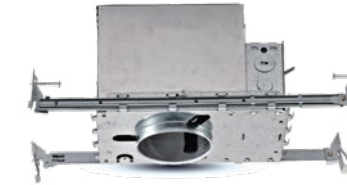
3"
RECESSED HOUSING



ODH2-3

Commercial/Residential Grade GU10 Base 3" Line Voltage Recessed Housing

- Lamp Type: **GU10** (50W Max.)
- Input Voltage: **120V AC**
- Output Voltage: **120V AC**
- Mounting: **Four-sided**
- Included: **Detachable socket**
Push-in connectors
Cover to protect exposed cone from paint



3"
RECESSED HOUSING



ODH2-3IA

Commercial/Residential Grade GU10 Base 3" Line Voltage Air-Tight Recessed Housing

- Lamp Type: **GU10** (50W Max.)
- Input Voltage: **120V AC**
- Output Voltage: **120V AC**
- Mounting: **Four-sided**
- Included: **Push-in connectors**
Cover to protect exposed cone from paint



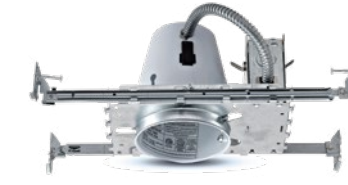
4"
RECESSED HOUSING



ODH1-4IAG

4" Residential Grade GU10 35W Max. Thermally Protected Air-Tight Housing

- Lamp Type: **GU10** (35W Max.)
- Input Voltage: **120V AC**
- Output Voltage: **120V AC**
- Mounting: **Four-sided**
- Included: **Socket**
Push-in connectors



4"
RECESSED HOUSING



ODH2-4IA2

4" Commercial/Residential Grade Line Voltage Air-Tight Recessed Housing

- Lamp Type: **R30** (35W Max.)
PAR20 (50W Max.)
- Input Voltage: **120V AC**
- Output Voltage: **120V AC**
- Mounting: **Four-sided**
- Included: **Detachable socket**
Push-in connectors
Cover to protect exposed cone from paint



4"
RECESSED HOUSING



ODH2-4RS

4" Commercial/Residential Grade Remodel Air-Tight Housing For Insulated Ceilings

- Lamp Type: **PAR20** (50W Max.)
- Input Voltage: **120V AC**
- Output Voltage: **120V AC**
- Diameter: **Ø4-1/2" (cut hole size)**
- Included: **Screw down clamps**
Adjustable socket bracket



4"
RECESSED HOUSING



ODH1-4RSICATC

4" Commercial Grade Thermally Protected Air-Tight Retrofit Design Housing

- Lamp Type: **GU10** (35W Max.)
PAR16 (35W Max.)
- Input Voltage: **120V AC**
- Output Voltage: **120V AC**
- Diameter: **Ø4-1/2" (cut hole size)**
- Included: **Screw down clamps**
Four hole quick connector



YOUR STYLE, YOUR VISION

ORTECH's Recessed Lighting Trims are designed to enhance the aesthetic appeal and functionality of your lighting fixtures. Available in a variety of styles, finishes, and sizes, these trims provide the perfect solution for customizing your lighting design to suit any interior décor. Whether you're looking for a sleek, modern look or a more traditional aesthetic, **ORTECH** offers a range of options to help you achieve your desired ambiance.

Built with high-quality materials, **ORTECH's Trims** ensure durability and longevity while maintaining a stylish appearance. The easy installation process allows homeowners and contractors to quickly upgrade their recessed lighting, making it an ideal choice for renovations or new constructions. With a focus on both form and function, these trims are designed to seamlessly integrate into any ceiling and provide optimal light distribution.

Customization is at the heart of **ORTECH's Recessed Lighting Trims**, allowing you to create a lighting scheme that reflects your personal style.



3" RECESSED TRIMS

ODT2-351

Round 3" GU10 35W Max. Recessed Light Trim Mounted With Three Spring Clips

■ To be used in low and line voltage application

■ Painted finish is powder coated for abrasion resistance



ODT2-351 WH
White Trim
White Baffle



ODT2-351 HZ
White Trim
Haze Ring



ODT2-351 SN
Satin Nickel Trim
Satin Nickel Baffle



ODT2-351 ORB
Oil Rubbed
Bronze



ODT2-351 RBK
Black Trim
Black Baffle



ODT2-351 BK
Black Trim
White Trim



3" RECESSED TRIMS

ODT2-352 SG WH

Round 3" GU10 35W Max. Recessed Light Trims With Lamp Loading From The Back

■ With frosted glass for bathroom use

■ White powder coating finished for rust-proof



3" RECESSED TRIMS

ODT2-352G

3" GU10 35W Max. Gimbal Recessed Light Trim Mounted With Three Spring Clips

■ To be used in low and line voltage application

■ Painted finish is powder coated for abrasion resistance



ODT2-352G WH
White Trim
White Baffle



ODT2-352G SN
Satin Nickel Trim
Satin Nickel Baffle



ODT2-352G ORB
Oil Rubbed
Bronze



4" RECESSED TRIMS

ODT1-451

Round 4" MR16 50W Max. Voltage Trim With Various Colour Options

■ To be used in low and line voltage application

■ Painted finish is powder coated for abrasion resistance



ODT1-451 WH
White Trim



ODT1-451 SN
Satin Nickel
Trim



ODT1-451 ORB
Oil Rubbed
Bronze Trim



ODT1-451 BK
Black Trim



4" RECESSED TRIMS

ODT1-452

Round 4" MR16 50W Max. Reflector Available In Various Colours

■ To be used in low and line voltage application

■ Painted finish is powder coated for abrasion resistance



ODT1-452 WHZ
White Haze
Reflector



ODT1-452 SNCL
Satin Nickel Ring
Clear Reflector



ODT1-452 CL
Clear Reflector



ODT1-452 SN-ABK
Satin Nickel Ring
Black Alzak Reflector



ODT1-452 ABK
Black Alzak
Reflector



4" RECESSED HOUSING

ODT1-452G

Round 4" MR16 50W Max. Voltage Gimbal Light Trims

■ To be used in low and line voltage application

■ Painted finish is powder coated for abrasion resistance



4" RECESSED HOUSING

ODT2-451

4" PAR20 50W Max. Recessed Light Trim Mounted With 3 Spring Clips

■ To be used in low and line voltage application

■ Painted finish is powder coated for abrasion resistance



ODT2-451 WH
White Trim
White Baffle



ODT2-451 ORB
Oil Rubbed
Bronze



ODT2-451 SN
Satin Nickel Trim
Satin Nickel Baffle



ODT2-451 BK
Black Trim
Black Baffle



ODT2-451 RBK
Black Trim
Black Baffle



4" RECESSED HOUSING

ODT2-452

4" PAR20 50W Max. Voltage Recessed Light Trim Mounted With Three Spring Clips

■ To be used in low and line voltage application

■ Painted finish is powder coated for abrasion resistance



ODT2-452 HZ
White Trim
Haze Reflector



ODT2-452 CL
White Trim
Clear Alzak Reflector



ODT2-452 CHCL
Chrome Trim
Clear Alzak Reflector



4" RECESSED TRIMS

ODT2-453SG

Round 4" PAR20 35W Max. Voltage Recessed Light Shower Gimbal Trim

■ To be used in low and line voltage application

■ Painted finish is powder coated for abrasion resistance



ODT2-453SG WH
White Trim



ODT2-453SG SN
Satin Nickel
Trim



ODT2-453SG WH
White Trim



4" RECESSED TRIMS

ODT2-452G

Round 4" Gimbal PAR20 50W Max. Voltage Recessed Light Trim

■ To be used in low and line voltage application

■ Painted finish is powder coated for abrasion resistance



ODT2-452G WH
White Trim



ODT2-452G SN
Satin Nickel
Trim



ODT2-452G ORB
Oil Rubbed
Bronze Trim

ODT2-453SG

Round 5" PAR20 35W Max. Watertight Satin Nickel Curved Glass Trim With Ball Lens

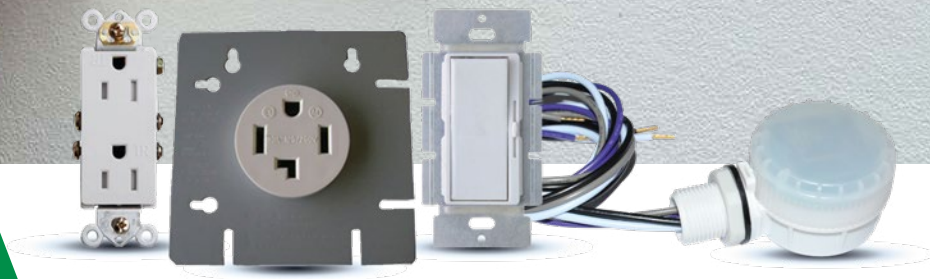


**GET
WIRED,
FOR
SUCCESS**

ORTECH's Wiring Devices offer a comprehensive range of high-quality products, including **receptacles, switches, dimmers, sensors, and timers**. These devices are designed to meet the demands of both residential and commercial installations, providing reliable and efficient power management solutions. With a focus on safety and durability, **ORTECH's** products ensure that your electrical systems run smoothly and securely.

The receptacles and switches are built with user-friendly designs and premium materials, ensuring easy installation and long-lasting performance. ORTECH's dimmers and sensors allow for customizable lighting control, helping you create the perfect ambiance while optimizing energy efficiency.

ORTECH's timers and advanced wiring solutions help automate your electrical systems, offering energy-saving features for both indoor and outdoor applications.



8304TR

15A Decorative Temper Resistant Receptacle

- | | |
|--------------------|---------------|
| ■ Voltage: | 125V AC |
| ■ Amps: | 20A |
| ■ Base/Cover: | Polycarbonate |
| ■ Power Contacts: | Brass |
| ■ Terminal Screws: | Plated Steel |
| ■ Frame: | Polycarbonate |
| ■ Flammability: | UL 94V-2 |
| ■ Operating Temp.: | -40°C~+65°C |

- With self grounding clip

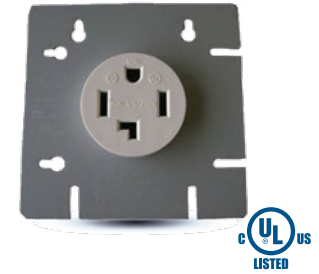


MH15-ST | MH20-ST

15-20 Amps Self-testing Tamper Resistant GFCI Receptacle With Wall Plate

- Voltage: 120V AC
- Amps: 15A | 20A
- Wattage: 1800W | 2400W
- Frequency: 60Hz
- Trip Time: 25ms
- Trip Level: 4-6mA
- Humidity: 95%RH, non-condensing
- Operating Temp.: -35°C~+66°C

■ 2 poles 3 wires grounding duplex receptacle



8330T

30A 4 Wires Dryer Receptacle

- | | |
|--------------------|---------------|
| ■ Voltage: | 125-250V AC |
| ■ Amps: | 30A |
| ■ Base/Cover: | Polycarbonate |
| ■ Power Contacts: | Brass |
| ■ Terminal Screws: | Plated Steel |
| ■ Frame: | Polycarbonate |
| ■ Flammability: | UL 94V-2 |
| ■ Operating Temp.: | -40°C~+65°C |

■ Suitable for copper wires ONLY



8350T

50A 4 Wires Range Receptacle

- Voltage: 125-250V AC
- Amps: 50A
- Base/Cover: Polycarbonate
- Power Contacts: Brass
- Terminal Screws: Plated Steel
- Frame: Polycarbonate
- Flammability: UL 94V-2
- Operating Temp.: -40°C~+65°C

■ Suitable for copper wires ONLY





DMD-LED-3

LED / CFL 150W Dimmable Single Pole Three Way Decorator Dimmer Switch

- Voltage: 0-10V AC
- LED/CFL: 150W dimmable
- Electronic Ballast/ LED: 120V AC 6A
- Incandescent: 277V AC 3A
- Frequency: 60Hz
- Humidity: 95%RH, non-condensing
- Operating Temp.: -0°C~+55°C
- Minimum light level (low-end) shall be adjusted to optimize performance



HET01-R

15A Programmable 7 Day Digital Timer With Daylight Saving Feature

- Output: 120V AC
- Frequency: 60Hz
- Tungsten: 1200W
- Resistive Rating: 1800W 15A
- Motor: 1/4HP
- Operating Temp.: 0°C ~ +55°C
- Built-in memory holds settings indefinitely without power



DWOS

12 Amps Passive Infrared Sensor With Ambient Light Level Sensor

- Capacity Level: 120V AC/60Hz
- Tungsten: 800W
- Ballast: 800VA
- Motor: 1/4HP
- Time Delay: 15 sec ~ 30 min
- Light Level: 30 Lux — Daylight
- Operating Temp.: 0°C ~ +55°C
- Detects difference between heat emitted from human body in motion & background space



HET06-R

Commercial Grade Preset In-wall Countdown Single Pole Timer

- Output: 125V AC
- Frequency: 60Hz
- Tungsten: 1000W
- Humidity: 95%RH, non-condensing
- Motor: 1/2HP
- Time Delay: 5-10-30-60 mins / 2 or 4 hours
- Operating Temp.: 0°C ~ +55°C
- Ideal for closet, pantry, garage, laundry room, outdoor lighting and spa



DMD-ELV

Electronic Low Voltage Dimmer Switch With Single Pole 3 Way Wiring

- Voltage: 120V AC
- Wattage: 300W
- Frequency: 60Hz
- LED/CFL: 150W dimmable
- Humidity: 95%RH, non-condensing
- Operating Temp.: -0°C~+55°C
- Uses standard single pole and three way wiring for easy installation at home



MPC-50V

10 Amps Line Voltage PIR Ceiling Mount Sensor For incandescent, CFL, LED lighting

- Wattage: 800W
- Input: 120-277V AC, 60Hz
- Motor: 1/4HP
- Adjustable Light Level: 10FC to 150FC
- Adjustable Time Delay: 15 sec ~ 30 min
- Coverage: 360°, up to 1200 ft²
- Operating Temp: 0°C ~ +55°C



OD-MC609V RC D

120-347V Waterproof Indoor Use Sensor For Vapour Tights, High Bays And LED Panels

- Wattage: 0.5W Max.(transmitting power) <1.5W (stand-by power)
- DC Input Voltage: N/A
- Rated Voltage: 120V AC / 277V AC / 347V AC, 50/60Hz
- Working Mode Output: On/OFF function, 1-10V step dimming
- Dim Interface: < 50mA (non-constant source) 10% (1.4-1.6V) / 20% (1.9-2.1V) / 30% (2.9-3.1V) / 50% (4.9-5.1V) 5.8 GHz ± 75MHz, ISM Band
- Operating Frequency: 50000 hours
- Lifetime: IP65
- Grade Of Protection: Class II
- Protection Class: Compliant to RoHS
- Environment Requirement: Input STW, 3*18AWG exposed line length: 810-830 mm 1-10V DC: STJW, 2*18AWG exposed line length: 810-830 mm 150° (wall mounting) 360° (ceiling mounting)
- Wiring: DIP switch: 5s / 30s / 1min / 3min / 20min / 30min Remote control: 5s / 30s / 1min / 3min / 5min / 10min / 20min / 30min
- Detection Angle: 150° (wall mounting) 360° (ceiling mounting)
- Hold Time: DIP switch: 5s / 30s / 1min / 3min / 20min / 30min Remote control: 5s / 30s / 1min / 3min / 5min / 10min / 20min / 30min and so forth
- Stand-by Dim Level: DIP switch & Remote control: 10% / 20% / 30% / 50%
- Stan-by Period: DIP switch: 0s / 1min / 3min / 10min / 30min and so forth Remote control: 0s / 10s / 1min / 3min / 5min / 10min / 30min and so forth
- Detection Area: DIP switch: 100% / 50%
- Daylight Sensor: Remote control: 25% / 50% / 75% / 100%
- Detection Radius: DIP switch & Remote control: 5lux / 15lux / 30lux / 50lux / 100lux / 150lux / Disable (ambient light diffusion)
- Operating Temp.: 5-8m (mounting height 8m, maximum mounting height 15m) -35°C ~ +55°C
- Mounting height is maximum 15m
- Has patented microwave antenna
- Functions with remote controller MH01, and is easy to adjust sensor parameters
- Works with 1-10V dimmable LED driver and easy to achieve 2-step or 3-step dimming function



OD-MC628VRC

LED High Bay Sensor That Supports High And Low Sensitivity Modes

- Wattage: 0.5mW Maximum (transmitting power), <1W (stand-by power)
- DC Input Voltage: N/A
- Rated Voltage: 120-277V
- Working Mode Output: 0-10V dimming
- Dim Interface: 0-10V dimming, < 50mA (non-constant source) 5.8 GHz ± 75MHz, ISM Band
- Operating Frequency: 50000 hours
- Lifetime: IP65
- Grade Of Protection: Class II
- Protection Class: Compliant to RoHS
- Environment Requirement: UL1015, 2*18AWG exposed line length 810 mm / UL1015, 2*22AWG exposed line length 810 mm 150° (wall mounting) 360° (ceiling mounting)
- Wiring: DIP switch: 5s/30s/1min/3min/5min/10min/20min/30min Remote control: 10% (1.4-1.6V) / 20% (1.9-2.1V) / 30% (2.9-3.1V) / 50% (4.9-5.1V) 0s/10s/1min/3min/5min/10min/20min/30min and so forth
- Detection Angle: 150° (wall mounting) 360° (ceiling mounting)
- Hold Time: DIP switch: 5s/30s/1min/3min/5min/10min/20min/30min Remote control: 5s/30s/1min/3min/5min/10min/20min/30min and so forth
- Stand-by Dim Level: DIP switch & Remote control: 10% / 20% / 30% / 50%
- Stan-by Period: DIP switch: 0s / 1min / 3min / 10min / 30min and so forth Remote control: 0s / 10s / 1min / 3min / 5min / 10min / 30min and so forth
- Detection Area: DIP switch: 100% / 50%
- Daylight Sensor: Remote control: 25% / 50% / 75% / 100%
- Detection Radius: DIP switch & Remote control: 5lux / 15lux / 30lux / 50lux / 100lux / 150lux / Disable (ambient light diffusion)
- Operating Temp.: 5-8m (mounting height 8m, maximum mounting height 15m) -35°C ~ +55°C
- Mounting height is maximum 15m
- Has patented microwave antenna
- Functions with remote controller MH01, and is easy to adjust sensor parameters
- Works with 1-10V dimmable LED driver and easy to achieve 2-step or 3-step dimming function



WM-DHOS

Single Pole Humidity / PIR Motion Sensor

- Output: 120V AC
- Frequency: 60Hz
- Humidity: 45%-80% RH
- Motor: 1/4HP
- Time Delay: 15 secs / 5-15-30 mins
- Operating Temp.: 0°C ~ +55°C
- Compatible with incandescent, fluorescent, halogen, and LED Lighting

SET IT AND FORGET IT
EFFORTLESS
TIMING FOR YOUR
ELECTRICAL
NEEDS



UFOHB-SENSOR

Mini Microwave Sensor Specifically Eligible For UFOHBS-200W

- Wattage: 1mW Max.(Transmitting Power) < 0.3W(Stand-by Power)
- Input: 12-24V DC ± 1V
- Working Output: 0-10V DC
- Dim Interface: 1-10V Dimming <50mA(Non-constant source) 5.8GHz ± 75 MHz, ISM Band
- Operating Frequency: IP65
- Grade Of Protection: Class II
- Detection Radius: 5-7m
- Operating Temp: -35°C ~ +55°C

Compatible LED High Bays: UFOHBS-100W | UFOHBS-150W(sold separately)

REMOTE-MH10

Compatible Remote Control (sold separately)



***DING
DONG,
WELCOME
HOME!***

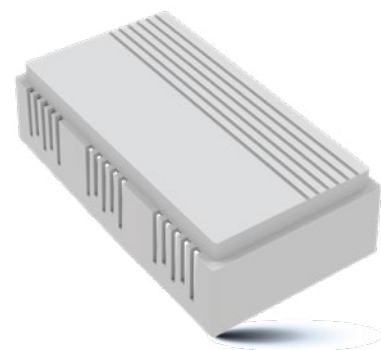
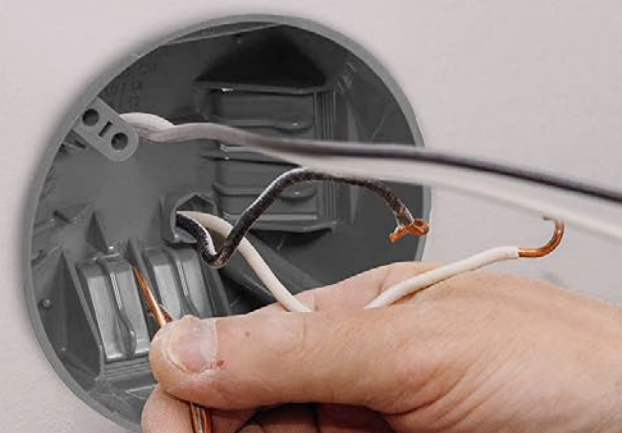
ORTECH's Wired Door Chimes provide a reliable, stylish way to announce visitors with clear and pleasant tones. Designed for easy installation, these door chimes seamlessly integrate with your home's wiring to deliver dependable, consistent performance.

ORTECH Door Chimes are an excellent choice for both modern and traditional homes. Make welcoming guests a pleasant experience, combining functionality with a touch of elegance.



**POWER
UP
YOUR
PROJECTS**

ORTECH offers a comprehensive range of **essential electrical components**, including connectors, lamp holders, vapor barriers, plates, cords, and NMD90 staples, each crafted to meet high performance and safety standards. Built to last, these components enhance the quality and safety of any project, making **ORTECH** the go-to choice for dependable electrical supplies.

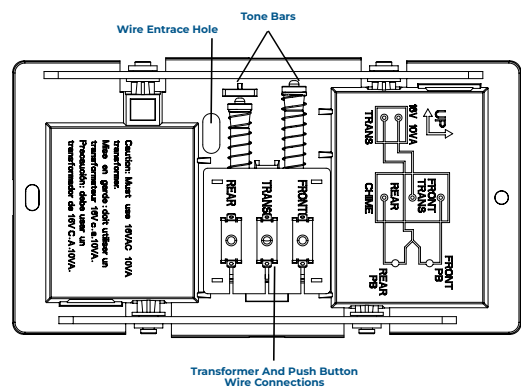


2 CHIME SOUNDS
MAX 85DB FRONT DOOR TUNE,
MAX 80DB BACK DOOR TUNE

OD-DRBL-A

Wired Door Chime Kit w/2 Lit Up Push Buttons

- | | |
|---------------------|---|
| ■ Working Voltage: | Transformer
Output: 120VAC
(60Hz)
Transformer Input:
16VAC, 10VA |
| ■ Working Current: | <200mA |
| ■ Stand-by Current: | Wired bell push
button (with light):
<60mA
Wired bell push
button (without
light): <50mA |
| ■ Operating Temp.: | -20°C~+55°C |

**PACKAGE CONTAINS**

- 1 x Transformer
- 1 x Chime
- 2 x Wired Bell (lit-up) Push Buttons
- 10 x Mounting Screws
- 2 x Anchors
- 1 x User Manual

COLOUR OPTIONS

- OD-DRBL-A-WH (White)
- OD-DRBL-A-BK (Black)

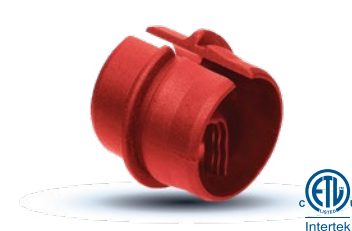


1/2IN CONN

1/2" Polymeric Resin Loomex Connector For Connecting NMD90 Loomex Cable

- Trade Size: 1/2" (13mm)
- NM Wire size: 10/3-14/3 AWG
12/2 AWG
- Grade Of Protection: IP20
- Application: For metal junction
box knock-out
hole

- **Terminale non-metallic sheathed cable and suitable for a dry location box or enclosure**



3/4IN CONN

Red 3/4" PVC (polymerizing vinyl chloride)
Connector

- Trade Size: **3/4" (19mm)**
- NM Wire size: **6/3 AWG**
- Grade Of Protection: **IP20**
- Application: **For metal junction box knock-out hole**

- **Terminale non-metallic sheathed cable and suitable for a dry location box or enclosure**



JDZ001

Plastic Keyless Lamp Holder

- Wattage: **660W**
- Voltage: **250V AC**
- No. Of Terminal Screw: **Two**
- Light Bulb: **E19 medium base**

- For mounting on 3-1/4" or 4" octagon outlet box



JDZ003

Plastic Pull Chain Ceiling Lamp Holder

- Wattage: **660W**
- Voltage: **250V AC**
- No. Of Terminal Screw: **Two**
- Light Bulb: **E19 medium base**

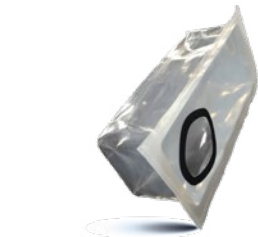
- For mounting on 3-1/4" or 4" octagon outlet box

**LVT-CONN-100**

100pc Pack Of Low Voltage Connectors For Landscape Lighting

- Ideal for both small-scale and large-scale installations
- Perfect match for 12 and 16 gauge wire of low voltage landscape lighting
- Constructed with high-quality materials to withstand outdoor conditions
- Grade of Protection: IP20

- MISCELLANEOUS 30



VB-S4

- Commercial/Residential Grade Vapour Barrier For 4" LED Lighting
- Material: Heavy duty polyethylene
 - Temperature Rating: +90°C
 - Target: Installations with 16" or 14" beam centres
 - Application: For 4" LED lighting
 - Prevents airflow between living spaces & unconditioned areas



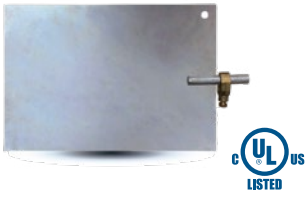
VB-S6

- Commercial/Residential Grade Vapour Barrier For 6" LED Lighting
- Material: Heavy duty polyethylene
 - Temperature Rating: +90°C
 - Target: Installations with 16" or 14" beam centres
 - Application: For 6" LED lighting
 - Controls moisture in areas such as basements, ceilings, crawl spaces, floors, walls



8800-CL

- Black Specialty Plate With Clear Cover, Gasket, Mounting Hardware
- One gang weatherproof cover and base
 - Can be used outdoors or in other wet locations
 - Impact resistant, UV stabilized, non-conductive
 - Gasket with slits for mounting screws
 - Meets extra duty requirements for any application
 - Baggie assembly with mounting hardware



Ground Plate

- High Quality Galvanized Steel Plate Used For Grounding
- Major time & cost savings vs. ground rods
 - Wire size: 8 AWG to 2/0
 - Includes a 5/8 in. bronze ground connector/clamp when purchased
 - 5.8 mm thickness



CORD24

- 24" 2-Pin Extension Cord For ORTECH Slim Lights
- COMPATIBLE ITEMS
- ALL SINGLE CCT SLIM LIGHTS
 - SLIM-RG2-5CCT
 - SLIM-RG4-5CCT
 - SLIM4DGR-5CCT
 - SLIM4DGF-5CCT
 - SLIM-TL2-5CCT



CORD-B24

- 24" 3-Pin(B-Style) Extension Cord For ORTECH Slim Lights
- COMPATIBLE ITEMS
- SLIM3GIM-5CCT
 - SLIM-RG3-5CCT
 - SLIM4GIM-5CCT
 - SLIM3CONT-3CCT
 - SLIM4FR-5CCT
 - SLIM6FR-5CCT
 - SLIM4FL+FR-5CCT
 - SLIM6FL+FR-5CCT
 - SLIM4-ECON



CORD-B120

- 240" 3-Pin(B-Style) Extension Cord For ORTECH Slim Lights
- COMPATIBLE ITEMS
- SLIM3GIM-5CCT
 - SLIM-RG3-5CCT
 - SLIM4GIM-5CCT
 - SLIM3CONT-3CCT
 - SLIM4FR-5CCT
 - SLIM6FR-5CCT
 - SLIM4FL+FR-5CCT
 - SLIM6FL+FR-5CCT
 - SLIM4-ECON



CORD-FT6-24

- 24" 3-Pin Plenum Rated with FT6 Cables Extension Cord For ORTECH Slim Lights
- COMPATIBLE ITEMS
- SLIM3-5CCT
 - SLIM4-5CCT
 - SLIM4CONT-5CCT
 - SLIM6-5CCT



CORD-FT6-120

- 240" 3-Pin Plenum Rated with FT6 Cables Extension Cord For ORTECH Slim Lights
- COMPATIBLE ITEMS
- SLIM3-5CCT
 - SLIM4-5CCT
 - SLIM4CONT-5CCT
 - SLIM6-5CCT



CORD60

- 60" 2-Pin Extension Cord For ORTECH Slim Lights
- COMPATIBLE ITEMS
- ALL SINGLE CCT SLIM LIGHTS
 - SLIM-RG2-5CCT
 - SLIM-RG4-5CCT
 - SLIM4DGR-5CCT
 - SLIM4DGF-5CCT
 - SLIM-TL2-5CCT



CORD120

- 120" 2-Pin Extension Cord For ORTECH Slim Lights
- COMPATIBLE ITEMS
- ALL SINGLE CCT SLIM LIGHTS
 - SLIM-RG2-5CCT
 - SLIM-RG4-5CCT
 - SLIM4DGR-5CCT
 - SLIM4DGF-5CCT
 - SLIM-TL2-5CCT



CORD240

- 240" 2-Pin Extension Cord For ORTECH Slim Lights
- COMPATIBLE ITEMS
- ALL SINGLE CCT SLIM LIGHTS
 - SLIM-RG2-5CCT
 - SLIM-RG4-5CCT
 - SLIM4DGR-5CCT
 - SLIM4DGF-5CCT
 - SLIM-TL2-5CCT



CORD-A24

- 24" 3-Pin(A-Style) Extension Cord For ORTECH Slim Lights
- COMPATIBLE ITEMS
- SLIM4CONT-5CCT
 - SLIM4-5CCT



CORD-A120

- 120" 3-Pin(A-Style) Extension Cord For ORTECH Slim Lights
- COMPATIBLE ITEMS
- SLIM4CONT-5CCT
 - SLIM4-5CCT



ST01

- 12/2 NMD90 Staple For Non-metallic Sheathed Cable Sizes 14/2
- Applicable Cables: 12/2, 14/2



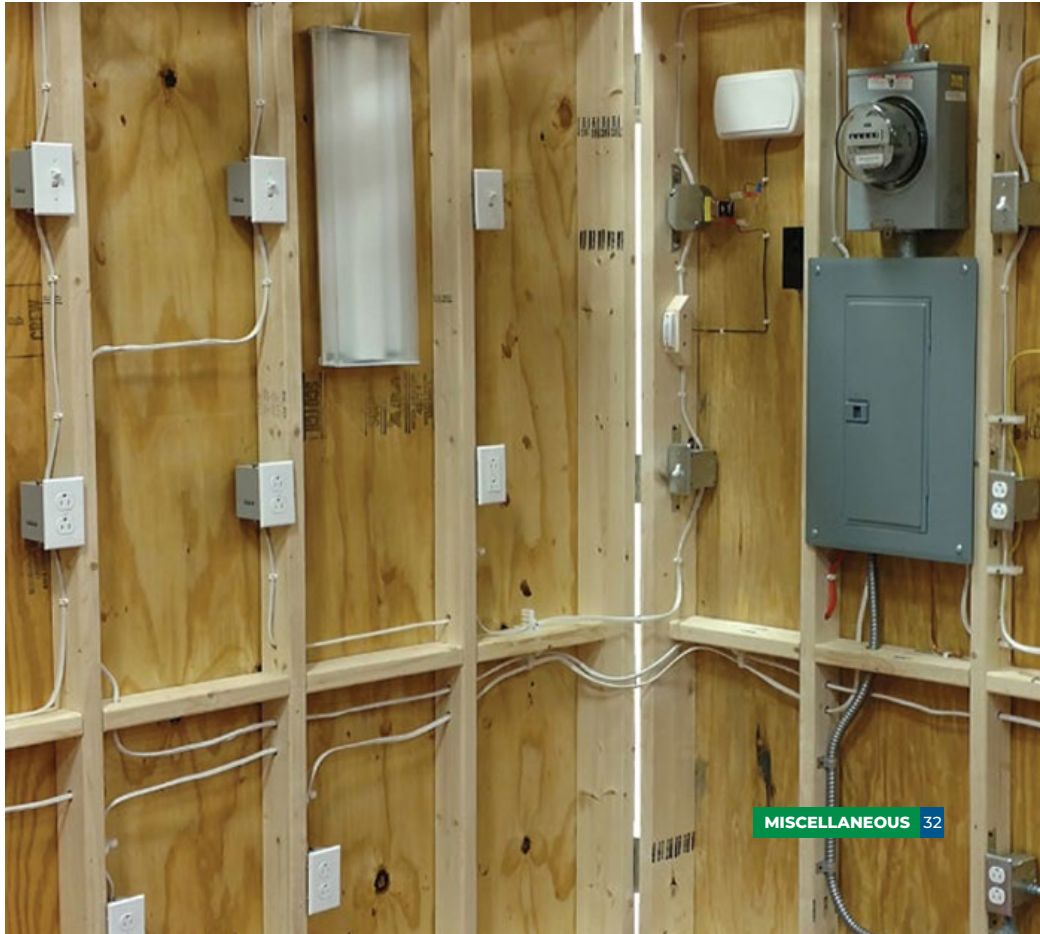
ST02

- NMD90 Staple For Non-metallic Sheathed Cable In Various Sizes
- Applicable Cables: 14/2, 12/2, 10/2, 12/3, 10/3



ST03

- NMD90 Staple For Non-metallic Sheathed Cable Sizes 10/3, 8/2
- Applicable Cables: 10/3, 8/2



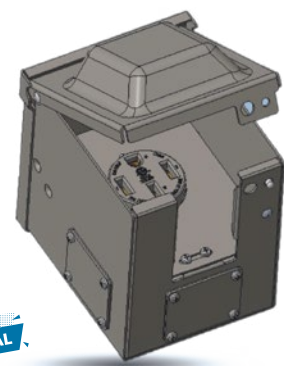
POWER YOUR ELECTRIC JOURNEY

The **ORTECH EV Series** Charger Plugs are innovative, high-performance charging solutions designed for electric vehicles. Built to meet North American standards, these durable and energy-efficient plugs ensure fast, reliable charging at home or on the go. Featuring sleek, compact designs and user-friendly interfaces, they offer seamless compatibility with most EV models, prioritizing safety and convenience.



CUT THE POWER, NOT THE FUN

The **ORTECH NEMA 3R A/C Disconnect** is a durable, weather-resistant switch designed for safely cutting power to an air conditioning unit during maintenance or emergencies. Engineered for outdoor use, it provides reliable protection against rain, snow, and other environmental factors. **ORTECH's A/C disconnect** delivers long-lasting performance and peace of mind.



NEW
ARRIVAL

5YR WARRANTY



EV-14-50-R

NEMA Type 14-50R, 50A 125/250V in Metal Enclosure

- Product Size 17.5 x 13.5 x 15.5 cm
- Operating Ambient -20°C ~ +85°C
- Storage -20°C ~ +60°C
- Environment
- Case Quantities 6

PACKAGE CONTAINS

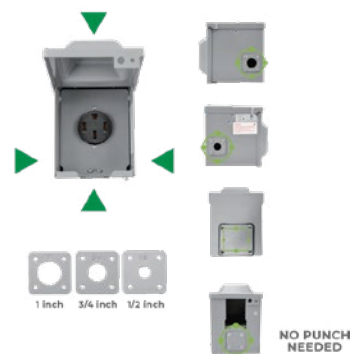
- 1 x Metal Box (Q195, T=1.6mm. Powder painting Coating)
- 1 x Outlet (NEMA Type 14-50R, 50A 125/250V)
- 1 x Parts Package

HIGHLIGHTS

- Suitable for copper wires ONLY
- 4 pre-drilled holes to suit installation in any direction
- Metal spring lock button to secure the outlet box cover in place
- Anti-Theft - blank holes allow installation of pad lock for enhanced security
- Packaging includes 3 covers with different sized holes (1/2", 3/4" and 1"), allowing you to choose from various thread sizes



MULTIPLE POWER CABLE SOURCE



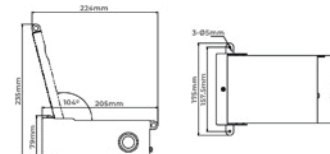
NEW
ARRIVAL



AC-DC-60AMP

NEMA 3R A/C disconnect, a weather-resistant switch for safely cutting power to an AC unit

- Rated Current 60A
- Rated Voltage 240V
- Phase 1P
- No. of Fuses None
- No. of Wires 2 Wires
- Case Quantities 12

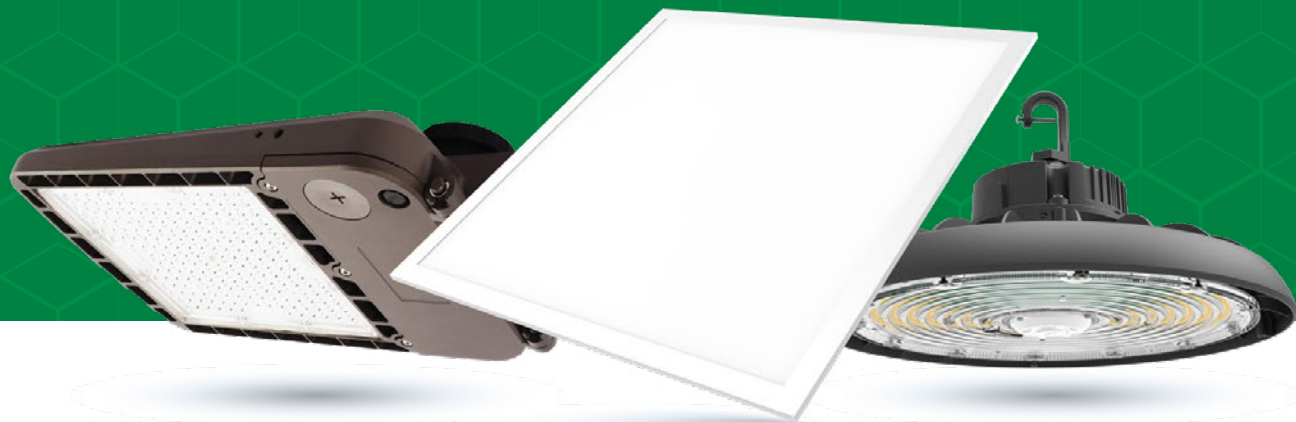


HIGHLIGHTS

- The purpose of the A/C disconnect is to offer a viable solution to prevent unauthorized personnel from harming themselves by tampering with the A/C (air conditioning) system circuit
- Cover and enclosure of disconnect switch feature convenient holes to apply traditional pad locks, making the fixture tamper proof
- NEMA 3R weatherproof rating ensures this unit is safe to install outdoors through every season



WE QUALIFY FOR PROVINCIAL COMMERCIAL LIGHTING REBATES



ELIGIBLE PROGRAMS

BC Hydro | Fortis BC | Efficiency Manitoba - Business Lighting Program | Save On Energy - Retrofit Program (Ontario)
Quebec Efficient Solutions Program | Newfoundland Takecharge Businesss Program



CURRENT PRODUCT CATEGORIES OFFERING REBATES

Area Lights | Linear Strip Lights | Panel Lights | UFO High Bays | Vapour Tights | Wrap Around Lights | Wall Packs

**STAY TUNED
FOR REGULAR UPDATES
TO THIS LIST!**



JOIN OUR COMMUNITY!

Visit our YouTube channel, subscribe, and be the first to see our latest tips and insights



ENGAGE WITH US ON YOUR FAVORITE SOCIAL NETWORKS

INSTAGRAM

@ ortechnidustries



FACEBOOK

@ ortechnidustries



LINKEDIN

@ ortechnidustries



OUR COMMITMENT

To be the trusted leader in delivering innovative and certified lighting, electrical, and HVAC solutions across diverse markets.

THE MORE YOU SHOP, THE MORE YOU SAVE!
LOYAL CUSTOMERS ENJOY GROWING DISCOUNTS.

CONTACT OUR TEAM FOR MORE INFO AT: [INFO@ORTECHINDUSTRIES.COM](mailto:info@ortechindustries.com)

THOUGHTS & TAKEAWAYS

Use this space to capture your thoughts, ideas, or reminders as you explore our catalogue.
Note down anything that inspires or stands out to you along the way!

CONTACT OUR TEAM FOR MORE INFO AT: INFO@ORTECHINDUSTRIES.COM

THOUGHTS & TAKEAWAYS

Use this space to capture your thoughts, ideas, or reminders as you explore our catalogue.
Note down anything that inspires or stands out to you along the way!

CONTACT OUR TEAM FOR MORE INFO AT: INFO@ORTECHINDUSTRIES.COM

BRITISH COLUMBIA

13376 Comber Way, Surrey, BC
V3W 5V9

ONTARIO

205 Summerlea Rd, Brampton, ON
L6T 4E5

GET IN TOUCH

info@ortechindustries.com

LED LIGHTING | HVAC SOLUTIONS | ELECTRICAL SUPPLIES

ORTTECHINDUSTRIES.CA

