

Delivering the Power of
POSSIBILITIES

ARCHITECTURAL
WALL PANELS

**National
Brands**
Full Line Catalog



Building a Better Human Environment

NICHHA CORPORATION



WE'RE LOOKING FORWARD.

At Nichiha, we think the future is bright.

Your projects come in all shapes, styles and markets. That's why Nichiha is dedicated to helping you build the perfect structure for you, clad in our Architectural Wall Panels.

We combine the aesthetic of your favorite building material with the uncompromising durability of fiber cement, giving you the look you want in considerably less time and for a fraction of the cost. Our expansive collection of textures includes metal, wood, block, stone and brick options in a full range of colors and finishes. Once you've used a Nichiha product, you'll see the difference — and want to use it again and again.

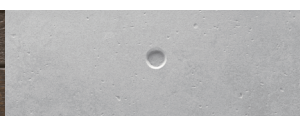
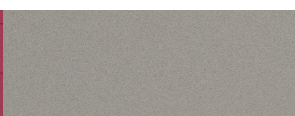
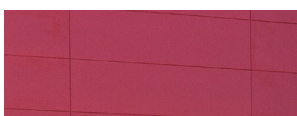
6 | COOL SERIES

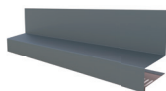
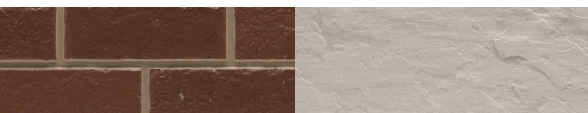
8 | MODERN SERIES

10 | DIMENSION SERIES

12 | WOOD SERIES

14 | CONCRETE SERIES







MULTIPLE LOOKS. ONE SOURCE.

Less time managing, more time imagining.

Why settle for one look when you can get multiple textures and finishes from a single source? With Nichiha Architectural Wall Panels, you can mix and match cladding styles to achieve the varied look you've been searching for. Whether you're looking for metal, stone, wood, concrete or brick, we have it all. Plus, you can say goodbye to higher labor costs, as all of our panel styles operate on the same clip installation system — meaning you only need to hire a single type of crew. You'll be able to move from conception to completion with ease, all while saving time and money.



VINTAGEWOOD



VINTAGEWOOD



RIBBED | VINTAGEWOOD



USEFUL TIP

Add the finishing touches to your next project with our Essential Flashing System on page 22.

Sleek. Bold. Vibrant.

THE COOL SERIES



Get sophistication in your color.

Modern appeal. High performance. Cost-effective. COOL, featuring MEMORIA and ILMLO, is ideal for contemporary design projects. With its satin finish, ease of installation provides significantly more value than traditional aluminum composite and phenolic panels.

COOL series stimulate infinite creativity, create the one and only "Beauty". Memoria — The wall makes an impression on people's "Memory".

You can choose the preferred colors of ,MEMORIA, freely among 20 colors line-up and special colors by full order to coordinate your original designs.

Creating impressive walls by your unique idea remain in mind of creators and spectators.



MEMORIA



EFM201□X



EFM202□X



EFM203□X



EFM204□X



EFM205□X



ETM301□X



EFM301□X



EFM302□X



EFM303□X



EFM304□X



EFM305□X



EFM306□X



EDM307□X



EFM308□X



EFM319□X



EFM310□X



EFM315□X



EDM316□X



EDM317□X



EDM318□X

MEMORIA SPECS

EX SERIES 1820

DIMENSIONS (ACTUAL mm)	455mm x 1820mm
THICKNESS (ACTUAL mm)	16mm
WEIGHT (LBS. PER PANEL)	17kg/piece
WEIGHT (LBS. PER m ²)	20.5kg/m ²
EXPOSED COVERAGE (m ² PER PANEL)	0.828m ²
PACKAGING (PIECES PER PACK)	2 [1.656m ²]

Find form and function in THE MODERN SERIES



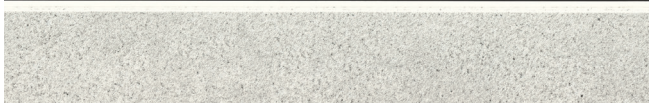
Take modern to the next level with the power of fiber cement.

The clean, modular look of the Nichiha Modern Series is a versatile choice for commercial projects. The stylish tones and subtle seams are the perfect partner for gleaming glass and stainless steel. If you're looking for a modern contrast, the cool hues glow when paired with the warmth of wood. This series offers two distinct textures to ensure you find the perfect fit.

ILMIO is built to last with strong construction that stands up to everyday wear and tear, making it the perfect panel for high-traffic areas. Whichever panel you choose, you've picked one that packs a punch while saving you time and money in the long run.

ILMIO — The wall design stands out the satin finish and feels solid. You can choose a chic color combination, can combine various colors.

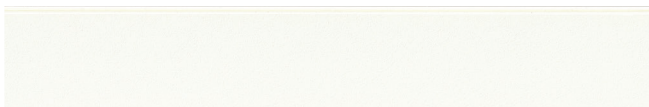
ILMIO



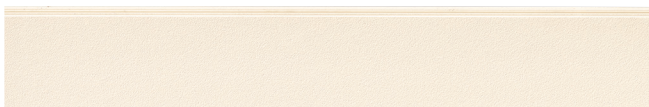
EJM501□X



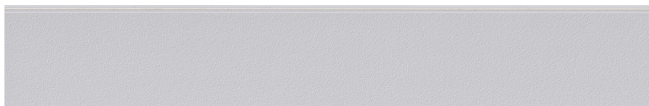
EJM502□X



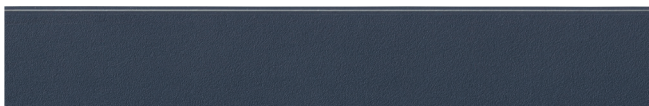
EFM501□X



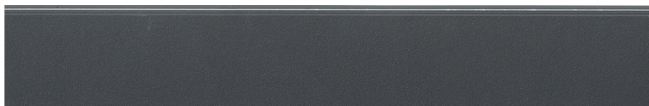
EFM502□X



EFM503□X



EDM504□X



EDM505□X

ILMIO SPECS

EX SERIES 1820

DIMENSIONS (ACTUAL mm)	455mm x 1820mm
THICKNESS (ACTUAL mm)	16mm
WEIGHT (LBS. PER PANEL)	17kg/piece
WEIGHT (LBS. PER m ²)	20.5kg/m ²
EXPOSED COVERAGE (m ² PER PANEL)	0.828m ²
PACKAGING (PIECES PER PACK)	2 [1.656m ²]



VINTAGEWOOD

Create depth and intrigue with
THE DIMENSION SERIES



Color. Texture. Depth. It's Design Complexity Made Simple.

Don't settle for a single, flat look when the Dimension series lets you add depth, texture and color to your designs. Our multi-dimensional Ribbed™ panels bring visual interest to smooth surfaces, like glass or metal, with recessed reveals and striking shadow lines. An additional element, like color, is the perfect way to add another layer of depth and intrigue. Ideal for exterior or interior feature walls, the Dimension series gives you the design flexibility you desire to bring walls to life.

RIBBED



EPS231 □X



EPS2312 □X



EPS2313 □X

RIBBED SPECS

EX SERIES 3030

DIMENSIONS (ACTUAL mm) 455mm x 3030mm

THICKNESS (ACTUAL mm) 16mm

WEIGHT (LBS. PER PANEL) 26kg/piece

WEIGHT (LBS. PER m²) 18.8kg/m²

EXPOSED COVERAGE (m² PER PANEL) 1.378m²

PACKAGING (PIECES PER PACK) 2 [2.757m²]



NOTE: CAN BE INSTALLED HORIZONTALLY OR VERTICALLY.

NOTE: THERE ARE 9 RIBS PER PANEL.



Warm up your project with THE WOOD SERIES



Get the natural look of wood with the unmatched durability of fiber cement.

Nichiha provides the look of wood without the drawbacks of natural wood cladding. Built to last, our VintageWood™ and Casting Wood panels offer the rich textures of wood while providing color stability and withstanding extreme weather elements. VintageWood exudes modern refinement and works well in both modern and vintage designs. With its earthy appeal, Casting Wood adds rustic sophistication to all types of projects. Both products pair perfectly with glass, metal and block panels, adding a touch of warmth to the coolness of these materials.

VintageWood and Casting Wood are as versatile as they are durable. Our Wood Series panels can install both vertically and horizontally and can be used in interior and exterior settings. Hidden fasteners provide a clean and beautiful look.

Creating the perfect match, Nichiha gives you the beauty of wood backed by the brawn of fiber cement.

VINTAGEWOOD



EPC762□X



EPC764□X



EPC763□X

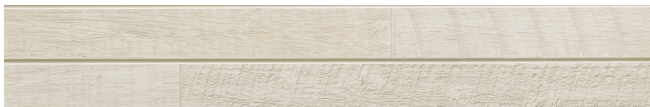


EPC765□X

CASTING WOOD



EPC241□X



EPC245□X



EPC249□X



EPC2411□X



EPC248□X



EPC243□X



EPC247□X



EPC2410□X



EPC246□X

VINTAGEWOOD SPECS

EX SERIES 3030

DIMENSIONS (ACTUAL mm)	455mm x 3030mm
THICKNESS (ACTUAL mm)	16mm
WEIGHT (LBS. PER PANEL)	26kg/piece
WEIGHT (LBS. PER m ²)	18.8kg/m ²
EXPOSED COVERAGE (m ² PER PANEL)	1.378m ²
PACKAGING (PIECES PER PACK)	2 [2.757m ²]

 CAN BE INSTALLED HORIZONTALLY OR VERTICALLY.

CASTING WOOD SPECS

EX SERIES 3030

DIMENSIONS (ACTUAL mm)	455mm x 3030mm
THICKNESS (ACTUAL mm)	16mm
WEIGHT (LBS. PER PANEL)	26kg/piece
WEIGHT (LBS. PER m ²)	18.8kg/m ²
EXPOSED COVERAGE (m ² PER PANEL)	1.378m ²
PACKAGING (PIECES PER PACK)	2 [2.757m ²]

 CAN BE INSTALLED HORIZONTALLY OR VERTICALLY.

Find imperfect perfection with THE CONCRETE SERIES



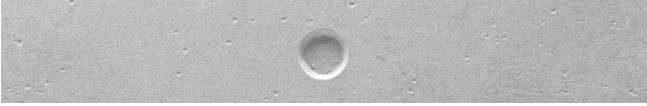
Put a fresh face on industrial chic with fiber cement.

Take back your time with the Nichiha Concrete Series. Designed to mimic the natural texture of concrete, our two panels offer distinct textures and styles to fit your creative vision. Plus, with the power of fiber cement, you can enjoy the look and feel of concrete without the curing times, cracking or color inconsistency.

IndustrialBlock™ offers a distressed design with all the irregularities and characteristics of natural concrete. It can pair seamlessly with a wide range of products, whether you are aiming for a modern or vintage vibe. EPC432□X delivers the look and feel of precast concrete block with a modern twist. Perfect for indoor environments as well as exterior cladding, it features a unique dimple that defines the look of industrial chic.

Both sets of lightweight panels can be installed vertically and horizontally, covering each, and have the durability you've come to expect from Nichiha.

EPC432□X



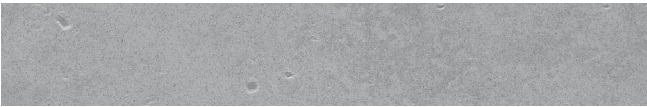
EPC432□X SPECS

EX SERIES 3030

DIMENSIONS (ACTUAL mm)	455mm x 3030mm
THICKNESS (ACTUAL mm)	16mm
WEIGHT (LBS. PER PANEL)	26kg/piece
WEIGHT (LBS. PER m ²)	18.8kg/m ²
EXPOSED COVERAGE (m ² PER PANEL)	1.378m ²
PACKAGING (PIECES PER PACK)	2 [2.757m ²]

 CAN BE INSTALLED HORIZONTALLY OR VERTICALLY.

EPC601□X



EPC601□X SPECS

EX SERIES 3030

DIMENSIONS (ACTUAL mm)	455mm x 3030mm
THICKNESS (ACTUAL mm)	16mm
WEIGHT (LBS. PER PANEL)	26kg/piece
WEIGHT (LBS. PER m ²)	18.8kg/m ²
EXPOSED COVERAGE (m ² PER PANEL)	1.378m ²
PACKAGING (PIECES PER PACK)	2 [2.757m ²]

 CAN BE INSTALLED HORIZONTALLY OR VERTICALLY.



Want the concrete look without the dimples?
Check out our IndustrialBlock panel.



EPC432□X



EPC432□X

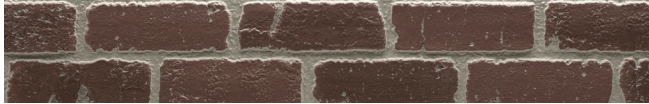
Bring the classic to the present with THE BRICK SERIES



Get a timeless brick finish without the traditional hassle.

The slight variations in color, the stately good looks, the grout lines — it's all there in the Nichiha Brick Series. Thanks to a proprietary multi-layered coating process, the beauty of brick is built to last in these fiber cement panels. With three finishes in four tones, you have the freedom to create the brick building of your choice without the extra cost or hassle. These panels really do have it all; however, we did leave out the tons of weight and the extra time required to see your project to completion. We figured they wouldn't be missed.

VINTAGEBRICK™



EPF451□X



ED452X

PLYMOUTHBRICK™(EPF151□X)



EPF151□X



Get the classic look of kiln-fired brick with the modern strength of PlymouthBrick panels.

CANYONBRICK™



EF2921□X

VINTAGEBRICK™ SPECS

EX SERIES 1818

DIMENSIONS (ACTUAL mm)	455mm x 1818mm
THICKNESS (ACTUAL mm)	18mm
WEIGHT (LBS. PER PANEL)	18kg/piece
WEIGHT (LBS. PER m ²)	21.7kg/m ²
EXPOSED COVERAGE (m ² PER PANEL)	0.829m ²
PACKAGING (PIECES PER PACK)	2 [1.654m ²]

PLYMOUTHBRICK™ SPECS

EX SERIES 1818

DIMENSIONS (ACTUAL mm)	455mm x 1818mm
THICKNESS (ACTUAL mm)	16mm
WEIGHT (LBS. PER PANEL)	16kg/piece
WEIGHT (LBS. PER m ²)	19.3kg/m ²
EXPOSED COVERAGE (m ² PER PANEL)	0.829m ²
PACKAGING (PIECES PER PACK)	2 [1.654m ²]

CANYONBRICK™ SPECS

EX SERIES 1818

DIMENSIONS (ACTUAL mm)	455mm x 1818mm
THICKNESS (ACTUAL mm)	16mm
WEIGHT (LBS. PER PANEL)	16kg/piece
WEIGHT (LBS. PER m ²)	19.3kg/m ²
EXPOSED COVERAGE (m ² PER PANEL)	0.829m ²
PACKAGING (PIECES PER PACK)	2 [1.654m ²]



VINTAGEBRICK



VINTAGEBRICK

Gain rock solid solutions with THE MASONRY SERIES



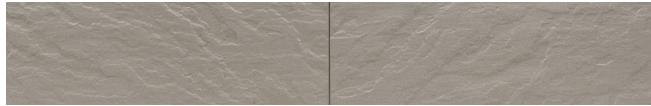
SANDSTONE

Get the beauty of stone for a fraction of the price.

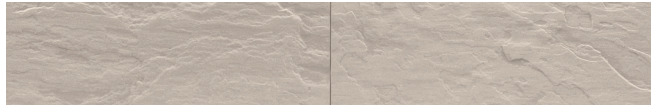
Nichiha's Masonry Series makes grandeur attainable for every situation. Offering two distinct finishes, this series of stone panels is as elegant as it is affordable.

With its subtle color and deep texture, our SandStone™ begs to be touched and examined more closely, Even after seeing it with their eyes and touching it with their hands, your clients will wonder how you ever managed to stay on budget, We call that a trade secret.

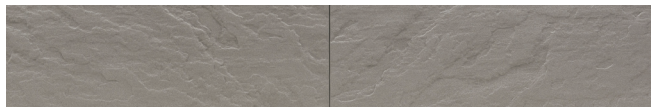
SANDSTONE



ED641X



ED642X



ED644X

SANDSTONE SPECS

EX SERIES 1818

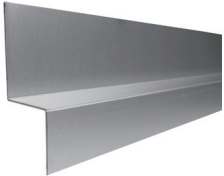

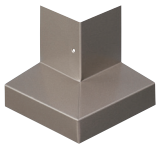
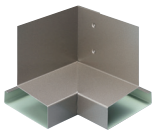

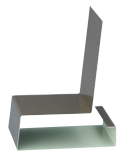
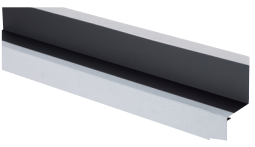



DIMENSIONS (ACTUAL mm)	455mm x 1818mm
THICKNESS (ACTUAL mm)	18mm
WEIGHT (LBS. PER PANEL)	18kg/piece
WEIGHT (LBS. PER m ²)	21.7kg/m ²
EXPOSED COVERAGE (m ² PER PANEL)	0.829m ²
PACKAGING (PIECES PER PACK)	2 [1.654m ²]



THE DETAILS MAKE THE DESIGN.

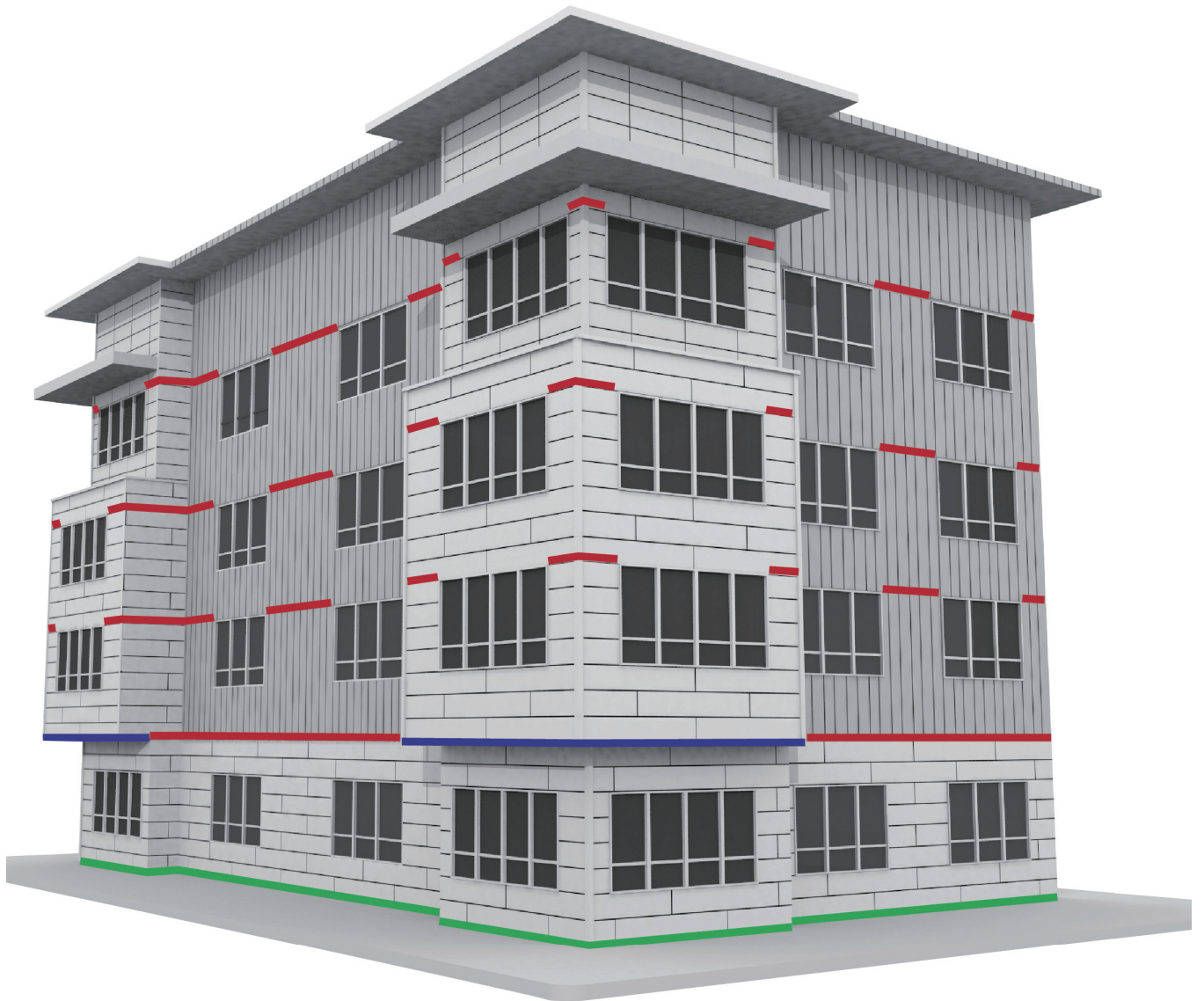
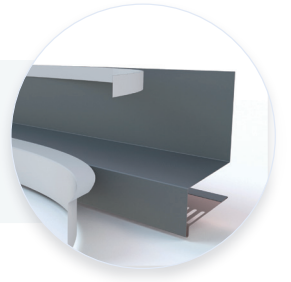
Make your project stand out with our Essential Flashing System.

In architectural design, every detail counts. Our Essential Flashing System is designed to help you remember even the smallest part so you can easily complete your project with the highest level of precision. It includes the Nichiha accessories needed to complete the fiber cement installation system and create a clean, polished look for your building.

									
<p>COMPRESSION JOINT FLASHING</p>									
<table border="0"> <tr> <td>LENGTH</td> <td>3030MM</td> <td colspan="3"></td> </tr> </table>					LENGTH	3030MM			
LENGTH	3030MM								
<hr/>									
									
<p>OVERHANG FLASHING</p>	<p>OVERHANG FLASHING OUTSIDE CORNER</p>	<p>OVERHANG FLASHING INSIDE CORNER</p>	<p>OVERHANG FLASHING ENDCAP</p>	<p>OVERHANG FLASHING CLIP</p>					
<p>JOH725□</p>	<p>JOH725□B</p>	<p>JOH725□D</p>	<p>JOH725□C</p>	<p>JOH725□S</p>					
<hr/>									
									
<p>STARTER FLASHING</p>	<p>STARTER FLASHING OUTSIDE CORNER</p>	<p>STARTER FLASHING INSIDE CORNER</p>	<p>OVERHANG FLASHING ENDCAP</p>						
<p>FTD475□</p>	<p>FTD475□B</p>	<p>FTD475□D</p>	<p>FTD475□C</p>						

NOTE: EACH COMPONENT OF THE ESSENTIAL FLASHING SYSTEM IS SOLD SEPARATELY.

Nichiha takes accessory protection to the next level with a **removable film layer**. Once installed, simply peel off the film to reveal blemish-free fixtures.



Our starter flashing serves a dual role — ensuring your project is polished to perfection and operating as a bug screen to keep annoying pests away.

NEVER FORGET THE LITTLE THINGS AGAIN.

Our installation hardware and accessories easily take your vision from the drawing board to reality.



CLIP

JE 555



LONG CLIP (5')

JEL 560



ULTIMATE HORIZONTAL STARTER TRACK (10')

FA 700



ULTIMATE CLIP II WITH JOINT TAB ATTACHMENT

Compatible with 16mm panels

JEL 778

Compatible with 18 & 21mm panels

JEL 788



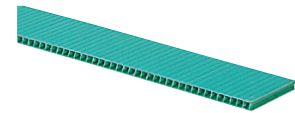
SINGLE FLANGE SEALANT BACKER

FHK 1110R



DOUBLE FLANGE SEALANT BACKER (10')

FH 1010R



SPACER 5,10

FS 1005

FS 1010



TOUCH-UP PAINT



SEALANT



CORNERS

Behind our Architectural Wall Panels is SOME SERIOUS TECHNOLOGY.

EASY INSTALLATION

Time-saving clip installation system that reduces construction time and minimizes mistakes.



NO MORTAR, NO MESS

Prefinished panels eliminate the need for messy mortar or costly masonry-skilled labor.



ANY WEATHER PRODUCT

Products can be installed year round in any climate across the country. No geographical restrictions means more possibilities.



LOW MAINTENANCE

No-fuss products. Little ongoing cleaning or regular maintenance needed. Bring your vision to life and ensure it looks great for years to come.



ENGINEERED FOR PERFORMANCE

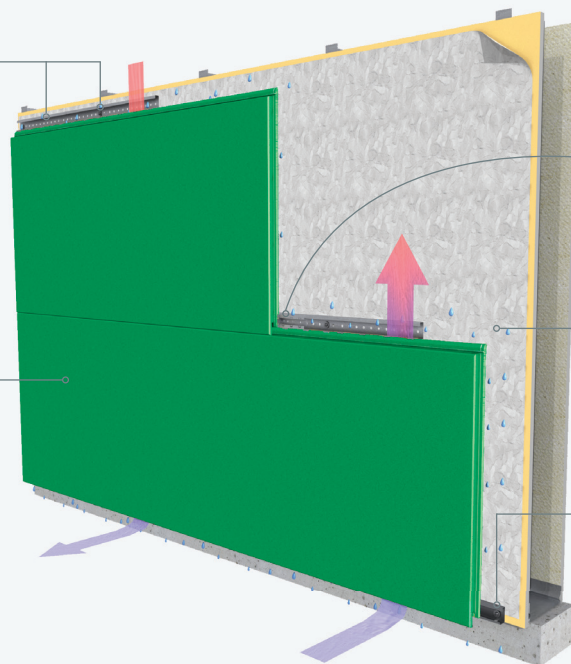
Go beyond our durable panels and discover a meticulously engineered moisture management system that provides a vertical drainage point for air and moisture to exit.

THE ULTIMATE CLIP

creates a hidden fastening system that all but eliminates face fastening. Installation is quick and easy and never requires speciality subcontractors.

NICHIHA ARCHITECTURAL WALL PANELS

are lightweight, easy to handle and available in a virtually endless color palette and a diverse offering of textural finishes.



NICHIHA'S JOINT TAB ATTACHMENT

is designed to support panel lateral stability, helping vertical joints stay tightly closed. The tab fits in place easily and is fastened to the Ultimate Clip with provided screw.

DRAINED AND BACK-VENTILATED RAINSCREEN

design allows water to escape and air to circulate, reducing the risk of mold and water damage inside the building.

THE ULTIMATE STARTER TRACK

pulls double-duty. It ensures a fast, level installation, and its patented drainage channel directs water out and away from the base of the wall.

THE POWER OF POSSIBILITIES AND PARTNERSHIPS

Your creative vision is unique. That's why Nichiha offers you the power of cooperation to help your project move from conception to completion. Our ever-expanding offering of textures and finishes lifts buildings to new and unexpected places, and we want to share them with you. We place a high value on our relationships and are proud to work with our dedicated partners in the world. Join us to discover the power of possibilities and partnerships with Nichiha.

Introduction of web site

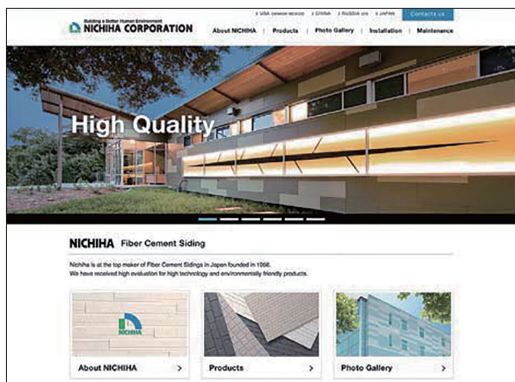
NICHIHA web site (in English), it has more information (products, photo gallery, installation, etc) besides in this catalogue. Please check and see it, too.

Since material handling and installation vary from country to country, For the US, Canada, Mexico, China, Russia and CIS countries and areas, please refer to the information provided by the local web site of NICHIHA.

NICHIHA web site (in English)

There is an information about products, photo gallery, installation, etc.

▶ <http://www.nichiha.co.jp/global/index.html>



NICHIHA web site (in Japanese)

A variety of information about NICHIIHA in Japanese.

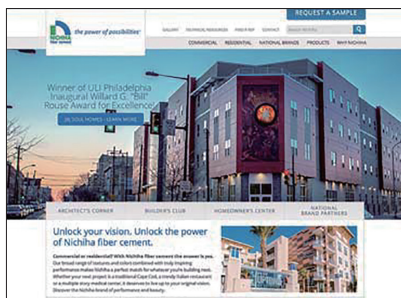
▶ <http://www.nichiha.co.jp>



Web site of an overseas edition for each part

USA CANADA • MEXICO

▶ <http://www.nichiha.com>



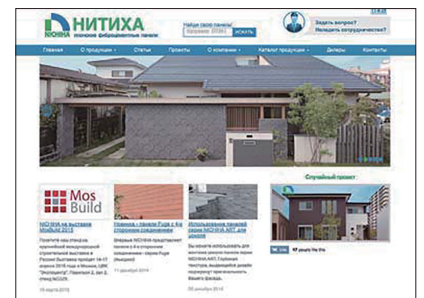
CHINA

▶ <https://www.nichiha.com.cn>



RUSSIA CIS

▶ <http://www.nichiha.ru>



TSUKAMOTO BUILDING 1-6-5 NIHONBASHI HONCHO, CHUO-KU, TOKYO, 103-0023. JAPAN

NOTE: Printed material may not accurately depict actual product color. ©2018 Nichiha USA, Inc. All rights reserved. Printed in the USA. NLC 15K 12.18



KA1910NTAB