

CASE STUDY



LEDVANCE

A CHAMPION PERFORMANCE WITH HCL LIGHTING

BayArena, Leverkusen, Germany

KEY FACTS

FOCUSSING ON THE PLAYERS

BIOLUX HCL luminaires continuously change their light colour to match the natural course of daylight - for greater well-being and performance.

THE BEST LIGHT FOR THE BEST PERFORMANCE

The LED panels, downlights and LED strips impress with high-quality, glare-free light.

ALWAYS IN THE RIGHT MOOD

The light colour and brightness can be manually adjusted to individual requirements using a corresponding control unit. Cold white light promotes concentration before the game, while warm white light ensures relaxation during training breaks, for example.

BIOLUX HCL TW
PANEL DALI



BIOLUX HCL TW
DOWNLIGHT DALI



BIOLUX HCL TW
LED STRIP DALI



THE RIGHT LIGHT AT THE RIGHT TIME - HCL LIGHTS IN PROFESSIONAL FOOTBALL

As sustainability partner of Bayer 04 Leverkusen, LEDVANCE is equipping the team changing room, the gym and the players' corridor with HCL luminaires, which comprehensively promote the performance of the professional footballers with individually selectable lighting profiles that match the natural course of daylight.

THE CHALLENGE

Even the most successful professional footballers have different levels of fitness at different times of the day. All performance-determining factors must therefore be considered, especially at top sporting level - not least the lighting. In football stadiums in particular, important rooms such as the players' dressing rooms are located indoors, where there is usually little daylight.

THE SOLUTION

With this in mind, the reigning German champions Bayer 04 Leverkusen commissioned their long-term sustainability partner LEDVANCE, to equip the team changing room, the gym, the players' corridor and a meeting room in their home BayArena with biologically effective lighting. Human Centric Lighting (HCL) luminaires create an environment that exactly imitates the natural course of daylight - thanks to intelligent control and manually selectable light profiles.

Accordingly, the rooms mentioned were equipped with 36 BIOLUX HCL panel luminaires, 16 BIOLUX HCL downlights and 60 metres of HCL LED strips.

THE ADVANTAGES

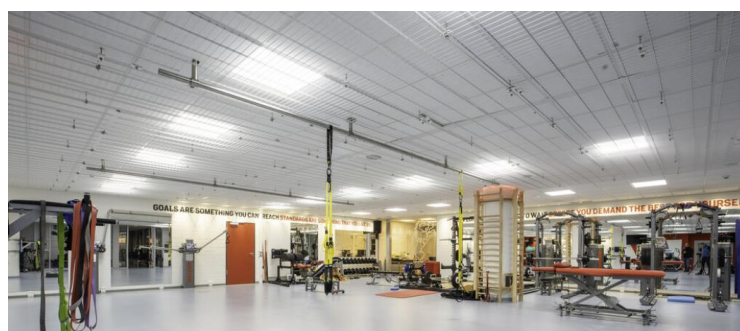
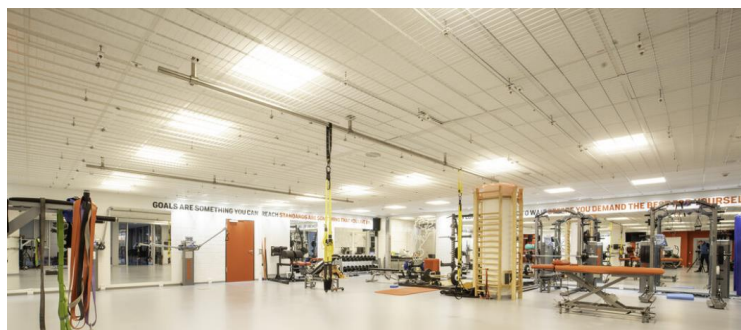
For the professionals at Bayer Leverkusen, the new lighting is a direct hit: BIOLUX HCL luminaires can promote well-being and performance. The LED panels and downlights also impress with the highest quality of light. With a colour rendering of CRI 90 and good glare reduction (UGR<19), they score points across the board. Lighting profiles that can be selected to suit the respective situation ensure a perfect lighting mood at all times: cool white light supports concentration before the game, while warm white light promotes relaxation after games.

LEDVANCE:

'With 'Human Centric Lighting', the focus in the team changing room and gymnastics room of the current German football champions is on the athlete. How do you use the LEDVANCE luminaires to create a supportive atmosphere for the professionals at the right time?'

Dr. Karl-Heinrich Dittmar, Director of Medicine at Bayer 04 Leverkusen:

'It really depends on the situation. In the changing room, for example, warm white light supports recovery after matches or training sessions, while cool white light can create a focussed atmosphere for discussions or promote concentration on the next opponent. We simply switch the light as required, so our team receives optimum support from LEDVANCE HCL luminaires.'



The Bayer 04 Leverkusen Gym: Warm white light to wind down, cool white light to get active.

SUMMARY

For Bayer 04 Leverkusen, LEDVANCE is equipping the team changing room, the gym and the players' corridor of the BayArena with HCL LED strips, downlights and panels that promote the performance and well-being of the professional footballers with optimum lighting quality and manually selectable lighting profiles. Depending on requirements, either a stimulating or relaxing lighting mood is created.