



Beyond the Fold





Where Light Meets Space

THE PANORAMIC DOORS™ DIFFERENCE

Panoramic Doors™ redefines the relationship between architecture and openness through a patented, hingeless system designed for builders and architects who seek to dissolve the boundary between indoors and out. Each precision-engineered panel glides, pivots, and stacks independently, allowing spaces to open with fluidity and intention. Designed and assembled in the USA with premium materials since 2010, every system reflects an uncompromising commitment to quality, performance, and refined simplicity.

A bottom-weighted track system eliminates the need for costly header modifications in most applications, making Panoramic Doors™ ideal for both new construction and transformative renovations. A curated selection of finishes, glass packages, and hardware offers tailored expression across residential and commercial spaces.

Beyond design, Panoramic Doors™ is defined by reliability. From transparent lead times and on-time delivery to post-purchase service that supports each project long after installation, every detail is built for confidence and longevity. More than a door, Panoramic Doors™ is an architectural statement that gives form to light, space, and the desire to build without boundaries.

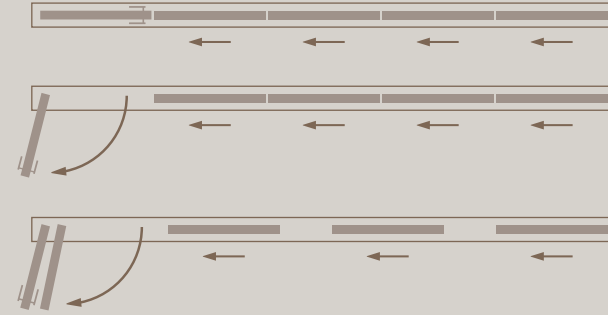
Cover Photo - DL House, Placitas / New Mexico

◀ Highland Cottages at Lake Guntersville, Guntersville, Alabama

HINGELESS INDEPENDENT PANEL TECHNOLOGY

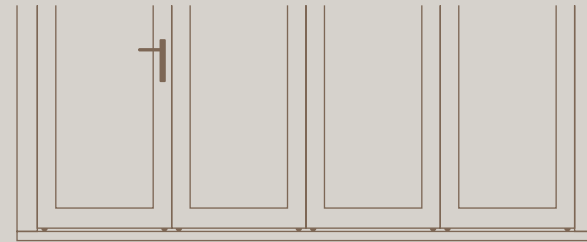
SLIDE-PIVOT-STACK

The Panoramic Doors™ patented Slide-Pivot-Stack system is an engineered wide-opening solution with independent sliding panels and a controlled pivot-and-stack operation. Each panel moves along a bottom-weighted track, pivots at the opening, and stacks to one or both sides to create full clear-width openings without the limitations of traditional bi-fold systems. The result is smooth operation, maximum usable span, and seamless transitions between interior and exterior spaces.



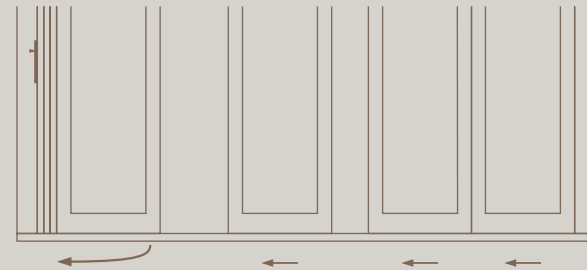
BOTTOM-WEIGHTED TRACK

This proprietary bottom-weighted design transfers the full panel load to the lower track, significantly reducing or eliminating header structural requirements in most applications. The engineered load path simplifies installation, minimizes structural modifications, and enhances long-term operational stability. The result is precise panel alignment, smooth movement, and reliable performance in both new construction and renovation projects.



HINGELESS DESIGN

As a patented, hingeless alternative to traditional bi-fold doors, the system allows each panel to operate independently along a precision bottom track before pivoting and stacking cleanly to one or both sides. This approach enables controlled ventilation, flexible traffic flow, and full clear-width openings without the mechanical limitations of hinged systems, supporting seamless indoor-to-outdoor living.



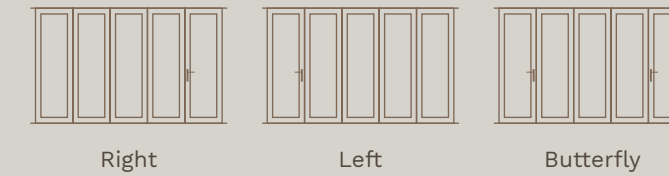


SIGNATURE ALUMINUM DOOR

The Signature Aluminum Series from Panoramic Doors™ is our best-selling, made-to-measure system, built in the USA and approved under the Florida Building Code with DP-50 performance. Its patented, hingeless Slide-Pivot-Stack design delivers superior flexibility over traditional bi-fold systems and comes standard with Solarban 70™ clear glass, with additional options available, making it ideal for seamless open-concept indoor-outdoor living.

DOOR CONFIGURATION

The Signature Aluminum Door offers three main door configurations, left, right, or butterfly, with main doors on both ends of the system.

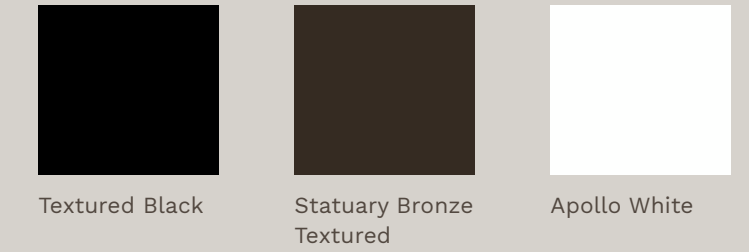


DOOR SPECIFICATIONS

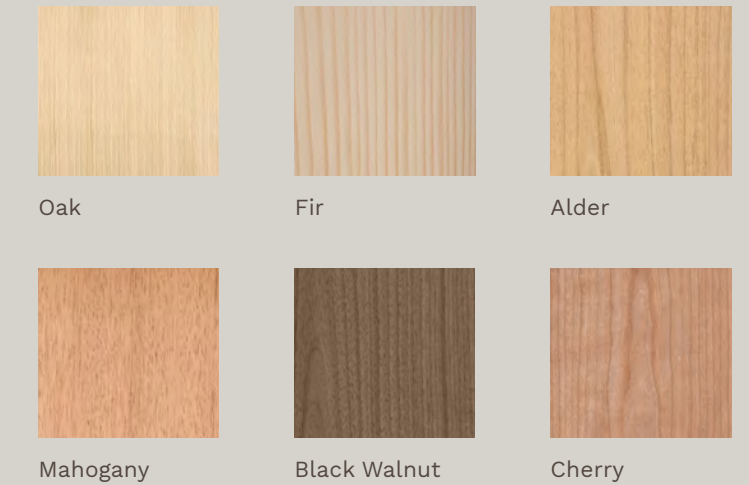
Max System Width	Unlimited
Max System Height	10 ft
Max Panel Width	40 in
Main Door One End	Yes
Main Door Both Ends (Butterfly)	Yes
U-Factor	0.35
Wood U-Factor	0.34
SHGC	0.17 - 0.18
Florida Building Code	FL42251.1

◀ Lightwell House, Chapel Hill, North Carolina, Photo: Scott Pope

STANDARD COLORS



SPECIAL ORDER WOOD OPTIONS



PREMIUM ORDER



200+RAL COLORS



CUSTOM COLORS



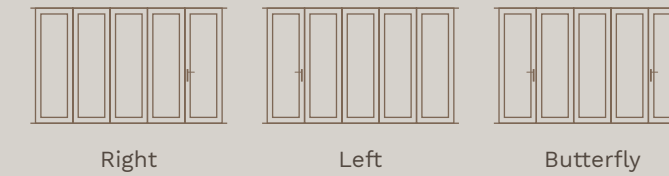


CHAMBERLIN DOOR

Blending modern design with enhanced energy performance, the Chamberlin Series features a foam-insulated aluminum frame for improved thermal efficiency. It is DP 50 rated, California Title 24 compliant, and Florida Building Code approved for reliable performance in demanding environments. A standard LoE™ 366/i89 dual-pane glass package delivers high energy efficiency while maintaining clean, contemporary lines.

DOOR CONFIGURATION

The Chamberlin Series offers three main door configurations, left, right, or butterfly, with main doors on both ends of the system.

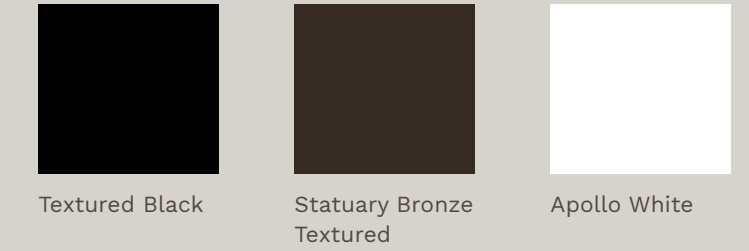


DOOR SPECIFICATIONS

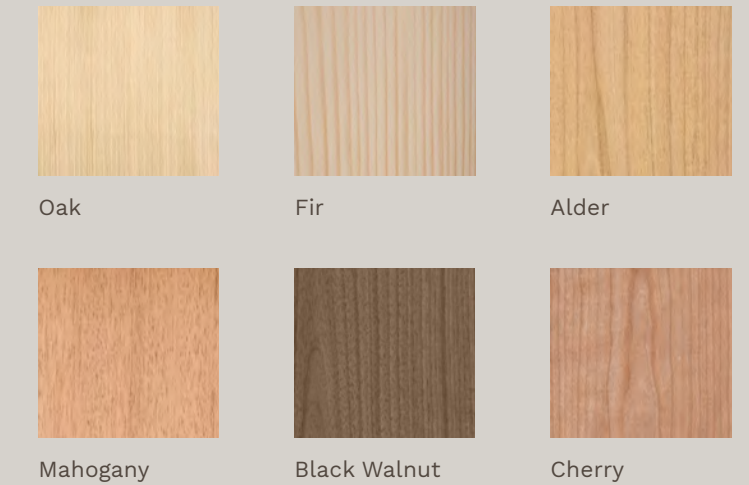
Max System Width	Unlimited
Max System Height	10 ft
Max Panel Width	40 in
Main Door One End	Yes
Main Door Both Ends (Butterfly)	Yes
U-Factor	0.29
Wood U-Factor	0.27
SHGC	0.17
Florida Building Code	FL42298.1
Title 24 Compliant	Yes

◀ Parmentor Homes, Lake Chelan, Washington

STANDARD COLORS



SPECIAL ORDER WOOD OPTIONS



PREMIUM ORDER



200+RAL COLORS



CUSTOM COLORS



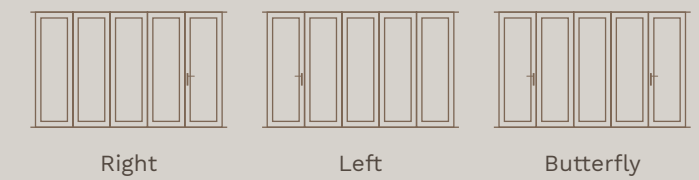


CHAMBERLIN XL

Designed for demanding climates, the Chamberlin XL from Panoramic Doors™ features a newly engineered frame with overlapping panels and a standard triple pane glass package for superior insulation. Rated DP 50, approved under the Florida Building Code, and fully compliant with California Title 24, it meets building standards nationwide while delivering high thermal efficiency, durability, and clean contemporary design.

DOOR CONFIGURATION

The Chamberlin XL offers three main door configurations, left, right, or butterfly, with main doors on both ends of the system.



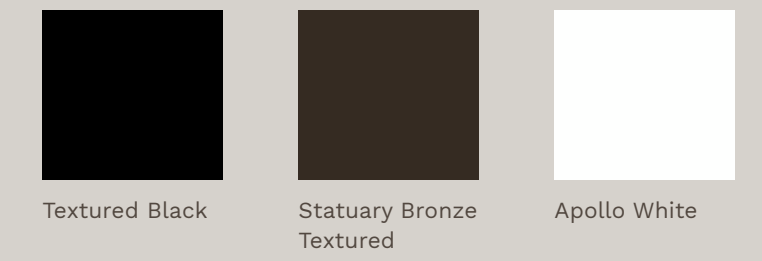
DOOR SPECIFICATIONS

Max System Width	Unlimited
Max System Height	10 ft
Max Panel Width*	40 in
Main Door One End	Yes
Main Door Both Ends (Butterfly)	Yes
U-Factor	0.25
SHGC	0.16 - 0.17
Florida Building Code	FL42297.1
Title 24 Compliant	Yes

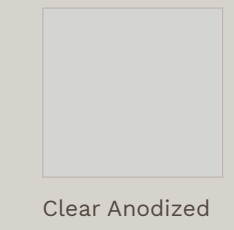
◀ Cherry Hill House, Cherry Hill, Colorado

*Custom selections may affect above results

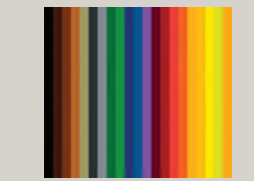
STANDARD COLORS



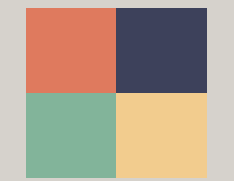
PREMIUM ORDER



200+RAL COLORS



CUSTOM COLORS



COASTAL COLLECTION

The Coastal Collection brings refined resilience to contemporary seaside architecture through two purpose-built systems designed for everyday openness and dependable storm protection. Coastal Vista (DP-50) features laminated impact glass, a seamless bottom-weighted track, and the Panoramic Doors™ Slide-Pivot-Stack operation for smooth, quiet opening. Coastal Storm (DP-70) advances performance. Both Coastal Vista and Coastal Storm are approved with High-Velocity Hurricane Zone (HVHZ) certification for environments where protection is critical.

Both systems are engineered for a refined weather-tight seal, enhanced thermal performance, and reliable operation in demanding coastal conditions. Reinforced glazing and structural design manage wind, rain, and impact while preserving open, expansive living. Available in right-stack, left-stack, and butterfly configurations and finished in a curated architectural palette, the Coastal Collection balances openness, protection, and architectural intent from calm coastal days to peak storm conditions.



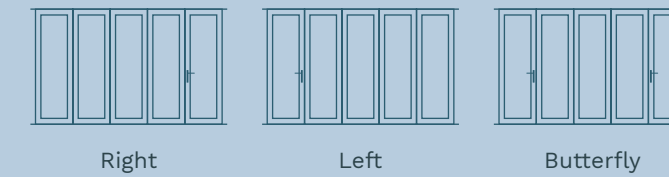


COASTAL VISTA DOOR

The Coastal Vista Door delivers open-wall living with coastal-ready performance. Engineered to a DP-50 rating (HVHZ approved), it features laminated impact glass, a smooth bottom-weighted track, and the patented Slide-Pivot-Stack operation for effortless movement and tight tongue-and-groove weather sealing when closed. Available in right, left, or butterfly configurations, it is designed for seaside homes, poolside spaces, and modern patio extensions where unobstructed views and durability are equally essential.

DOOR CONFIGURATION

The Coastal Vista Door offers three main door configurations, left, right, or butterfly, with main doors on both ends of the system.



DOOR SPECIFICATIONS

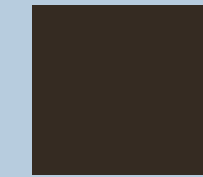
Max System Width	48 ft
Max System Height	10 ft
Max Panel Width	36 in
Main Door One End	Yes
Main Door Both Ends (Butterfly)	Yes
U-Factor	0.4
SHGC	0.18
Florida Building Code	FL47711.1

◀ Borromeo Group, Rancho Mirage, California

STANDARD COLORS



Textured Black



Statuary Bronze Textured



Apollo White

PREMIUM ORDER



Clear Anodized

200 + RAL COLORS



CUSTOM COLORS



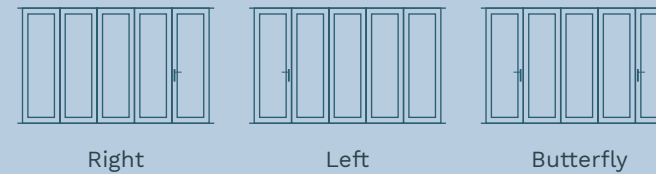


COASTAL STORM DOOR

Engineered for extreme coastal conditions, this door features a reinforced frame and six-point locking system to achieve a DP 70 rating against wind, rain, and debris. It is the only independent Slide-Pivot-Stack door approved for HVHZ under the Florida Building Code for Miami-Dade County, delivering refined design, expansive views, and dependable storm protection for modern homes and large properties.

DOOR CONFIGURATION

The Coastal Storm Door offers three main door configurations, left, right, or butterfly, with main doors on both ends of the system.

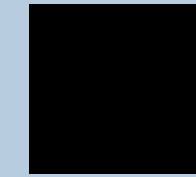


DOOR SPECIFICATIONS

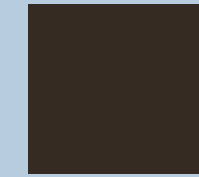
Max System Width	48 ft
Max System Height	10 ft
Max Panel Width	36 in
Main Door One End	Yes
Main Door Both Ends (Butterfly)	Yes
U-Factor	0.4
SHGC	0.18
Florida Building Code	FL42307.1

◀ Palm Beach, Florida

STANDARD COLORS



Textured Black



Statuary Bronze Textured



Apollo White

PREMIUM ORDER



Clear Anodized

200 + RAL COLORS



CUSTOM COLORS



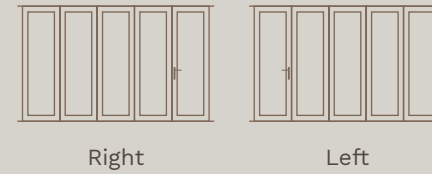


ABSOLUTE VINYL DOOR

The Absolute Vinyl Door from Panoramic Doors™ combines refined design with lasting strength, pairing seamlessly with vinyl windows for a cohesive, modern look. Crafted with extruded vinyl over a reinforced aluminum frame, it offers durability and smooth operation with a concealed multi-point locking system. The optional Chamberlin foam-filled frame boosts thermal efficiency, while dual-finish options enhance versatility. With a DP 30 rating and a standard Solarban 70™/clear glass package (other options available), it delivers comfort, performance, and style in one energy-efficient design.

DOOR CONFIGURATION

The Absolute Vinyl Door offers left or right main door configurations to suit a variety of layouts.

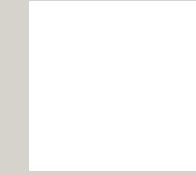


DOOR SPECIFICATIONS

Max System Width	19.5 ft
Max System Height	8 ft
Max Panel Width	38 in
Main Door One End	Yes
Main Door Both Ends (Butterfly)	No
U-Factor	0.30
SHGC	0.17

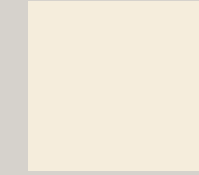
◀ Atlanta, Georgia

STANDARD COLORS



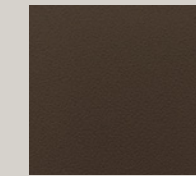
White

UPGRADED COLORS

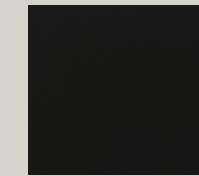


Beige

LAMINATED COLORS



Bronze



Black



CORNER DOOR

With its innovative post-less design and patented Slide-Pivot-Stack technology, the Corner Door spans seamlessly across two walls, creating uninterrupted panoramic views and dissolving boundaries for an expansive, elegant aesthetic. Featuring two main doors in every system, each operating independently, it allows interiors to open fluidly while maintaining precise control of movement. Ideal for offices, classrooms, restaurants, or any space designed to impress, the Corner Door transforms interiors into open, dynamic environments that connect indoors and outdoors while redefining spatial flow and inspiration.

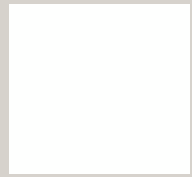
STANDARD COLORS



Textured Black



Statuary Bronze Textured



Apollo White

PREMIUM ORDER



Clear Anodized

200+RAL COLORS



CUSTOM COLORS



DOOR SPECIFICATIONS*

Max System Width	Match to System
Max System Height	10 ft
Max Panel Width (Panel width may be limited by system height)	40 in

FLAG DOOR

This innovative system combines a door and window at a post-less intersection, using the patented Slide-Pivot-Stack operation to eliminate physical barriers and create seamless spatial flow. Designed as a true door and pass-through window combination, it allows panels to move independently, opening interiors to natural light, fresh air, and uninterrupted views. Ideal for expanding kitchens into open-air dining spaces or creating conversational pass-throughs, it elevates everyday moments into refined, open experiences. Exclusively available with the Signature Aluminum Door and Pass-Through Window, it delivers architectural flexibility with design that feels as limitless as the views it frames.

DOOR SPECIFICATIONS*

Max System Width	Match to System
Max System Height	10 ft
Max Panel Width	40 in





PASS-THROUGH WINDOWS

Sliding and stacking pass-through windows expand interiors with uninterrupted sightlines and seamless transitions. Designed for kitchens, dining areas, and poolside spaces, the system is available in both aluminum and vinyl and pairs cleanly with transom windows for a refined finish. An interlocking tongue-and-groove design ensures a superior seal, while a concealed multi-point locking system delivers smooth operation and dependable security, balancing everyday function with precise craftsmanship.

WINDOW SPECIFICATIONS

Max System Width	Unlimited
Max System Height	8 ft
Max Panel Width	40 in
Main Window One End	Yes
Main Window Both Ends	No

◀ Chapel Hill, North Carolina

PICTURE WINDOWS

Designed to align seamlessly with Panoramic Doors™ systems, the matching picture window delivers uninterrupted floor-to-ceiling sightlines in premium aluminum construction. Ideal for stationary windows placed near or above the door, it offers flexible sizing, customizable colors, and a wide range of glass options to enhance panoramic views with a refined, integrated aesthetic. This feature is not available for the Absolute Vinyl Door system. Available in both framed and frameless versions.

WINDOW SPECIFICATIONS

Max System Width	Matched to System
Max System Height	8 ft

Saratoga, California ▶





RETRACTABLE SINGLE & DOUBLE SCREENS

Crafted from sheer yet durable fibers, the retractable screen provides protection without obstructing views. A Kevlar base delivers strength and long-term performance, while the durable pleated design allows smooth partial or full closure to suit changing conditions. Designed to span up to 16 feet with a single screen or 32 feet with a double, it integrates seamlessly into wide openings. Finished with a powder-coated frame matched to your Panoramic Door™ system, it preserves a clean, modern aesthetic while enhancing everyday comfort and usability.

SCREEN CONFIGURATION

Our retractable screens are tested to make sure the only thing that gets in is the breeze—available in 16ft single screen and 32ft double screen. All screens are placed on the system's interior and slide on their own track.



16 ft Single Screen



32 ft Double Screen

SCREEN SPECIFICATIONS

Max Screen Width	16 ft
Max Screen Height	10 ft
Max Double Screen Width	32 ft
Max Double Screen Height	10 ft
Visibility Through Screen	Yes

DOOR HANDLES

Explore our curated selection of carefully designed hardware to complement your Panoramic Door and elevate your personal style.

Estate

Estate handles, classic feel and easy grip, Black or Silver.

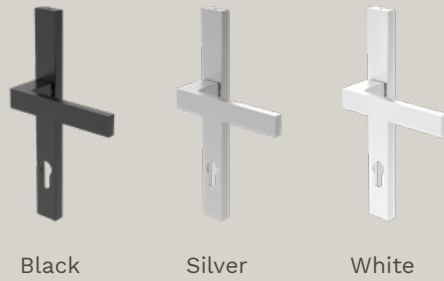


Black

Silver

Lakeview

Lakeview has a clean square look for a clean style, in Black, Silver, or White.



Black

Silver

White

PASS-THROUGH WINDOW HANDLE

Panoramic pass-through window handles in Black, Silver, or White offer smooth use and add style and security.



Black

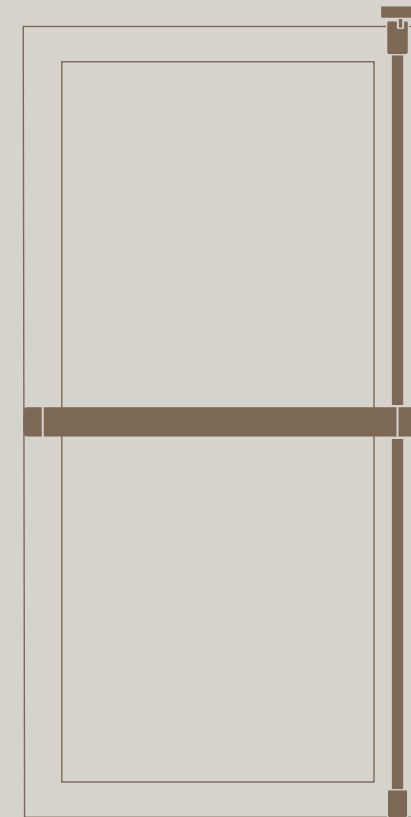
Silver

White

PANIC BAR

Safety, Refined for Modern Spaces

Panoramic Doors™ Panic Bar delivers intuitive safety for commercial spaces without disrupting architectural intent. Designed for high-traffic environments, it integrates seamlessly with glass and aluminum systems, providing code-compliant performance through a refined, minimal profile.



Exterior Panic Handle

Exterior-only handle compatible with panic bar hardware, with a refined profile.



Dark Bronze

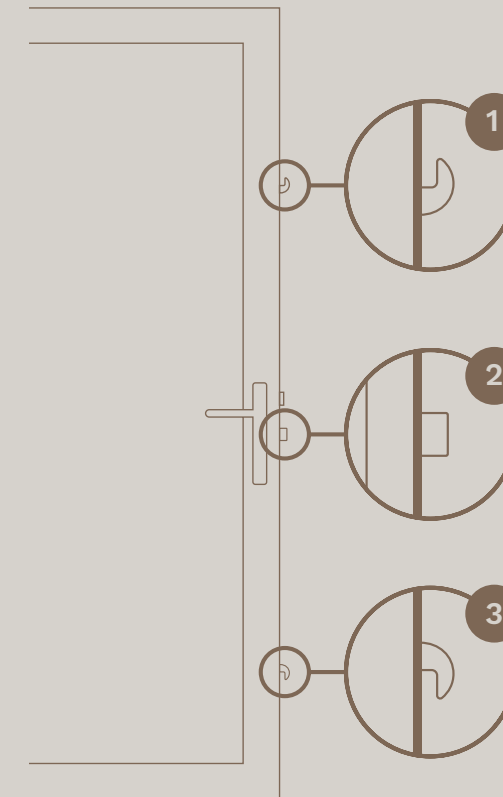


Satin Brushed

MULTI-POINT LOCKING SYSTEM

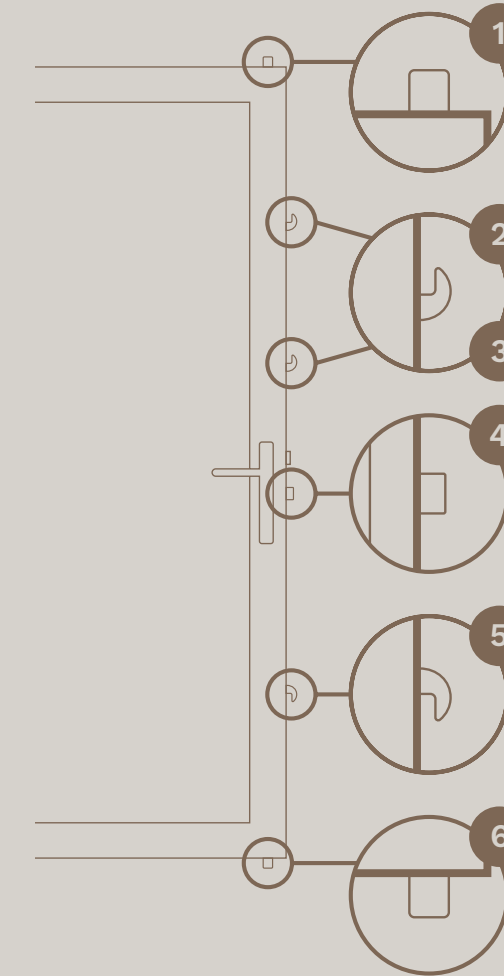
3-Point Locking System

Security is important. That is why all our doors come with 3-point locking systems on all main doors. This ensures your doors are locked at the top, middle, and bottom.



6-Point Locking System

For added security, our Coastal Vista, and Coastal Storm Door boast a 6-point lock system, including sturdy steel bolts and an extra locking hook for maximum strength in tough weather conditions.



GLASS TREATMENT OPTIONS

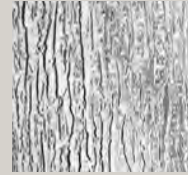
Our glass at Panoramic Doors™ is thermally broken for superior energy efficiency, reducing heat transfer and ensuring optimal comfort year-round. Low-E coatings provide exceptional insulation and UV protection, while Argon gas-filled panels and capillary tubes for higher-altitude installations enhance performance in any environment.

Customizable options include obscure glass for privacy, Turtle Glass to reduce glare in coastal areas, and the flexibility to treat select panels or the entire system to meet your needs. Panoramic Doors™ delivers innovative, energy-smart glass solutions designed to complement your lifestyle.

GLASS TREATMENTS



Obscure



Rain Glass



Satin Etch



Turtle Glass

GRID OPTIONS

Looking to add Grids to your Panoramic Door system? We have options to meet your tastes.



Exterior Grid

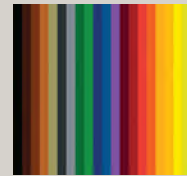
- SDL - Simulated Divided Lites
- Exterior grid system flush off the sash



Interior Grid

- GBG - Grids Between Glass
- Interior grid system between glass panels, offering a variety of design options.

GLASS TINTS



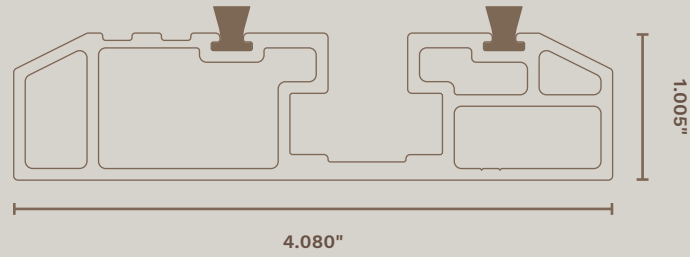
100+ Tint Colors

DOOR SPECIFICATIONS OVERVIEW

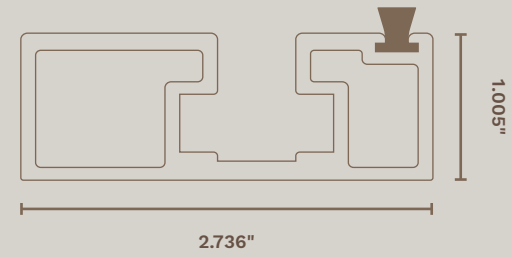
	Absolute Vinyl	Signature Aluminum	Chamberlin	Chamberlin XL	Coastal Vista	Coastal Storm
MAX System Width	19.5 ft	Unlimited	Unlimited	Unlimited	48 ft	48 ft
MAX System Height	8 ft	10 ft	10 ft	10 ft	10 ft	10 ft
MAX Panel Width	38 in	40 in*	40 in*	40 in*	36 in	36 in
Swing Door Both Side Butterfly	No	Yes	Yes	Yes	Yes	Yes
ADA Compliant	No	Yes	Yes	No	No	No
U-Factor	0.30	0.34	0.29	0.28 w/Dual Pane 0.25 w/Triple Pane	0.38 w/Dual Pane 0.34 w/Triple Pane 0.40 w/Impact	0.38 w/Dual Pane 0.34 w/Triple Pane 0.40 w/Impact
SHGC	0.17	0.17	0.17	0.17 w/Dual Pane 0.16 w/Triple Pane	0.17 w/Dual Pane 0.16 w/Triple Pane 0.18 w/Impact	0.17 w/Dual Pane 0.16 w/Triple Pane 0.18 w/Impact
Design Pressure Rating	DP30	DP50	DP50	DP50	DP50	DP70
Standard Colors	White Beige Black Bronze	White Black Bronze	White Black Bronze	White Black Bronze	White Black Bronze	White Black Bronze
Custom Colors		Yes	Yes	Yes	Yes	Yes
Screen Option	Yes	Yes	Yes	Yes	Yes	Yes
Flush or Upstand Track	Both	Both	Both	Upstand Only	Upstand Only	Upstand Only
Certified Tempered Glass		KCI-IG-1256-1	KCI-IG-1256-1	KCI-IG-1256-1	KCI-IG-1256-1	KCI-IG-1256-1
Florida Building Code	N/A	FL42251.1	FL42298.1	FL42297.1	FL47711.1	FL42307.1
Foam Insulation	No	No	Spray Foam	Spray Foam	No	No
Overlapping T-sash	No	No	No	Yes	Yes	Yes
California Title 24 Compliant	Chamberlin	No	Yes	Yes	No	No
HVHZ Compliant					Yes	Yes
Special Notes					Steel Rod Fiberglass Reinforced	Steel Rod Fiberglass Reinforced
Picture Window Capable	No	Yes	Yes	Yes	Yes	Yes

*Panel width may be limited by system height

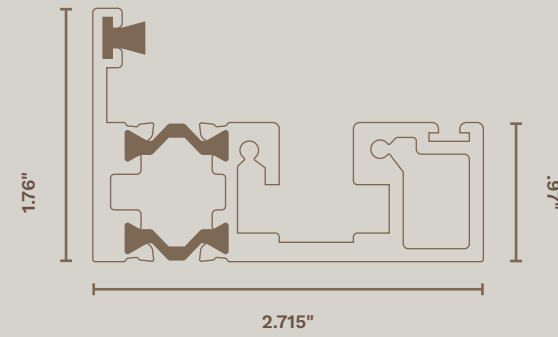
TRACKS



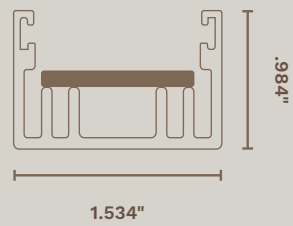
ADA Track



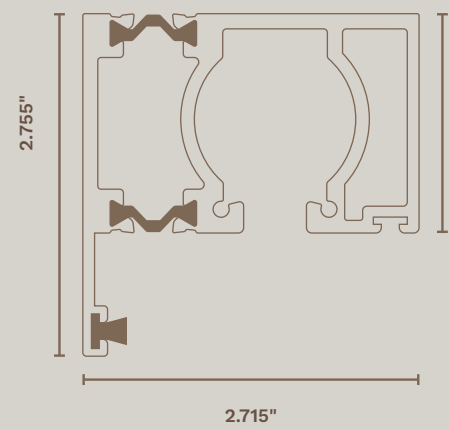
Flush Track



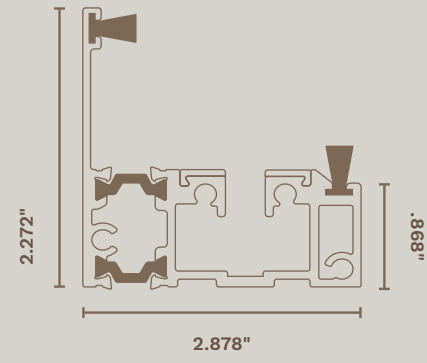
Upstand Track



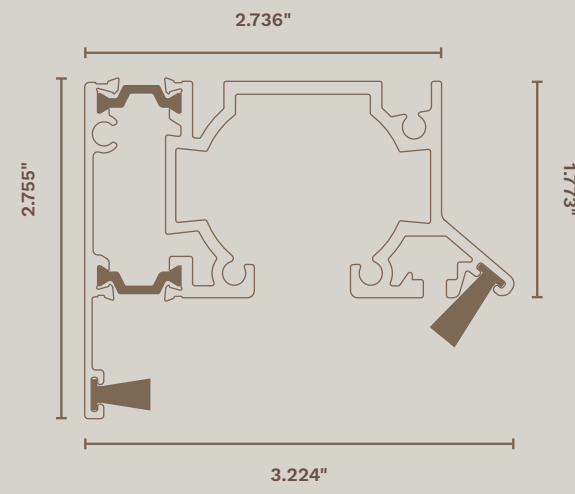
Screen Track



Top Track



Coastal Collection
Bottom Track

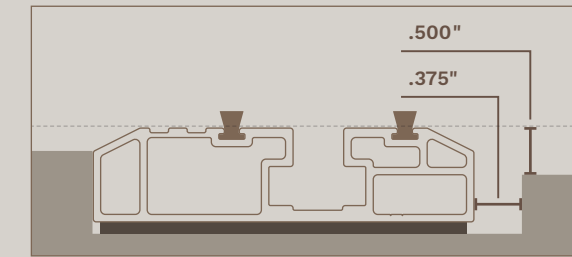


Coastal Collection
Top Track

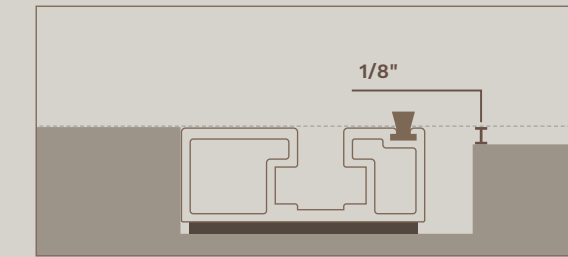
TRACK PLACEMENT

Depending on your design requirements, the bottom track can be installed on top of the subfloor or embedded into the floor.

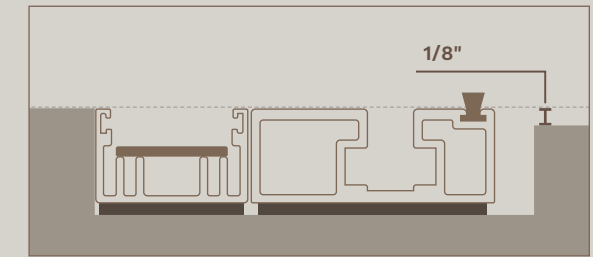
Below are the most common placements for upstand and flush tracks. Please consult with your contractor or sales representative to confirm the appropriate track type and bottom track placement.



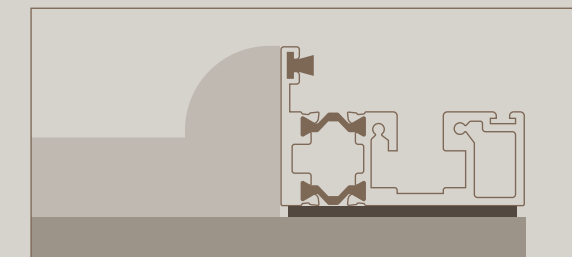
ADA track inset in subfloor



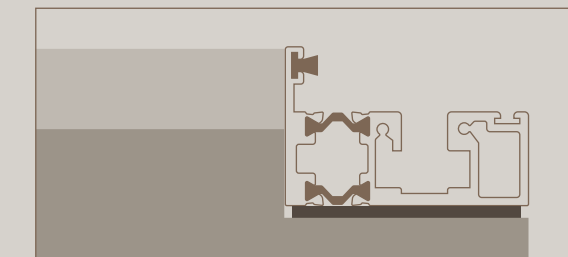
Flush track inset in subfloor



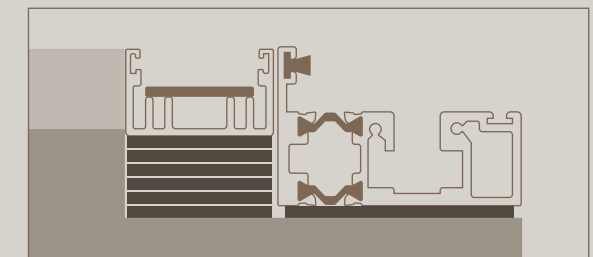
Flush and screen track inset in subfloor



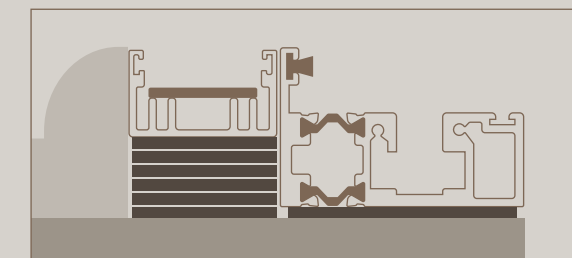
Upstand track on subfloor



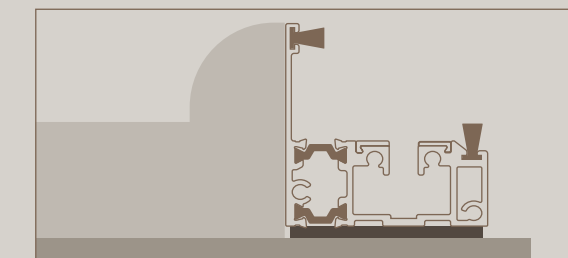
Upstand track on cut subfloor



Upstand and screen track on cut subfloor

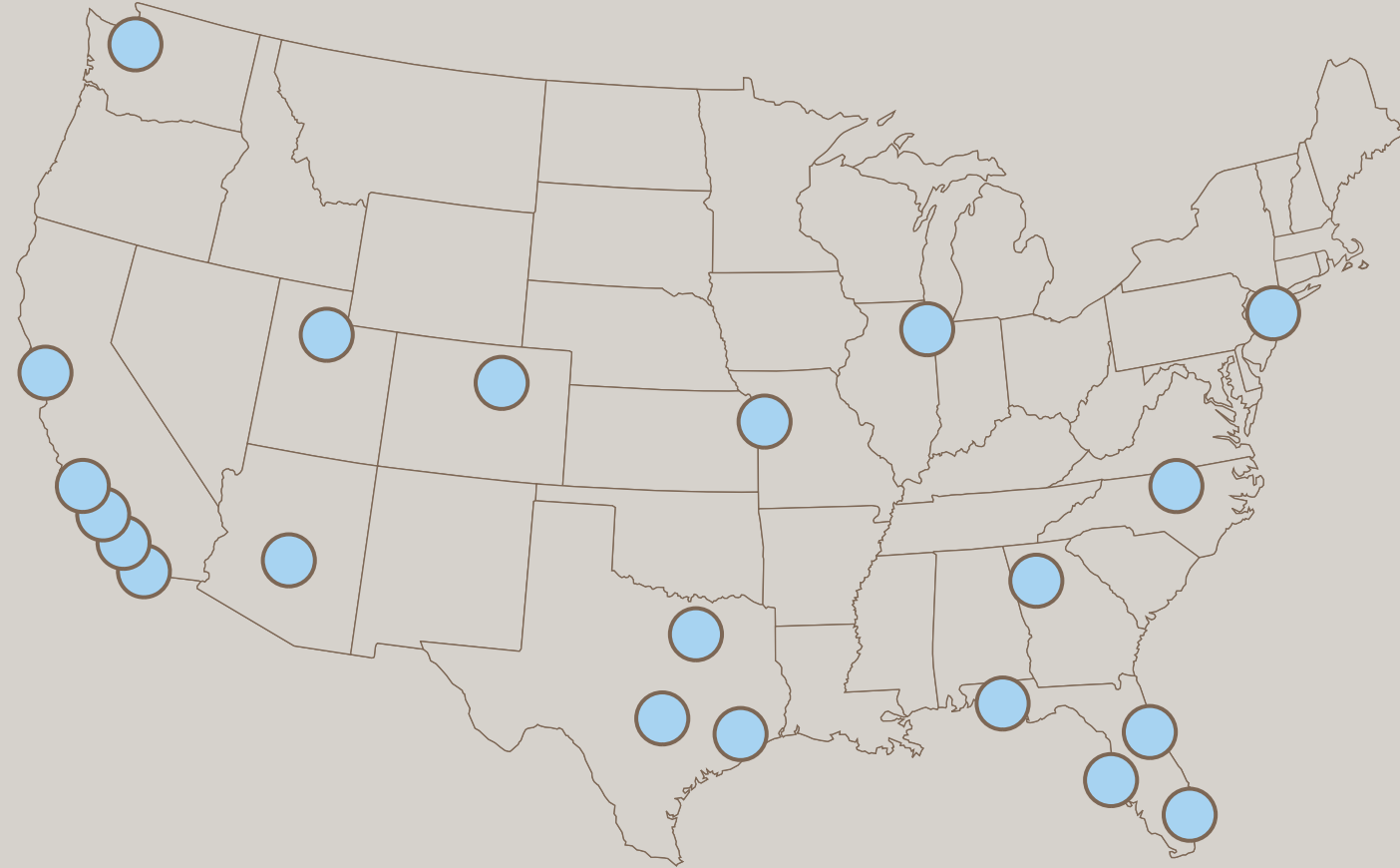


Upstand track and screen on subfloor



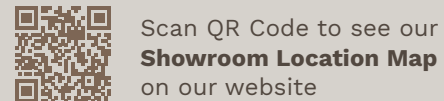
Coastal Storm Door Bottom track on subfloor

SHOWROOMS



Locations

- | | | |
|-------------|-----------------|----------------|
| Atlanta | Destin | Orlando |
| Austin | Fort Lauderdale | Salt Lake City |
| Burlingame | Houston | San Diego |
| Chicago | Kansas City | Santa Barbara |
| Chapel Hill | Los Angeles | Scottsdale |
| Dallas | North East | Seattle |
| Denver | Orange County | Tampa |



Scan QR Code to see our **Showroom Location Map** on our website

RESOURCE GUIDE & CONTACT INFORMATION

With Panoramic Doors™, you're buying factory-direct—no middlemen, no unnecessary markups. This means you get premium-quality doors at unbeatable prices, straight from the source.

Customer Sales

For quotes, product inquiries, and purchasing support, our sales team is available via email and phone.

Days: Monday - Saturday
Time: 8 am - 7 pm Central
Phone: 817-952-3500
Email: sales@panoramicdoors.com



Scan QR Code to **request a quote** on our website

Service + Technical Support

For questions regarding parts, product operation, or repair.

Days: Monday - Friday
Time: 8 am - 5 pm Central
Phone: 760-616-5018
Email: service@panoramicdoors.com



Scan QR Code to visit our **Installation Resources** page on our website

Architectural Resources

Panoramic Doors™ offers downloadable REVIT and CAD files on our website, allowing architects and builders to integrate our systems quickly and accurately, from concept through construction.



Scan QR Code to visit our **Architectural Resources** page on our website

CERTIFICATIONS & ASSOCIATIONS



California Title 24 Compliant



Florida Building Code Compliant



Texas Department of Insurance



Miami-Dade County Approved

Bigger Views. Better Living.

Panoramic Doors™ Slide-Pivot-Stack system opens spaces in ways traditional doors simply can't.



© 2026 Panoramic Doors™ LLC.
All Rights Reserved.

