

**HAYER & BOECKER**



**DIE DRAHTWEBER**

# **ARCHITECTURAL MESH FOR PARKING GARAGES.**





# PERFECT FOR CAR PARKS. ADVANTAGES OF ARCHITECTURAL MESH.

HAYER Architectural Mesh made of stainless steel offers various options in car park architecture due to its functional and aesthetic properties. Both inside and outside it stands out due to an elegant appearance, and in doing so meets the highest demands of safety, stability and weather resistance. HAYER Architectural Mesh ensures a bright atmosphere that brings together transparency and design in a unique way.



Semi-transparent facade cladding with HAYER Architectural Mesh. Car park Domain8, Austin, USA.

## Advantages of architectural mesh:

### Natural Ventilation

Architectural mesh is light, durable and transparent, providing an array of benefits for parking facilities. The transparency of architectural mesh allows it to act as a natural ventilation system. By utilizing wire mesh on the facade of your parking facility, you can eliminate the need for costly HVAC systems, which will not only reduce energy costs but also have a positive environmental impact. Additionally, the openness of the mesh allows an abundance of natural light and air to flow through the parking facility.

### Sun Protection

Architectural mesh offers effective sun protection to parking garages. The horizontal wires of the mesh facade act as a light barrier, helping to maintain a comfortable temperature within the parking garage.

### Fall Protection

Made from stainless steel, our woven architectural mesh is incredibly strong, rigid and durable. As façade cladding and parapet or balustrade infill it is capable of providing effective fall protection.

### Weather Protection

From harsh snow to dry desert heat or high winds, architectural mesh facades on your parking garage are functional for any weather conditions. Our stainless steel mesh acts as an efficient and cost effective barrier to weather conditions around the world.

### Low Maintenance - Easy Installation

Our architectural mesh comes ready to install with complete and easy-to-follow instructions. We provide unique engineering support and calculations for each project based on your necessary requirements and offer onsite assistance to eliminate risk. The mesh panels arrive with all required hardware, helping simplify the installation process. Once installed, stainless steel architectural mesh facades require little-to-no maintenance.

### Cost Effective

We are able to provide you with a mesh facade panel tensioned over the full height of your parking garage. This means that only a solid substructure is required at the top and bottom mounting points of your parking garage. The different levels of your parking garage require an intermediate tube to absorb horizontal loads. The costs of this substructure and installation are significantly lower compared to framed facade material solutions.

### Unique Aesthetic

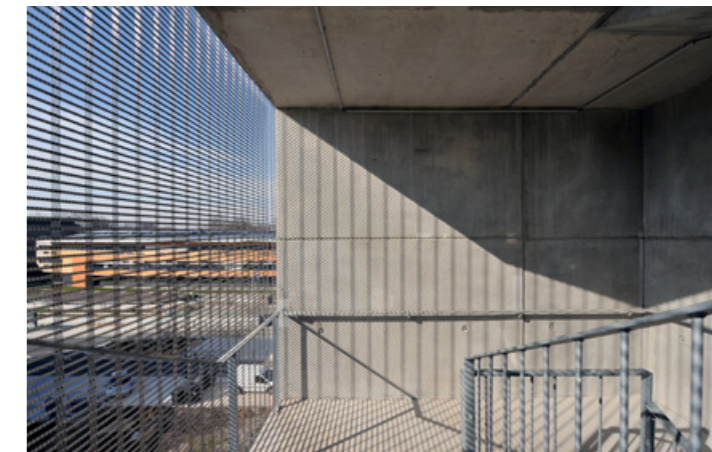
Architectural woven mesh can meet your aesthetic and functional needs. With a wide variety of mesh patterns and the ability to paint images onto the mesh itself, your parking garage is made completely custom to your specification and is 100 percent unique to your application.

### Environmental Responsibility

Stainless steel has an average recycled content of at least 60 percent and is 100 percent recyclable at end of use. By using architectural mesh not only are you getting a custom parking garage detailed to your specifications, you are also increasing the sustainability of your building.



Large-scale wire mesh cladding with homogeneous appearance. Parking garage Barmherzige Brüder Hospital, Regensburg, Germany.



Provides fall protection and natural ventilation and lighting through HAYER Architectural Mesh. Parking garage Terre Sud, Bègles, France.



HAYER Architectural Mesh panels, partially painted. Parking garage Los Angeles Police Department, USA.





HAYER & BOECKER OHG  
Ennigerloher Straße 64 · 59302 Oelde · Germany  
Phone: +49-(0)25 22-30 684 · Fax: +49-(0)25 22-30 767  
E-Mail: [architecture@weavingideas.com](mailto:architecture@weavingideas.com)  
Internet: [www.weavingarchitecture.com](http://www.weavingarchitecture.com)

Photos:  
POSITIF photographies d'architecture  
Paul Bardagjy  
N. Kazakov  
HedrichBlessing