

Aluminium clad wood entry doors



# Aluminium clad wood entry door overview

Weatherproof outside – comfortable inside





# Content

UNILUX opening up perspectives	04
All good things come in sixes: The UNILUX brand advantages	06
Advantages of aluminium clad wood	08
UNILUX's aluminium clad wood entry doors line DESIGN	10
UNILUX's aluminium clad wood entry doors line ELEGANCE	36
UNILUX's aluminium clad wood entry doors line HISTORY	50
UNILUX's aluminium clad wood side doors	54
Freedom to choose shapes and materials	58
Glass	64
Hardware	68
Security	76
Overview	80
The reliability of a big name	82







UNILUX

# One brand. One promise.

The only thing modern-day doors have in common with their “ancestors” is their name. Good carpentry work and appearance alone is no longer enough, because energy efficiency, safety, and functionality standards have increased dramatically to meet today’s customer needs.

That’s why all UNILUX aluminium clad wood entry doors are inhouse developments, demonstrating an extraordinary degree of product intelligence and complex engineering.

**To ensure these masterpieces are not just available to a selected group of people, UNILUX produces them as series, enabling the unique aluminium clad wood products to be sold at prices which make top quality affordable.**

UNILUX opening up perspectives.



All good things come in sixes:

# The UNILUX brand advantages.

## Brand advantage 1: Durability

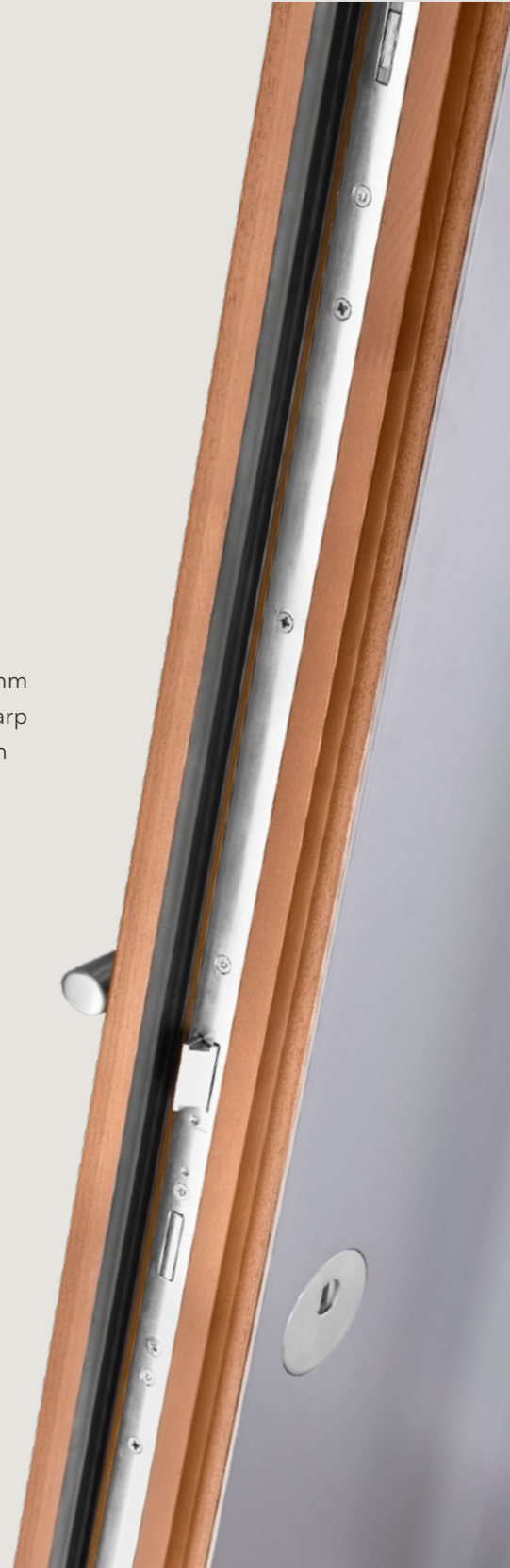
Each of our aluminium clad wood entry doors have solid panels up to 31/8"/90 mm thick. The door panels are reinforced with steel, giving them an integrated antiwarp system. The high-quality workmanship and strict quality controls ensure you gain long-term enjoyment from your UNILUX door.

## Brand advantage 2: Freedom of design

Tastes are subjective. That's why you can choose from no less than 40 models. And that's just the start of it. You can design each of these models to suit your own requirements. From selection of the wood, to the color scheme (all RAL colors and special wood shades), to the glass and handle. Variety works.

## Brand advantage 3: Energy efficiency

UNILUX's solid construction style not only guarantees durability, but also help save energy. Each of our aluminium clad wood entry doors has state of the art "warm-edge" spacers between the glass panes, ensuring better thermal values, greater comfort near the window, and significantly reduced condensation build-up during colder months. Each UNILUX door is also available with optional 15/8"/40 mm thick triple glazing, further reducing heating costs.





#### **Brand advantage 4: Safety**

Sometimes a front door's job is not just to keep out wind and rain, but also uninvited guests. That's why all UNILUX locking parts are made from highquality materials. Each of our aluminium clad wood entry doors also has two anti-lift devices on the hinge side and an integrated triple self-locking multi-point system as a standard.

#### **Brand advantage 5: Service**

UNILUX only works with expertly qualified specialist retailers, located across the country with their own showrooms. Your regional UNILUX retailer will offer you detailed advice and assist you with your plans. It will also ensure prompt, correct assembly, and will be available at any time if you have any service-related needs.

#### **Brand advantage 6: Brand quality**

Since 1955, UNILUX's philosophy has been: Only products of uncompromising quality must leave the factory. This saw our company become a recognised quality leader over the decades. Anyone who pays heed to the UNILUX logo can be certain of always receiving a "Made in Germany"-branded product.







## Advantages of aluminium clad wood

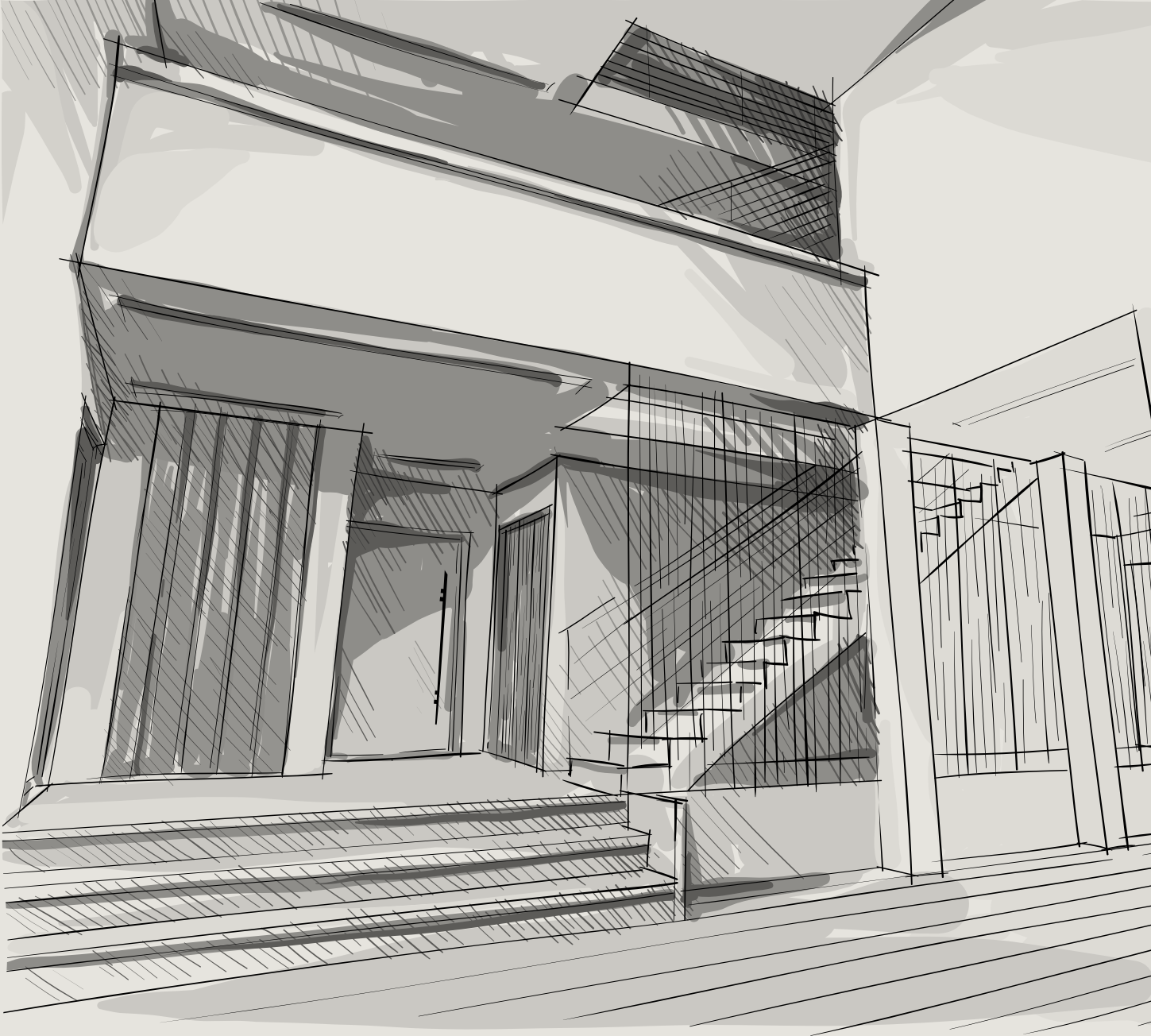
# Aluminium on the outside, pure wood on the inside – combined for generations.

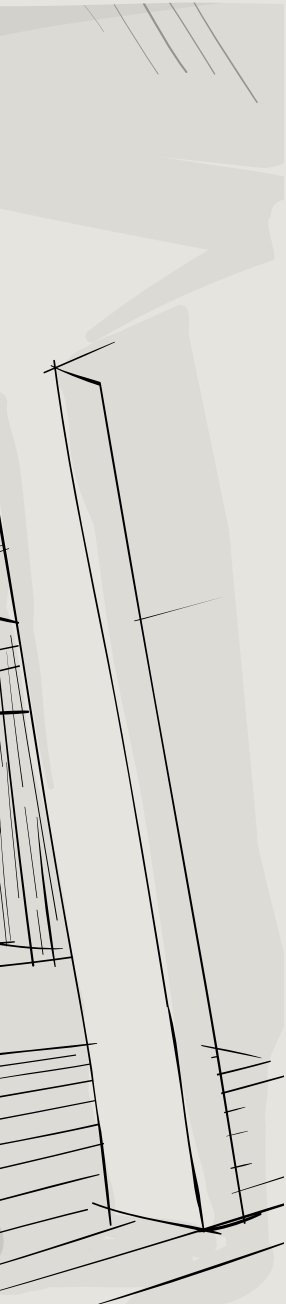
Wood creates comfort – it is a feel-good material. Aluminium, on the other hand, is robust - a protective shield against the elements. Together, they form an aluminium clad wood product which lasts generations without the need for continuous maintenance.

The wood interior does not require UV protection in the form of coloring pigments in the finish. It can be used in its natural form thanks to the aluminium cladding. The cladding firmly encases the wood, protecting it from the elements while still giving room to expand and contract and cope perfectly with temperature fluctuations.

**UNILUX aluminium clad wood entry doors:** The originals.







UNILUX's door line design

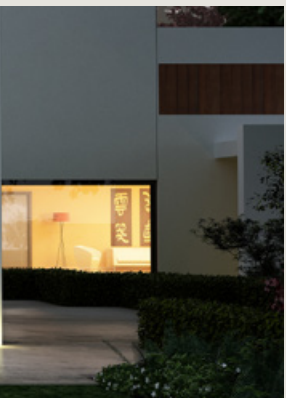
# Trend-setting. Purist. Modern.

Perhaps the most important basic rule of a good design: Less is more. In order to be effective, forms should not be overloaded or exaggerated, because only by doing away with superfluous embellishments does the true essence of an object come clearly to the fore. A nice by-product of this is the fact that people never tire of looking at clean lines.

**The DESIGN line represents contemporary style.**

**Uncompromising in its aesthetic demands, it is intended for sophisticated and challenging architecture.**

The DESIGN line – reduced to the essential elements.





### **Type 1140**

- 3 Light cut-outs
- satin glass
- 3 Grooves
- External handle 7043
- Protective rosette



### **Type 1141**

- 1 Light cut-out
- satin glass
- Pilaster strips (raised)
- application slate Autumn Rustic
- External handle 7041
- Protective rosette



### **Type 1143**

- 3 Light cut-outs
- satin glass
- Pilaster strips (raised or flush)
- application pottery Beton Silk
- External handle 7043
- Protective rosette



### **Type 1150**

- without Light cut-out
- application pottery Iron Corten
- External handle 7043
- Protective rosette



### **Type 1142**

- 3 Light cut-outs
- satin glass
- Grooves or pilaster strips (raised or flush)
- External handle 7041
- Protective rosette (optional: flush, round rosette)



### **Type 1148**

- 1 Light cut-out
- sandblasted glass with clear stripes
- Grooves or pilaster strips (raised or flush)
- External handle 7090
- Protective rosette



Sandgestrahltes  
Glas mit klarer  
Schrift für Straße &  
Hausnummer



### **Type 1146**

- 1 Light cut-out
- sandblasted glass with clear stripes
- External handle 7003
- Protective rosette



### **Type 1147**

- 1 Light cut-out
- optionally with sandblasted glass with clear lettering for street name and house number
- Stainless steel applications
- External handel 7043
- Protective rosette



### **Type 1149**

- ohne Lichtausschnitt
- Stainless steel-Applikationen
- Außengriff 7091
- Schutzrosette
- Nuten oder Lisenen (erhaben oder flächenbündig)

Holzoptik,  
Keramik- oder  
Schiefer-  
Applikationen



01



02



### **Type 1144**

- 1 Light cut-out
- sandblasted glass with clear stripes
- Pilaster strips (raised)
- Wooden optics, ceramics or slate applications (Black Line)
- External handle 7042
- Protective rosette

[01 Type 1144

[02 Type 1150





**Type 1100**

- LivingLine aluminium cladding
- Color DB 703
- External handle 7007
- Flush protective rosette



**Type 1100**

- LivingLine aluminium cladding
- Color RAL 3004 Purple red
- External handle 7007
- Flush protective rosette
- Stainless-steel base



**Type 1100**

- LivingLine aluminium cladding
- Color RAL 5011 Steel blue
- External handle 7007
- Flush protective rosette
- Stainless-steel base



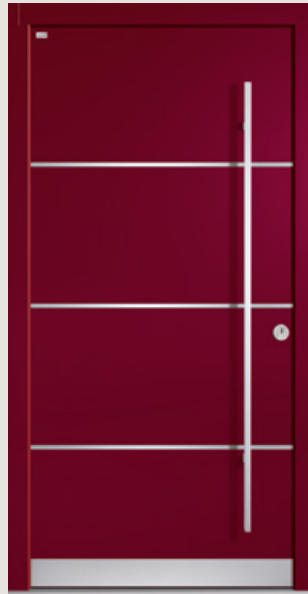
**Type 1100**  
**Internal view**

- Oak wood
- Color EI 151 Dark oak
- Internal knob 2002



### **Type 1101**

- ModernLine aluminium cladding
- Color RAL 7035 Light grey
- Flush stainless-steel pilaster strips
- External handle 7042 indented
- Protective rosette



### **Type 1101**

- ModernLine aluminium cladding
- Color RAL 3004 Purple red
- Flush stainless-steel pilaster strips
- External handle 7042 indented
- Protective rosette
- Stainless-steel base



### **Type 1101**

- ModernLine aluminium cladding
- Color RAL 5000 Violet blue
- External handle 7042 indented
- Protective rosette



### **Type 1101** **Internal view**

- Pine wood
- Color KI 123 Red Montana
- Cross-veneer
- Internal knob 2008





### Type 1105

- LivingLine aluminium cladding
- Colors DB 703 and RAL 9007 Grey aluminium
- Glass 839 (sandblasting on Reflo, with bevels)
- External handle 7031
- Flush protective rosette
- Stainless-steel base



### Type 1105

- LivingLine aluminium cladding
- Color RAL 7015 Slate grey
- Glass 839 (sandblasting on Reflo, with bevels)
- External handle 7031
- Flush protective rosette
- Stainless-steel base



### Type 1105

- LivingLine aluminium cladding
- Colors RAL 9016 Traffic white and RAL 7040 Window grey
- Clear glass
- External handle 7031
- Flush protective rosette



### Type 1105 Internal view

- Pine wood
- Color KI 146 Grey, transparent
- Glass 839 (sandblasting on Reflo, with bevels)
- Internal knob 2005



01



02

**[01 Type 1101**

Color RAL 8003  
Clay brown

**[02 Type 1106**

Colors RAL 7035  
Light grey and  
RAL 2013 Pearl  
orange





### **Type 1106**

- ModernLine aluminium cladding
- Colors RAL 7035 Light grey and RAL 3004 Purple red
- Glass 840 (Float with sandblasting and polished notched bevel)
- External handle 7026
- Flush protective rosette
- Stainless-steel base



### **Type 1106**

- ModernLine aluminium cladding
- Colors RAL 7016 Anthracite grey and RAL 9016 Traffic white
- Satinato glass
- External handle 7026
- Flush protective rosette



### **Type 1106**

- ModernLine aluminium cladding
- Color DB 703
- Glass 840 (Float with sandblasting and polished notched bevel)
- External handle 7026
- Flush protective rosette



### **Type 1106** **Internal view**

- Larch wood
- Color LR 147 Tineo
- Glass 840 (Float with sandblasting and polished notched bevel)
- Internal knob 2013



### **Type 1107**

- ModernLine aluminium cladding
- Color DB 703
- Glass 842 (Sandblasting pattern on clear glass)
- External handle 7026
- Protective rosette
- Stainless-steel base



### **Type 1107**

- ModernLine aluminium cladding
- Color RAL 7035 Light grey
- Glass 841 glass (Sandblasting pattern on clear glass)
- External handle 7026
- Protective rosette



### **Type 1107**

- ModernLine aluminium cladding
- Color RAL 3020 Traffic red
- Clear glass
- External handle 7026
- Protective rosette



### **Type 1107** **Internal view**

- Pine wood
- Color KI 140 Walnut transparent II
- Glass 842 (Sandblasting pattern on clear glass)
- Internal knob 2002





### **Type 1108**

- ModernLine aluminium cladding
- Color RAL 7035 Light grey
- Glass 843 (Reflo with polished notched bevel and three glass stones)
- External handle 7026
- Protective rosette



### **Type 1108**

- LivingLine aluminium cladding
- Color RAL 3001 Signal red
- Flamme glass
- External handle 7026
- Protective rosette
- Stainless-steel base



### **Type 1108**

- ModernLine aluminium cladding
- Color DB 703
- Glass 842 (Sandblasting pattern on clear glass)
- External handle 7026
- Protective rosette
- Stainless-steel base



### **Type 1108** **Internal view**

- Pine wood
- Color KI 143 Tobacco
- Glass 843 (Reflo with polished notched bevel and three glass stones)
- Internal knob 2007



### **Type 1109**

- LivingLine aluminium cladding
- Color DB 703
- Horizontal Basic Madras glass
- External handle 7031
- Protective rosette



### **Type 1109**

- LivingLine aluminium cladding
- Color RAL 3013 Tomato red
- Masterligne glass
- External handle 7031
- Protective rosette
- Stainless-steel base



### **Type 1109**

- LivingLine aluminium cladding
- Color RAL 9007 Grey aluminium
- Flamme glass
- External handle 7031
- Protective rosette



### **Type 1109** **Internal view**

- Oak wood
- Color EI 150 Golden Oak
- Masterligne glass
- Internal knob 2006





### **Type 1110**

- ModernLine aluminium cladding
- Color DB 703
- Clear glass
- External handle 7036
- Flush protective rosette
- Stainless-steel base



### **Type 1110**

- ModernLine aluminium cladding
- Color RAL 1015 Light ivory
- Glass 844 (sandblasting on Reflo, four glass stones and ruby red panel)
- External handle 7036
- Flush protective rosette



### **Type 1110**

- ModernLine aluminium cladding
- Color RAL 3001 Signal red
- Glass 844 (sandblasting on Reflo, four glass stones and ruby red panel)
- External handle 7036
- Flush protective rosette
- Stainless-steel base



**Flush protective rosette**



### **Type 1110** **Internal view**

- Pine wood
- Color KI 117 Beech
- Glass 844 (sandblasting on Reflo, four glass stones and ruby red panel)
- Internal knob 2007



01



02

[01 **Type 1110**  
Color DB 703

[02 **Type 1113**  
Color RAL 7016  
Anthracite grey





### **Type 1113**

- LivingLine aluminium cladding
- Color RAL 9016 Traffic white
- Clear glass
- External handle 7033
- Protective rosette
- Stainless-steel base



### **Type 1113**

- LivingLine aluminium cladding
- Colors RAL 7015 Slate grey and RAL 7035 Light grey
- Punto glass
- External handle 7033
- Protective rosette



### **Type 1113**

- LivingLine aluminium cladding
- Color RAL 7016 Anthracite grey
- Reflo glass
- External handle 7033
- Protective rosette
- Stainless-steel base



### **Type 1113** **Internal view**

- Pine wood
- Color KI 137 transparent matt
- Reflo glass
- Internal knob 2001



### **Type 1114**

- ModernLine aluminium cladding
- Color RAL 7035 Light grey
- Clear glass
- External handle 7034
- Flush protective rosette



### **Type 1114**

- ModernLine aluminium cladding
- Color DB 703
- Uadi glass
- External handle 7034
- Flush protective rosette
- Stainless-steel base



### **Type 1114**

- ModernLine aluminium cladding
- Color RAL 5020 Ocean blue
- Punto glass
- External handle 7034
- Flush protective rosette
- Stainless-steel base



### **Type 1114** **Internal view**

- Larch wood
- Color LR 149 American Cherry
- Uadi glass
- Internal knob 2001





### Type 1115

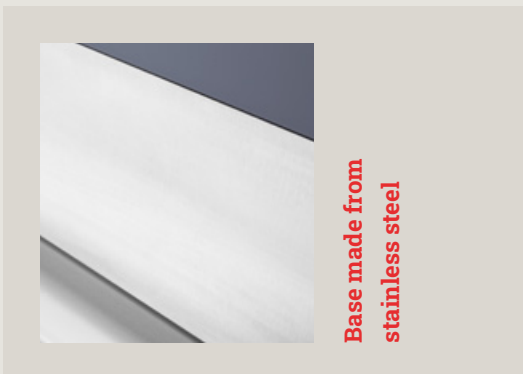
- LivingLine aluminium cladding
- Color RAL 7015 Slate grey
- Pave glass
- External handle 7018
- Flush protective rosette
- Stainless-steel base

### Type 1115

- LivingLine aluminium cladding
- Color RAL 5000 Violet blue
- Glass 846 (Clear glass and sandblasting, separated by a black line)
- External handle 7018
- Flush protective rosette

### Type 1115

- LivingLine aluminium cladding
- Color DB 703
- Glass 846 (Clear glass and sandblasting, separated by a black line)
- External handle 7018
- Flush protective rosette
- Stainless-steel base



**Base made from stainless steel**



### Type 1115 Internal view

- Pine wood
- Color KI 117 Beech
- Glass 846 (Clear glass and sandblasting, separated by a black line)
- Internal knob 2002



### **Type 1126**

- ModernLine aluminium cladding
- Color RAL 9016 Traffic white
- Glass 856 (sandblasting pattern on Float)
- External handle 7041 indented
- Flush protective rosette



### **Type 1126**

- ModernLine aluminium cladding
- Color RAL 7016 Anthracite grey
- Thela glass
- External handle 7041 indented
- Flush protective rosette



### **Type 1126**

- ModernLine aluminium cladding
- Colors RAL 3013 Tomato red and RAL 7016 Anthracite grey
- Glass 856 (sandblasting pattern on Float)
- External handle 7041 indented
- Flush protective rosette



### **Type 1126** **Internal view**

- Larch wood
- Color LR 140 Walnut transparent II
- Glass 856 (sandblasting pattern on Float)
- Internal knob 2007





### **Type 1128**

- LivingLine aluminium cladding
- Colors RAL 3022 Salmon pink and RAL 7016 Anthracite grey
- Glass 857 (Sandblasting strips with rods on Reflo)
- External handle 7048
- Square protective rosette



### **Type 1128**

- LivingLine aluminium cladding
- Color RAL 7016 Anthracite grey
- Reflo glass
- External handle 7048
- Square protective rosette
- Stainless-steel base



### **Type 1128**

- LivingLine aluminium cladding
- Colors RAL 9016 Traffic white and RAL 7016 Anthracite grey
- Clear glass
- External handle 7048
- Square protective rosette
- Stainless-steel base



### **Type 1128** **Internal view**

- Larch wood
- Color LR 146 Grey, transparent
- Reflo glass
- Internal knob 2002



### **Type 1201**

- LivingLine aluminium cladding
- Color 9007 Grey aluminium
- Glass 858 (Satinato and sandblasting on clear glass with three glass stones)
- External handle 7037
- Protective rosette



### **Type 1201**

- LivingLine aluminium cladding
- Color RAL 7015 Slate grey
- Glass 858 (Satinato and sandblasting on clear glass with three glass stones)
- External handle 7037
- Protective rosette



### **Type 1201**

- LivingLine aluminium cladding
- Color RAL 5020 Ocean blue
- Reflo glass
- External handle 7037
- Protective rosette



### **Type 1201** **Internal view**

- Pine wood
- Color KI 145 Cedar
- Glass 858 (Satinato sandblasting on clear glass with three glass stones)
- Internal knob 2007





**Type 1202**

- LivingLine aluminium cladding
- Color RAL 3020 Traffic red
- Satinato glass
- External handle 7033
- Protective rosette



**Type 1202**

- LivingLine aluminium cladding
- Color DB 703
- Clear glass
- External handle 7033
- Protective rosette



**Type 1202**

- LivingLine aluminium cladding
- Color RAL 5000 Violet blue
- Clear glass
- External handle 7033
- Protective rosette



**Type 1202**  
**Internal view**

- Oak wood
- Color EI 143 Tobacco
- Clear glass
- Internal knob 2002



01



02

**[01 Type 1201**  
Color RAL 7015  
Slate grey

**[02 Type 1126**  
Color RAL 9016  
Traffic white

**[03 Type 1114**  
Color RAL 5020  
Ocean blue



03





### **Type 1210**

- ModernLine aluminium cladding
- Color RAL 7035 Light grey
- Frosted glass with clear strips and integrated stainless-steel appliqué, red stripes RAL 3003 Ruby red
- External handle 7036
- Protective rosette



### **Type 1210**

- ModernLine aluminium cladding
- Color RAL 9001 Cream
- Frosted glass with clear strips and integrated stainless-steel appliqué, red stripes RAL 3003 Ruby red
- External handle 7036
- Protective rosette



### **Type 1210**

- ModernLine aluminium cladding
- Color DB 703
- Frosted glass with clear strips and integrated stainless-steel appliqué, red stripes RAL 3003 Ruby red
- External handle 7036
- Protective rosette



### **Type 1210** **Internal view**

- Pine wood
- Color KI 146 Grey, transparent
- Frosted glass with clear strips and integrated stainless-steel appliqué, red stripes RAL 3003 Ruby red
- Internal knob 2002



### **Type 1211**

- ModernLine aluminium cladding
- Color DB 703
- Frosted glass with clear strips
- External handle 7037
- Protective rosette



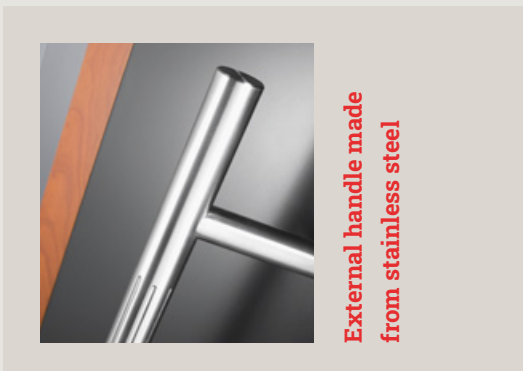
### **Type 1211**

- ModernLine aluminium cladding
- Color RAL 9001 Cream
- Frosted glass with vertical clear strips and horizontal stainless-steel strips
- External handle 7037
- Protective rosette



### **Type 1211**

- ModernLine aluminium cladding
- Color RAL 7035 Light grey
- Frosted glass with vertical clear strips and horizontal stainless-steel strips
- External handle 7037
- Protective rosette



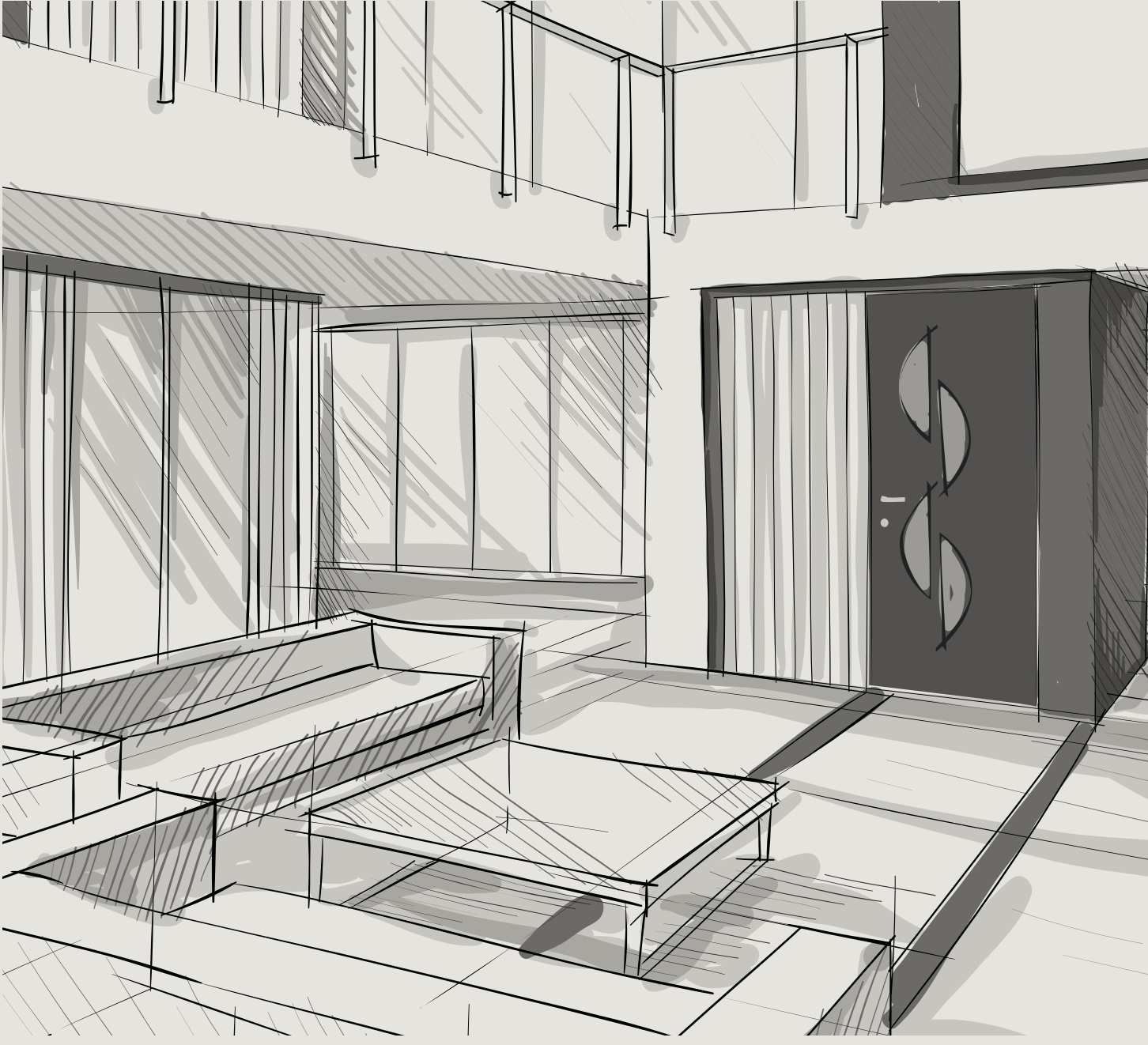
**External handle made from stainless steel**

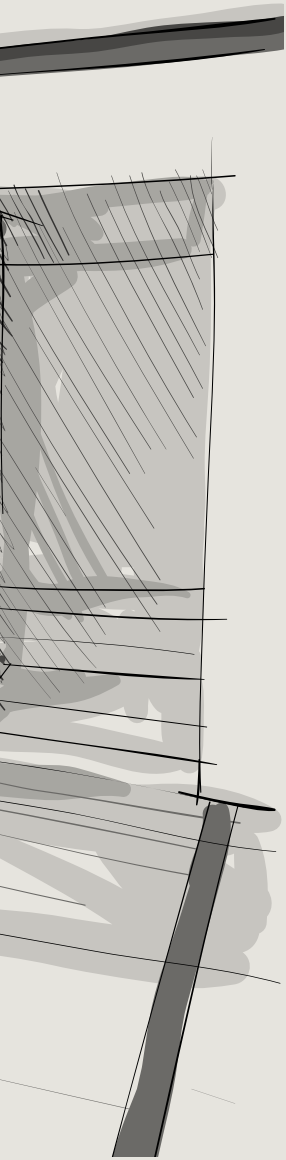


### **Type 1211** **Internal view**

- Pine wood
- Color KI 144 Beige grey, transparent
- Frosted glass with vertical clear strips and horizontal stainless-steel strips
- Internal knob 2003







## UNILUX's door line elegance

**Personal.  
Playful.  
Confident.**

For a designer, a front door may just be the functional connection between inside and outside. But it's actually a lot more. It's your house's business card. The visible access point to your unique, individual home. That's why it can reflect your individuality and show the outside world who you are.

**The ELEGANCE line plays masterfully with geometric shapes by combining aesthetics and dynamics and giving modern architecture a strong, individual character.**

The ELEGANCE line – setting the tone.





**Type 1103**

- LivingLine aluminium cladding
- Colors RAL 7047 Telegrey 4 and RAL 9016 Traffic white
- External handle 7029 indented
- Flush protective rosette



**Type 1103**

- LivingLine aluminium cladding
- Color DB 703
- External handle 7029 indented
- Flush protective rosette
- Stainless-steel base



**Type 1103**

- LivingLine aluminium cladding
- Color RAL 3001 Signal red
- Flush stainless-steel pilaster strip
- External handle 7029 indented
- Flush protective rosette



**Type 1103**  
**Internal view**

- Larch wood
- Color LR 149 American Cherry
- Cross-veneered
- Internal knob 2006



### Type 1111

- ModernLine aluminium cladding
- Colors RAL 3020 Traffic red and RAL 7015 Slate grey
- Glass 845 (Sandblasting on Reflo, one red square)
- External handle 7043 indented
- Square protective rosette
- Stainless-steel base



Sandgestrahltes Glas



### Type 1111

- ModernLine aluminium cladding
- Color RAL 7011 Iron grey
- Clear glass
- External handle 7043 indented
- Square protective rosette
- Stainless-steel base



### Type 1111

- ModernLine aluminium cladding
- Colors RAL 7015 Slate grey and RAL 9016 Traffic white
- Clear glass
- External handle 7043 indented
- Square protective rosette



### Type 1111 Internal view

- Pine wood
- Color KI 148 Cream, transparent
- Glass 845 (Sandblasting on Reflo, one red square)
- Internal knob 2014





### **Type 1116**

- ModernLine aluminium cladding
- Color RAL 3016 Coral red
- Glass 847 (Clear glass with sandblasting and integrated glass rods)
- External handle 7044
- Flush protective rosette
- Stainless-steel base



### **Type 1116**

- ModernLine aluminium cladding
- Color RAL 9007 Grey aluminium
- Clear glass
- External handle 7044
- Flush protective rosette



### **Type 1116**

- ModernLine aluminium cladding
- Color RAL 1013 Oyster white
- Punto glass
- External handle 7044
- Flush protective rosette



### **Type 1116** **Internal view**

- Pine wood
- Color KI 101 Light oak
- Glass 847 (Clear glass with sandblasting and integrated glass rods)
- Internal knob 2013



### **Type 1117**

- ModernLine aluminium cladding
- Colors RAL 7015 Slate grey and RAL 7047 Telegrey 4
- Glass 848 (Float with sandblasting, and six partly frosted glass stones)
- External handle 7048
- Flush protective rosette
- Stainless-steel base



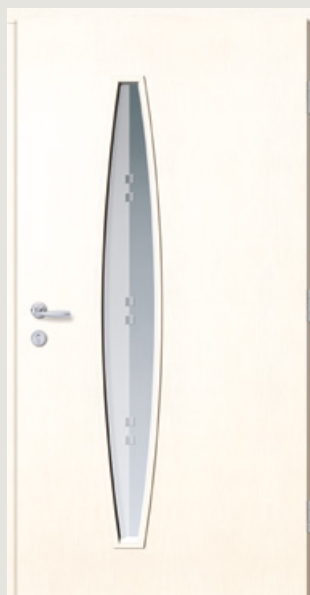
### **Type 1117**

- ModernLine aluminium cladding
- Color DB 703
- Glass 848 (Float with sandblasting, and six partly frosted glass stones)
- External handle 7048
- Flush protective rosette
- Stainless-steel base



### **Type 1117**

- ModernLine aluminium cladding
- Colors RAL 3005 Wine red and RAL 7035 Light grey
- Reflo glass
- External handle 7048
- Flush protective rosette



### **Type 1117** **Internal view**

- Pine wood
- Color KI 118 White, transparent
- Glass 848 (Float with sandblasting, and six partly frosted glass stones)
- Internal knob 2010





### **Type 1118**

- LivingLine aluminium cladding
- Colors RAL 7016 Anthracite grey and RAL 9016 Traffic white
- Glass 849 (Glass with sandblasting pattern and Swarovski stones)
- External handle 7034
- Flush protective rosette
- Stainless-steel base



### **Type 1118**

- LivingLine aluminium cladding
- Colors RAL 3004 Purple red and RAL 9006 White aluminium
- Clear glass
- External handle 7034
- Flush protective rosette



### **Type 1118**

- LivingLine aluminium cladding
- Color RAL 7040 Window grey
- Reflo glass
- External handle 7034
- Flush protective rosette
- Stainless-steel base



### **Type 1118** **Internal view**

- Pine wood
- Color KI 137 transparent matt
- Reflo glass
- Internal knob 2002

01



02



03



**[01 Type 1116**

Color RAL 3004  
Purple red

**[02 Type 1119**

Farben RAL 5020  
Ocean blue

**[03 Type 1111**

Color RAL 7011  
Iron grey





### **Type 1119**

- ModernLine aluminium cladding
- Color Grey, white-pigmented
- Glass 850 (Glass with sandblasting pattern and Swarovski stones)
- External handle 6001
- Flush protective rosette



### **Type 1119**

- ModernLine aluminium cladding  
Color DB 703
- Glass 850 (Glass with sandblasting pattern and Swarovski stones)
- External handle 6001
- Flush protective rosette
- Stainless-steel base



### **Type 1119**

- ModernLine aluminium cladding
- Colors RAL 5020 Ocean blue and RAL 7016 Anthracite grey
- Reflo glass
- External handle 6001
- Flush protective rosette



### **Type 1119** **Internal view**

- Larch wood
- Color LR 141 transparent matt
- Glass 850 (Glass with sandblasting pattern and Swarovski stones)
- Internal knob 2011



### **Type 1120**

- LivingLine aluminium cladding
- Color RAL 9007 Grey aluminium
- Glass 851 (Float with sandblasting strips and three chiselled glass stones)
- External handle 7048
- Flush protective rosette



### **Type 1120**

- LivingLine aluminium cladding
- Color RAL 9016 Traffic white
- Embedded stainless-steel pilaster strip
- Punto glass
- External handle 7048
- Flush protective rosette



### **Type 1120**

- LivingLine aluminium cladding
- Color RAL 3001 Signal red
- Signal red Embedded stainless-steel pilaster strip
- Punto glass
- External handle 7048
- Flush protective rosette
- Stainless-steel base



### **Type 1120** **Internal view**

- Pine wood
- Color KI 145 Cedar
- Punto glass
- Internal knob 2008





### **Type 1121**

- LivingLine aluminium cladding
- Color RAL 1013 Oyster white
- Glass 852 (Sandblasting strips on Reflo and three chiselled stones)
- External handle 6001
- Flush protective rosette



### **Type 1122**

- LivingLine aluminium cladding
- Color DB 703
- Glass 853 (Reflo with sandblasting strips and six chiselled glass stones)
- External handle 7024
- Flush protective rosette
- Stainless-steel base



### **Type 1122**

- LivingLine aluminium cladding
- Color RAL 7044 Silk grey
- Clear glass
- External handle 7024
- Flush protective rosette



### **Type 1121** **Internal view**

- Larch wood
- Color LR 137 transparent matt
- Glass 852 (Sandblasting strips on Reflo and three chiselled stones)
- Internal knob 2010



### **Type 1124**

- LivingLine aluminium cladding
- Color RAL 7016 Anthracite grey
- Glass 855 (Reflo with sandblasting pattern and three glass stones)
- External handle 7029
- Flush protective rosette



### **Type 1124**

- LivingLine aluminium cladding
- Colors RAL 3004 Purple red and RAL 9016 Traffic white
- Flush stainless-steel pilaster strips
- Lava glass
- External handle 7029
- Flush protective rosette
- Stainless-steel base



### **Type 1124**

- LivingLine aluminium cladding
- Colors RAL 7016 Anthracite grey and RAL 7035 Light grey
- Glass 855 (Reflo with sandblasting pattern and three glass stones)
- External handle 7029
- Flush protective rosette



### **Type 1124** **Internal view**

- Larch wood
- Color LR 142 Jatoba
- Glass 855 (Reflo with sandblasting pattern and three glass stones)
- Internal knob 2008





### **Type 1125**

- LivingLine aluminium cladding
- Color RAL 5000 Violet blue
- Flush stainless-steel pilaster strips
- Satinato glass
- External handle 7029 indented
- Flush protective rosette



### **Type 1125**

- LivingLine aluminium cladding
- Color DB 703
- Flush stainless-steel pilaster strips
- Flutes blank matt glass horizontal
- External handle 7029 indented
- Flush protective rosette
- Stainless-steel base



### **Type 1125**

- LivingLine aluminium cladding
- Color RAL 3004 Purple red
- Punto glass
- External handle 7029 indented
- Flush protective rosette
- Stainless-steel base



### **Type 1125** **Internal view**

- Larch wood
- Color LR 144 Beige grey, transparent
- Punto glass
- Internal knob 2006



01

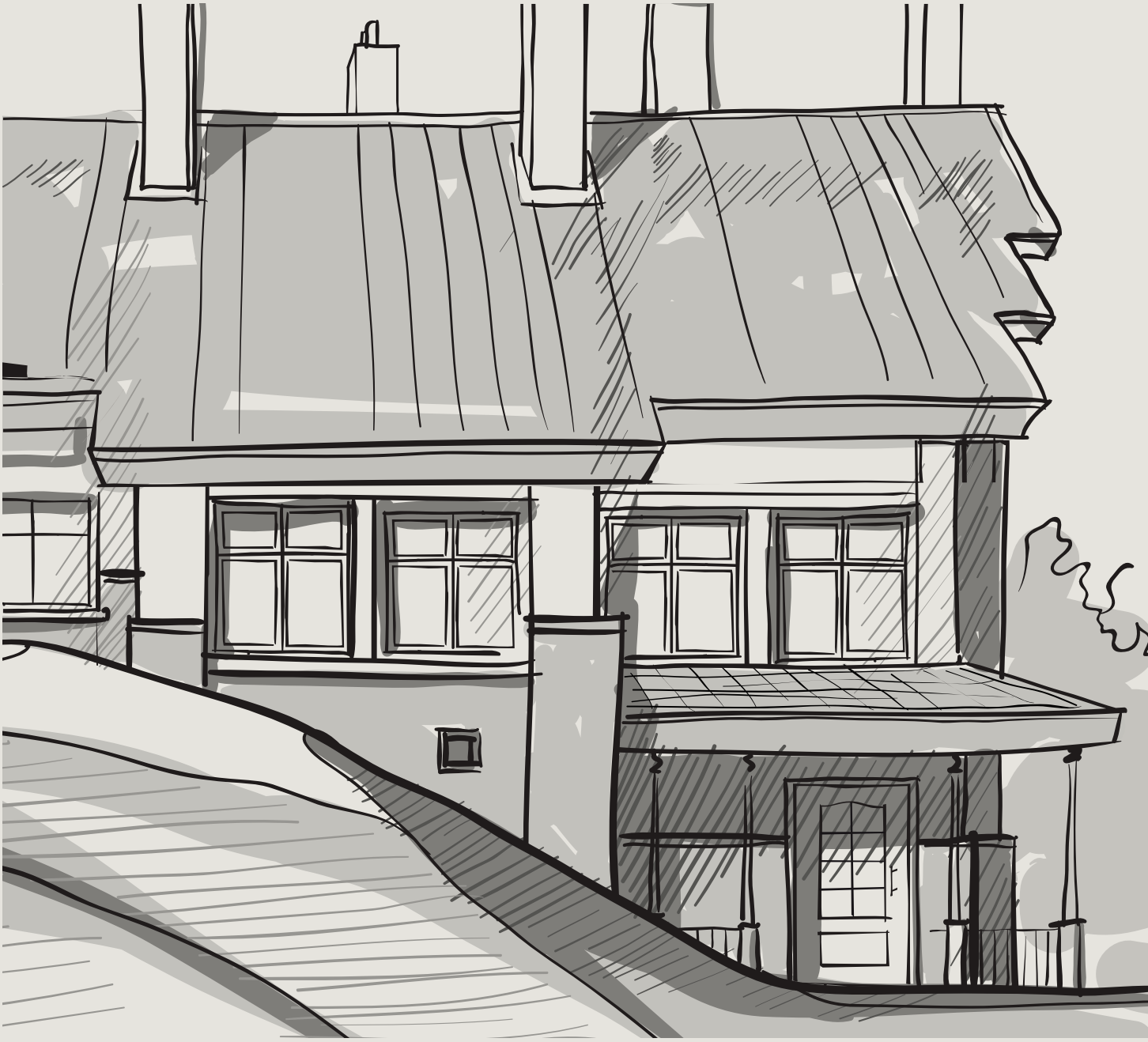


02

[01 **Type 1125**  
Color RAL 3004  
Purple red

[02 **Type 1122**  
Color DB 703





## UNILUX's door line history

# Classic. Balanced. Clear.

There are shapes and colours which transcend fashions. Designs which have proven their worth over decades or even centuries and will continue to do this into the future.

**The HISTORY line stands for a style which blends harmoniously into the overall look. It is intended for renovated older houses, and for tradition-conscious architecture.**

The HISTORY line – As good as before.





### **Type 1203**

- LivingLine aluminium cladding
- Color RAL 7015 Slate grey
- Punto glass
- External handle 7039
- Protective rosette



### **Type 1203**

- LivingLine aluminium cladding
- Color RAL 3004 Purple red and stainless steel
- Vertical Basis Madras glass
- External handle 7039
- Protective rosette



### **Type 1203**

- LivingLine aluminium cladding
- Color RAL 5000 Violet blue and stainless steel
- Reflo glass
- External handle 7039
- Protective rosette



### **Type 1203** **Internal view**

- Larch wood
- Color LR 143 Tobacco
- Reflo glass
- Internal knob 2002



### **Type 1205**

- LivingLine aluminium cladding
- Color RAL 3005 Wine red
- White Gothic glass
- External handle 5000 with cylinder cover



### **Type 1204**

- LivingLine aluminium cladding
- Color RAL 9016 Traffic white
- White Gothic glass
- External handle 5000 with cylinder cover



### **Type 1204**

- LivingLine aluminium cladding
- Color RAL 7016 Anthracite grey
- White Gothic glass
- External handle 5000 with cylinder cover



### **Type 1205** **Internal view**

- Oak wood
- Color EI 150 Golden Oak
- White Gothic glass
- Internal knob 2200







## UNILUX side doors

**Versatile.  
Attractive.  
Reliable.**

No compromises. For its side doors, UNILUX uses the same strict requirements as it does for its aluminium clad wood entry doors. That's why these doors are attractive not only visually, but also from a quality standpoint.

**Get a picture of them: Processing and material are at the same high level you expect from a UNILUX aluminium clad wood entry door. That lets our side doors to blend harmoniously into the overall construction in every way.**

**Quality throughout – UNILUX side doors.**



## As pretty as they are rock-solid.

They look great, and they last. The models in the UNILUX side door series are individual works of art that – matching your architecture – set esthetic accents.

And for the long term, too. High-quality materials and accurate machining are your guarantee that you'll enjoy your UNILUX side door for years to come.



### Recommendation Combination plate with glass

- Color RAL 6009 fir green
- Flutes blank matt glass vertical
- External handle 4000
- Inside: Wood: pine
- Color tone KI 147 Tineo

### Recommendation Complete with plate

- Color RAL 7015 slate gray
- External handle 4001
- Inside: Wood type oak
- Color tone EI 137 transparent matt





### Aluminium clad wood side door handles

The handles for aluminium clad wood side doors are available in white, brown, silver, and steel colors.



**4000**

**4001**

- White
- Silver
- Brown

- White
- Silver
- Brown

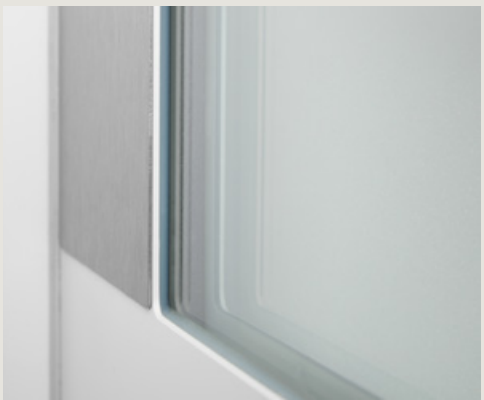
### Recommendation Combination plate with glass

- Color DB 703
- Punto glass
- External handle 4001
- Inside: Wood Pine
- Color tone KI 145 Cedar

### Recommendation Combination plate, glass, muntins

- Color RAL 9016 traffic white
- Clear glass
- External handle 4000
- Inside: Wood type oak
- Color tone EI 150 Golden Oak







Just the way you are

# Customised freedom of design.

How many different tastes are there?

Around 2 million when it comes to models, colors and woods for aluminium clad wood entry doors. Because that's how many combination options you have for your individual UNILUX product.

**See which wood goes best with which color, and which décor matches the aluminium cladding.**

That way, you'll find a front door which is not just "half-decent", but rather perfectly suited to your taste. An individual piece distinct from millions of other doors.

**That's how UNILUX offers individuality works.**

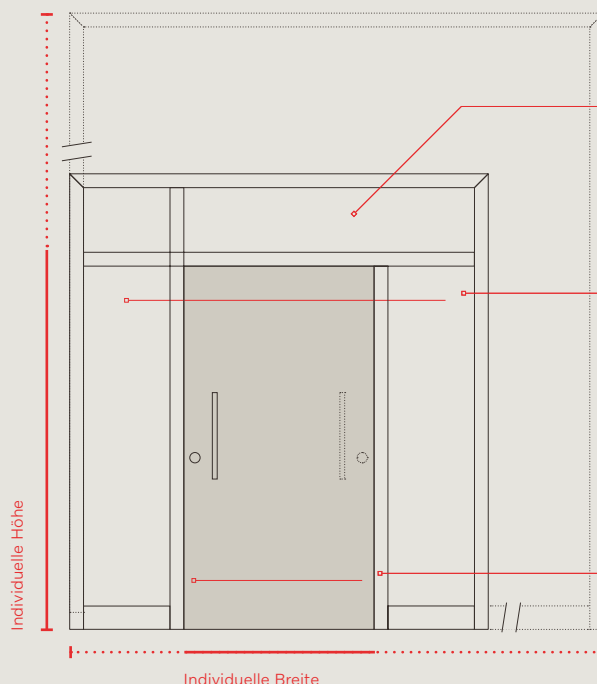


# Freedom of choice in size and shape.

## Fits like a glove

How big should a front door be? Which way should it open? Is it better to have one or two panels? And how much daylight should the door let in? These are questions each person will answer differently.

That's why UNILUX not only offers you customised front doors with your requested lengths and width, but also with the options of your choice. For example, with one or two side panels and transom windows. Elements which accentuate your door and add extra design features.



### Transom windows

For particularly high elements and more light

### Side panels

For particularly wide front door systems:

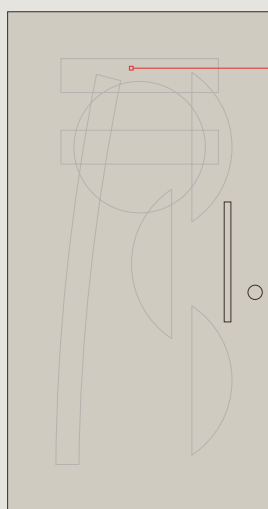
One or two side panels for more light.

### Door hinge

Choose the opening side

## Let there be light

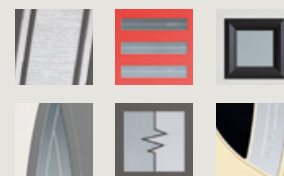
Entry halls don't have to be pitch-dark. Cut-out sections in the front door, glass side panels and transom windows brighten up hallways without the need for light bulbs, making your entrance area cosier. Light supplied for free by nature.

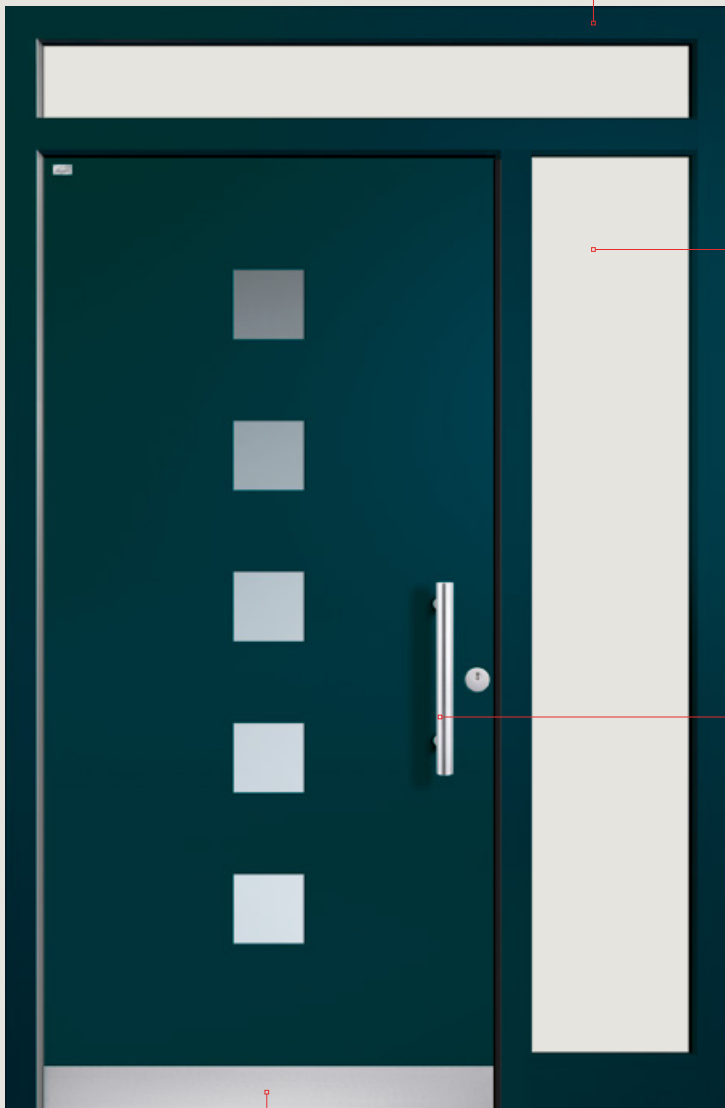


### Cut-out sections

Square or porthole? Symmetrical fields or bold curves? As with all its other features, UNILUX also offers a multitude of cut-out options to choose from.

Variety for more individuality.



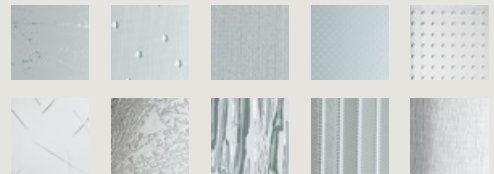


### Chic in a shell

You can even tailor the aluminium cladding to suit your design. Choose from the subtly rounded LivingLine or the purist ModernLine. In over 2,100 colors, or even multi-colored.

### More than just light

Not all glass is the same. Just think how varied this familiar material can be. From simple ornamental glass to striking designer glass.



### Getting a grip on design

Sweeping brass or straight-lined stainless steel? Historically classic or minimalistically modern? Each UNILUX handle is not only a solid piece of handcraft, but also an aesthetic gem allowing you to express your taste and style.



### Base

Many models also have the option of a robust, flush stainless-steel support.



# Freedom to choose materials and colors.



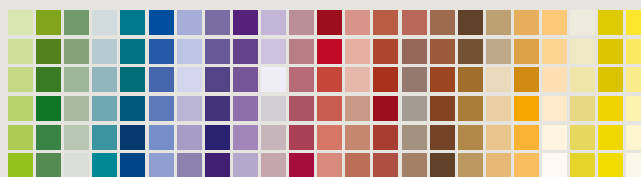
## Exterior: Protective aluminium

Each UNILUX door not only matches your house's architecture, but also its color scheme. Because you can choose from no less than 2,132 colors and shades: RAL colors, NCS colors, DB colors / Eloxal colors, white-pigmented colors and wood effects.

Ask your UNILUX specialty retailer for the color guides, so you can be sure your door is made in your favourite red (or favourite grey or favourite blue etc.).



RAL colors  
Wood effects  
DB & metallic colors  
NCS colors



## Interior: Cosy wood

Individuality not just on the exterior: You can choose from 4 wood types (oak, pine, larch and eucalyptus grandis), 23 glazes (transparent or semitransparent), and around 200 solid RAL colors to design the interior side of your UNILUX door. Ensuring your front door blends harmoniously into the rest of your interior décor.



Choose from the following wood types: Pine, oak, larch and eucalyptus grandis, as well as from 23 transparent or semi-transparent finishes.



Eucalyptus grandis



Larch

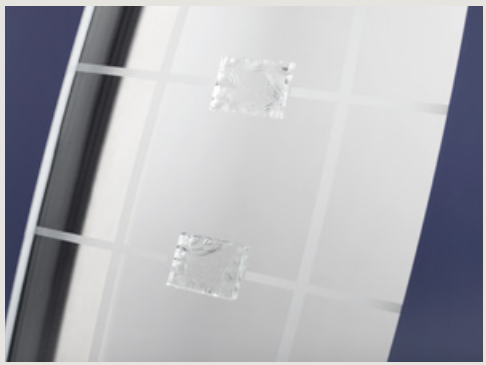
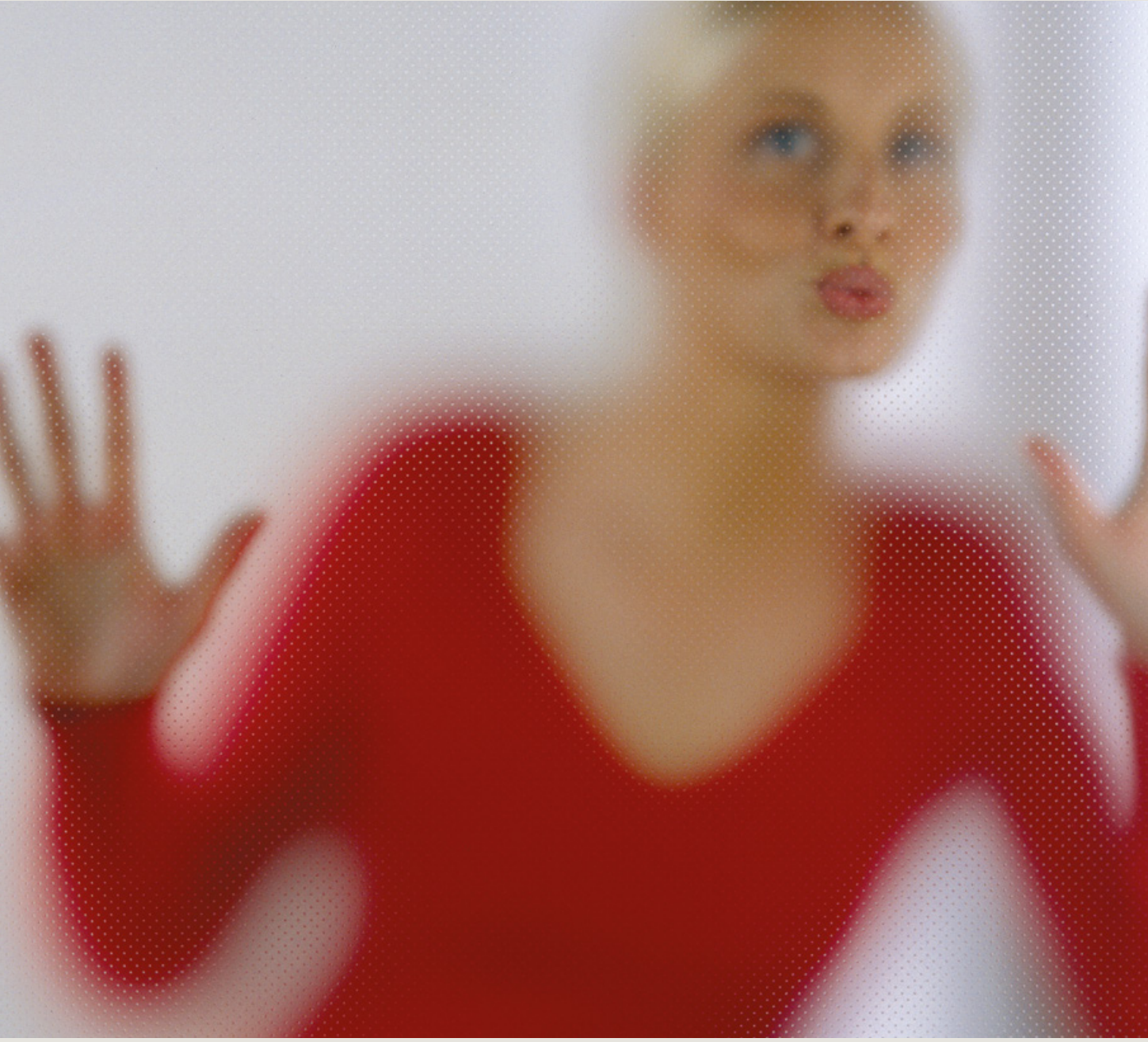


Pine



Oak







**Crystal-clear style**

# **Glass and glass varieties.**

Glass is a special material which gives every door its own individual character. We offer an extensive variety of frontdoor glass types – as well as personalised design suggestions for each door, allowing you to create your very own style even when selecting the glass.

**UNILUX glass impresses customers because it lets natural light in, but prevents outsiders from seeing in. Each of our ornamental and design glass products is proof that beauty and function don't have to be polar opposites.**

**UNILUX** – Glass can be so unique.



## Temptation alert!

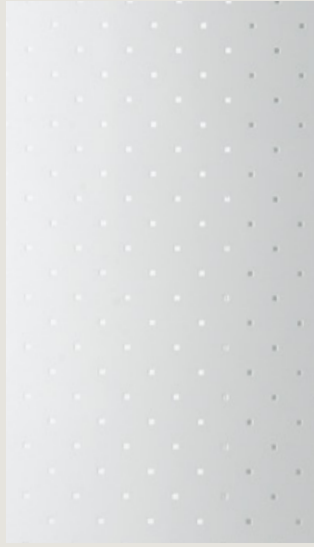
This sample case could cause a commotion. Because it shows you what's possible when it comes to glass. It doesn't always have to "just be smooth". Ornamental and design glass add structure and oomph to a familiar material.

Ask your UNILUX specialty retailer in person. They'll gladly open the UNILUX glass sample case for you.





**Uadi white**



**Pave matt white**

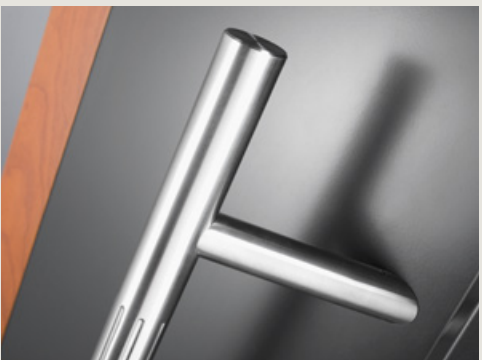


**Punto white**



**Satinato**







A handle on aesthetics

# Hardware.

A door handle must be tough – not everyone will be treating it with kid gloves. Robustness is thus a basic requirement for a good handle. But we're not just interested in the material quality – appearance is also important to us.

**A UNILUX door handle always creates an inviting feel. It complements the architecture, and is the icing on the cake for a model door.**

**UNILUX door handles –**  
nice to hold, impressive to look at.



# Handle models and varieties.

## Matt

**7042**

L 1600 mm



Stainless steel matt

**7043**

L 500 mm



Stainless steel matt

**7049**

L 697 mm



Stainless steel matt

**7048**

L 408 mm



Stainless steel matt

## Groove design

**7047**

L 585 mm



Stainless steel matt

**7034**

L 400 mm



Stainless steel matt

**7033**

L 400 mm



Stainless steel matt



# Spots design

**7045**

L 600 mm



Stainless steel matt

**7046**

L 720 mm



Stainless steel matt

**7030**

L 1000 mm



Stainless steel matt

**7036**

L 600 mm



Stainless steel matt

**7037**

L 1200 mm



Stainless steel matt

**7041**

L 800 mm



Stainless steel matt



# Handle models and varieties.

**7005**

L 480 mm



Stainless steel matt

**7025**

L 500 mm



Stainless steel matt

**7004**

L 504 mm



Stainless steel matt

**7016**

L 515 mm



Stainless steel matt

**7003**

L 600 mm



Stainless steel matt

**7015**

L 650 mm



Stainless steel matt



**7012**

L 330 mm

Stainless steel matt



**7010**

L 330 mm

Stainless steel matt



**7011**

L 330 mm

Stainless steel matt



**7013**

L 335 mm

Stainless steel matt



**7022**

L 400 mm

Stainless steel matt



**7009**

L 380 mm

Stainless steel matt

**7008**

L 2000 mm

Stainless steel matt

**7007**

L 1800 mm

Stainless steel matt

**7002**

L 400 mm



Stainless steel matt

**7017**

L 325 mm



Stainless steel matt

**7090**

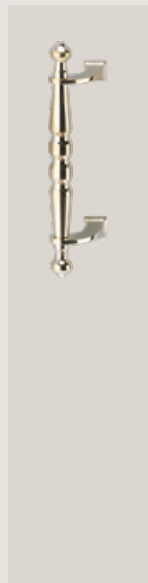
L 1500 mm



Stainless steel matt

**7001**

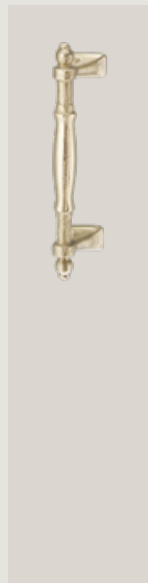
L 300 mm



Brass polished  
Brass antique

**7000**

L 300 mm



Brass polished  
Brass antique



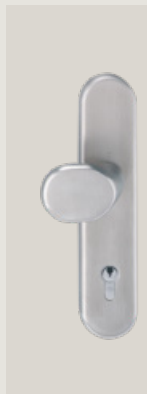
**5000**

Brass polished



**5004**

Brass polished  
Brass bronzed



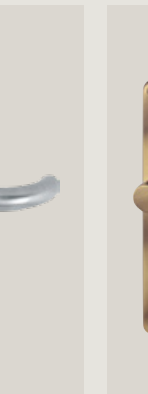
**5003**

Alu White  
Alu Silver  
Alu bronze  
Stainless steel matt  
Brass polished



**5300**

Alu White  
Alu Silver  
Alu bronze  
Stainless steel matt  
Brass polished



**5301**

Brass polished  
Brass bronzed



**6000**

Stainless steel matt

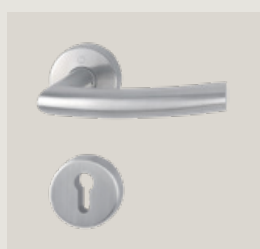


**6001**

Stainless steel matt

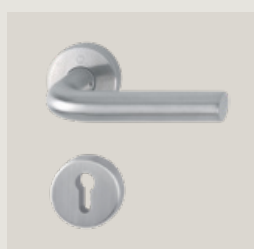


# Handle models and varieties.



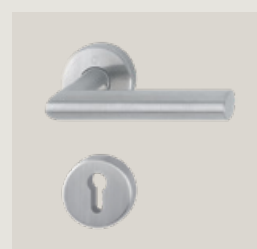
**2000**

■ Stainless steel matt



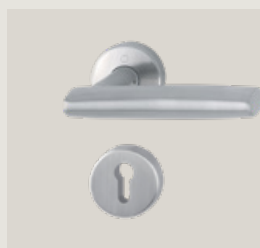
**2001**

■ Stainless steel matt



**2002**

■ Stainless steel matt



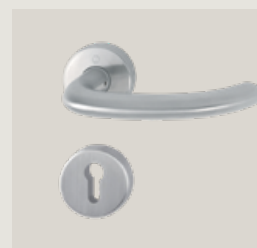
**2006**

■ Stainless steel matt



**2007**

■ Stainless steel matt



**2008**

■ Stainless steel matt



**2013**

■ matt verchromt



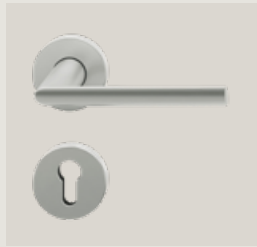
**2014**

■ Stainless steel matt



**2003**

■ Stainless steel matt



**2004**

■ Stainless steel matt



**2005**

■ Stainless steel matt



**2009**

■ Stainless steel matt



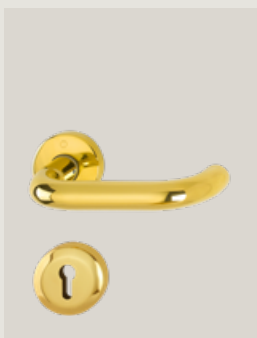
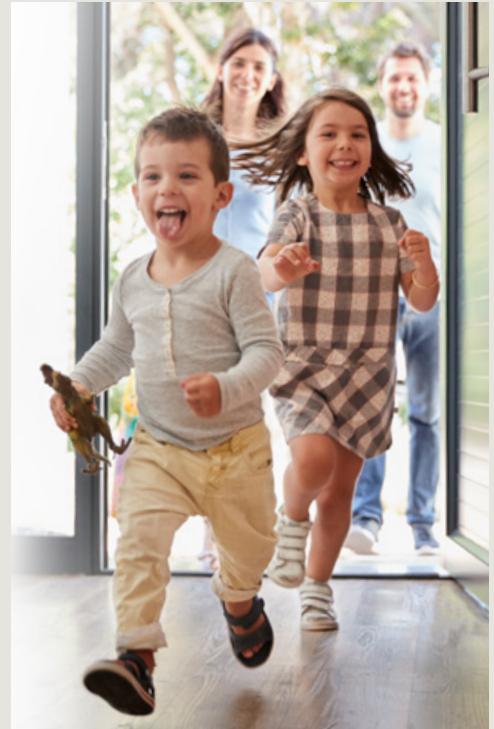
**2010**

■ Chromed



**2011**

■ Chromed



**2015**

■ Brass polished



**2200**

■ Brass polished



**2203**

■ Alu white  
■ Alu silver  
■ Alu bronze  
■ Stainless steel matt



**2204**

■ Brass polished  
■ Brass bronzed







## Security

# Not popular among thieves.

Burglars are always pressed for time. The harder you make things for them, the quicker they give up. That's why UNILUX is not only concerned with design and comfort, but also with safety devices and locks. And this should never be compromised – a belief we take to heart in our daily work.

**Good to know: Even the basic UNILUX front doors have effective safety mechanisms. We also offer additional devices which further enhance the standard safety features.**

That way, UNILUX does its bit towards ensuring uninvited guests are kept out.





### **Solid door structure with an end-to-end lock faceplate**

When it comes to security, the more you have the better. The more solid the door, the more resistant it will be to offenders. With thicknesses of up to 31/8"/79 mm, all models offer robust natural protection.

All our models have an end-to-end metal lock faceplate in the frame. This means that, since the locking mechanism is generally firmly fixed into the closing sections, the potential perpetrator would have to smash the entire plate out of the door frame – involving a lot of extra effort and significantly inhibiting the burglar.

### **Anti-lift device**

All UNILUX front doors come with two anti-lift devices on the hinge side, significantly inhibiting force entries caused by jimmying.

### **Safety glass**

Thanks to a specially developed, highly tear-proof polycarbonate film, the optional safety glass stays intact even if the normal glass cracks – good for you, bad for potential burglars. The UNILUX's anti-vandal P2A safety glass is incidentally certified by the German National Authority on Fire Arms and Ammunition.



### **Door catches**

More effective and more elegant than a door chain.

The optional door catch serves as an additional interior lock, and as a safety catch when the door is easily opened, making it impossible for uninvited guests to get a foot in the door.



### **Invisible door hinges**

Our optional door hinges ensure 100% tightness rebate entry door. And can be loaded up to 120 Kg ( 265 LBS ). The hinges will be integrated hidden. When the door is closed, the door hinges are not visible and form a perfect unit with the front door.



### **Three/four-point locking devices and automatic locking**

Even the standard UNILUX front doors are fitted with an effective three-point locking device with two self-locking bolts. When pulled tightly, these securely and automatically lock the door in two places – at the top and the bottom. The door can be opened normally using the handle or a key.

For more demanding systems, we offer the option of an electronic self closing device which opens your door electronically via remote control or fingerprint.





**Page 12**  
Type 1140



**Page 12**  
Type 1141



**Page 12**  
Type 1143



**Page 13**  
Type 1150



**Page 13**  
Type 1142



**Page 13**  
Type 1148



**Page 14**  
Type 1146



**Page 14**  
Type 1147



**Page 14**  
Type 1149



**Page 15**  
Type 1144



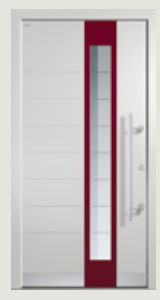
**Page 16**  
Type 1100



**Page 17**  
Type 1101



**Page 18**  
Type 1105



**Page 20**  
Type 1106



**Page 21**  
Type 1107



**Page 22**  
Type 1108



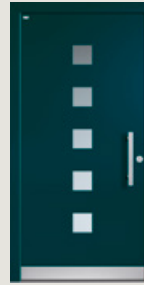
**Page 23**  
Type 1109



**Page 24**  
Type 1110



**Page 26**  
Type 1113



**Page 27**  
Type 1114



**Page 28**  
Type 1115



**Page 29**  
Type 1126



**Page 30**  
Type 1128



**Page 31**  
Type 1201



**Page 32**  
Type 1202



**Page 34**  
Type 1210



**Page 35**  
Type 1211



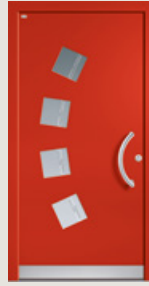
**Page 38**

Type 1103



**Page 39**

Type 1111



**Page 40**

Type 1116



**Page 41**

Type 1117



**Page 42**

Type 1118



**Page 44**

Type 1119



**Page 45**

Type 1120



**Page 46**

Type 1121



**Page 46**

Type 1122



**Page 47**

Type 1124



**Page 48**

Type 1125



**Page 52**

Type 1203



**Page 53**

Type 1204



**Page 53**

Type 1205



**Page 56**

Recommendation 1



**Page 56**

Recommendation 2



**Page 57**

Recommendation 3

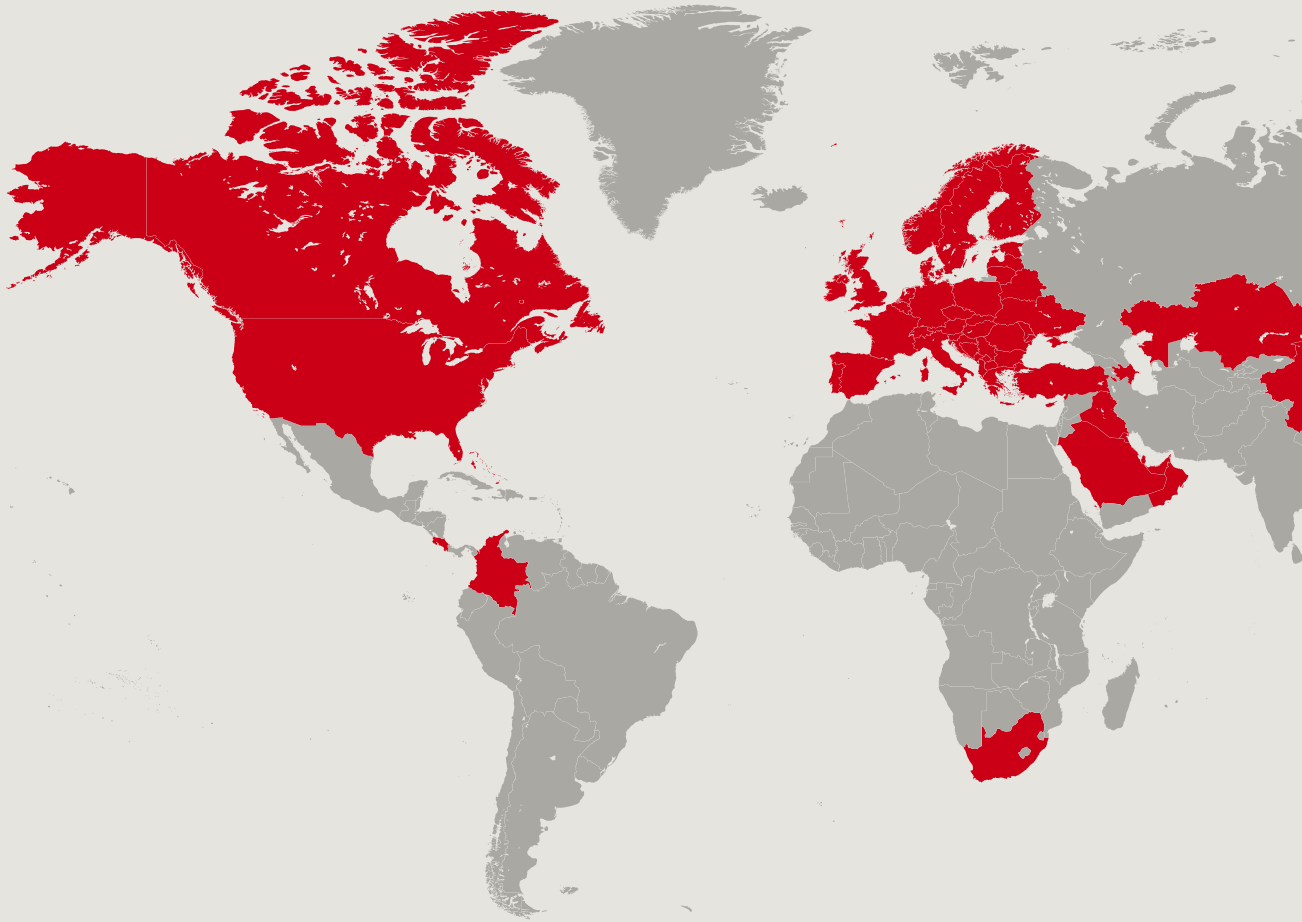


**Page 57**

Recommendation 4



# The reliability of a big name

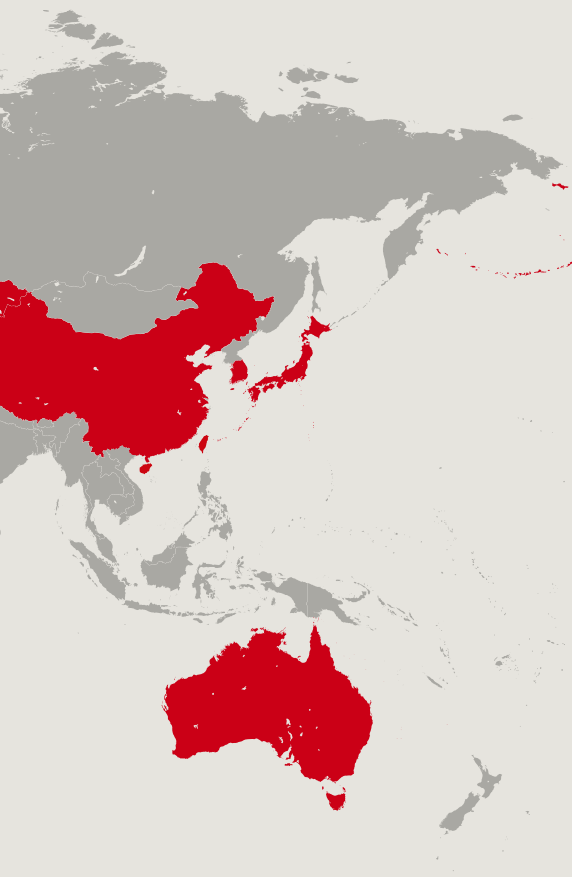


UNILUX ensures award-winning long-term progress - by selecting the right partners and raw-material suppliers, and by being a member of leading institutions and associations:



UNILUX products meet international test and safety standards:





## Company info

### **Publisher**

UNILUX GmbH  
54528 Salmtal / Germany  
Phone +49 6578 189-0  
Fax +49 6578 188-0

info@unilux.de  
[www.unilux.de](http://www.unilux.de)

### **Notes**

The content of this catalogue is not legally binding and may be subject to technical changes as part of further developments or errors in the text, images or descriptions. We only allow images and text material – including excerpts – to be used upon request, and with our express written consent.

The image material used is for illustrative purposes. Differences in colour are unfortunately unavoidable due to printing. The sample illustrations are not to scale.

© 2025, UNILUX GmbH. All rights reserved.



UNILUX headquarters, Salmtal



# Contact:

Phone: +49 (0) 6578 189-0

E-Mail: [info@unilux.de](mailto:info@unilux.de)

Further information on products can  
be found at: [www.unilux.de](http://www.unilux.de)