

The **Ignite**[®] Family of Premium Electric Fireplaces



Experience Better Living.



Ignite
Family



Ignite[®] Family
Absolute comfort and design flexibility.

Available in
30, 36, 42
& 48 inch
widths



Scan for more
information on
dimensions,
accessories,
technical details.



Key Benefits



Classic Hearth

Embrace the timeless charm of a traditional fireplace, creating a warm and inviting focal point for gatherings and relaxation.



True to Life

Experience the epitome of realism with mesmerizing flames, pulsating logs, and cozy warmth.



Sustainable Solution

Merges sustainability and energy efficiency to deliver an environmentally conscious heating and design solution.



Dynamic-Fire Flame Effect

Witness a brand new, remarkably realistic flame effect, patented by Dimplex.



Rhythmic Inner Glow Logs

Features quick connect, moveable logs enhanced with inner glow technology that pulse in rhythm with the dancing flames.



Comfort\$aver Heating

On-demand supplemental heating for up to 1,000 sq ft. with the option to turn the heat off and enjoy the flames year-round.



Crackling Sound Effects

Enhance your sensory journey with the soothing sound of a crackling natural wood fire.



Tumbled glass



Rhythmic inner glow logs



Black shattered glass

NEW
Dynamic-Fire flame effect

NEW
Quick connect moveable logs with tumbled glass embers

Total Control

Harness total control of your fireplace with the Dimplex Flame Connect App. You can also use the included wall-mounted remote control or 3-button control panel on the fireplace.



Available in
50, 60, 74, 88
& 100 inch
widths



Scan for more
information on
dimensions,
accessories,
technical details.

Key Benefits

Modern Elegance

Sleek design and cutting-edge technology create a focal point that exudes modernism.



Adaptable Design

Freedom to fit your vision with five installation choices: front-facing, left corner, right-corner, bay, or create a sleek modular unit.



Natural Hearth

Delivers the most authentic flame and log combination for an unmatched and lifelike fire experience.



Edgeless design, less frame, more flame

Comfort\$aver® heating system

NEW
Dynamic-Fire flame effect

Smart self-diagnostics

3-button control panel



NEW

Quick connect moveable logs with tumbled glass embers

Mirrored glass backer to enhance flame effect

3 flame speeds

16-15/16" (42.9 cm) viewing height



Tumbled glass



Rhythmic inner glow logs



Black shattered glass



Dynamic-Fire Flame Effect

Witness a brand new, remarkably realistic flame effect, patented by Dimplex.



Rhythmic Inner Glow Logs

Features quick connect, moveable logs enhanced with inner glow technology that pulse in rhythm with the dancing flames.



Comfort\$aver® Heating

On-demand supplemental heating for up to 1,000 sq. ft. with the option to turn the heat off and enjoy flames year-round.



Crackling Sound Effects

Enhance your sensory journey with the soothing sound of a crackling natural wood fire.

Total Control

Harness total control of your fireplace with the Dimplex Flame Connect App. You can also use the included wall-mounted remote control or 3-button control panel on the fireplace.



Available in
50, 60, 74
& 100 inch
widths



Scan for more
information on
dimensions,
accessories,
technical details.





Key Benefits



Comfort & Aesthetic

Stunning flames, ember bed and lifelike driftwood work together to create an authentic fire experience.



Energy Efficiency

Patented Comfort\$aver® technology reduces energy usage while keeping the room temperature stable and cozy.



Complete Personalization

Endless personalization of the flame speed, color and ember bed to make this fireplace unique to you.



Multi-Fire® Flame Effect

Patented Dimplex flame effect produces vivid, realistic flames that ignite the senses.



Comfort\$aver® Heating

On-demand supplemental heating for up to 1,000 sq. ft. with the option to turn the heat off and enjoy flames year-round.



Seamless Installation

Fully recesses into a 2x6 wall with or without trim for an edgeless design.



Smart Self-Diagnostics

Have peace of mind with the self-diagnosing module that makes fixing issues simple, backed by a 5-year warranty.

Edgeless design, less frame, more flame

5 flame speeds

Comfort\$aver® heating system

Multi-Fire® flame effect

Ambient light sensor

Smart self-diagnostics

Hidden touch controls



Large and medium acrylic crystals, tumbled glass embers and driftwood

Mirrored glass backer to enhance flame effect

11-3/4" (29.7 cm) viewing height



Tumbled glass



Lifelike driftwood



Acrylic crystals



Total Control

For ultimate control of your fireplace, use the Dimplex Flame Connect App. You can also use the included remote control or hidden control panel.

Available
in 50, 60,
74, 88 &
100 inch
widths



Scan for more
information on
dimensions,
accessories,
technical details.

IGNITE BOLD



Key Benefits



A Bold Statement

Incredible depth, unparalleled flames and an increased viewing height create a focal piece in your space.



Energy Efficiency

Patented Comfort.\$aver® technology reduces energy usage while keeping the room temperature stable and cozy.



Design Versatility

Install the fireplace your way to fit your space. Front-facing, right or left corner and bay, all in one box.

Customize fireplace with media accent color and top light

Adjustable brightness

Air circulation mode

Comfort.\$aver® heating system

Multi-Fire® flame effect

Smart self-diagnostics

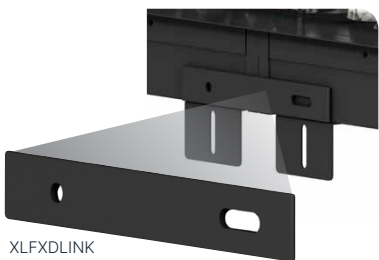
Hidden touch controls



Small and large acrylic crystals with natural-looking driftwood

Mirrored glass backer to enhance flame effect

16-1/8" (40.9 cm) viewing height



XLFXDLINK

To get a dramatically oversized fireplace that makes a lasting impression, use the linking kit and combine multiple units in a series to achieve your desired length.



Multi-Fire® Flame Effect

Patented Dimplex flame effect produces vivid, realistic flames that ignite the senses.



Comfort.\$aver® Heating

On-demand supplemental heating for up to 1,000 sq. ft. with the option to turn the heat off and enjoy flames year-round.



Enhanced Personalization

Experience your fireplace, your way with endless options of flame and ember bed colors and custom flame speeds.



Smart Self-Diagnostics

Have peace of mind with the self-diagnosing module that makes fixing issues simple, backed by a 5-year warranty.



Total Control

For ultimate control of your fireplace, use the Dimplex Flame Connect App. You can also use the included remote control or hidden control panel.

Available in
50, 60, 74
& 100 inch
widths



Scan for more
information on
dimensions,
accessories,
technical details.

IGNITE XL[®]

Key Benefits



Classic Charm

Flickering flames and acrylic crystals create a stunning feature while providing ambience to any room.



Energy Efficiency

Enjoy perfect comfort with the exclusive Comfort\$aver® technology, reducing energy usage while keeping the room temperate stable.



Simple Comfort

Instantly transform your space into a cozy retreat with simple controls and zero hassles.



Multi-Fire® Flame Effect

Patented Dimplex flame effect produces vivid, realistic flames that ignite the senses.



Comfort\$aver® Heating

On-demand supplemental heating for up to 1,000 sq. ft. with the option to turn the heat off and enjoy flames year-round.



Seamless Installation

Fully recess into a 2x6 wall with or without trim for an edgeless design.



Worry-Free Operation

With little to no maintenance and backed by a 5-year warranty, all you have to do is enjoy.

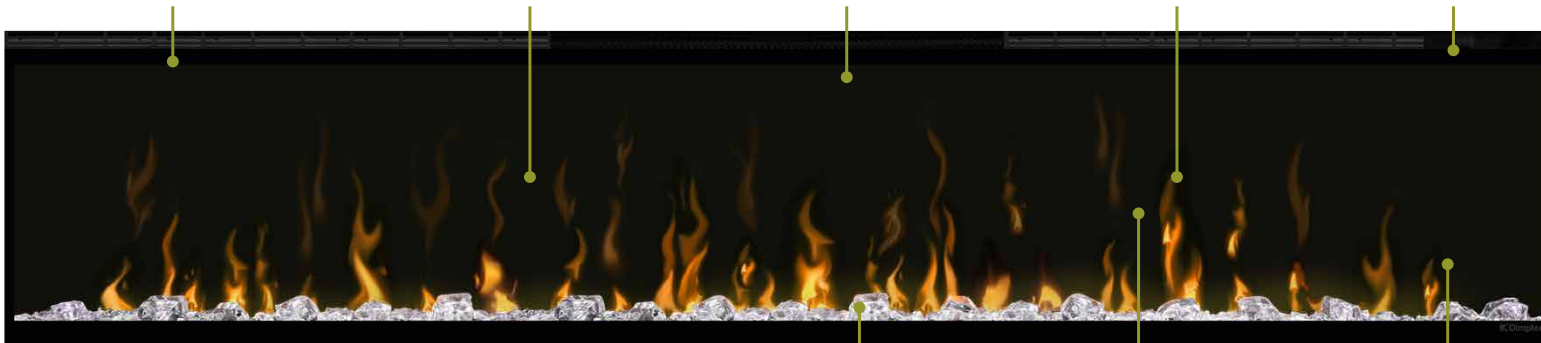
Edgeless design, less frame, more flame

Adjustable brightness

Comfort\$aver® heating system

Multi-Fire® flame effect

Hidden touch controls



Large and medium acrylic crystals

Mirrored glass backer to enhance flame effect

11-3/4" (29.7 cm) viewing height



Driftwood and River Rock Ember Bed Kit



Ignite XL Trim Kit



Easy Control

Use the included remote or hidden touch controls to easily operate your fireplace.

Ignite Series Comparison



Series	Ignite® Aspiré	Ignite® Ultra	Ignite® Bold	Ignite® Evolve	Ignite XL®
Size	30", 36", 42", 48"	50", 60", 74", 88", 100"	50", 60", 74", 88", 100"	50", 60", 74", 100"	50", 60", 74", 100"
Ember Bed	Quick Connect Logs with Tumbled Glass Embers	Quick Connect Logs with Tumbled Glass Embers	Lifelike Driftwood with Acrylic Crystals	Tumbled Glass, Lifelike Driftwood, Acrylic Crystals	Acrylic Crystals
Ember Bed Themes Brightness	3 Themes Adjustable Brightness	3 Themes Adjustable Brightness	8 Themes Adjustable Brightness	8 Themes Adjustable Brightness	8 Themes Adjustable Brightness
Flame Color Themes Brightness	9 Themes Adjustable Brightness	9 Themes Adjustable Brightness	7 Themes Adjustable Brightness	7 Themes Adjustable Brightness	1 Theme
Top Light	•	•	•	•	•
Flame Technology	Optiflame®	Optiflame®	Optiflame®	Optiflame®	Optiflame®
Flame Effect	Dynamic-Fire	Dynamic-Fire	Multi-Fire®	Multi-Fire®	Multi-Fire®
Flame Speed	4	4	5	5	
Flame Only Mode	•	•	•	•	•
Heater Only Mode	•	•	•	•	•
Air Circulation	•	•	•	•	
Heat Operation	ComfortSaver® Heating	ComfortSaver® Heating	ComfortSaver® Heating	ComfortSaver® Heating	ComfortSaver® Heating
Heating Range	1000 sq. ft.	1000 sq. ft.	1000 sq. ft.	1000 sq. ft.	1000 sq. ft.
Heat Disable	Onboard controls or Hardware disconnect				
Built-in Thermostat	•	•	•	•	•
Wiring Type	Hardwire (Optional 120V Plug Kit Included)	Hardwire (Optional 120V Plug Kit Included)	Hardwire (120V Plug Kit Sold Separately)	Hardwire (Optional 120V Plug Kit Included)	Hardwire (Optional 120V Plug Kit Included)
Volts	120 240	120 240	120 240	120 240	120 240
Watts	1500 2500	1500 2500	1500 2500	1500 2500	1500 2500
BTU	5118 8530	5118 8530	5118 8530	5118 8530	5118 8530
Operating Controls	Onboard Remote App	Onboard Remote App	Hidden touch controls Remote App	Hidden touch controls Remote App	Hidden touch controls Remote
Flame Connect App	•	•	•	•	
Self Diagnostics	•	•	•	•	
Display			•	•	•
Timer	•	•	•	•	•
Installation Options	Fully recessed front, right/left corner, and bay installations.	Fully recessed-front, right/left corner and bay. Linking Kit - to connect multiple units	Fully recessed-front, right/left corner and bay. Linking Kit - to connect multiple units	Fully recessed-2x6, Partially recessed-2x4 with trim-kit accessory	Fully recessed-2x6, Partially recessed-2x4 with trim-kit accessory
Optional Accessories	Trim Kit. Installation kit required for corner and bay units.		Modular Linking Kit, Plug Kit	Trim Kit	Driftwood & River Rock Kit, Trim Kit
Warranty	5-year parts and service	5-year parts and service	5-year parts and service	5-year parts and service	5-year parts and service
Dimensions (WxHxD)	(Based on Front) ASP30 (500003060) 30-9/16 × 37-1/2 × 17-1/2 in 77.7 × 95.3 × 44.5 cm ASP36 (500003049) 36-9/16 × 43-1/2 × 17-1/2 in 92.9 × 110.5 × 44.5 cm ASP42 (500003051) 42-5/8 × 46-1/2 × 17-1/2 in 108.2 × 118.1 × 44.5 cm ASP48 (500003050) 48-15/16 × 49-1/2 × 17-1/2 in 124.3 × 125.8 × 44.5 cm	(Based on Bay, without Trim) ULT50 (500003149) 50-9/16 × 27-1/2 × 14-1/2 in 128.5 × 69.9 × 36.9 cm ULT60 (500003151) 60-9/16 × 27-1/2 × 14-1/2 in 153.9 × 69.9 × 36.9 cm ULT74 (500003152) 74-9/16 × 27-1/2 × 14-1/2 in 189.5 × 69.9 × 36.9 cm ULT88 (500003154) 88-9/16 × 27-1/2 × 14-1/2 in 225 × 69.9 × 36.9 cm ULT100 (500003155) 100-9/16 × 27-1/2 × 14-1/2 in 255.5 × 69.9 × 36.9 cm	(Based on Bay, without Trim) XLF5017-XD 49 × 23-7/8 × 11-3/8 in 124.6 × 60.7 × 28.9 cm XLF6017-XD 61-5/8 × 23-7/8 × 11-3/8 in 156.5 × 60.7 × 28.9 cm XLF7417-XD 74-1/8 × 23-7/8 × 11-3/8 in 188.3 × 60.7 × 28.9 cm XLF8817-XD 86-15/16 × 23-7/8 × 11-3/8 in 220.2 × 60.7 × 28.9 cm XLF10017-XD 99-1/4 × 23-7/8 × 11-3/8 in 252.1 × 60.7 × 28.9 cm	(with Trim) EVO50 (500002573) 51-1/2 × 16-1/2 × 5-3/4 in 130.6 × 41.9 × 14.6 cm EVO60 (500002574) 61-1/4 × 16-1/2 × 5-3/4 in 156.0 × 41.9 × 14.6 cm EVO74 (500002608) 75-1/2 × 16-1/2 × 5-3/4 in 194.1 × 41.9 × 14.9 cm EVO100 (500002563) 101-1/2 × 16-1/2 × 5-3/4 in 257.6 × 41.9 × 14.6 cm	(with Trim) XLF50 51-1/2 × 16-1/2 × 5-3/4 in 130.6 × 41.9 × 14.6 cm XLF60 61-1/4 × 16-1/2 × 5-3/4 in 156.0 × 41.9 × 14.6 cm XLF74 75-1/2 × 16-1/2 × 5-3/4 in 194.1 × 41.9 × 14.9 cm XLF100 101-1/2 × 16-1/2 × 5-3/4 in 257.6 × 41.9 × 14.6 cm

© Dimplex All rights reserved. Material contained in this publication may not be reproduced in whole or in part, without prior permission in writing of Dimplex. Dimplex is a Registered Trade Mark in North America. All Dimplex flame effects are protected by multiple worldwide patents. All the products shown in this sell sheet are protected by intellectual property rights owned by Dimplex or members of the Glen Dimplex Group on an international basis. The Glen Dimplex Group of Companies will actively protect these rights. Specifications, finishes and dimensions are subject to change. Limited warranty. LI-1070-R03-100124