



Concrete Block Shapes & Sizes

The **York** Advantage

Quality

Using quality materials is important with any product, but even more so in basic building materials. That's why York Building Products' gray block is manufactured with exacting standards conforming to the American Society for Testing and Materials (ASTM). Our block meets or exceeds the ASTM C90 standard.

Selection

York Building Products produces one of the largest selections of gray block in normal and lightweight units in the eastern United States. With blocks available across hundreds of shapes and sizes in inventory, we are ready to meet the demand of the largest projects. And, our fleet of trucks can deliver block right to your jobsite...with boom trucks, utility trucks, or tractor trailers.

Distribution

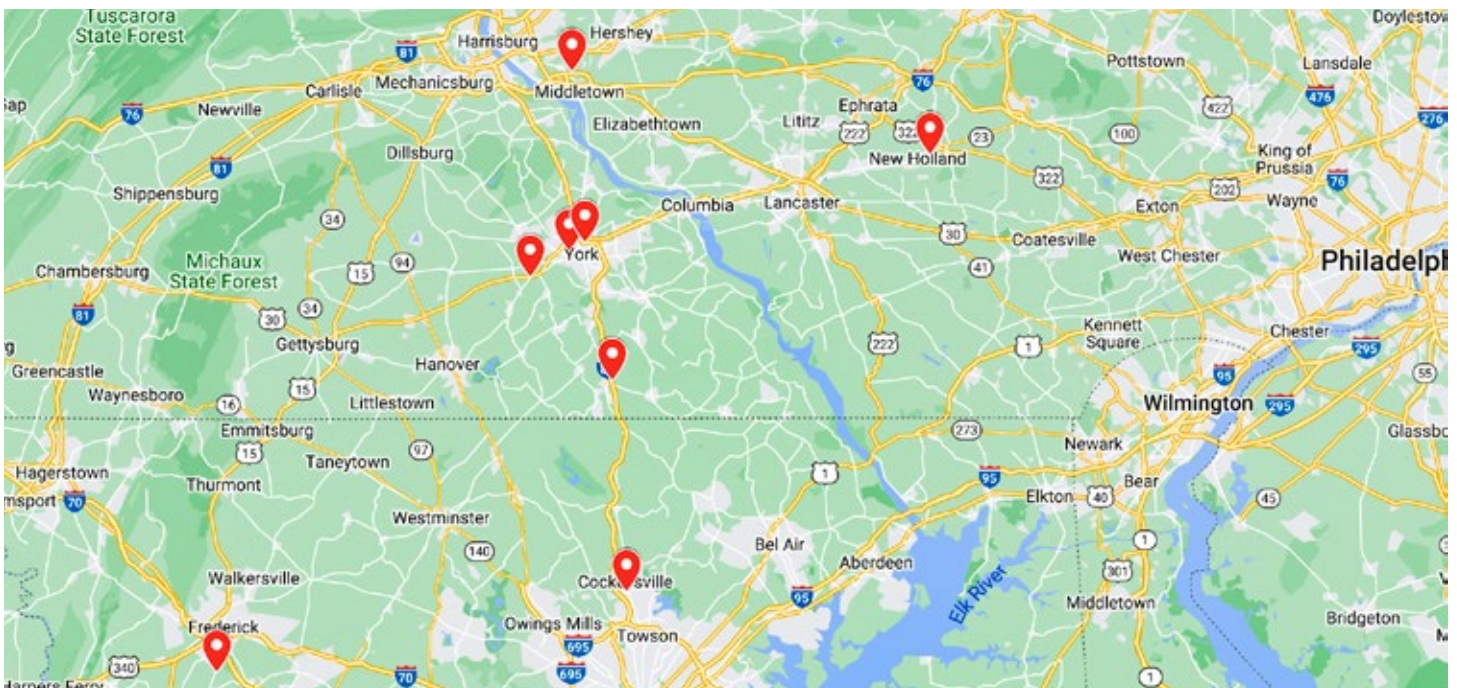
Our products are installed throughout the eastern USA, where we utilize a large network of authorized dealers.

Contents

- 3** Other Masonry Products
- 4** Manufacturing Facilities
- 5** Shape Details
- 6** 2, 3 and 4-Inch Units
- 7** 6-Inch Units
- 8** 8-Inch Units
- 11** 10-Inch Units
- 13** 12-Inch Units
- 15** 12, 14 and 16-Inch units

Production

Our production facilities are conveniently located throughout south central PA and northern MD.



York Building Products

More Than Just Standard Concrete Block...



Concrete Lintels

Our lintel division has been manufacturing lintels for over 40 years. Our reputation for tight tolerances comes from years of production experience in a quality-controlled facility. We produce both standard and U-lintels in a full range of sizes.



Architectural Masonry Units

Architectural masonry units provide architects and designers with a multitude of design options. Our wide variety of colors and textures can be combined to enhance the design of any structure.



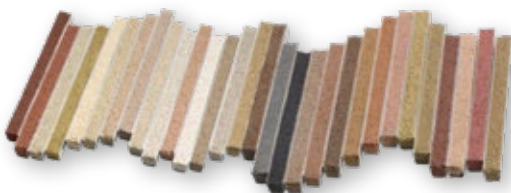
Sound Control Units

We manufacture Soundblox® units for structural and load-bearing masonry units, where additional sound control is needed.



Pre-Insulated Block

Our insulated blocks contain molded insulation inserts to increase R-values. We manufacture several types, depending upon the required R-value.



Colored Cements for Masonry

Our WORKRITE® colored mortars are available in 60 standard colors in Type N and Type S. 16 colors are stocked, and special colors can be custom-matched for a project.



Building and Construction Materials

Our building materials division has an extensive inventory of products to meet the needs of masons, concreters, general contractors, landscapers, site contractors and homeowners. We have multiple locations throughout our service area to better serve your needs.

Manufacturing Facilities

C Cockeysville, MD



10111 Beaver Dam Road
Cockeysville, MD 21030
Phone: **410.666.2350**

M Middletown, PA



325 Fulling Mill Road
Middletown, PA 17057
Phone: **717.944.1488**

F Frederick, MD



4126 Buckeystown Pike
Frederick, MD 21704
Phone: **301.698.4000**

N New Holland, PA



828 East Earl Road
New Holland, PA 17557
Phone: **717.354.1200**

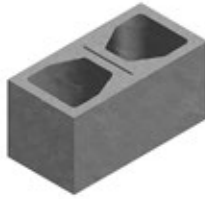
L Loucks Mill, PA



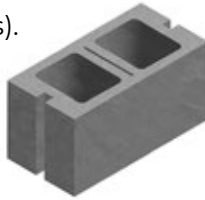
915 Loucks Mill Road
York, PA 17402
Phone: **717.845.5333**

Shape Details

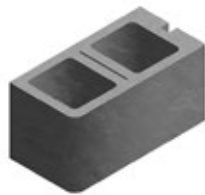
Pier = Smooth end (no ears or sash groove).



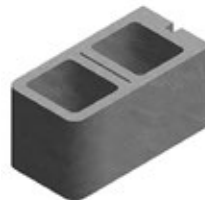
Sash = Unit includes a sash groove on end(s). Also called “jamb” block.



Bullnose = Rounded edges.



Single Bullnose
Corner
(Bullnose on one
bed depth edge)



Double Bullnose
Corner
(Bullnose on both
bed depth edges)

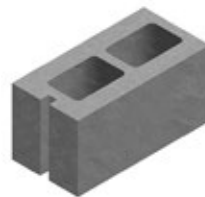


Single Bullnose
Pier
(Bullnose on both
longitudinal edges)

FHA/Cap, Semi-Solid,
Fire-rated.



Hollow FHA/Cap

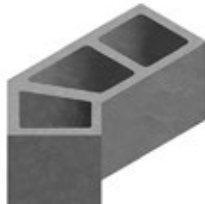


Semi-Solid Corner Sash



Hollow 3 Hour Fire
Rated

45-degree angle = For use on angled
wall envelopes, such as bay windows..

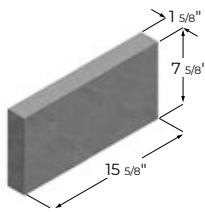


A Note On Block Weights:

Concrete gray block is produced primarily from Portland cement, graded aggregates and water, which is then mixed, molded, cured, stored and delivered to a wide range of end users. Different aggregates mixed in the “batch” determine the type and ultimately the weight, compressive strength and a variety of other factors important to engineers, architects and contractors. Locally, York Building Products’ own quarries and mining operations supply our plants with the necessary aggregates for the manufacture of concrete gray block.

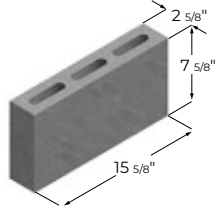
Currently, our gray units are manufactured as normal weight and lightweight block. Both types of block satisfy the requirements of ASTM C-90 for load-bearing concrete units and, where applicable, meet the requirements of ASTM C-331 for lightweight units.

2, 3 and 4-inch Units



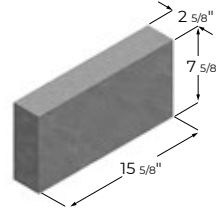
2 x 8 x 16
Solid Pier

C F L M N



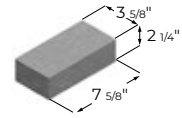
3 x 8 x 16
Hollow Pier

F L M N



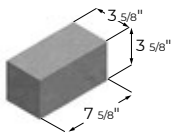
3 x 8 x 16
Solid Pier

C F L M N



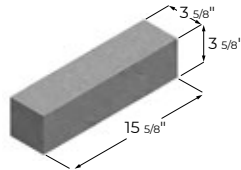
4 x 2 1/4 x 8
Concrete Brick

C F L M N



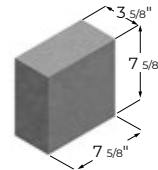
4 x 4 x 8
Solid Pier

M N



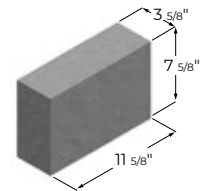
4 x 4 x 16
Solid Pier

C F L M N



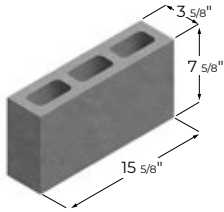
4 x 8 x 8
Solid Pier

M N



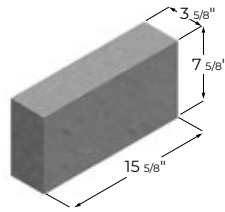
4 x 8 x 12
Solid Pier

C F L M N



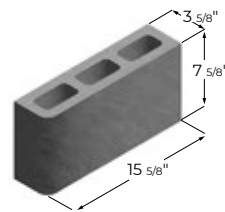
4 x 8 x 16
Hollow Pier

C F L M N



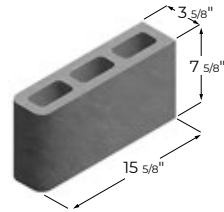
4 x 8 x 16
Solid Pier

C F L M N



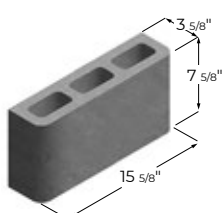
4 x 8 x 16
Hollow Single Bullnose Corner

C F L M N



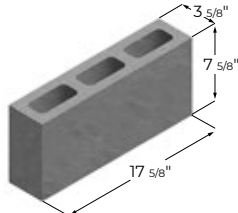
4 x 8 x 16
Hollow Double Bullnose
Corner

F L M N



4 x 8 x 16
Hollow Single Bullnose Pier

F L M N



4 x 8 x 18
Hollow Pier

M N

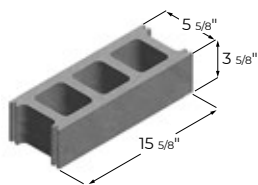
C Cockeysville **F** Frederick **L** Loucks Mill **M** Middletown **N** New Holland

See Your Sales Representative To Confirm These Details:

- Cube counts, weights & configuration can vary by plant location.
- Not all items shown are in-stock at every location.

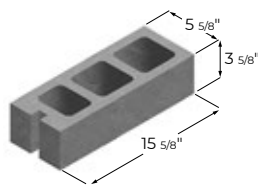
- Shown are the most popular units. Additional configurations may be available.
- Normal or lightweight products are available (but not stocked) in all shapes and sizes.

6-inch Units



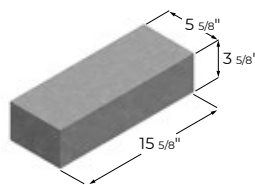
6 x 4 x 16
Hollow Stretcher

C F L M



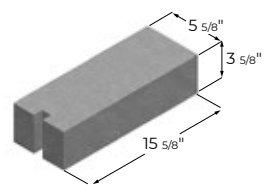
6 x 4 x 16
Hollow Corner Sash

C F L M N



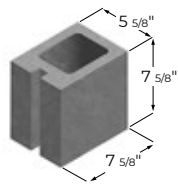
6 x 4 x 16
Solid Pier

C F L M N



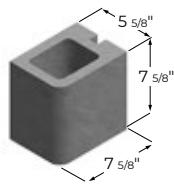
6 x 4 x 16
Solid Corner Sash

L M N



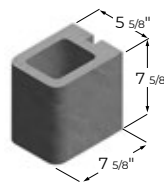
6 x 8 x 8
Hollow Corner Sash

C F M N



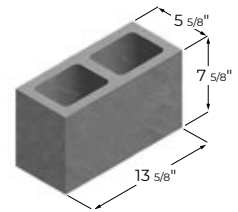
6 x 8 x 8
Hollow Single Bullnose
Corner Sash

C F M N



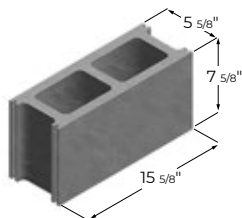
6 x 8 x 8
Hollow Double Bullnose
Corner Sash

F M N



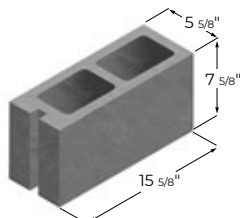
6 x 8 x 14
Hollow Pier

C F L M N



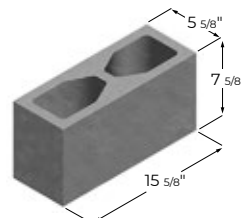
6 x 8 x 16
Hollow Stretcher

L M N



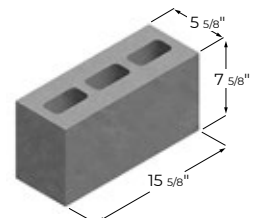
6 x 8 x 16
Hollow Corner Sash

C F L M N



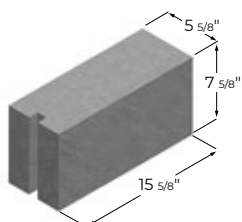
6 x 8 x 16
Hollow Pier

C F L M N



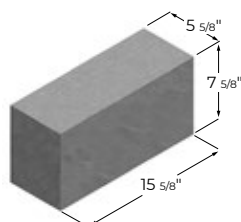
6 x 8 x 16
Semi Solid

F L M N



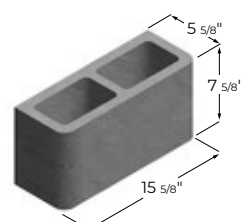
6 x 8 x 16
Solid Corner Sash

L M N



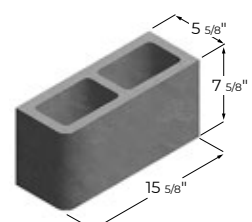
6 x 8 x 16
Solid Pier

C F L M N



6 x 8 x 16
Hollow Single Bullnose Pier

F L M N



6 x 8 x 16
Hollow Single Bullnose Corner

C F L M N

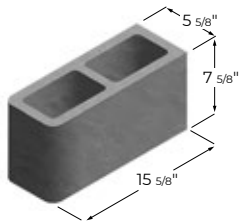
C Cockeysville **F** Frederick **L** Loucks Mill **M** Middletown **N** New Holland

See Your Sales Representative To Confirm These Details:

- Cube counts, weights & configuration can vary by plant location.
- Not all items shown are in-stock at every location.

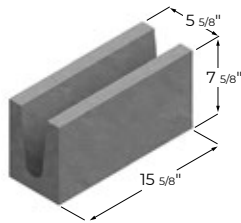
- Shown are the most popular units. Additional configurations may be available.
- Normal or lightweight products are available (but not stocked) in all shapes and sizes.

6-inch Units



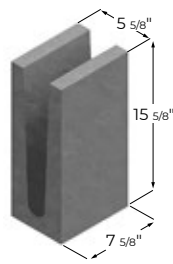
6 x 8 x 16
Hollow Double Bullnose Corner

C F L M N



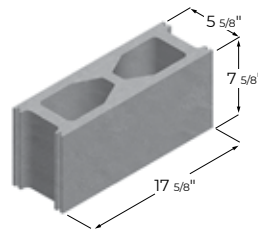
6 x 8 x 16
Solid-Bottom Bond Beam

F L M N



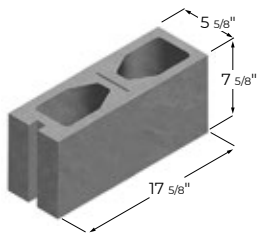
6 x 16 x 8
Bond Beam Lintel

M N



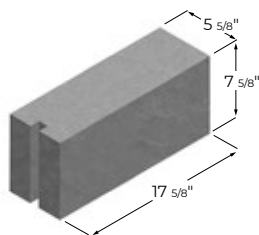
6 x 8 x 18
Hollow Stretcher

C M N



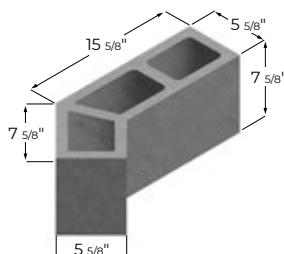
6 x 8 x 18
Hollow Corner Sash

C L M N



6 x 8 x 18
Solid Corner Sash

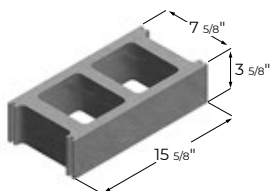
M



6 x 8 x 21
45 Degree Angle

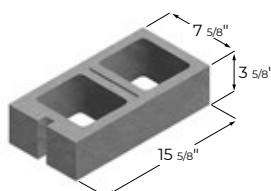
F L M N

8-inch Units



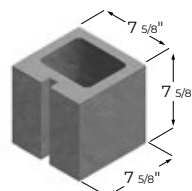
8 x 4 x 16
Hollow Stretcher

C F L M N



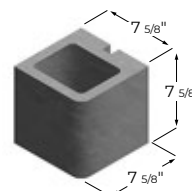
8 x 4 x 16
Hollow Corner Sash

C F L M N



8 x 8 x 8
Hollow Corner Sash Half

C F L M N



8 x 8 x 8
Hollow Single Bullnose Corner Sash

C F L M N

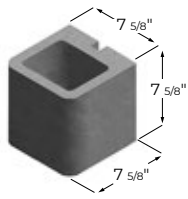
C Cockeysville **F** Frederick **L** Loucks Mill **M** Middletown **N** New Holland

See Your Sales Representative To Confirm These Details:

- Cube counts, weights & configuration can vary by plant location.
- Not all items shown are in-stock at every location.

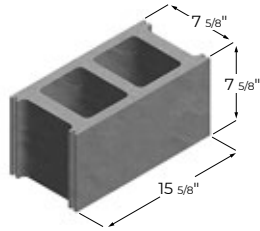
- Shown are the most popular units. Additional configurations may be available.
- Normal or lightweight products are available (but not stocked) in all shapes and sizes.

8-inch Units



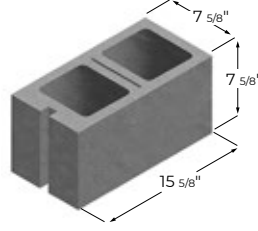
8 x 8 x 8
Hollow Double Bullnose
Corner Sash

C F L M N



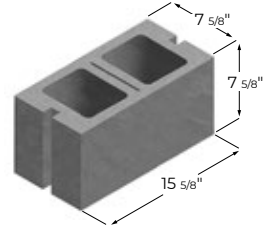
8 x 8 x 16
Hollow Stretcher

C F L M N



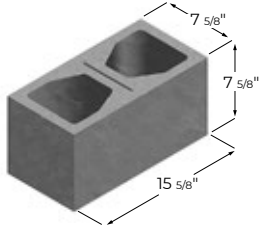
8 x 8 x 16
Hollow Corner Sash

C F L M N



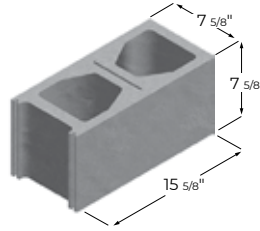
8 x 8 x 16
Hollow Double Sash

M N



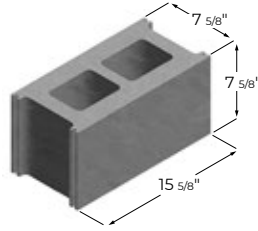
8 x 8 x 16
Hollow Pier

F L M N



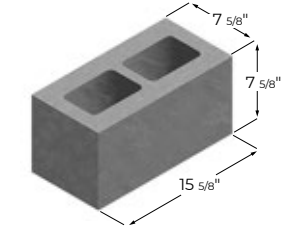
8 x 8 x 16
Hollow Stretcher Pier

F



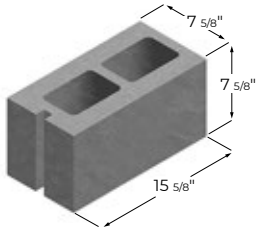
8 x 8 x 16
Hollow 3 Hour Fire Rated

C F L M N



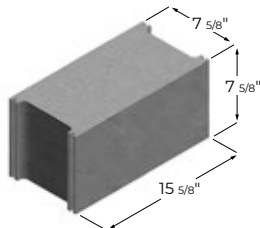
8 x 8 x 16
Semi-Solid Pier

C F L M N



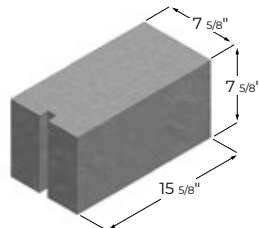
8 x 8 x 16
Semi-Solid Corner Sash

C F L M N



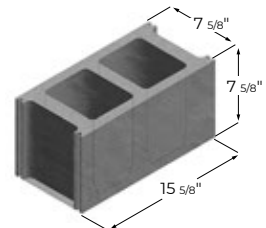
8 x 8 x 16
Solid Stretcher

M N



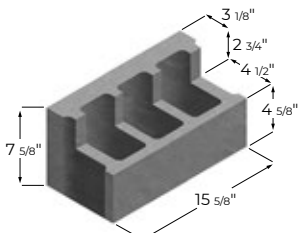
8 x 8 x 16
Solid Corner Sash

L M N



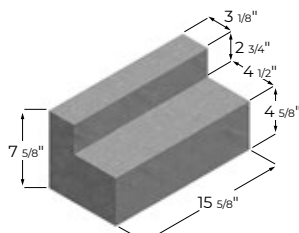
8 x 8 x 16
Hollow FHA/Cap

F L M N



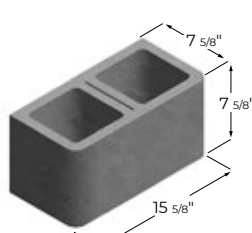
8 x 8 x 16
Hollow Header

C L M



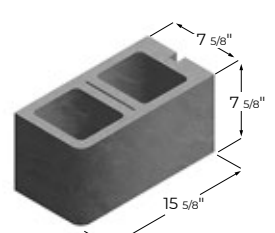
8 x 8 x 16
Solid Header Pier

C L M



8 x 8 x 16
Hollow Single Bullnose Pier

F L M N



8 x 8 x 16
Hollow Single Bullnose
Corner Sash

C L M N

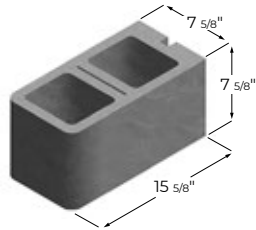
C Cockeysville **F** Frederick **L** Loucks Mill **M** Middletown **N** New Holland

See Your Sales Representative To Confirm These Details:

- Cube counts, weights & configuration can vary by plant location.
- Not all items shown are in-stock at every location.

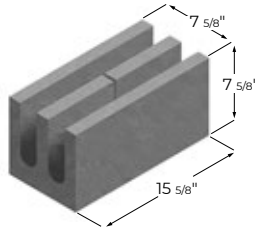
- Shown are the most popular units. Additional configurations may be available.
- Normal or lightweight products are available (but not stocked) in all shapes and sizes.

8-inch Units



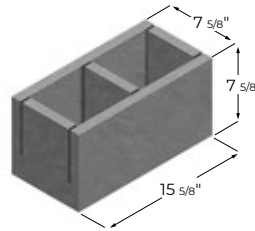
8 x 8 x 16
Hollow Double Bullnose
Corner Sash

C L M N



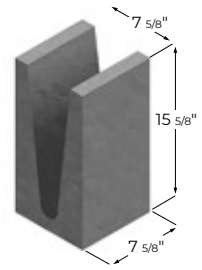
8 x 8 x 16
Solid-Bottom Bond Beam

F L M N



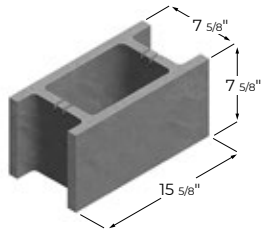
8 x 8 x 16
Knock-Out Bond Beam

C F L M N



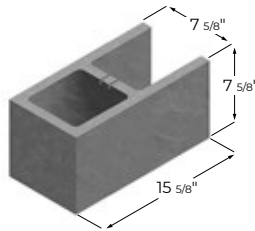
8 x 16 x 8
Bond Beam Lintel

C F L M N



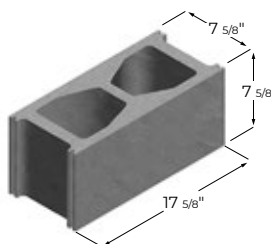
8 x 8 x 16
Open End

C F L M N



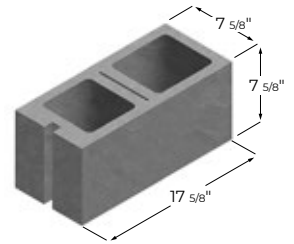
8 x 8 x 16
A-Shaped

C F L M N



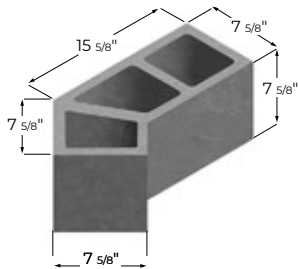
8 x 8 x 18
Hollow Stretcher

C L M N



8 x 8 x 18
Hollow Corner Sash

C L M N



8 x 8 x 21
45-Degree Angle

C L M N

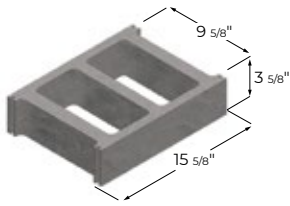
C Cockeysville **F** Frederick **L** Loucks Mill **M** Middletown **N** New Holland

See Your Sales Representative To Confirm These Details:

- Cube counts, weights & configuration can vary by plant location.
- Not all items shown are in-stock at every location.

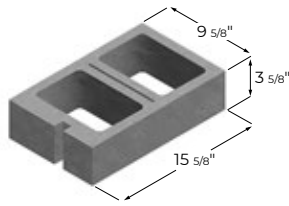
- Shown are the most popular units. Additional configurations may be available.
- Normal or lightweight products are available (but not stocked) in all shapes and sizes.

10-inch Units



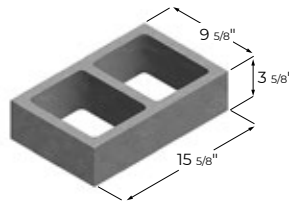
10 x 4 x 16
Hollow Stretcher

L M N



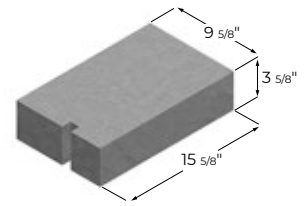
10 x 4 x 16
Hollow Corner Sash

M N



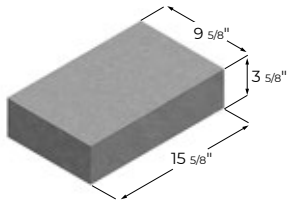
10 x 4 x 16
Hollow Pier

M N



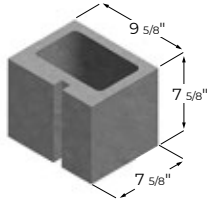
10 x 4 x 16
Solid Corner Sash

M N



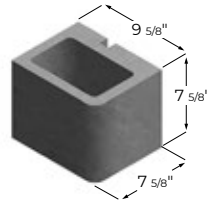
10 x 4 x 16
Solid Pier

L M N



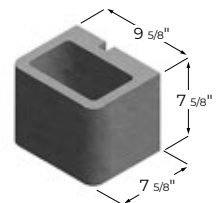
10 x 8 x 8
Hollow Corner Sash

C F L M N



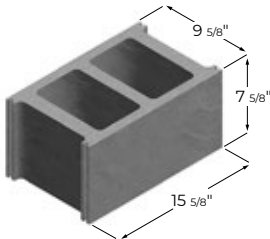
10 x 8 x 8
Hollow Single Bullnose
Corner Sash

C L M N



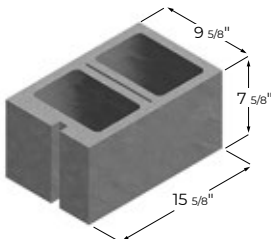
10 x 8 x 8
Hollow Double Bullnose
Corner Sash

C L M N



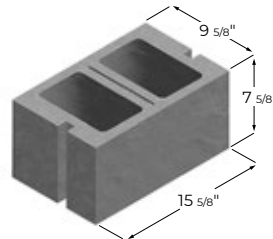
10 x 8 x 16
Hollow Stretcher

C L M N



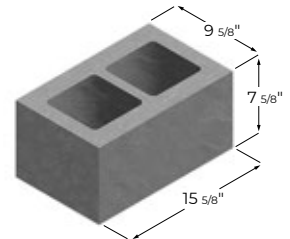
10 x 8 x 16
Hollow Corner Sash

C F L M N



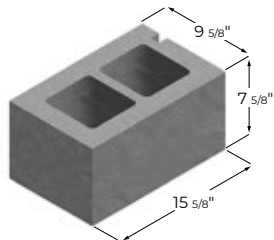
10 x 8 x 16
Hollow Double Sash

M N



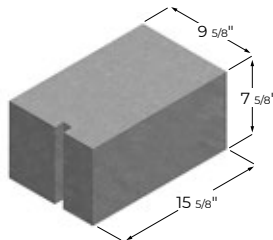
10 x 8 x 16
Semi-Solid Pier

L M



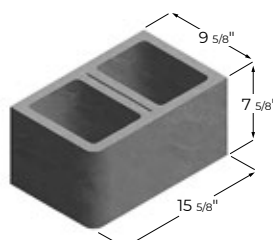
10 x 8 x 16
Semi-Solid Corner Sash

L M



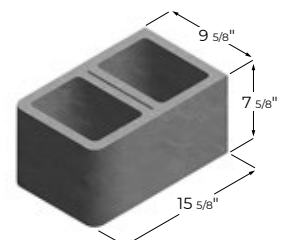
10 x 8 x 16
Solid Corner Sash

M N



10 x 8 x 16
Hollow Single Bullnose Corner

C F L M N



10 x 8 x 16
Hollow Double Bullnose Corner

F L M N

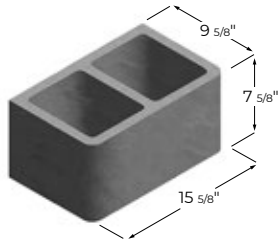
C Cockeysville **F** Frederick **L** Loucks Mill **M** Middletown **N** New Holland

See Your Sales Representative To Confirm These Details:

- Cube counts, weights & configuration can vary by plant location.
- Not all items shown are in-stock at every location.

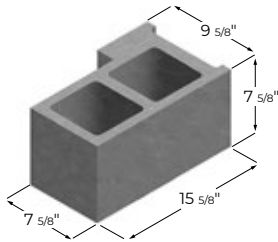
- Shown are the most popular units. Additional configurations may be available.
- Normal or lightweight products are available (but not stocked) in all shapes and sizes.

10-inch Units



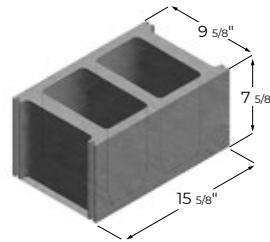
10 x 8 x 16
Hollow Single Bullnose Pier

F L M N



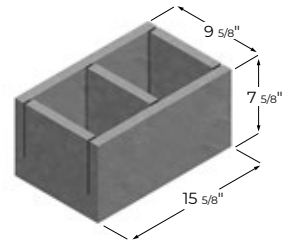
10 x 8 x 16
Hollow Return Corner

F L M N



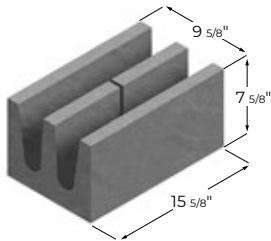
10 x 8 x 16
Hollow FHA/Cap 2 Core

L M N



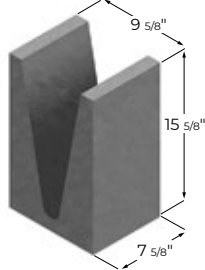
10 x 8 x 16
Knock-Out Beam

C L M N



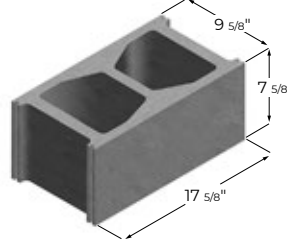
10 x 8 x 16
Solid-Bottom Bond Beam

L M N



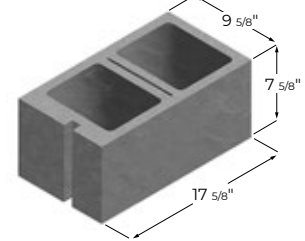
10 x 16 x 8
Bond Beam Lintel

M N



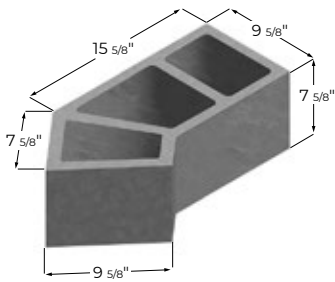
10 x 8 x 18
Hollow Stretcher

L M N



10 x 8 x 18
Hollow Corner Sash

L M N



10 x 8 x 21
45 Degree Angle

L M N

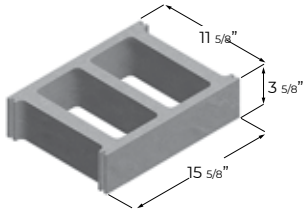
C Cockeysville **F** Frederick **L** Loucks Mill **M** Middletown **N** New Holland

See Your Sales Representative To Confirm These Details:

- Cube counts, weights & configuration can vary by plant location.
- Not all items shown are in-stock at every location.

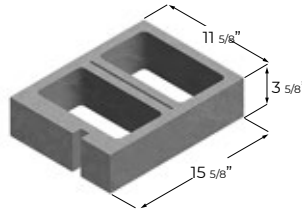
- Shown are the most popular units. Additional configurations may be available.
- Normal or lightweight products are available (but not stocked) in all shapes and sizes.

12-inch Units



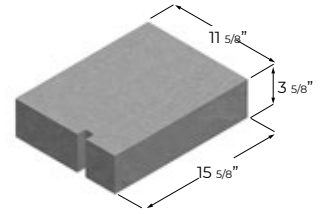
12 x 4 x 16
Hollow Stretcher

C F L M N



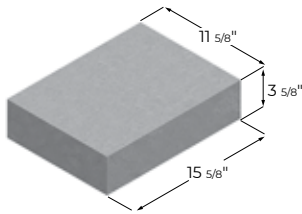
12 x 4 x 16
Hollow Corner Sash

C F M N



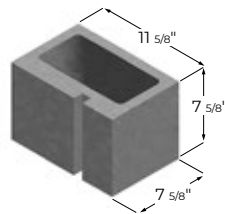
12 x 4 x 16
Solid Corner Sash

M N



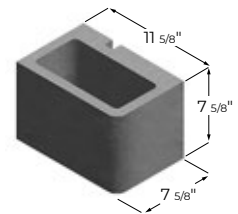
12 x 4 x 16
Solid Pier

L M N



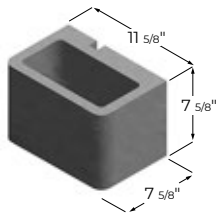
12 x 8 x 8
Hollow Corner Sash

C F L M N



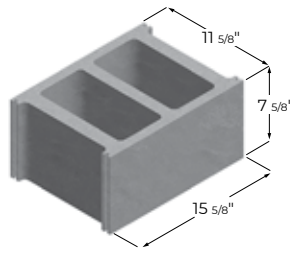
12 x 8 x 8
Hollow Single Bullnose Corner Sash

C F L M N



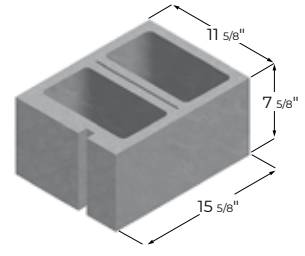
12 x 8 x 8
Hollow Double Bullnose Corner Sash

C F L M N



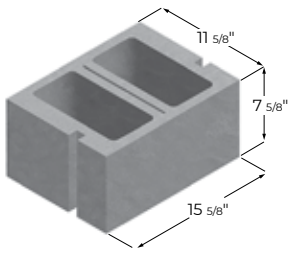
12 x 8 x 16
Hollow Stretcher

C F L M N



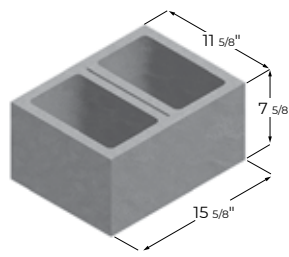
12 x 8 x 16
Hollow Corner Sash

C F L M N



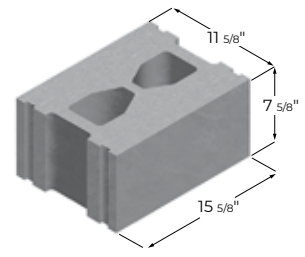
12 x 8 x 16
Hollow Double Sash

L M N



12 x 8 x 16
Hollow Pier

F L M N



12 x 8 x 16
Semi-Solid Stretcher

L M N

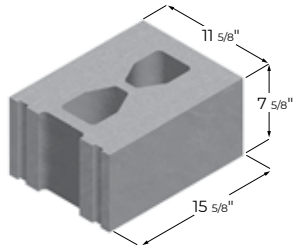
C Cockeysville **F** Frederick **L** Loucks Mill **M** Middletown **N** New Holland

See Your Sales Representative To Confirm These Details:

- Cube counts, weights & configuration can vary by plant location.
- Not all items shown are in-stock at every location.

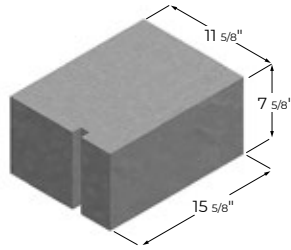
- Shown are the most popular units. Additional configurations may be available.
- Normal or lightweight products are available (but not stocked) in all shapes and sizes.

12-inch Units



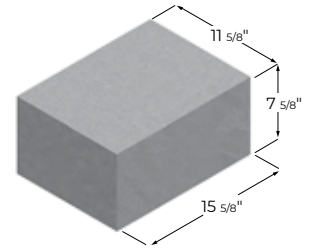
12 x 8 x 16
Semi-Solid Single Corner Ear

L M N



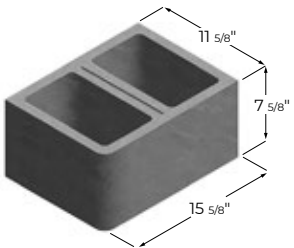
12 x 8 x 16
Solid Corner Sash

M N



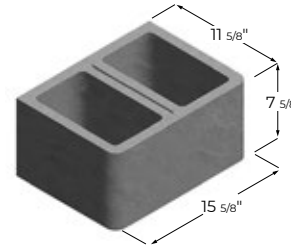
12 x 8 x 16
Solid Pier

L M



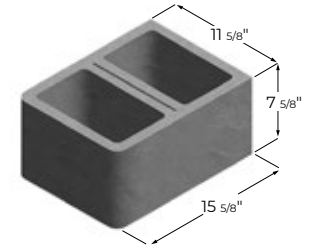
12 x 8 x 16
Hollow Single Bullnose Corner

C F L M N



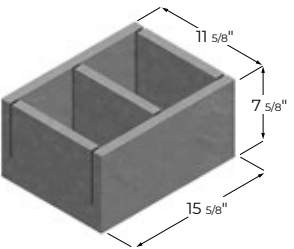
12 x 8 x 16
Hollow Single Bullnose Pier

F L M N



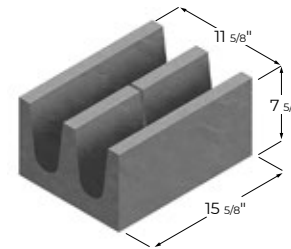
12 x 8 x 16
Hollow Double Bullnose Corner

C F L M N



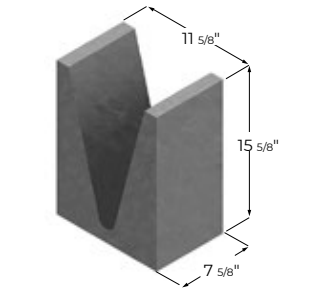
12 x 8 x 16
Knock-Out Bond Beam

C F L M N



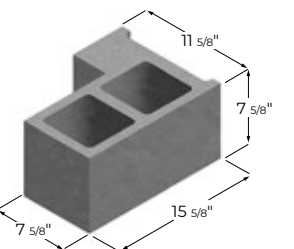
12 x 8 x 16
Solid-Bottom Bond Beam

F L M N



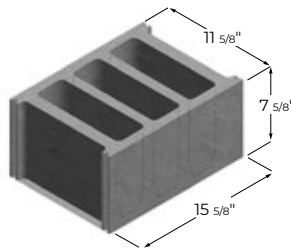
12 x 16 x 8
Bond Beam Lintel

L M N



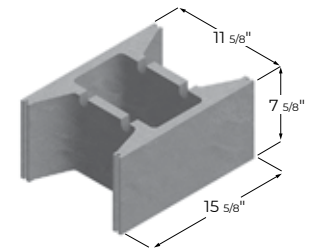
12 x 8 x 16
Hollow Return Corner

C F L M N



12 x 8 x 16
Hollow FHA/Cap 3 Core

M N



12 x 8 x 16
Open End

C F L M N

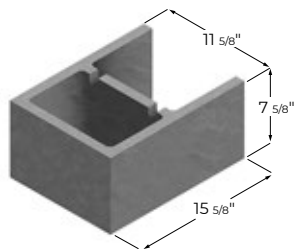
C Cockeysville **F** Frederick **L** Loucks Mill **M** Middletown **N** New Holland

See Your Sales Representative To Confirm These Details:

- Cube counts, weights & configuration can vary by plant location.
- Not all items shown are in-stock at every location.

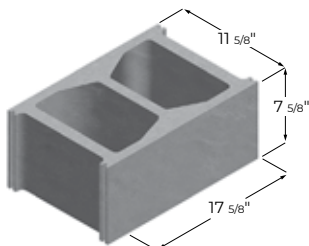
- Shown are the most popular units. Additional configurations may be available.
- Normal or lightweight products are available (but not stocked) in all shapes and sizes.

12, 14 and 16-inch Units



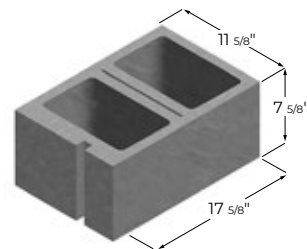
12 x 8 x 16
A-Shaped Block

L M N



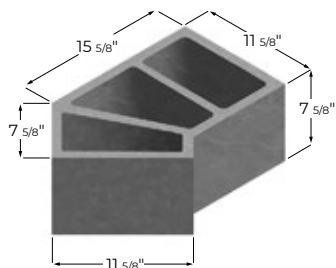
12 x 8 x 18
Hollow Stretcher

M N



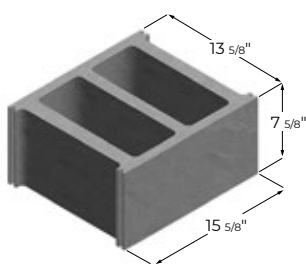
12 x 8 x 18
Hollow Corner Sash

M N



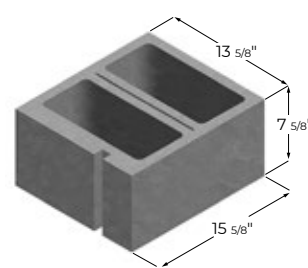
12 x 8 x 21
45 Degree Angle

C L M N



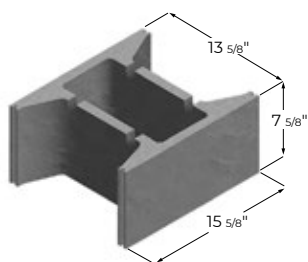
14 x 8 x 16
Hollow Stretcher

L M N



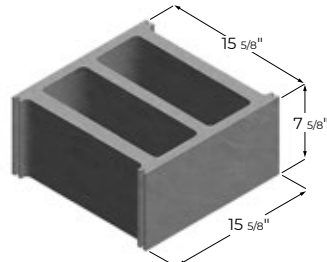
14 x 8 x 16
Hollow Corner Sash

F M N



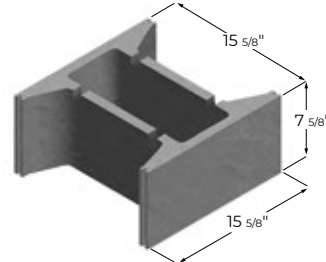
14 x 8 x 16
Open End

L M N



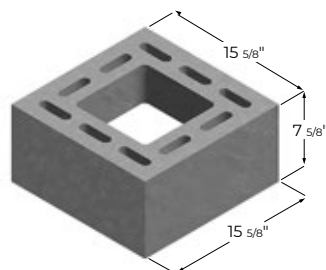
16 x 8 x 16
Hollow Stretcher

F L M N



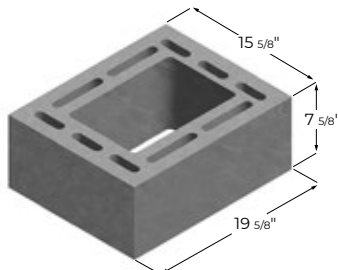
16 x 8 x 16
Open End

C F L M N



16 x 8 x 16
Chimney Block
(uses flue size 8 1/2" x 8 1/2")

C F M N



16 x 8 x 20
Chimney Block
(uses flue size 8 1/2" x 13")

C F M N

C Cockeysville **F** Frederick **L** Loucks Mill **M** Middletown **N** New Holland

See Your Sales Representative To Confirm These Details:

- Cube counts, weights & configuration can vary by plant location.
- Not all items shown are in-stock at every location.

- Shown are the most popular units. Additional configurations may be available.
- Normal or lightweight products are available (but not stocked) in all shapes and sizes.



Need **Assistance?**

sales@yorkbuilding.com
800.673.2408

