

# 3M DI-NOC™ Architectural Finishes

## Color Samples

Premium Wood  
Stucco  
Suède  
Solid Color  
Wood Grain

Dry Wood  
Terracotta  
Leather  
Smooth Metal  
Metal

Mortar  
Ceramic  
Fabric  
Metallic Wood  
Concrete

Plaster  
Textile  
Metallic Palette  
Chipboard  
Tile

Stone  
Oxidized Metal  
Plaster on Metal  
Fine Wood  
Abstract

## Functional Products

Abrasion Resistant


Whiteboard Film

Exterior

Glass Finishes

2021 - 2023





Functional Products



ME-433AR



WH-111

3M™ DI-NOC™ Architectural Finishes

## Abrasion Resistant AR Series

 74  
Patterns

### Superior Abrasion Resistance

3M™ DI-NOC™ Architectural Finishes Abrasion Resistant AR Series are decorative surface finishes for interior applications in high-traffic areas. The abrasion resistant top layer reduces the visibility of scratches.

### +10 New Patterns

Including designs unique for the AR series and expansion of Metallic series.



ME-2293AR

3M™ DI-NOC™ Architectural Finishes

## Whiteboard Film

 2  
Items

### Transform Surfaces into Communication Spaces

3M™ DI-NOC™ Whiteboard Film is a unique architectural finish that can convert interior surfaces into creative and collaborative environments. Compatible with most dry erase markers.

#### Writing

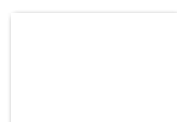
WH-111 offers excellent writing and erasing performance with a glossy surface.



WH-111

#### Writing and Projection

PWF-500 provides both whiteboard and projection capabilities, with the matte surface providing minimal glare from a projector.



PWF-500



FW-1122EX

3M™ DI-NOC™ Architectural Finishes  
**EX Series for Exterior**



**Weather Resistant Surface Finish for Exterior Applications**

3M™ DI-NOC™ EX Series for exteriors are durable, dimensionally stable, and weather resistant surface finishes for exterior applications. They can be applied directly on smooth, non-porous application surfaces. It is designed to maintain consistent finish and color, despite UV exposure and other conditions.

**Coordinate Exterior and Interior Designs**

Create a sense of unity between interior and exterior surfaces by using DI-NOC™ Standard Series and DI-NOC™ EX Series with the same design.



**Excellent Weather Resistance**

Exterior warranty ranges from 3 to 14 years, depending on the climate and installation location. Contact 3M Technical Support for detailed warranty information.



DG-1528

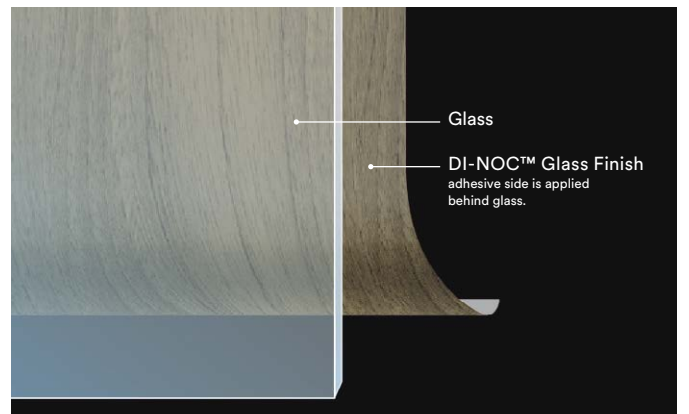
3M™ DI-NOC™ Architectural Finishes  
**Glass Finishes**



3M™ DI-NOC™ Glass Finishes can be used behind many glass surfaces and provide an opaque dimensional look when viewed from the front glass surface. The current Product line can be found in the 3M™ Glass Finishes Product Catalog.

**+4 New Patterns**

You can make a glass decorated with unique designs by applying DI-NOC™ Glass Finishes.



Glass

DI-NOC™ Glass Finish  
adhesive side is applied  
behind glass.



# 3M™ DI-NOC™



## Architectural Finishes

2021-2023

---

### Design Description Guide



- ① — WG-960
- ② —  — ②
- ③ —  WG-960EX

### WG-960EX



Series | Number | Suffix for functional series

- ① Standard series description
- ② Supplementary information icon
- ③ Functional series icon and design description

Standard and functional series have a similar appearance but are not identical.




---

### Supplementary Information Icon List

- NEW** New design
- H** Horizontal woodgrain
- MT** Matte design
-  Large scale design
-  Not recommended for use on 3D compound curved surfaces

---

### Functional Series Icon List

-  **EX Series :**  
for exterior applications
-  **AR Series :**  
for high traffic applications
-  **DG Series :**  
for applications behind glass

# WHAT IS A MASTERPIECE?

A masterpiece improves the lives of all who experience it. They are the objects of beauty inspired by nature and materials at hand — wood, textile, stone, leather, metal — and are limited only by the imagination of the master. 3M™ DI-NOC™ Architectural Finishes bring you the beauty of hundreds of natural elements with the additional new designs, Premium Wood, Metallic Palette and Artisanal Design, to inspire your masterpiece. We use advancements in science so you can capture the worlds natural beauty without sacrificing a forest or your creative ideals. You can create a stunning new space quickly, easily, and sustainably or breathe new life into an existing space almost overnight. The non-porous surface of DI-NOC™ Architectural Finishes is not just beautiful but easy to clean and disinfect. There are no boundaries. No limits. Only your imagination. Create your masterpiece.





## Contents

### Matte :

Premium Wood	8
Dry Wood	10
Mortar / Plaster	14
Plaster on Metal	16
Stone	16
Stucco / Terracotta / Ceramic	17
Textile	18
Fabric	18
Suede / Leather	19
Oxidized Metal	19
Metallic Palette	20
Smooth Metal	20
Solid Color	21

### Basic :

Metallic Wood	23
Chipboard	23
Fine Wood	24
Wood Grain	32
Wood Grain Gloss	34
Metal	38
Stone / Concrete / Tile	42
Textile	44
Leather	45
Abstract	46
Solid Color	48
Abrasion Resistant	50
Exterior	51







## Do more with your designs

- 1 PS-504
- 2 ME-1781AR
- 3 AE-1632 / FW-1212 / PS-713
- 4 PS-1187
- 5 DW-1888MT / PS-503
- 6 Custom design of EX series
- 7 DW-1888MT
- 8 PS-504 / PA-045AR
- 9 PS-1870MT / PWF-500
- 10 FW-336 / PS-1869MT (PS-3869MT)



# Matte Series



GOOD  
DESIGN  
AWARD  
2019

- 1 PW-2315MT NEW
- 2 ST-2171MT NEW
- 3 ME-2262 NEW
- 4 ST-1831DG
- 5 ME-2265 NEW
- 6 AE-2152MT NEW

1

2

3

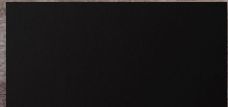
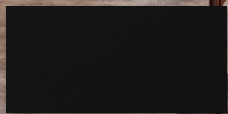
## Matte Coating Technology :

The new Matte Series utilizes the latest technology available. With a new state of the art matte surface, the Matte Series offers realistic texture by converting incident light into diffuse reflection and suppressing specular reflection. This series also provides fingerprint resistance. Explore the new world of design possibilities with 3M Matte Series.

Experience the difference in texture between standard series and new Matte Series

**Matte Series**  
PS-1870MT

**Standard Series**  
PS-999





5

6



### Diffuse Reflection

The new state of the art matte surface converts incident light into diffuse reflection, providing very low gloss and a deep, high quality matte texture.



### Fingerprint Resistant

The matte texture provides fingerprint resistance, reducing the visibility of fingerprints with an easy to maintain surface.



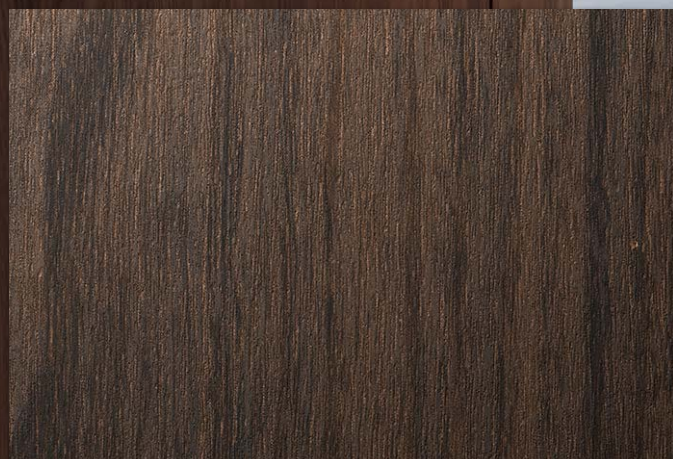
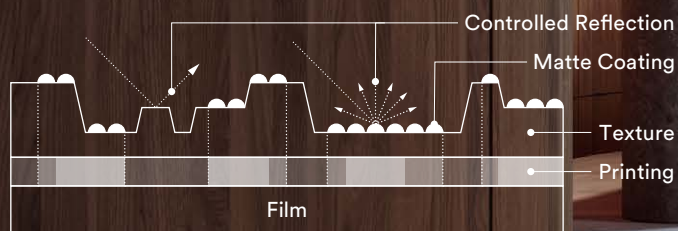
### Tactile Feature

A realistic matte texture is created by combining the matte coating technology with high definition embossing technology.

# Premium Wood

## Controlled Reflection Technology

The new Premium Wood Series expresses the realistic appearance and texture of natural wood. The controlled reflection of the matte coating technology is combined with both fine and deep wood grain embossing and high-quality printing. This unique technology creates the optimum tone and texture of each species of wood.



PW-2314MT

NEW 

1 PW-2315MT NEW 2 ST-2171MT NEW



PW-2305MT

NEW



PW-2306MT

NEW



PW-2310MT

NEW



PW-2313MT

NEW



PW-2307MT

NEW



PW-2309MT

NEW



PW-2312MT

NEW



PW-2308MT

NEW



PW-2311MT

NEW



PW-2315MT

NEW



PW-2316MT

NEW



PW-2317MT

NEW



PW-2318MT

NEW



PW-2319MT

NEW

A

B

C

D

E

F

G

# Dry Wood

A



DW-2197MT



DW-2199MT



DW-2200MT



B

C



DW-1903MT



DW-1894MT



DW-1888MT



DW-1875MT



D



DW-2198MT



DW-2201MT



DW-2202MT



DW-1902MT



E



DW-1993MT



F



DW-2203MT



DW-2205MT



DW-2204MT



G



DW-2206MT



DW-1889MT







DW-1883MT



DW-1901MT



DW-2207MT



DW-1878MT



DW-1873MT



DW-1876MT



DW-2209MT



DW-2208MT



DW-1897MT



DW-2210MT



DW-1877MT



DW-2212MT



DW-1874MT



DW-2224MT



DW-1890MT



DW-1891MT



DW-1884MT



DW-2211MT



A

B

C

D

E

F

G

# Dry Wood

A



DW-2218MT



DW-1872MT



DW-2219MT



B



DW-1893MT



DW-1872MT



DW-2219MT



C



DW-1898MT



DW-2223MT



DW-2226MT



DW-2225MT



D



DW-1898MT



DW-2223MT



DW-2226MT



DW-2225MT



E



DW-2221MT



DW-2220MT



DW-2222MT



F



DW-2221MT



DW-2220MT



DW-2222MT



G



DW-1881MT



DW-1886MT



DW-1871MT



DW-2227MT





DW-1882MT



DW-1879MT



DW-2214MT



DW-1899MT



DW-2213MT



DW-2217MT



DW-1885MT



DW-1900HMT



DW-2216MT



DW-2215MT



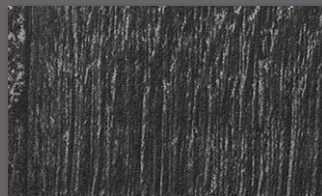
DW-1887MT



DW-2228MT



DW-1992MT



DW-1896MT



DW-2229MT



A

B

C

D

E

F

G



1

2

3

2

# Mortar / Plaster



AE-2149

NEW



AE-2150

NEW



AE-2160

NEW



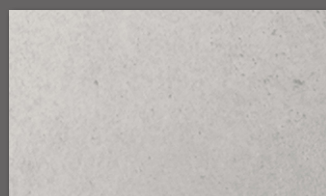
AE-1880MT

Large scale design



AE-1959MT

Large scale design



AE-1917MT

Large scale design



AE-1923MT

Large scale design



AE-1913MT

Large scale design



AE-2161

NEW



AE-2162MT

NEW



AE-2151

NEW



AE-2152MT

NEW



AE-1930MT

Large scale design



AE-2153MT

NEW



AE-1921MT

Large scale design



AE-1960MT

Large scale design



AE-1944MT

Large scale design

A

B

C

D

E

F

G

# Plaster on Metal

A

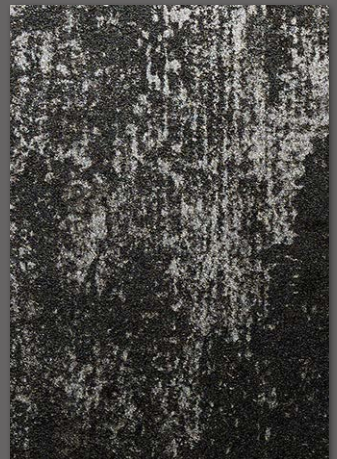


FE-1964



AE-2154

NEW



AE-2155

NEW



B

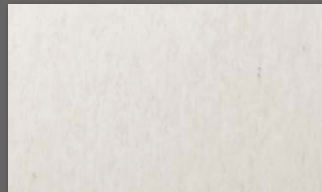
C

# Stone

D



ST-1914MT



ST-1919MT



ST-2171MT

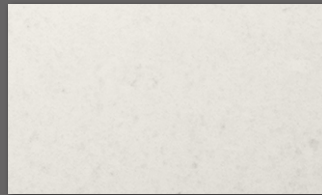
NEW



E



ST-1918MT



ST-1911MT



F



ST-2170MT

NEW



ST-1915MT



ST-1912MT



ST-1920MT



G

# Stucco / Terracotta / Ceramic



AE-2156

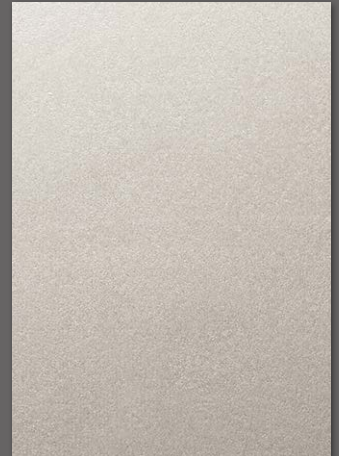
NEW 📷



AE-1637



AE-1638



AE-2158

NEW 📷



AE-2157

NEW 📷



AE-2163MT

NEW 📷



AE-1717

📷



AE-1639



AE-2164MT

NEW 📷



AE-2165MT

NEW 📷



AE-1926MT

📷



AE-1718



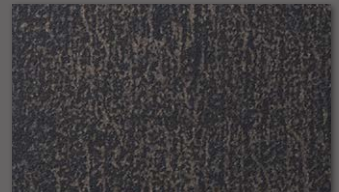
AE-2164MT

NEW 📷



AE-2165MT

NEW 📷



AE-1929MT

📷



AE-2159

NEW 📷



AE-1719

☑ DG-1719



AE-1640



AE-2167MT

NEW 📷

A

B

C

D

E

F

G

# Textile

A



NU-2177

NEW 



FE-1966



NU-2178

NEW 



NU-2176MT

NEW 

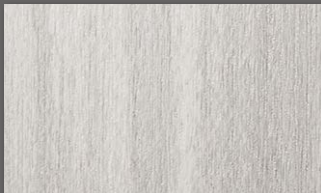
B



NU-2175MT

NEW 

C



NU-2179

NEW 



FE-1967

D

# Fabric

E



NU-1942MT





NU-1941MT





NU-1940MT





NU-1935MT



F



NU-1934MT





NU-1943MT





NU-1937MT



G



NU-1938MT





NU-1936MT





NU-1939MT





# Suede / Leather



SU-2233MT



SU-2231MT



SU-2234MT



SU-2235MT



AE-1931MT



SU-2232MT



AE-1932MT



AE-1933MT



# Oxidized Metal



ME-2172



ME-2173



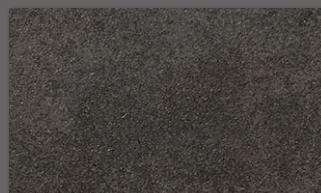
AE-1954



ME-2024



ME-2022



ME-2023

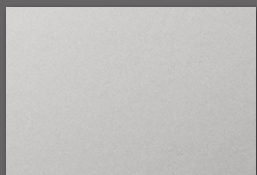


ME-2174

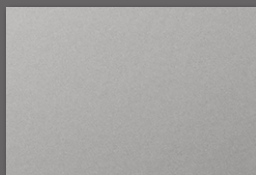


# Metallic Palette

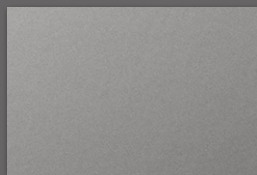
A



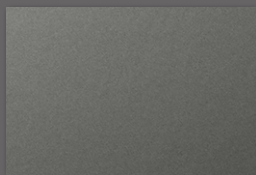
ME-2251MT NEW



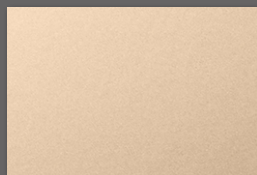
ME-2252MT NEW



ME-2253MT NEW



ME-2254MT NEW



ME-2255MT NEW

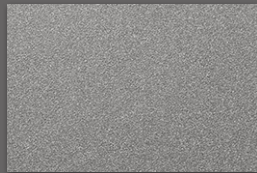
B



ME-2261 NEW



ME-2262 NEW



ME-2263 NEW



ME-2264 NEW



ME-2265 NEW

C



ME-2271 NEW



ME-2272 NEW



ME-2273 NEW

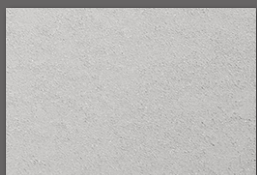


ME-2274 NEW

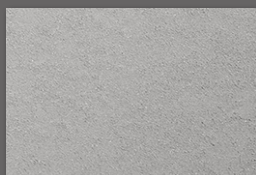


ME-2275 NEW

D



ME-2281AR NEW



ME-2282AR NEW



ME-2283AR NEW



ME-2284AR NEW



ME-2285AR NEW

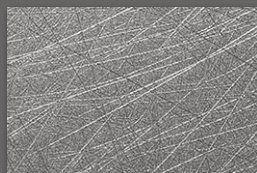
E



ME-2291AR NEW



ME-2292AR NEW



ME-2293AR NEW



ME-2294AR NEW

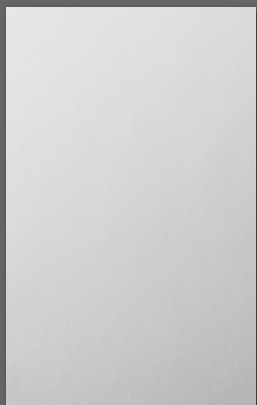


ME-2295AR NEW

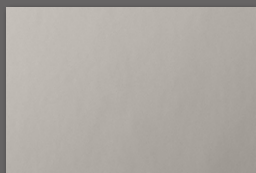
F

# Smooth Metal

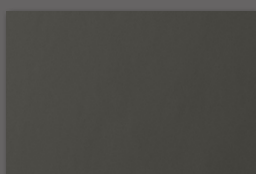
G



VM-1855MT



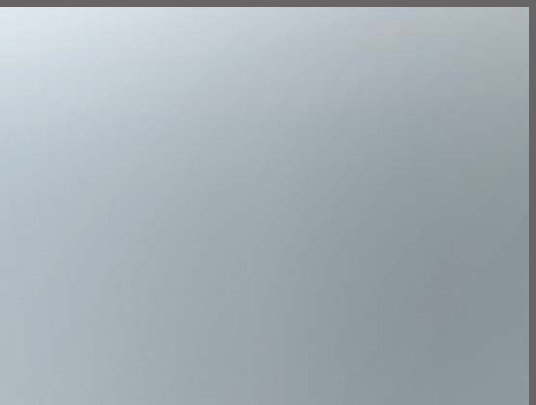
VM-1990MT



VM-1862MT



ME-2251MT NEW



H

# Solid Color



PS-3094MT/PS-3101MT/PS-3100MT/PS-3099MT/PS-3093MT/PS-3092MT/PS-3989MT/PS-3095MT/PS-3098MT/PS-3096MT/PS-3097MT

A

B

C

D

E

F

G

H



1

2

# Metallic Wood



MW-1416



MW-1242



MW-1833



MW-1832



MW-1418



MW-1244



MW-1417



MW-1834



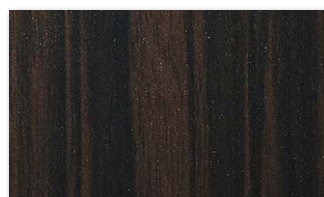
MW-1783



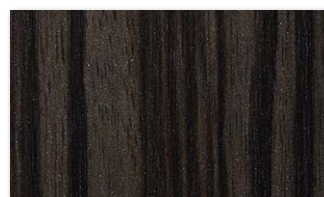
MW-1177



MW-1419  
 MW-1419DG



MW-776



MW-777

# Chipboard



AE-2168

NEW



AE-2168 NEW

A

B

C

D

E

F

G

# Fine Wood

A



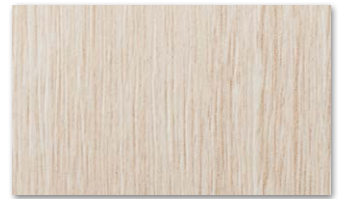
FW-1761



FW-1758



FW-1683



FW-1765

B



FW-1209



FW-788



FW-1261

C



FW-7017  
FW-7017AR



FW-1138  
FW-1138AR



FW-1139H



FW-336

D



FW-1208



FW-7001



FW-7001

E

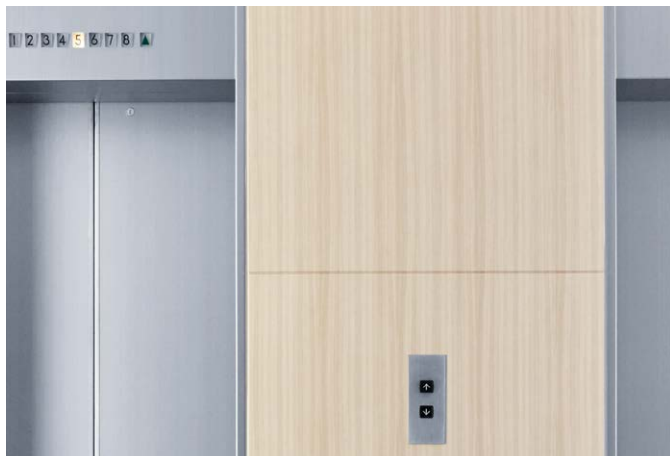


FW-1255



FW-1207

F



FW-1207 / ME-1434



FW-1271



FW-1217

G



FW-1210

NEW New design  
H Horizontal woodgrain  
MT Matte design

Large scale design  
Not recommended for use on  
3D compound curved surfaces

EX series: for exterior applications  
AR series: for high traffic applications  
DG series: for applications behind glass



FW-1981



FW-1745



FW-1211



FW-789



FW-1214  
FW-1214EX



FW-1291



FW-1766



FW-1258



FW-1129  
FW-1129AR  
FW-1129EX  
DG-1129



FW-1130H  
FW-1130HAR



FW-1766



FW-1256



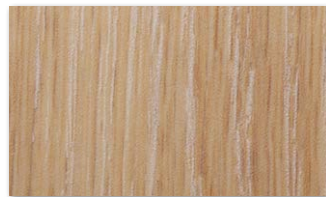
FW-1988



FW-1750



FW-1285



FW-1289



FW-1988



FW-1750



FW-1972



FW-1681



FW-1293  
FW-1293AR



FW-1279



FW-1972



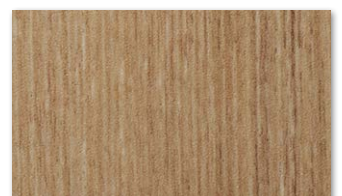
FW-1262



FW-1269



FW-1810



FW-1272

A

B

C

D

E

F

G

# Fine Wood

A



FW-1974



FW-1304



FW-1307



B



FW-1987



FW-1754



FW-1976



FW-1978



C



FW-1767



FW-1302



FW-1287



FW-1971



D



FW-1266



FW-1213



FW-1215



FW-1294  
FW-1294AR



E



FW-1259



FW-337  
FW-337AR



FW-1977



FW-1273



F



FW-1983



FW-1218



FW-1770

G



FW-1770





NEW New design  
H Horizontal woodgrain  
MT Matte design

Large scale design  
Not recommended for use on  
3D compound curved surfaces

EX series: for exterior applications  
AR series: for high traffic applications



FW-1265



FW-1212



FW-1257



FW-236

FW-236AR FW-236EX



FW-1122

FW-1122AR FW-1122EX



FW-1023

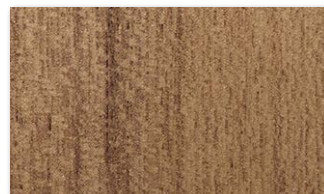
FW-1023EX



FW-1286



FW-1296



FW-1805

FW-1805EX



FW-1771H



FW-1306



FW-1755



FW-1734H



FW-1278



FW-502



FW-1735H

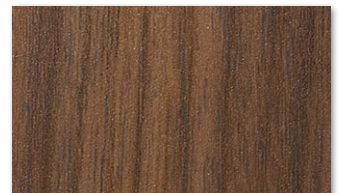


FW-7011

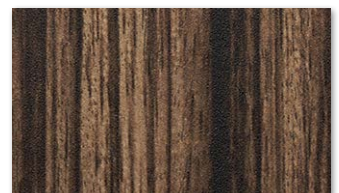
FW-7011AR FW-7011EX



FW-1763



FW-1021



FW-656



A

B

C

D

E

F

G

# Fine Wood

A



FW-327



FW-1283



FW-237



FW-1743

B



FW-234



 FW-1123  
 FW-1123EX



FW-608H



C



FW-1737



FW-1276



FW-795



FW-1331



D




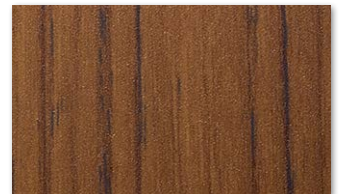
FW-1737



FW-501



FW-1280  
 FW-1280AR



FW-1125



E



FW-612



FW-655



FW-1738



FW-677

F






FW-888

G



FW-1281




 FW-233  
 FW-233AR  FW-233EX



FW-889



FW-7006  
 FW-7006EX

NEW New design  
**H** Horizontal woodgrain  
**MT** Matte design

Large scale design  
 Not recommended for use on 3D compound curved surfaces

EX series: for exterior applications  
 AR series: for high traffic applications  
 DG series: for applications behind glass



FW-7008  
 FW-7008EX



FW-1022  
 FW-1022AR FW-1022EX  
 DG-1022



FW-1121H  
 FW-1121HAR



FW-1113  
 FW-1113EX



FW-613



FW-609H  
 FW-609HEX



FW-650  
 FW-650EX



FW-1277



FW-1744



FW-1801  
 FW-1801EX



FW-232



FW-1124  
 FW-1124EX



FW-1039H



FW-332



FW-886



FW-510



FW-1137



FW-1040H



FW-240



FW-7016



FW-1020



FW-619



FW-887  
 FW-887EX



FW-7013

A

B

C

D

E

F

G

# Fine Wood

A



FW-1134



FW-606H

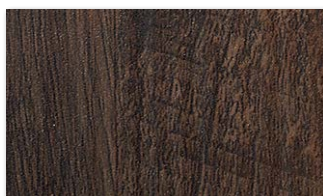


FW-625  
 FW-625AR FW-625EX

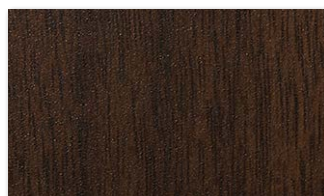


FW-7015

B



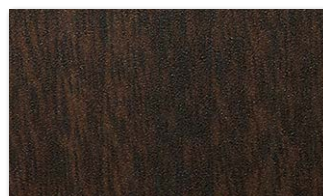
FW-1297



FW-651  
 FW-651EX



FW-1282



FW-1037

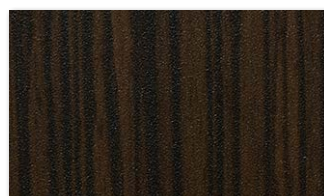
C



FW-338  
 FW-338AR



FW-7009

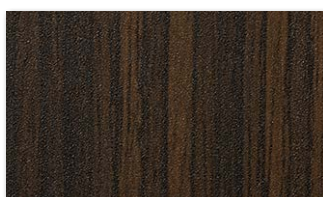


FW-1133

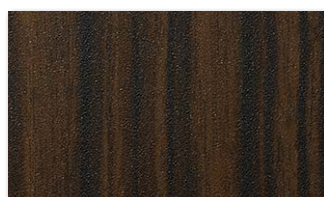


FW-607H

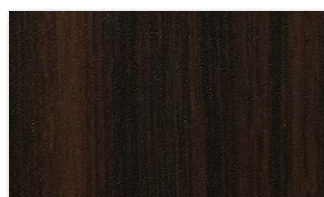
D



FW-653



FW-643  
 FW-643EX



FW-7014

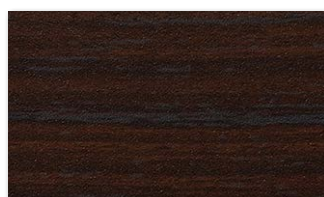


FW-330  
 FW-330AR FW-330EX

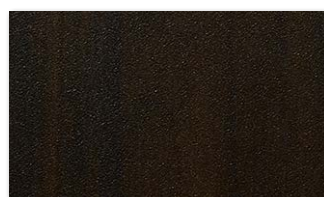
E



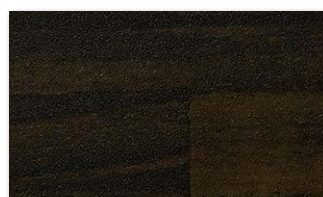
FW-1135



FW-1136H



FW-1036



FW-1752H

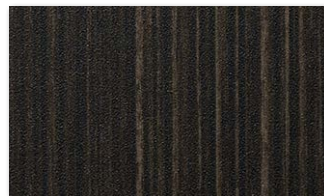
F



FW-1746



FW-334



FW-522  
 FW-522EX



FW-1752H

G



FW-1126



FW-627  
 FW-627AR FW-627EX



FW-1288



FW-618  
 FW-618EX

NEW New design  
H Horizontal woodgrain  
MT Matte design

Large scale design  
Not recommended for use on 3D compound curved surfaces

EX series: for exterior applications  
AR series: for high traffic applications  
DG series: for applications behind glass



FW-1736H



FW-1216



FW-7007



FW-1986



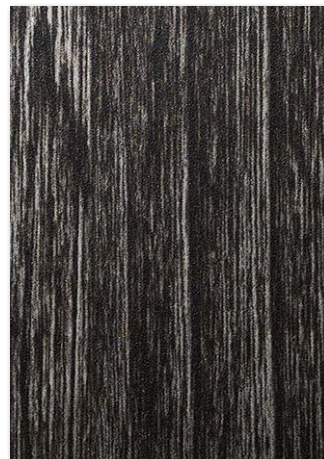
FW-1275



FW-1301



FW-1290



FW-1975



FW-324

FW-324EX



FW-640

FW-640EX



FW-1753H



FW-1127



FW-1762



FW-1751

FW-1751AR DG-1751



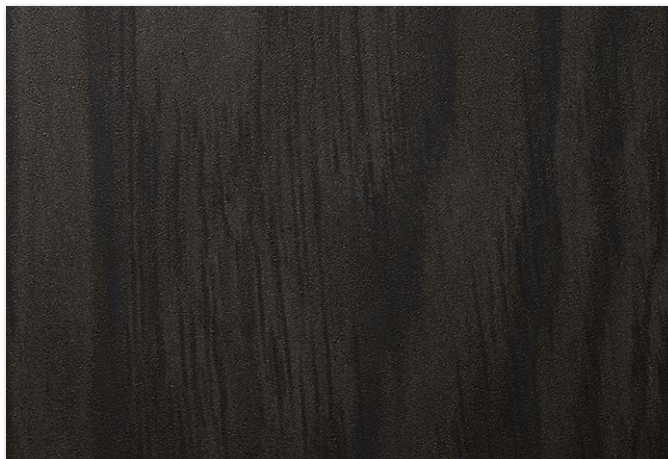
FW-641



FW-1984



FW-1979



FW-1970



FW-1985



FW-1740



FW-1757

A

B

C

D

E

F

G

# Wood Grain

A



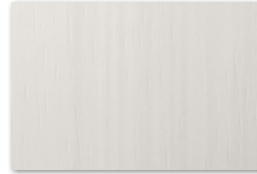
WG-657  
WG-657EX



WG-1365



WG-2078



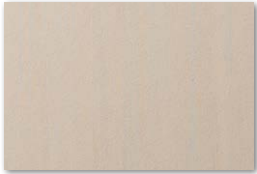
WG-1067



WG-1071



B



WG-1709



WG-1846



WG-247



WG-1046



WG-1339

C



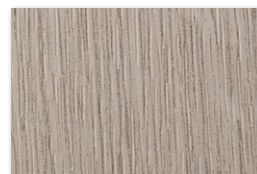
WG-1343



WG-2049



WG-1705



WG-2076



WG-467

D



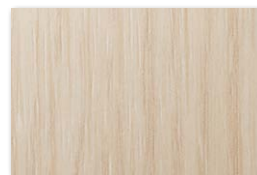
WG-1344



WG-2083H



WG-376



WG-1220



WG-2070



E



WG-1340



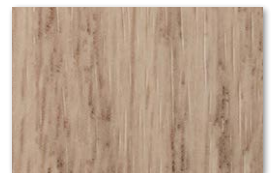
WG-1378



WG-960  
WG-960EX

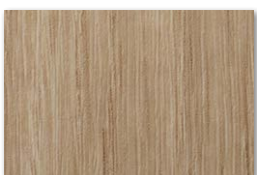


WG-2073



WG-964

F



WG-1838



WG-1141



WG-166



WG-2085

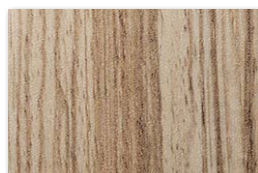


WG-2860

G



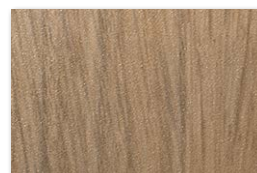
WG-1143  
WG-1143EX



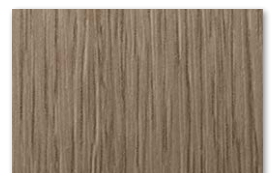
WG-2705



WG-1392H



WG-1710



WG-696

H



WG-1840



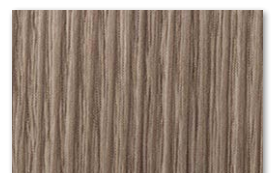
WG-1144  
WG-1144EX



WG-1837

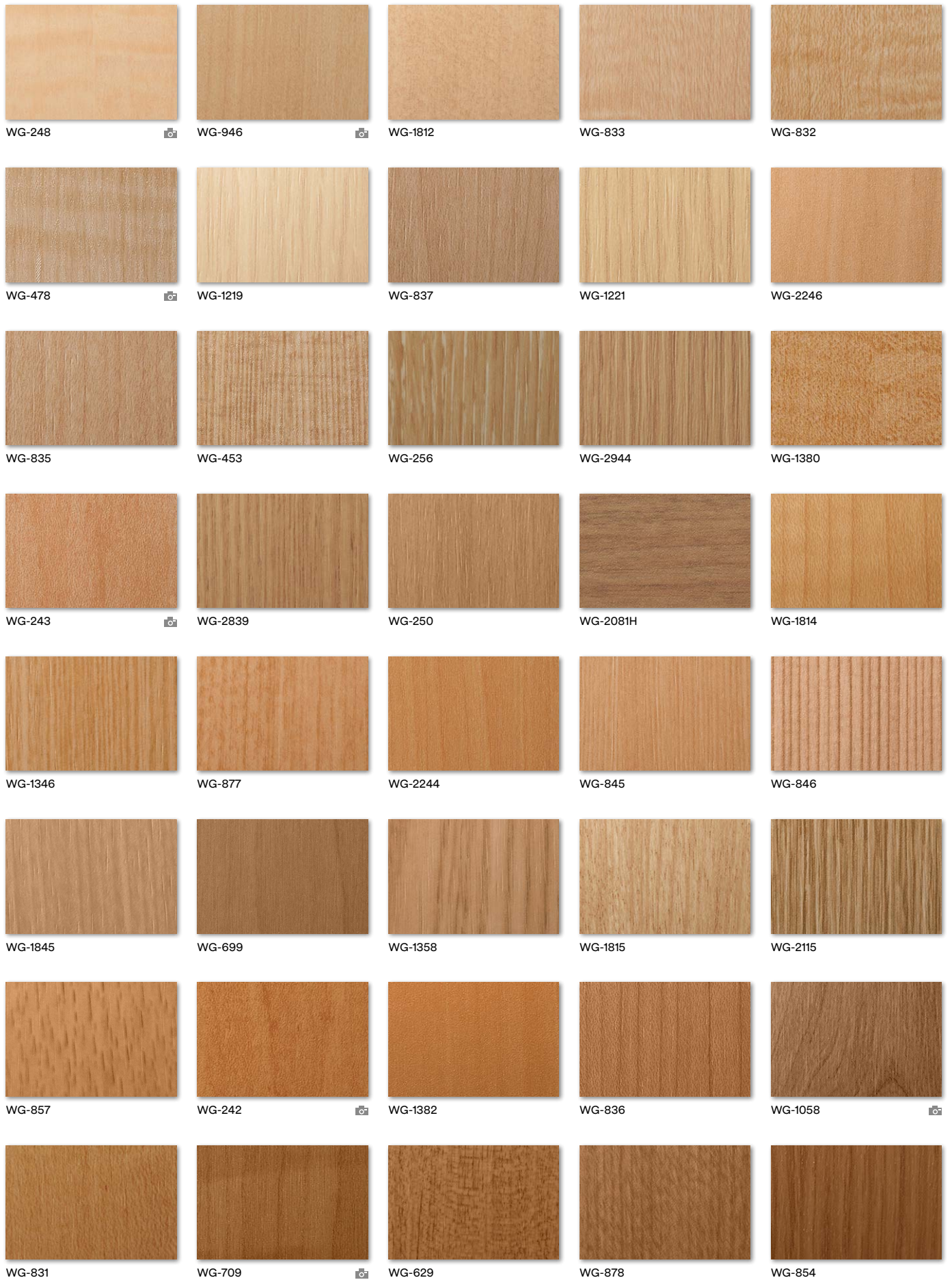


WG-1337



WG-947





A

B

C

D

E

F

G

H

# Wood Grain

A



WG-2071



WG-1360



WG-2080H



WG-1142



WG-1140  
WG-1140EX



B



WG-763



WG-865



WG-943

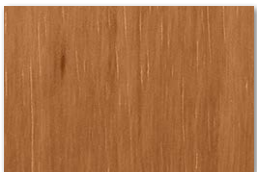


WG-941



WG-697

C



WG-841



WG-1359



WG-1375



WG-694



WG-7022



D



WG-879



WG-2862



WG-364



WG-940



WG-417



E

# Wood Grain Gloss

F



WG-1711GN



WG-763GN

G



WG-765GN

H



WG-1712GN



WG-364GN



WG-763GN



NEW New design  
H Horizontal woodgrain  
MT Matte design

Large scale design  
Not recommended for use on  
3D compound curved surfaces

EX series: for exterior applications  
AR series: for high traffic applications

# Wood Grain



WG-1703



WG-1353



WG-2086



WG-2088



WG-2072



WG-1336



WG-1336



WG-2082H



WG-1342



WG-2074



WG-2087



WG-2075



WG-1368



WG-1848



WG-1708



WG-1196



WG-695  
WG-695EX



WG-2042



WG-1706



WG-1369



WG-2084H



WG-1370



WG-1348



WG-157



WG-1371



WG-1349



WG-1372  
WG-1372AR



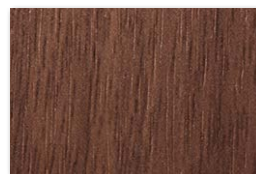
WG-1057



WG-2019



WG-1841



WG-2033



WG-1704

A

B

C

D

E

F

G

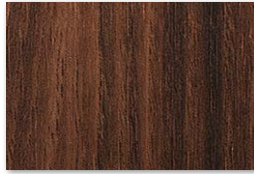
H

# Wood Grain

A



WG-1146



WG-1064



WG-7024

WG-7024AR WG-7024EX



WG-7023



WG-1390

B



WG-1816



WG-693



WG-1147



WG-159



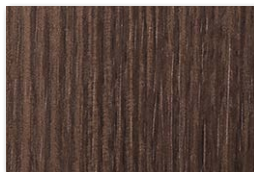
WG-7029



C



WG-1836



WG-1350



WG-2048



WG-1373

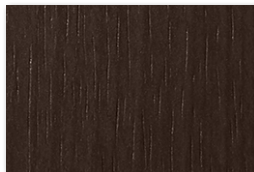


WG-1066

D



WG-1818



WG-1364



WG-1063



WG-664



WG-156

E



WG-2077

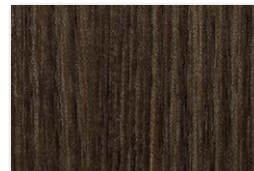


WG-1044

WG-1044EX



WG-1374



WG-1351



WG-1052

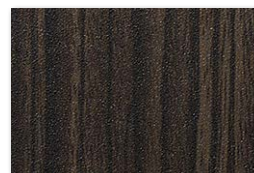
F



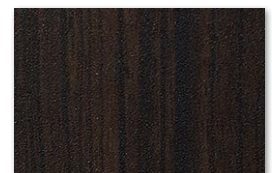
WG-1376



WG-1376



WG-1391



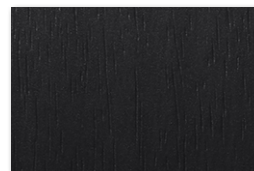
WG-2707



G



WG-1070



WG-2041



WG-1835

H



WG-2047



WG-1050



WG-428





# Metal

A



ME-1466  
 ME-1466AR



ME-1467  
 ME-1467AR



CH-2117



CH-1627



BW-1310



B



ME-1716  
 ME-1716DG



ME-433  
 ME-433AR



CH-1677



AM-1722



VM-1691



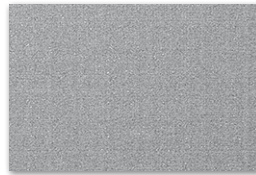
C



ME-432  
 ME-432AR DG-432



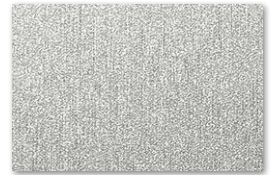
BW-1311



CH-2120



ME-904  
 ME-904AR



ME-377

D



ME-1435



CH-1676



PA-184



ME-388

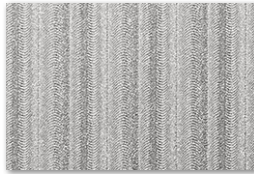


PA-045  
 PA-045AR

E



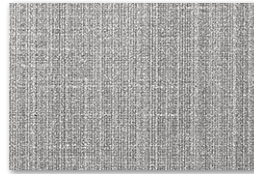
CH-1628  
 CH-1628AR



LW-1085



ME-1434  
 ME-1434DG



CH-2116



ME-396  
 ME-396AR

F



ME-391



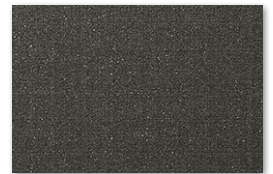
ME-1781  
 ME-1781AR



PA-185



PA-389  
 PA-389AR PA-389EX

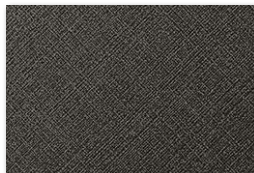


CH-2118

G



ME-431  
 ME-431AR



CH-1630  
 CH-1630AR



AM-1700



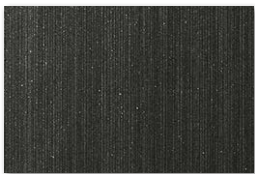
VM-2122



VM-1489



H



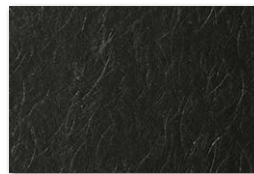
ME-379  
 DG-379



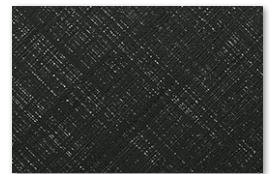
ME-1684  
 ME-1684AR



ME-1685  
 ME-1685AR



VM-800



CH-1631  
 CH-1631AR

NEW New design  
**H** Horizontal woodgrain  
**MT** Matte design

Large scale design  
 Not recommended for use on 3D compound curved surfaces

EX series: for exterior applications  
 AR series: for high traffic applications  
 DG series: for applications behind glass



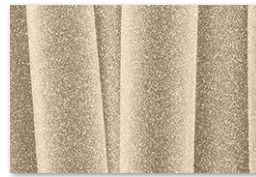
PA-180  
 PA-180AR PA-180DG



CH-1629  
 CH-1629AR



PA-046



BW-1312



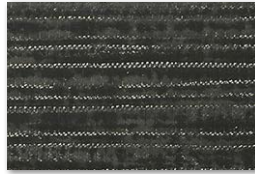
LW-1084



VM-306



VM-383



AM-1696



ME-1223



PA-039  
 PA-039EX



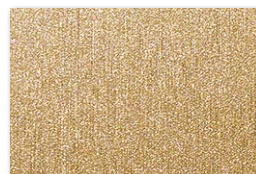
ME-1997



VM-1692



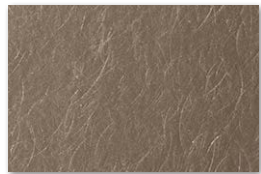
PA-683  
 PA-683AR



ME-486



AM-1701



VM-381



VM-1487



VM-2121



VM-305



ME-1225



PA-038  
 PA-038EX



PA-320



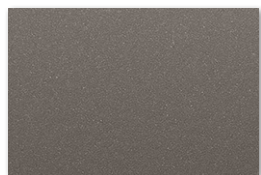
VM-1693



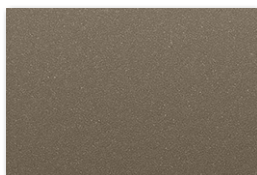
ME-1224



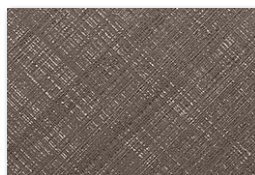
ME-380



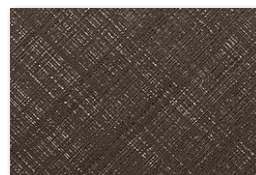
PA-187  
 PA-187AR PA-187EX



PA-183  
 PA-183AR



VM-1695



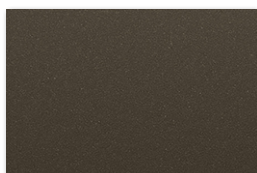
VM-1694



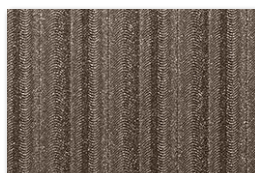
ME-1174



PA-390  
 PA-390EX



PA-181  
 PA-181AR PA-181EX



LW-1083



AM-1699



VM-1488

A

B

C

D

E

F

G

H

# Metal

A



VM-168



PA-175



ET-1773



ET-1775



ET-1772

B



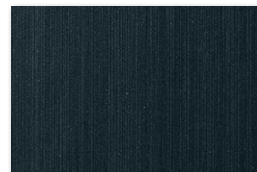
PA-178



PA-177

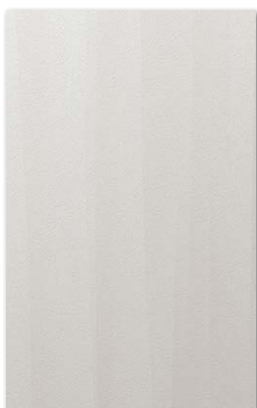


PA-036



ME-1175

C



FA-1963



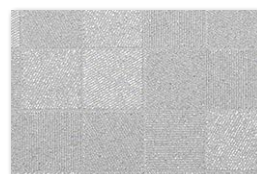
CA-419



BW-1315



TE-1714



RS-1190



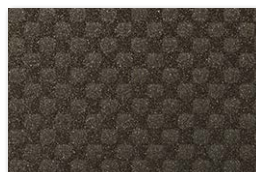
D



TE-1650



CA-422



TE-1652

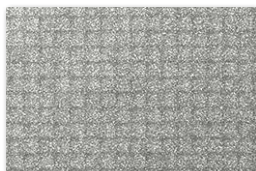


FA-1161  
 DG-1161

E



CA-418



TE-1651



TE-1713



HG-1995



BW-1316



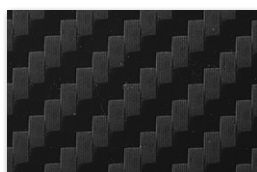
F



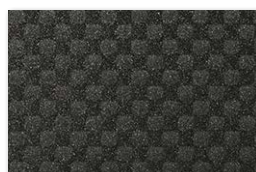
CA-420



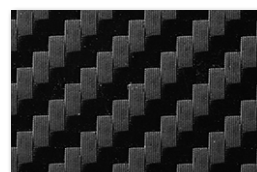
RS-1189



CA-421



TE-1653



CA-1170

G

H

NEW New design  
 H Horizontal woodgrain  
 MT Matte design

Large scale design  
 Not recommended for use on  
 3D compound curved surfaces

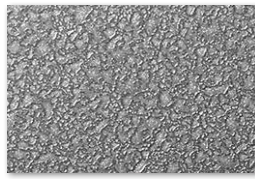
DG series: for applications behind glass



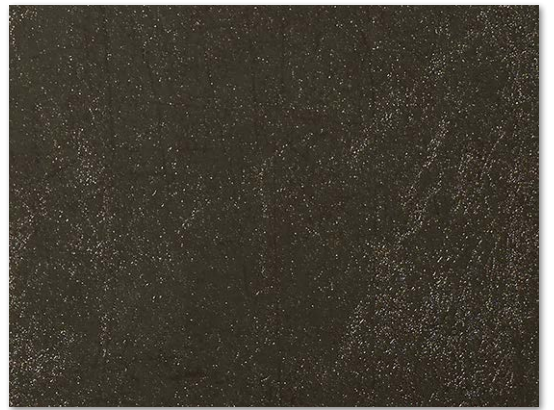
ME-2026



ME-1961



AM-1720



VM-2090



FA-1166



AE-1957



ME-2025



VM-452



VM-2035



AM-1698



ME-2020



AE-1643



FA-1164



VM-2038



VM-2037



ME-1778



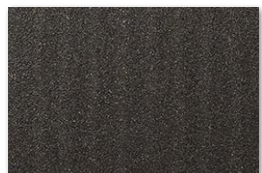
LE-1109



VM-2034



RT-1112



FA-1163



ME-1469



RT-1111



RT-1827  
 RT-1827DG



AE-1952



VM-2039



ME-2027



AE-1956



VM-2036



AE-1952

A

B

C

D

E

F

G

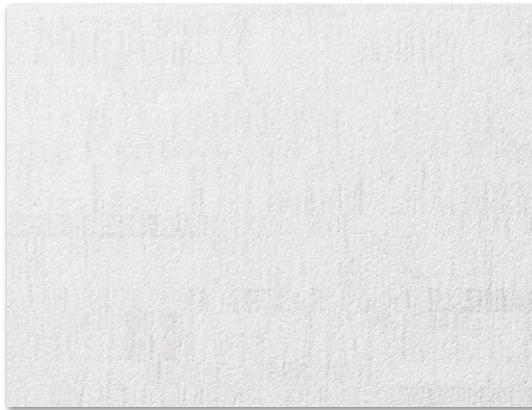
H

# Stone / Concrete / Tile

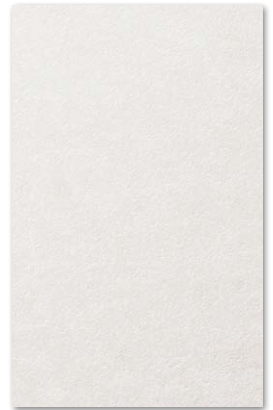
A



ST-1831  
 ST-1831DG



FA-1678  
 FA-1678AR FA-1678DG



AE-1632  
 AE-1632AR AE-1632EX

B

C



AE-1634  
 AE-1634EX



ST-1828



ST-1588



CN-1623

D

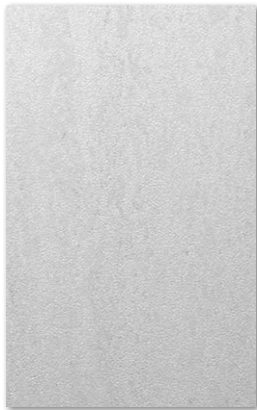


FA-1527  
 FA-1527AR



PC-1181

E



CN-1958



FA-1680



PC-758



CN-1621



CN-1622

F

G



PC-760



AE-1635  
 AE-1635EX



FA-1962



FA-1528  
 FA-1528DG

H



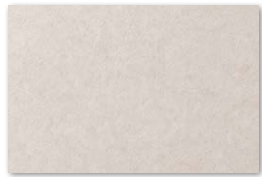
ST-1586



NEW New design  
H Horizontal woodgrain  
MT Matte design

📷 Large scale design  
⚠️ Not recommended for use on  
3D compound curved surfaces

🏠 EX series: for exterior applications



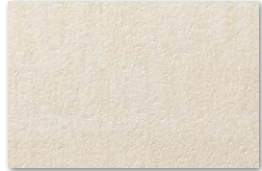
AE-1955



ST-736  
🏠 ST-736AR 🏠 ST-736EX



PC-672



FA-1679



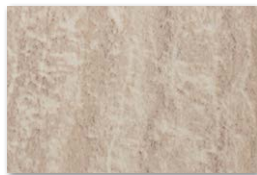
ST-737



ST-1195



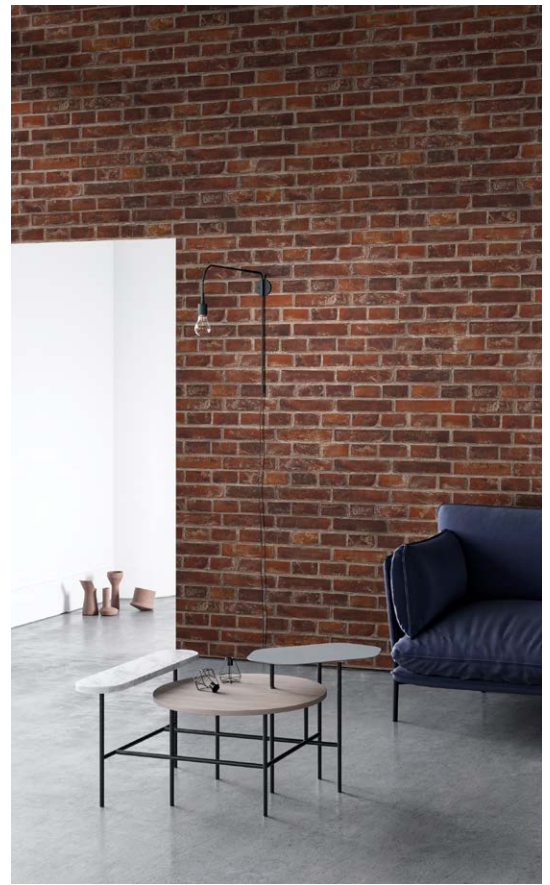
FA-1526  
🏠 FA-1526AR



ST-1829



PC-491



FA-2169 NEW



PC-1179



PC-1178



FA-2169



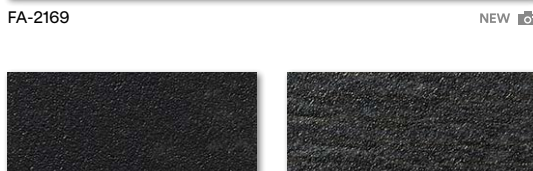
FA-592



ST-1587  
🏠 ST-1587DG



AE-1645



NEW



FA-1530  
🏠 FA-1530AR 🏠 FA-1530EX



AE-1951



AE-1636  
🏠 AE-1636AR



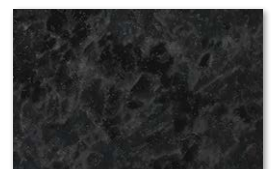
FA-1531



AE-1646



AE-1633  
🏠 AE-1633AR



ST-442  
🏠 ST-442EX



ST-1830

# Textile

A



NU-2012



NU-1237



NU-1784



NU-2014

B



FE-804



SI-1686

C



NU-1798



FE-805



FE-813



NU-1785



NU-1794



D



NU-1795



NU-2013



FE-813



NU-1785



NU-1238



E



NU-1790



NU-1793



NU-2015



NU-1239



FE-801



F



NU-1791



NU-1792



NU-1240



NU-2010



NU-2009

G



NU-1786  
 DG-1786



NU-1789



SI-1613  
 DG-1613



NU-2017



NU-2009

H



NU-1799



NU-1787



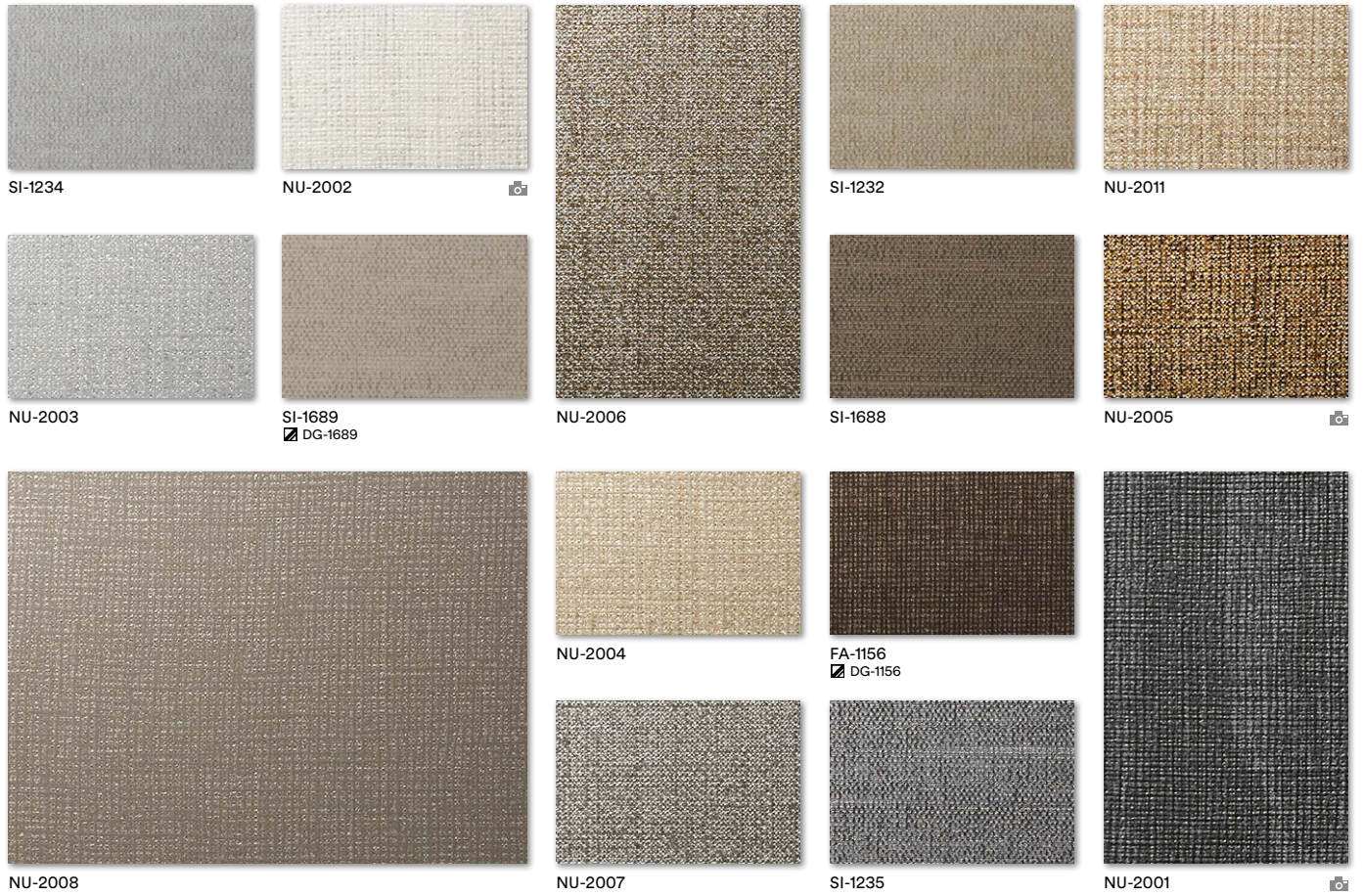
NU-1241



NEW New design  
 H Horizontal woodgrain  
 MT Matte design

Large scale design  
 Not recommended for use on 3D compound curved surfaces

EX series: for exterior applications  
 DG series: for applications behind glass

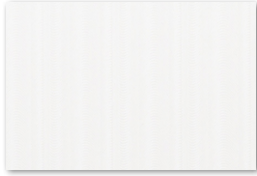


## Leather



# Abstract

A



LW-1081



AE-1953



LZ-461



FA-1153

B



HS-1655



FA-1150



FA-1150



FA-1153

C



FE-1731



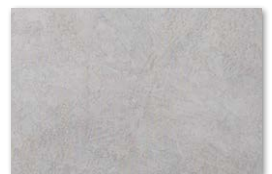
FA-1167



PT-735



FA-1099



SE-567  
**AR** SE-567AR

D



FA-1521



PT-346



SE-570



PG-197



LZ-462

E



FA-1098



PT-347



PT-345  
**AR** PT-345AR



PG-195



PG-190

F



LZ-587



SE-568  
**AR** SE-568AR



PG-194



LE-1229

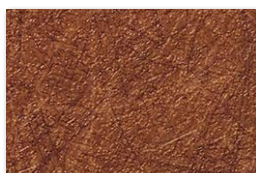


PG-189

G



AE-1642



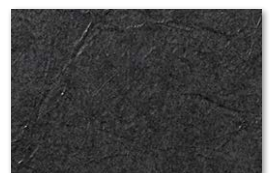
FA-690



FE-1729



FA-688



FE-1730

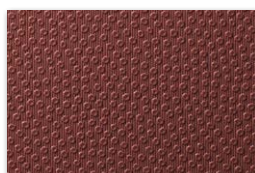
H



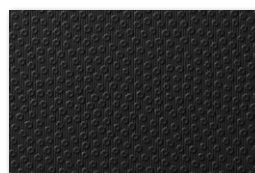
BW-1314



AE-1641



LE-1228



LE-1231



HS-1656



1

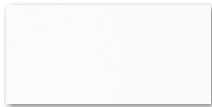
1

2

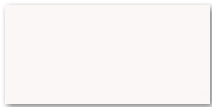
3

# Solid Color

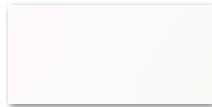
A



HG-1205



**PS-3904MT**  
(PS-1904MT)



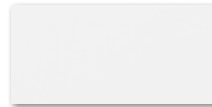
PS-503  
DG-503



PS-959  
PS-959EX



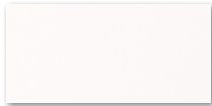
PS-1188



**PS-3989MT**  
(PS-1989MT)



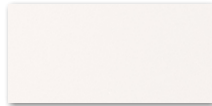
B



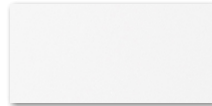
PS-001AR



PS-1187



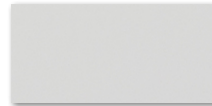
PS-003AR



PS-002AR



PS-957  
PS-957EX



**PS-3865MT**  
(PS-1865MT)



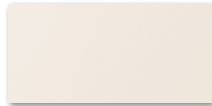
C



PS-976  
PS-976EX



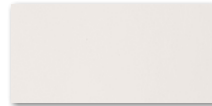
PS-983



PS-998



PS-975

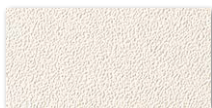


HG-1994



PS-955

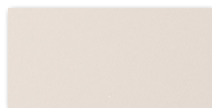
D



PS-1186



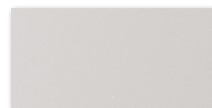
PS-1185



PS-004AR



PS-1437



PS-005AR

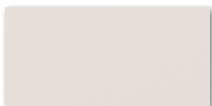


PS-954

E



PS-090  
PS-090EX



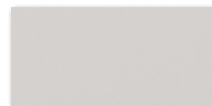
**PS-3864MT**  
(PS-1864MT)



PS-1184



PS-1438

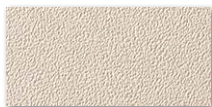


**PS-3091MT**  
(PS-2091MT)



PS-952

F



PS-048



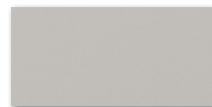
PS-073



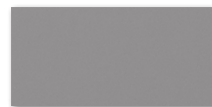
PS-091



PS-971



**PS-3866MT**  
(PS-1866MT)



**PS-3092MT**  
(PS-2092MT)



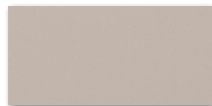
G



PS-075



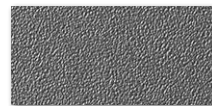
PS-093



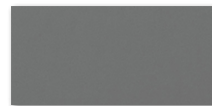
**PS-3863MT**  
(PS-1863MT)



**PS-3099MT**  
(PS-2099MT)



PS-949



**PS-3093MT**  
(PS-2093MT)



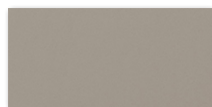
H



PS-027



PS-022



**PS-3095MT**  
(PS-2095MT)



PS-950



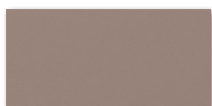
**PS-3100MT**  
(PS-2100MT)



**PS-3869MT**  
(PS-1869MT)



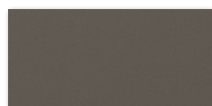
I



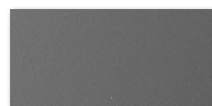
**PS-3098MT**  
(PS-2098MT)



PS-034



**PS-3096MT**  
(PS-2096MT)



PS-006AR



PS-992



PS-885

J



PS-074



PS-292



PS-1005



PS-1439



PS-948



PS-504  
DG-504

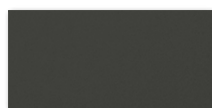
K



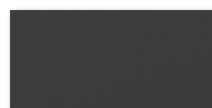
**PS-3867MT**  
(PS-1867MT)



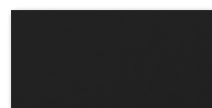
PS-110



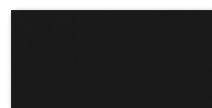
**PS-3101MT**  
(PS-2101MT)



**PS-3094MT**  
(PS-2094MT)



PS-1183



**PS-1870MT**



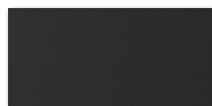
L



**PS-3097MT**  
(PS-2097MT)



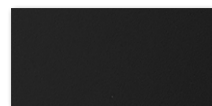
PS-1440



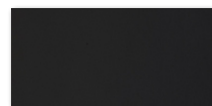
PS-007AR



PS-999



PS-008AR



HG-1201



NEW New design  
**H** Horizontal woodgrain  
**MT** Matte design

Large scale design  
 Not recommended for use on 3D compound curved surfaces

EX series: for exterior applications  
 DG series: for applications behind glass



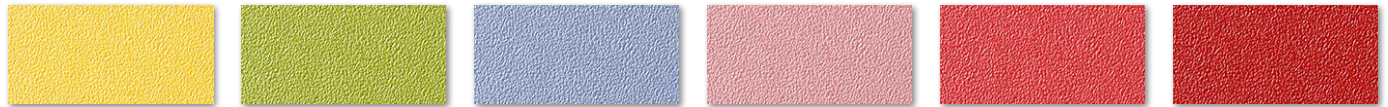
PS-042 PS-031 PS-1441 PS-1436 PS-982



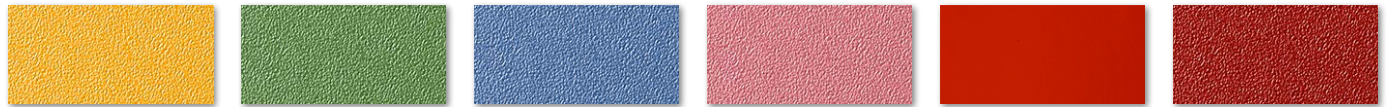
PS-096 PS-719 PS-1448 PS-1452 PS-112



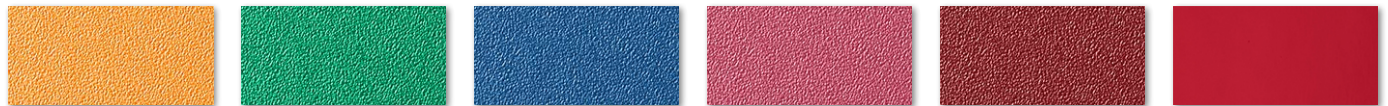
PS-1442 PS-116 PS-713 PS-281 PS-1820



PS-1443 PS-1446 PS-1450 PS-1454 PS-1459 PS-910



PS-912 PS-1010 PS-920 PS-121 HG-1996 PS-1008



PS-1444 PS-135 PS-506 PS-1455 PS-900 HG-1511



PS-134 PS-914 PS-140 PS-2060 PS-1009 PS-151



PS-141 PS-665 PS-668 PS-1823 PS-107



PS-1821 PS-139 PS-1825 PS-1457 PS-293



PS-1822 PS-1447 PS-1826 PS-1824 PS-294

A

B

C

D

E

F

G

H

I

J

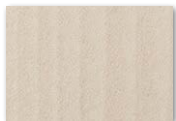
K

L

# Abrasion Resistant

For high traffic applications

A



FW-1138AR



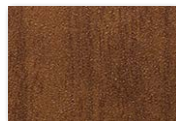
FW-1293AR



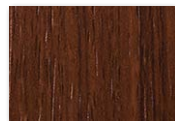
FW-236AR  
(AR-1119)



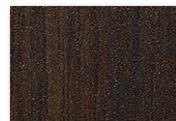
FW-1280AR



FW-233AR



WG-7024AR



FW-330AR

B



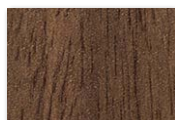
FW-7017AR  
(AR-1664)



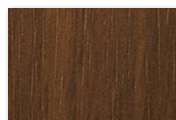
FW-1122AR



FW-7011AR



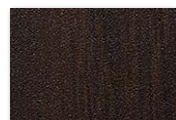
FW-1022AR



WG-1372AR



FW-338AR



FW-627AR

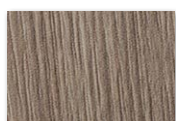
C



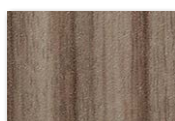
FW-1129AR



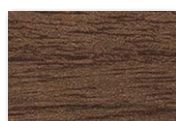
FW-1130HAR



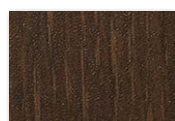
FW-337AR



FW-1294AR



FW-1121HAR

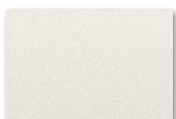


FW-625AR  
(AR-1120)



FW-1751AR

D



ME-1467AR



ME-433AR



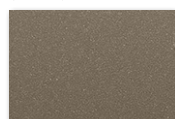
ME-432AR



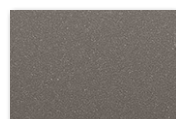
PA-045AR  
(AR-1117)



PA-180AR NEW



PA-183AR  
(AR-1246)



PA-187AR

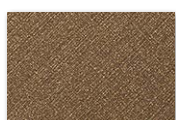
E



CH-1628AR



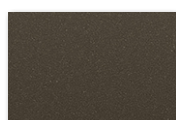
CH-1629AR  
(AR-1723)



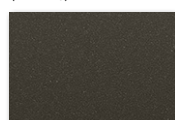
ME-009AR  
(AR-1724)



PA-683AR



PA-181AR  
(AR-1663)



PA-389AR  
(AR-1118)



ME-431AR

F



ME-1466AR  
(AR-1725)



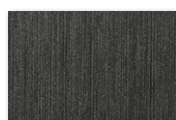
ME-904AR



ME-396AR



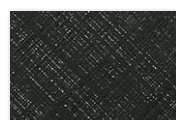
ME-1781AR  
(AR-1726)



ME-1684AR

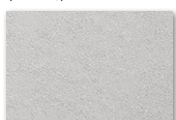


CH-1630AR

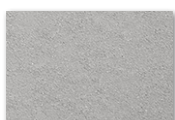


CH-1631AR

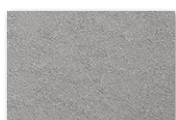
G



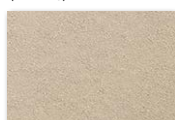
ME-2281AR NEW



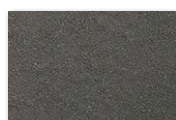
ME-2282AR NEW



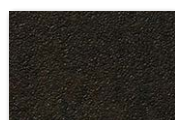
ME-2283AR NEW



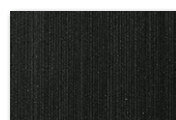
ME-2285AR NEW



ME-2284AR NEW



FA-1530AR



ME-1685AR

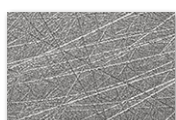
H



ME-2291AR NEW



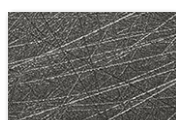
ME-2292AR NEW



ME-2293AR NEW



ME-2295AR NEW



ME-2294AR NEW

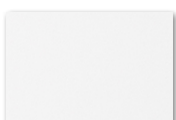


AE-1633AR

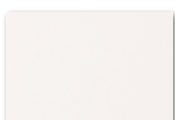


AE-1636AR

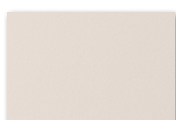
I



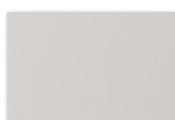
PS-002AR



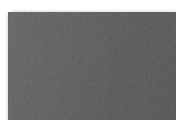
PS-003AR  
(AR-1115)



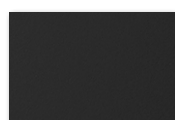
PS-004AR  
(AR-1661)



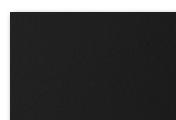
PS-005AR



PS-006AR B

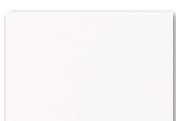


PS-007AR  
(AR-1662) B



PS-008AR B

J



PS-001AR



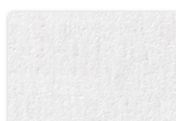
ST-011AR  
(AR-1247)



ST-736AR  
(AR-1116)



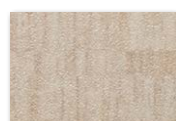
PT-345AR  
(AR-1250)



FA-1678AR



FA-1527AR

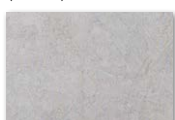


FA-1526AR

K



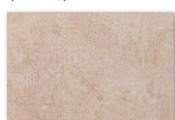
AE-1632AR



SE-567AR  
(AR-1248)



SE-010AR  
(AR-1251)



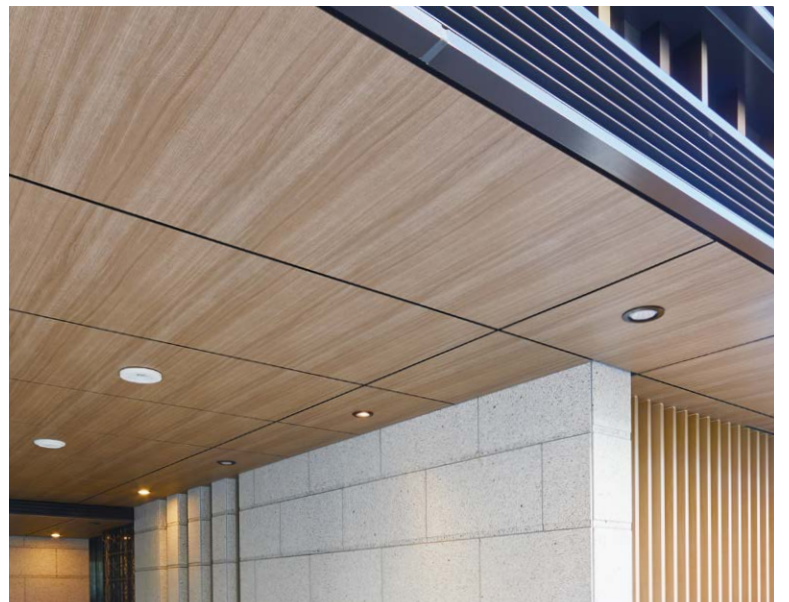
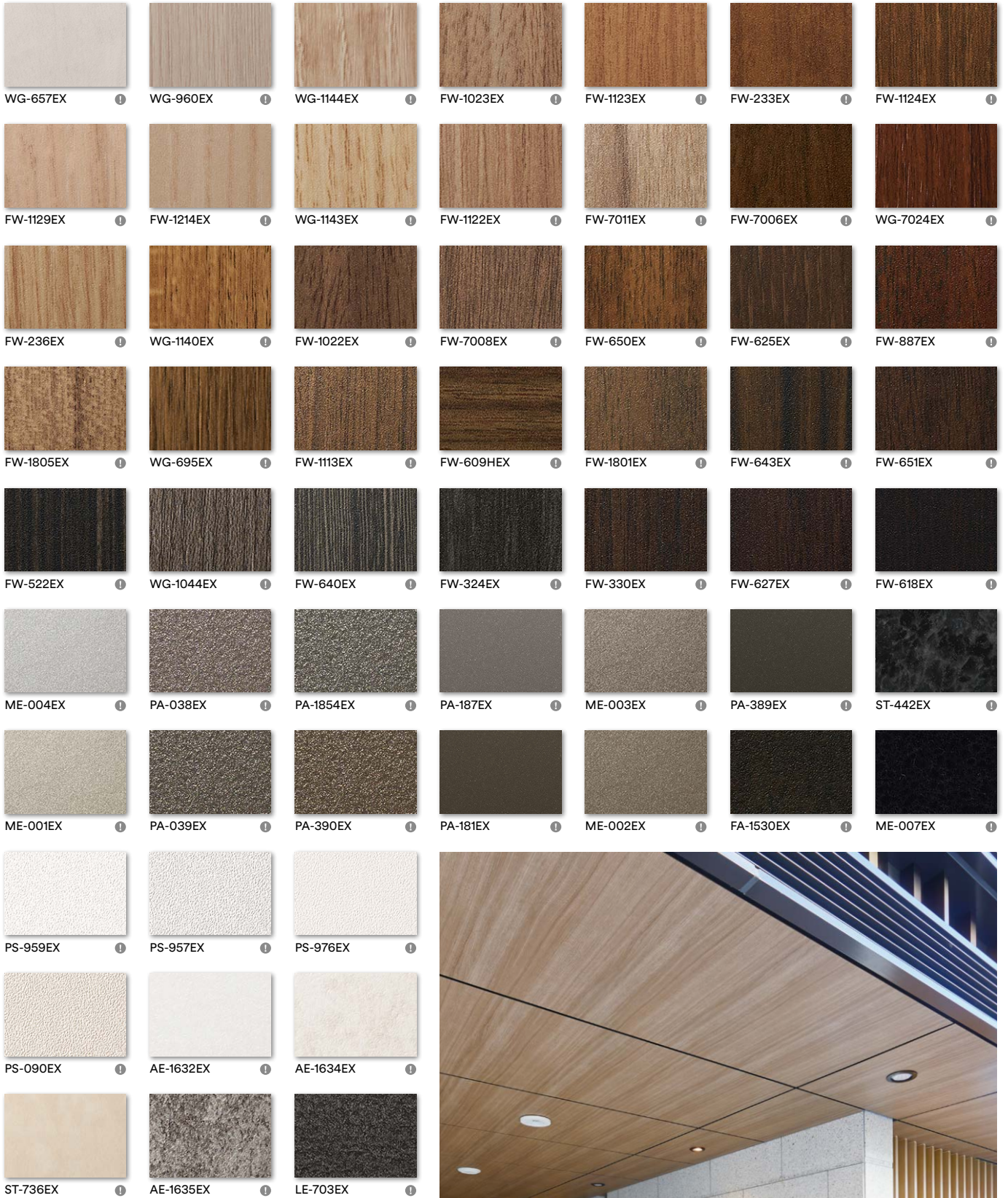
SE-568AR  
(AR-1249)

B Can be used with chalk for blackboard application.



# Exterior

## For exterior applications



FW-1122EX

A

B

C

D

E

F

G

H

I

J

K

# Index

Product Code	page, column, row
--------------	-------------------

## AE | Earth / Stone

AE-1632	42	A	5
AE-1633	43	G	4
AE-1634	42	C	1
AE-1635	42	G	2
AE-1636	43	G	2
AE-1637	17	A	2
AE-1638	17	A	3
AE-1639	17	D	1
AE-1640	17	G	2
AE-1641	46	H	2
AE-1642	46	G	1
AE-1643	41	E	1
AE-1645	43	F	2
AE-1646	43	H	3
AE-1717	17	C	4
AE-1718	17	E	1
AE-1719	17	F	2
AE-1880MT	15	B	1
AE-1913MT	15	C	3
AE-1917MT	15	C	1
AE-1921MT	15	F	4
AE-1926MT	17	D	4
AE-1928MT	15	C	2
AE-1929MT	17	E	4
AE-1930MT	15	F	1
AE-1931MT	19	C	1
AE-1932MT	19	C	3
AE-1933MT	19	C	4
AE-1944MT	15	G	4
AE-1951	43	H	1
AE-1952	41	G	5
AE-1953	46	A	2
AE-1954	19	E	4
AE-1955	43	A	1
AE-1956	41	H	3
AE-1957	41	B	3
AE-1959MT	15	B	2
AE-1960MT	15	G	1
AE-2149	15	A	1
AE-2150	15	A	2
AE-2151	15	D	3
AE-2152MT	15	D	4
AE-2153MT	15	F	2
AE-2154	16	A	2
AE-2155	16	A	4
AE-2156	17	A	1
AE-2157	17	B	1
AE-2158	17	A	4
AE-2159	17	F	1
AE-2160	15	A	3
AE-2161	15	C	4
AE-2162MT	15	D	1
AE-2163MT	17	B	2
AE-2164MT	17	D	2
AE-2165MT	17	D	3
AE-2167MT	17	F	3
AE-2168	23	F	1

Product Code	page, column, row
--------------	-------------------

## AM | Advanced Metallic

AM-1696	39	B	3
AM-1698	41	C	4
AM-1699	39	G	4
AM-1700	38	G	3
AM-1701	39	C	5
AM-1720	41	A	3
AM-1722	38	B	4

Product Code	page, column, row
--------------	-------------------

## AR | Abrasion Resistant

AE-1632AR	50	K	1
AE-1633AR	50	H	6
AE-1636AR	50	H	7
CH-1628AR	50	E	1
CH-1629AR	50	E	2

Product Code	page, column, row
--------------	-------------------

CH-1630AR	50	F	6
CH-1631AR	50	F	7
FA-1526AR	50	J	7
FA-1527AR	50	J	6
FA-1530AR	50	G	6
FA-1678AR	50	J	5
FW-233AR	50	A	5
FW-236AR	50	A	3
FW-330AR	50	A	7
FW-337AR	50	C	3
FW-338AR	50	B	6
FW-625AR	50	C	6
FW-627AR	50	B	7
FW-1022AR	50	B	4
FW-1121HAR	50	C	5
FW-1122AR	50	B	2
FW-1129AR	50	C	1
FW-1130HAR	50	C	2
FW-1138AR	50	A	1
FW-1280AR	50	A	4
FW-1293AR	50	A	2
FW-1294AR	50	C	4
FW-1751AR	50	C	7
FW-7011AR	50	B	3
FW-7017AR	50	B	1
ME-009AR	50	E	3
ME-396AR	50	F	3
ME-431AR	50	E	7
ME-432AR	50	D	3
ME-433AR	50	D	2
ME-904AR	50	F	2
ME-1466AR	50	F	1
ME-1467AR	50	D	1
ME-1684AR	50	F	5
ME-1685AR	50	G	7
ME-1781AR	50	F	4
ME-2281AR	20	D	1
	50	G	1
ME-2282AR	20	D	2
	50	G	2
ME-2283AR	20	D	3
	50	G	3
ME-2284AR	20	D	4
	50	G	5
ME-2285AR	20	D	5
	50	G	4
ME-2291AR	20	E	1
	50	H	1
ME-2292AR	20	E	2
	50	H	2
ME-2293AR	20	E	3
	50	H	3
ME-2294AR	20	E	4
	50	H	5
ME-2295AR	20	E	5
	50	H	4
PA-045AR	50	D	4
PA-180AR	50	D	5
PA-181AR	50	E	5
PA-183AR	50	D	6
PA-187AR	50	D	7
PA-389AR	50	E	6
PA-683AR	50	E	4
PS-001AR	48	B	1
	50	J	1
PS-002AR	48	B	4
	50	I	1
PS-003AR	48	B	3
	50	I	2
PS-004AR	48	D	3
	50	I	3
PS-005AR	48	D	5
	50	I	4
PS-006AR	48	I	4
	50	I	5
PS-007AR	48	L	3
	50	I	6
PS-008AR	48	L	5
	50	I	7
PT-345AR	50	J	4
SE-010AR	50	K	3
SE-567AR	50	K	2
SE-568AR	50	K	4
ST-011AR	50	J	2
ST-736AR	50	J	3
WG-1372AR	50	B	5
WG-7024AR	50	A	6

Product Code	page, column, row
--------------	-------------------

## BW | Entertainment

BW-1310	38	A	5
BW-1311	38	C	2
BW-1312	39	A	4
BW-1314	46	H	1
BW-1315	40	C	3
BW-1316	40	E	5

Product Code	page, column, row
--------------	-------------------

## CA | Carbon

CA-418	40	E	1
CA-419	40	C	2
CA-420	40	F	1
CA-421	40	F	3
CA-422	40	D	3
CA-4170	40	F	5

Product Code	page, column, row
--------------	-------------------

## CH | Metallic Hairline

CH-1627	38	A	4
CH-1628	38	E	1
CH-1629	39	A	2
CH-1630	38	G	2
CH-1631	38	H	5
CH-1676	38	D	2
CH-1677	38	B	3
CH-2116	38	E	4
CH-2117	38	A	3
CH-2118	38	F	5
CH-2120	38	C	3

Product Code	page, column, row
--------------	-------------------

## CN | Concrete / Mortar

CN-1621	42	E	3
CN-1622	42	E	5
CN-1623	42	C	5
CN-1958	42	E	1

Product Code	page, column, row
--------------	-------------------

## DW | Dry Wood

DW-1871MT	12	G	3
DW-1872MT	12	A	2
DW-1873MT	11	B	2
DW-1874MT	11	E	3
DW-1875MT	10	C	4
DW-1876MT	11	B	3
DW-1877MT	11	E	1
DW-1878MT	11	B	1
DW-1879MT	13	A	2
DW-1881MT	12	G	1
DW-1882MT	13	A	1
DW-1883MT	11	A	1
DW-1884MT	11	G	3
DW-1885MT	13	C	4
DW-1886MT	12	G	2
DW-1887MT	13	E	4
DW-1888MT	10	C	3
DW-1889MT	10	G	4
DW-1890MT	11	G	1
DW-1891MT	11	G	2
DW-1893MT	12	B	1
DW-1894MT	10	C	2
DW-1896MT	13	G	2
DW-1897MT	11	C	3
DW-1898MT	12	C	1
DW-1899MT	13	B	1
DW-1900HMT	13	D	1
DW-1901MT	11	A	2
DW-1902MT	10	D	4
DW-1903MT	10	C	1
DW-1992MT	13	F	2
DW-1993MT	10	E	4
DW-2197MT	10	A	1
DW-2198MT	10	D	1
DW-2199MT	10	A	3
DW-2200MT	10	A	4
DW-2201MT	10	D	2
DW-2202MT	10	D	3
DW-2203MT	10	F	1
DW-2204MT	10	F	4
DW-2205MT	10	F	3

Product Code	page, column, row
--------------	-------------------

DW-2206MT	10	G	3
DW-2207MT	11	A	3
DW-2208MT	11	C	1
DW-2209MT	11	A	4
DW-2210MT	11	C	4
DW-2211MT	11	F	4
DW-2212MT	11	E	2
DW-2213MT	13	B	2
DW-2214MT	13	A	3
DW-2215MT	13	D	3
DW-2216MT	13	D	2
DW-2217MT	13	C	3
DW-2218MT	12	A	1
DW-2219MT	12	A	3
DW-2220MT	12	E	3
DW-2221MT	12	E	1
DW-2222MT	12	E	4
DW-2223MT	12	C	2
DW-2224MT	11	E	4
DW-2225MT	12	C	4
DW-2226MT	12	C	3
DW-2227MT	12	G	4
DW-2228MT	13	F	1
DW-2229MT	13	F	3

Product Code	page, column, row
--------------	-------------------

## ET | Effect

ET-1772	40	A	5
ET-1773	40	A	3
ET-1775	40	A	4

Product Code	page, column, row
--------------	-------------------

## EX | Exterior

AE-1632EX	51	I	2
AE-1634EX	51	I	3
AE-1635EX	51	J	2
FA-1530EX	51	G	6
FW-233EX	51	A	6
FW-236EX	51	C	1
FW-324EX	51	E	4
FW-330EX	51	E	5
FW-522EX	51	E	1
FW-609EX	51	D	4
FW-618EX	51	E	7
FW-625EX	51	C	6
FW-627EX	51	E	6
FW-640EX	51	E	3
FW-643EX	51	D	6
FW-650EX	51	C	5
FW-651EX	51	D	7
FW-887EX	51	C	7
FW-1022EX	51	C	3
FW-1023EX	51	A	4
FW-1133EX	51	D	3
FW-1122EX	51	B	4
FW-1123EX	51	A	5
FW-1124EX	51	A	7
FW-1129EX	51	B	1
FW-1214EX	51	B	2
FW-1801EX	51	D	5
FW-1805EX	51	D	1
FW-7006EX	51	B	6
FW-7008EX	51	C	4
FW-7011EX	51	B	5
LE-703EX	51	J	3
ME-001EX	51	G	1
ME-002EX	51	G	5
ME-003EX	51	F	5
ME-004EX	51	F	1
ME-007EX	51	G	7
PA-038EX	51	F	2
PA-039EX	51	G	2
PA-181EX	51	G	4
PA-187EX	51	F	4
PA-389EX	51	F	6
PA-390EX	51	G	3
PA-1854EX	51	F	3
PS-090EX	51	I	1
PS-957EX	51	H	2
PS-959EX	51	H	1
PS-976EX	51	H	3
ST-442EX	51	F	7
ST-736EX	51	J	1
WG-657EX	51	A	1
WG-695EX	51	D	2
WG-960EX	51	A	2

Product Code	page, column, row
--------------	-------------------

Product Code	page, column, row
FW-656	27 G 4
FW-677	28 E 4
FW-788	24 B 3
FW-789	25 A 4
FW-795	28 C 3
FW-886	29 E 1
FW-887	29 G 3
FW-888	28 F 1
FW-889	28 G 3
FW-1020	29 F 3
FW-1021	27 F 4
FW-1022	29 A 2
FW-1023	27 B 2
FW-1036	30 E 3
FW-1037	30 B 4
FW-1039H	29 D 3
FW-1040H	29 E 4
FW-1113	29 A 4
FW-1121H	29 A 3
FW-1122	27 B 1
FW-1123	28 B 2
FW-1124	29 D 2
FW-1125	28 D 4
FW-1126	30 G 1
FW-1127	31 D 3
FW-1129	25 C 2
FW-1130H	25 C 3
FW-1133	30 C 3
FW-1134	30 A 1
FW-1135	30 E 1
FW-1136H	30 E 2
FW-1137	29 E 3
FW-1138	24 C 2
FW-1139H	24 C 3
FW-1207	24 E 2
FW-1208	24 D 1
FW-1209	24 B 2
FW-1210	24 G 3
FW-1211	25 A 3
FW-1212	27 A 2
FW-1213	26 D 2
FW-1214	25 B 2
FW-1215	26 D 3
FW-1216	31 A 2
FW-1217	24 F 4
FW-1218	26 F 2
FW-1255	24 E 1
FW-1256	25 D 1
FW-1257	27 A 3
FW-1258	25 C 1
FW-1259	26 E 1
FW-1261	24 B 4
FW-1262	25 G 1
FW-1265	27 A 1
FW-1266	26 D 1
FW-1269	25 G 2
FW-1271	24 F 3
FW-1272	25 G 4
FW-1273	26 E 4
FW-1275	31 B 2
FW-1276	28 C 2
FW-1277	29 C 2
FW-1278	27 E 1
FW-1279	25 F 3
FW-1280	28 D 3
FW-1281	28 G 1
FW-1282	30 B 3
FW-1283	28 A 2
FW-1285	25 D 4
FW-1286	27 B 3
FW-1287	26 C 3
FW-1288	30 G 3
FW-1289	25 E 1
FW-1290	31 A 4
FW-1291	25 B 3
FW-1293	25 F 2
FW-1294	26 D 4
FW-1296	27 C 2
FW-1297	30 B 1
FW-1301	31 B 3
FW-1302	26 C 2
FW-1304	26 A 2
FW-1306	27 D 1
FW-1307	26 A 3
FW-1331	28 C 4
FW-1681	25 F 1
FW-1683	24 A 3
FW-1734H	27 D 3
FW-1735H	27 F 1
FW-1736H	31 A 1

Product Code	page, column, row
FW-1737	28 C 1
FW-1738	28 E 3
FW-1740	31 G 3
FW-1743	28 A 4
FW-1744	29 C 3
FW-1745	25 A 2
FW-1746	30 F 1
FW-1750	25 D 3
FW-1751	31 E 1
FW-1752H	30 E 4
FW-1753H	31 D 1
FW-1754	26 B 2
FW-1755	27 D 2
FW-1757	31 G 4
FW-1758	24 A 2
FW-1761	24 A 1
FW-1762	31 D 4
FW-1763	27 F 3
FW-1765	24 A 4
FW-1766	25 B 4
FW-1767	26 C 1
FW-1770	26 G 2
FW-1771H	27 B 4
FW-1801	29 C 4
FW-1805	27 C 3
FW-1810	25 G 3
FW-1970	31 F 1
FW-1971	26 C 4
FW-1972	25 E 4
FW-1974	26 A 1
FW-1975	31 C 2
FW-1976	26 B 3
FW-1977	26 E 3
FW-1978	26 A 4
FW-1979	31 E 4
FW-1980	24 D 3
FW-1981	25 A 1
FW-1983	26 F 1
FW-1984	31 E 3
FW-1985	31 F 3
FW-1986	31 B 1
FW-1987	26 B 1
FW-1988	25 D 2
FW-7001	24 D 2
FW-7006	28 G 4
FW-7007	31 A 3
FW-7008	29 A 1
FW-7009	30 C 2
FW-7011	27 G 2
FW-7013	29 F 4
FW-7014	30 D 3
FW-7015	30 A 4
FW-7016	29 F 2
FW-7017	24 C 1

Product Code	page, column, row
<b>HG   High Gloss</b>	
HG-1201	48 L 6
HG-1205	48 A 1
HG-1511	49 G 6
HG-1994	48 C 5
HG-1995	40 E 4
HG-1996	49 F 5

Product Code	page, column, row
<b>HS   Mono Contrast</b>	
HS-1655	46 B 1
HS-1656	46 H 5

Product Code	page, column, row
<b>LE   Leather</b>	
LE-018	45 F 3
LE-517	45 G 3
LE-703	45 H 1
LE-783	45 H 2
LE-1104	45 H 3
LE-1105	45 F 1
LE-1106	45 G 5
LE-1108	41 D 4
LE-1109	41 F 2
LE-1171	45 H 4
LE-1228	46 H 3
LE-1229	46 F 4
LE-1231	46 H 4

Product Code	page, column, row
LE-1551	45 H 5
LE-1552	45 F 2
LE-1555	45 G 4
LE-2128	45 F 4
LE-2367	45 F 5
LE-2741	45 G 1
LE-2782	45 G 2

Product Code	page, column, row
<b>LW   Entertainment</b>	
LW-1081	46 A 1
LW-1083	39 G 3
LW-1084	39 A 5
LW-1085	38 E 2

Product Code	page, column, row
<b>LZ   Abstract</b>	
LZ-461	46 A 4
LZ-462	46 D 5
LZ-587	46 F 1

Product Code	page, column, row
<b>ME   Metallic</b>	
ME-147	41 D 2
ME-377	38 C 5
ME-379	38 H 1
ME-380	39 E 5
ME-388	38 D 4
ME-391	38 F 1
ME-396	38 E 5
ME-431	38 G 1
ME-432	38 C 1
ME-433	38 B 2
ME-486	39 C 4
ME-904	38 C 4
ME-1174	39 F 5
ME-1175	40 B 5
ME-1223	39 B 4
ME-1224	39 E 4
ME-1225	39 D 5
ME-1434	38 E 3
ME-1435	38 D 1
ME-1466	38 A 1
ME-1467	38 A 2
ME-1469	41 G 2
ME-1684	38 H 2
ME-1685	38 H 3
ME-1716	38 B 1
ME-1778	41 E 5
ME-1781	38 F 2
ME-1961	41 A 2
ME-1997	39 C 1
ME-2020	41 C 5
ME-2022	19 G 2
ME-2023	19 G 3
ME-2024	19 G 1
ME-2025	41 C 1
ME-2026	41 A 1
ME-2027	41 H 2
ME-2172	19 E 1
ME-2173	19 E 2
ME-2174	19 F 4
ME-2251MT	20 A 1
ME-2252MT	20 A 2
ME-2253MT	20 A 3
ME-2254MT	20 A 4
ME-2255MT	20 A 5
ME-2261	20 B 1
ME-2262	20 B 2
ME-2263	20 B 3
ME-2264	20 B 4
ME-2265	20 B 5
ME-2271	20 C 1
ME-2272	20 C 2
ME-2273	20 C 3
ME-2274	20 C 4
ME-2275	20 C 5

Product Code	page, column, row
<b>MW   Metallic Wood</b>	
MW-776	23 D 3
MW-777	23 D 4

Product Code	page, column, row
MW-1177	23 C 4
MW-1242	23 A 2
MW-1244	23 B 2
MW-1416	23 A 1
MW-1417	23 C 1
MW-1418	23 B 1
MW-1419	23 D 2
MW-1783	23 C 3
MW-1832	23 A 4
MW-1833	23 A 3
MW-1834	23 C 2

Product Code	page, column, row
<b>NU   Nuno / Textile</b>	
NU-1237	44 A 2
NU-1238	44 D 5
NU-1239	44 E 4
NU-1240	44 F 3
NU-1241	44 H 5
NU-1784	44 A 3
NU-1785	44 C 4
NU-1786	44 G 1
NU-1787	44 H 4
NU-1789	44 G 2
NU-1790	44 E 1
NU-1791	44 F 1
NU-1792	44 F 2
NU-1793	44 E 2
NU-1794	44 C 5
NU-1795	44 D 1
NU-1798	44 C 1
NU-1799	44 H 3
NU-1934MT	18 F 1
NU-1935MT	18 E 4
NU-1936MT	18 G 3
NU-1937MT	18 F 4
NU-1938MT	18 G 2
NU-1939MT	18 G 4
NU-1940MT	18 E 3
NU-1941MT	18 E 2
NU-1942MT	18 E 1
NU-1943MT	18 F 2
NU-2001	45 C 5
NU-2002	45 A 2
NU-2003	45 B 1
NU-2004	45 C 3
NU-2005	45 B 5
NU-2006	45 A 3
NU-2007	45 D 3
NU-2008	45 C 1
NU-2009	44 F 5
NU-2010	44 F 4
NU-2011	45 A 5
NU-2012	44 A 1
NU-2013	44 D 2
NU-2014	44 A 4
NU-2015	44 E 3
NU-2017	44 G 4
NU-2175MT	18 B 2
NU-2176MT	18 A 4
NU-2177	18 A 1
NU-2178	18 A 3
NU-2179	18 C 1

Product Code	page, column, row
<b>PA   Metallic</b>	
PA-036	40 B 4
PA-038	39 E 1
PA-039	39 B 5
PA-045	38 D 5
PA-046	39 A 3
PA-175	40 A 2
PA-177	40 B 3
PA-178	40 B 2
PA-180	39 A 1
PA-181	39 G 2
PA-183	39 F 2
PA-184	38 D 3
PA-185	38 F 3
PA-187	39 F 1
PA-320	39 E 2
PA-389	38 F 4
PA-390	39 G 1
PA-683	39 C 3

Product Code	page, column, row
<b>PC   Sand</b>	
PC-491	43 D 3
PC-672	43 A 3
PC-758	42 F 2
PC-760	42 G 1
PC-1178	43 E 2
PC-1179	43 E 1
PC-1181	42 D 4

Product Code	page, column, row
<b>PG   Abstract</b>	
PG-189	46 F 5
PG-190	46 E 5
PG-194	46 F 3
PG-195	46 E 4
PG-197	46 D 4

Product Code	page, column, row
<b>PS   Single Color</b>	
PS-022	48 H 2
PS-027	48 H 1
PS-031	49 A 2
PS-034	48 I 2
PS-042	49 A 1
PS-048	48 F 1
PS-073	48 F 2
PS-074	48 J 1
PS-075	48 G 1
PS-090	48 E 1
PS-091	48 F 3
PS-093	48 G 2
PS-096	49 B 1
PS-107	49 I 5
PS-110	48 K 2
PS-112	49 B 5
PS-116	49 C 2
PS-121	49 F 4
PS-134	49 H 1
PS-135	49 G 2
PS-139	49 J 2
PS-140	49 H 3
PS-141	49 I 1
PS-151	49 H 6
PS-281	49 C 4
PS-292	48 J 2
PS-293	49 J 5
PS-294	49 K 5
PS-503	48 A 3
PS-504	48 J 6
PS-506	49 G 3
PS-665	49 I 2
PS-668	49 I 3
PS-713	49 C 3
PS-719	49 B 2
PS-885	48 I 6
PS-900	49 G 5
PS-910	49 E 6
PS-912	49 F 1
PS-914	49 H 2
PS-920	49 F 3
PS-948	48 J 5
PS-949	48 G 5
PS-950	48 H 4
PS-952	48 E 6
PS-954	48 D 6
PS-955	48 C 6
PS-957	48 B 5
PS-959	48 A 4
PS-971	48 F 4
PS-975	48 C 4
PS-976	48 C 1
PS-982	49 A 5
PS-983	48 C 2
PS-992	48 I 5
PS-998	48 C 3
PS-999	48 L 4
PS-1005	48 J 3
PS-1008	49 F 6
PS-1009	49 H 5
PS-1010	49 F 2
PS-1183	48 K 5
PS-1184	48 E 3
PS-1185	48 D 2
PS-1186	48 D 1
PS-1187	48 B 2

Product Code	page, column, row
PS-1188	48 A 5
PS-1436	49 A 4
PS-1437	48 D 4
PS-1438	48 E 4
PS-1439	48 J 4
PS-1440	48 L 2
PS-1441	49 A 3
PS-1442	49 C 1
PS-1443	49 E 1
PS-1444	49 G 1
PS-1446	49 E 2
PS-1447	49 K 2
PS-1448	49 B 3
PS-1450	49 E 3
PS-1452	49 B 4
PS-1454	49 E 4
PS-1455	49 G 4
PS-1457	49 J 4
PS-1459	49 E 5
PS-1820	49 C 5
PS-1821	49 J 1
PS-1822	49 K 1
PS-1823	49 I 4
PS-1824	49 K 4
PS-1825	49 J 3
PS-1826	49 K 3
PS-1870MT	21 E 5
	48 K 6
PS-2060	49 H 4
PS-3091MT	21 A 3
	48 E 5
PS-3092MT	21 D 3
	48 F 6
PS-3093MT	21 A 5
	48 G 6
PS-3094MT	21 C 5
	48 K 4
PS-3095MT	21 C 2
	48 H 3
PS-3096MT	21 E 2
	48 I 3
PS-3097MT	21 E 4
	48 L 1
PS-3098MT	21 E 1
	48 I 1
PS-3099MT	21 A 4
	48 G 4
PS-3100MT	21 B 4
	48 H 5
PS-3101MT	21 D 4
	48 K 3
PS-3863MT	21 B 2
	48 G 3
PS-3864MT	21 A 2
	48 E 2
PS-3865MT	21 D 1
	48 B 6
PS-3866MT	21 B 3
	48 F 5
PS-3867MT	21 E 3
	48 K 1
PS-3869MT	21 B 5
	48 H 6
PS-3870MT	21 D 5
PS-3904MT	21 B 1
	48 A 2
PS-3989MT	21 A 1
	48 A 6

Product Code	page, column, row
<b>PT   Abstract</b>	
PT-345	46 E 3
PT-346	46 D 2
PT-347	46 E 2
PT-735	46 C 3

Product Code	page, column, row
<b>PW   Premium Wood</b>	
PW-2305MT	9 A 1
PW-2306MT	9 A 2
PW-2307MT	9 C 1
PW-2308MT	9 E 1
PW-2309MT	9 C 2
PW-2310MT	9 A 4
PW-2311MT	9 D 2
PW-2312MT	9 C 3

Product Code	page, column, row
PW-2313MT	9 B 4
PW-2314MT	8 F 1
PW-2315MT	9 D 3
PW-2316MT	9 F 1
PW-2317MT	9 F 3
PW-2318MT	9 G 3
PW-2319MT	9 F 4

Product Code	page, column, row
<b>PWF   Whiteboard</b>	
PWF-500	F3

Product Code	page, column, row
<b>RS   Entertainment</b>	
RS-1189	40 F 2
RS-1190	40 C 5

Product Code	page, column, row
<b>RT   Aged Metal</b>	
RT-1111	41 G 3
RT-1112	41 F 5
RT-1827	41 G 4

Product Code	page, column, row
<b>SE   Abstract</b>	
SE-567	46 C 5
SE-568	46 F 2
SE-570	46 D 3

Product Code	page, column, row
<b>SI   Silk</b>	
SI-1232	45 A 4
SI-1234	45 A 1
SI-1235	45 D 4
SI-1613	44 G 3
SI-1686	44 B 3
SI-1688	45 B 4
SI-1689	45 B 2

Product Code	page, column, row
<b>ST   Stone</b>	
ST-442	43 G 5
ST-736	43 A 2
ST-737	43 B 2
ST-1195	43 C 1
ST-1586	42 H 1
ST-1587	43 F 1
ST-1588	42 C 4
ST-1828	42 C 3
ST-1829	43 C 3
ST-1830	43 H 5
ST-1831	42 A 1
ST-1911MT	16 E 2
ST-1912MT	16 F 3
ST-1914MT	16 D 1
ST-1915MT	16 F 2
ST-1916MT	16 G 3
ST-1918MT	16 E 1
ST-1919MT	16 D 2
ST-1920MT	16 F 4
ST-1927MT	16 G 2
ST-2170MT	16 F 1
ST-2171MT	16 D 3

Product Code	page, column, row
<b>SU   Suede</b>	
SU-2231MT	19 A 3
SU-2232MT	19 C 2
SU-2233MT	19 A 1
SU-2234MT	19 A 4
SU-2235MT	19 B 4

Product Code	page, column, row
<b>TE   Advanced Metallic</b>	
TE-1650	40 D 2
TE-1651	40 E 2
TE-1652	40 D 4
TE-1653	40 F 4
TE-1713	40 E 3
TE-1714	40 C 4

Product Code	page, column, row
<b>VM   Metallic</b>	
VM-168	40 A 1
VM-305	39 D 4
VM-306	39 B 1
VM-381	39 D 1
VM-383	39 B 2
VM-452	41 C 2
VM-800	38 H 4
VM-1487	39 D 2
VM-1488	39 G 5
VM-1489	38 G 5
VM-1691	38 B 5
VM-1692	39 C 2
VM-1693	39 E 3
VM-1694	39 F 4
VM-1695	39 F 3
VM-1855MT	20 G 1
VM-1862MT	20 H 2
VM-1990MT	20 G 2
VM-2034	41 F 4
VM-2035	41 C 3
VM-2036	41 H 4
VM-2037	41 E 4
VM-2038	41 E 3
VM-2039	41 H 1
VM-2090	41 A 4
VM-2121	39 D 3
VM-2122	38 G 4

Product Code	page, column, row
<b>WG   Wood Grain</b>	
WG-156	36 D 5
WG-157	35 G 2
WG-159	36 B 4
WG-166	32 F 3
WG-242	33 G 2
WG-243	33 D 1
WG-247	32 B 3
WG-248	33 A 1
WG-250	33 D 3
WG-256	33 C 3
WG-364	34 D 3
WG-364GN	34 H 2
WG-376	32 D 3
WG-417	34 D 5
WG-428	36 H 5
WG-453	33 C 2
WG-467	32 C 5
WG-478	33 B 1
WG-629	33 H 3
WG-657	32 A 1
WG-664	36 D 4
WG-693	36 B 2
WG-694	34 C 4
WG-695	35 E 5
WG-696	32 G 5
WG-697	34 B 5
WG-699	33 F 2
WG-709	33 H 2
WG-763	34 B 1
WG-763GN	34 F 2
WG-765GN	34 G 2
WG-831	33 H 1
WG-832	33 A 5
WG-833	33 A 4
WG-835	33 C 1

Product Code	page, column, row
WG-836	33 G 4
WG-837	33 B 3
WG-841	34 C 1
WG-845	33 E 4
WG-846	33 E 5
WG-854	33 H 5
WG-857	33 G 1
WG-865	34 B 2
WG-877	33 E 2
WG-878	33 H 4
WG-879	34 D 1
WG-940	34 D 4
WG-941	34 B 4
WG-943	34 B 3
WG-946	33 A 2
WG-947	32 H 5
WG-960	32 E 3
WG-964	32 E 5
WG-1044	36 E 2
WG-1046	32 B 4
WG-1050	36 H 4
WG-1052	36 E 5
WG-1057	35 H 1
WG-1058	33 G 5
WG-1063	36 D 3
WG-1064	36 A 2
WG-1066	36 C 5
WG-1067	32 A 4
WG-1070	36 G 3
WG-1071	32 A 5
WG-1140	34 A 5
WG-1141	32 F 2
WG-1142	34 A 4
WG-1143	32 G 1
WG-1144	32 H 2
WG-1146	36 A 1
WG-1147	36 B 3
WG-1196	35 E 4
WG-1219	33 B 2
WG-1220	32 D 4
WG-1221	33 B 4
WG-1336	35 C 2
WG-1337	32 H 4
WG-1339	32 B 5
WG-1340	32 E 1
WG-1342	35 D 2
WG-1343	32 C 1
WG-1344	32 D 1
WG-1346	33 E 1
WG-1348	35 G 1
WG-1349	35 G 4
WG-1350	36 C 2
WG-1351	36 E 4
WG-1353	35 A 2
WG-1358	33 F 3
WG-1359	34 C 2
WG-1360	34 A 2
WG-1364	36 D 2
WG-1365	32 A 2
WG-1368	35 E 1
WG-1369	35 F 3
WG-1370	35 F 5
WG-1371	35 G 3
WG-1372	35 G 5
WG-1373	36 C 4
WG-1374	36 E 3
WG-1375	34 C 3
WG-1376	36 F 3
WG-1378	32 E 2
WG-1380	33 C 5
WG-1382	33 G 3
WG-1390	36 A 5
WG-1391	36 F 4
WG-1392H	32 G 3
WG-1703	35 A 1
WG-1704	35 H 5
WG-1705	32 C 3
WG-1706	35 F 2
WG-1708	35 E 3
WG-1709	32 B 1
WG-1710	32 G 4
WG-1711GN	34 F 1
WG-1712GN	34 H 1
WG-1812	33 A 3
WG-1814	33 D 5
WG-1815	33 F 4
WG-1816	36 B 1
WG-1818	36 D 1
WG-1835	36 G 5
WG-1836	36 C 1

Product Code	page, column, row
WG-1837	32 H 3
WG-1838	32 F 1
WG-1840	32 H 1
WG-1841	35 H 3
WG-1845	33 F 1
WG-1846	32 B 2
WG-1848	35 E 2
WG-2019	35 H 2
WG-2033	35 H 4
WG-2041	36 G 4
WG-2042	35 F 1
WG-2047	36 H 3
WG-2048	36 C 3
WG-2049	32 C 2
WG-2070	32 D 5
WG-2071	34 A 1
WG-2072	35 C 1
WG-2073	32 E 4
WG-2074	35 D 3
WG-2075	35 D 5
WG-2076	32 C 4
WG-2077	36 E 1
WG-2078	32 A 3
WG-2080H	34 A 3
WG-2081H	33 D 4
WG-2082H	35 D 1
WG-2083H	32 D 2
WG-2084H	35 F 4
WG-2085	32 F 4
WG-2086	35 B 1
WG-2087	35 D 4
WG-2088	35 B 2
WG-2115	33 F 5
WG-2244	33 E 3
WG-2246	33 B 5
WG-2705	32 G 2
WG-2707	36 F 5
WG-2839	33 D 2
WG-2860	32 F 5
WG-2862	34 D 2
WG-2944	33 C 4
WG-7022	34 C 5
WG-7023	36 A 4
WG-7024	36 A 3
WG-7029	36 B 5

Product Code	page, column, row
<b>WH   Whiteboard</b>	
WH-111	F3

# Index

Product Code	page, column, row	
<b>Alder</b>		
WG-841	34	C 1
<b>Anirops</b>		
FW-232	29	D 1
FW-888	28	F 1
FW-889	28	G 3
<b>Ash</b>		
DW-1895MT	13	C 4
DW-1896MT	12	G 2
DW-1894MT	10	C 2
DW-1898MT	12	C 1
DW-1903MT	10	C 1
DW-2201MT	10	D 2
FW-336	24	C 4
FW-337	26	E 2
FW-1258	25	C 1
FW-1259	26	F 1
FW-1293	25	F 2
FW-1294	26	D 4
FW-1296	27	C 2
FW-1297	30	B 1
FW-1972	25	E 1
WG-156	36	D 5
WG-467	32	C 5
WG-947	32	H 5
WG-960	32	E 3
WG-1143	32	G 1
WG-1343	32	C 1
WG-1344	32	D 1
WG-1346	33	E 1
WG-1348	35	G 1
WG-1349	35	G 4
WG-1350	36	C 2
WG-1351	36	E 4
WG-1353	35	A 2
WG-2073	32	E 4
WG-2074	35	D 3
WG-2075	35	D 5
WG-2839	33	D 2
<b>Beech</b>		
DW-2198MT	10	D 1
FW-327	28	A 1
WG-857	33	G 1
<b>Birch</b>		
FW-1211	25	A 3
FW-1212	27	A 2
FW-1213	26	D 2
<b>Bird's Eye Maple</b>		
WG-763	34	B 1
WG-763GN	34	F 2
WG-765GN	34	G 2
<b>Black Limba</b>		
WG-1196	35	E 4
<b>Bubingha</b>		
FW-1740	31	G 3
WG-364	34	D 3
WG-364GN	34	H 2
<b>Camphor Tree</b>		
DW-2209MT	11	A 4
DW-2216MT	13	D 2
FW-7011	27	G 2
<b>Cedar</b>		
DW-2229MT	13	F 3
WG-846	33	E 5
<b>Cherry</b>		
DW-1901MT	11	A 2
DW-2202MT	10	D 3
FW-234	28	B 1
FW-612	28	E 1
FW-655	28	E 2
FW-1279	25	F 3
FW-1280	28	D 3
FW-1281	28	G 1
FW-1282	30	B 3
FW-1283	28	A 2
FW-1737	28	C 1
FW-1738	28	E 3
WG-629	33	H 3
WG-865	34	B 2
WG-877	33	E 2
WG-878	33	H 4
WG-1057	35	H 1
WG-1058	33	G 5
WG-1142	34	A 4
WG-1360	34	A 2
WG-1364	36	D 2
WG-1375	34	C 3
WG-1815	33	F 4
WG-1845	33	F 1
WG-1846	32	B 2
<b>Chestnut</b>		
DW-1875MT	10	C 4
DW-1876MT	11	B 3
DW-2207MT	11	A 3
FW-1217	24	F 4
FW-1218	26	F 2
FW-1810	25	G 3
FW-1976	26	B 3
FW-1977	26	E 3
FW-1988	25	D 2
PW-2306MT	9	A 2
WG-2070	32	D 5
WG-2071	34	A 1
WG-2072	35	C 1
<b>Design Wood</b>		
FW-1757	31	G 4
FW-1758	24	A 2
FW-1761	24	A 1
FW-1762	31	D 4
MW-1177	23	C 4
MW-1416	23	A 1
MW-1417	23	C 1
WG-417	34	D 5
WG-428	36	H 5
WG-657	32	A 1
<b>Ebony</b>		
FW-643	30	D 2
FW-653	30	D 1
MW-776	23	D 3
MW-777	23	D 4
MW-1242	23	A 2
MW-1244	23	B 2

Product Code	page, column, row	
WG-664	36	D 4
WG-1070	36	G 3
WG-1071	32	A 5
WG-7029	36	B 5
<b>Elm</b>		
DW-1871MT	12	G 3
DW-1872MT	12	A 2
FW-1214	25	B 2
FW-1215	26	D 3
FW-1216	31	A 2
FW-1265	27	A 1
FW-1266	26	D 1
FW-1681	25	F 1
FW-1746	30	F 1
FW-7001	24	D 2
MW-1783	23	C 3
PW-2316MT	9	F 1
WG-1044	36	E 2
WG-1046	32	B 4
<b>Hard Maple</b>		
WG-242	33	G 2
WG-243	33	D 1
<b>Hickory</b>		
FW-1978	26	A 4
FW-1979	31	E 4
PW-2305MT	9	A 1
WG-1063	36	D 3
WG-1064	36	A 2
<b>Hinoki</b>		
FW-1750	25	D 3
FW-1980	24	D 3
FW-1981	25	A 1
WG-453	33	C 2
WG-845	33	E 4
<b>Ipe</b>		
FW-1974	26	A 1
FW-1975	31	C 2
<b>Kaya</b>		
WG-1052	36	E 5
<b>Magnolia</b>		
FW-1138	24	C 2
FW-1139H	24	C 3
WG-1712GN	34	H 1
<b>Mahogany</b>		
FW-677	28	E 4
FW-886	29	E 1
FW-887	29	G 3
FW-1037	30	B 4
FW-1040H	29	E 4
FW-1137	29	E 3
FW-7016	29	F 2
WG-1146	36	A 1
WG-1816	36	B 1
<b>Maple</b>		
DW-1873MT	11	B 2
DW-1874MT	11	E 3
DW-2200MT	10	A 4
DW-2228MT	13	F 1
FW-334	30	F 2
FW-1261	24	B 4
FW-1262	25	G 1
WG-831	33	H 1
WG-832	33	A 5
WG-833	33	A 4
WG-835	33	C 1
WG-836	33	G 4
WG-837	33	B 3
WG-879	34	D 1
WG-1378	32	E 2
WG-1814	33	D 5
<b>Oak</b>		
DW-1877MT	11	E 1
DW-1878MT	11	B 1
DW-1879MT	13	A 2
DW-1883MT	11	A 1
DW-1884MT	11	G 3
DW-1887MT	13	E 4
DW-1898MT	10	C 3
DW-1899MT	12	C 1
DW-1897MT	11	C 3
DW-1896MT	13	G 2
DW-1993MT	10	E 4
DW-2199MT	10	F 4
DW-2204MT	10	F 3
DW-2205MT	10	F 3
DW-2206MT	10	G 3
DW-2208MT	11	C 1
DW-2210MT	11	C 4
DW-2220MT	12	E 3
DW-2223MT	12	C 2
DW-2224MT	11	E 4
DW-2225MT	12	C 4
DW-2226MT	12	C 3
DW-2227MT	12	G 4
FW-236	27	A 4
FW-237	28	A 3
FW-625	30	A 3
FW-627	30	G 2
FW-798	24	B 3
FW-799	25	A 4
FW-1127	31	D 3
FW-1129	25	C 2
FW-1130H	25	C 3
FW-1255	24	E 1
FW-1256	25	D 1
FW-1257	27	A 3
FW-1269	25	G 2
FW-1285	25	D 4
FW-1286	27	B 3
FW-1287	26	C 3
FW-1288	30	G 3
FW-1289	25	E 1
FW-1290	31	A 4
FW-1291	25	B 3
FW-1301	31	B 3
FW-1304	26	A 2
FW-1306	27	D 1
FW-1765	24	A 4
FW-1766	25	B 4
FW-1767	26	C 1
FW-1770	26	G 2
FW-1986	31	B 1
FW-1987	26	B 1
FW-7017	24	C 1
MW-1832	23	A 4
MW-1833	23	A 3
MW-1834	23	C 2
PW-2307MT	9	C 1
PW-2308MT	9	E 1
PW-2309MT	9	C 2

Product Code	page, column, row	
PW-2310MT	9	A 4
PW-2311MT	9	D 2
WG-166	32	F 3
WG-256	33	C 3
WG-376	32	D 3
WG-695	35	E 5
WG-696	32	G 5
WG-697	34	B 5
WG-854	33	H 5
WG-943	34	B 3
WG-964	32	E 5
WG-1050	36	H 4
WG-1144	32	H 2
WG-1219	33	B 2
WG-1220	32	D 4
WG-1221	33	B 4
WG-1339	32	B 5
WG-1340	32	E 1
WG-1342	35	D 2
WG-1358	33	F 3
WG-1359	34	C 2
WG-1710	32	G 4
WG-1835	36	G 5
WG-1838	32	F 1
WG-2047	36	H 3
WG-2048	36	C 3
WG-2049	32	C 2
WG-2076	32	C 4
WG-2077	36	E 1
WG-2085	32	F 4
WG-2086	35	B 1
WG-2087	35	D 4
WG-2088	35	B 2
WG-2115	33	F 5
WG-2944	33	C 4
<b>Olive</b>		
FW-1278	27	E 1
<b>Padauk</b>		
FW-240	29	F 1
FW-619	29	G 1
WG-1147	36	B 3
WG-7024	36	A 3
<b>Paldao</b>		
FW-324	31	C 3
<b>Pear</b>		
WG-699	33	F 2
WG-946	33	A 2
WG-1382	33	G 3
WG-2244	33	E 3
WG-2246	33	B 5
<b>Pine / Larch</b>		
DW-2219MT	12	A 3
FW-641	31	E 2
FW-1307	26	A 3
FW-1970	31	F 1
FW-1971	26	C 4
WG-2078	32	A 3
<b>Plum</b>		
FW-1036	30	E 3
WG-940	34	D 4
WG-1066	36	C 5
WG-1067	32	A 4
<b>Primavera</b>		
WG-693	36	B 2
WG-694	34	C 4
<b>Redwood</b>		
MW-1418	23	B 1
MW-1419	23	D 2
<b>Rosewood</b>		
FW-1135	30	E 1
FW-1136H	30	F 2
FW-7013	29	F 4
FW-7014	30	D 3
WG-159	36	B 4
<b>Silver Heart</b>		
WG-250	33	D 3
<b>Sina</b>		
WG-1812	33	A 3
<b>Slimline</b>		
FW-522	30	F 3
<b>Sycamore</b>		
WG-247	32	B 3
WG-248	33	A 1
WG-478	33	B 1
WG-709	33	H 2
WG-1380	33	C 5
WG-1711GN	34	F 1
<b>Tagayasan</b>		
WG-1818	36	D 1
<b>Teak</b>		
DW-1902MT	10	D 4
FW-1039H	29	D 3
FW-1124	29	D 2
FW-1125	28	D 4
FW-1271	24	F 3
FW-1272	25	G 4
FW-1273	26	E 4
FW-1302	26	C 2
FW-1745	25	A 2
FW-1805	27	C 3
FW-7007	31	A 3
FW-7015	30	A 4
WG-157	35	G 2
WG-1140	34	A 5
WG-1141	32	F 2
WG-1376	36	F 3
WG-7022	34	C 5
WG-7023	36	A 4
<b>Tineo</b>		
FW-1275		



3M Commercial Solutions  
3M Center, Building 220-12E-04  
St. Paul, MN 55144-1000

Phone 888-650-3497  
Web 3M.com/DINOC

Ver.1

3M, Comply, DI-NOC and Sharpshooter are trademarks of 3M Company.  
All other trademarks are property of their respective owners.  
Please recycle. Printed in USA. © 3M 2020. All rights reserved.



78-8134-0903-0  
JR-4210-1525-6  
DIN-402-A