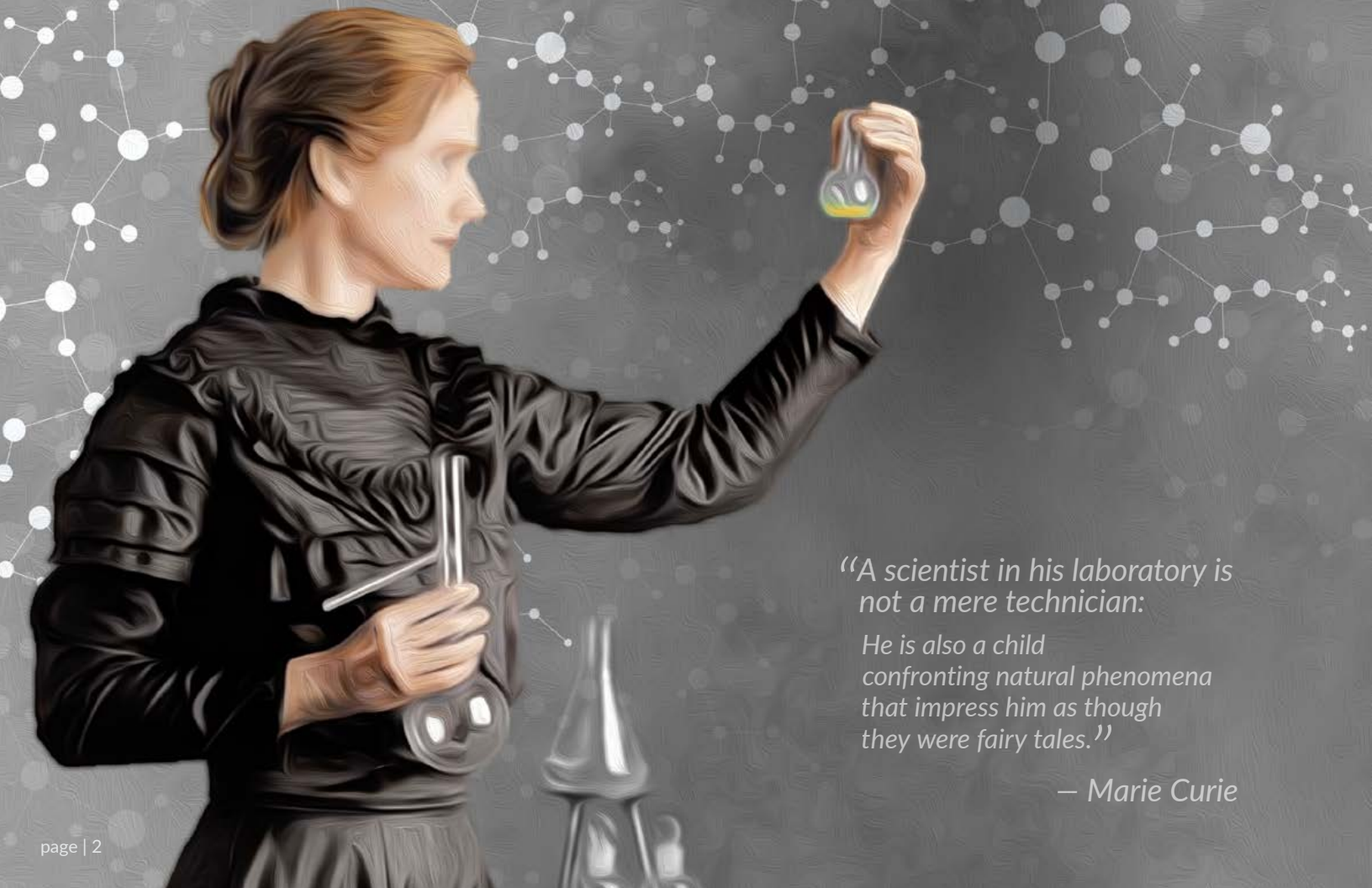




Discover *LabCoach*



*“A scientist in his laboratory is
not a mere technician:*

*He is also a child
confronting natural phenomena
that impress him as though
they were fairy tales.”*

— Marie Curie



The Art of Teaching Science

Inspiring Future Generations of Leaders

Science represents the first letter of the STEM/STEAM concept and has an essential role in its curriculum. When we talk about designing science rooms, it is always our goal to create spaces that embrace this approach. Student-centered environments that inspire innovation and experimentation, provide teachers with the resources they need to encourage curiosity, and awaken their students' passion for exploration. Designed well, our science rooms support teachers in creating experiences that cultivate critical thinking and promote life-long learning.

Science education is an art form, and LabCoach by Case Systems presents the ideal canvas by offering collaborative state-of-the-art science room solutions. Teachers can be confident that their students are in a safe and ideal place to learn and explore.

"Ventilation?"

"Where can chemicals be kept safely?"

"Glassware storage?"

"Accessibility?"

"Eyewash stations?"

"Set up and tear down?"

Design with Purpose

Special Attention for Science Classrooms

How a science room is designed can make teaching easier or harder. All classrooms should be built with students' learning in mind, but science rooms come with their own set of needs:

- Prioritize safety.
- Encourage collaboration through smart design.
- Provide abundant storage to organize and protect laboratory equipment and substances.
- Effectively position workstations to maximize efficiency and increase free space to perform experiments, as well as lecture.
- Ensure an adequate number of science rooms are available for teachers to use.
(One science room per science teacher is a good rule of thumb.)

"Microscope storage?"

LabCoach

by Case Systems

The Expert by Your Side

Choosing the right team to craft your science room can be challenging. LabCoach by Case Systems brings together years of knowledge from designing K-12 classrooms to college and professional labs. We understand the journey from student to professional and emphasize durable materials and smart layouts.

Thanks to our longstanding partnerships with our nationwide dealer organizations, we offer expert advice, exceptional service, and innovative design, and top-notch installation—all-in-one.

Enjoy the benefits of a
perfectly planned & executed
science room.



Professional



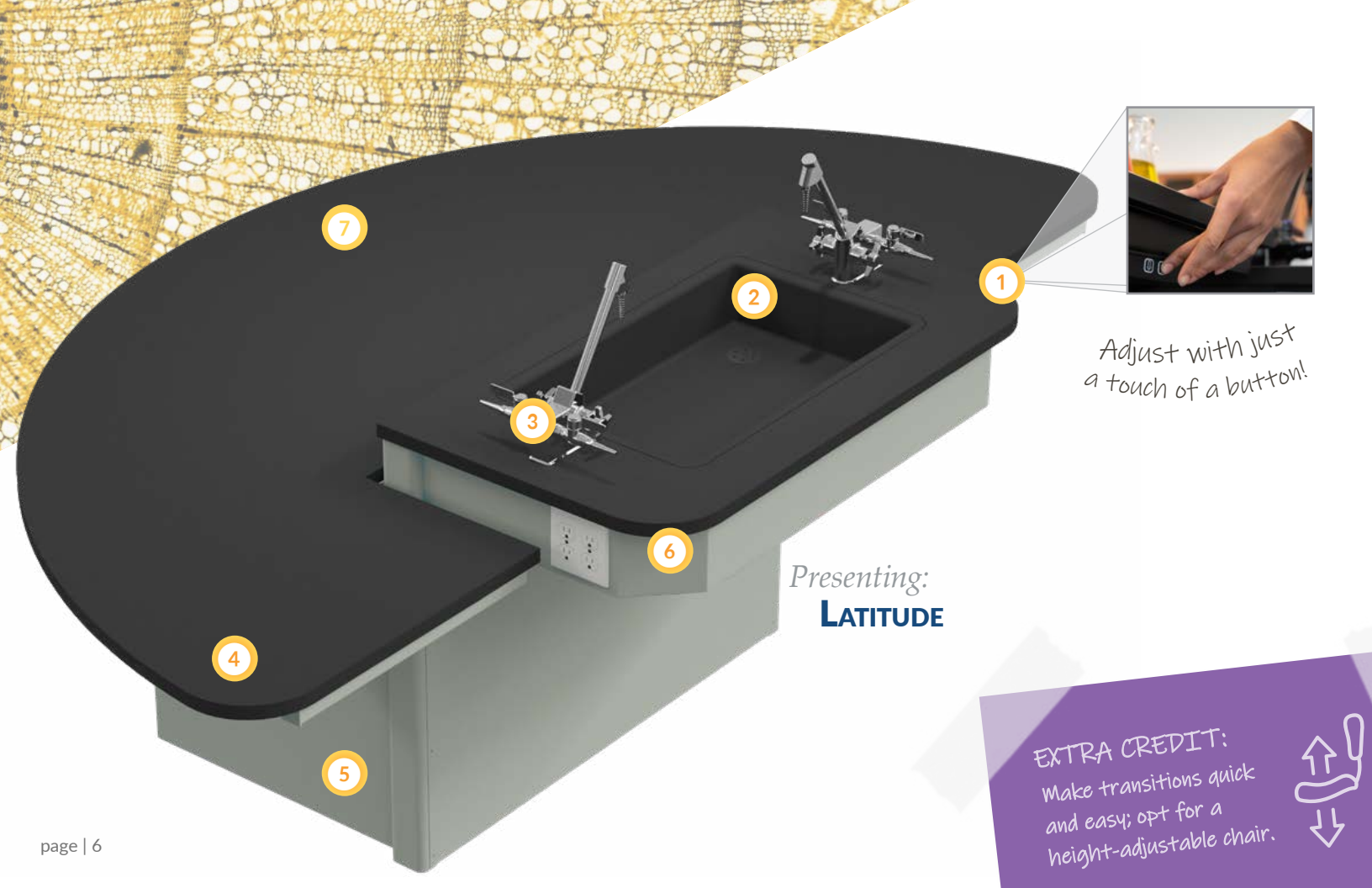
Higher Ed



High School



Elementary STEM



Adjust with just
a touch of a button!

Presenting:
LATITUDE

EXTRA CREDIT:
Make transitions quick
and easy; opt for a
height-adjustable chair.



Gain More Latitude

Elevate Science Teaching and Learning Experiences

Latitude Lab Table Highlights:

1. Adapt to today's science curriculum with ease; transition smoothly from lectures to labs with our electric height-adjustable options. Adjust from 30" to 36" quickly, maximizing class time and maintaining organization.
2. Save time and optimize flow by offering sinks at each student table. (Configurations without sink also available.)
3. The Latitude table seamlessly incorporates essential utilities like gas, water, and power, ensuring safe experiments and hassle-free connections.
4. Choose from industry-standard work surfaces in epoxy or phenolic resin. (Other surface types can be provided upon request.)
5. Create inspiring and robust environments that support and withstand student curiosity. Match new or preexisting designs, by choosing metal or plastic laminate base pedestal enclosure panels – available in a variety of colors and patterns.
6. Meet ADA sink standards in your classroom by incorporating a sink in your setup. (The sink design complies with ADA standards at a height of 34 inches.)
7. Comfortably seat groups of 4 students in a collaborative learning environment.



See dealer for a
FREE consultation!

Designing Efficient Science Spaces

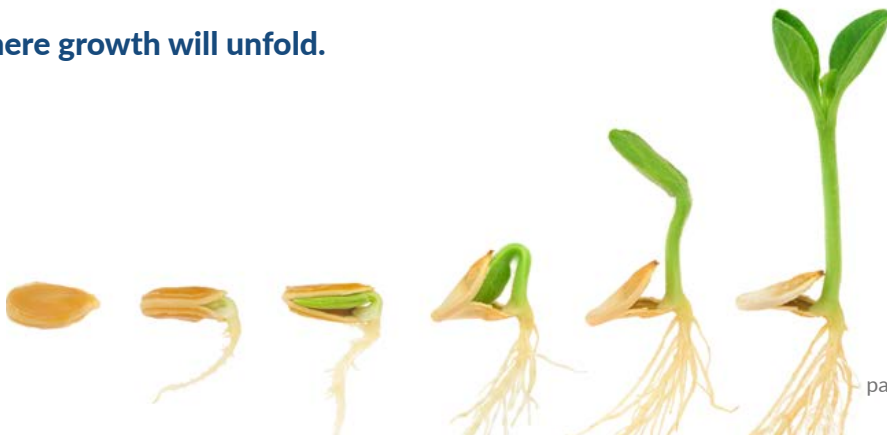
Tailored Labs to Suit Your Specific Needs

A thoughtfully designed science room ensures that educators and students can concentrate on their lessons and experiments, rather than wasting time searching for materials, jostling for space, or grappling with the shift from lectures to hands-on activities.

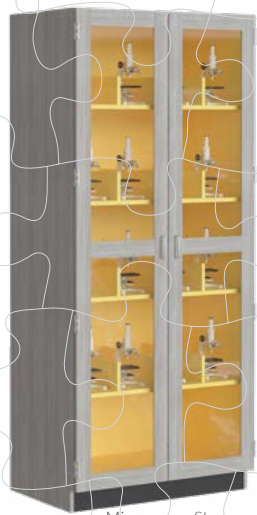
With our LabCoach experts, you don't buy off the rack. We delve into the best classroom design practices, covering essentials like chemical-resistant surfaces, emergency facilities, fume hoods, and smart storage solutions.

The LabCoach range by Case Systems comes with personalized guidance from our extensive network of regional dealers and skilled professionals. Benefit from their collective knowledge and experience in crafting spaces that truly cater to both educators and learners.

Together, we'll create spaces where growth will unfold.



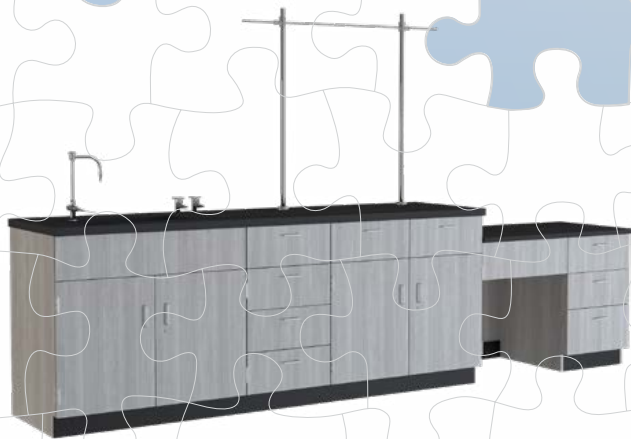
Fit Perfectly with LabCoach



Microscope Storage




Safety Features



Teachers' Module



Mobile Storage



Integrating individual elements to
achieve one perfect learning space.

Case Systems offers a wide variety
of products, information and
support materials.

Visit casesystems.com for a
complete catalog of products,
specifications, and photo galleries.

Lecture &
Demonstration

Storage

Safety

Designed and built - Just for you!

Case Systems

The Quality is Built in.

Not all casework is created equal.

The design process, materials used, finishes and manufacturing standards all affect the final product. Every decision is vital to getting the most value for your investment. You deserve furniture and storage that meets your demands for quality and durability and will enhance your working environment for years to come. At Case Systems, we're committed to working with you to find the right materials—and the right solution for your space and budget.

Competitive Pricing

In an era of tight budgets, we offer a wide range of products. We work closely with you to meet your project needs, while ensuring that you remain within your budget. With laminate casework you can create stunning designs without breaking the bank.

Certifications & Accreditations

There is a peace-of-mind that comes when the choice of quality is made. Our custom-made casework is extremely durable and designed to withstand a variety of uses while sustaining a high level of performance. Case Systems has been certified under the Quality Certification Program (QCP) of the Architectural Woodworking Institute (AWI) to produce custom and premium grade, the highest quality casework. We offer optional SEFA 8 Certified casework construction methods. We are pushing ourselves to go beyond what is required to deliver sustainable products and practices. In fact, many of our products contribute to a building's Leadership in Energy and Environmental Design (LEED®) certification. If your project calls for chain of custody, we have the right products available upon request.

Customer Focus and Creative Solutions

As a high-volume Division 12 casework manufacturer you expect from us efficient, high-quality solutions that are repeatable over many projects. What you might not expect are creative solutions that are designed for your specific application. This is exactly the flexibility and customer focus that sets us apart. We listen to your needs and put our decades of experience to work — for you!

Continuous Education

Case Systems is the expert in laminate casework and we are a provider in the AIA CES program. We offer Lunch&Learn sessions throughout the country and would love to treat your team to an educational luncheon.



Peace of Mind: Warranty

With decades of experience in manufacturing the finest and most durable line of casework products, we know how carefully it is engineered and how well it holds up in daily life. This is why we confidently back our cabinets up with a 5-year Guarantee and Limited Warranty.

Upgrade to Laminate

When we say upgrade to laminate we mean it! Laminate cabinets are versatile, durable and beautiful. With a huge selection of colors, woodgrain, and other patterns, there is a perfect choice for everyone. When designing an environment, you want a material that doesn't limit your creativity and gives you lots of choices. Choose plastic laminate: **BOLD. BEAUTIFUL. STRONG!**



SEFA Chemical Test Comparison

In testing against Scientific Equipment and Furniture Association (SEFA) standards, both high-pressure laminate and thermally fused melamine outperformed laboratory-grade painted steel or wood.

Rooms to grow



Cleveland Heights High School | Ohio



Olathe West High School | Kansas



State College High School | Pennsylvania



Valparaiso High School | Indiana



Case Systems, Inc.

2700 James Savage Rd, Midland, MI 48642

Phone: 989.496.9510 | Follow Us:    

info@casesystems.com | casesystems.com



Disclaimer: Although this brochure is compiled with great care to ensure that the information is up-to-date and accurate, Case Systems, Inc. cannot be held liable for the accuracy and comprehensiveness of the information in this brochure. Company names and logos are the trademarks of their respective holders.