

**Interpon**<sup>®</sup>

POWDER COATINGS

**Architectural**

# Futura Collection 2026-2029

Connecting the past, present and future



Your imagination starts with our finish

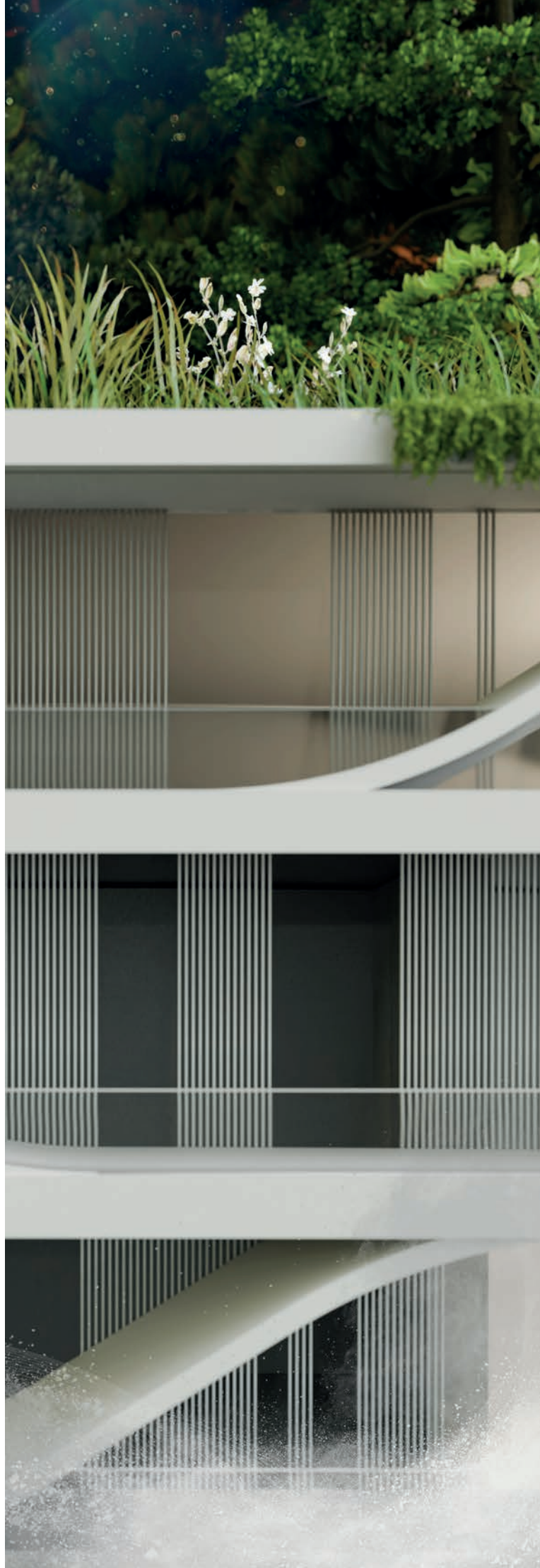
**AkzoNobel**

## Futura Collection 2026-2029

# The beauty of the past; the excitement of the future

Being agile, and having the ability to adapt to your environment, helps you achieve the best out of life. That doesn't mean letting go of what matters to you. It means finding a balance, focusing on a common goal, and discovering what unites us rather than what keeps us apart. A bridge over which we can journey to a shared vision.

It's the reasoning behind our Futura Collection 2026-2029, two palettes that offer a compromise between two worlds: a world grounded in a sense of comfort and calm; and a world of adventure, that can carry your imagination further, as far as you want to go, safe in the knowledge you can always return. Two palettes with colors to match your mood. Versatile finishes in coarse and fine textures with metallic effects to sparkle and shine that give you the freedom to express how you feel, and the confidence that comes from a range with proven superdurability to withstand the passage of time. Discover our Futura Collection of Interpon powder coatings for 2026-2029 and how your vision of the past and the present may influence how you imagine the future.



# High Serenity

Our first palette of colors comprises soothing tones that reflect the nature around us, that anchor us through enduring hues of soft browns and subtle shades of calming metals and warm stone. It's a palette that positively embraces light and shade, to match moods and environments.



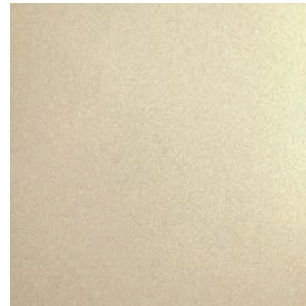
**Bodrum**

Y2349F



**Yazd Sablé**

YW370F



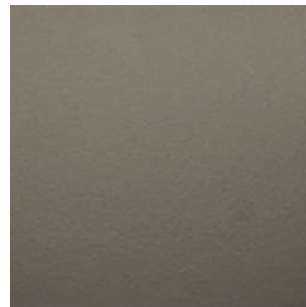
**Nivora**

14200I



**Balos**

14359I



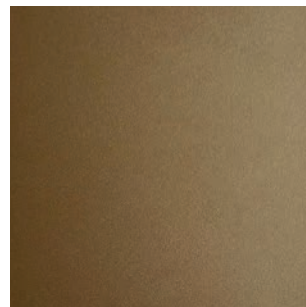
**Sydney**

Y220RI



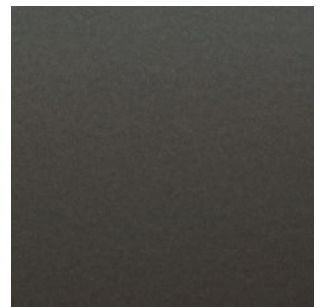
**Gris 2500 Sablé**

YW358F



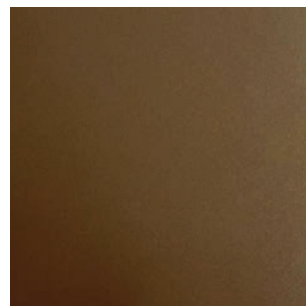
**Orisona**

12377I



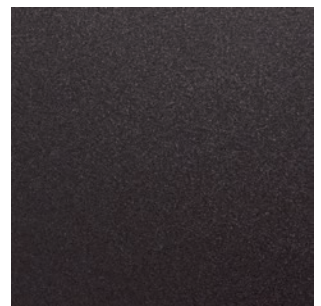
**Pachuca**

Y220PI



**Aeris**

12252I



**Brun 2650 Sablé**

YW366F



**Sumela** Y2208I



**Karako** Y2321I



**Silver** YW206F



**Gris 2800 Sablé** YW356F



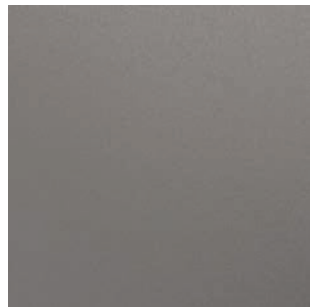
**Gris 2150 Sablé** YW365F



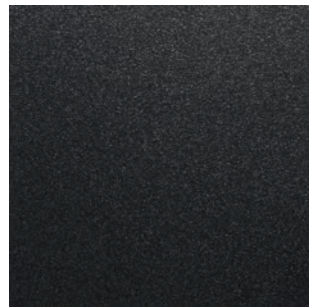
**Galet** YX050F



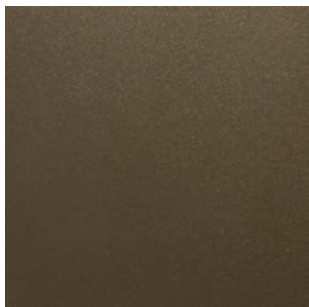
**Vicus** 14350I\*



**Pyrite** YW207F



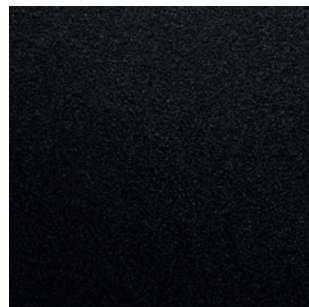
**Noir 2100 Sablé** YW359F



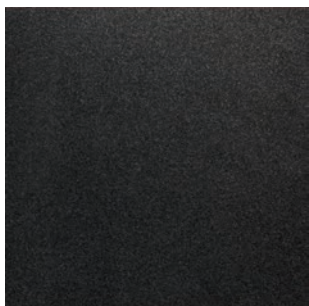
**Bronze** YW283F



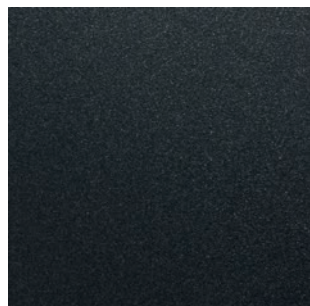
**Gris 2900 Sablé** YW355F



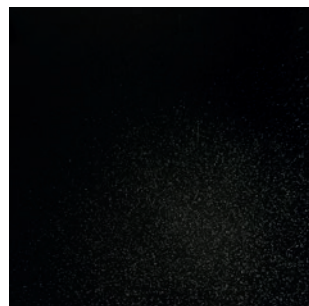
**Noir 2300 Sablé** YW383I



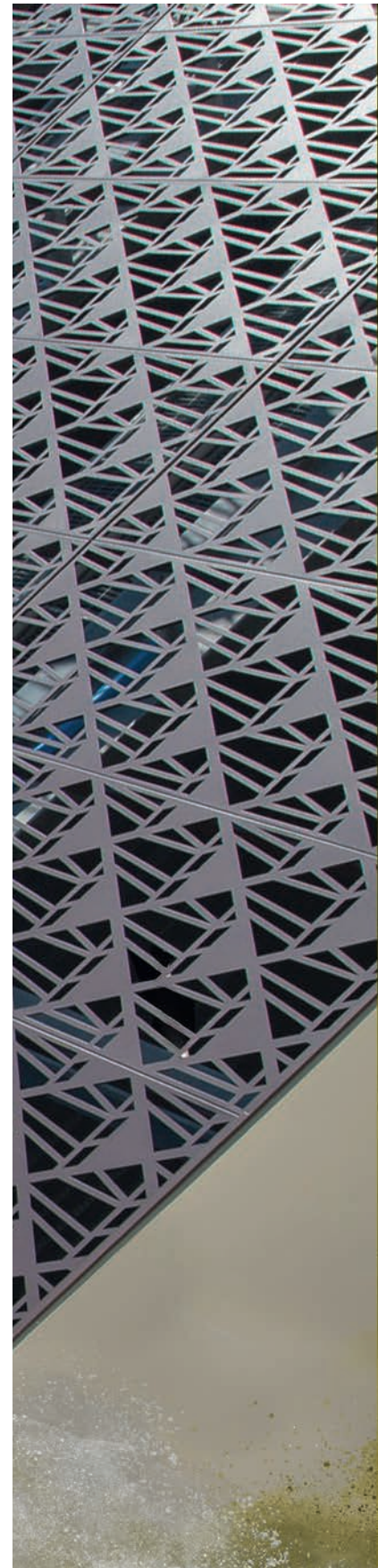
**Manganese** YW280F



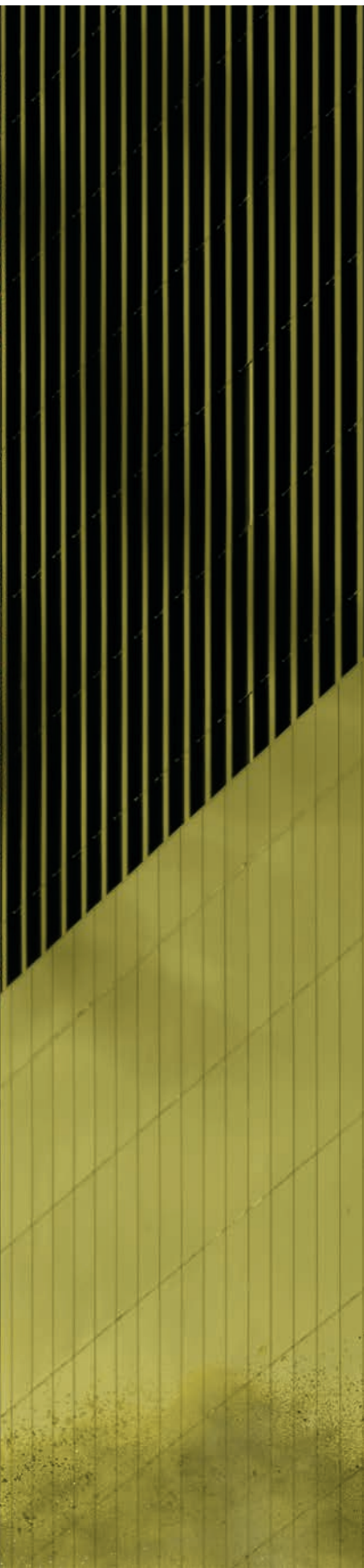
**Noir 2200 Sablé** YW360F



**Celastro** 12000I



\*Coarser texture effect



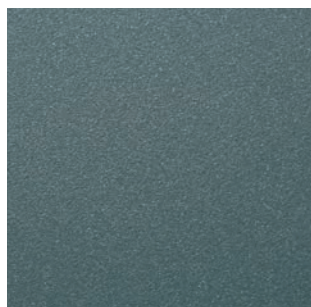
**Starlight Sablé** YX353F



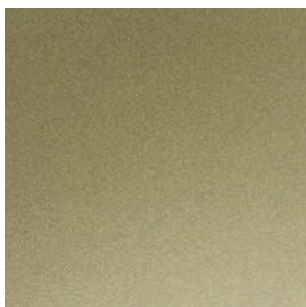
**Lichen** Y4326I



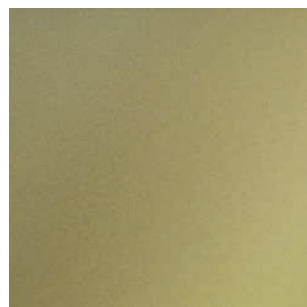
**Aurosa** 1224AI



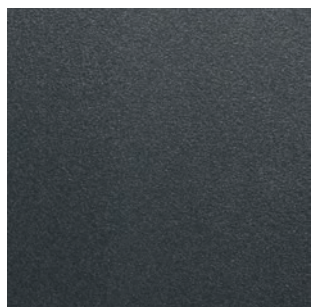
**Baku** Y2375I



**Apulia** 14356I



**Luxor** Y220TI



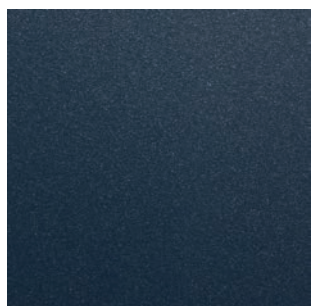
**Bleu 2600 Sablé** YW361F



**Tijuka Sablé** Y2306I



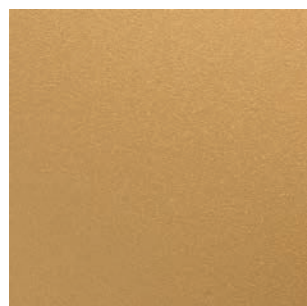
**Antu** Y2209I



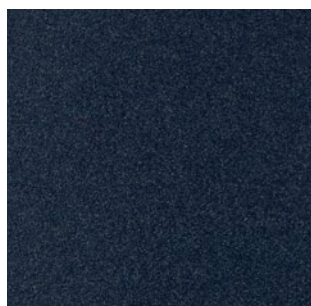
**Bleu 2700 Sablé** YW353F



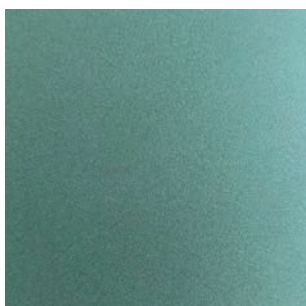
**Changi** Y2373I



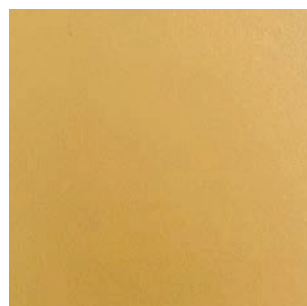
**Ambre Sablé** Y2316F



**Brisbane Sablé** Y2303I



**Amazonia** 14357I



**Medulas** 12375I

# Bold Adventure

From our first palette you can set off to explore the second - a palette with bold, uplifting colors, that glisten and sparkle. It's a palette that includes shades of earthy reds and regal blues that hint at excitement, with finishes that dare you to paint a different future that builds on the past.



**Madera**

14358I



**Pinctada**

12250I



**Alby**

Y2101I



**Tasilaq Sablé**

Y2304I



**Ferrum**

14351I



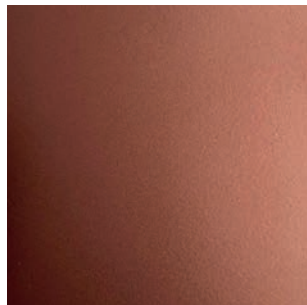
**Tanami Sablé**

Y4304I



**Mars Sablé**

YX355F



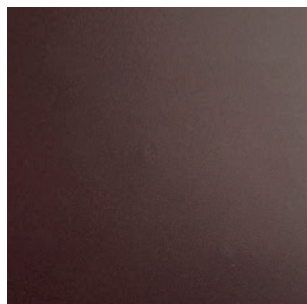
**Tambora**

12213I



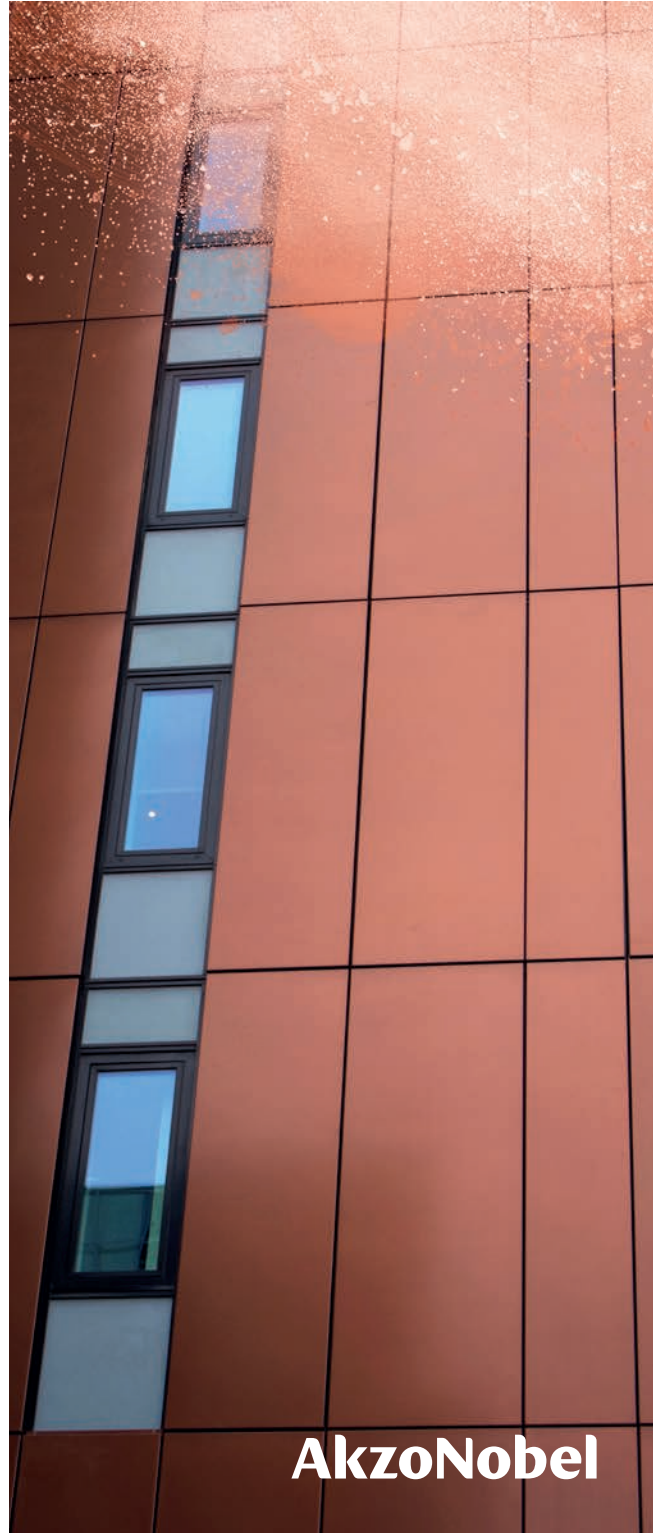
**Innoko Sablé**

Y4306I



**Douro**

12376I



**AkzoNobel**



## Transparency and reliability

### Creating futures that last

You can rely on us. Our Interpon D2525 collection delivers on its promised durability levels in terms of color retention and film integrity.

- Offering up to 25 years global warranty on the coating performance when applied by an Interpon D Approved Applicator.
- Qualicoat Class 2 and GSB Master certifications.
- Meets the performance requirements of AAMA 2604.

### Reduced energy, increased productivity and lower carbon footprint

Interpon D2525 Futura Collection supports the sustainability goals across the construction supply chain by reducing the total energy consumed, lowering carbon emissions, and enhancing production line efficiencies while still delivering the optimum level of performance to leave a lasting legacy and protect the world around us in the following ways:

- Interpon D Low-E technology enables curing at a lower temperature (30°C lower than 'traditional' powder coatings) or curing at a faster line speed. This applies to all the colors that have a code starting with '1'.
- Formulated with bio-attributed raw materials - bringing the benefit of lower carbon footprint.

### Building a sustainable future

The Interpon D2525 Futura Collection is a family of products that is not just helping us to imagine the future; it is also protecting it. Backed by an Environmental Product Declaration (EPD), the raw materials, manufacture and transportation associated with creating Interpon D have been assessed by an independent third-party for transparent sustainability credentials.





## AkzoNobel

Since 1792, we've been supplying the innovative paints and coatings that help to color people's lives and protect what matters most. Our world class portfolio of brands – including International, Sikken and Interpon – is trusted by customers around the globe. We're active in more than 150 countries and use our expertise to sustain and enhance everyday life. Because we believe every surface is an opportunity. It's what you'd expect from a pioneering and long-established paints company that's dedicated to providing sustainable solutions and preserving the best of what we have today – while creating an even better tomorrow. Let's paint the future together.

For more information please visit [www.akzonobel.com](http://www.akzonobel.com).

© 2025 Akzo Nobel N.V. All rights reserved.

All products supplied & technical advice given are subject to the standard terms of sale of the AkzoNobel supplying company. Copyright ©2025 Akzo Nobel Powder Coatings Ltd. Interpon is a registered trademark of AkzoNobel.

MKT2252 | Issue 1 - 02/2026

Speak to your local representative or contact [interpon.info@akzonobel.com](mailto:interpon.info@akzonobel.com) to order samples and learn more about what the Futura Collection can do for you.



**Interpon App**  
Our Interpon App opens the door to all you need to know about Interpon powder coatings



**Interpon Design App**  
Created especially for architects and specifiers



### Environmental Production Declaration

An EPD® is a certified eco-footprint; our commitment to sustainability.



BIM objects in different languages available on: [bimobjects.com/en/interpon-emea](http://bimobjects.com/en/interpon-emea)

### Follow us

Powder Coatings by AkzoNobel



[interpon.com](http://interpon.com)

# Interpon®

**Architectural**

Your imagination starts with our finish