

ViewBoard® 52 Series

*Today's lessons
made easy*

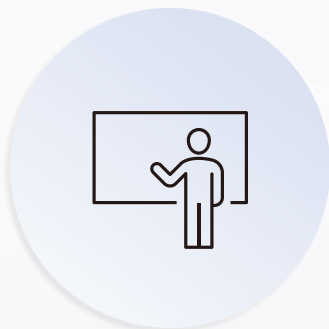
Available sizes: 65"/75"/86"





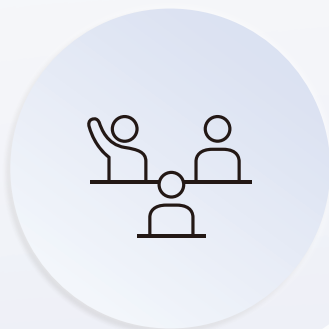
Special Features

Newly designed for better lesson delivery



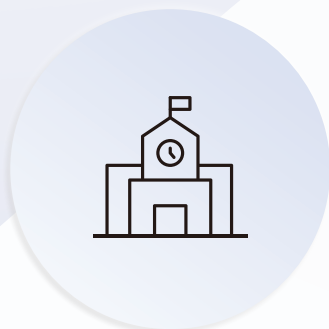
For Teachers

Instant Connectivity
Seamless Usability
User-Friendly Software



For Students

Inclusive Collaboration
Advanced Eye-Care Technology
Integrated Sound

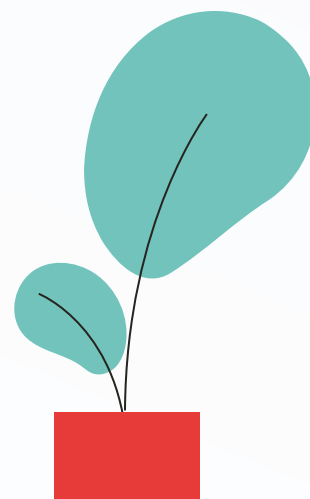


For Schools

Simplified Management
Software Compatibility
Safety and Security

Contents

◆	Special Features	4
	Immersive Multimedia Sound Bar	5
	Responsive 8-Mic Array	5
◆	Designed for Teachers	6
	Instant Connection via USB-C.....	7
	Industry-First User-Centric Design.....	8
	Wireless Connection via vCastSender	9
	Easy Casting via myViewBoard Display	9
	Advanced Screen Bonding Technology	10
	Easy Access Shortcut Keys	10
◆	Built for Students	11
	Best-in-Class Collaboration Tools	12
	Industry-Leading Classroom Sound	13
	Advanced Eye-Care Technology	13
◆	Centralized Management for Schools	14
	Remote Management System	15
	Device Agnostic and Software Compatible	15
	Upgraded System Configuration	16
	Enterprise-Grade Safety and Security	17





Special Features

Upgraded for a better teaching and learning experience.



Immersive Multimedia Sound Bar

Recognizing the power of sound in student engagement, the built-in speakers are positioned front and center to fill the room with rich audio that ensures every detail can be heard.



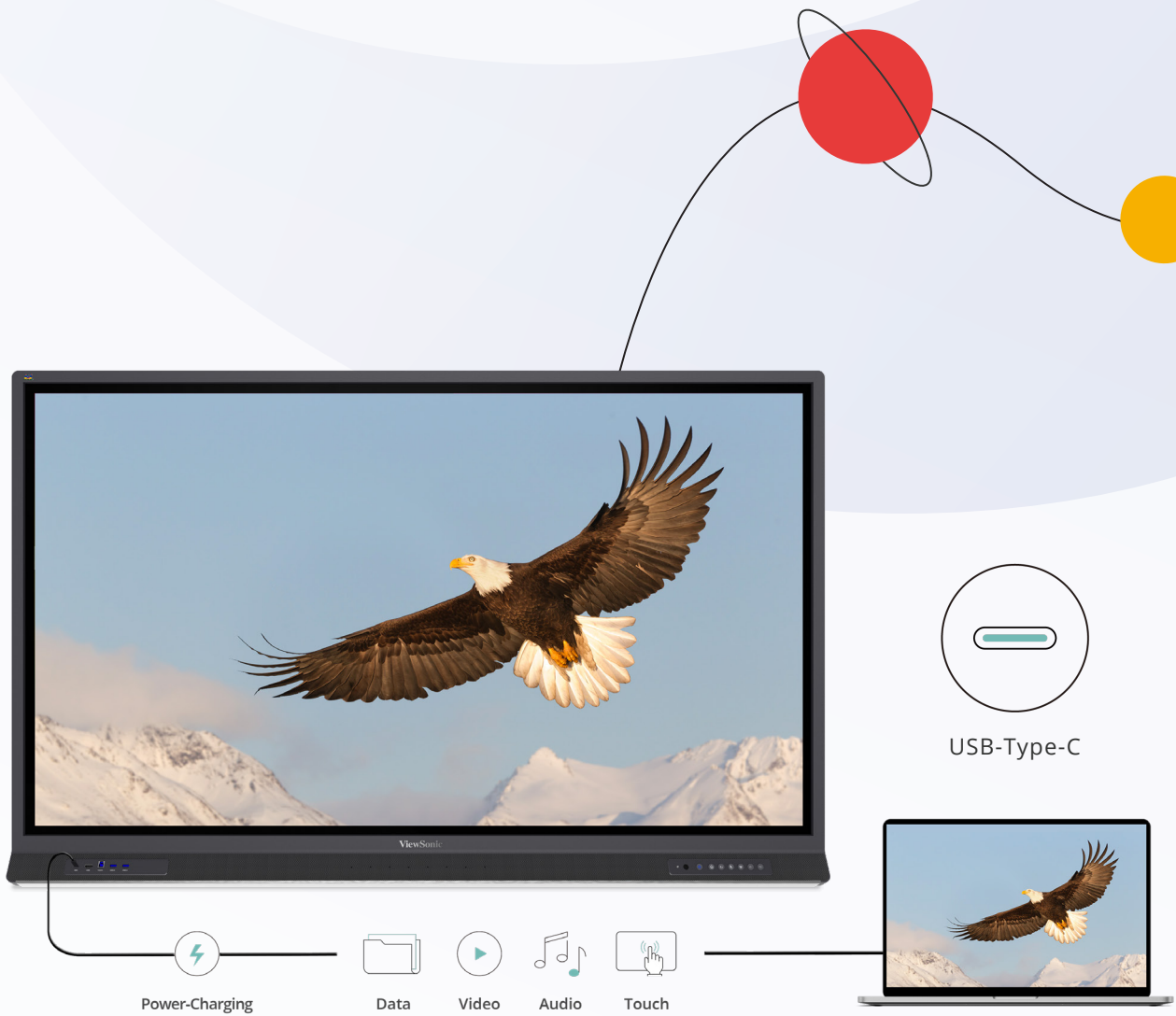
Responsive 8-Mic Array

An integrated beamforming mic array with noise cancelation perfectly captures speech from up to 8 feet away, enabling teachers to be clearly heard by remote learners, or during recorded lessons.

Designed for Teachers

User-centric and digitally styled to support lessons that flow.





Instant Connection via USB-C

A single-cord solution for data, video and power with no preparation or technical know-how required. Teachers simply plug-and-play for immediate presentation, whiteboarding, and collaborative functionality using the familiar software of their own device.

Industry-First User-Centric Design

The unique angular design puts the control buttons and I/O ports clearly in line of sight, giving teachers easier access than competing products and allowing them to seamlessly and creatively incorporate the display into classes without disrupting the lesson flow.



Wireless Connection via vCastSender™

No cable required. ViewSonic's vCastSender application allows teachers to connect wirelessly through a one-time password for cable-free classes with complete functionality of the display's presentation and collaboration tools.



Easy Casting via myViewBoard™ Display

Ideal for quick presentations and guest users, myViewBoard Display allows users to cast directly to the ViewBoard 52 via their internet browser for instant screen-mirroring with no cable or download necessary.



Advanced Screen Bonding Technology

By reducing the space between the glass and the panels to a single millimeter, advanced bonding technology brings even brighter, better, and clearer visuals to an already impressive display.



Easy Access Shortcut Keys

Designed for simplified control, the easily accessible shortcut keys allow teachers to instantly disable the touch function when not required and to freeze the display screen for independent use of their personal device during presentations.

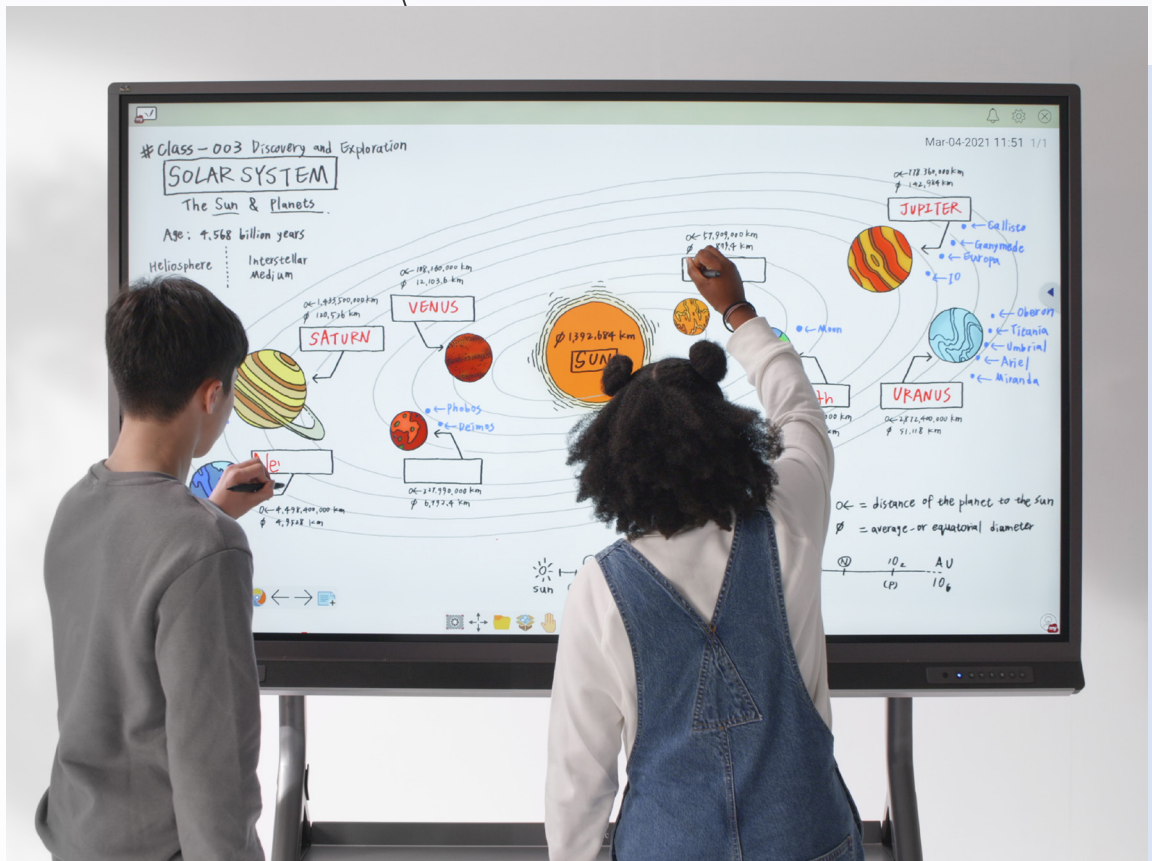
Built for Students

Intuitive digital collaboration
with eye-care technology.



Best-in-Class Collaboration Tools

The 4K Ultra HD display comes equipped with Ultra Fine Touch and palm awareness technology to deliver a completely natural writing experience with dual-pen, 33-point touch capability to support in-class or online student collaboration.





Industry-Leading Classroom Sound

Designed to fill the classroom with robust, attention-grabbing sound, the ViewBoard® 52 Series features 2X15W speakers and a 15W subwoofer embedded within the front-facing soundbar to further amplify the impact of in-class music and videos for increased overall engagement.



Advanced Eye-Care Technology

With True Flicker-Free technology, a blue light filter, and an anti-glare coating all built directly into the display hardware, the ViewBoard 52 Series offers an automatic, exceptional viewing experience that is both eye friendly and energy efficient.

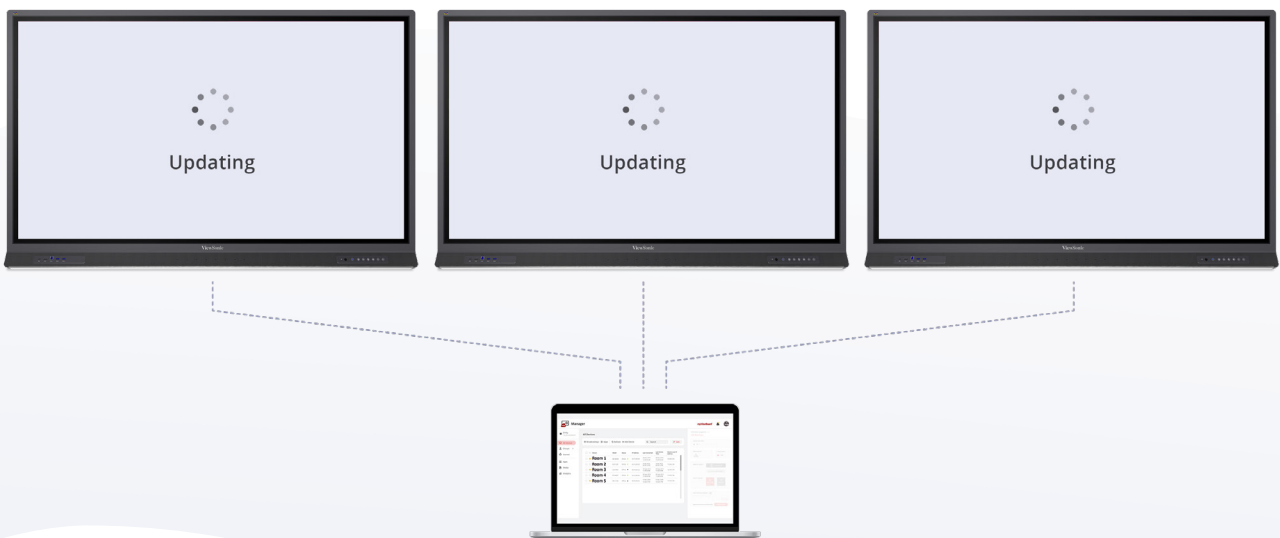


Centralized Management for Schools

User-friendly remote management via
desktop or mobile.

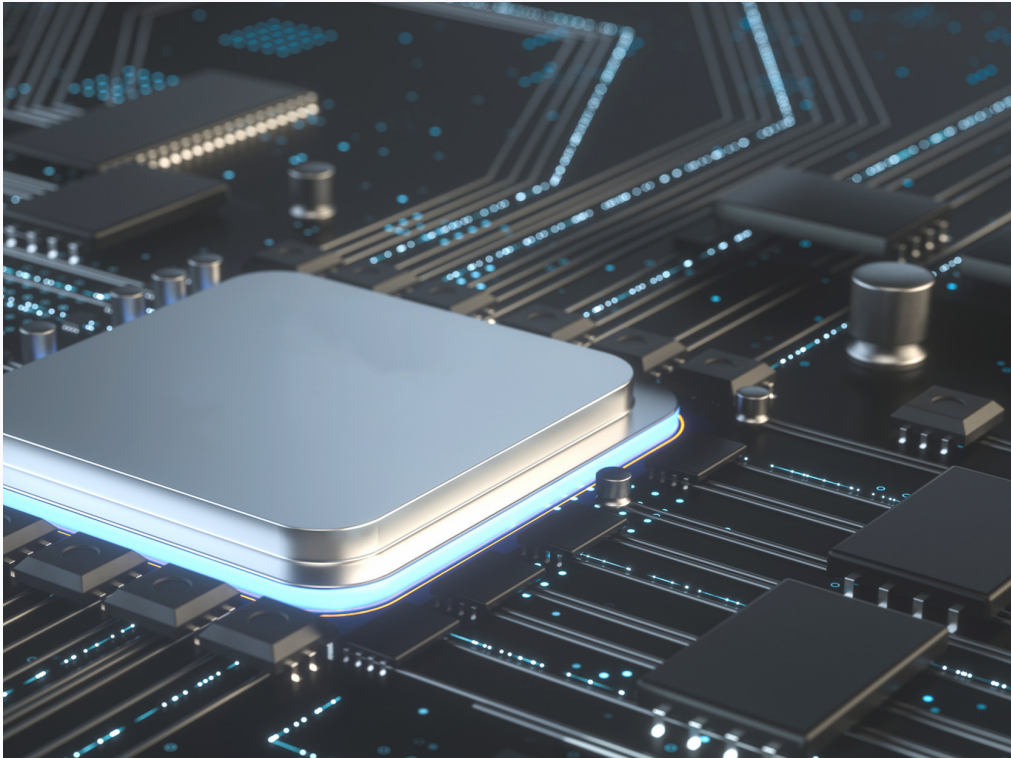
Remote Management System

The browser-based myViewBoard Manager application allows IT managers and verified admin users to update, broadcast and manage multiple displays simultaneously from any location through a secure, user-friendly remote management system.



Device Agnostic and Software Compatible

Designed to use the software you know, the ViewBoard 52 Series operates on Android 9.0 and is compatible with Windows, Mac, Chrome and Linux with full touch input functionality for all connected devices.



Upgraded System Configuration







The ViewBoard 52 Series is pre-installed with a powerful Quad Core A73 CPU, 4GB RAM, 32GB ROM, and runs on the Android 9.0 operating system to be more compatible with the latest apps.



Enterprise-Grade Safety and Security

The built-in AWS-powered myViewBoard™ whiteboarding software provides comprehensive and trustworthy data protection through cloud-powered security and encryption to ensure the security and safety of private files and information.

Specifications

Model		IFP6552	IFP6552-1C	IFP7552	IFP7552-1C	IFP8652	IFP8652-1C
Model							
Display	Panel Size	65"		75"		86"	
	Type/Tech	TFT LCD Module with DLED Backlight.					
	Aspect Ratio	16:9					
	Native Resolution	UHD 3840 x 2160 (Pixels)					
	Brightness	400 nits (typ.)					
	Contrast Ratio	1200:1 Typ. , 5000:1 Max.(DCR enable)					
	Response Time	8ms					
	Viewing Angles	H = 178, V = 178 typ.					
	Backlight Life	50,000 Hours (Typ.)					
	Surface Treatment	Hardness: 9H Anti-glare + Anti-fingerprint coating					
Platform	Processor	ARM Cortex A73*4					
	RAM	LPDDR4: 4GB					
	Storage	32GB					
Touch	Type / Tech	UFT (Ultra-Fine Touch) Technology					
	Touch Point	Windows: 32 points touch / Android: 20 points touch					
	Response Time	≤10ms			≤10ms		
	Scan rate	≥100HZ			≥90HZ		
	Accuracy size	+/- 1mm					
	Pen tips size	2.5mm/8mm					
	Palm resistant	YES					
INPUT	HDMI-IN	x3					
	RGB / VGA	x1					
	DisplayPort	x1					
	Audio	x1 (PC audio in)					
	RS232	x1					
	OPS	x1					
	HDMI-OUT	x1					
Audio	x1 (Earphone out)						
SPDIF	x1 (optical)						
LAN	RJ45	x1					
USB	Type A	USB 2.0 x1 USB 3.0 x4	USB 2.0 x3 USB 3.0 x3	USB 2.0 x1 USB 3.0 x4	USB 2.0 x3 USB 3.0 x3	USB 2.0 x1 USB 3.0 x4	USB 2.0 x3 USB 3.0 x3
	Type B	x2, for touch					
	Type C	Power Delivery 60W PD DP1.2 100M Ethernet USB3.0	65W PD DP1.2 100M Ethernet USB2.0	60W PD DP1.2 100M Ethernet USB3.0	65W PD DP1.2 100M Ethernet USB2.0	60W PD DP1.2 100M Ethernet USB3.0	65W PD DP1.2 100M Ethernet USB2.0
Speakers	15W x 2 + 15W x 1 subwoofer						
Microphone	8 array microphone						
Embedded OS	Android 9						
Bundle Software	Basic Annotation Software	myViewBoard Whiteboard					
	Pro Annotation Software	myViewBoard whiteboard for Windows (embedded in Optional VPC)					
	Wireless Casting	ViewBoard Cast / MyViewBoard Display					
	Remote Device Management	myViewBoard Manager					

Model		IFP6552	IFP6552-1C	IFP7552	IFP7552-1C	IFP8652	IFP8652-1C	
Special Features	SmartPort™ USB	USB 3.0 port (auto switch between ViewBoard/PC/External laptop)						
	BYOM	Share AV USB-peripherals to external laptop via USB-C or Touch USB cable						
	Windows ink	Yes						
	LAN sharing between ViewBoard & PC	10/100/1000M for ViewBoard/PC source, 100M for USB-C						
	Light sensor	Yes						
	Flicker Free	Yes (in every brightness level)						
	Power	Voltage	100-240VAC +/- 10% Wide Range					
Consumption		190W (Typ.) < 0.5 W ("Off")		227W (Typ.) < 0.5 W ("Off")		332W (Typ.) < 0.5 W ("Off")		
Wall Mount (VESA®)		600 x 400		800 x 400		800 x 600		
Operating Conditions	Temperature (°C)	0°C to 40°C						
	Humidity	20% ~ 80% RH Non-Condensing						
Dimensions (W x H x D)	Physical	1509 (W) x 955 (H) x 119 (D) mm	188 (W) x 948 (H) x 120 (D) mm	1720 (W) x 1070 (H) x 118 (D) mm	1709 (W) x 1071 (H) x 120 (D) mm	1966 (W) x 1204 (H) x 118 (D) mm	1966.4 (W) x 1204.4 (H) x 118.4 (D) mm	
		59.4 (W) x 37.6 (H) x 4.7 (D) in	58.6 (W) x 37.3 (H) x 4.7 (D) in	67.7 (W) x 42.1 (H) x 4.7 (D) in	67.3 (W) x 42.2 (H) x 4.7 (D) in	77.4 (W) x 47.4 (H) x 4.7 (D) in	77.4 (W) x 47.4 (H) x 4.7 (D) in	
		Packaging	1660 (W) x 1045 (H) x 245 (D) mm	1620 (W) x 1043 (H) x 220 (D) mm	1880 (W) x 1160 (H) x 280 (D) mm	1848 (W) x 1190 (H) x 270 (D) mm	2140 (W) x 1340 (H) x 280 (D) mm	2102 (W) x 1330 (H) x 270 (D) mm
	65.4 (W) x 41.1 (H) x 9.7 (D) in		63.7 (W) x 41.0 (H) x 8.7 (D) in	74.0 (W) x 45.7 (H) x 11.0 (D) in	67.3 (W) x 46.8 (H) x 10.6 (D) in	84.3 (W) x 52.8 (H) x 11.00 (D) in	72.8 (W) x 46.8 (H) x 10.6 (D) in	
	Weight		Net	96.8 lb 43.9 kg	93.4 lb 42.4 kg	125.2 lb 56.8 kg	121.8 lb 55.3 kg	156. lb 71.0 kg
		Gross	122.1 lb 55.4 kg	114.9 lb 43.9 kg	159.0 lb 72.1 kg	170.8 lb 77.5 kg	196.4 lb 89.1 kg	179.5 lb 81.4 kg
Regulations		cTUVus, FCC, EPEAT, Mexico coc, Mexico Energy, RoHS, Energy Star 8, CEC,EMC/CE, CB, RoHS & DOC, REACH, WEEE, ErP. EEI,RCM, BIS, PSE, VCCI,C-CC, CECP		cTUVus, FCC, EPEAT, Mexico coc, Mexico Energy, RoHS, Energy Star 8, CEC,EMC/CE, CB, RoHS & DOC, REACH, WEEE, ErP. EEI,RCM, BIS, PSE, VCCI, BSMI,CCC, CECP		cTUVus, FCC, EPEAT, Mexico coc, Mexico Energy, RoHS, Energy Star 8, CEC,EMC/CE, CB, RoHS & DOC, REACH, WEEE, ErP. EEI,RCM, BIS, PSE, VCCI, BSMI, CCC, CECP		
Low Blue light (LBL certificate)		Yes						
Energy Star version		ES8.0						
EEL rating		A+						
Package Contents		<ol style="list-style-type: none"> Power cable (3 meters) Remote control USB Type-C cable (1.5 meters) USB Touch cable (3 meters, USB2.0) Touch pen x 2 Quick Start Guide + Compliance statement RS232 adapter Clamp x 5 Camera Plate Screw x 8 (camera 2+2, wall mount 4) HDMI cable (3 meters) Eraser AAA Battery x 2 		<ol style="list-style-type: none"> Power cable (3 meters) Remote control USB Type-C cable (1.5 meters) USB Touch cable (3 meters, USB2.0) Touch pen x 2 Quick Start Guide + Compliance statement RS232 adapter Clamp x 5 Camera Plate Screw x 8 (camera 2+2, wall mount 4) HDMI cable (3 meters) Eraser AAA Battery x 2 		<ol style="list-style-type: none"> Power cable (3 meters) Remote control USB Type-C cable (1.5 meters) USB Touch cable (3 meters, USB2.0) Touch pen x 2 Quick Start Guide + Compliance statement RS232 adapter Clamp x 5 Camera Plate Screw x 8 (camera 2+2, wall mount 4) HDMI cable (3 meters) Eraser AAA Battery x 2 		

Purchasing Information:

Part Number: IFP6552-1TAA, IFP7552-1TAA, IFP8652-1TAA - TAA complaint models

Part Number: IFP6552-1CN, IFP7552-1CN, IFP8652-1CN - without HDMI out

Reseller Information



Global Headquarters: Brea, California, USA Regional

Headquarters: London, Taipei, Shanghai, & 46 offices worldwide

Products sold in over 100 countries

www.viewsonic.com/education / www.myviewboard.com