



The Contractor's Guide to
**Drywall Access
Panels**

Table of Contents

2	Introduction
3	What is a Drywall Access Panel?
4	Types of Drywall Access Panels
5	What is a Flange?
6	Types of Flanges
9	Steps to Installing a Drywall Access Panel
12	Invisa Hatch™ Our Most Popular Drywall Access Panel
13	Why Choose Invisa Hatch™?
15	Features of Invisa Hatch™
16	Choose the Invisa Hatch™ Model That's Right for You
18	Benefits of Proper Installation
19	Contact Us

Introduction

North America's commercial construction industry requires the toughest products built to last.

When it comes to access doors, general contractors build relationships with companies that can meet their demands for quality, durability, ease of installation, customization, and value. Established in 2005, **Best Access Doors** has over 17 years of experience serving over 30,000 commercial construction professionals with high-quality, industry standard drywall access panels for use throughout commercial buildings.



Airports



Hotels



Skyscrapers



Hospitals and Medical Labs



Universities and Schools



Prisons and Correctional Facilities



Restaurants and Retail Spaces



Stadiums

Our partners include:



General Contractors



Architects



Project Managers



HVAC Installers



Plumbers



Electricians



Drywallers

We carry almost 500 different models and sizes of drywall access doors at the present time! But with so many options, is there an easy way to decide which access panel is right for your next project?

To make things simple, let's start at the beginning – **what is a drywall access panel, anyway?**

What is a Drywall Access Panel?

Drywall access panels are small doors that provide entry to a space or compartment behind the walls, floors, and ceilings in your commercial building. They provide easy access to plumbing components, electrical outlets, circuit boxes, HVAC systems, valves, meters, and faucets. When correctly installed, they remain inconspicuous and blend seamlessly with the surface, creating a convenient opening while maintaining the original appearance of the wall.

What Are the Benefits of Installing Drywall Access Doors?

In addition to providing entry, these panels offer many additional benefits including:

- Providing easy access for repairs and maintenance in new or existing walls and ceilings
- Preventing the inconvenience of wall demolition and patching
- Protecting your commercial building components from unauthorized tampering
- Supporting your green building designs depending on the type of door you choose
- After installation, you can apply the same paint of the installation surface to the panel door to preserve aesthetics and give your space a cohesive look.

Now it's time to learn about the different styles of drywall access doors that you can choose from, depending on the needs of your commercial project.

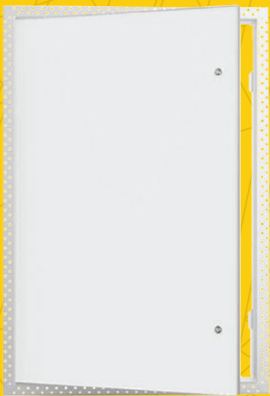


Types of Drywall Access Panels

One of the main reasons there are so many varieties of drywall access doors is to address the distinct access requirements of the construction industry. Identifying your building's access requirements and the application will determine the type of panel you need.

Save Money with Plastic:

If you want to save on costs, consider purchasing lightweight plastic access panels for drywall applications. These doors provide an economical solution featuring high-impact styrene plastic with U.V. stabilizers to prevent corrosion and fading.

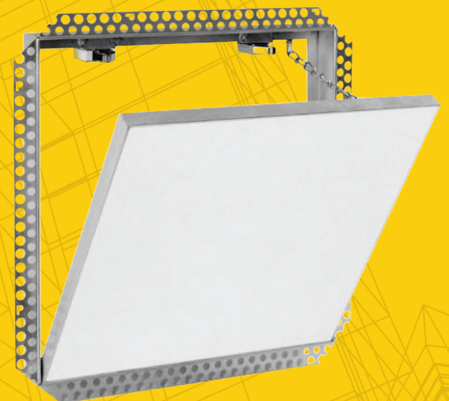


For Improved Sustainability, Go with Gypsum:

One of the primary benefits of a gypsum drywall access panel is sustainability. Manufactured directly from GFRG/GFRC & 70% post-consumer recycled glass, the gypsum drywall panel aims to achieve a unique GREEN design matrix with a near-invisible finish.

For Added Convenience, Get Detachable:

For improved access to equipment located behind the wall, a drywall panel with detachable hatch is a great choice. These doors come equipped with a safety system to prevent accidental opening. As a bonus, the air/dust resistant gasket, provides added protection for delicate building components.



What is a Flange?

Access doors and panels come in many varieties, depending on their purpose. All the options and types can be confusing. One common term you may come across is 'access door with flange.' If you are a commercial building contractor, you probably know what a flange is, but it can still be helpful to review the definitions specifically related to access doors.

A flange is a protruded ridge, lip, or external or internal rim that increases strength. A flange allows for easy attachment and transfer of contact force with another object. It helps with stabilizing and guiding the movements of a machine or, in this case - your access door!



Types of Flanges

Hidden Flange

BA-CTR is an example of a drywall access panel with a hidden flange. Watch the video to learn how the hidden flange allows the door to blend with the surface:

WATCH VIDEO



As you can see in the video, edges of the door overlap the flange, hiding or covering it as the door shuts. Since the frame's unique design conceals the flange, there will be no need to apply plaster or other compounds, making it more convenient for you or your personnel to install it.

Behind Drywall Flange:

Designed to provide access to walls and ceilings while maintaining an invisible, architecturally pleasing appearance, BA-F2A is a recessed access door with a behind-drywall flange. The door frame is recessed to accept drywall, providing a similar edge to drywall bead to allow for finishing of the wall or ceiling surface – a great choice if you need the door to blend with its surroundings.



Types of Flanges

Drywall Bead Flange

(also referred to as 'Mud-in Flange')

A drywall bead flange features a perforated taping bead with pre-punched holes designed for installation in walls and ceilings after installing the drywall. You apply drywall compound over the beading when you finish the drywall joints. The beaded flange blends with the drywall surface leaving only the door panel visible for an aesthetically pleasing finish. An excellent example of this type of drywall access door is the BA-DW-5040.



Plaster Bead Flange

A plaster bead flange consists of wire mesh extending from the edges of the flange. The intended design is for plaster compound application to adhere better, making the entire structure of the door and panel more stable. You will not be able to see the plaster bead flange once you apply the plaster. The flange's design makes the installation of this door easy in walls and ceilings.



Types of Flanges

One-Piece Flange

Flush access doors often have a one-piece outer flange welded to the mounting frame. For example, BA-UF-5000 is an innovative universal flush access door with a one-piece flange used on plaster, masonry, tile, or any flush surface. The door panel features rounded safety corners, which provide an architecturally pleasing appearance, and the one-piece trim flange will not rack, sag, or distort, adding strength.



Exposed Flange

The priority for industrial spaces is often more about fire ratings and insulation than aesthetics, so exposed flange access doors are standard. The BA-PFI Insulated Access Door with 1" Flange is an excellent example of an access door with an exposed flange. Exposed flange access doors offer practicality and value, designed for quick and easy installation for multiple applications. General-purpose doors bought in bulk and used throughout large structures also have exposed flanges, like BA-AHD, one of our sturdiest and most popular multipurpose access doors.



Steps to Installing a Drywall Access Panel

Installation Instructions for BA-IVH

When putting up drywall, it is crucial to mark the exact spot of the component to determine where you need to place the access door. Identifying its precise location prevents back jobs and delays to the project. Before purchasing the panel, choose the size you need, depending on the location and desired purpose.

Let's go over the steps to successful installation next!

Tools You Will Need:



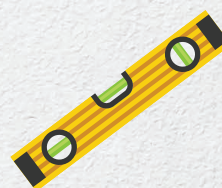
Screwdriver



Set square



Measuring
Tape



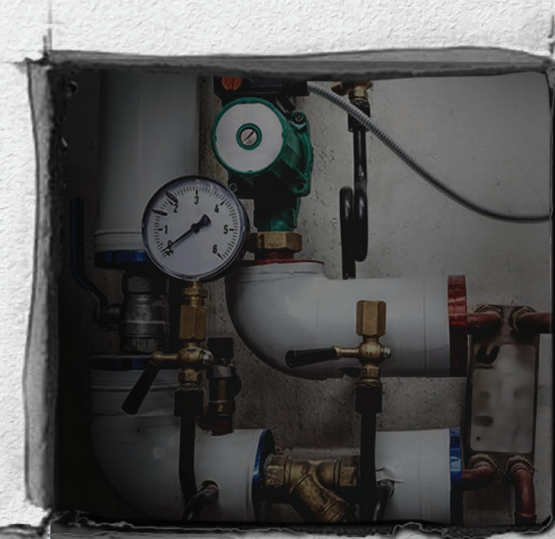
Level



Drywall
Saw



BA-IVH



Steps to Installing a Drywall Access Panel

Before you start, remember:

Door Size refers to the clear opening of the panel when the door leaf is removed.

Cut Opening is the door size plus an additional amount (indicated on the specification sheet). This is the size of the opening you will cut into the drywall.

Rough Frame Opening is the measurements from inside stud to inside stud of the surrounding framework.

STEP 1:

Determine the location of the access panel and note the position of studs, joists, and components below the surface.

STEP 2:

Measure the inside dimensions of the frame (not the door) and add the additional amount indicated on the specification sheet.

STEP 3:

Mark a pair of base lines 90 degrees to each other on the ceiling or wall where the hole will be. There must be a minimum of 1 1/4" (32 mm) and a maximum of 4" (102 mm) away from a stud or joist.

STEP 4:

Mark the opposite sides as well. Accurate marking is very important and make sure that the lines are square.

STEP 5:

Cut the opening with a knife, saw, or drywall cutter. Make sure the edges are clean.

Steps to Installing a Drywall Access Panel

STEP 6:

Check to make sure the frame is square before installing all the screws to insure proper operation of the door.

STEP 7:

Depending if the drywall panel is right or left opening, install so the panel tips out to open. If the panel is going into the ceiling, install the latches away from the wall for easier operation. For sizes larger than 24" by 24" install the drywall insert (if applicable) with screws.

STEP 8:

Pass the access panel through the opening and pull firmly back after opening hatch.

STEP 9:

Screw through the drywall into the frame of the panel keeping the maximum distance between screws at 4".

STEP 10:

Test that the door opens correctly. Apply drywall compound.

STEP 11:

Clean the frame and the door with a damp cloth.

STEP 12:

Install safety cable (where applicable)

Invisa Hatch™

Our Most Popular Drywall Access Panel

Installing our drywall access panels is remarkably easy, especially for a professional contractor. But when it comes to functionality and unmatched product features, INVISA HATCH stands out among the rest. Here's why:



With its innovative design and superior versatility, the **Invisa Hatch™** (BA-IVH) stands out with its unique, fully detachable hatch. It is a drywall access door that guarantees excellence and durability with its high-grade aluminum frames, foam perimeter seal, and air and dust resistant gasket.

Invisa Hatch™ is ideal for high-profile locations, including hotels, high-end condominiums, formal dining rooms, lounges, and upscale establishments. Once installed, the door blends seamlessly for a virtually invisible finish!



Why Choose Invisa Hatch™?

Invisa Hatch™ is our latest solution for upscale interiors where architects, designers, and building owners desire the concealment of required access doors. Hardware sits behind the drywall inlay; once installed, the door blends seamlessly into the drywall. This door is completely removable and provides unobstructed access to non-rated walls.

Unique Benefits of Installing Invisa Hatch™



Easy to Install

There are several reasons why Invisa Hatch™ is the leading drywall access panel in the North American market, but one of the best things about it is that it is easy to install. BA-IVH is accurately measured for quick-and-easy flush installation on all non-rated surfaces. Once installed, it's easy to operate! The detachable hatch pops off when you apply pressure to the touch latches.



Accessibility

BA-IVH provides easy access to areas behind walls or ceilings for hassle-free maintenance, while concealing building components from view.



Virtually Invisible

Once this access panel is installed and finished, the door is practically invisible as the frame, latch, and hidden hinges leave a 1/16" reveal between the frame and the access door.

Why Choose Invisa Hatch™?



Versatility

With a strong, welded frame and touch latches, this panel stands out due to its versatility and design with a fully detachable hatch.



Safety

Invisa Hatch™ is equipped with a safety system and non-snag removable safety cable to prevent accidental opening. Remember to reattach the safety system if you remove the hatch.



Durable and Solid

Constructed from high-grade aluminum and bonded with a unique welding process joining the outer and inner frames, the door has a foam perimeter seal and air and dust-resistant gasket.



Innovative Design

Invisa Hatch™ is recessed to receive drywall in your choice of two thicknesses designed to match the drywall surface on which the door mounts. Once installed, paint the surface to match!



Concealment

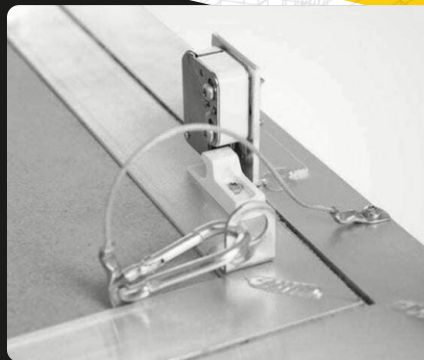
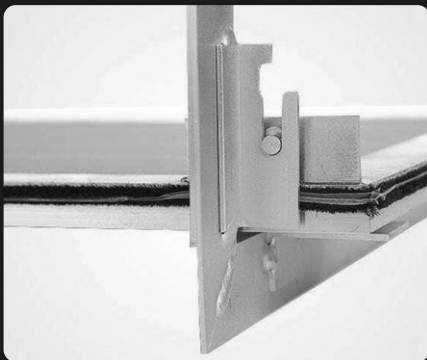
Once installed and finished, Invisa Hatch™ is practically invisible as the concealed frame. There is no need to worry about the panel standing out after installation. Its latch, frame, and hinges are all inside the unit, showing only a reveal of 1/16 (1.59mm) between the frame and the door.

Features of **Invisa Hatch™**

Invisa Hatch™ drywall inlay with fully detachable hatch is both practical and aesthetically pleasing. Its high-grade aluminum is bonded with a special welding process. The access panel consists of a welded frame and drywall inlay.

The reveal of 1/16 of an inch (1.59 mm) is visible between the outer frame and door hatch. The concealed snap locks open the access panel when pressure is applied to the spring-loaded latch side.

- **High-Grade Bonded Aluminum**
- **5/8" (15.9 mm) Drywall Inlay**
- **Detachable Hatch**
- **Concealed Hardware and Snap Locks**

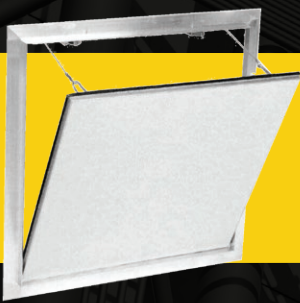


Choose the Invisa Hatch™ Model **That's Right for You**

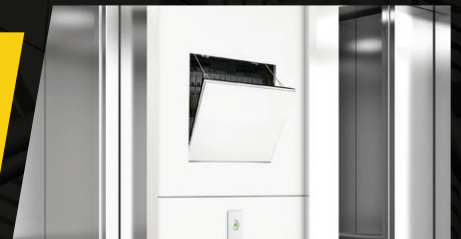
Invisa Hatch™ is a revolutionary product designed for durability, aesthetics, and performance! Constructed from corrosion-resistant aluminum and bonded for strength and stability, **Invisa Hatch™** is virtually invisible once installed. It's quick to open with spring-loaded snap locks and equipped with a safety system held in place with a removable cable to prevent accidental opening.

Superior engineering and an innovative design make this access door especially popular with our commercial construction customers looking for a high-end product suitable for upscale interiors. Along with customization options, you can also choose from Dust-Resistant, Mud-In Flange, and Made for Tile variations, depending on your unique requirements.

Let's take a closer look!



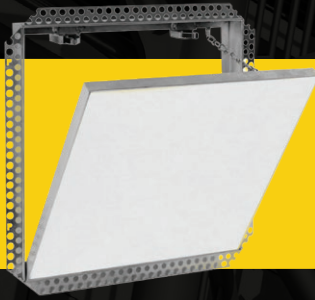
Dust-Resistant BA-IVHKL



Excessive dust can wreak havoc on delicate building components, specifically electronic systems behind your walls. In high-traffic locations like construction offices and workshops, protect electronics, cables, and expansion slots from irreversible damage by concealing them behind these dust-resistant access doors to ensure optimal performance.

The perimeter has a specially developed brush seal to help make the door air and dust resistant. Great for areas prone to dust and where building components need additional protection! See the specification sheet for BA-IVHKL for all the details.

Choose the Invisa Hatch™ Model **That's Right for You**



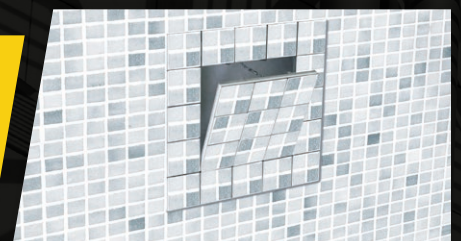
Mud-In Flange BA-IVHDF



The flange on an access door is a protruded ridge that increases strength, allowing for easy attachment and transfer of contact force with another object. A flange helps to stabilize and guide the movements of your door. Invisa Hatch™ is an excellent choice for your hotel lobby, guest rooms, and public areas. The surface can be painted or finished to match the surroundings minimizing disruption. Along with concealed hardware, you can enjoy a flush finish by opting for our mud-in flange variant designed to keep the door level with the wall's surface for a seamless appearance. The specification sheet for BA-IVHDF outlines the features of this door. The mud-in flange has a perforated tapping bead with pre-punched holes designed for installation in drywall by applying compound when you finish the drywall joints. The flange blends into the drywall surface, leaving the panel ready for finishing to match the surface.



For Tile BA-IVT



Invisa Hatch™ tiled variant is ideal for walls in commercial kitchens, washrooms, swimming pool areas, and maintenance rooms. Conceal your plumbing components, taps, pipes, and water meters from plain view, with corrosion-resistant aluminum access doors, finished with the same tiled surface as the walls! Not only do these doors protect your equipment from tampering, but they also maintain a seamless appearance consistent with your decor. Perfect for hospitals and locker rooms where concealed access through tile is required. See the specification sheet for BA-IVT to learn more about this product.

Benefits of Proper Installation

When you install BA-IVH correctly, you can expect excellence. However, improper installation can affect its intended purpose and compromise quality. If you have questions, be sure to consult a professional.



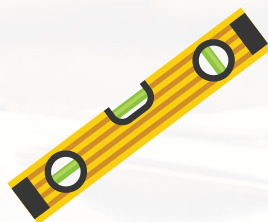
BA-IVH

- **Maintains the integrity of your access door's features**
- **Ensures safety and security near access openings**
- **Prevents additional repair and early replacement costs**
- **Ensures product performance**
- **Prevents return installation trips**

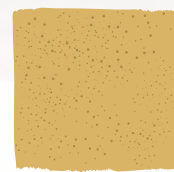
Tools You Will Need:



Pencil



Level



Sandpaper



**Drywall Saw
or Utility Knife**



Set square



**Electric
Screwdriver**



Contact Us: 1-888-233-6612

Contact our product experts if you have questions about Invisa Hatch™ or other access doors in our extensive line-up. We would love to work with you on your next commercial construction project! Keep in mind that we can also customize just about anything.

If you're looking for something specific, request a quote, and we'll get back to you within 30 minutes!

Request a Quote



We Want to Hear from You

With over 17 years of hands-on experience, trust **Best Access Doors** to create the best customized solution for your next commercial project! We have answers to your questions thanks to our expansive knowledge base. We can help find the product that works best for your specific purpose - for walls, ceilings, roofs, and your commercial building's exterior. We can also recommend the right products for your specific profession. Whether you're a contractor, plumber, roofer, electrician, HVAC professional, engineer, or architect - we can help!

Trust **Best Access Doors** to provide the highest quality products and expertise you need to improve accessibility, increase security, enhance fire safety, and expand the use of limited space in your commercial buildings. Enjoy the versatility and customization of our access doors, roof hatches, floor panels, and other innovative products designed for North America's commercial construction industry.

Trust **Best Access Doors** to Find the Best Solution for Your Next Project!

We Help You Build Better!



1-888-233-6612

www.BestAccessDoors.com

