

**BEST  
ACCESS  
DOORS**  
FOR ARCHITECTS



AN ESSENTIAL GUIDE FOR ARCHITECTS

# Streamlining for Success

COMMUNICATING EFFECTIVELY WITH GENERAL CONTRACTORS

# Table of Contents:

<b>Introduction</b>	03
<b>Building with Contractors in Mind</b>	05
<b>Chapter 1: Understanding General Contractor Priorities</b>	
• Ease of Installation	06
• Labor Costs	08
• Bottom Line	10
<b>Chapter 2: Features of Best Access Doors that Appeal to Contractors</b>	
• Design Simplicity	12
• Durability and Maintenance	14
• Versatility	16
<b>Chapter 3: Communicating Value to Contractors</b>	
• Technical Specifications	19
• Cost-Benefit Analysis	20
• Troubleshooting Guide	21
<b>Chapter 4: Supporting Tools and Resources</b>	
• Installation Guides	23
• Specification Sheets	24
• Contact Information	25

# Introduction

Welcome to "Streamlining Success: An Essential Guide for Architects," designed to help you communicate effectively with general contractors about the benefits of using Best Access Doors.

This eBook is crafted to equip you with the knowledge and tools needed to demonstrate how our products can significantly enhance project efficiency and profitability.







CHAPTER 1:

# Understanding General Contractor Priorities



# Building with Contractors in Mind

Architects envision structures, and contractors bring them to life. Seeing the construction process through a contractor's eyes is crucial to achieving optimal design outcomes. To master this, consider the entire lifecycle of a building, from conception to completion. Understanding key construction elements can transform your collaboration with contractors, open new project opportunities, and elevate the overall quality of your designs.

## So, what do contractors value most?

- **Ease of Installation**
- **Durability**
- **Versatility**
- **Clear Communication and Support**

Contractors appreciate access doors that are easy to install, durable, versatile, and supported by clear information. Best Access Doors can help you provide solutions that meet their needs, directly impacting project timelines, costs, and overall satisfaction. Let's explore how these core elements contribute to successful design projects.





# Ease of Installation



## Designed for Quick Installation

Best Access Doors' products are engineered for quick and easy installation, reducing the complexity that can often lead to delays. This ensures contractors can complete installations efficiently, maintaining project timelines and minimizing disruptions. Streamlined installation processes are key to keeping projects on schedule and within budget. According to [Project Manager](#), having a streamlined architectural design process helps reduce risks that could result in costly, timely delays.

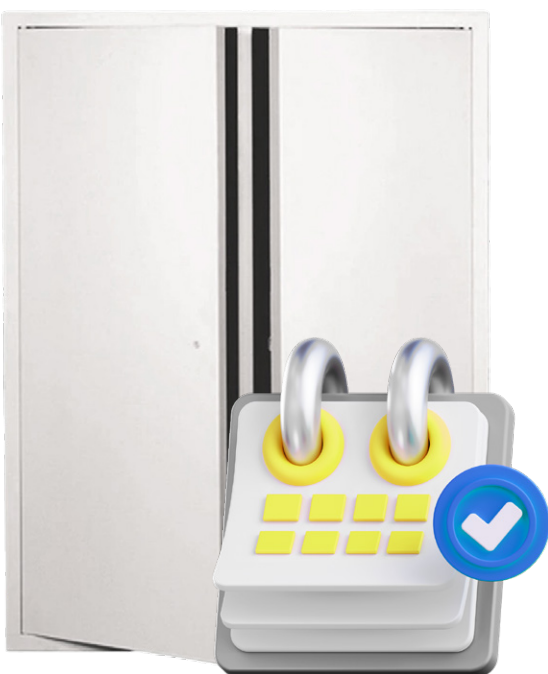
This emphasizes the importance of efficient project management in maintaining schedules and minimizing disruptions.



# Ease of Installation

## Requires Minimal Tools and Labor

Our access doors are designed to be installed with minimal tools, saving time and reducing labor. The [EPDM Roofing Association](#) highlights that products requiring minimal tools for installation can significantly reduce labor costs and installation times. This is crucial for maintaining efficiency on construction sites. This simplicity reduces the need for specialized equipment, further accelerating the installation process and minimizing labor costs. By reducing the number of tools required, contractors can streamline their tool management and reduce the likelihood of tool-related delays or complications.



## Helps Keep Projects on Schedule

Simplifying the installation process helps maintain project timelines, which is crucial for meeting deadlines and avoiding penalties associated with delays. [Smartsheet](#) explains that efficient installation processes are critical for maintaining project schedules and avoiding costly delays. This is essential for ensuring projects are completed on time and within budget.

Ensuring that each phase of the project proceeds smoothly without unnecessary delays is vital for overall project success.

By utilizing products that are easy to install, contractors can better adhere to their schedules and deliver projects on time.





# Labor Costs



## Simplifies Installation Process

The streamlined design of Best Access Doors' models significantly reduces the complexity and time required for installation, leading to lower labor costs.

"Streamlined designs can reduce installation times, leading to lower labor costs and increased efficiency" ([Best Access Doors Blog](#)).

By simplifying the installation process, contractors can reduce the number of labor hours required, which directly impacts the bottom line. This efficiency not only saves money but also allows for the reallocation of labor resources to other critical tasks within the project.



# Labor Costs

## Reduces Labour Hours

Choosing the right access panel can lead to fewer hours spent on installation, allowing labor resources to be reallocated more efficiently. "Reducing installation time allows labor to be reallocated to other critical tasks, optimizing overall productivity" ([Best Access Doors Blog](#)).

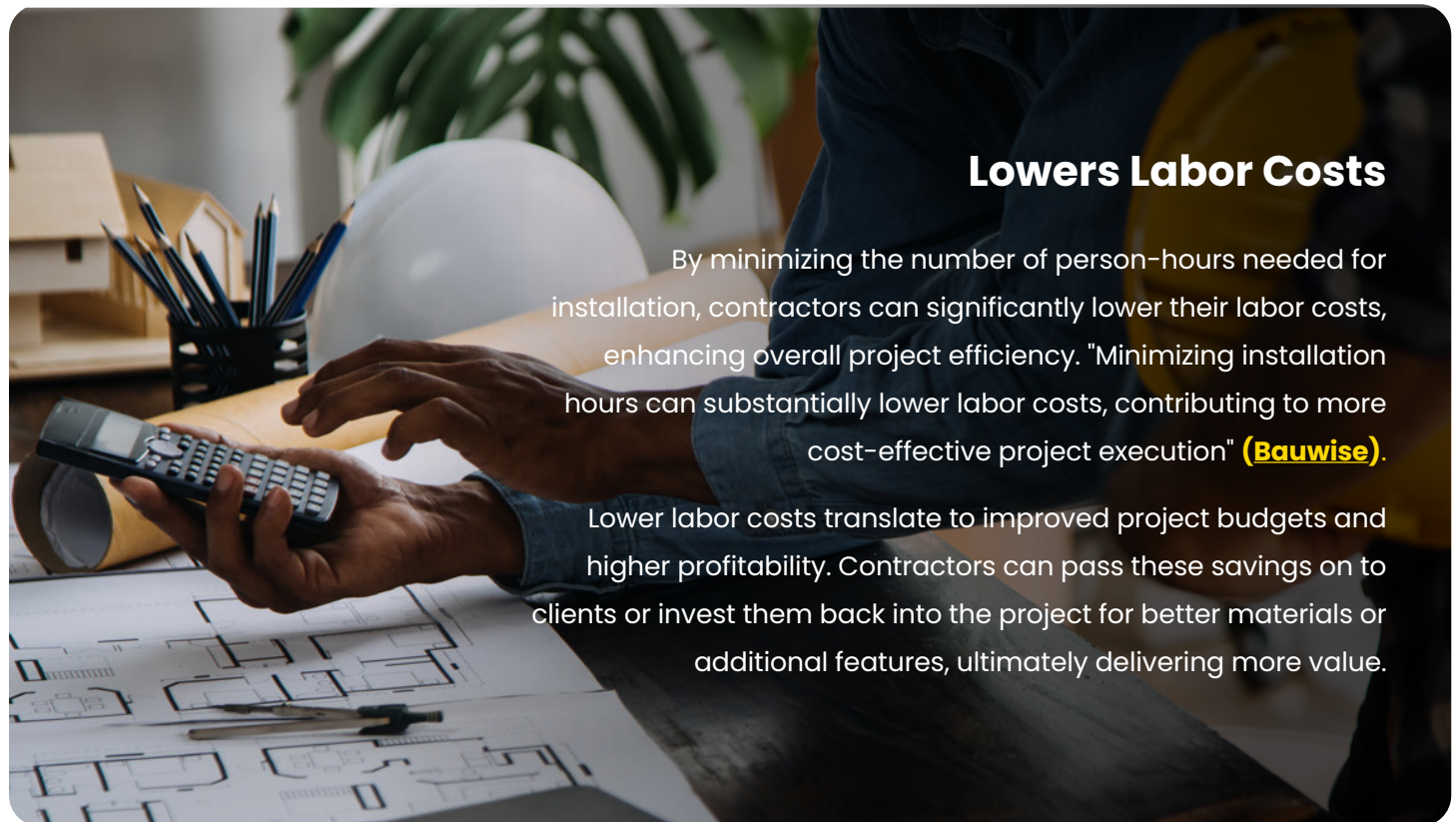
By minimizing the time spent on each installation, contractors can maximize their workforce productivity, ensuring that labor resources are used in the most effective manner possible. This optimization leads to overall better project management and execution.



## Lowers Labor Costs

By minimizing the number of person-hours needed for installation, contractors can significantly lower their labor costs, enhancing overall project efficiency. "Minimizing installation hours can substantially lower labor costs, contributing to more cost-effective project execution" ([Bauwise](#)).

Lower labor costs translate to improved project budgets and higher profitability. Contractors can pass these savings on to clients or invest them back into the project for better materials or additional features, ultimately delivering more value.





# Bottom Line



## Reduces Installation

Time Faster installation times mean projects can move forward more quickly, freeing up resources and reducing overhead costs. "Quick installations free up resources and reduce overhead, leading to more efficient project management" ([Best Access Doors Blog](#)). This efficiency not only accelerates project timelines but also reduces the amount of time that resources are tied up, allowing for better allocation across multiple projects.



## Lowers Labor Costs

Reducing the number of person-hours required for installation directly impacts **labor costs**, which are a significant expense in construction projects. Reducing labor hours directly translates to lower labor costs, a major factor in overall project expenses. This cost reduction can be a significant competitive advantage, enabling contractors to offer more competitive bids and win more projects.



## Improves Project Profitability

Combining reduced labor costs with faster installation times results in overall improved project profitability. Contractors can bid more competitively on projects knowing they can deliver high-quality results cost-effectively. Efficiency in installation improves profitability, allowing contractors to bid more competitively. Improved profitability not only benefits contractors but also creates opportunities for reinvestment into the business, fostering growth and stability.





CHAPTER 2:

# Features of Best Access Doors that Appeal to Contractors



# Design Simplicity

## Straightforward Design

The clean, uncomplicated design of Best Access Doors ensures that they can be installed quickly and without confusion. This simplicity reduces the potential for installation errors, ensuring that the process is smooth and efficient. "Straightforward designs facilitate quick, error-free installations" ([Best Access Doors Blog](#)). A straightforward design minimizes the likelihood of mistakes during installation, which can save time and reduce costs associated with rework.

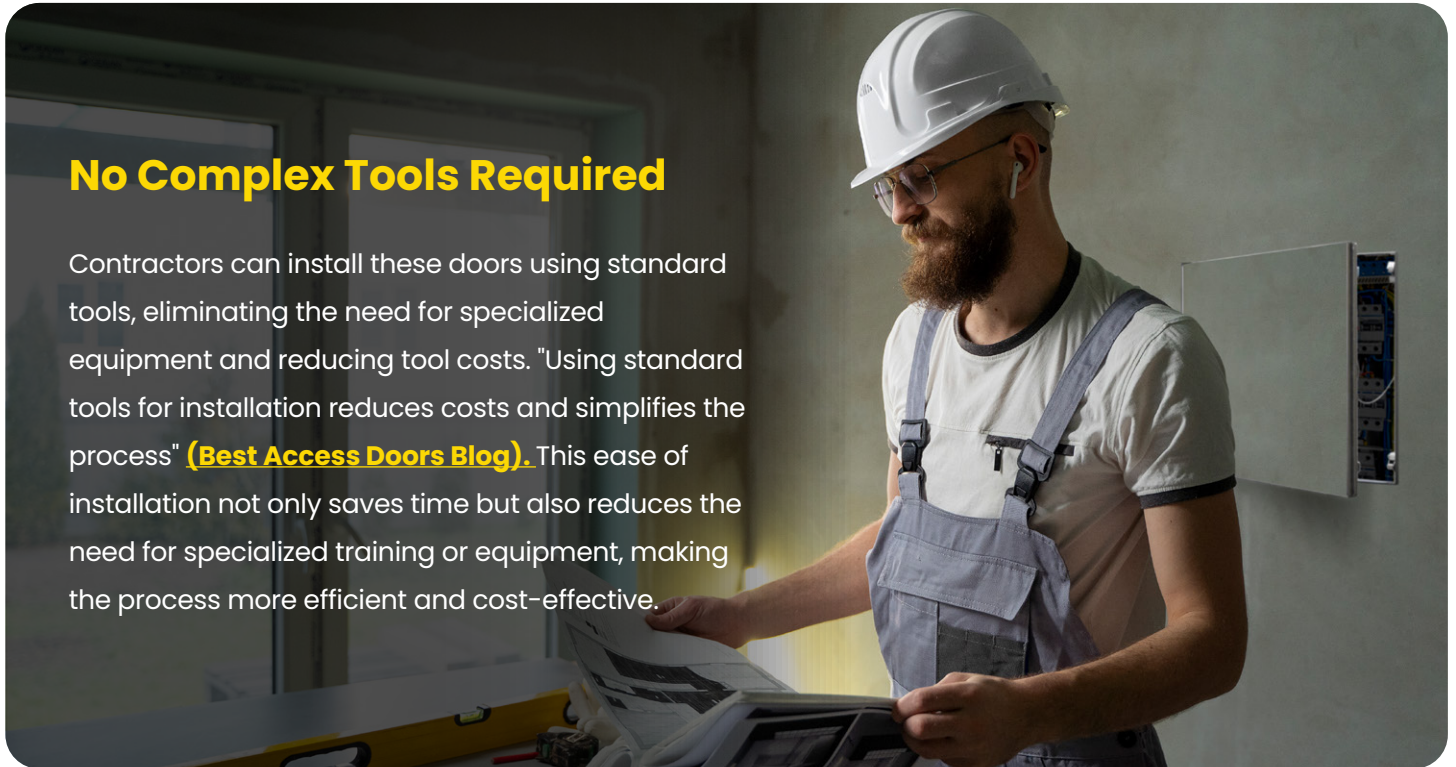




# Design Simplicity

## No Complex Tools Required

Contractors can install these doors using standard tools, eliminating the need for specialized equipment and reducing tool costs. "Using standard tools for installation reduces costs and simplifies the process" ([Best Access Doors Blog](#)). This ease of installation not only saves time but also reduces the need for specialized training or equipment, making the process more efficient and cost-effective.



## Minimal Training Needed

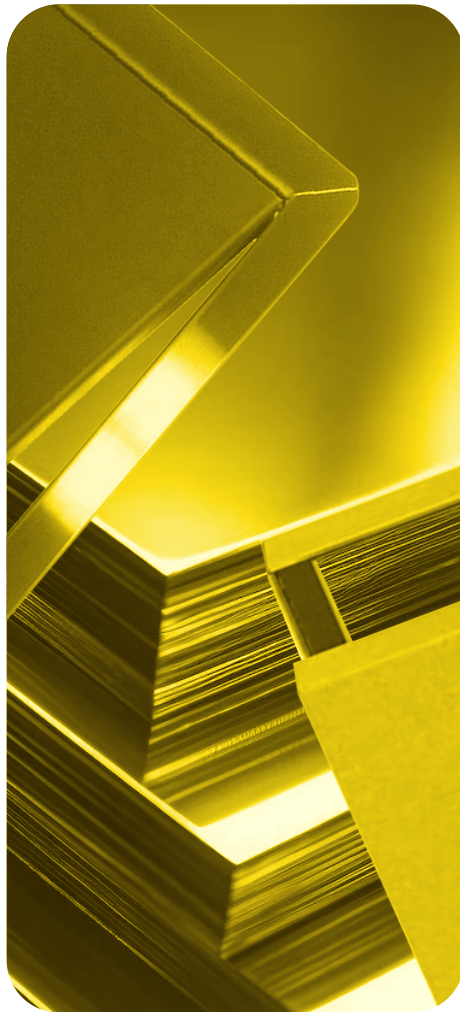
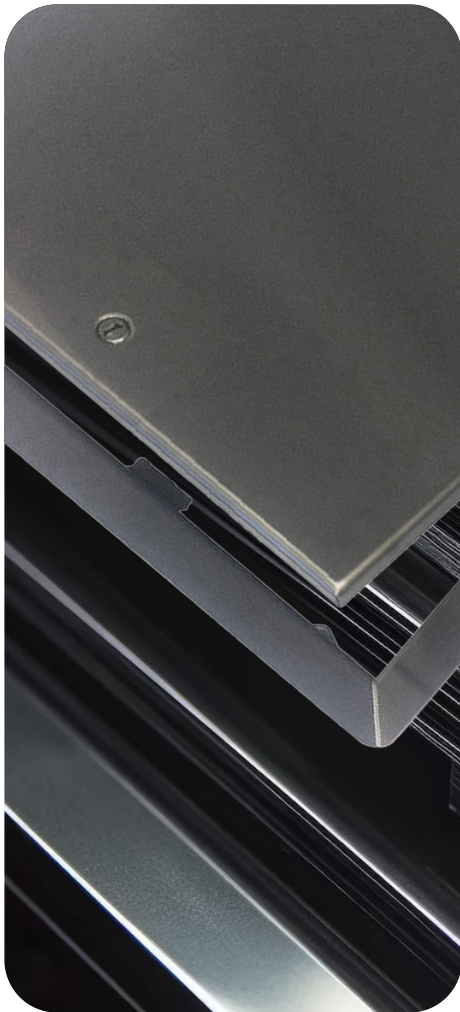
The straightforward installation process means that contractors do not need to invest in extensive training for their teams, further reducing project costs and speeding up the installation timeline. Minimal training requirements for installation save time and costs for contractors. This feature makes Best Access Doors an ideal choice for contractors looking to optimize their labor resources and reduce training expenses.







# Durability and Maintenance



## Durable Materials

Best Access Doors are constructed from high-quality materials such as 16-gauge cold-rolled steel and 20-gauge galvalume steel, ensuring strength and durability. This durability ensures that the doors can withstand harsh conditions and provide long-lasting performance, reducing the need for frequent replacements.

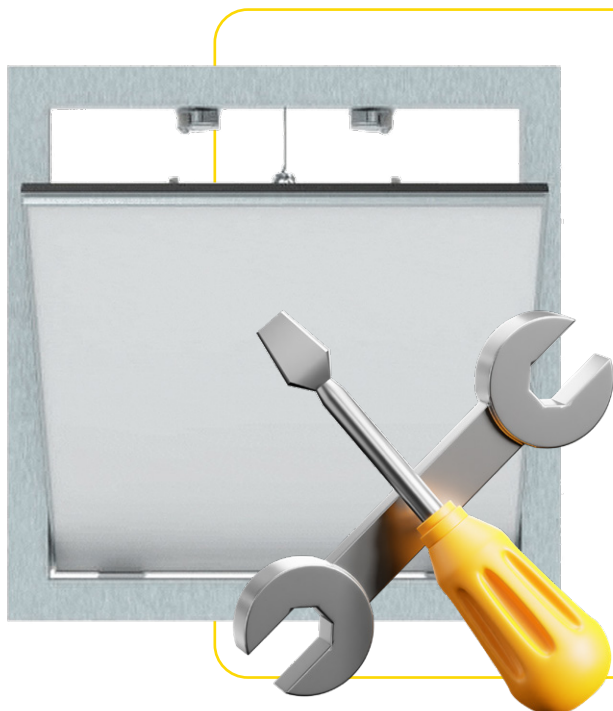


# Durability and Maintenance

## Withstands Harsh Conditions

These access doors are designed to endure tough environmental conditions, making them suitable for a wide range of applications in different climates.

"Products that withstand harsh conditions are essential for reliable performance in various applications" ([Bauwise](#)). This robustness makes Best Access Doors a reliable choice for any construction project, providing peace of mind that the installations will last and perform well over time.

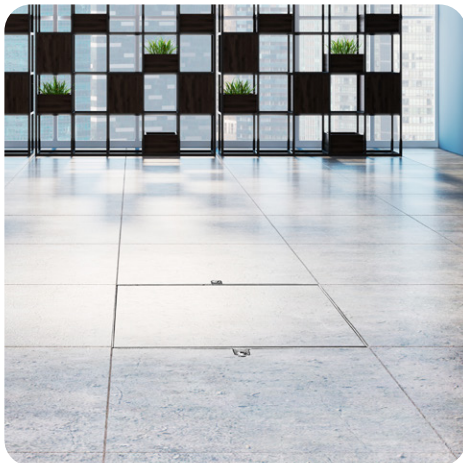


## Minimal Maintenance

Required The robust construction of Best Access Doors means they require less frequent maintenance and repairs, reducing long-term costs and disruptions to project schedules. Durable construction reduces the need for frequent maintenance, lowering long-term costs. This feature is particularly valuable for contractors looking to minimize maintenance-related expenses and ensure the longevity of their installations.



# Versatility



## Wide Range of Applications

Best Access Doors offer a wide range of models and sizes, making them suitable for installation in walls, ceilings, floors, and other surfaces. "A variety of models and sizes ensures suitability for different installation needs" ([Best Access Doors Blog](#)). This versatility ensures that there is a perfect fit for any project requirement, making it easier for contractors to find the right product for their needs.





# Versatility

## Tailored to Specific Requirements

Each product can be customized to meet specific project needs, ensuring optimal performance in different environments and conditions. "Customizable products meet specific project requirements, ensuring optimal performance" ([Best Access Doors Blog](#)). This customization capability makes Best Access Doors an ideal choice for projects with unique specifications, providing flexibility and adaptability.



## Perfect Fit for Any Project

Whether it's a commercial building, residential project, or industrial facility, there is a Best Access Door designed to meet the unique requirements of the project, providing a seamless fit and reliable performance. Tailored solutions provide a perfect fit for any project type. This ensures that contractors can rely on Best Access Doors for a variety of applications, making them a versatile and dependable choice.



CHAPTER 3:

# Communicating Value to Contractors





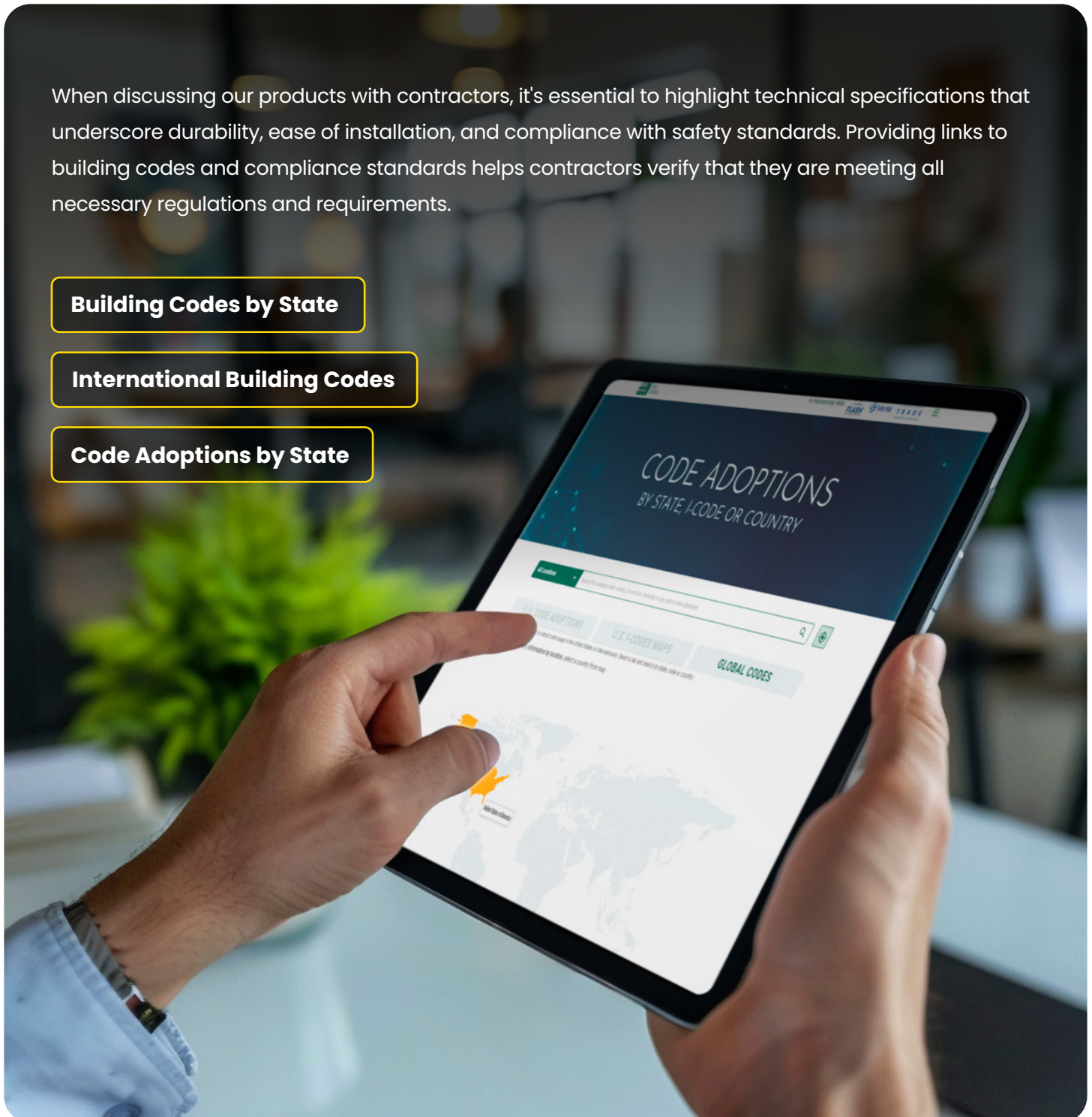
# Technical Specifications

When discussing our products with contractors, it's essential to highlight technical specifications that underscore durability, ease of installation, and compliance with safety standards. Providing links to building codes and compliance standards helps contractors verify that they are meeting all necessary regulations and requirements.

[Building Codes by State](#)

[International Building Codes](#)

[Code Adoptions by State](#)







# Cost-Benefit Analysis

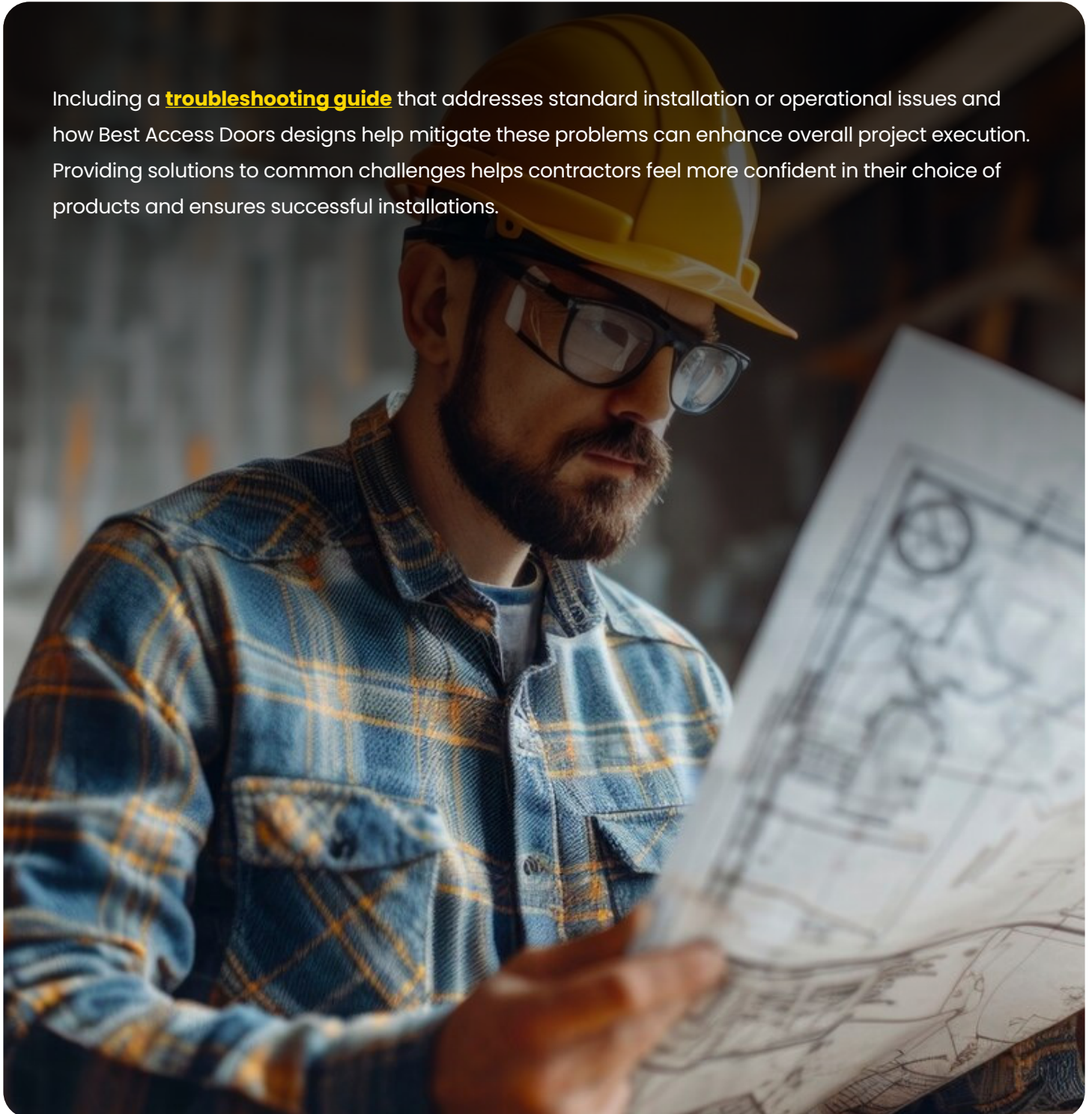
Providing a **cost-benefit analysis** can help demonstrate the long-term savings and benefits of using higher-quality access doors. By showing how initial investments can lead to reduced maintenance costs and fewer replacements, architects and contractors can see the value in choosing Best Access Doors. Tools and examples of cost-benefit analyses can be detailed to assist architects in making a compelling case.





# Troubleshooting Guide

Including a **troubleshooting guide** that addresses standard installation or operational issues and how Best Access Doors designs help mitigate these problems can enhance overall project execution. Providing solutions to common challenges helps contractors feel more confident in their choice of products and ensures successful installations.







## CHAPTER 4:

# Supporting Tools and Resources

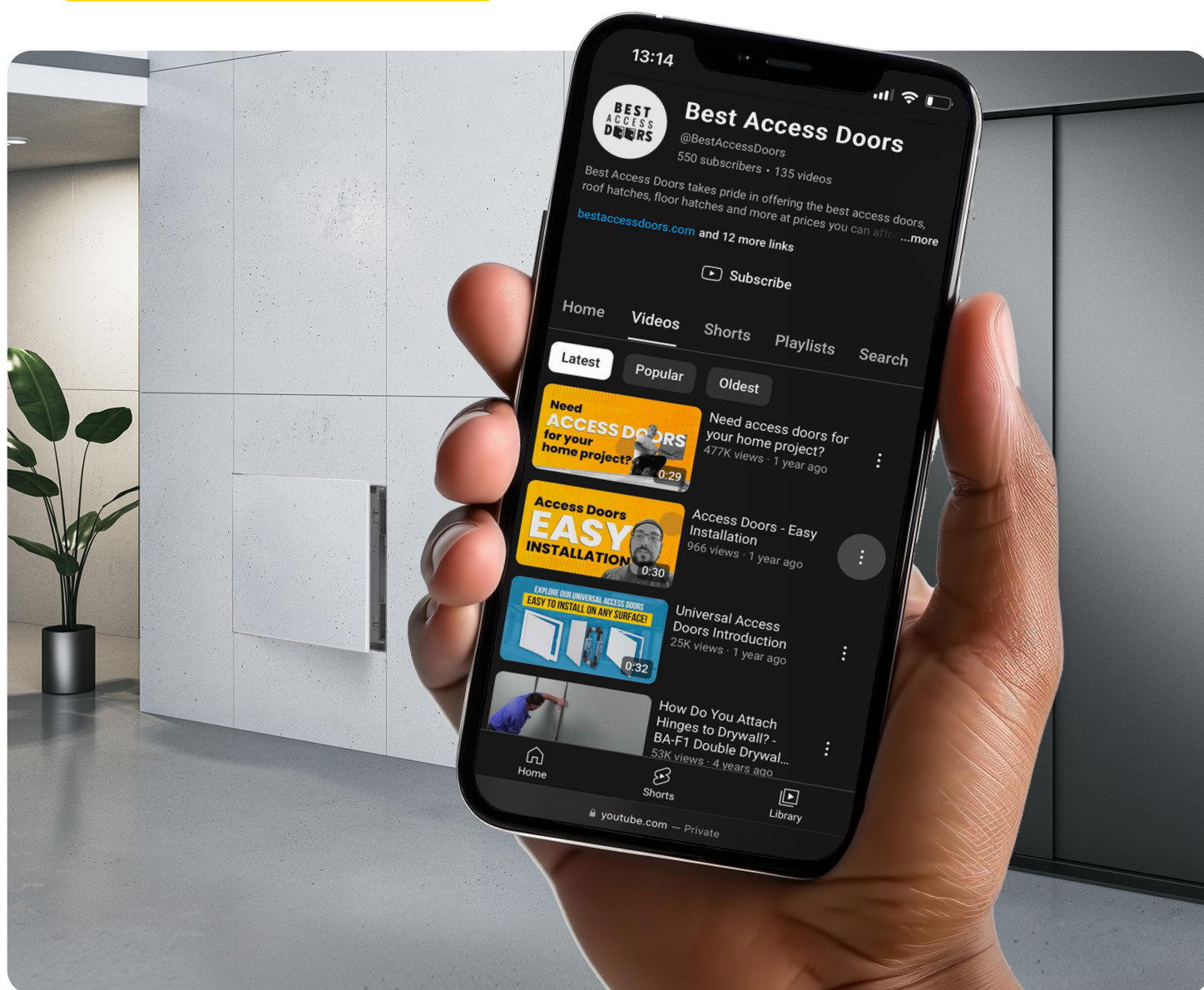




# Installation Guides

Detailed [installation guides](#) are available, and links to online video tutorials can be included, making it easy for contractors to access this information on-site. These resources provide [step-by-step instructions](#) and visual aids to help contractors complete installations efficiently and accurately.

## Installation Guides and Videos





# Specification Sheets

Easy-to-download [specification sheets](#) provide detailed information about each model, which can be shared directly with contractors to aid in the planning and execution phases of their projects. These sheets help ensure that all necessary details are communicated clearly, supporting successful installations.





# Contact Information

Ensure contractors know they have direct access to our [customer support](#) and technical assistance teams, providing them with the backup they need whenever they encounter challenges. This support helps resolve issues quickly and ensures that projects stay on track.

 [1-888-351-3347](tel:1-888-351-3347)

 [info@bestaccessdoors.com](mailto:info@bestaccessdoors.com)



## Conclusion

Thank you for exploring "Streamlining Success." We are confident that the insights and resources provided will help you effectively communicate the advantages of Best Access Doors to general contractors, ensuring your projects run smoother, faster, and more profitably.

Utilize this eBook as a critical resource in your discussions with general contractors. For further inquiries or personal consultations, visit Best Access Doors.

[Best Access Doors](#)

**BEST  
ACCESS  
DOORS**  
FOR ARCHITECTS