



TEAMCONNECT BAR SOLUTIONS

Flexibility that empowers.

The most feature-rich all-in-one conferencing devices in their class.



red dot winner 2023

SENNHEISER



TeamConnect Bar Solutions

Part of the Sennheiser TeamConnect Family, the TeamConnect Bar Solutions are scalable, all-in-one conferencing devices, designed to meet modern meeting demands with built-in camera, microphones and speakers. With options for small (TeamConnect Bar S) or mid-sized (TeamConnect Bar M) meeting and collaboration spaces, the TeamConnect Bar Solutions easily integrate with your favorite meeting platform and can be further enhanced with other compatible products, including those from Sennheiser.



Benefits



High Video Quality

Technology excels when it fades into the background and you almost forget it's there. In meetings, this means that both the audio and video has to be on point.

The TeamConnect Bar Solutions feature some of the latest advances in meeting technology to further enhance modern hybrid meetings and lectures - taking video to the next level. The **4K Ultra HD camera** is further enhanced by AI features like "**Autoframing**" and "**Person Tiling**", not only enabling all remote participants to clearly see everyone in the room, but also ensuring increased meeting inclusion and engagement.

Flexibility and scalability

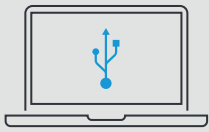
The TeamConnect Bar Solutions give you unparalleled freedom and flexibility. Choose the right TeamConnect Bar for your room size - TeamConnect Bar S for smaller rooms and TeamConnect Bar M for mid-sized rooms. With **built-in DSP** and available **single cable mode**, you can reduce cables and complexity. Integrated features, like the tilting mechanism, cable guide, available **PoE** and the option of using **Dante** for adding **extension mics**, and a **2nd external camera via USB**, make the device even more flexible and scalable.



Management and Control

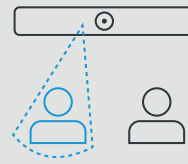
While the TeamConnect Bar Solutions will work great out of the box for many spaces, we offer a variety of options for management and control. With the **Sennheiser Control Cockpit**, you can work with presets to make preconfigured adjustments based on mounting position.

Exclusion Zones are designed to exclude unwanted noises, while **Priority Zone** can prioritize and highlight one presenter or a podium area. And thanks to our open and agnostic ecosystem philosophy, the TC Bars are also compatible with many major **Media Control Systems** and **Platforms** from our **Alliance Partners***



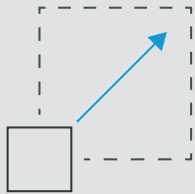
Plug and Play Device

Quick start via USB cable



Integrated Beamforming Technology

Freedom of movement and seamless transition among presenters



Flexible Extensions

Using Dante for adding extension mics and a 2nd external camera via USB



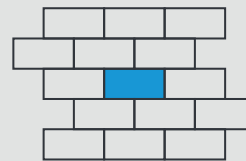
High Video Quality

4K Ultra HD camera equipped with advanced AI features



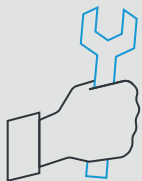
Full-Range Stereo Speakers

Natural speech and outstanding intelligibility



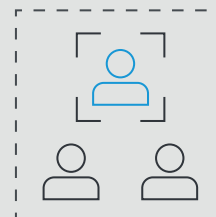
Built-In DSP

Automatically optimizes room acoustics



Multiple Mounting Options

Wallmount, VESA Mount, Tabletop or Freestanding



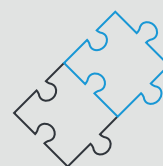
Autoframing and Person Tiling

Features to clearly see everyone in the room



Control Management

Full remote-control access via Sennheiser Control Cockpit



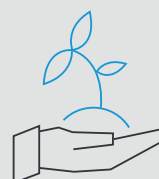
Brand Agnostic Integration

Effortless integration with 3rd party media control systems and communication platforms*



Advanced Security Features

Encrypted control communication and password protected by default for secure content transmission



Sustainability

Products “made to last” and sustainable packaging

* Certifications approved for 3rd party media control systems (Barco, Crestron, Extron and Q-Sys, etc.) and platforms (Zoom, Microsoft Teams). Certifications pending for platforms (Tencent, Dingtalk etc.)



TEAMCONNECT BAR S

All-in-one device for small collaboration rooms.

The TC Bar S is the most flexible all-in-one device for small meeting rooms and collaboration spaces. The TC Bar S features 4 microphones and 2 speakers to deliver Trusted Sennheiser Audio Quality to every meeting. The TC Bar S is a true problem solver with benefits like easy setup, brand agnostic integration, easy management & control, high video quality, security and sustainability.





Small meeting room equipped with TC Bar S.

Mounting Options



Wallmount



VESA Mount



Tabletop



Free Standing

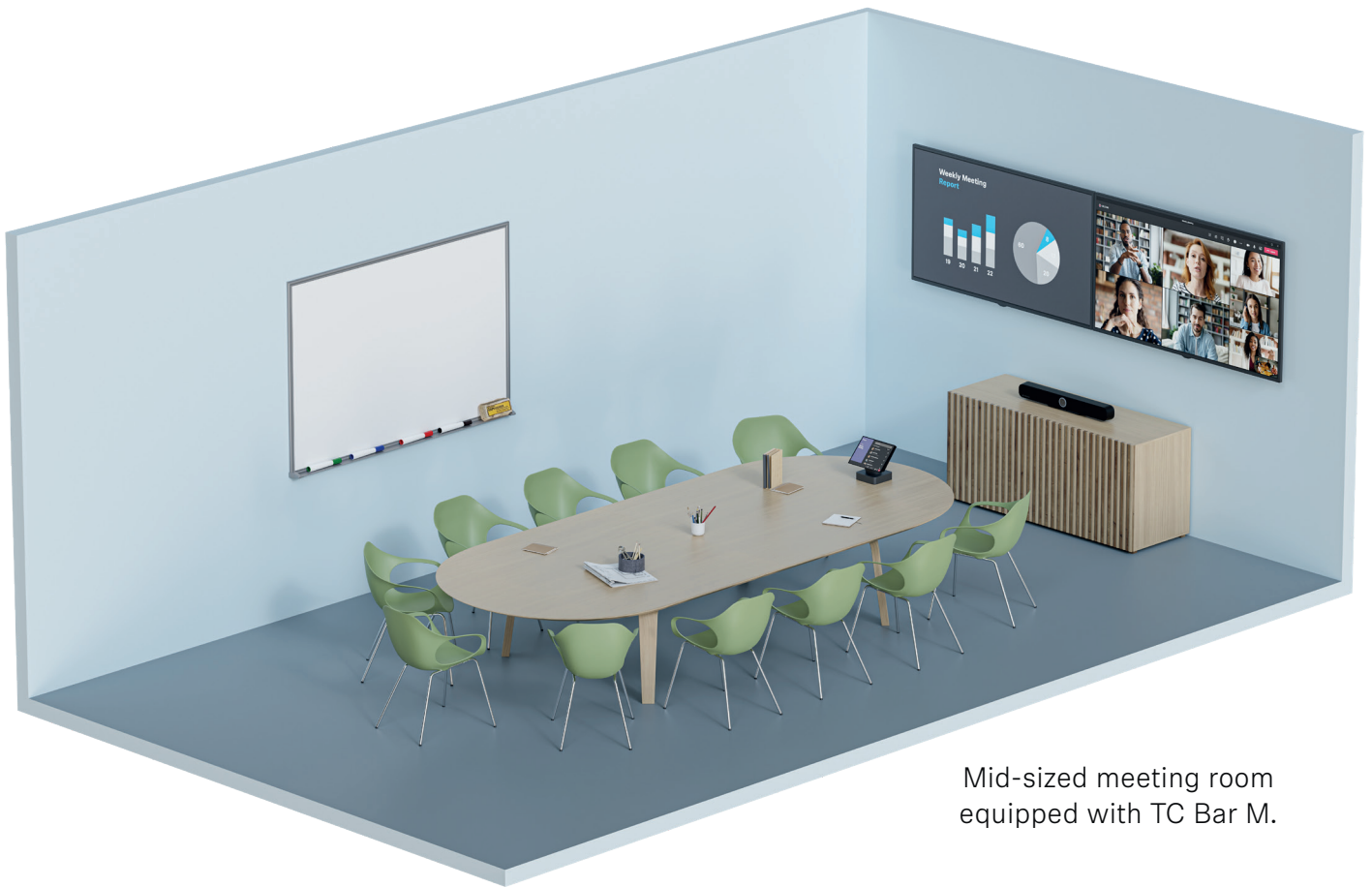


TEAMCONNECT BAR M

All-in-one device for mid-sized collaboration rooms.

The TC Bar M is the most flexible all-in-one device for mid-sized meeting rooms and collaboration spaces. The TC Bar M features 6 microphones and 4 speakers to deliver Trusted Sennheiser Audio Quality to every meeting. The TC Bar M is a true problem solver with benefits like easy setup, brand agnostic integration, easy management & control, high video quality, security and sustainability.





Mid-sized meeting room equipped with TC Bar M.

Mounting Options



Wallmount



VESA Mount



Tabletop



Free Standing



TC Bar S/M

Technical specifications

General	TC Bar S	TC Bar M
Dimensions (L x B x H)	450 x 71 x 76 mm	750 x 71 x 95 mm
Weight	1.5 kg	2.5 kg
Operating temperature range	0 °C to 40 °C 32 °F to 104 °F	
Storage temperature range	-25 °C to 70 °C -13 °F to 158 °F	
Relative humidity operation	0 to 75 %, non-condensing	
Relative humidity storage	0 to 95 %, non-condensing	
DC IN	15 V $\overline{\text{DC}}$, max. 2 A	18 V $\overline{\text{DC}}$, max. 4 A
Max. power consumption	30 W	72 W
Voltage range PoE (PD)	42.5 – 57.0 V $\overline{\text{DC}}$ (IEEE 802.3at Type 2, PoE+)	44.0 – 57.0 V $\overline{\text{DC}}$ (IEEE 802.3at Type 1, PoE)
Power State Information	<ul style="list-style-type: none"> • Standby Mode (all ports deactivated) ≤ 0.50 W (Entered after < 2.5 hours with no activity on any port) • Network Standby (all ports activated) ≤ 2.00 W (Entered after < 20 minutes of inactivity) 	<ul style="list-style-type: none"> • Standby Mode (all ports deactivated) ≤ 0.50 W (Entered after < 2.5 hours with no activity on any port) • Networked Standby (Ethernet ports in use) ≤ 7.00 W (Entered after < 20 minutes of inactivity) • Network Standby (all other ports) ≤ 2.00 W (Entered after < 20 minutes of inactivity)

TC Bar S/M

Technical specifications

Loudspeaker	TC Bar S	TC Bar M
Number of speakers	2 with passive radiator	4 with passive radiator
Type	fullrange	fullrange
Diameter	50 mm (2")	50 mm (2")
Amplifier	Class-D	
Max. SPL (output)	80 dB SPL	84 dB SPL
Total Audio Power (RMS/PEAK)	10 W / 20 W	20 W / 40 W
Frequency response	100 Hz - 18 kHz	100 Hz - 18 kHz
THD at max. output	<5 %	

Microphones	TC Bar S	TC Bar M
Transducer principle	MEMS	
Pick-up pattern	Beamforming Array	
Number of microphone capsules	4	6
Frequency range	100 Hz to 14.5 kHz	100 Hz to 14.5 kHz
Pickup range	3.5 m	4.5 m
Dynamic range	69 dB (A)	69 dB (A)

Interfaces	TC Bar S	TC Bar M
HDMI out	1x HDMI 2.0	2x HDMI 2.0
USB-C	USB 3.1 (Gen 1)	
USB-A power output	USB 3.1 (Gen1); 5 V $\overline{\text{DC}}$, max. 900 mA	
DC IN dimension	5.5 x 2.1 x 10.5 mm	
Ethernet	1 x 1000/100/10 Mbit/s (RJ45)	2 x 1000/100/10 Mbit/s (RJ45)

Note: Only use network cables with the standard CAT5e (F/STP) or better.

Camera	TC Bar S	TC Bar M
Technology	ePTZ	
Diagonal field of view	120°	
Horizontal field of view	115°	
Resolution	UHD 2160p (4K), 1080p, 720p, 960×480, 848×480, 640×480, 640×360, 432×240	
Zoom	3x digital zoom	5x digital zoom



The Future of Audio

Sennheiser electronic GmbH & Co. KG
Am Labor 1, 30900 Wedemark, Germany



**Get in touch
with us now!**

sennheiser.com/tcbars