

# Ceiling Tiles

VIRI



**KWICKSCREEN®**  
MAKING SPACES



## Things are looking up...

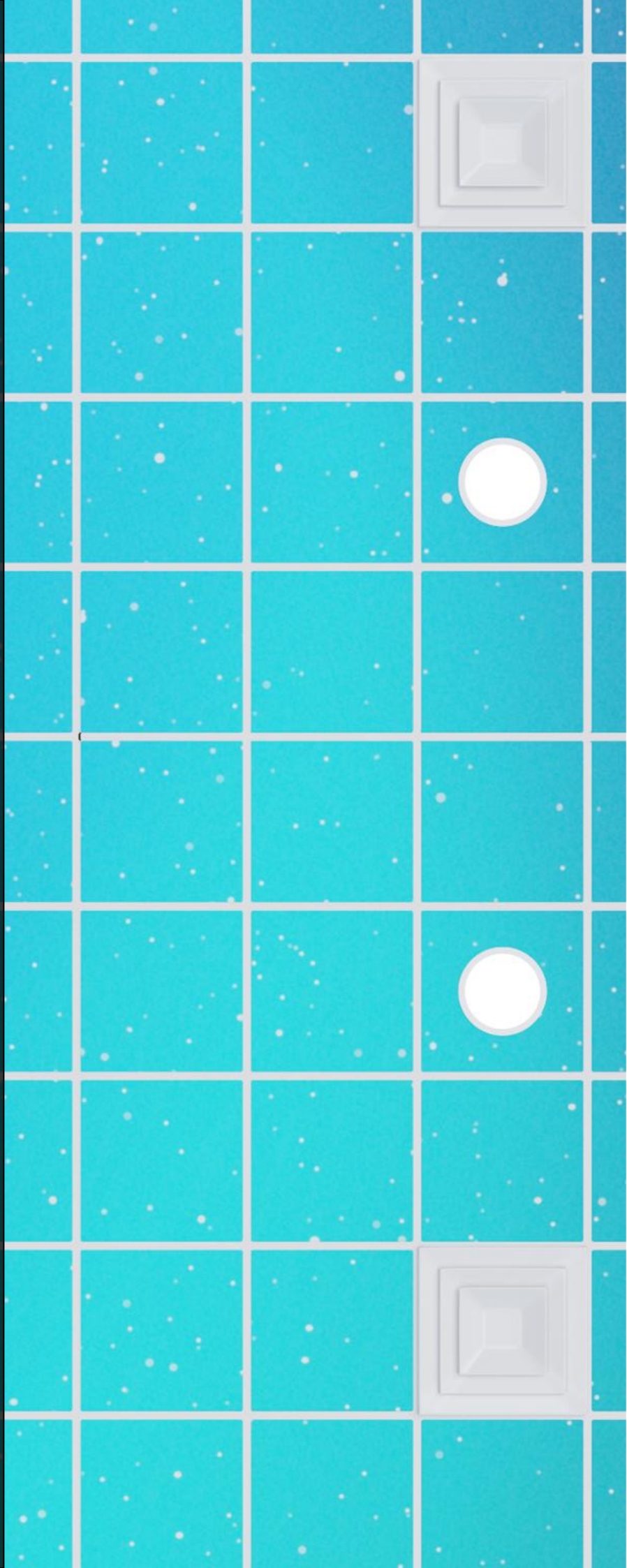
We make spaces better.

Better for you, your patients and your team.

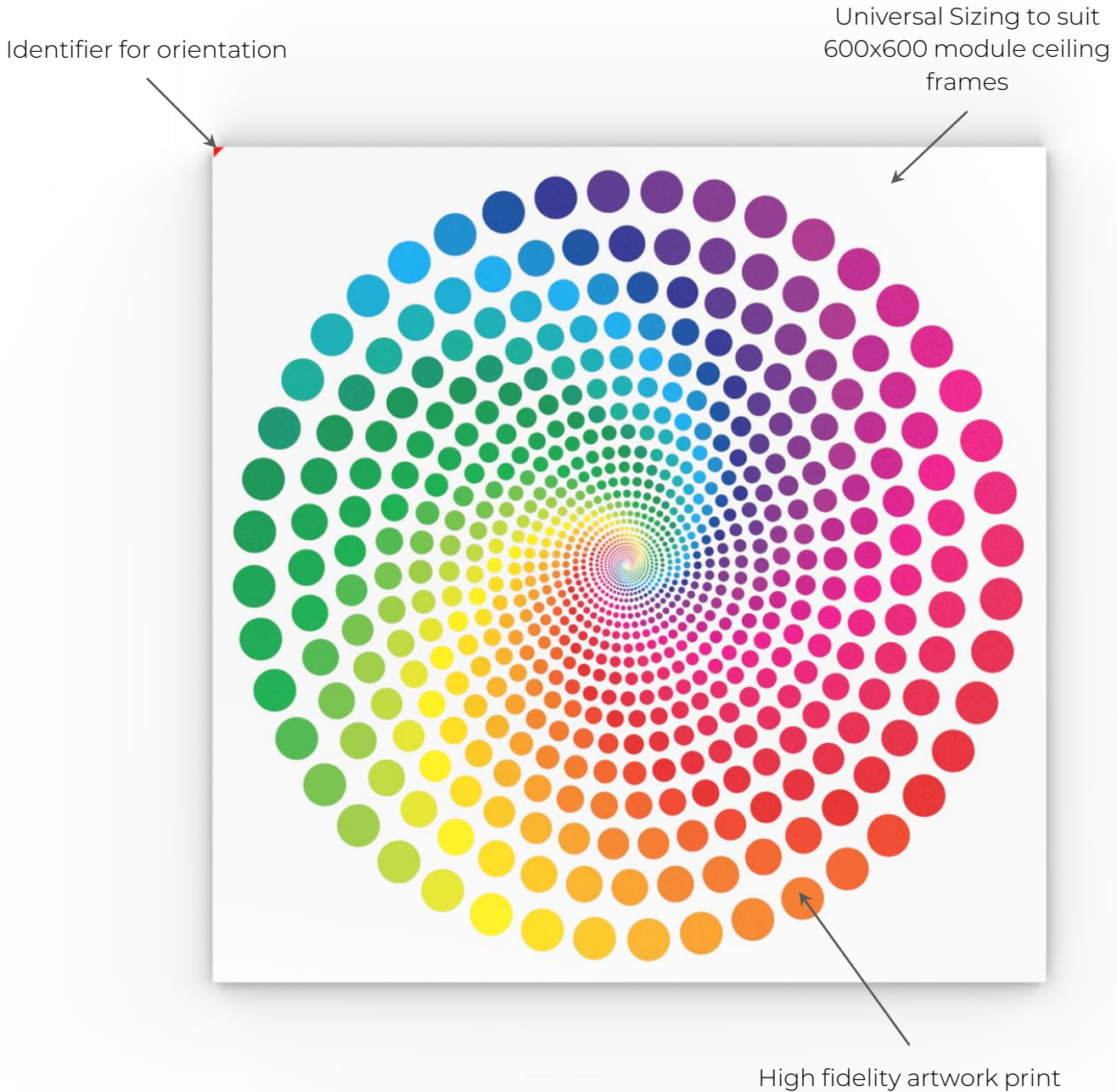
We do this with our strong belief that the use of artwork and colour makes a clinical setting more relaxing for all in its embrace.

When we embarked on this journey, we quickly saw a need to improve medical interiors in a speedy and simple way, making it realistic for our clients to implement within a short time frame.

Through this, our ceiling tile range was launched, providing universal panels that simply slot into existing areas with carefully curated artwork to suit.



# Take boring down



Our tiles are beneficial for a number of reasons:

- Create wellbeing with a non intrusive, quick to install solution
- All artwork is infinitely scalable, no need to worry about stretched, blotchy images
- Images can be picked from our library or custom sourced/generated to your requirement\*
- Panels are pre-marked to show layout and orientation
- Universal fitment to suit existing suspended ceiling systems
- Complies with building regulations
- Easy to cut/modify on site to change the size or fit around pipes etc
- Is made containing an integral Biocide to prevent the growth of fungi and bacteria, including MRSA, Ecoli 0157 and Salmonella for the lifespan of the tile
- 100% recyclable at end of life

\* Subject to additional costs

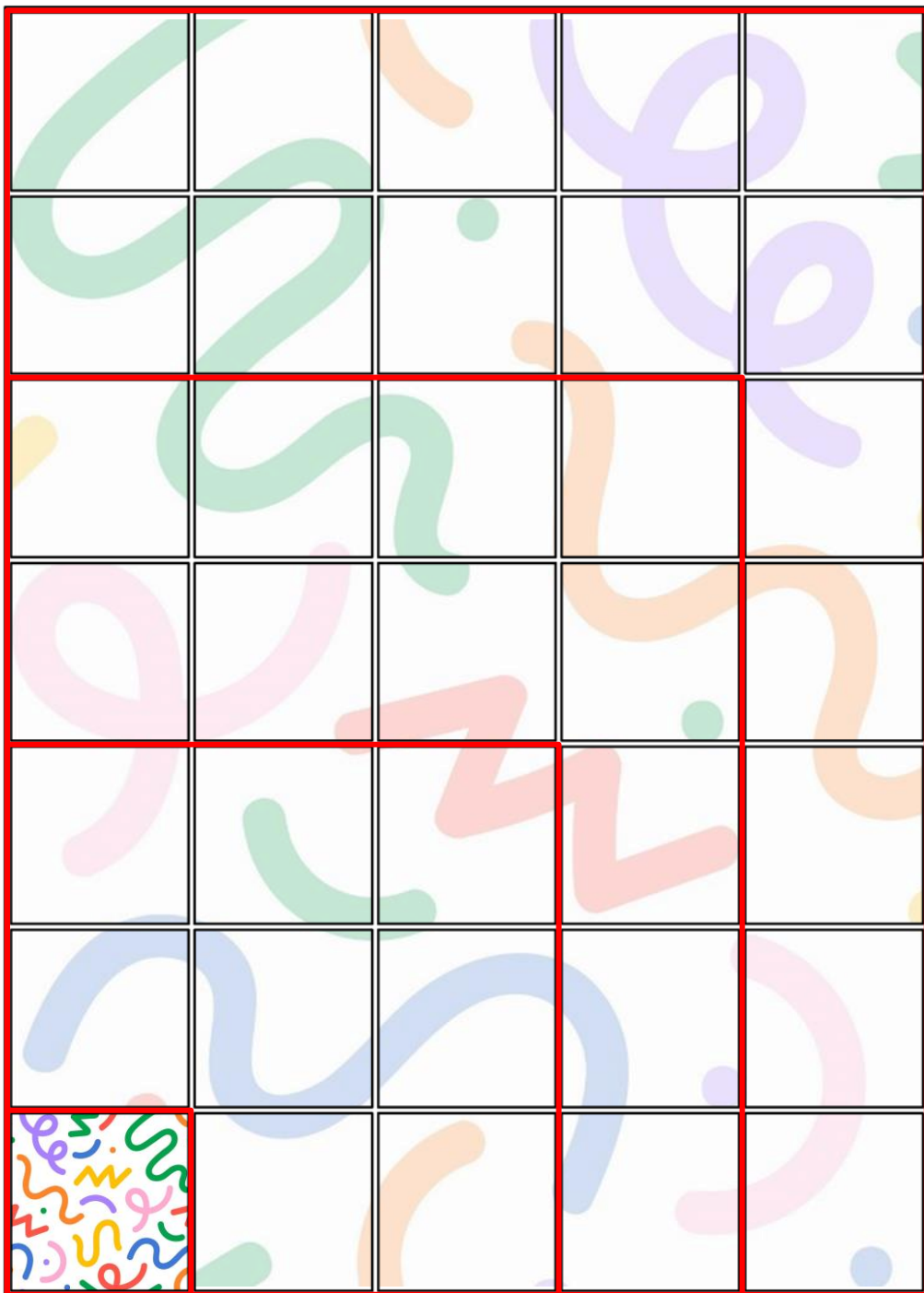
# Scaling Up

Whatever the size, we guarantee a high quality print

Choosing the size of your artwork used to be laborious and time consuming. The fear of carefully picking your art and patiently waiting for it to come in only to find it looks pixelated and blotchy is a real concern for our clients.

Luckily, we have a smart solution. All our artwork is carefully selected to be infinitely scalable meaning you have no worries; the hardest part is choosing the right fit for you. After that, we scale it, send you a visual to sign off and then you just wait for your lovely tiles to arrive.

See the below visual for the same artwork at two different sizes.

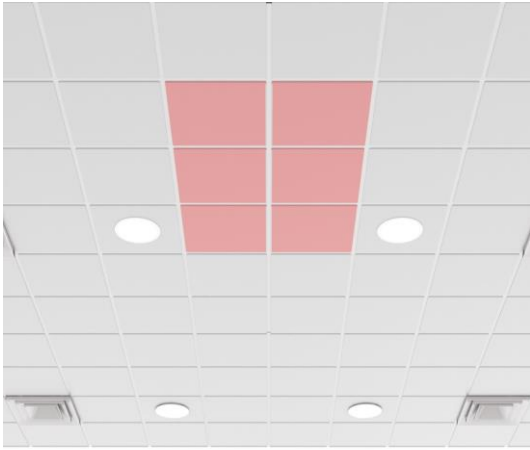




# Choosing Change

A step by step guide to specifying Art Tiles

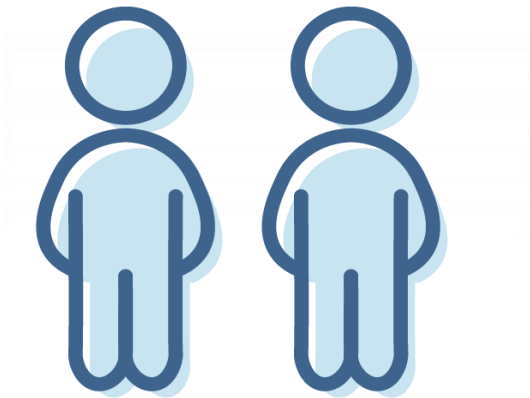
1. Count how many tiles you'd like to change.  
Count across first and then up, the below would be 2 x 3 tiles



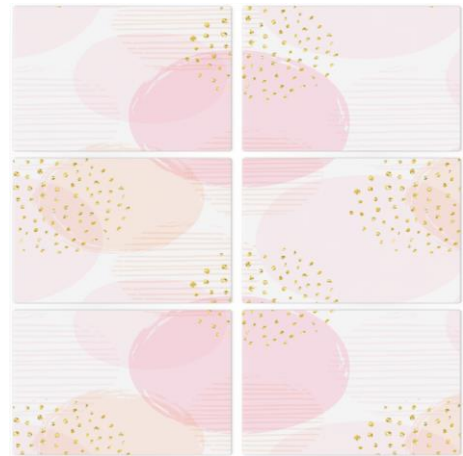
2. Choose your artwork from our library, or consult with us to custom make one.



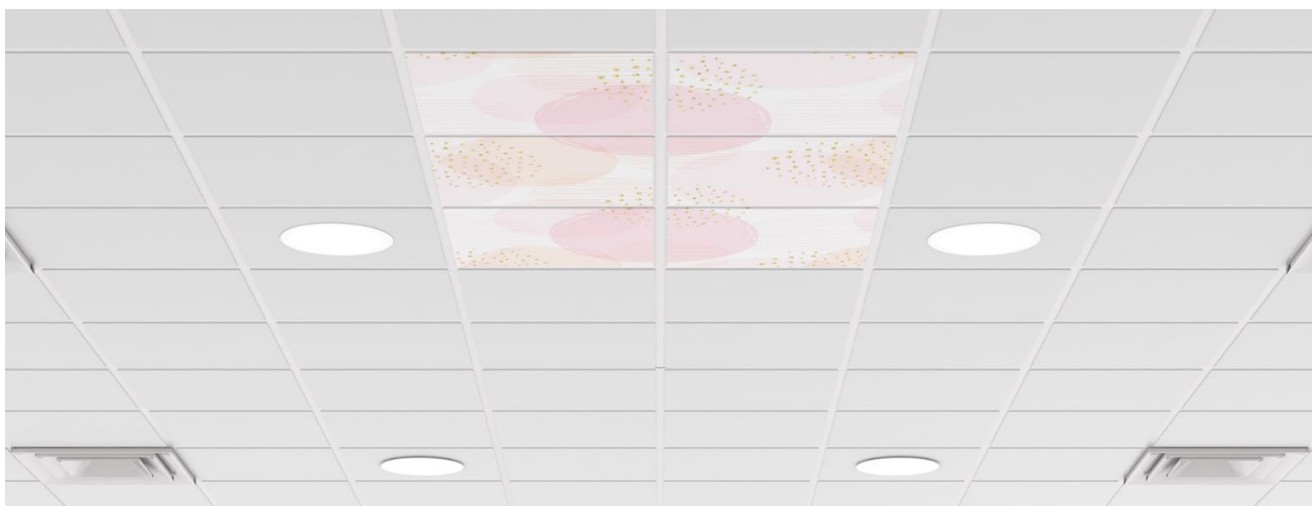
3. Talk to your account manager to order



4. Review / sign off the visual sent to you

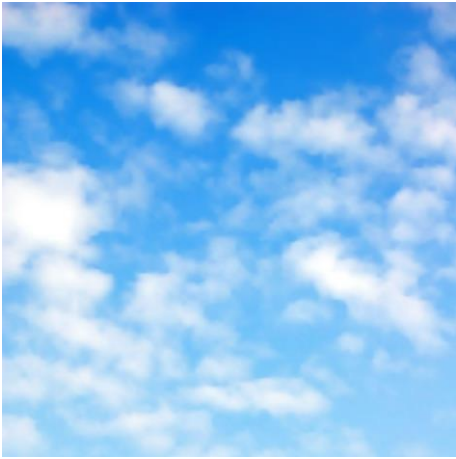


5. Install and enjoy!

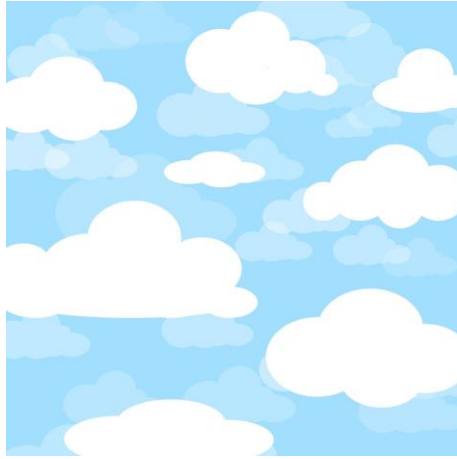


# Choices, Choices...

## Sky and Clouds



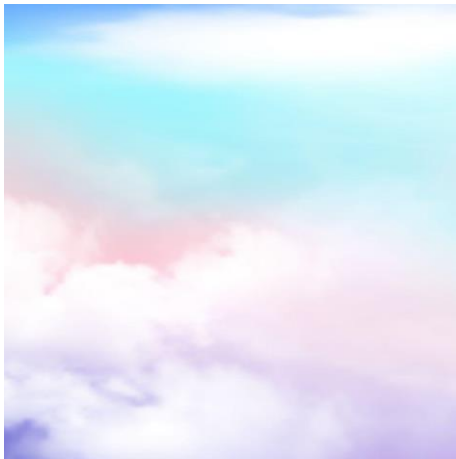
CT-CI1



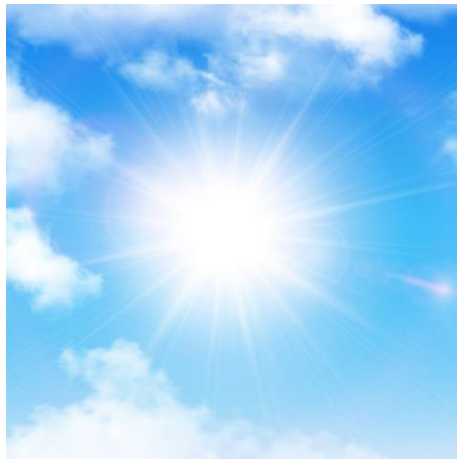
CT-CI2



CT-CI3



CT-CI4



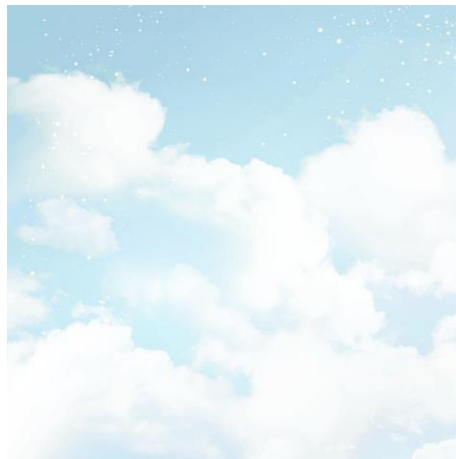
CT-CI5



CT-CI6



CT-CI7



CT-CI8



CT-CI9

# Choices, Choices...

## Nature



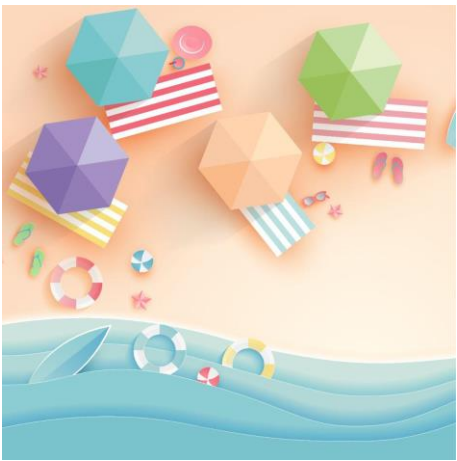
CT-FR1



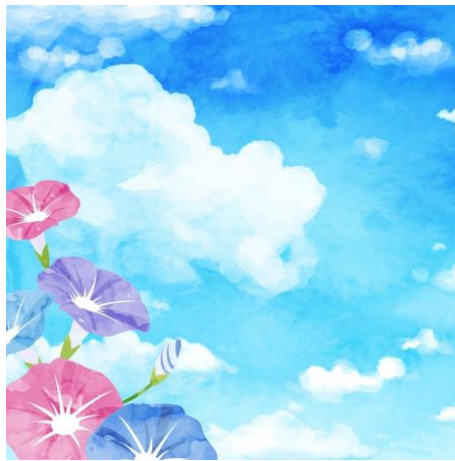
CT-FR2



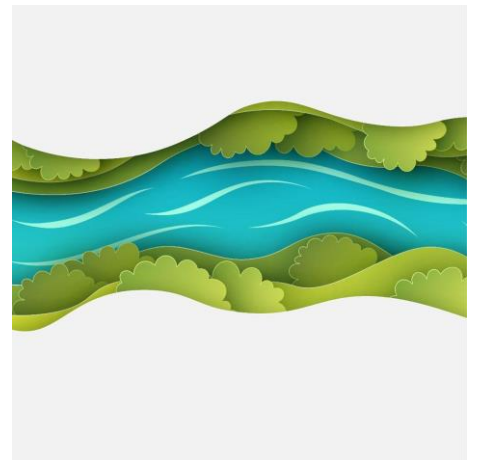
CT-FR3



CT-FR4



CT-FR5



CT-FR6



CT-NT7



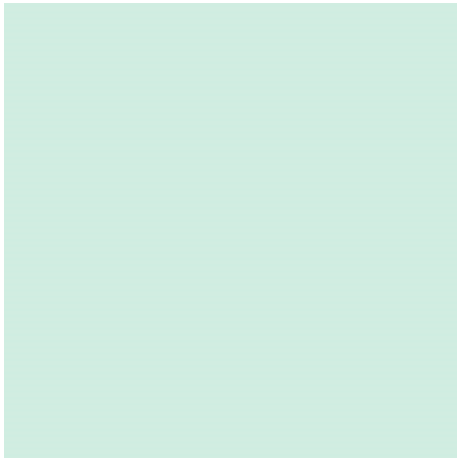
CT-NT8



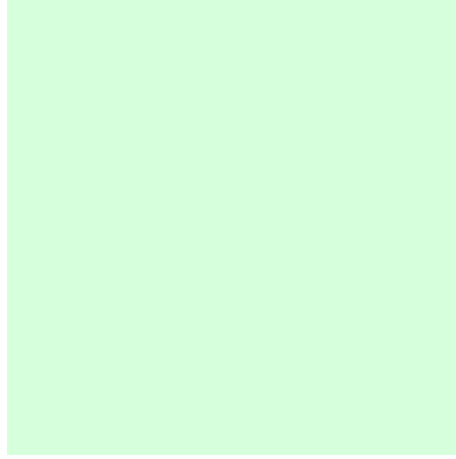
CT-NT9

# Choices, Choices...

## Pastel



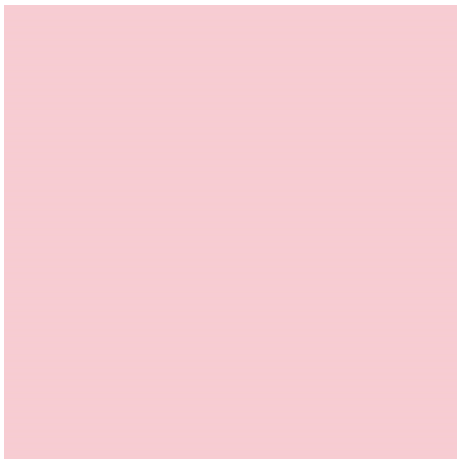
CT-PT1



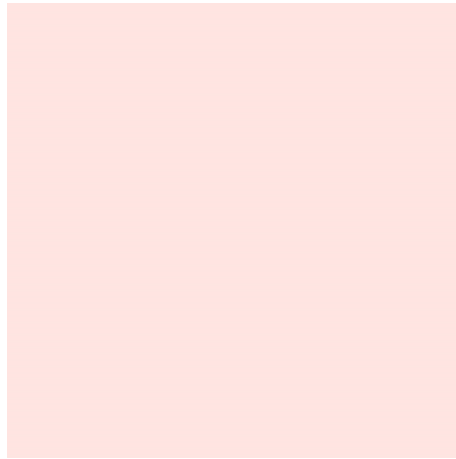
CT-PT2



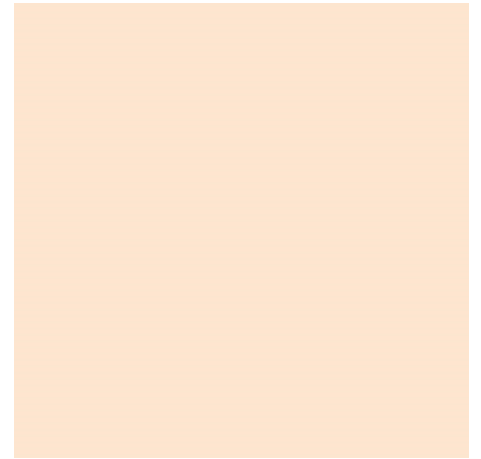
CT-PT3



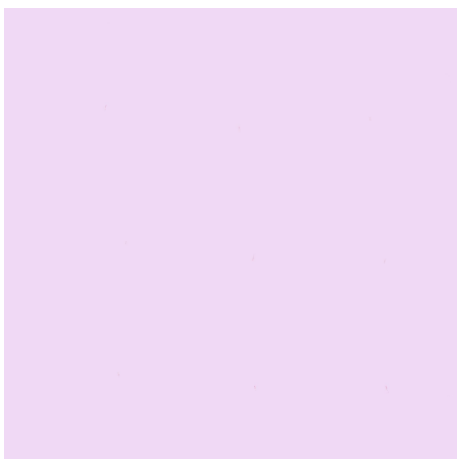
CT-PT4



CT-PT5



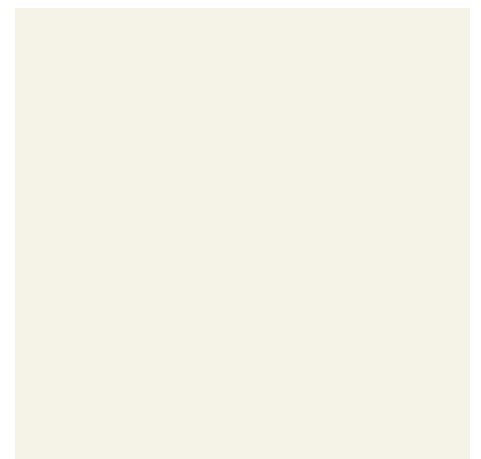
CT-PT6



CT-PT7



CT-PT8



CT-PT9

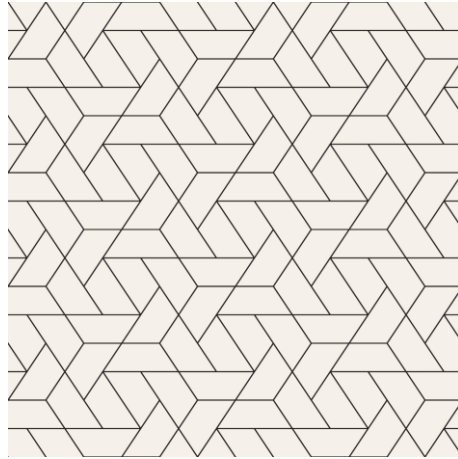


# Choices, Choices...

## Patterns



CT-PA1



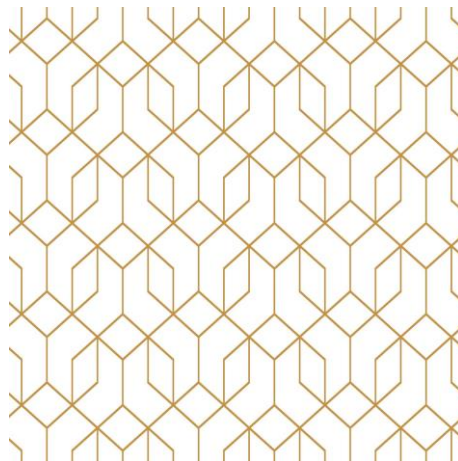
CT-PA2



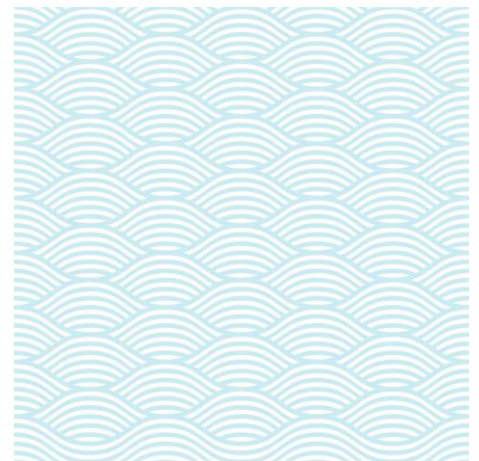
CT-PA3



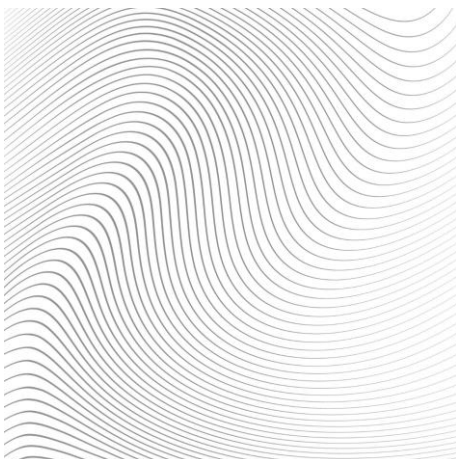
CT-PA4



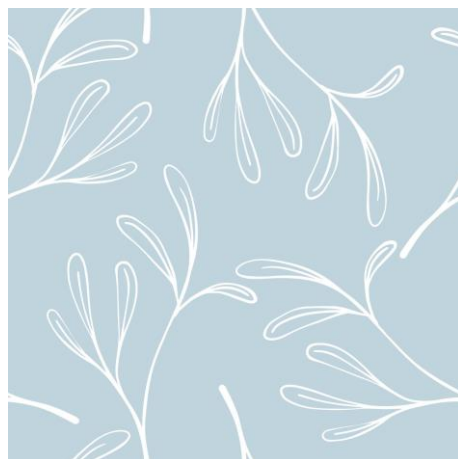
CT-PA5



CT-PA6



CT-PA7



CT-PA8

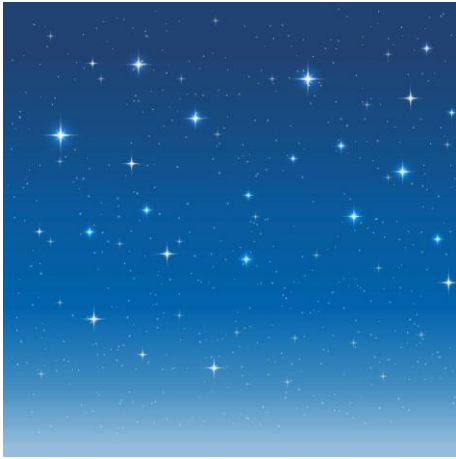


CT-PA9



# Choices, Choices...

## Stars



CT-ST1



CT-ST2



CT-ST3



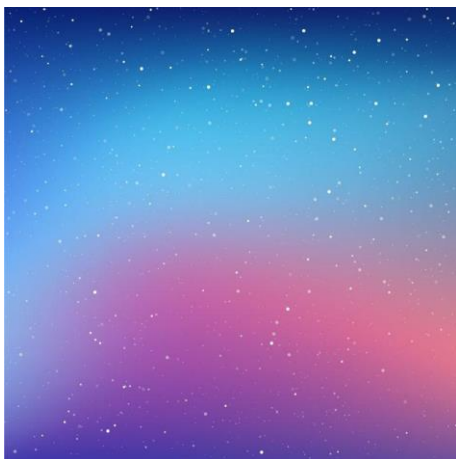
CT-ST4



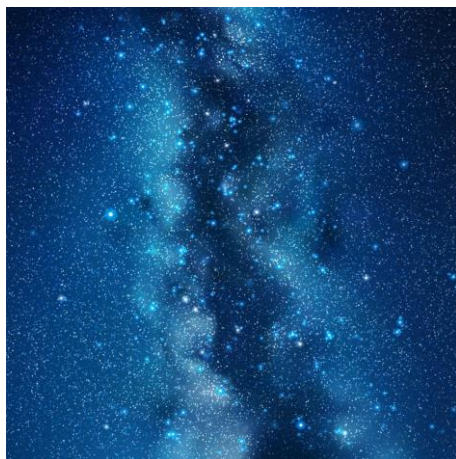
CT-ST5



CT-ST6



CT-ST7



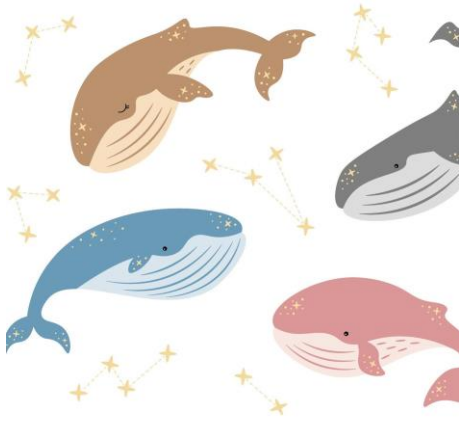
CT-ST8



CT-ST9

# Choices, Choices...

## Zoo



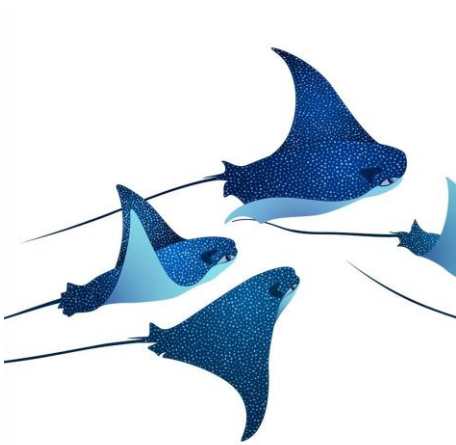
CT-ZO1



CT-ZO2



CT-ZO3



CT-ZO4



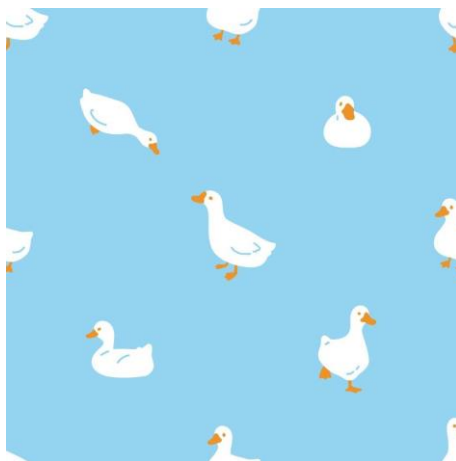
CT-ZO5



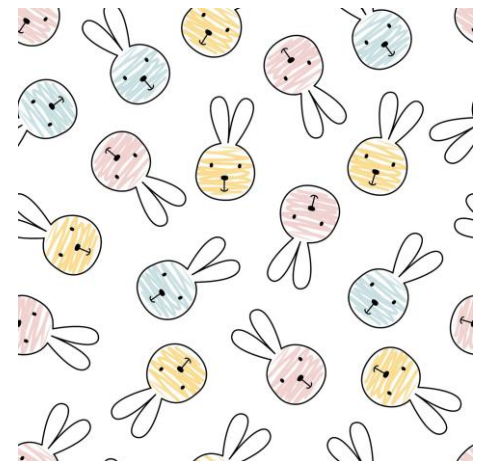
CT-ZO6



CT-ZO7



CT-ZO8



CT-ZO9



# Choices, Choices...

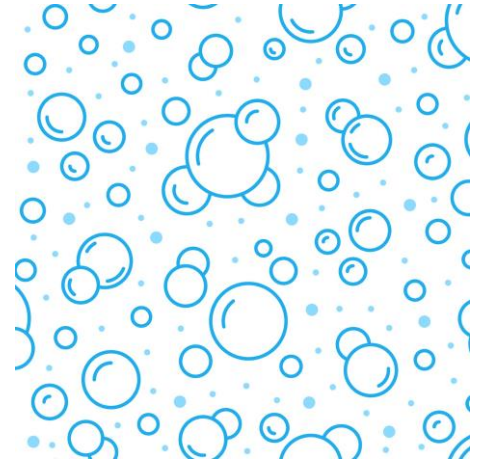
## Bubbles



CT-BUB1



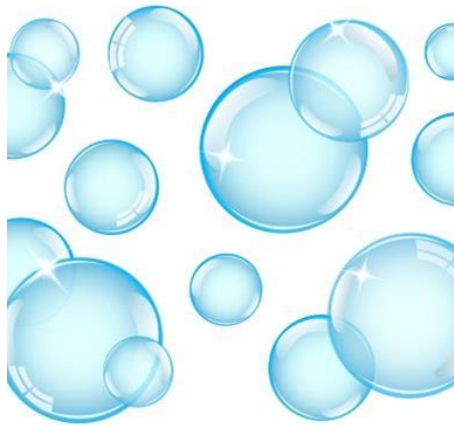
CT-BUB2



CT-BUB3



CT-BUB4



CT-BUB5



CT-BUB6

# Physical properties

Tile size to suit:  
600mm x 600mm  
1200mm x 600mm

Thickness: 8mm

Edge type: A Edge

Print Type: Latex

Material: Gypsum core with  
smooth, unperforated satin finish

Mass: 6.2 kg/m<sup>2</sup>

# Product performance

Acoustic performance:  
 $D_{ncw}$  up to 37 dB in accordance  
with BS EN 20140-9: 1994 and  
rated in accordance with BS EN  
ISO 717-1: 1987

Light reflectance: 88% (white  
only)

Reaction to fire Class:  
0, Euroclass B-s1, d0

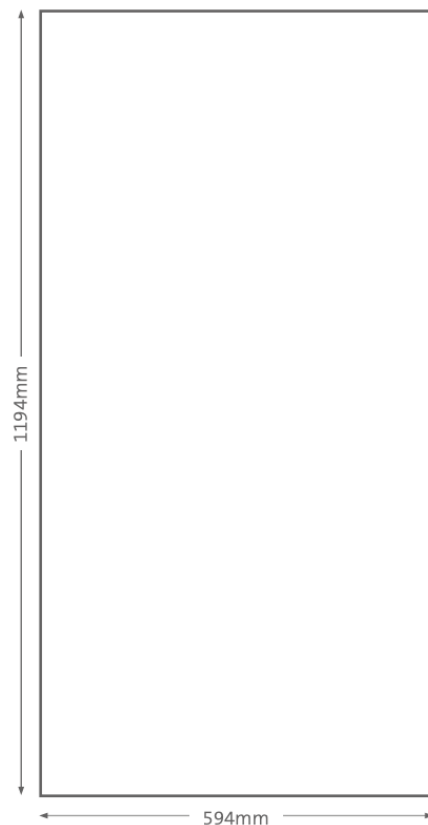
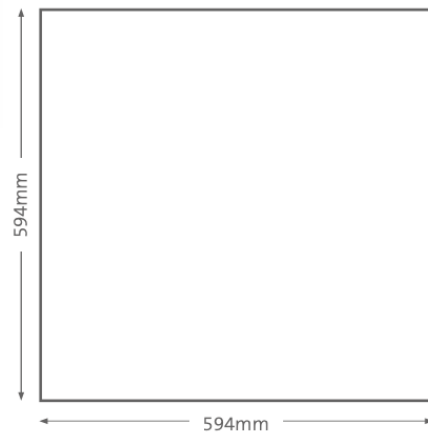
Fire resistance 30 minutes:  
to BS476 Part 23 when used with  
CasoLine quick-lock  
grid and hangers

Moisture resistance: Max 90%  
relative humidity

Temp resistance: Max 49°C  
continuous exposure

Water vapour resistance: 45  
MNs/g

Loading capability: Max 3kg per  
tile without pattering, max  
2mm deflection



# KWICKSCREEN®

## MAKING SPACES

Visit [www.kwickscreen.com](http://www.kwickscreen.com) for our full range.

E: [Stuart@kwickscreen.com](mailto:Stuart@kwickscreen.com)

T: +44 208 0905199

M: +44 7894 172872

Available assets:

- Hi res image drive
- Certificates and academia
- Revit CAD blocks
- RRP pricing
- Print catalogue and guides
- Product videos