

DuraPak™

**“The Quiet Solution”
DP500-HD**

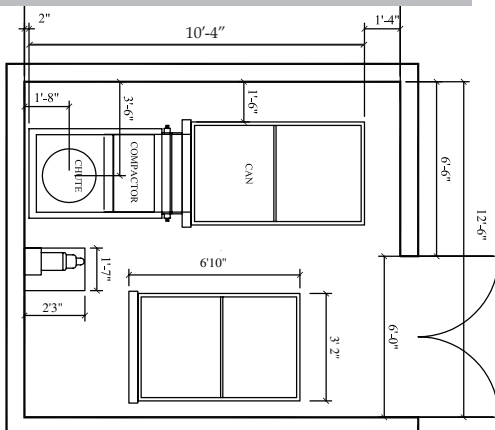
DuraPak™500-HD Compactor delivers exceptional quality and power while running more quietly than similar models. Designed for high-rise applications, DuraPak™ machines are ideal choices for hotels, hospitals, apartment and office buildings. For use with compaction cans.



STANDARD FEATURES

- Remote Power Unit
- “UL” Labeled Control Panel
- 208/240/480 Volt 5HP Motor
- Photo Electric Eye With Time Delay
- Automatic Cycle
- Mushroom Stop Button
- On/Off Key Switch
- 2 Interlocked Side Access Doors with Automatic Shut-Off
- Night Shut Down
- Programmable Logic Control (PLC)
- ANSI Compliant
- Ratchet Turnbuckle Hook-Up
- Soft Shift Single Solenoid Valve
- Replaceable Low Friction, Noise Reducing Wear Pads
- On Light
- Container Full Light
- Oil Pressure Gauge
- Excessive Run Timer
- Maintenance Reminder Indicator
- 208/240/480V Control Panel
- Access Door on Both Sides
- Adjustable/Interchangeable Left/Right Side Container Hookup

TYPICAL COMPACTOR ROOM



OPTIONS

- 110 V Single Phase Motor
- Rear or Front Loading Containers
- Odor Control System
- Hopper Sound Deadening Package
- Single Side Container Hook Up

HYDRAULICS

No of Cylinders	2
Bore/Rod	2.5"/1.375
Cylinder Stroke	20"
Pump	6.0 GPM
Valve	Single Solenoid Soft Shift
Oil Reservoir	14 GAL
Normal Cycle Time	Adjustable 13.7-60 Sec
Normal Pressure	Adjustable 1350-1650 PSI
Max. Pressure	1950 PSI
Normal Force	13,900 LBS / 23.2 PSI

RAM

Top Plates	1/4"
Sides	1/4"
Floor	3/8"
Face Plate	3/8"
Steel Wiper	3" x 1/4"
Replaceable Wear Pads	YES
Ram Penetration	4.25"

COMPACTOR FRAME

WASTEC Rated Size	0.34
Hopper Top Opening	38" x 30"
Capacity Per Hour	77 cu. Yards
Floor (1/4" + 1/4" Wear Plate)	1/2"
Breaker Bar	4" x 3" x 1/2"
Side Plates	1/4"
Hopper Sides & Front	11 GA.
Hopper Impact Plate	1/4"
Ratchet Turnbuckle Cap.	38,000 lbs
Weight w/o Power Unit	1600 lbs
Compaction Chamber	30" x 21" x 26.5"
Machine Dimensions	46"L x 39"W x 65"H

ELECTRICAL

Motor (TEFC)*	5HP
“UL” Labeled	YES
Power	208/240/480 3 Phase
NEMA Type Fuse	YES
Photo Electric Eye	YES

*Totally Enclosed Fan Cooled

33 Industrial Park Drive, Waldorf, MD 20602 | 800.88-CHUTE | 240.448.5000 | FAX 301.753.4108 | www.durapak.org | email: info@chutes.com

The DuraPak compactor is subject to our continuous improvement program, and we reserve the right to implement changes and improvements to the products shown herein without prior notice.
©2018 CHUTES International Manufacturing, LLC

Loaded With Extras At Standard Prices!
www.chutes.com | 1.800.882.4883

DuraPak™
500-HD