



TITONI

WINDOW SYSTEMS



FINISH SELECTIONS



A GUIDE TO YOUR FINISH OPTIONS

TITONI WINDOW SYSTEMS



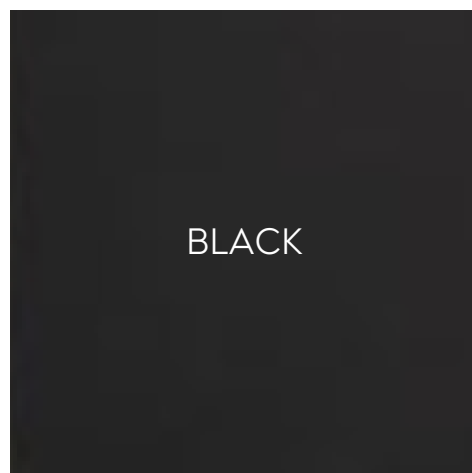
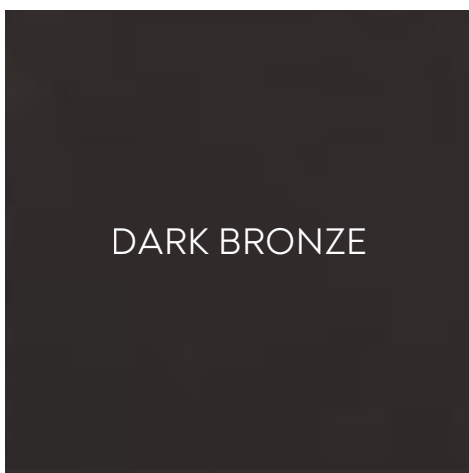
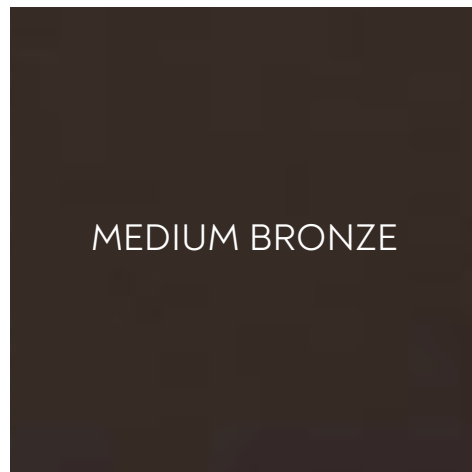
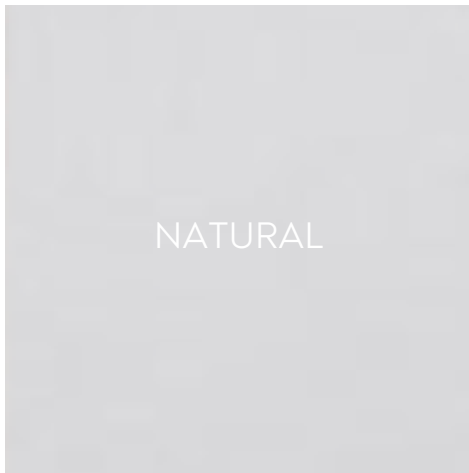
Anodizing is an electrochemical process that strengthens and protects aluminum by creating a thick, extremely durable oxide layer on its surface. This layer becomes part of the metal itself, it doesn't chip, peel, or flake.

Kynar coatings are high-performance architectural finishes made from polyvinylidene fluoride (PVDF) resin, typically 70% PVDF and 30% acrylic. They are considered the gold standard for exterior metal coatings because of their exceptional durability and long-term color stability.

Powder Coating is a finishing process where a dry, colored powder is sprayed onto metal using an electrostatic gun. The charged powder sticks to the metal surface, and then the part is placed in an oven where the powder melts and cures into a smooth, protective coating. We offer both European and American options.

*Please note that these samples represent general color tones; actual shades may vary based on factors such as film thickness, material condition, and substrate. To request an official color sample, please email samples.service@titoniwindows.com.

ANODIZED FINISH SELECTION



KYNAR SELECTION



A color chart titled "KYNAR SELECTION" featuring six color swatches arranged in a 3x2 grid. Each swatch is a solid square with a color name and a code printed in white text in the center. The colors transition from light to dark from top-left to bottom-right.

UC72861
SAHARA SAND

UC105741
FAIRVIEW TAUPE

UC51515XL
MEDIUM BRONZE

UC128462
CHOCOLATE

UC110460
BRONZE

UC40577
BLACK

A modern interior space featuring large potted plants, a marble wall, and a glass partition. The scene is bathed in warm, golden light. In the foreground, a large, light-colored wooden planter holds a tall palm-like plant. To the right, another similar planter holds a variety of green plants, including a large monstera. The background consists of a wall with large, light-colored marble tiles and a glass partition that reflects the plants. The floor is made of light-colored stone tiles.

T

WWW.TITONIWINDOWS.COM | INQUIRE@TITONIWINDOWS.COM