



TITONI

WINDOW SYSTEMS





S38 SEAMLESS - HURRICANE SPECS

S38 SEAMLESS

HURRICANE TESTED & APPROVED

TITONI USA has revolutionized the sliding door industry in Dade County by successfully testing an invisible sill. Our S38 Seamless Series, minimal frame sliding glass door, with its flush and sleek hidden tracks, allow flooring to flow from interior to exterior living space. The seamless transition from inside to out can now be achieved in South Florida.

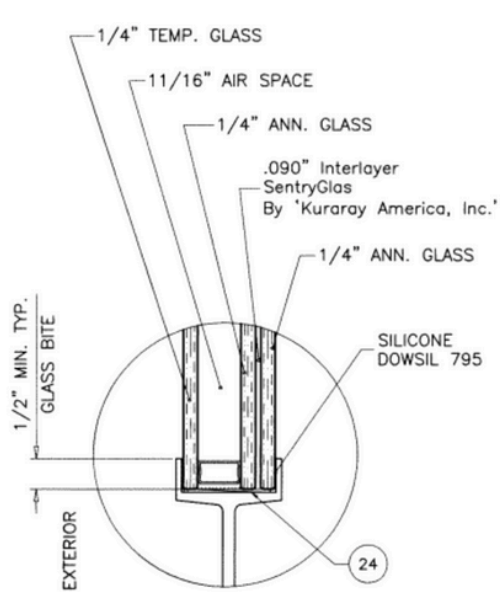
Over 20 years of fenestration experience has been poured into TITONI USA, which has now become the preeminent minimal frame product offered in the American market.



The SentryGlas interlayer used in our laminated unit is 5x stronger and up to 100x more rigid than conventional PVB interlayers found in other laminated glass.

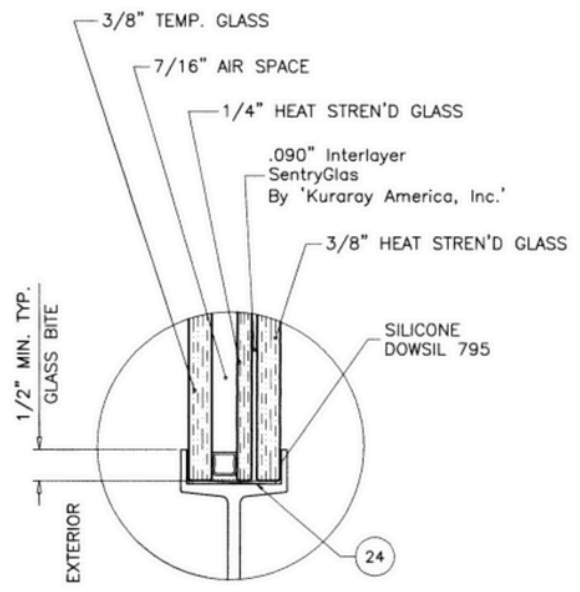






GLASS TYPE 'A'

1-1/2" OVERALL INSUL. LAM. GLASS



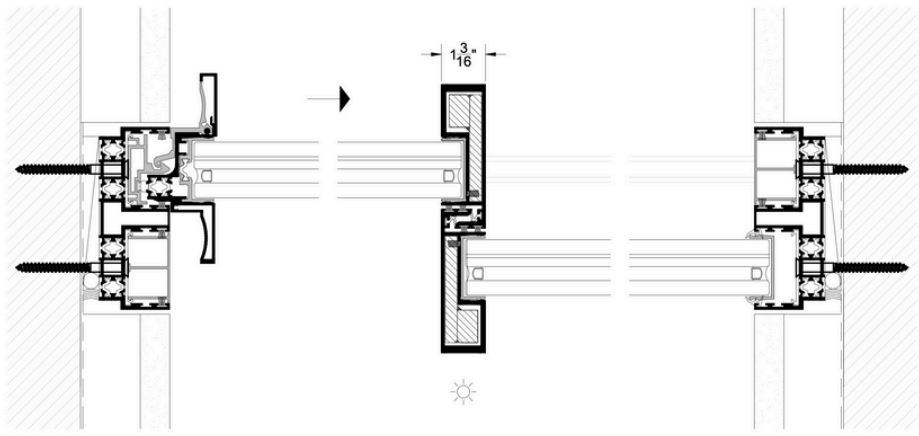
GLASS TYPE 'B'

1-1/2" OVERALL INSUL. LAM. GLASS

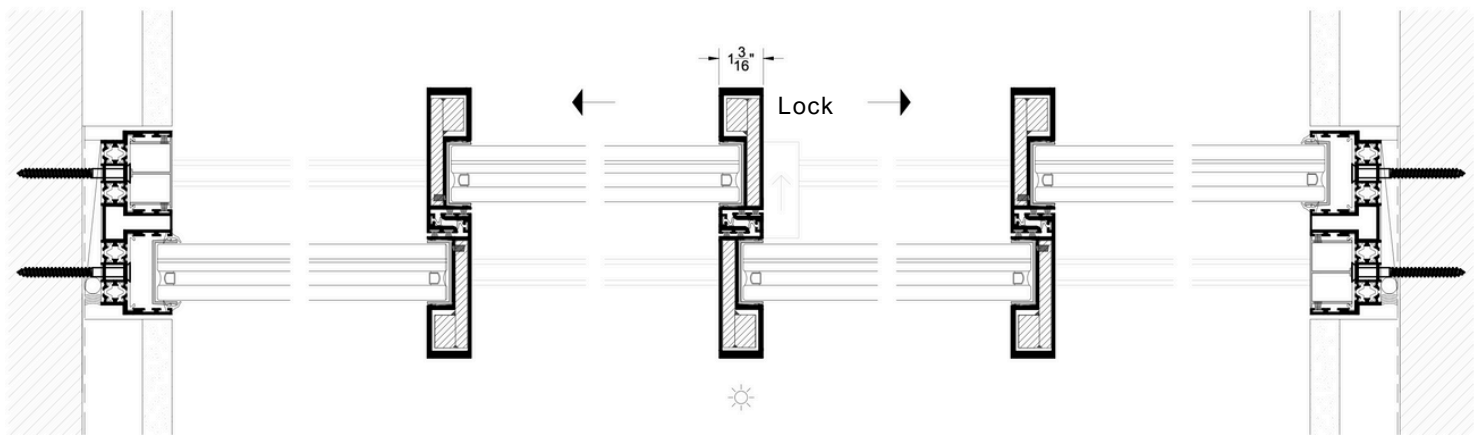




30MM FRAME (+ 65 / - 65 PSF)



12'-5" max. net-frame height | 75 s.f. max. panel area

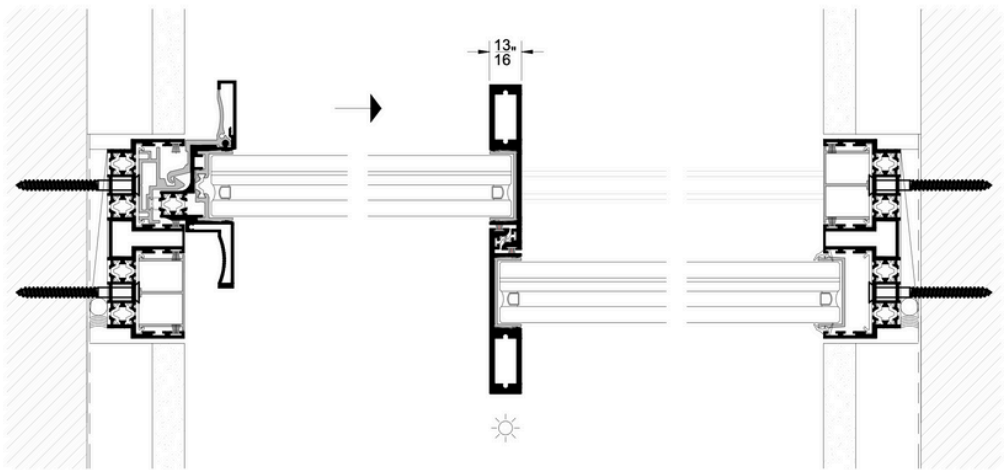


Up to 12 panels | Up to 12 tracks | 877 s.f. max. frame area

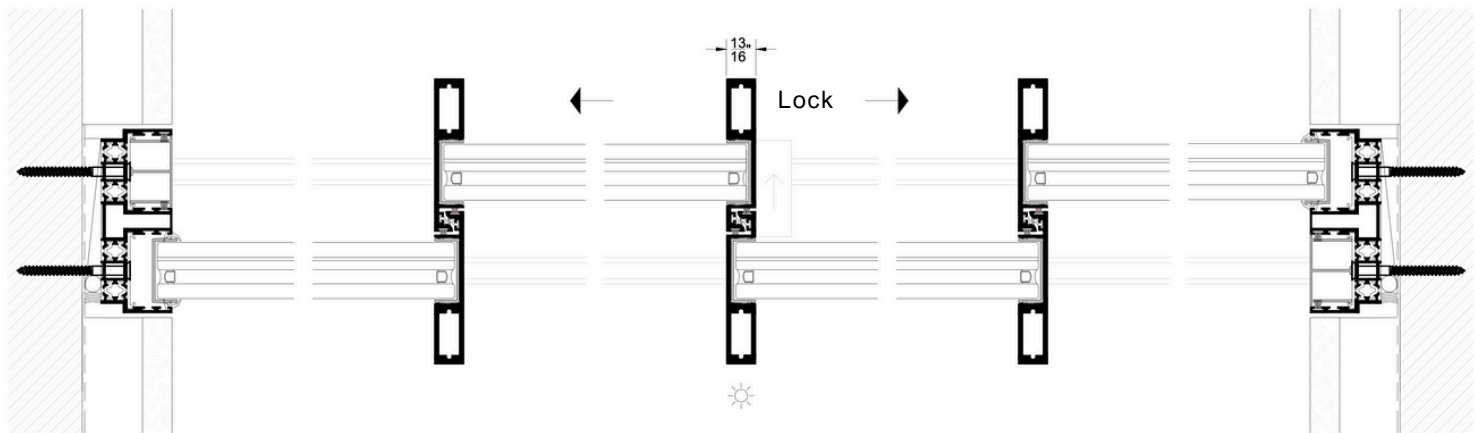
PERFORMANCE DATA (+ 65 / - 65 PSF)

DESIGN PRESSURE RATING	+ 65 / - 65 PSF
INTERLOCK SIGHTLINE	1 1/4"
STRUCTURAL OVERLOAD TESTING	+ / - 105 PSF
WATER PENETRATION RESISTANCE	10.65 PSF
AAMA PERFORMANCE CLASS	CW - PG70
TESTING APPLICATION STANDARDS	TAS 201/202/203
ADDITIONAL TESTING METHODS	ASTM E283/E330/E331/E987/E2608/F842
FLORIDA APPROVAL NUMBERS	41586
APPROVED FOR USE IN HVHZ	YES
APPROVED FOR USE OUTSIDE HVHZ	YES
IMPACT RESISTANT	YES
MISSILE LEVEL	D
WIND ZONE	ZONE 4 & HVHZ
LARGE MISSILE IMPACT RATING	YES
SMALL MISSILE IMPACT RATING	YES
NFRC TESTED AND CERTIFIED	YES

20MM FRAME (+ 70 / - 70 PSF)



10' max. net-frame height | 42 s.f. max. panel area



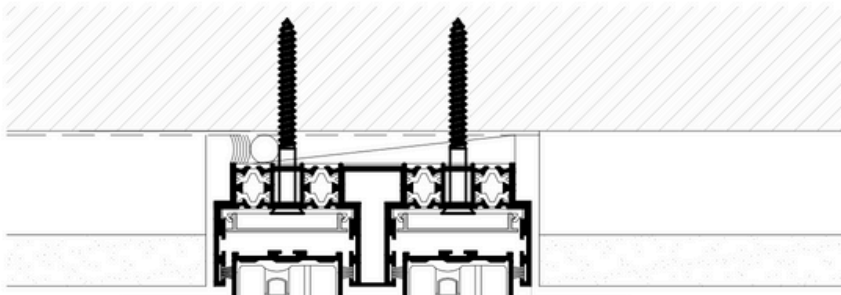
Up to 6 panels | Up to 6 tracks | 250 s.f. max. frame area

PERFORMANCE DATA (+ 70 / - 70 PSF)

DESIGN PRESSURE RATING	+ 70 / - 70 PSF
INTERLOCK SIGHTLINE	3/4"
STRUCTURAL OVERLOAD TESTING	+ / - 105 PSF
WATER PENETRATION RESISTANCE	10.65 PSF
AAMA PERFORMANCE CLASS	LC - PG70
TESTING APPLICATION STANDARDS	TAS 201/202/203
ADDITIONAL TESTING METHODS	ASTM E283/E330/E331/E987/E2608/F842
FLORIDA APPROVAL NUMBERS	41586
APPROVED FOR USE IN HVHZ	YES
APPROVED FOR USE OUTSIDE HVHZ	YES
IMPACT RESISTANT	YES
MISSILE LEVEL	D
WIND ZONE	ZONE 4 & HVHZ
LARGE MISSILE IMPACT RATING	YES
SMALL MISSILE IMPACT RATING	YES
NFRC TESTED AND CERTIFIED	YES







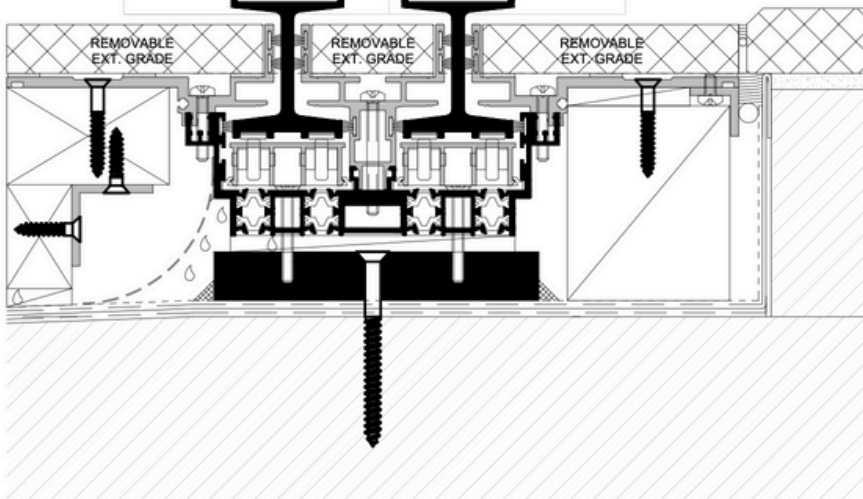
Glass Options:

38 mm | Double glass

Automation

Hidden track system

Exclusive invisible lock
& more customizations



QUALIFIED CONFIGURATIONS

TRACK QUANTITIES	Unlimited
MAX. PANEL WITH 20MM INTERLOCK	42 sq. ft. (120" max. net-frame height)
MAX. PANEL WITH 30MM INTERLOCK	75 sq. ft. (149-1/8" max. net-frame height)
NET-FRAME WIDTH (RIGHT SIDE)	8'-4 1/4" (100 1/4")
MAX. QTY. OF PANELS	12 panels at 75 sq. ft. per panel
FIXED FACADES	Yes
SLIDING DOORS WITH FIXED PANELS	Yes
SLIDING DOORS WITH ALL SLIDERS	Yes
CENTER- OPENING CONFIGURATION	Yes

CONFIGURATIONS AND SIZES

TEST SPECIMEN 1 (i7564)	XXXO, 2-Track (200-1/4" x 120")
TEST SPECIMEN 2 (l6439)	XXXXXOOO, 3-Track (584-5/8" x 144")
TEST SPECIMEN 3 (p2491)	XXO, 2-Track (218-3/8" x 149-1/8")
LARGEST TESTED FRAME AREA	585 sq. ft.
MAXIMUM ALLOWABLE FRAME AREA	877 sq. ft. (150% tested size)
LARGEST TESTED PANEL (FINISH)	6' x 12'
MAXIMUM ALLOWABLE PANEL AREA	72 sq. ft. (finish) / 75 sq. ft. (net-frame)

MATERIAL SPECIFICATIONS

FRAME PROFILES	6063-T5 / Polyamide 66 (25% Fiber)
INTERLOCK MULLIONS	6063-T5 / 304 Stainless Steel or C1018 Cold Rolled Steel
WEATHERSTRIPPING	Extruded Polypropylene with fin and without fin
GASKETS	PVC
APPROVED SEALANTS	Dow 121, 795, & 995
BEARINGS	304 Stainless Steel
GLASS OPTION 1	1-1/2" Overall = 1/4" Tempered + 11/16" Spacer + 1/4" Heat-Strengthened (H.S.) + 0.090" PVB + 1/4" H.S
GLASS OPTION 2	1-1/2" Overall = 1/4" Tempered + 11/16" Spacer + 1/4" Heat-Strengthened (H.S.) + 0.090" SGP + 1/4" H.S. 1-1/2"
GLASS OPTION 3	Overall = 3/8" Tempered + 7/16" Spacer + 1/4" Heat-Strengthened (H.S.) + 0.090" SGP + 3/8" H.S.

AVAILABLE OPTIONS

CENTER-OPENING MULLION	Reverse Interlock - Tested
INTEGRATED TRENCH DRAIN	Tested
SILL SUB-FRAME PROFILES	Tested
VERTICAL MEYER LOCK (3 POINT)	Tested
HORIZONTAL MEYER LOCK (3 POINT)	Tested
INVISIBLE LOCK + ANTI-LOCK OUT	Tested
MOTORIZATION	Testing not required
ELECTRO-MAGNETIC PIN-LOCK	Testing not required
FINISH OPTIONS	Class 1 Anodized, Standard Powder Coating, AAMA 2604 Powder Coating, and AAMA 2605 Powder Coating









SALES@TITONIWINDOWS.COM | WWW.TITONIWINDOWS.COM