



**TITONI**

WINDOW SYSTEMS

**F40 FRAMELESS**

A NEW ERA FOR  
HURRICANE FENESTRATIONS



**FIXED WINDOW WALLS  
AT MASSIVE SIZES**



# TITONI F40

The TITONI F40 is an innovative fixed window wall system engineered for monumental openings while maintaining the slimmest sightlines. Designed with only the smallest silicone joints between panels, this system delivers uninterrupted views with a minimal architectural footprint. The stick-built construction allows for rapid customization, and the framework can be fully concealed within surrounding finishes for a clean, seamless aesthetic.

Architects gain complete design freedom with features such as all-glass corners, enabling striking visual effects even in the most demanding hurricane-rated zones, including Miami-Dade. Vertical mullions can be reduced to a silicone joint of just 3/8" or capped with any architectural material to complement the project's design vision.



## PERFORMANCE DATA

DESIGN PRESSURE RATING:	+ 65.0 / -60.1 psf for the maximum tested size (120 sq. ft.)   + 67.7 / -80.0 psf for smaller than tested sizes
STRUCTURAL OVERLOAD TESTING:	+ 97.5 / - 90.23 psf
AAMA PERFORMANCE CLASS:	LC-PG 60
PENETRATION RESISTANCE: TESTING	15 PSF
APPLICATION STANDARDS:	TAS 201/202/203 AND
ADDITIONAL TESTING METHODS:	ASTM E283/E330/E331/E987/E2608/F842

## TESTED DIMENSIONS

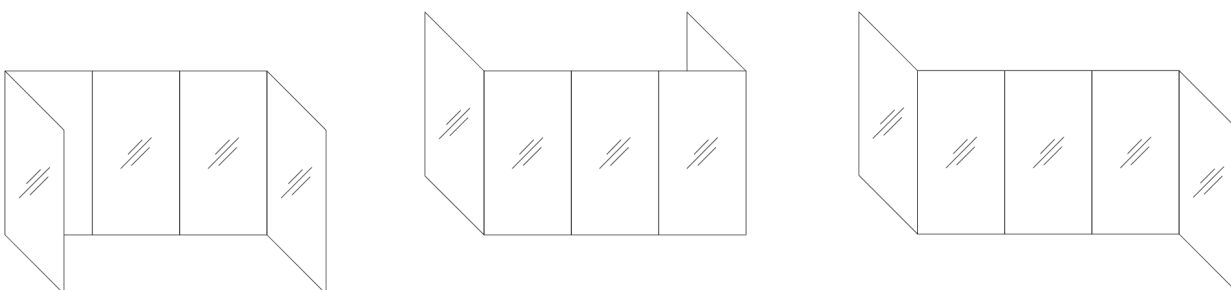
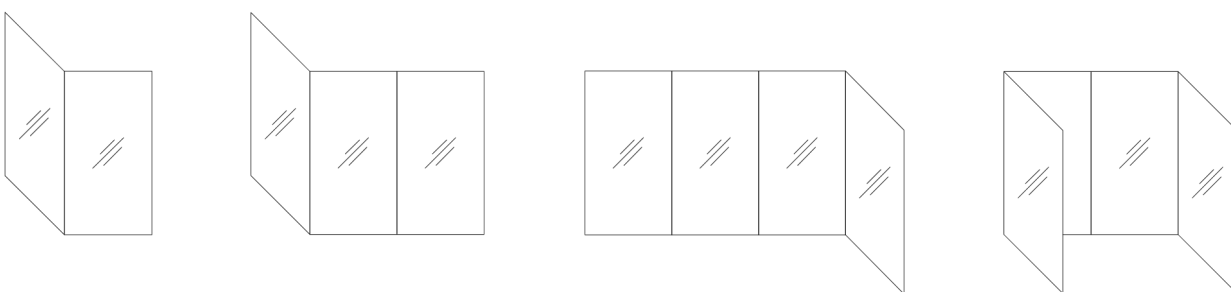
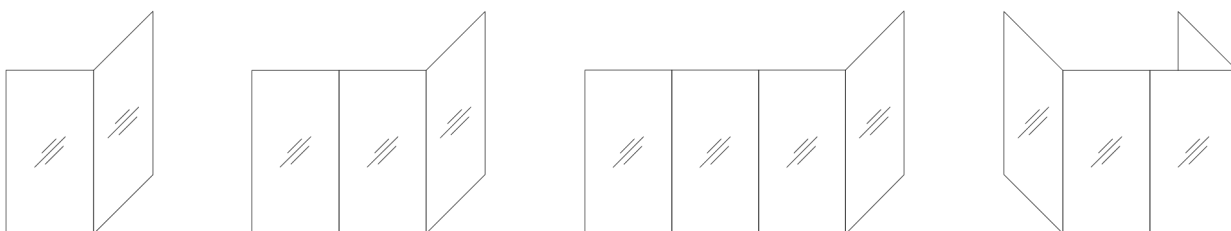
NET-FRAME WIDTH (LEFT SIDE):	24'-4" (292")
NET-FRAME WIDTH (RIGHT SIDE):	8'-4 1/4" (100 1/4")
NET-FRAME HEIGHT:	16' (192")
MAX. GLASS WIDTH @ MAX. HEIGHT:	8'-0 13/16" (96 13/16")
GLASS PANEL HEIGHT:	15'-9 1/2" (189-1/4")
FINISH (DLO) PANEL WIDTH:	8'-0" (96") ON-CENTER
FINISH (DLO) PANEL HEIGHT:	15'-7" (187")
MAXIMUM FINISH PANEL SIZE:	124.7 SQ. FT.

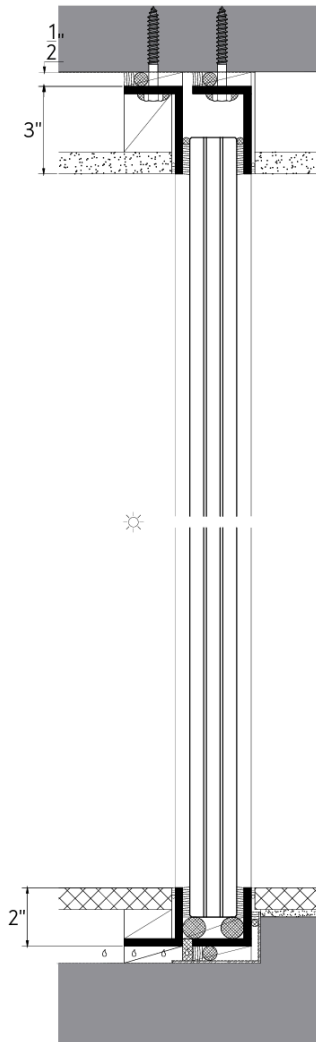
## MATERIAL SPECIFICATIONS

FRAME PROFILES:	6063-T52
APPROVED SEALANTS:	DOW 121, 790, 795, & 995
GLASS MAKEUP:	1-5/8" (40MM) OVERALL = 1/2" HEAT-STRENGTHENED (H.S.) + 0.090" SGP + 1/2" H.S.+ 0.090" SGP + 1/2" H.S.



# CONFIGURATIONS

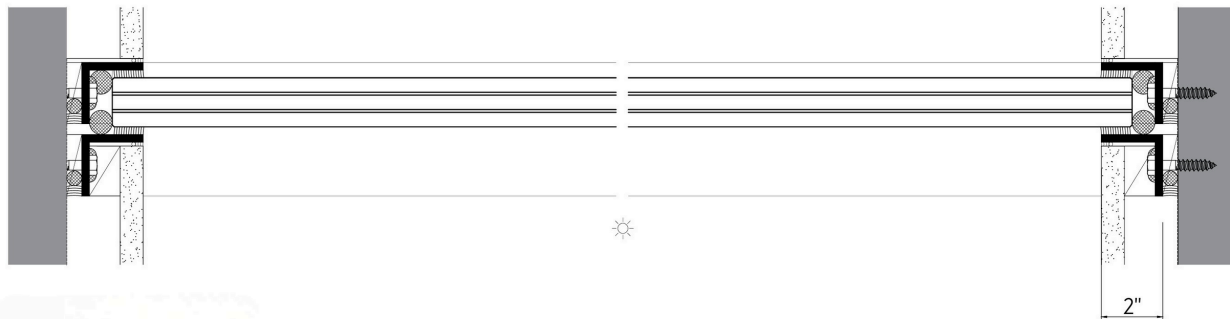
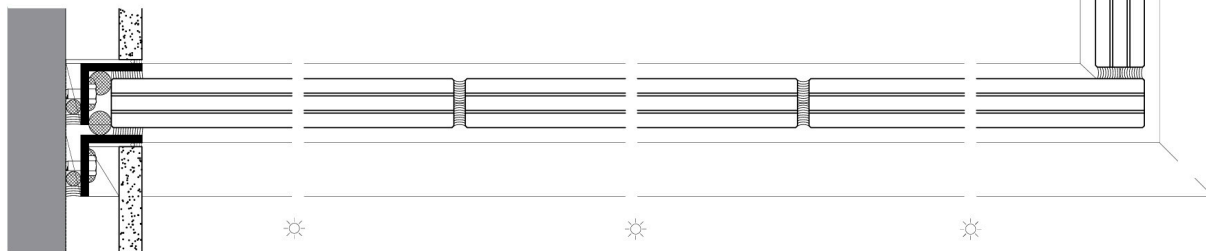
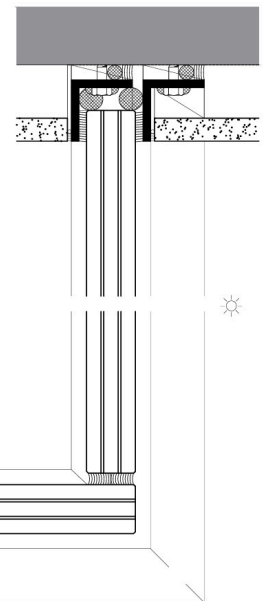




## MAX. PANEL SIZES

8'-0" w x 15'-7" h  
 8'-4" w x 15'-0" h  
 8'-11" w x 14'-0" h  
 9'-7" w x 13'-0" h  
 10'-5" w x 12'-0" h  
 10'-8" w x 11'-0" h  
 12'-5" w x 10'-0" h  
 13'-10" w x 9'-0" h  
 15'-7" w x 8'-0" h  
 17'-10" w x 7'-0" h  
 20'-9" w x 6'-0" h  
 24'-11" w x 5'-0" h  
 31'-2" w x 4'-0" h  
 31'-2" w x 4'-0" h  
 36'-6" w x 3'-0" h

\* Restricted by glass mnfr. max.



## PERFORMANCE OPTIONS:

DP ±65 | HVHZ Approval | Sizes up to 8' × 16' (unlimited overall widths and corners) | Vertical Mullions: 3/8" silicone joints | Water Pressure: 12 PSF.

## GLASS TYPE:

Triple pane laminated.

## FEATURES:

All-glass corners.

Customizable mullion capping.

Concealed framework.

