

GRID DISPLAY



□ GRID □



GRID

The GRID. All you need.

Welcome to GRID. Created by Peter J. Lassen as a cube with unprecedented organisational flexibility. Private or public, artistic or commercial.

GRID is the best choice in many contexts. It's the epitome of simplicity and flexibility and offers you endless variations - for your shop, museum, exhibition, special launch or event. A GRID is more than meets the eye. It's what you want it to be. Enjoy GRID."

GRID

What can GRID do for you?

As an interior system GRID offers endless opportunities. Used as a wall system, display, podium, room divider, frame, seating or to present your latest creation in the most flattering fashion?

You can create whatever you need, with one GRID - or hundreds. Open or closed. Black or white. GRID challenges your creative thinking, and first and last impressions of the system are equally elegant. Just like Peter J. Lassen wanted them to be. Welcome to a world of flexible solutions. Welcome to GRID.



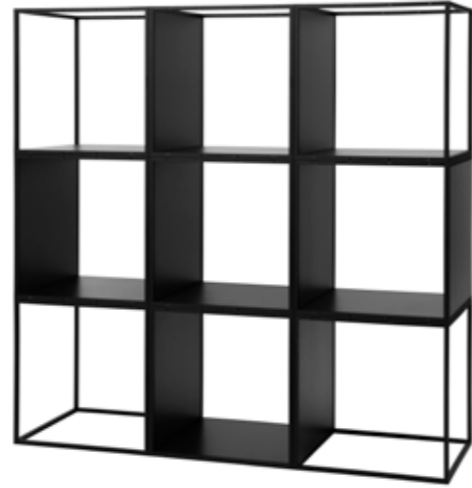


GRID



GRID

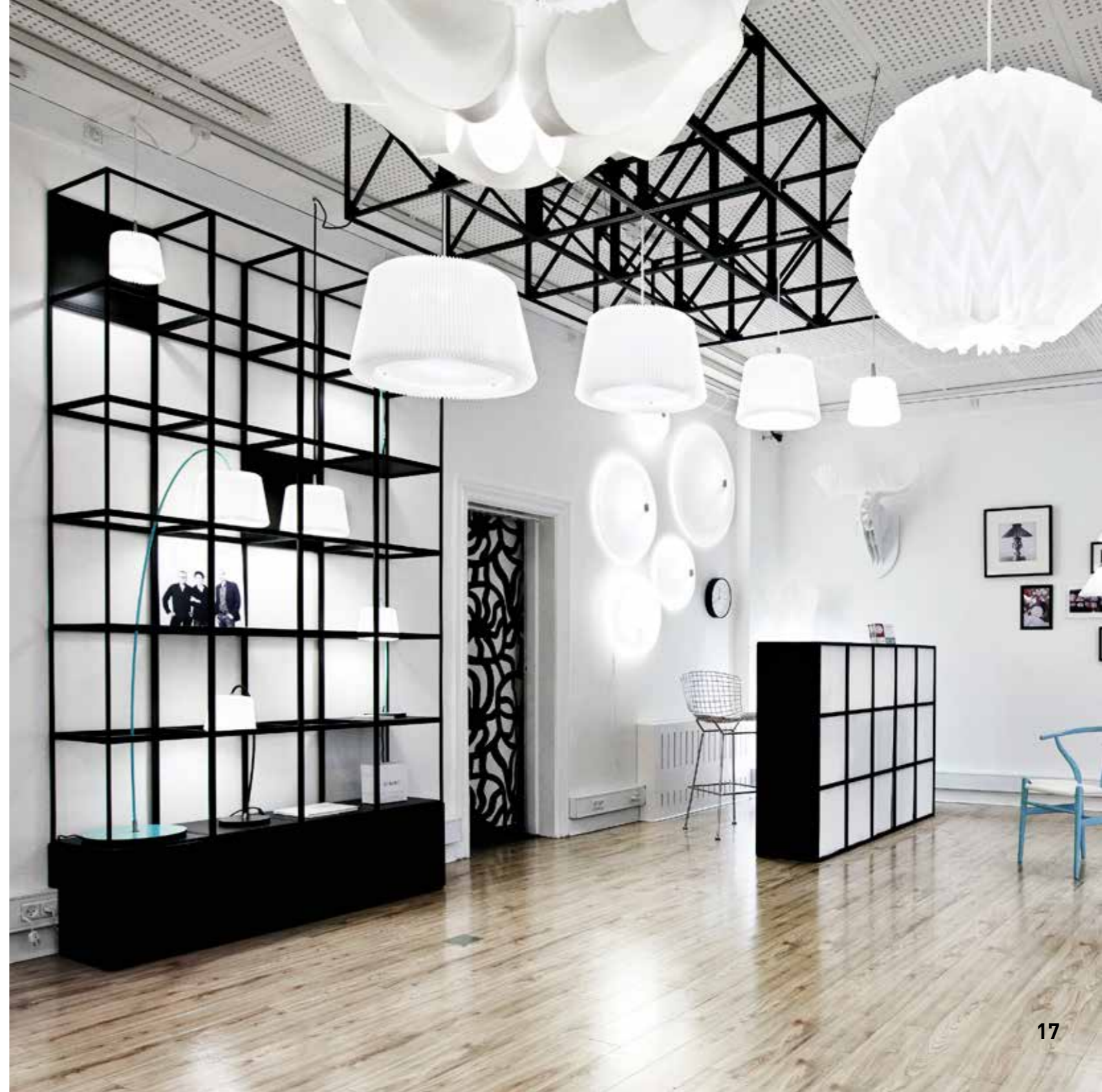








GRID



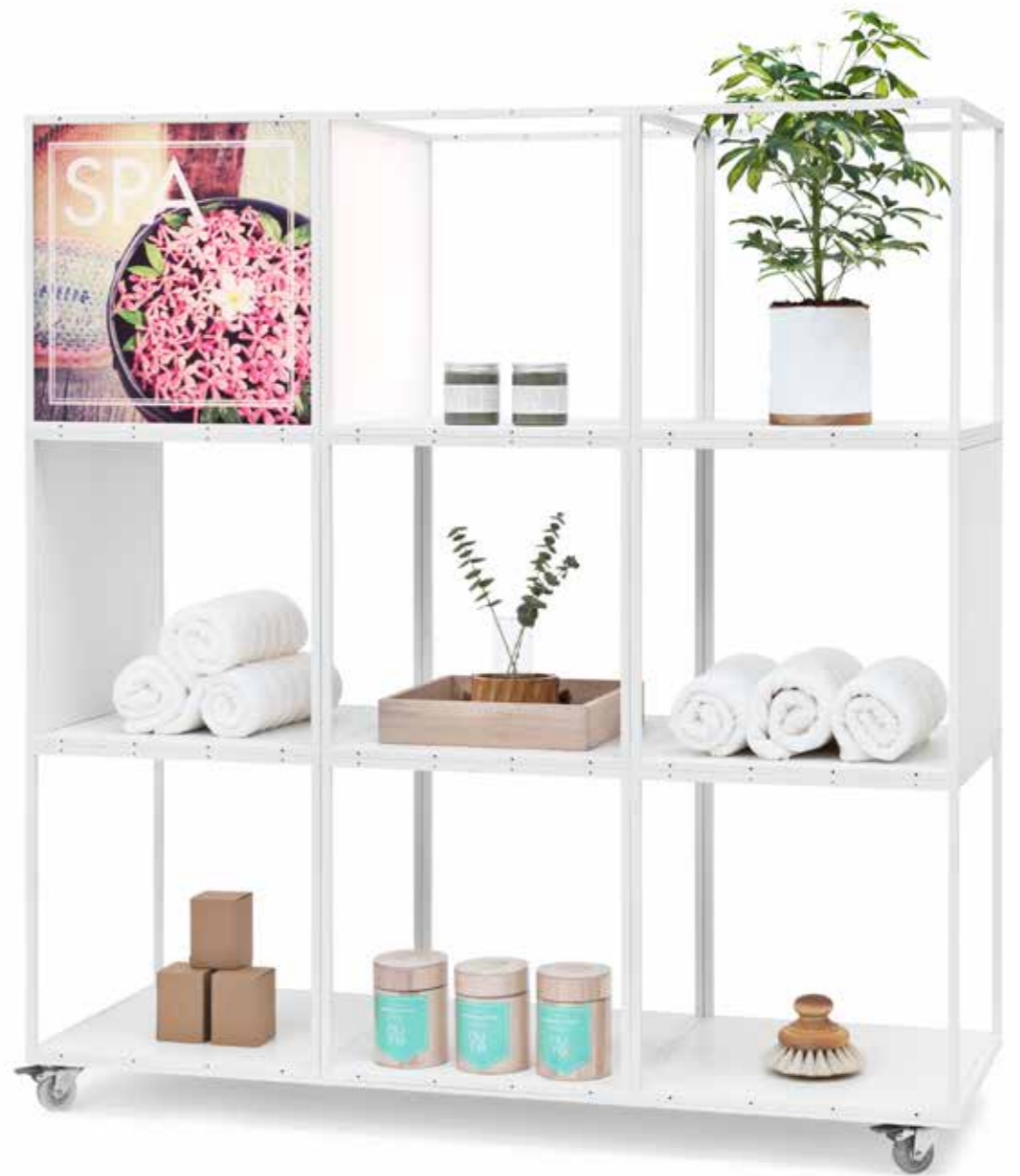






GRID



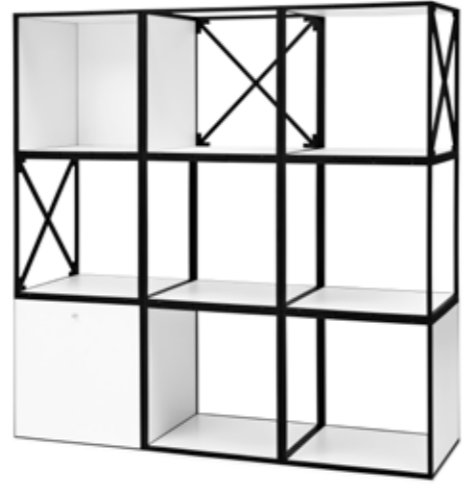










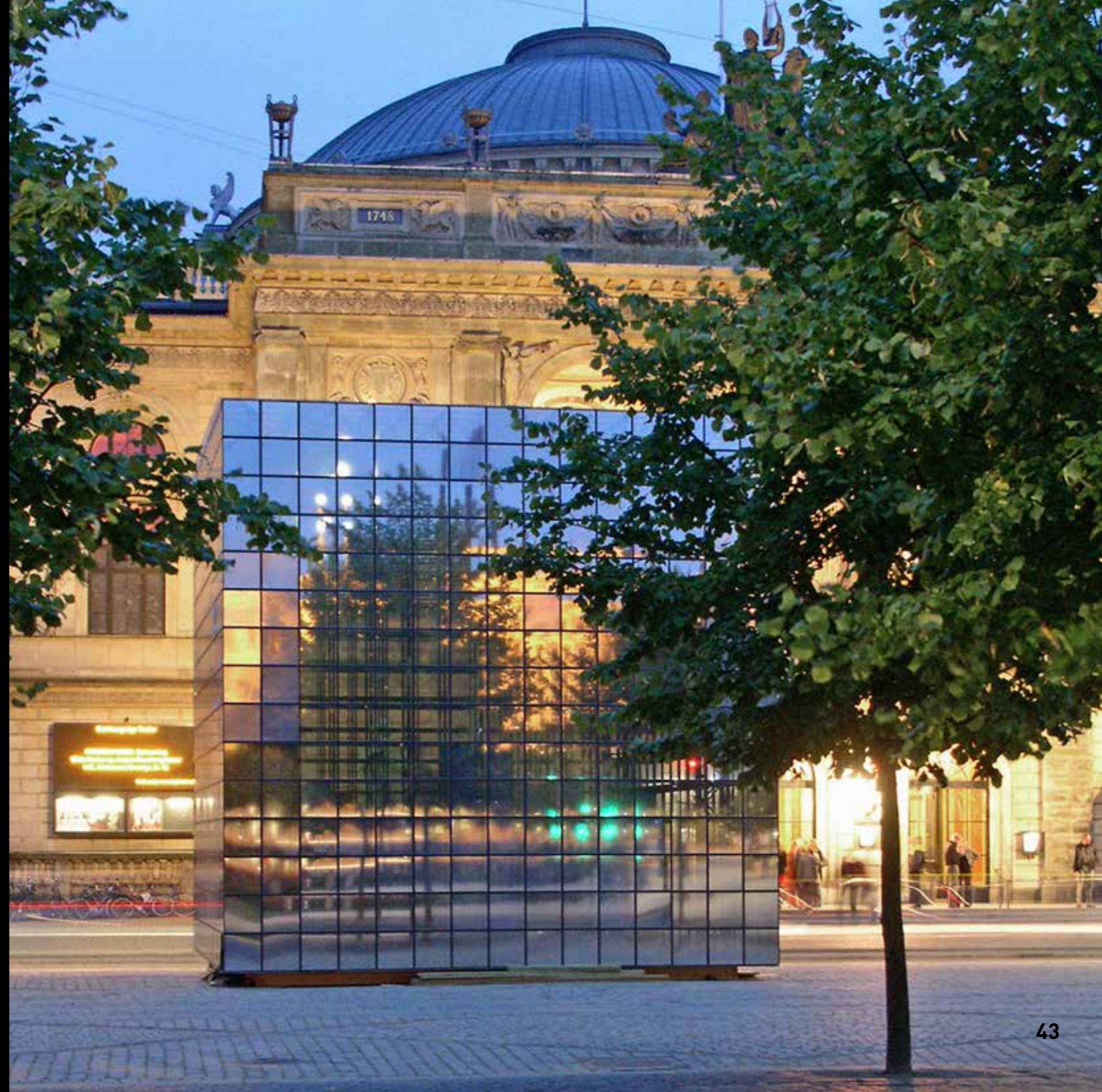


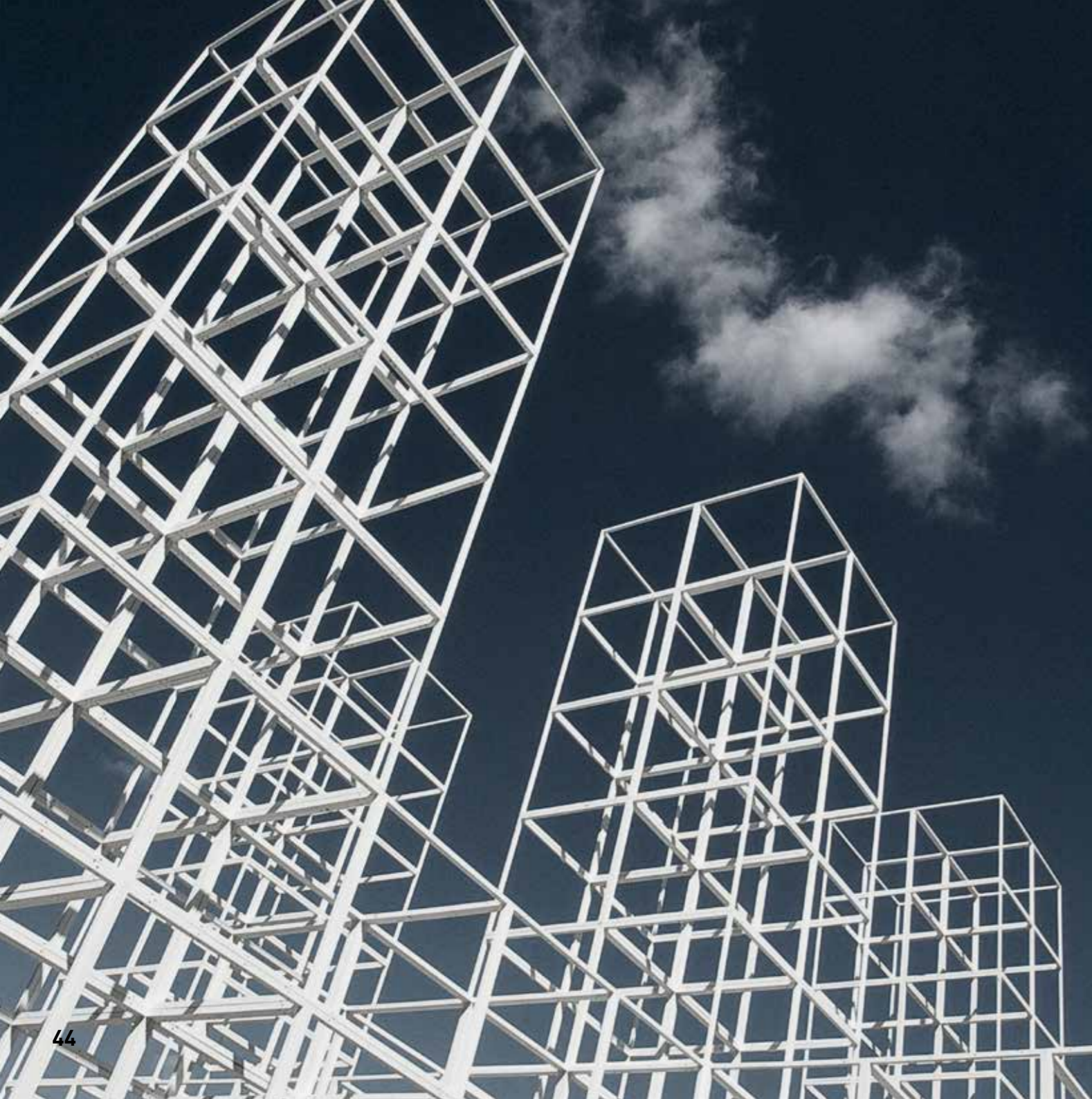


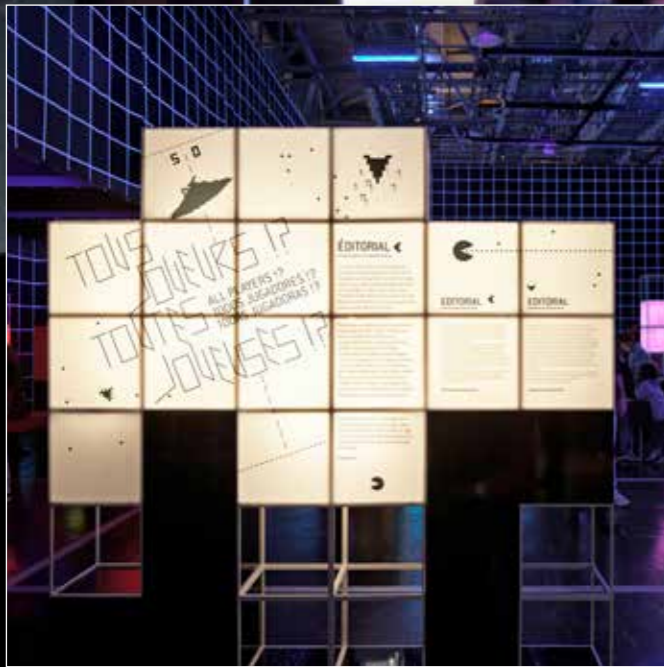
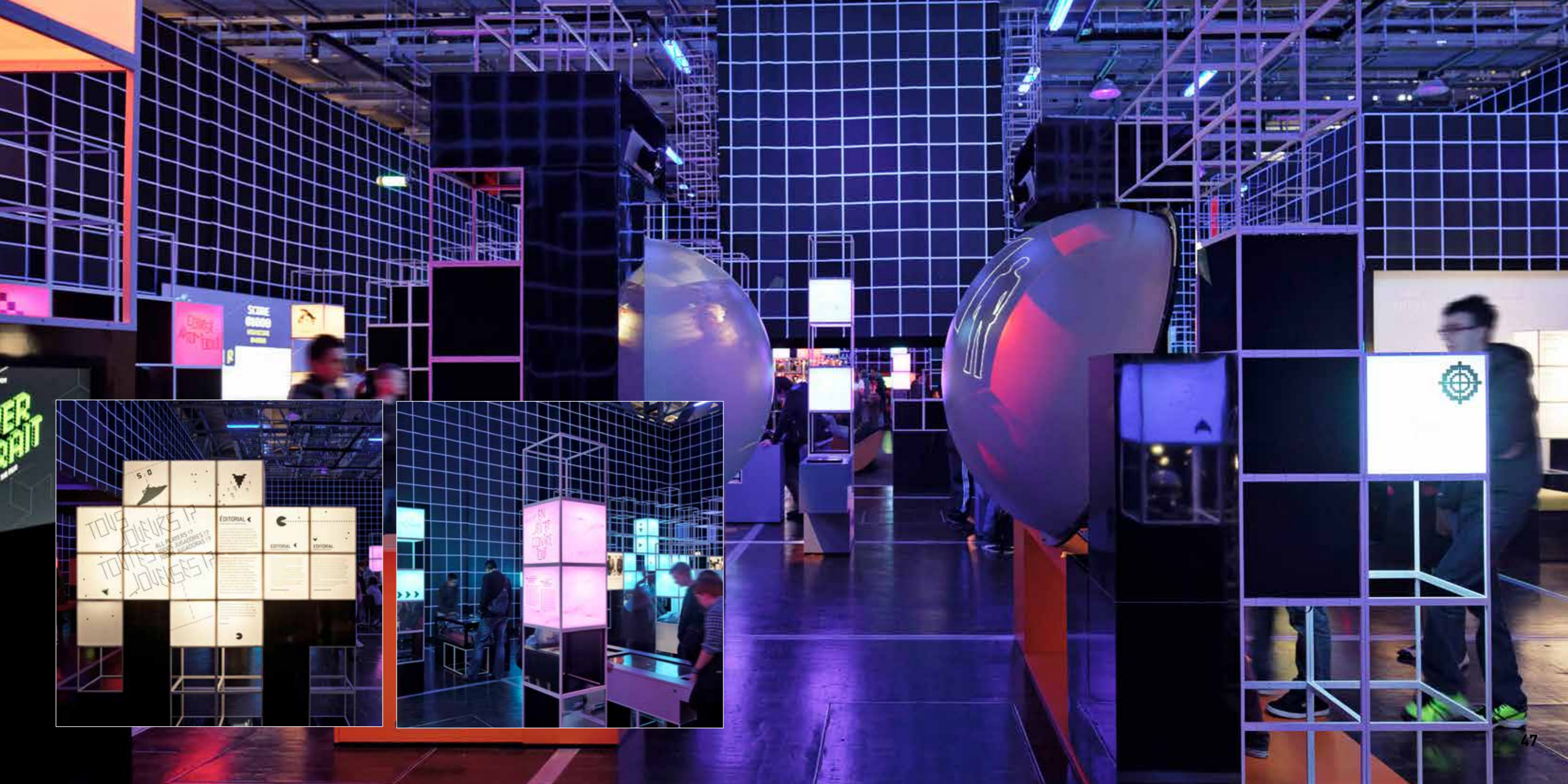


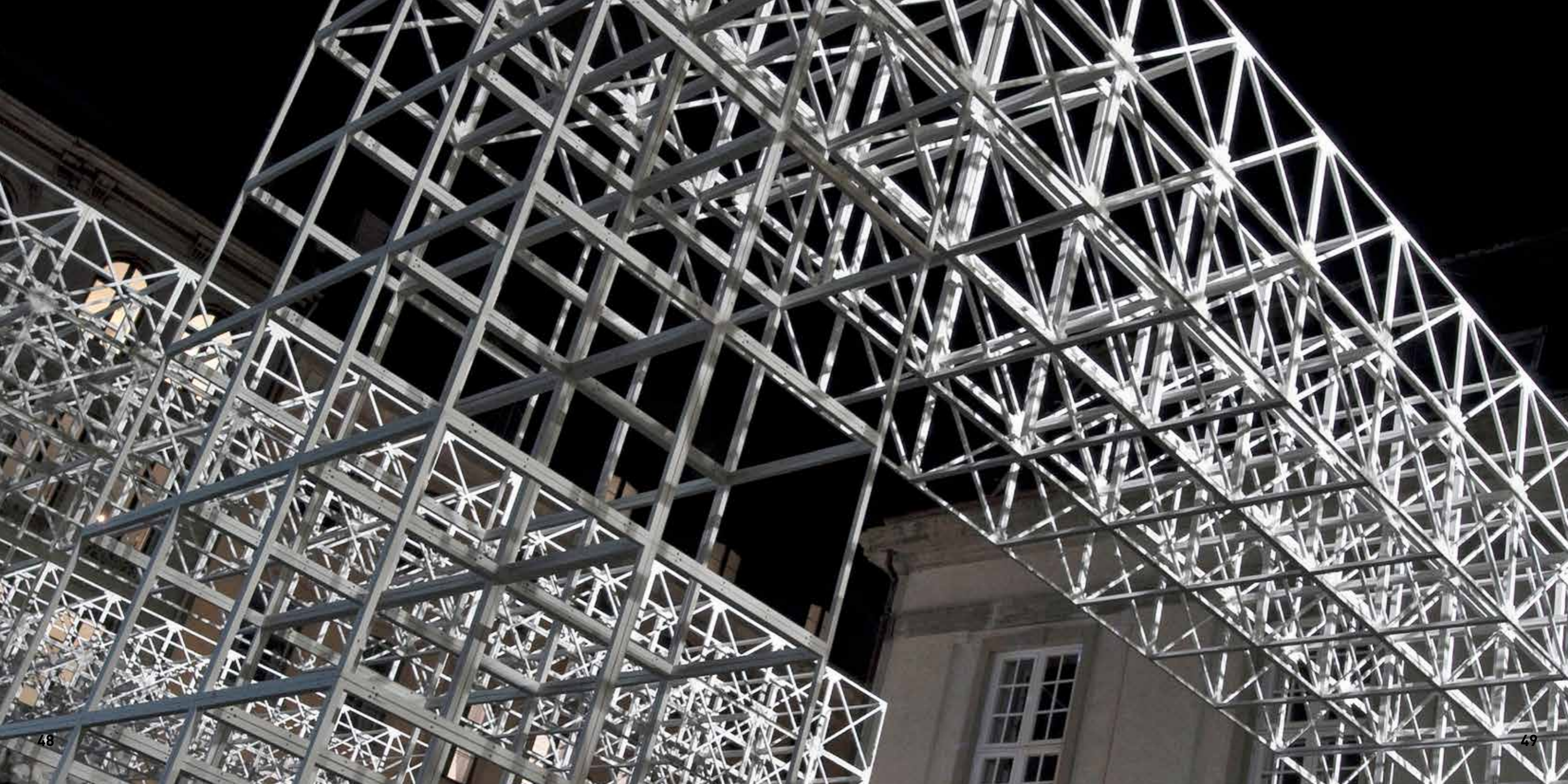


GRID











GRID

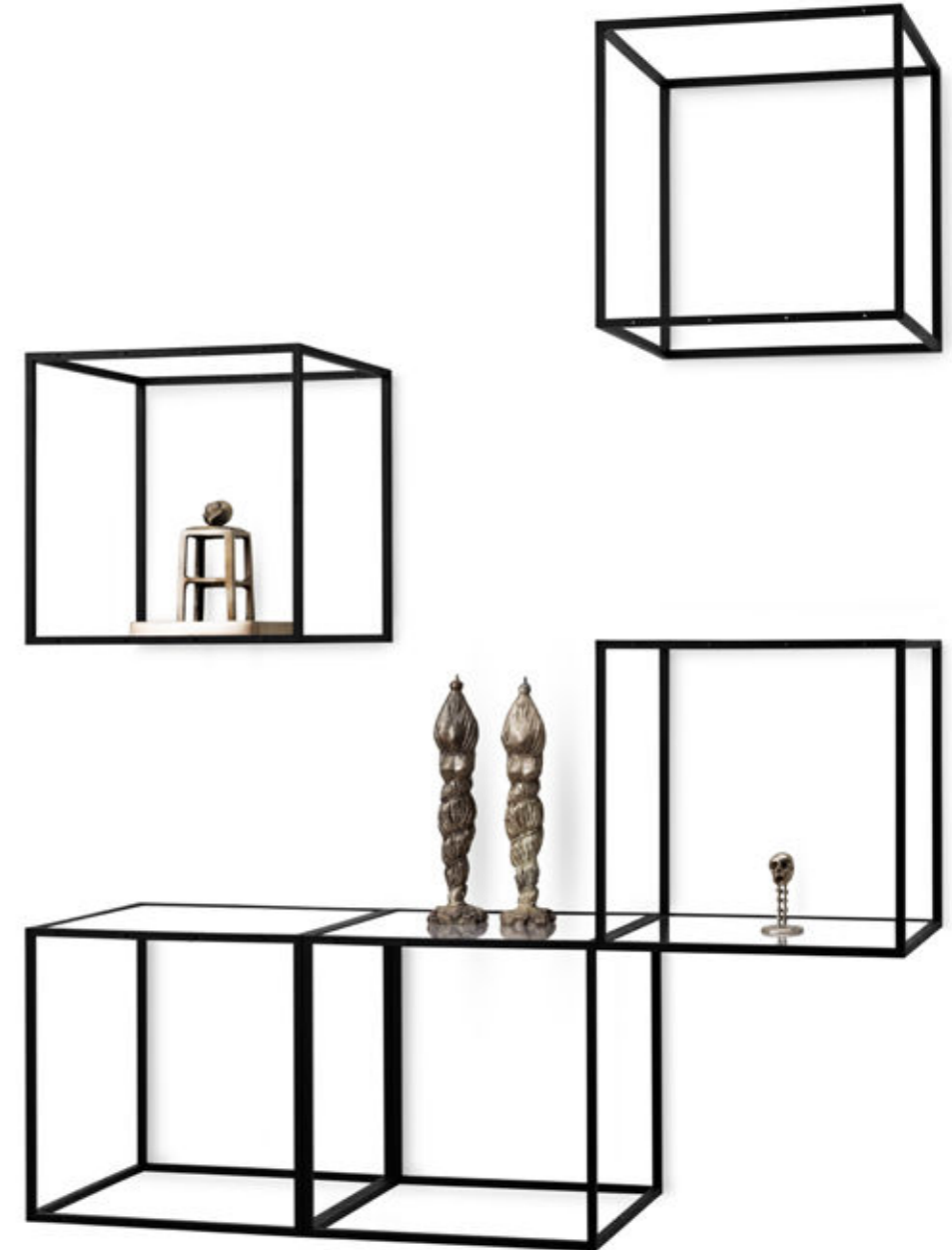
40 x 40 x 40 is all you need to know

A single GRID cube measures 40 x 40 x 40 cm. That's all that counts and matters.

The frame is 12 mm nylon (PA6) with fiberglass and comes in black and white with mounting holes - one of GRID's characteristic details. Thanks to these holes, GRID is versatile and easy to work with.

The GRID system offers shelves, solid sides, transparent acrylic sides, glass, mirrors, doors and drawers as well as upholstered seats and poufs. All this makes GRID a uniquely durable, flexible and practical solution for any space.

GRID is Danish Design - made in Denmark by selected suppliers and with the environment in mind. All units are recyclable and can be melted down and remade with little environmental impact.



Locations: Page 6-8 Lakrids by Johan Bülow, Airport Store, Copenhagen DK | Page 12 Inspiration, Store, Hillerød DK (photo: Per Bix) | Page 14 Natures Collection, Exhibition Stand, Copenhagen DK | Page 16 Magasin, Department Store, Aarhus DK | Page 17 Le Klint, Flagship Store, Copenhagen DK (photo: Martin Sølyst, Interior Design: Tine Mouritsen) | Page 20 Rundetårn, "New Africa" Exhibition, Copenhagen DK | Page 20 Medical Centre, Reception Area, Odense DK | Page 22 The National Museum of Denmark, "sharjah" Exhibition, Copenhagen DK | Page 22 Danish Architecture Centre, Exhibition Area, Copenhagen DK | Page 23 Kunsthaus Hamburg, "The Room Project" Exhibition, Hamburg D (photo: Lars Norman) | Page 24 Bang & Olufsen, Product Launch, Munich D | Page 26 Danish Design Centre, "Flowmarket" Exhibition, New York USA | Page 28 Designmuseum Denmark, "The Poster collection", Copenhagen DK | Page 29 Illums Bolighus, Decoration, Copenhagen DK | Page 30 Pressalit, Exhibition Stand, Frankfurt D | Page 32 Litoral, Fashion Store, Copenhagen DK | Page 34 OZ, Fashion Store, Copenhagen DK | Page 38 HEART Museum of Contemporary Art, Museum Store, Herning DK | Page 40 House of Bols, Museum Store, Amsterdam NL | Page 40 ARKEN Museum of Modern Art, Museum Store, Copenhagen DK | Page 43 INDEX Design Award, Event, Copenhagen DK | Page 44 Nordhavn, Event, Copenhagen DK | Page 45 Kongens Nytorv, Event, Copenhagen DK | Page 46-47 Cité des Sciences et de l'Industrie, "Jeu Video" Exhibition, Paris F (photo: Vincent Fillon) | Page 48-49 Culture Night, Event, Copenhagen DK

Special thanks to: Broste Copenhagen | Chokolade Compagniet | Davines | Emmerys | Estate Coffee | LOB Agency | Louise Roe | Maki | Marco Evaristti | New Balance | Taschen | Tommy Hilfiger. Photography: Egon Gade. Graphic design: Lere Arevad Gade. Styling: Laura Scheuer Trøstrup & Gitte Christensen, Reform Living. Text: missword

GRID System ApS

Smedevangen 2
DK-3540 Lyngø
Denmark

T +45 7262 6575
grid@gridsystem.dk
gridsystem.dk