



HDN

BY LIFTUP

lifting people



HDN website

HDN – HIDDEN IN THE FLOOR

Introducing the HDN, an innovative lift from Liftup designed specifically for wheelchair users. This lift combines elegant aesthetics with robust construction, offering full adaptability to its surroundings. When not in active use, the HDN lift discreetly conceals itself in the floor, seamlessly aligning with the existing floor, creating a visually pleasing and clutter-free environment.

Renowned for its ingenuity and modern design, the HDN lift effortlessly combines form, function, and elegance in a single stroke. Consequently, it holds immense appeal, particularly for entrance areas featuring 1 or 2 steps, such as shops and office premises.

Thanks to the HDN, wheelchair users can be accommodated without compromising on layout or style, even in space-constrained settings. Notably, no redecoration is required to accommodate the lift, as it effortlessly adapts to the room's existing aesthetics. The HDN can be seamlessly and elegantly integrated into any design, discreetly blending into its surroundings.

**More than a technology you need
– it's a technology you *want*.**

Made in Denmark





NEW NORDIC

All the way through

Nordic Design

Refers to the design traditions and aesthetics of the Nordic countries of Denmark, Finland, Iceland, Norway, and Sweden. It is characterized by a focus on minimalism, functionality, and simplicity, often with a natural or muted colour palette. Materials such as wood, glass, and metal are often used, and the design often incorporates natural elements. Nordic design is known for being clean, modern, and visually appealing. It is often associated with the concept of “hygge” which refers to a sense of coziness and comfort.

Nordic Quality

Similar to our other products, HDN is meticulously crafted from durable and stable materials, ensuring longevity and reliability. The versatility of HDN’s design options allows for personalized adaptation to its surroundings, creating an exclusive yet approachable style that seamlessly integrates into a wide range of indoor and outdoor settings. With HDN, you have the flexibility to infuse your space with a touch of sophistication, making it a perfect fit for most buildings and environments.

HDN Case

Office

Renovated office landscape with access for all

In the heart of Herning, a town in Jutland, Denmark, stands an appealing historic structure built in 1965. Currently, this building serves as the headquarters for a prestigious engineering and consulting firm. While the building's original 1960s red brick exterior still retains its character, significant transformations have taken place. The structure has undergone extensive modernization to enhance sustainability and accessibility, aligning it with contemporary standards and ensuring its continued relevance.





In 2018, the building underwent a significant renovation, driven by the goal of ensuring long-term viability and sustainability. Today, as you step through the main entrance, you'll encounter an accessibility solution seamlessly integrated by Liftup. In fact, it's so discreetly designed that you might not notice it at all. The HDN lifting platform is ingeniously concealed within the floor, expertly camouflaged with tiles that perfectly blend with the surrounding flooring, preserving the building's aesthetics and functionality in perfect harmony.

- 1 The same tiles as the rest of the floor
- 2 Safety panels all around
- 3 Remote control
- 4 Concealed when not in use
- 5 Roll-off protection

“It’s great that everyone can enter the office, without worrying about accessibility.”

Comfort and Safety

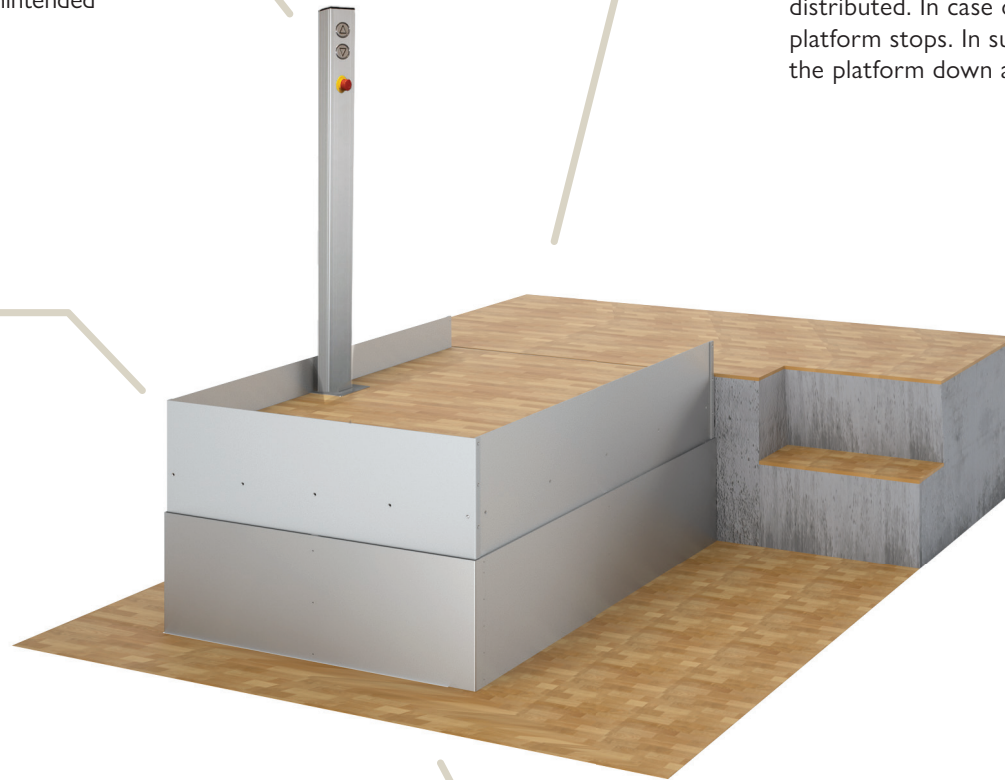
Emergency stop on the platform: activate the emergency stop and the platform stops an unintended movement.

Overload protection: the weight on the platform must be evenly distributed. In case of overload the platform stops. In such a case, move the platform down and exit it.

Safety panels: 10-cm safety panels prevent the wheelchair on all 3 open sides from rolling off when lifting/lowering the platform.

Silent drive: as the lifting mechanism and motor are located under the lift, there is only minimal operating noise.

The closed system minimizes the risk of being hit by moving parts.





UNIQUE BENEFITS

- Concealed when lowered
- Robust design despite the simplicity of the lift
- Simple and easy operation for all
- The machinery is completely shielded under the lift
- Safety panels around the platform prevent rolling off
- Virtually silent during operation
- Requires less space than a ramp for small level differences
- Indoor or outdoor installation

H DN Case

Private home

Elevated aesthetics for everyday life

Open your home and bring people together with HDN. This solution provides full accessibility to all levels for the whole family, and the discreet installation maintains the open spaces of a modern home. The inclusivity that HDN brings into a room promotes the sense of independence and freedom that everyone needs to feel at home.

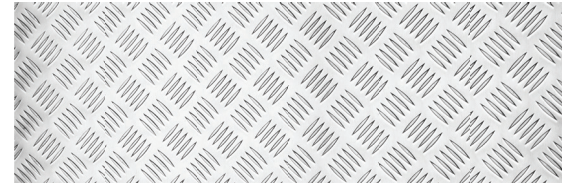
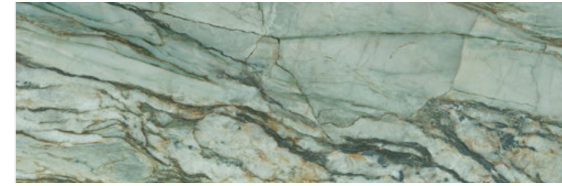
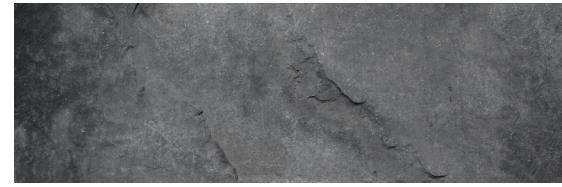
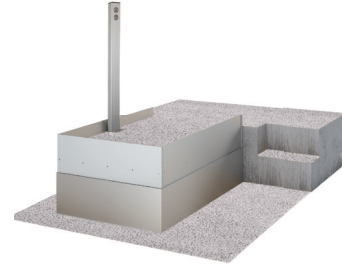
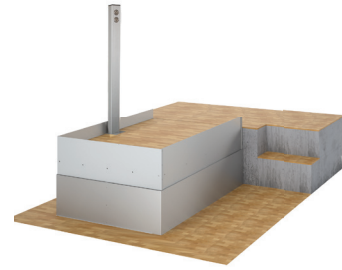




The name 'HDN', which stands for 'HIDDEN,' is fitting when you consider it. The lift is thoughtfully concealed beneath tiles matching the entire floor, achieving a seamless integration within the interior. Furthermore, the inclusion of safety panels on the sides of the HDN lift has proven to be immensely valuable, especially with small children in the household. They serve as a safety feature, significantly reducing the risk of accidents such as getting stuck or pinched in or by the lift.

- 1 Wireless call station mounted on the wall
- 2 Safety panels all around
- 3 Matching floorboards
- 4 Invisible when not in use
- 5 Roll-off protection

Enjoy a home free from major obstacles, allowing everyone to navigate their everyday lives with ease and confidence.

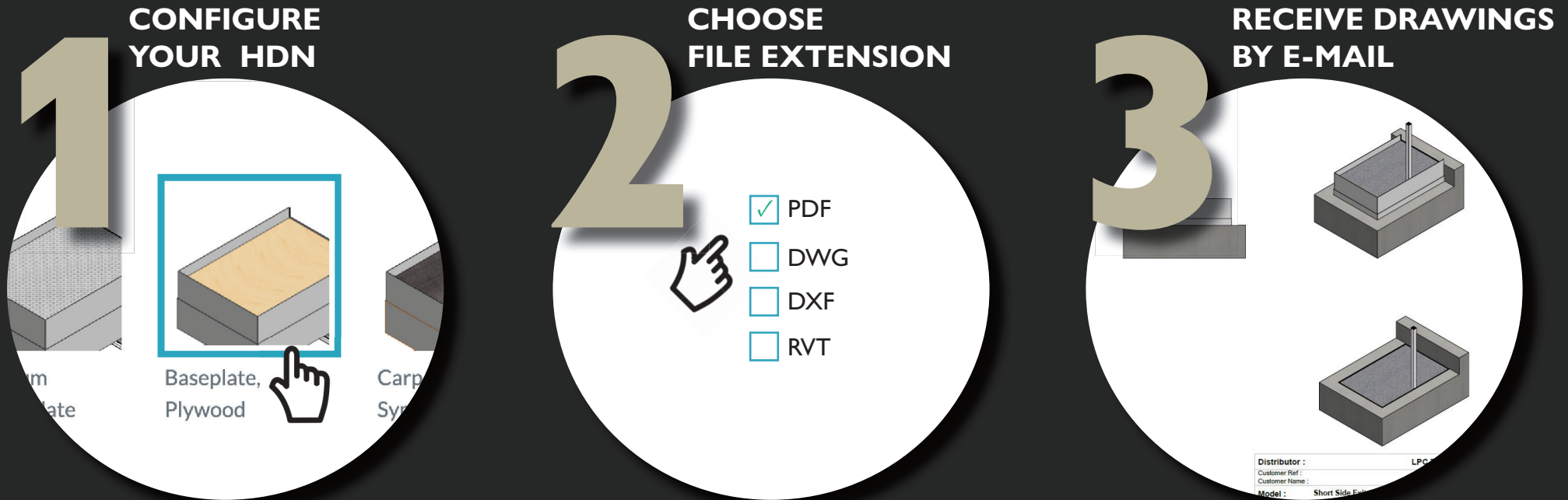


A wide range of possibilities

- For the perfectly integrated look, fit your own matching floorboards on the platform. (Standard: non-skid linoleum, aluminium checker plate, baseplate plywood, carpet with wheelchair symbol, baseplate, aluminium 6 mm (prepared for tiles) or no flooring.)
- One-way or two-way (external) call stations – wired/wireless – for wall mounting or free-standing column.
- The mounted call stations can be installed either on the right-hand side, the left-hand side, or the opposite side of the approach. It's up to you.
- Choose between short-side exit or long-side exit models.
- Choose between indoor or outdoor models.
- Configure the lift with a safety door on the upper level for roll-off protection.
- New reversible doors allow onsite choice of left- or right-hand-side opening.
- Choose the option of having one or more remote controls with you so that it is easy and convenient to call the lift.
- On/off key lock option to avoid accidents in e.g. public places.

LPC - 3 SIMPLE STEPS

LIFTUP PRODUCT CONFIGURATOR



Design your own HDN in Liftup's Product Configurator LPC and receive the drawing in PDF, dwg, dxf or rvt format by e-mail within a matter of seconds. On LPC there are three different levels:

- Guests
- Professionals
- Dealers

TRY LPC HERE



www.liftup.dk/lpc

Contact Liftup for advanced access.

H D N S P E C I F I C A T I O N S

Lifting capacity:	400 kg/2 pers.
Lifting speed:	20 mm/sec.
Lifting height:	0 - 500 mm
Platform sizes:	900/1000/1100 x 1400 mm
Noise:	< 70 dB
Weight:	110 kg
Duty cycle:	2 min. operation every 18 min.
Power supply:	230 V/50 Hz/min. 10 A
Approval:	CE marking 2006/42/EC (Machinery Directive)

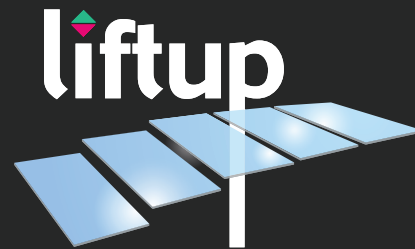
ISO certification

Liftup is ISO-certified according to the quality management standard ISO 9001. The certificate has been achieved by agreeing to continuously and periodically being evaluated by a third-party assessment body reviewing and auditing the organization to assure the quality processes are being followed. It is your assurance that we consistently deliver quality products and services that meet your needs and expectations, as well as the legal requirements applicable at all times.



lifting people

We want to change the way people think about access products: More than a technology you need – it's a technology you want. We design thoughtful, holistic and aesthetic access solutions where every element adds to improve the total user experience. We create unique tailor-made solutions where our products help people and are fully and beautifully integrated in the architectural environment. This means that our access solutions also have an emotionally uplifting and satisfying impact – because they are comfortable, user-friendly, and well-designed. This also means that we can transform access enablers from being tools that solves a task for the few – to being smart and pleasurable design elements for everyone to enjoy.



This leaflet is printed
on recycled paper

WWW.LIFTUP.DK/EN

Liftup A/S | Hagensvej 21 | DK-9530 Støvring | Denmark | +45 96 86 30 20 | mail@liftup.dk | www.liftup.dk | CVR DK-1015 3964