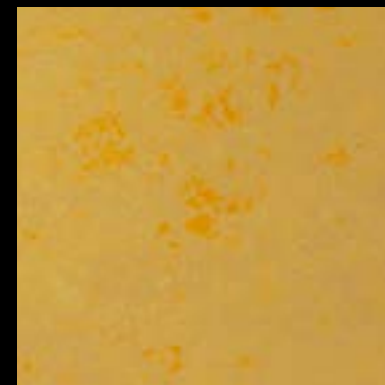
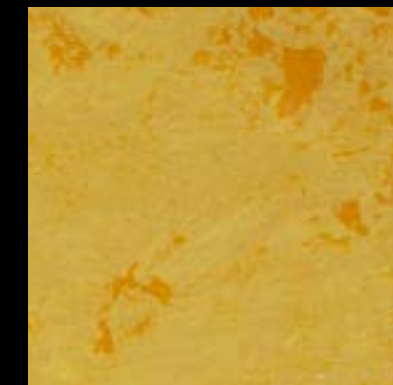


STETX®

CHROMATIC ACCENTS



AR30 - Citrus
Base SO, Additive 6



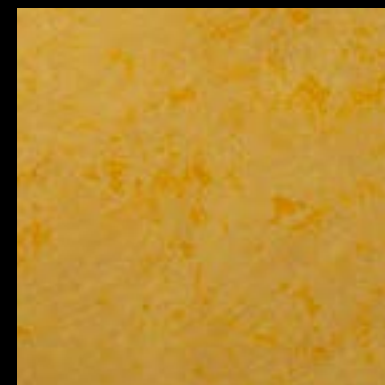
AR30 - Fresh
Base SO, Additive 4



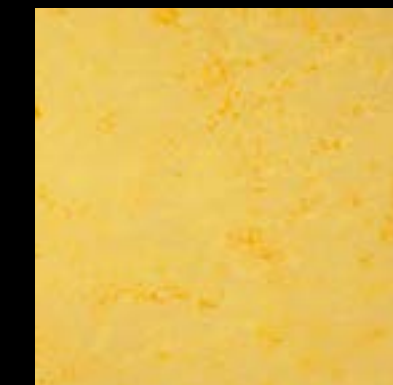
BR70 + GR31 - Classic
Base PR, Additive 6



BR70 + GR31 - Rusty
Base PR, Additive 4



AR30 - Dreamy
Base SO, Additive 8



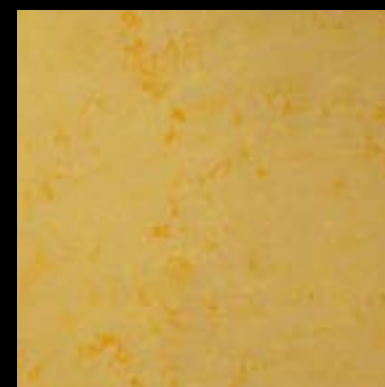
AR30 - Lime Ice
Base SO, Additive 1



BR70 + GR31 - Flame
Base PR, Additive 8



BR70 + GR31 - Volcanic
Base PR, Additive 2



AR30 - Sunrise
Base SO, Additive 2



AR30 - Island Sun
Base SO, Additive 7



BR70 + GR31 - Castle
Base PR, Additive 7



BR70 + GR31 - Melody
Base PR, Additive 1

EN

STETX®

Stetx® is a decorative paint with stunning chromatic light effects that change color and intensity depending on the angle of vision. The unique feature of this product is the presence of metallic powders activated by light as it filters into the rooms, causing the paint to vary its tone and create spectacular effects of shadow and light.

Technical Name
Multi chromatic effect.

Key Properties

- Unleaded
- Water-based
- Washable (after full curing)
- Non-flammable
- Heat resistant
- Odorless
- 7 attractive base colors (TW55, LU35, LI32, PI34, GR31, BR70 & AR30)
- 9 additives (1,2,3,4,5,6,7,8 & 24)
- Very low VOC content in compliance with:
 - EU directive 2004/42/EC
 - French decree no:2011-321

Pack Size

- 1 US Quart – (1 kg)
- 1 US Gallon – (2.5 kg)
- Additive 0.24 kg (for 1 Quart)
- Additive 0.6 kg (for 1 Gallon)

Recommended Uses

Internal Applications.

Type of Substrate

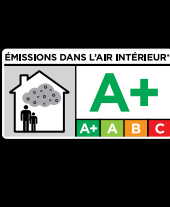
Plaster, embossed wall coverings, gypsum board, concrete, cement rendering, brick work.

Finish

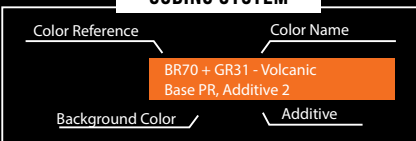
Chromatic Metallic Finish.

Coverage

Approximately 10 m2/kg/coat – 1 coat required.



CODING SYSTEM



CHROMATIC EFFECT

Drying Time
2 hours based on ASTM D 1640.

Thinner
No thinning required.

Preparation

All surfaces to be painted should be clean, dry and free from flaking material. Rub down and rinse. Allow fresh concrete to cure properly before application. Prime the substrate with the appropriate COLORTEK® CO.ACRYL (7 colors available BG, GY, LG, PR, SL, SO & WX).

Instructions

The shade is obtained by mixing one of the 9 COLORTEK® deco additives with the required Stetx® base (TW55, LU35, LI32, PI34, GR31, BR70 & AR30) using a paddle or a slow speed mixer until a complete dispersion is obtained. Apply Stetx® with a brush using cross-hatch strokes, create the effect by smoothing the surface with a plastic spatula 10 to 15 minutes later. Do not apply at temperatures below 5 °C.

Recommendation

To obtain the optimum Stetx® finish and bring out the special sparkle crystals in this product, proper lighting should be directed to the designated walls.

Cleaning

Remove as much leftover product as possible from the application equipment before cleaning. Clean equipment immediately after use with warm soapy water and rinse thoroughly. Do not empty product into drains or watercourses.

Additional Info

Product batches are subject to stringent quality control checks in conformity with ISO 9001:2008, Certificate CH12/1128.

Transportation & Storage

Care should be taken to avoid spillage. Store in a dry area. Protect from freezing. Extreme temperatures may cause paint to become unusable. For example: freezing and thawing may cause paint to gel, and high heat may cause solid skin to form.

FR

STETX®

Stetx® est une peinture décorative avec des effets de lumière chromatiques qui varient en fonction de l'angle de vision. La particularité de ce produit est la présence de poudres métalliques activées par la lumière lors de son filtrage dans les pièces, faisant varier la teinte de la peinture et créant des effets d'ombre et de lumière spectaculaires.

Nom Technique
Finition à effet chromatique.

Propriétés

- Ne contient pas de plomb
- Produit en base eau
- Lavable
- Résiste à la chaleur
- Inodore
- 7 bases (TW55, LU35, LI32, PI34, GR31, BR70 & AR30)
- 9 additifs (1,2,3,4,5,6,7,8 & 24)
- Faible teneur en COV conformément aux:
 - Directive EU directive 2004/42/EC
 - Décret Français No: 2011-321

Emballage

- 1 US Quart – (1 kg)
- 1 US Gallon – (2.5 kg)
- Additif 0.24 kg (pour 1 Quart)
- Additif 0.6 kg (pour 1 Gallon)

Usage Recommandé

Application en intérieur.

Type de Support

Enduit, ciment, plâtre et plaque de plâtre, anciennes peintures usuelles absorbantes, etc.

Finition

Finition métallique chromatique.

Rendement

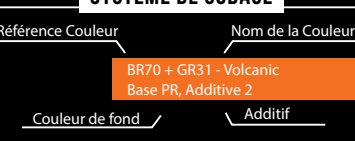
Environ 10 m2 / kg / couche - 1 couche requise.

Temps de Séchage

2 heures selon ASTM D 1640.



SYSTÈME DE CODAGE



EFFET CHROMATIQUE

Diluant
Aucune dilution requise.

Préparation du Support

Le support doit être dur, propre, sain, sec, cohésif et libre de toute matière telle que salpêtre, mousse, lichen ou autres microorganismes pouvant empêcher l'adhérence du produit sur le support. Dans un premier temps, appliquer la couleur appropriée de la sous-couche COLORTEK® CO.ACRYL disponible en 7 teintes (BG, GY, LG, PR, SL, SO et WX).

Application

Sélectionner l'effet désiré en mélangeant la base appropriée (TW55, LU35, LI32, PI34, GR31, BR70 & AR30) avec l'un des 9 additifs disponibles. Bien mélanger. Appliquer Stetx® à l'aide d'un spalter en effectuant des mouvements croisés de balayage en prenant soin d'alterner les mouvements afin d'obtenir une finition naturelle non régulière. Laisser reposer la surface 10 à 15 minutes avant de lisser la surface à l'aide d'une spatule en plastique pour obtenir l'effet final. Ne pas appliquer à une température ambiante inférieure à 5 °C ou par temps pluvieux.

Recommandation

Il est recommandé d'installer un système d'illumination approprié afin de mettre en valeur les cristaux et l'effet précieux de Stetx®.

Nettoyage des Outils

Éliminer autant que possible le reste du produit de la surface des outils. Nettoyer ces derniers en les frottant vigoureusement avec de l'eau et du savon. Ne pas vider les restes du produit dans égouts ou les voies d'eau.

Information Additionnelle

Le processus de fabrication de Stetx® est soumis au plus strictes contrôles de qualité certifiés conformes au standard ISO 9001:2008, Certificat CH12/1128.

Transport et Séchage

Des précautions doivent être prises pour éviter les déversements. Stocker le produit à l'abri de l'humidité et des températures de gel. Des températures extrêmes peuvent rendre la peinture inutilisable. Par exemple, le gel et le dégel peuvent provoquer la gélification de la peinture et une chaleur intense peut entraîner la formation d'une peau solide.



www.colortek.eu
info@colortek.eu



Synergy, Added Value, Continuous Improvement,
Diversity, Integrity, Social Responsibility.

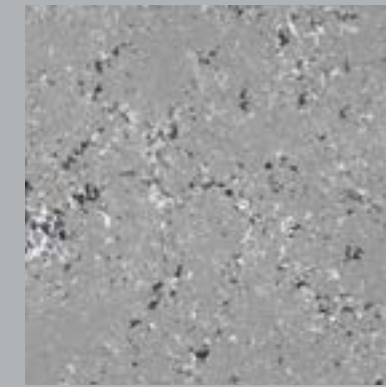




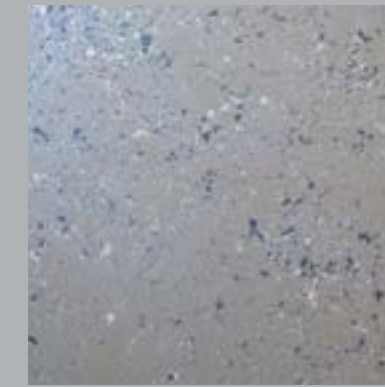
TW55 - White
Base WX, Additive 6



TW55 - Almond
Base WX, Additive 3



TW55 + LI32 - Smoke
Base GY, Additive 6



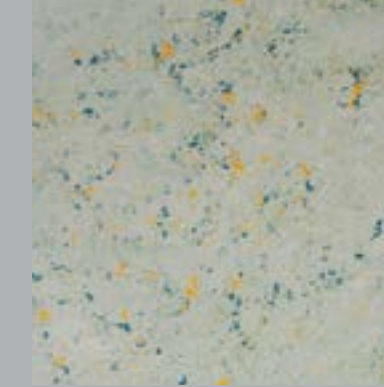
TW55 + LI32 - Bay
Base GY, Additive 3



LI32 - Granite
Base GY, Additive 24



TW55 + LI32 - Golden
Base GY, Additive 7



AR30 + PI34 - Willow
Base BG, Additive 6



AR30 + PI34 - Vibes
Base BG, Additive 3



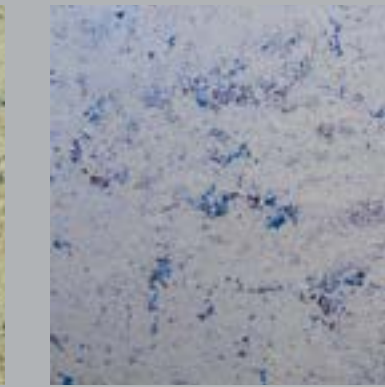
LU35 + LI32 - Wave
Base SL, Additive 6



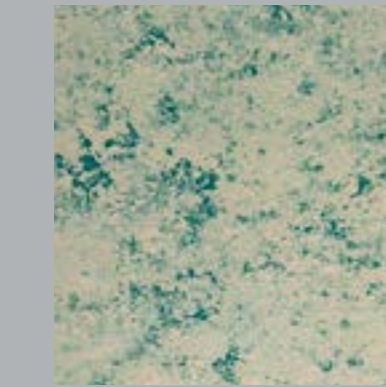
LI32 - Escape
Base GY, Additive 3



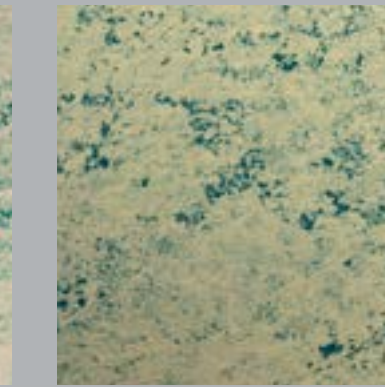
LU35 + LI32 - Velvet
Base SL, Additive 8



BR 70 + LI 32 - Oasis
Base LG, Additive 3



PI34 - Green Way
Base BG, Additive 24



PI34 - Cactus
Base BG, Additive 4



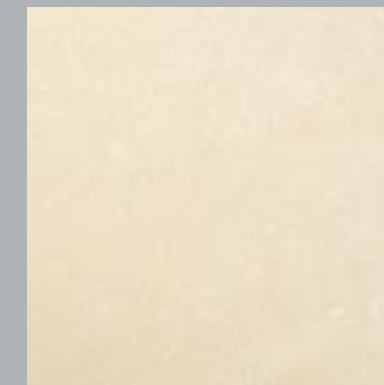
BR70 - Smoked
Base LG, Additive 6



BR70 + LI32 - Horizon
Base LG, Additive 8



TW55 - Cloud
Base WX, Additive 2



TW55 - Pearly
Base WX, Additive 4



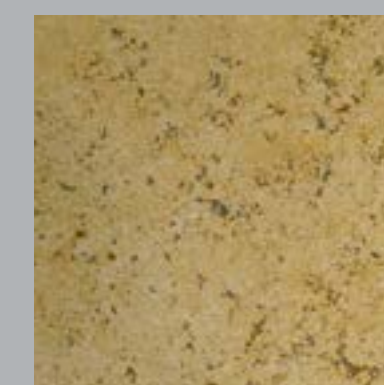
TW55 + LI32 - Infusion
Base GY, Additive 2



TW55 + LI32 - Lime
Base GY, Additive 4



LI32 - Autumn Fog
Base GY, Additive 1



BR70 + LI32 - Gold Tone
Base LG, Additive 7



AR30 + PI34 - Garden
Base BG, Additive 1



BR70 - Infinity
Base LG, Additive 4



LU35 + LI32 - Charm
Base SL, Additive 24



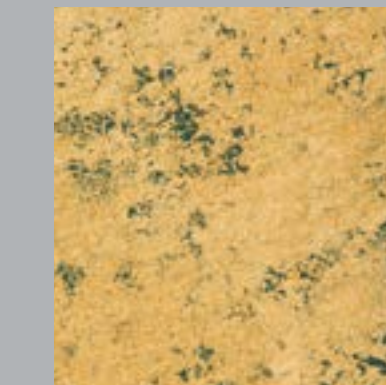
LI32 - Gravity
Base GY, Additive 6



LU35 + LI32 - Voyage
Base SL, Additive 1



LU35 + LI32 - Grassland
Base SL, Additive 7



PI34 - Gold Wish
Base BG, Additive 7



BR70 + LI32 - Backwoods
Base LG, Additive 4



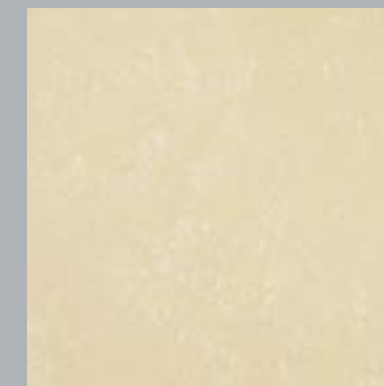
BR70 + LI32 - Hue
Base LG, Additive 2



BR70 - Marron
Base LG, Additive 2



TW55 - Mist
Base WX, Additive 8



TW55 - Candy
Base WX, Additive 5



TW55 + LI32 - Dust
Base GY, Additive 8



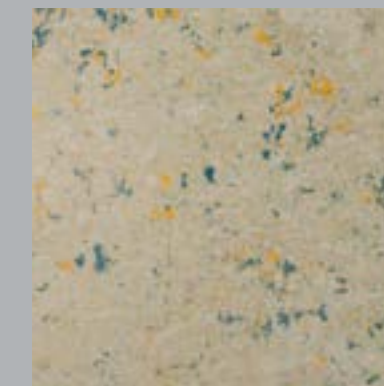
TW55 + LI32 - Magic
Base GY, Additive 5



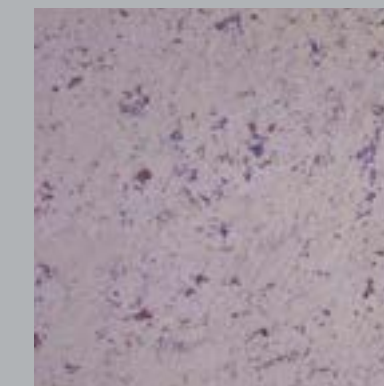
LI32 - Olive Gray
Base GY, Additive 2



LI32 - Fresh
Base GY, Additive 4



AR30 + PI34 - Valley
Base BG, Additive 8



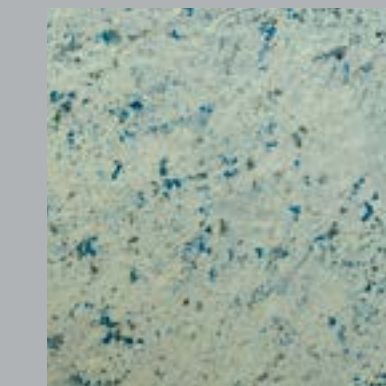
BR70 + LI32 - Gipsy
Base LG, Additive 5



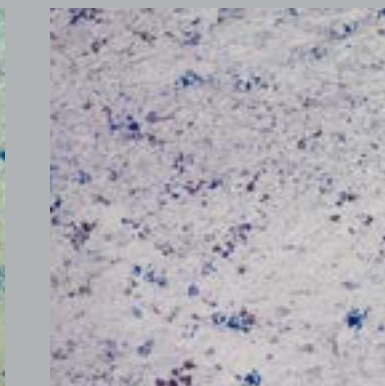
LI32 - Empire
Base GY, Additive 8



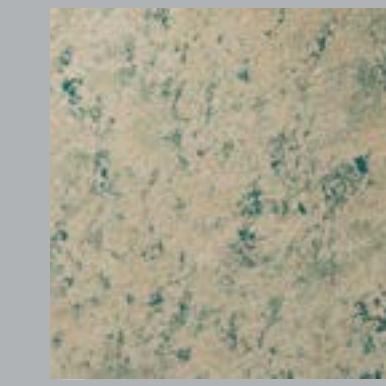
LU35 + LI32 - Crystal
Base SL, Additive 2



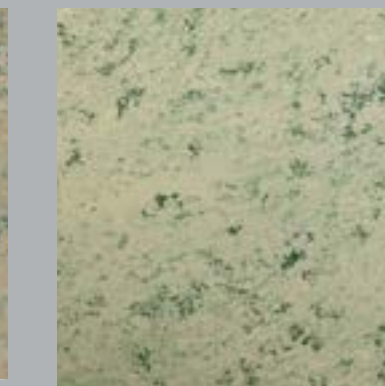
LU35 + LI32 - Treasure
Base SL, Additive 4



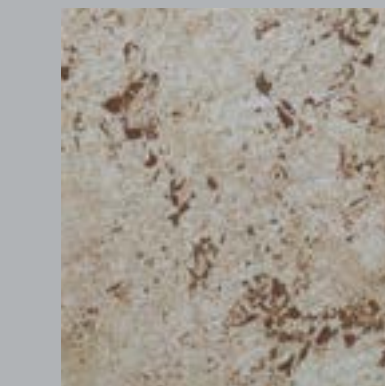
LU35 + LI32 - Fiesta
Base SL, Additive 5



PI34 - Spa Green
Base BG, Additive 8



PI34 - Green Vibe
Base BG, Additive 1



BR70 - Soil
Base LG, Additive 8



BR70 - Ancient
Base LG, Additive 7