

TWINK[®]
FAIRY DUST FINISH

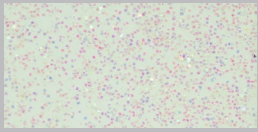


COLORTEK[®]

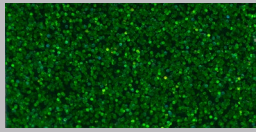
www.colortek.eu
info@colortek.eu

  [colortekpaints](https://www.instagram.com/colortekpaints)

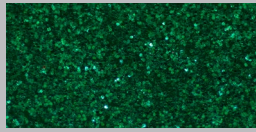




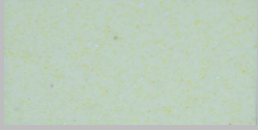
Crystal Clear – 00



Leaves – 27



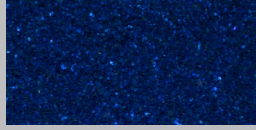
Spring Hill – 27



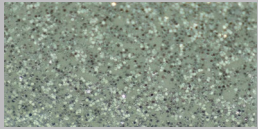
Fairy Dust – 00



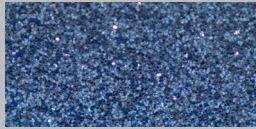
Blues – 68



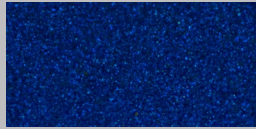
Reflections – 68



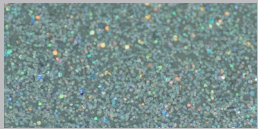
Silver Night – 54



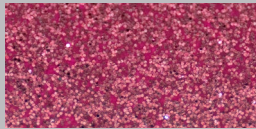
Steel Blue – 68



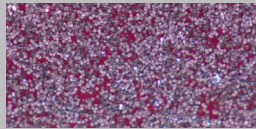
Water Town – 68



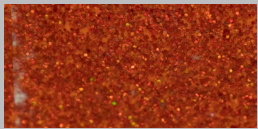
Sea Haze – 54



Rosaline – 66



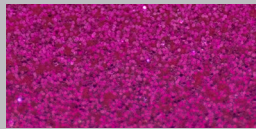
Royal Purple – 66



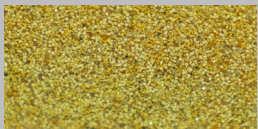
Sparkling Naranja – 80



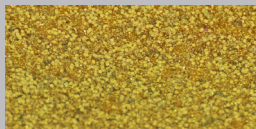
Shocking Magma – 72



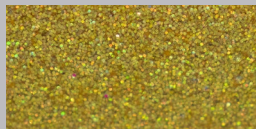
Secret Magenta – 66



Aurel – 17



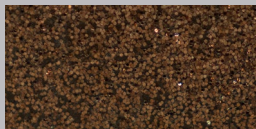
Orient Gold – 17



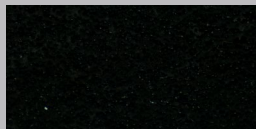
Lavorado – 17



Russero – 46



Russet – 96



Mystic Black – 10

EN

TWINK®

Twink is a water-based glitter paint that adds tons of sparkle to any project. Its glittery finish is perfect for applications on large surfaces, as well as craft and hobby painting techniques, including brush painting and detailing, sponging, stenciling, stamping etc.

Technical Name

Glitter Paint

Key Properties

- Water Based
- Odorless
- Many color combinations

Recommended Uses

Internal applications

Twink can only be applied in exterior when top coated with Oxibond 4005 flat, satin or gloss

Type of Substrate

Plaster, embossed wall coverings, gypsum board, and other properly primed substrates

Finish

Sparkling glittery finish

Coverage

Approximately 4-5 m²/kg/coat - 2 coats required

Drying Time

- Touch-dry in less than 1 hour
- Wait approximately 2 hours between paint coats
- Drying times vary with existing conditions

Thinner

No thinning required

Application by Roll

- Apply 1 coat of Colortek Fondo F Primer

- Apply 2 coats of Colortek CIA
- Apply 2 coats of Twink to get a rich saturated finish

Application by Spray

- Apply CIA onto the substrate (Fondo F primer is not required in this instance)
- Apply 2 coats of Twink to get a rich saturated finish

Protection

Water-based varnish 4005 can be applied as a top coat for added protection

Do not apply at temperatures below -5°C or when rain is expected

Preparation

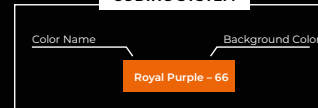
All surfaces to be painted should be clean, dry and free from loose & flaking material

For optimal results, the substrate should be primed with Colortek Fondo F tinted to a similar shade before application

Pack Size

- 1 US Quart - 0937 kg
- 1 US Gallon - 375 kg

CODING SYSTEM



Certificate LB18/234269