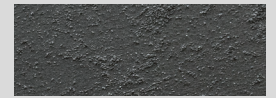
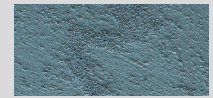
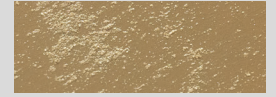






COLORTEK®

TECHNOLOGY IN ALL ITS COLORS

# FLO



[www.colortek.eu](http://www.colortek.eu)  
[info@colortek.eu](mailto:info@colortek.eu)

  [colortekpaints](#)

SHIMMERING  
SPARKLES



COLORTEK®

# FLOE®

EN

## SHIMMERING SPARKLES

Floe® is a textured paint effect with a crystalline finish that will transform your home in a reflection of large and unexplored spaces.

### Technical Name

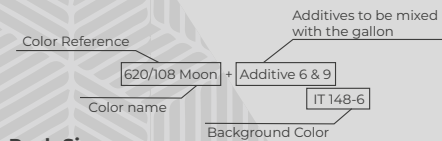
Textured metallic finish incorporating sparkles.

### Key Properties

- Unleaded
- Water based
- Washable (after full curing)
- Non flammable
- Odourless
- 9 attractive base colors (600, 610, 620, 630, 640, 650, 660, 670 or 680) and 5 additives (G6, G7, G8, G9, Metallo Bronze)
- Very low VOC content in compliance with:
  - EU directive 2010/79/EU
  - French decree No:2011-321



### Coding System



### Pack Size

- 1 US Quart - (1 kg)
- 1 US Gallon - (2.5 kg)
- Additive 0.6 kg and/or Metallo 0.85 kg (for 1 Gallon)
- Additive 0.24 kg (for 1 quart )

### Recommended Uses

Internal Applications.

### Type Of Substrate

Plaster, embossed wall coverings, gypsum board, concrete, cement rendering, brick work.

### Finishes

A sandy effect with illuminating sparkles.

### Coverage

- 7m<sup>2</sup>/kg/coat. requires 1 coat for 600-620-630
- 11m<sup>2</sup>/kg/coat. requires 2 coat for 680
- 4m<sup>2</sup>/kg/coat. requires 1 coat for 610-640-650-660-670

### Drying Time

15 minutes to 1 hour depending on temperature and humidity.

### Thinner

No thinning required.

## Preparation

All surfaces to be painted should be clean, dry and free from loose and flaking material. Rub down and rinse. prime the substrate with appropriate Colortek CoAcryl or CIA base (10 colors available: White, R10, R17, R27, R46, R65, R66, R68, R94 & R96).

## Instructions

The shades are obtained by mixing one of the additives with the required Floe® base. Stir well - Spread Floe® in small quantities using alternative brush strokes in all directions; shift the sparkle particles to achieve the desired final effect. A second coat could be applied and will result in a richer final effect.

**Do not apply at temperatures below 5°C or when rain is expected.**

## Recommendation

To obtain the optimum Floe® finish and bring out the special sparkly crystals in this product, proper lighting should be directed to the designated walls.

## Cleaning

Remove as much product as possible from application equipment before cleaning. Clean equipment immediately after use with warm soapy water and rinse thoroughly.

**Do not empty product into drains or water courses.**

## Additional Info

Product batches are tested using a quality control system and are ISO 9001:2008 certified.

## Transportation and Storage

- Care should be taken to avoid spillage
- Protect from frost and humidity

Floe® est une peinture à effets texturés de finition cristalline proposée dans une gamme de teintes chatoyantes et de couleurs fraîches qui fera vibrer en votre intérieur les grands espaces intacts.

## Propriétés

- Ne contient pas de plomb
- Produit en base d'eau
- Lavable
- Inodore
- 9 bases (600, 610, 620, 630, 640, 650, 660, 670, ou 680) et 5 additifs (G6, G7, G8, G9, Metallo Bronze)
- Faible teneur en COV conformément aux:
  - Directive EU directive 2010/79/EU
  - Décret Français No: 2011-321

## Emballage

- 1 US Quart - (1Kg)
- 1 US Gallon - (2.5 Kg)
- Additif 0.6 Kg et/ou Metallo 0.85 Kg (pour 1 Gallon)
- Additif 0.24 Kg (pour 1 Quart)

## Rendement

7m<sup>2</sup>/kg /couche. 1 couche pour 600-620-630.

11m<sup>2</sup>/Kg/couche. 2 couches pour 680.

4m<sup>2</sup>/Kg/ couche. 1 couche pour 610-640-650-660-670.

## Préparation du support

Le support doit être dur, propre, sain, sec, cohésif et libre de toute matière telle que salpêtre, mousse, lichen, ou autres microorganismes pouvant empêcher l'adhérence du produit sur le support. Dans un premier temps, appliquer la couleur appropriée de la sous-couche COLORTEK® CO.ACRYL ou CIA disponible en 10 teintes ( white, R10, R17, R27, R46, R65, R66, R68, R94 & R96).

## Application

Sélectionner l'effet désiré en mélangeant la base appropriée avec l'un des additifs disponibles. Bien mélanger - Appliquer Floe® à l'aide d'un spalter en effectuant des mouvements croisés de balayage en prenant soin d'alterner les mouvements afin d'obtenir une finition naturelle non régulière. Pour un effet plus riche, appliquer une seconde couche une fois la première ayant proprement séchée.

ES

Floe es un efecto de pintura texturizada con un acabado cristalino que transformará su hogar en un reflejo de espacios grandes e inexplorados al recrear a través de sus colores brillantes cálidos y fríos la atmosfera de los desiertos arenosos y las extensiones heladas y luminiscentes de la Antártida.

## Características Clave

- Sin plomo
- A base de agua
- Lavable (después de un curado completo)
- No inflamable

## Sin olor

9 colores base atractivos (600, 610, 620, 620, 640, 650, 660, 670 o 680) y 5 aditivos (G6, G7, G8, G9, Metallo Bronze)

## Muy bajo contenido de VOC

- Directiva de la UE 2010/79/EU

- Decreto francés No: 2011-321

## Tamaño del empaque

- 1 cuarto de Galón - (1kg)
- 1 galón - (2.5 kg)
- Aditivo 0.6kg y/o Metallo 0.85kg (para 1 galón)
- Aditivo 0.24kg (para 1 cuarto de galón)

## Rendimiento

- 7 m<sup>2</sup>/kg/capa – requiere 1 capa para las bases: 600-620-630.
- 11 m<sup>2</sup>/kg/capa – requiere 2 capa para la base: 680
- 4 m<sup>2</sup>/kg/capa – requiere 1 capa para las bases: 610-640-650-660-670.

## Preparación

Todas las superficies que serán pintadas deben estar limpias, secas y libres de cualquier material suelto o descascarado. Frote y enjuague. Imprima la superficie con la base Colortek apropiada de CoAcryl o CIA (10 colores disponibles: blanco, R10, R17, R27, R46, R65, R66, R68, R94 Y R96)

## Instrucciones

El color se obtiene al mezclar uno de los aditivos con la base requerida de Floe. Mezclar bien – Extender Floe en cantidades pequeñas moviendo la brocha de manera alternante en todas direcciones; desplace las partículas de brillo para obtener el resultado final deseado. Se debe aplicar una segunda capa lo cual dará un resultado final más rico.

## Mod de ambalare

- 1 US Quart - (1 kg)
- 1 US Gallon - (2.5 kg)

## Recomandat pentru:

Aplicarea pe perete in interior, acoperiri de perete in relief, plăci de gips-carton, beton, ciment, zidărie.

## Acoperire:

- 7m<sup>2</sup>/kg/strat. necesar 1 strat pentru 600-620-630
- 11m<sup>2</sup>/kg/strat. necesar 2 straturi 680
- 4m<sup>2</sup>/kg/strat. necesar 1 strat pentru 610-640-650-660-670

## Recomandat pentru:

Aplicarea pe perete in interior, acoperiri de perete in relief, plăci de gips-carton, beton, ciment, zidărie.

## Pregătirea Suprafetei

Toate suprafetele trebuie sa fie uscate, curate, fara praf, murdărie, rugina, pete, grasime, ulei, mucegai, ceara, sau alti contaminanti. Toate impuritatile trebuie eliminate prin slefuire, zgariere, sau orice alta metoda corespunzatoare. Toate gaurile, crapaturile sau alte imperfectiuni ale suprafetei trebuie reparate cu materiale de reparatii corespunzatoare. Suprafetele reparate trebuie mai apoi slefuite, curate de praf si ambosate corespunzator.

## Metoda de Aplicare

Se aplica 1 strat de vopsea lavabila baza de colorare, cat mai apropiata de culoarea Floe aleasa. Intindeti FLOE in cantitati mici utilizand miscari alternative cu pensula in toate directiile. Se poate aplica un al doilea strat de vopsea, imbogatind astfel efectul final. Pentru anumite nuante/efecte este necesar amestecarea vopselei cu aditivi. Nu se aplica la temperatura sub 5 grade Celsius si in conditii de ploaie.

## PARILDAYAN İŞİLTİLLAR

Floe®; evinizi, keşfedilmemiş alanları ve sıcaklığı ile kumlu çöllerin ılıtısına veya Antartika'nın buz gibi ılıtdayan atmosferini büyük bir yansımaya dönüştüren kristal bir kaplamaya sahip dokulu bir boya efektidir.

## Temel Özellikler

- Kurşunsuz
- Su bazlı
- Temizlenebilir (iyice kürleştikten sonra)
- Yanmaz
- Kokusuz
- 9 çekici temel renk (600, 610, 620, 630, 640, 650, 660, 670 veya 680) ve 5 katkı maddesi (G6, G7, G8, G9, Metallo Bronz)

- Aşağıdakilere uygun olarak çok düşük VOC içeriği:

-AB Direktifi 2010/79/EU

-Fransız kararnameşi No:2011-321

## Paket Boyutu

- 1 US Quart - (1 kg)
- 1 Amerikan Galonu - (2,5 kg)
- Katkı maddesi 0,6 kg ve/veya Metallo 0,85 kg (1 galon için)
- Katkı maddesi 0,24 kg (1 litre için )

## Uygulama alanı

- 7 m<sup>2</sup>/kg/kaplama 600-620-630 için 1 kat gerektirir
- 11 m<sup>2</sup>/kg/kaplama 680 için 2 kat gerektirir
- 4 m<sup>2</sup>/kg/kaplama 610-640-650-660-670 için 1 kat gerektirir.

## Hazırlık

Boyanacak tüm yüzeyler temiz, kuru, gevşek ve pul pul dökülmüş malzemelerden arındırılmış olmalıdır. Böyle yüzeyleri ovalayın ve durulayın. Alt tabakayı uygun Colortek CoAcryl veya CIA tabanı ile astarlayın (10 renk mevcuttur: Beyaz, R10, R17, R27, R46, R65, R66, R68, R94 ve R96).

## Talimatlar

Tonlar, katkı maddelerinden birinin gerekli Floe® baz ile karıştırılmasıyla elde edilir. İyice karıştırılmış Floe®'yi her yöne alternatif fırça darbeleri kullanarak küçük miktarlarda yayın; istenen nihai etkiyi elde etmek için ıslıta parçacıklarını kaydırın. İkinci kat uygulaması daha zengin bir görüntü elde edilmesini sağlayacaktır.

**5 derece sıcaklığın altında veya yağmur beklentisinin olduğu durumlarda uygulamayın Öneriler**

## Optimum

Floe® bitişini elde etmek ve bu üründeki özel ılıtılı kristalleri ortaya çıkarmak için belirlenen duvarlara uygun aydınlatma yapılmalıdır.

TR

प्लो एक क्रिस्टलीय फिनिष के साथ एक बनावट वाला पेंट प्रभाव है जो आपके घर को अपने गर्म और झिलमिलाने रंगों के माध्यम से रेतीले रेगिस्तानों के वातावरण या अंटार्कटिक के ठंडे और ल्यूमिनसेंट बर्फाले विस्तार के माध्यम से बड़े और बेरोजगार स्थानों के प्रतिबिंब में बदल देगा।

## तकनीकी नाम

टेक्सचर्ड मेटैलिक फिनिष जिसमें स्पार्कल्स शामिल हैं।

## प्रमुख गुण

- अनलेडेड
- वाटर बेस्ड
- घो सकते हैं (पूर्ण इलाज के बाद)

## गैर ज्वलनशील

बिना गंध

9 अटैरेक्टिव बेस कलर (600,610,620,630,640,650,660,670 या 680) और 5 एडिटिव्स (G6, G7, G8, G9, Metallo Bronz)

के अनुपालन में बहुत कम वीओसी सामग्री

– ईयू निर्देश 2010/79/ईयू

– फ्रेंच डिक्री नंबर 2011–321

## पैक का आकार

- 1 यूएस क्वार्ट – (1kg)
- 1 यूएस गैलन – (2.5kg)
- योजक 0.6 kg और/या मेटलो 0.85 kg (1 गैलन के लिए)
- योज्य 0.24 kg (1क्वार्ट के लिए)

## कवरेज

7m<sup>2</sup> / किग्रा / कोट। 600–620–630 . के लिए 1 कोट की आवश्यकता है 11m<sup>2</sup> / किग्रा / कोट। 680 . के लिए 2 कोट की आवश्यकता है

4m<sup>2</sup> / किग्राकोट। 610–640–650–660–670 . के लिए 1 कोट की आवश्यकता है

## वैचारि

पेंट की जाने वाली सभी सतहें साफ, सूखी और ढीली और परतदार सामग्री से मुक्त होनी चाहिए।

उपयुक्त COLORTEK® CO.ACRYL या CIA बेस (10 रंग उपलब्ध: सफेद, R10, R17, R27, R46, R65, R66, R68, R94 ve R96) के साथ सस्ट्रेट को रगड़ें और खंगालना करें।

## निर्देश

आवश्यक प्लो बेस के साथ एडिटिव्स में से एक को मिलाकर शेड्स प्राप्त किए जाते हैं।

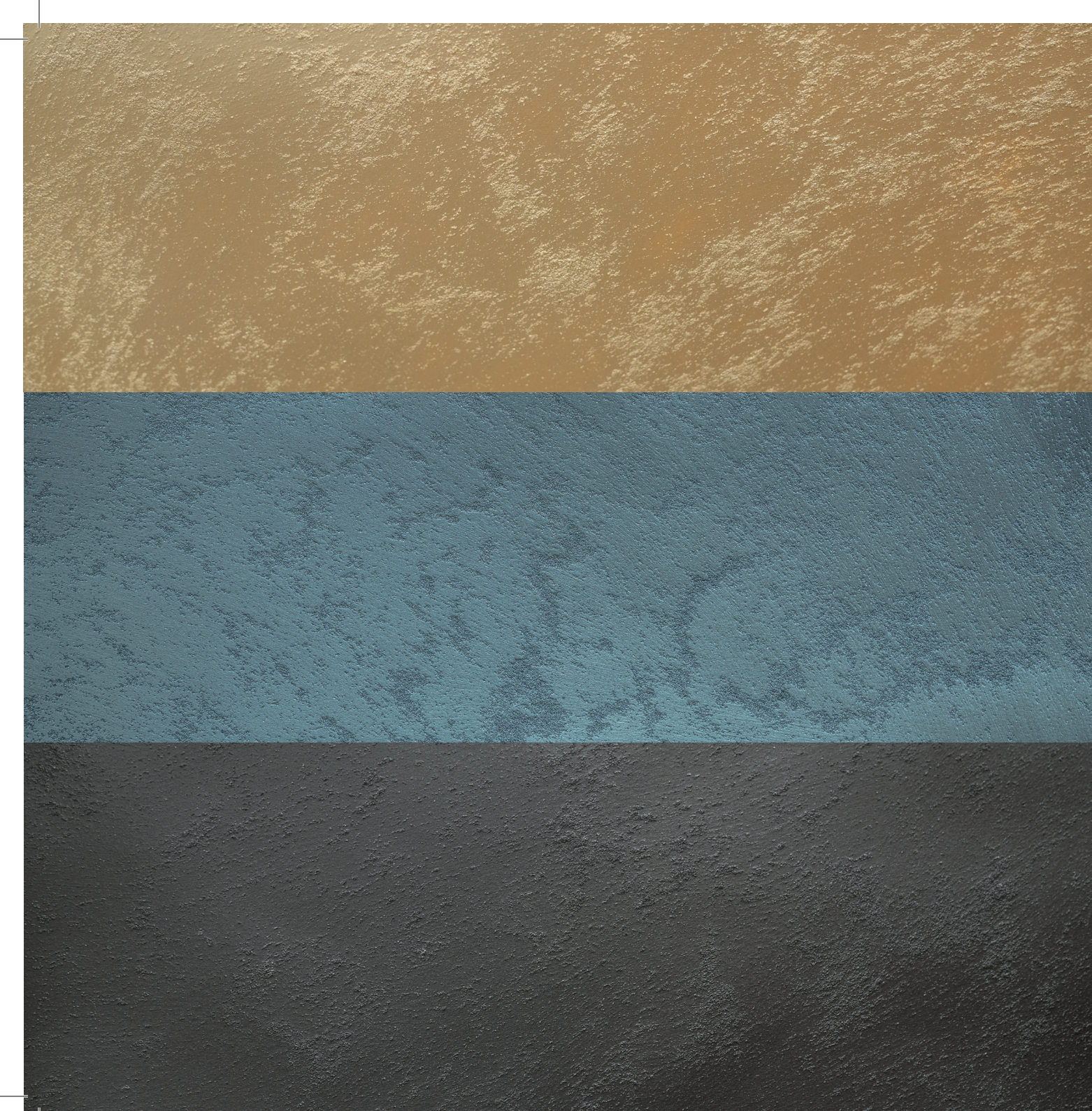
अच्छी तरह से हिलाएं – सभी दिशाओं में वैकल्पिक ब्रश स्ट्रोक का उपयोग करके प्लो को कम मात्रा में फैलाएं

वांछित अंतिम प्रभाव प्राप्त करने के लिए चमक कणों को शिफ्ट करें।

एक दूसरा कोट लगाया जा सकता है और इसके परिणामस्वरूप अधिक समृद्ध अंतिम प्रभाव होगा।

5°C से नीचे के तापमान पर या जब बारिश होने की संभावना हो, तब आवेदन न करें।

HI



**600/00**  
Iceberg

WHITE



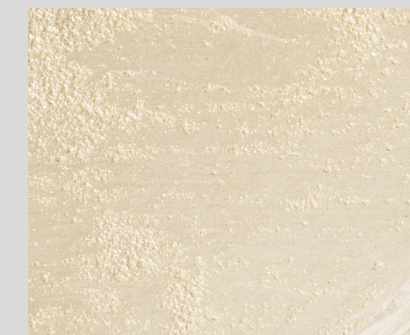
**600/103**  
Paper

IT34-2



**600/106**  
Reflets

IT34-5



**600/101**  
Valanga

IT40-2



**600/104**  
Mine

IT148-6



**600/107**  
Powder

IT34-5



**600/102**  
Dalle

IT40-2



**600/105**  
Warm

IT34-5



**620/108 + ADDITIVE 6 & 9**  
Moon

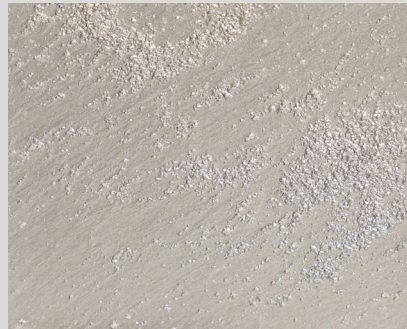
IT148-6



**600/109**

Tin

IT148-6



**600/110**

Mink

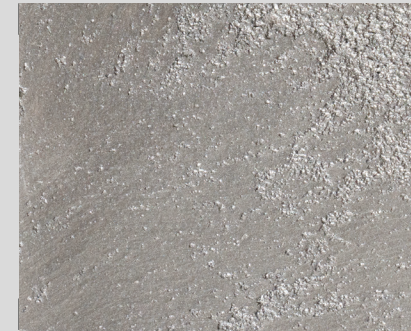
IT148-6



**600/111**

Fossil

IT148-6



**600/112**

Smoke

IT148-6



**600/115**

Trout

IT148-6



**600/113**

Rihno

IT148-6



**600/116**

Iron

IT148-6



**600/114**

Shadow

IT148-6



**620/117 + ADDITIVE 9**

Spark

R10



**600/118**  
Morse

IT40-2



**600/121**  
Ritmo

IT37-3



**600/124**  
Line

IT33-2



**600/127**  
Sepia

200-4



**600/130**  
Cinnamon

200-4



**600/133**  
Espresso

200-4



**600/119**  
Crosta

IT34-2



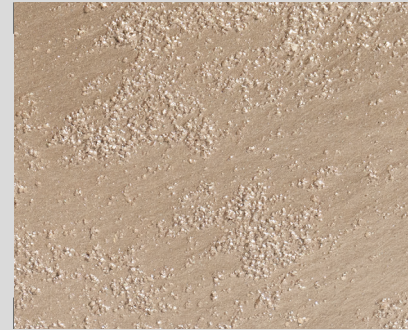
**600/122**  
Drops

IT37-3



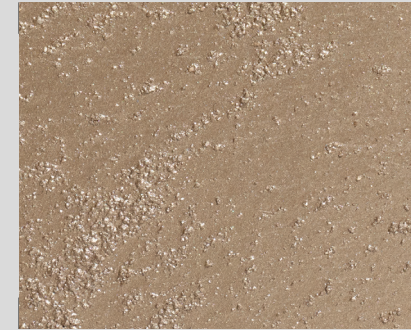
**600/125**  
Aurora

IT33-2



**600/128**  
E cru

200-4



**600/131**  
Umber

200-4



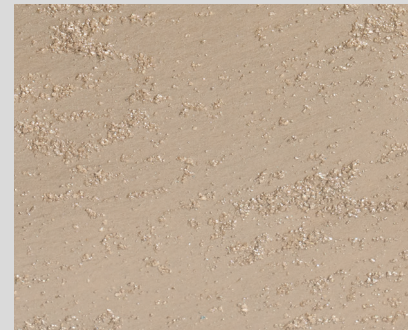
**600/134**  
Coffee

200-4



**600/120**  
Silver

IT33-2



**600/123**  
Ashes

IT37-3



**600/126 + ADDITIVE 9**  
Linen

IT33-2



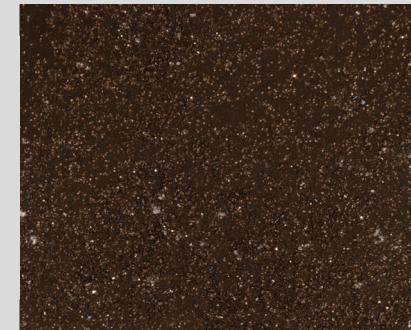
**600/129**  
Gravity

200-4



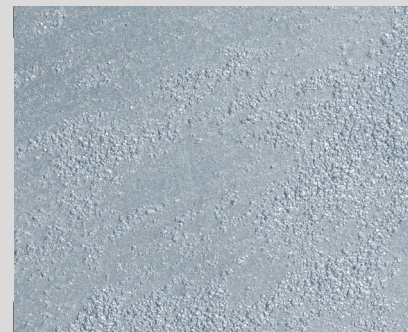
**600/132**  
Caramel

200-4



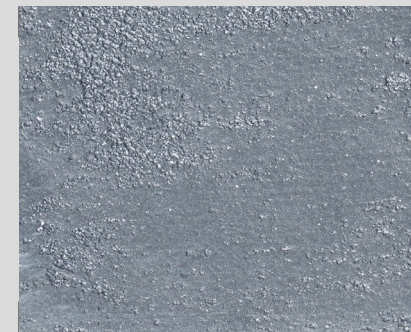
**620/135 + ADDITIVE 9**  
Night

R96



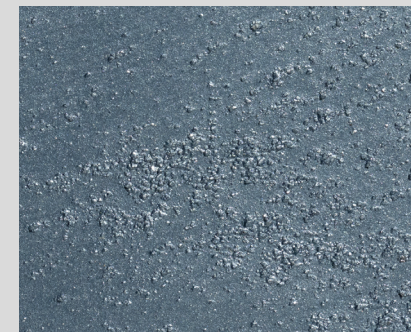
**600/136**  
Olympic

036-3



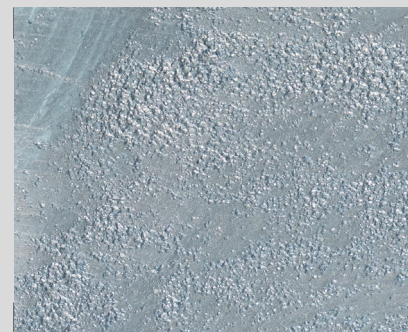
**600/139**  
Yale

036-3



**600/142**  
Denim

036-3



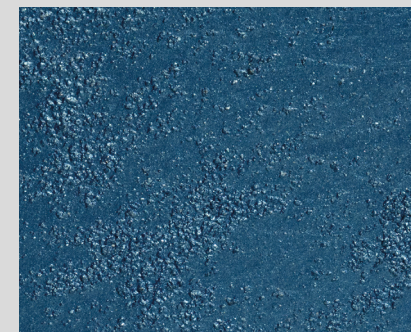
**600/137**  
Rain

036-3



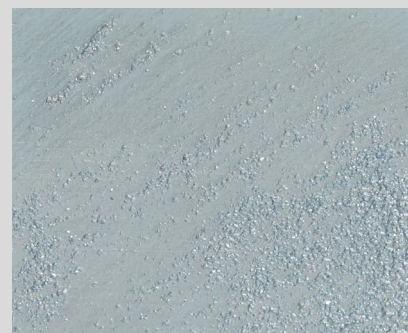
**600/140**  
Freeze

036-3



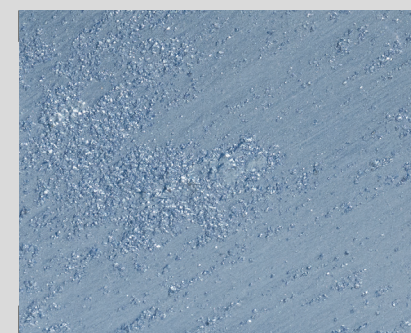
**600/143**  
Star

1T74-4



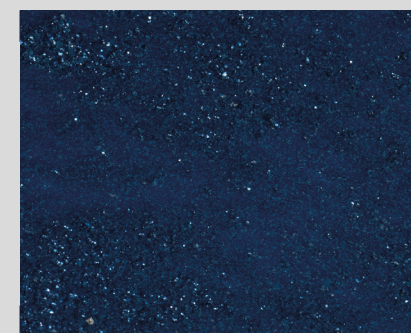
**600/138**  
Bell

036-3



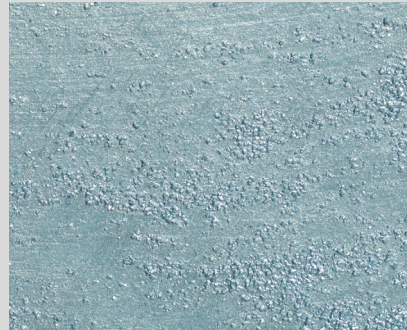
**600/141**  
Sea

036-3



**620/144 + ADDITIVE 6**  
Blues

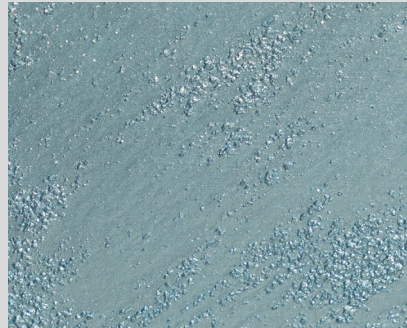
1T74-4



**600/145**

Sapphire

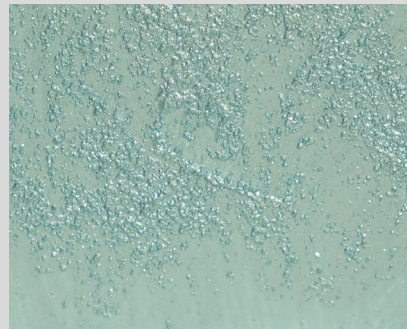
036-3



**600/146**

Sky

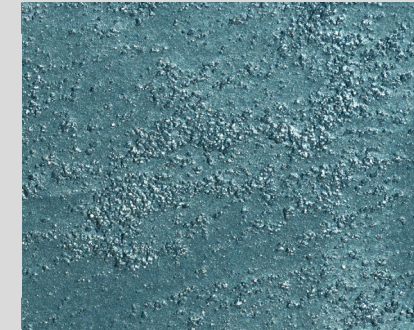
036-3



**600/147**

Water

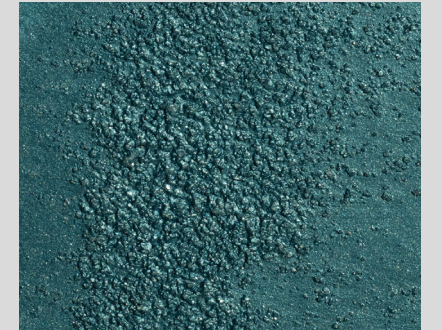
IT20-3



**600/148**

Goutte

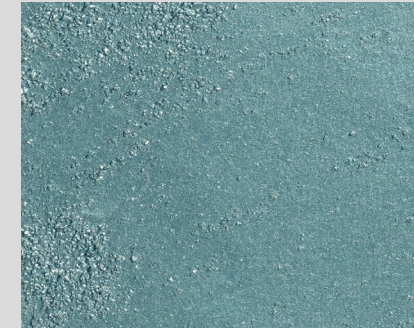
036-3



**600/151**

Azure

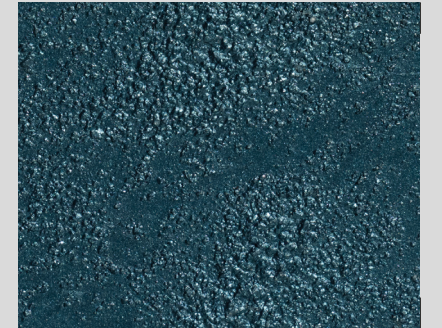
036-3



**600/149**

Space

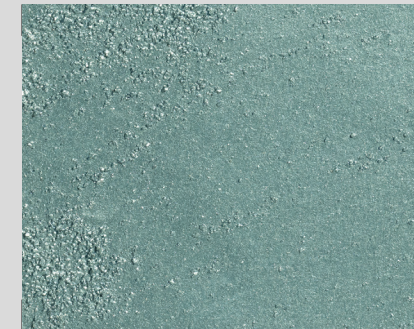
036-3



**600/152**

Navy

036-3



**600/150**

Sub

IT20-3



**620/153 + ADDITIVE 8**

Tuffo

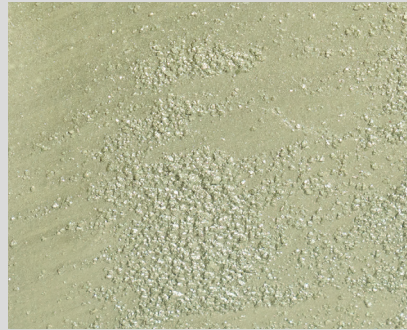
R65



**600/163**

152-2

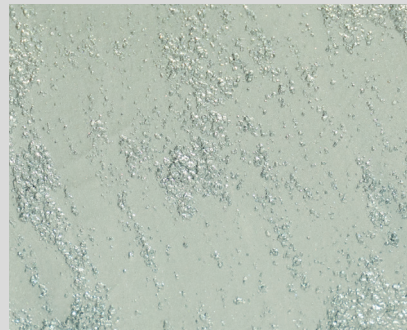
Dust



**600/164**

152-2

Trueno



**600/165**

146-3

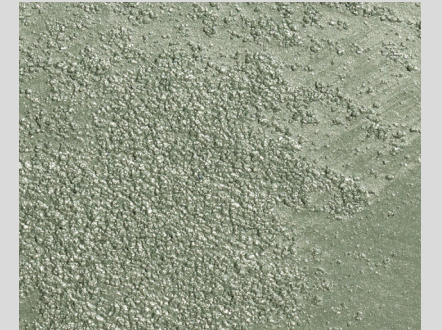
Ice



**600/166**

152-2

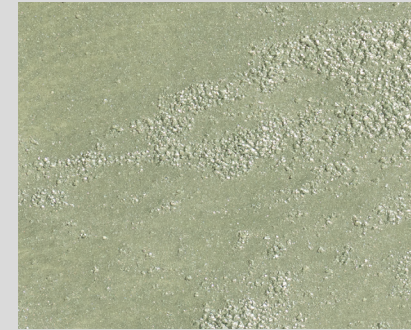
Mint



**600/169**

152-2

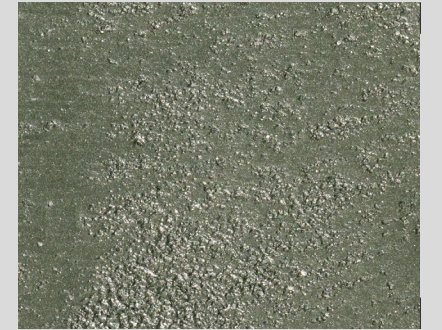
Hunter



**600/167**

152-2

Landscape



**600/170**

152-2

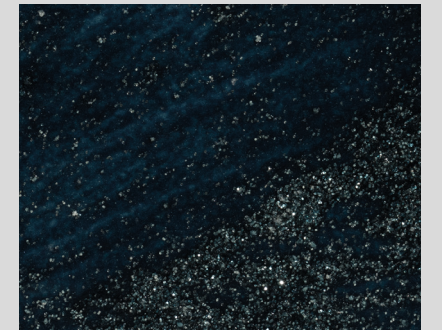
lode



**600/168**

146-3

Jewel



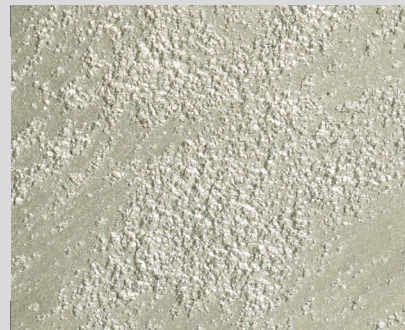
**620/171 + ADDITIVE 9**

R65

Aqua







**600/154**

Jade

152-2



**600/157**

Cedars

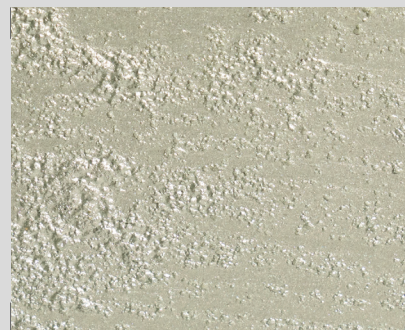
152-2



**600/160**

Army

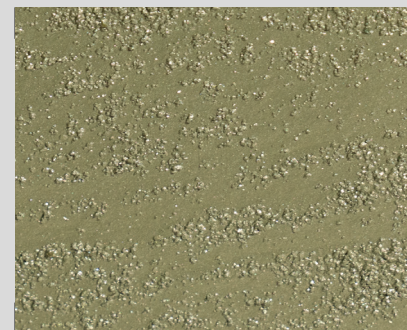
152-2



**600/155**

Glassy

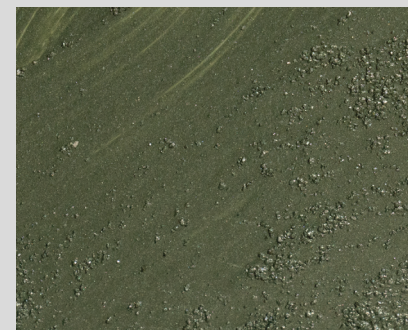
152-2



**600/158**

Forest

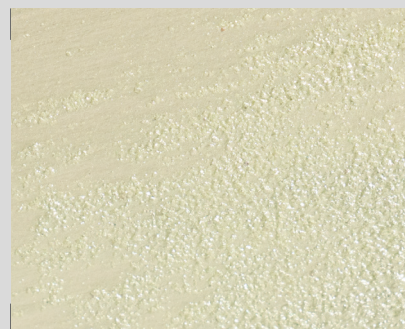
152-2



**600/161**

Olive

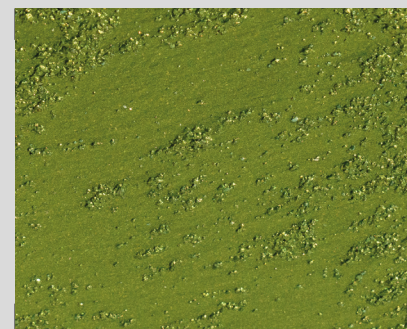
152-2



**600/156**

Bay

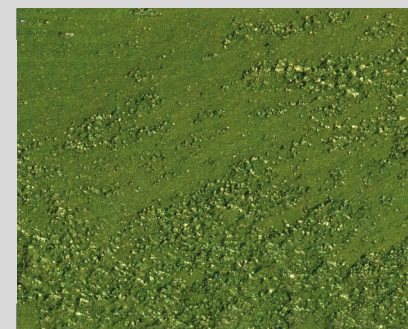
111-2



**630/159**

Pin

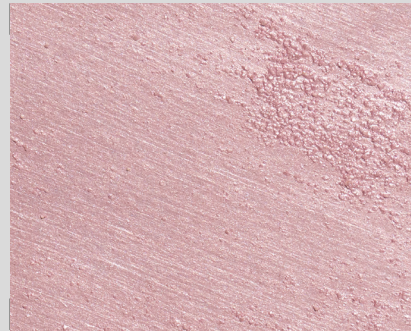
071-6



**630/162**

Fuego

071-6



**600/172**  
Blush

IT79-2



**600/175**  
Fresh

IT79-2



**600/178**  
Candy

IT79-2



**600/183**  
Soft

179-4



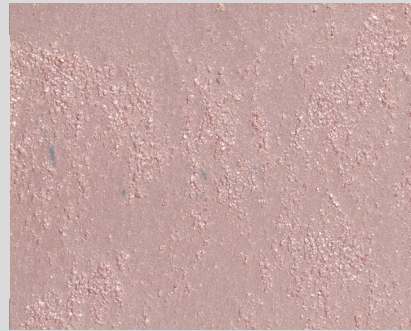
**600/182**  
Blossom

179-4



**600/181**  
Desire

179-4



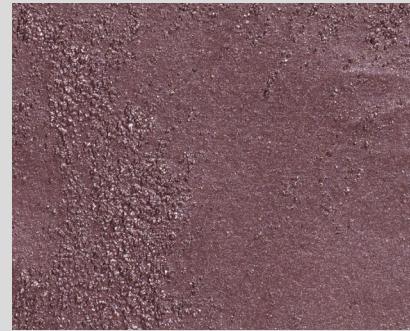
**600/173**  
Makeup

IT79-2



**600/176**  
Taffy

IT79-2



**600/179**  
Rubby

IT79-2



**600/186**  
Lava

179-4



**600/185**  
Magma

179-4



**600/184**  
Mist

179-4



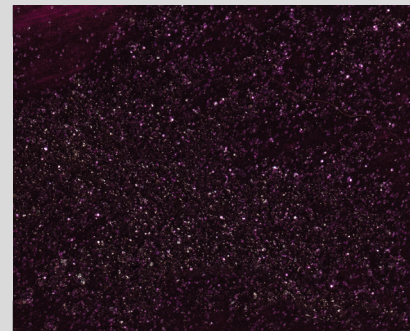
**600/174**  
Ultra

IT79-2



**600/177**  
Punch

IT79-2



**620/180 + ADDITIVE 9**  
Wish

R66



**600/189 + ADDITIVE 9**  
Chili

179-4



**600/188**  
Redwood

179-4



**600/187**  
Sangria

179-4



620/00 + ADDITIVE 6 Silverlining  
620/108 + ADDITIVE 6 & 9 Moon

Linen effect  
white



620/00 + ADDITIVE 6  
Silverlining

Dragged effect  
white



**600/190**  
Candle

094-5



**600/193**  
Desert

094-5



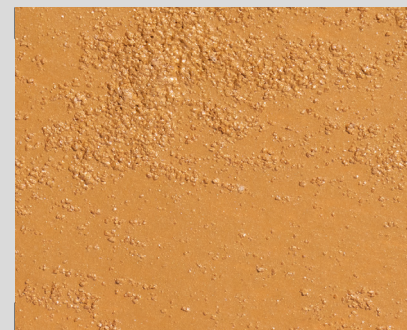
**630/00**  
Melt

R17



**600/191**  
Wings

100-4



**600/194**  
Clay

100-4



**620/00 + ADDITIVE 8**  
Lamar

WHITE



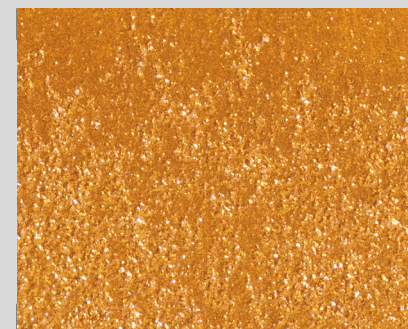
**600/192**  
Tango

100-4



**620/00 + METALLO BRONZE**  
Sunshine

R46



**620/195 + 2X (ADDITIVE 7)**  
Ever

R17



**610/00**  
Aurelia

R17



**610/198**  
Flowing

R17



**610/201**  
Land

R17



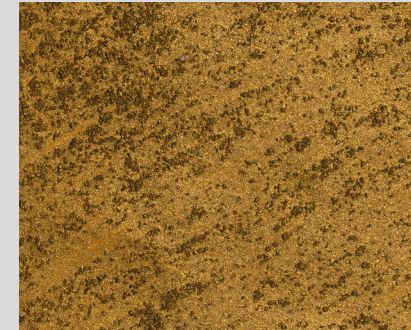
**610/204**  
Nature

R17



**640/207**  
Cave

R17



**640/209**  
Soil

R17



**610/196**  
Sand

R17



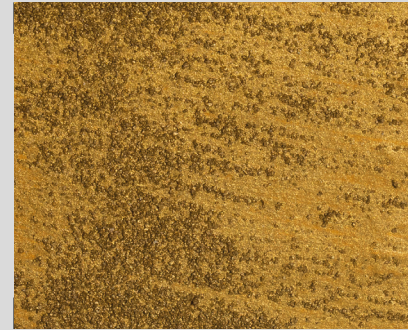
**610/199**  
Molten

R17



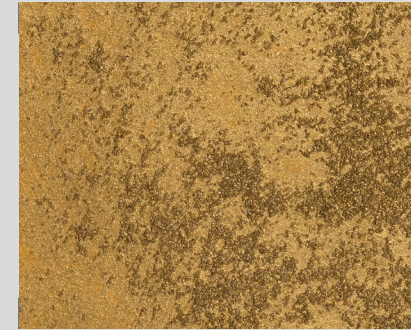
**610/202**  
Volcano

R17



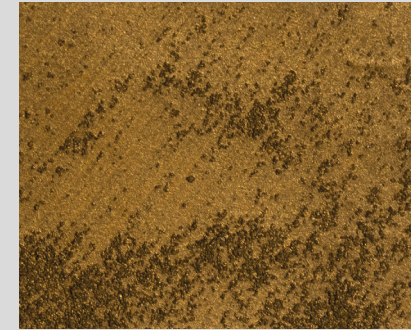
**640/205**  
Grass

R17



**640/00**  
Hema

R17



**640/210**  
Pepper

R17



**610/197**  
Dijon

R17



**640/200**  
Liquid

R17



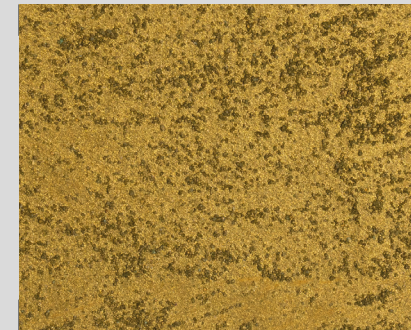
**610/203**  
Rock

R17



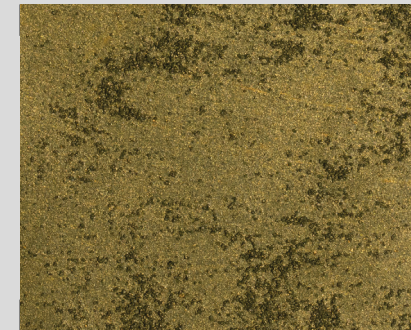
**610/206**  
Roots

R17



**640/208**  
Earth

R17



**640/211**  
Tree

R17



**680/218**  
Network

146-3



**680/219**  
Drift

152-2



**670/232**  
Birch

152-2



**670/234**  
Beech

184-3



**680/231**  
Elm

146-3



**680/220**  
Deep

146-3



**670/233**  
Nutmeg

152-2



**670/235**  
Maple

184-3



**680/00**  
Frost

White



**670/00**  
Kin

White

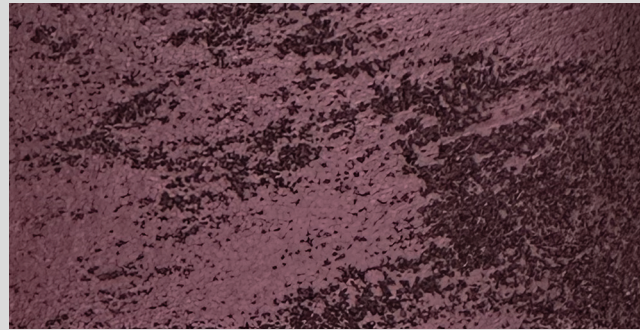
680/00

670/00



**660/236**  
Velvet

R 94



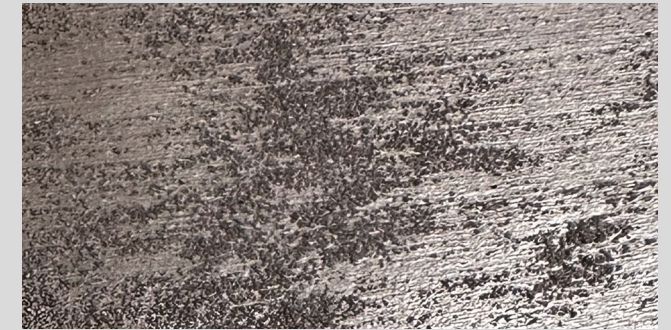
**660/238**  
Plum

R 66



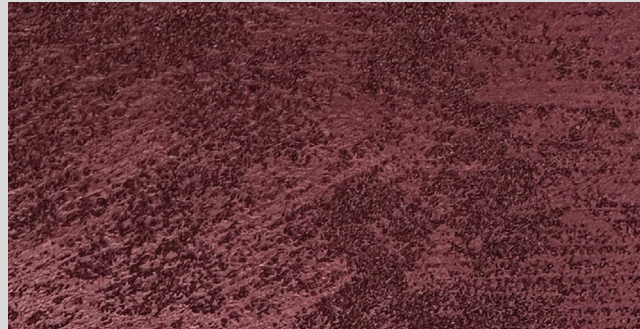
**650/240**  
Gilt

189-3



**650/241**  
Seashell

197-2



**660/237**  
Scarlet

R 66



**660/239**  
Kazoo

R 66



**650/215**  
Think Pink

189-3



**650/242**  
Percheron

197-2



**660/00**  
Vino

R 94



**650/213**  
Fondant

IT 148-6

660/00

650/00

