

VELUTTO®
TACTILE FEEL

1500/119 - Rayon Leather Effect Base 140-4



1500/119 - Rayon Denim Vertical Fabric Effect Base 140-4



1500/119 - Rayon Denim Textile Effect Base 140-4

EN

VELUTTO®

Velutto® is an interior decorative paint reminiscent of soft, pliable leather. It can be used to achieve a variety of textile effects.

Technical Name
Tactile Feel.

Key Properties

- No Lead
- Water Based
- Washable (after full curing)
- Non-flammable
- Odorless
- 1 attractive base color (1500)
- Very low VOC content in compliance with:
 - EU directive 2010/79/EU
 - French decree No: 2011-321

Pack Size

- 1 US Quart - (0.75 kg)
- 1 US Gallon - (3 kg)

Recommended Uses

Internal applications

Type of Substrate

Plaster, embossed wall coverings, gypsum board, concrete, cement rendering, brick work & block work.

Finish

Dead flat finish.

Coverage

8 to 10 m²/kg/coat – 2 coats required.

Drying Time

20 min. to 1 hour depending on temperature and humidity.

Thinner

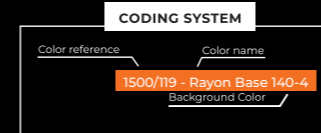
No thinning required.

Preparation

All surfaces should be clean, dry and free from loose & flaking material. Prime the substrate with the appropriate Colortek® Co.Acryl or CIC primer.

Instructions Leather Effect

Apply Velutto using a brush in small crisscross strokes. Pass over the surface with a product-free brush, using longer strokes in all directions to blend the texture. After about 4 hours at 25°C, apply a second coat of Velutto, using the same procedure as described above.



Instructions Denim Vertical Fabric Effect

Spread Velutto in strips of about 1 meter wide and 1 - 2 meters high and immediately brush the surface using Colortek Dragging Brush (Ref. 189) from top to bottom and vice versa. Let the surface dry and apply a second coat using the same technique.

Instruction Denim Textile Effect

Use the same technique as for the vertical fabric effect, but apply the second coat in a horizontal direction.

Instructions Smooth Effect

Apply Velutto with a spray gun and let surface dry.

Instructions Note.

Once the second coat has dried, sand the surface with a Mirka Abralon 1000 or a normal 2000 grit sanding paper and clean the surface with a damp sponge.

Equipment Cleaning

Remove leftover product and clean with warm soapy water.

Storage

Store in a dry area. Protect from frost and humidity.

Additional Information

Product batches are subject to stringent quality control checks in conformity with ISO 9001:2015.

FR

VELUTTO®

Velutto® est une peinture décorative se caractérisant par une finition tactile douce et souple au toucher permettant de recréer des effets textiles.

Nom Technique

Effet tactile.

Propriétés

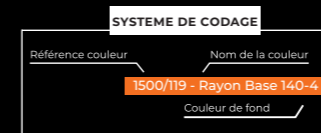
- Ne contient pas de plomb
- Produit en base eau
- Lessivable
- Inodore
- 1 base (1500)
- Faible teneur en COV conformément aux:
 - Directive EU directive 2010/79/EU
 - Décret Français No: 2011-321

Emballage

- 1 US Quart - (0.75 kg)
- 1 US Gallon - (3 kg)

Usage Recommandé

Application intérieure.



Types de Support

Enduit, ciment, plâtre et plaque de plâtre, anciennes peintures usuelles absorbantes, etc.

Finition

Finition ultra matte.

Rendement

Environ 8 à 10 m² / kg / couche - 2 couches requises.

Temps de séchage

20 à 60 minutes en fonction des conditions climatiques et de la température ambiante.

Diluant

Aucune dilution requise.

Préparation du Support

Le support doit être dur, propre, sain, sec, cohésif et libre de toute matière telle que salpêtre, mousse, lichen ou autres micro-organismes pouvant empêcher l'adhérence du produit sur le support. Dans un premier temps, appliquer la base couleur appropriée en utilisant Colortek® Co.Acryl ou CIC.

Application Effet Cuir

Appliquer à l'aide d'une brosse en suivant un mouvement croisé Immédiatement revenir sur la surface en utilisant une brosse propre afin homogénéiser la texture. Laisser la surface sécher et appliquer une seconde couche en utilisant la même procédure.

Application Effet Denim Vertical

Appliquer à l'aide d'un rouleau mohair. Revenir sur la surface du haut vers le bas et du bas vers le haut en utilisant la brosse Ref. 189. Laisser la surface sécher et appliquer une seconde couche mais en utilisant un mouvement horizontal.

Application Effet Denim

Appliquer à l'aide d'un rouleau mohair. Revenir sur la surface du haut vers le bas et du bas vers le haut en utilisant la brosse Ref. 189. Laisser la surface sécher et appliquer une seconde couche en utilisant la même procédure.

Application Effet Lisse

Appliquer à l'aide d'un pistolet compresseur.

Note Important Concernant l'application

Une fois la seconde couche ayant séchée, poncer la surface avec une ponceuse type Abralon équipée d'un disque 1000 ou 2000.

Nettoyage des Outils

Nettoyer avec de l'eau tiède et du savon.

Information Additionnelle

La fabrication de Velutto® est conforme au standard ISO 9001 : 2015

Stockage

Stocker le produit à l'abri de l'humidité et du froid.





1500/62 - Soie Base White



1500/67 - Canvas Base White



1500/73 - Cloth Base 159-1



1500/79 - Velvet Base 176-1



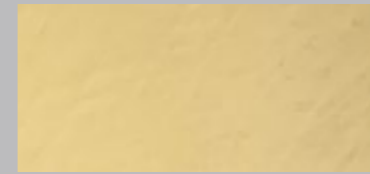
1500/82 - Fiber Base White



1500/86 - Rep Base 136-2



1500/91 - Spandex Base 1500-42



1500/96 - Wool Base 1500-46



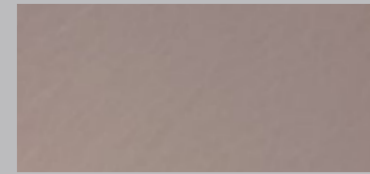
1500/100 - Tull Base White



1500/104 - Buckram Base White



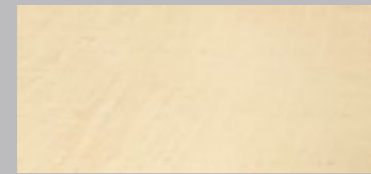
1500/108 - Felt Base 180-4



1500/114 - Lace Base 196-3



1500/62 - Soie Base 162-1



1500/68 - Hodden Base OW-7-1



1500/74 - Camlet Base 171-1



1500/79 - Velvet Base 178-2



1500/82 - Fiber Base 134-1



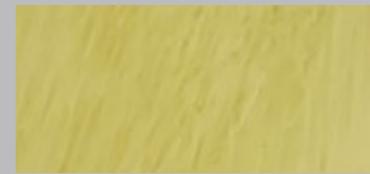
1500/87 - Moleskin Base 138-2



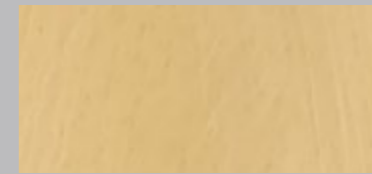
1500/92 - Gingham Base 1500-43



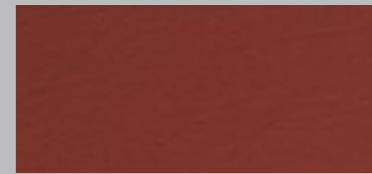
1500/97 - Batiste Base 1500-53



1500/100 - Tull Base 1500-47



1500/104 - Buckram Base 1500-06



1500/109 - Flax Base 188-6



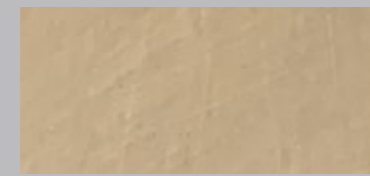
1500/115 - Toile Base 196-5



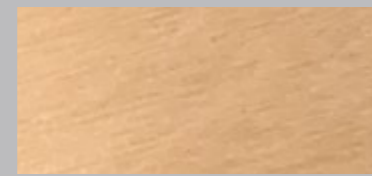
1500/63 - Scrim Base 162-2



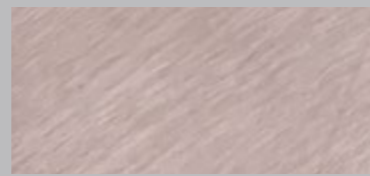
1500/69 - Jersey Base 160-3



1500/75 - Polyester Base 171-2



1500/80 - Gauze Base 178-2



1500/83 - Fabric Base 135-2



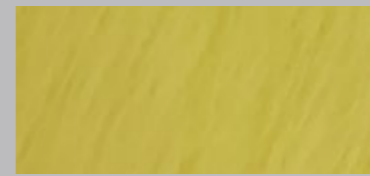
1500/88 - Synthetic Base 146-3



1500/93 - Woven Base 1500-44



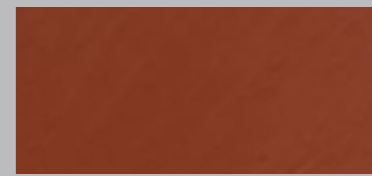
1500/98 - Drill Base 1500-53



1500/101 - Crochet 1500-48



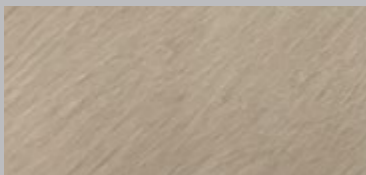
1500/105 - Supima Base 1500-04



1500/110 - Sari Base 187-6



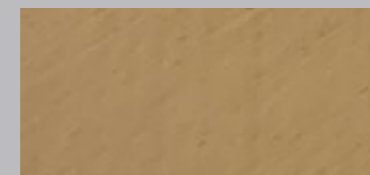
1500/116 - Moire Base 196-6



1500/64 - Voile Base 162-3



1500/70 - Crash Base 161-3



1500/76 - Satiné Base 169-5



1500/80 - Gauze Base 178-3



1500/84 - Leno Base 132-3



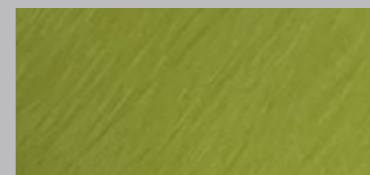
1500/89 - Modal Base 137-4



1500/94 - Lurex Base 1500-50



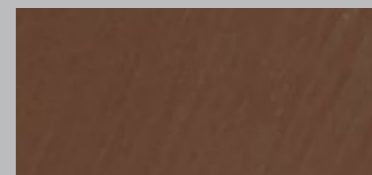
1500/98 - Drill Base 1500-45



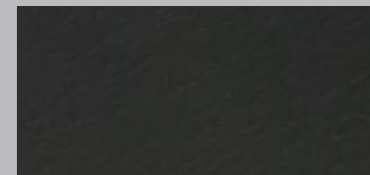
1500/102 - Poplin 1500-54



1500/106 - Raw Base 1500-05



1500/111 - Dazzle Base 183-6



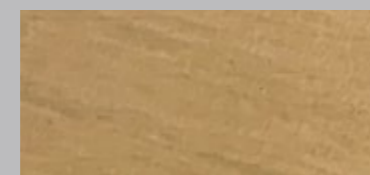
1500/117 - Wigan Base 133-6



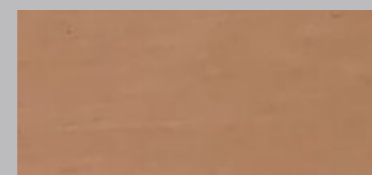
1500/65 - Oxford Base 159-4



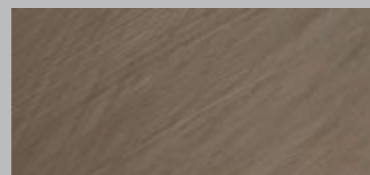
1500/71 - Camel Base 160-4



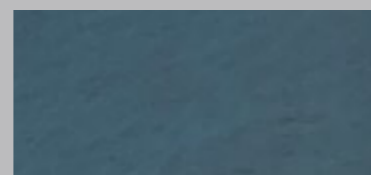
1500/77 - Ticking Base 168-4



1500/81 - Melton Base 178-4



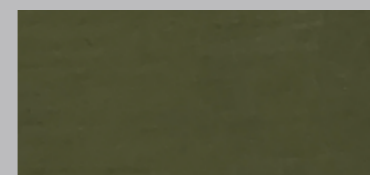
1500/85 - Cashmere Base 131-4



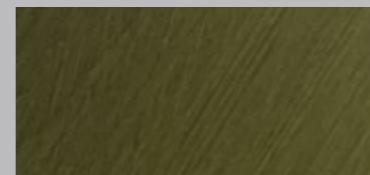
1500/90 - Dimity Base 37-5



1500/95 - Wavy Base 1500-50



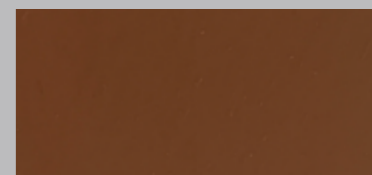
1500/99 - Lawn Base 1500-55



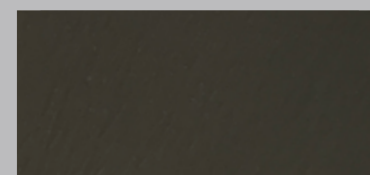
1500/103 - Armure 081-6



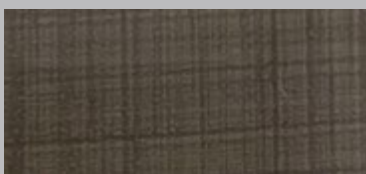
1500/107 - Foil Base 1500-05



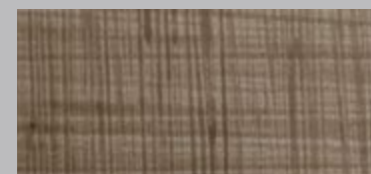
1500/112 - Chino Base 186-6



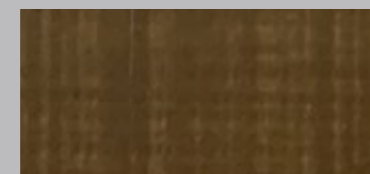
1500/118 - Carbon Base R10



1500/66 - Damask Base 158-5



1500/72 - Nylon Base 160-4



1500/78 - Challis Base 171-5



1500/81 - Melton Base 178-4



1500/85 - Cashmere Base 131-4



1500/90 - Dimity Base 137-5



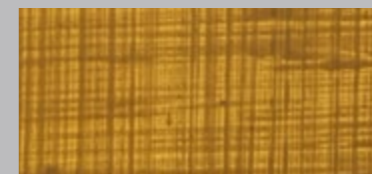
1500/95 - Wavy Base 1500-50



1500/99 - Lawn Base 1500-55



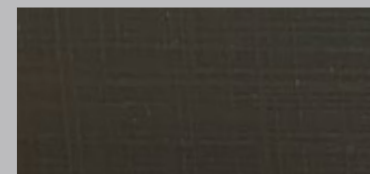
1500/103 - Armure 081-6



1500/107 - Foil Base 1500-05



1500/113 - Wood Base 183-6



1500/118 - Carbon Base R10