

METALLO®

PRECIOUS METALS



COLORTEK®

EN

METALLO®

Metallo® helps you achieve a metallic decorative and durable finish that radiates designer quality in 50 rich, opulent metallic colors.

Technical Name

Metallic Finish.

Key Properties

- Water Based
- Washable (after full curing)
- Ideal for stenciling
- Very low VOC content in compliance with:
 - EU directive 2004/42/EC
 - FRENCH DECREE NO:2011-321

Pack Size

- 1 US QUART- (0.85 KG)
- 1 US Gallon - (3.4 kg)

Recommended Uses

Internal Applications.

Type of Substrate

Plaster, embossed wall coverings, gypsum board, concrete, cement rendering, brick work.

Finish

Silky luster finish.

Coverage

Approximately 7 m²/kg/coat – 2 coats required.

Drying Time

15 – 60 minutes depending on ambient temperature and humidity.

Thinner

Up to 10% of clean water if needed.

Instructions

Apply using a brush or roller, letting each coat dry in between. Take care to eliminate application marks, these marks will be highlighted by the metallic sheen. Scumble is used to get the final dragging effect. For textural effects, use Colortek® Bazalt.

CODING SYSTEM



FR

PRECIOUS METALS

Metallo® vous permet d'obtenir des effets décoratifs métalliques grâce à ses 50 couleurs métalliques.

Nom Technique

Finition Métallique.

Propriétés

- Produit à base eau
- Lavable
- Idéal pour les pochoirs
- Faible teneur en COV conformément aux:
 - Directive EU Directive 2010/79/EU
 - Décret Français No: 2011 – 321

Emballage

- 1 US QUART- (0.85 KG)
- 1 US Gallon - (3.4 kg)

Usage recommandé

Application en intérieur

Types de Support

Enduit, ciment, plâtre, anciennes peintures absorbantes, etc.

Finition

Finition lustrée.

Rendement

7m²/kg/couche - 2 couches requises.

Temps de Séchage

Environ 15 à 60 minutes en fonction des conditions climatiques.

Diluant

Diluer avec un maximum de 10% d'eau.

Instructions

Appliquer avec une brosse ou un rouleau. Éviter les marques de reprises en les travaillant avec une brosse à poils doux propre et sèche. Scumble peut être utilisé pour obtenir un effet brossé. Pour un effet texturé, utiliser Colortek® Bazalt.



COLORTEK®

Product designed in the EU



www.colortek.eu
info@colortek.eu



5 283012 912980

Synergy, Added Value, Continuous Improvement,
Diversity, Integrity, Social Responsibility.



Roman Silver



Roman Silver - Dark Highlighter



Roman Silver - Raw Sienna



R94 - Roman Silver



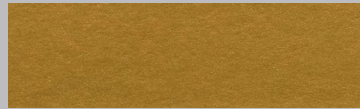
R10 - Roman Silver



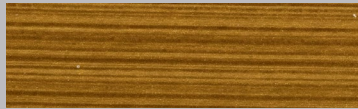
Bazalt - Roman Silver



273 - Velvet Satiné



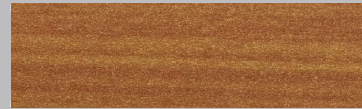
Gold



Gold - Dark Highlighter



Flash Gold - Raw Sienna



R94 - Gold



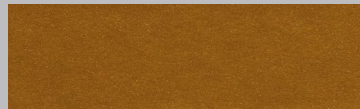
R10 - Gold



Bazalt - Gold



273 - Flash Gold



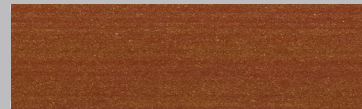
Heraldic Gold



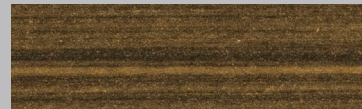
Heraldic Gold - Dark Highlighter



Gold - Raw Sienna



R94 - Heraldic Gold



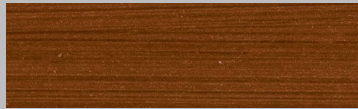
R10 - Heraldic Gold



Bazalt - Heraldic Gold



Bronze



Bronze - Dark Highlighter



Heraldic Gold - Teak



R94 - Bronze



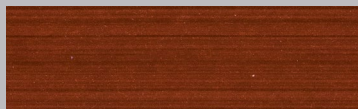
R10 - Bronze



Bazalt - Bronze



Copper



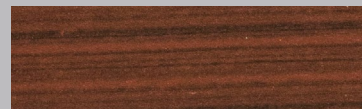
Copper - Dark Highlighter



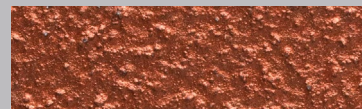
Copper - Raw Sienna



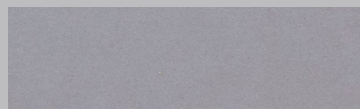
R94 - Copper



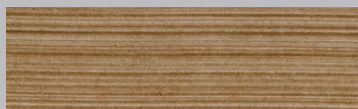
R10 - Copper



Bazalt - Copper



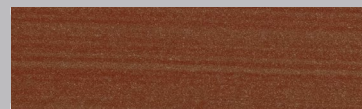
Flash Gold



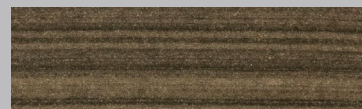
Flash Gold - Dark Highlighter



Blue - Teak



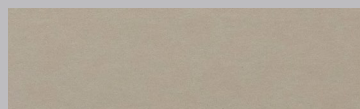
R94 - Flash Gold



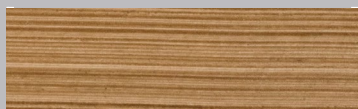
R10 - Flash Gold



Bazalt - Flash Gold



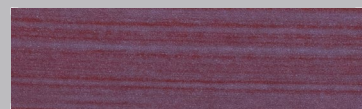
Blue



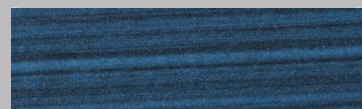
Blue - Dark Highlighter



Roman Silver - Teak



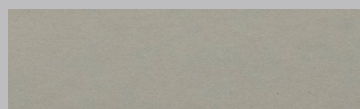
R94 - Blue



R10 - Blue



Bazalt - Blue



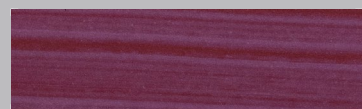
Violet



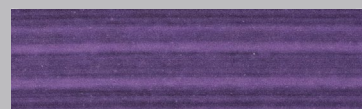
Violet - Dark Highlighter



Violet - Raw Sienna



R94 - Violet



R10 - Violet



Bazalt - Violet