

# WE TIE THE FUTURE OF GRAPE VINE



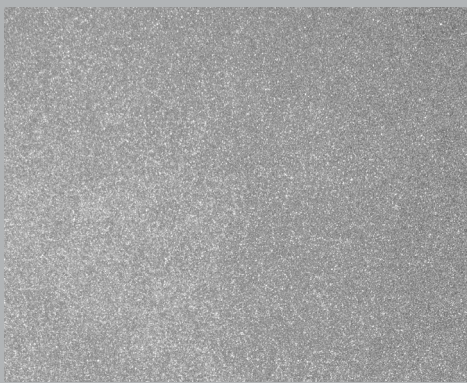
COLORTEK®

CRYSTALLINE CARBON FINISH

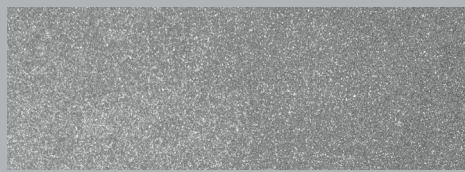


[www.colortek.eu](http://www.colortek.eu)  
[info@colortek.eu](mailto:info@colortek.eu)

  [colortekpaints](#)



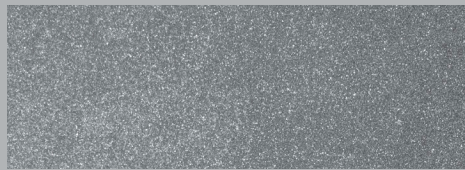
1800/00 - Steel



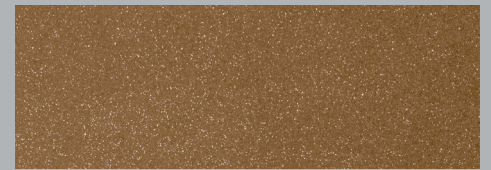
1800/01 - Iron



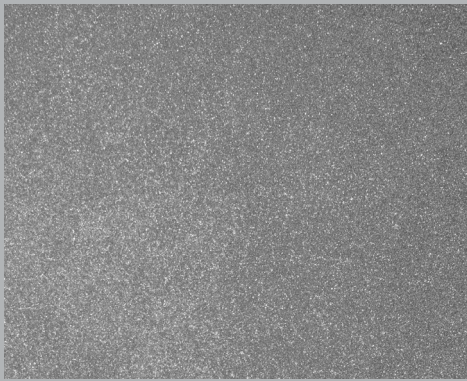
1800/11 - Jasper



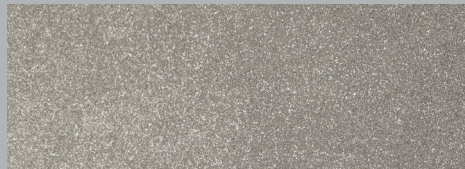
1800/02 - Carbon



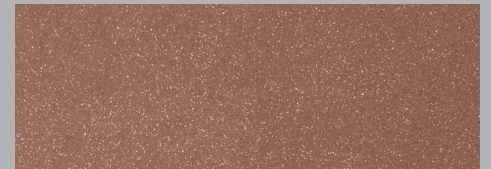
1800/12 - Clay



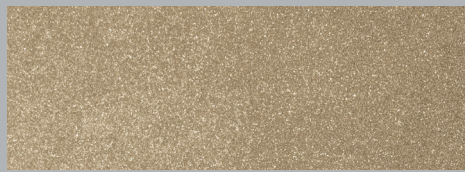
1800/00 - Steel + Additive 6



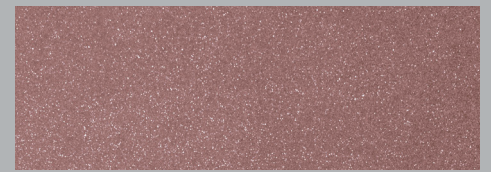
1800/03 - Metal



1800/13 - Copper



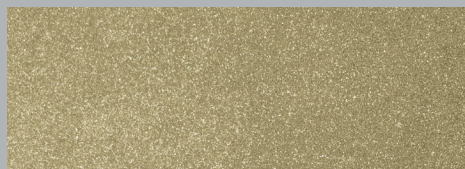
1800/04 - Powder



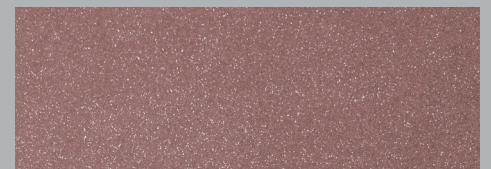
1800/14 - Diaspore



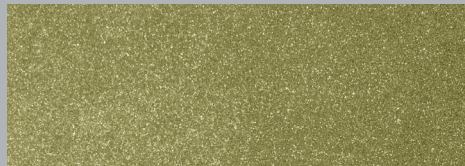
1800/00 - Steel + Additive 9



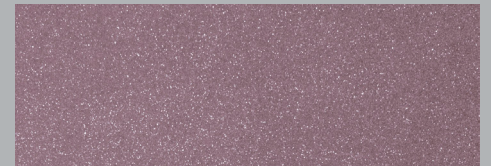
1800/05 - Beryl



1800/15 - Garnet



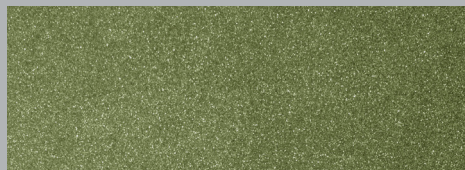
1800/06 - Amber



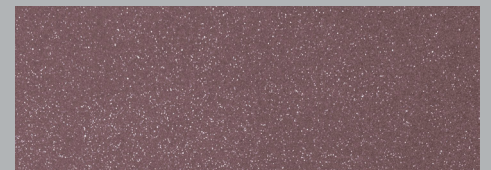
1800/16 - Spinel



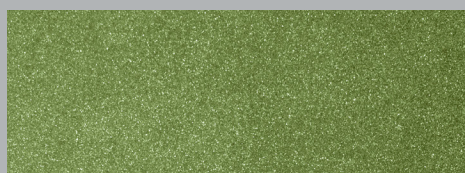
1800/00 - Steel + Additive 8



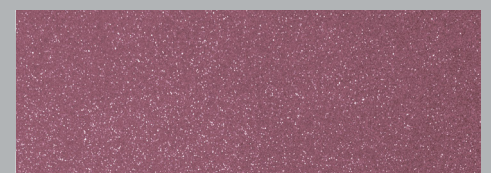
1800/07 - Dioptase



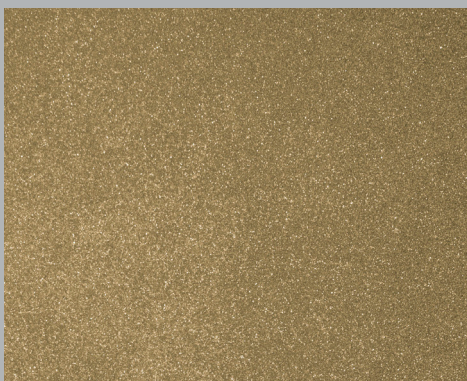
1800/17 - Beads



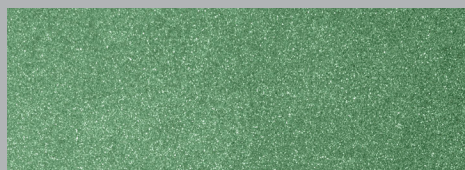
1800/08 - Citrine



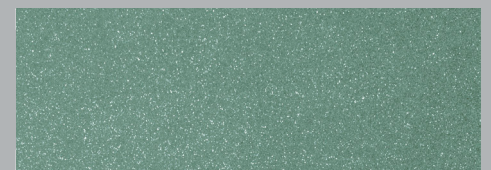
1800/18 - Ruby



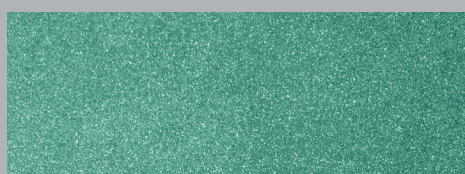
1800/00 - Steel + Additive 7



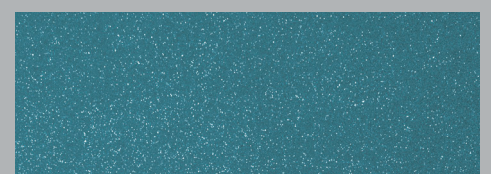
1800/09 - Agate



1800/19 - Emerald



1800/10 - Apatite



1800/20 - Sapphire