

**DESIGNER  
GENERAL  
PLASTER**



**COLORTEK®**



1200/131 - Sand

# What is DESIGNER PLASTER?

## **Natural Stone Finishes**

Colortek's Designer Plaster is a collection of mineral-based decorative coatings that replicate the organic beauty of natural stones surfaces.

Combined with special additives to control working characteristics, the Designer Plaster range allows master artisans to create a wide range of effects. These vary from thin and highly polished finishes that resemble marble to deeply textured surfaces that emulate travertine, limestone, clay, and more.

**PAINTS,** TECHNIQUES  
TECHNOLOGY AND **DESIGN**

[Designerpolishedplaster.com](http://Designerpolishedplaster.com)

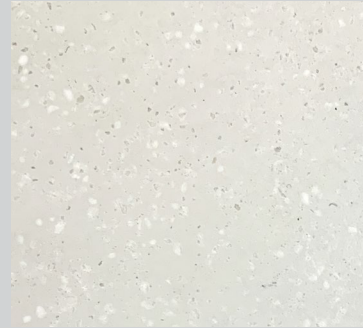
**SMOOTH**

MARBLE SILK





1200/00 - White Smoke



1200/103 - Gypsum



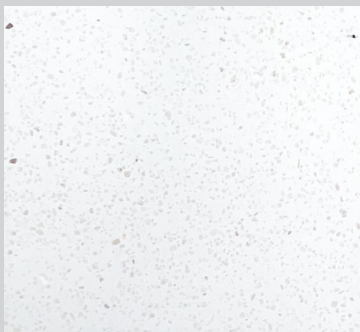
1200/106 - Mortar



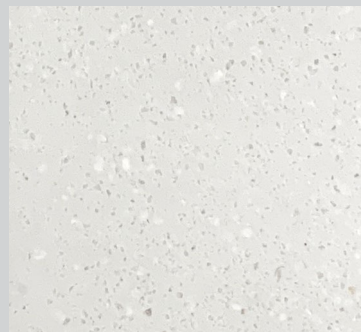
1200/104 - Plaster



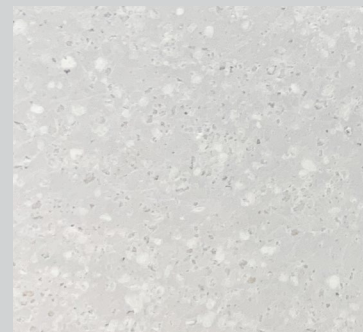
1200/107 - Blocks



1200/101 - Powder



1200/102 - Render



1200/105 - Cement



1200/108 - Polished







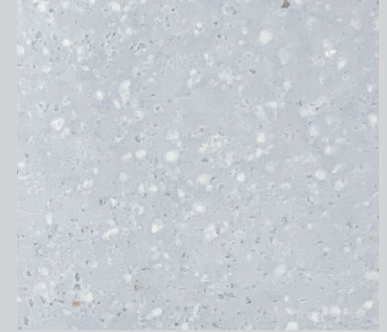
1200/109 - Natural



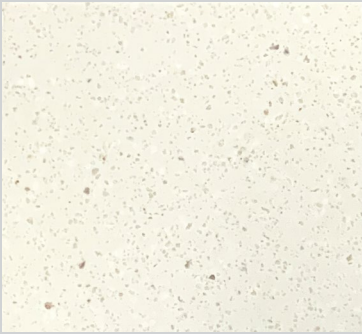
1200/112 - Minerals



1200/115 - Bamboo



1200/118 - Ice



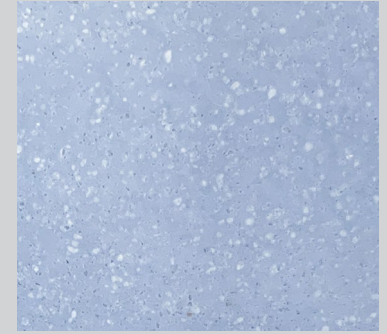
1200/110 - Porcelain



1200/113 - Stone



1200/116 - Leaf



1200/119 - Cobalt



1200/111 - Pyramid  
+Arena Additives



1200/114 - Clay  
+Arena Additives



1200/117 - Energy  
+Arena Additives



1200/120 - Oasis  
+Arena Additives

**PAINTS,** TECHNIQUES  
TECHNOLOGY AND **DESIGN**

[Designerpolishedplaster.com](http://Designerpolishedplaster.com)

**PITTED**

HONED LIMESTONE

1200/122 - Dust





1200/00 - White Smoke



1200/122 - Dust



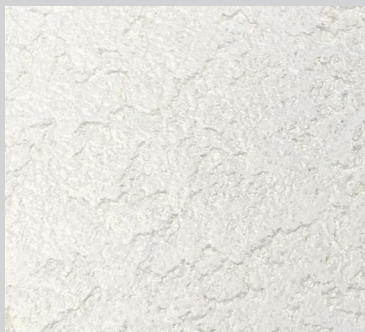
1200/125 - Trim



1200/123 - Raw



1200/126 - Accent



1200/00 - Golden W  
+Metallic Additives



1200/121 - Lime  
+Metallic Additives



1200/124 - Soil  
+Metallic Additives



1200/127 - Mica  
+Metallic Additives

**PAINTS,** TECHNIQUES  
TECHNOLOGY AND **DESIGN**

[Designerpolishedplaster.com](http://Designerpolishedplaster.com)

# **TRAVERTINE**

SPRINGS STONE







1200/128 - Neutral



1200/131 - Sand



1200/134 - Shadow



1200/132 - Desert



1200/135 - Echo



1200/129 - Silence  
+Metallic Additives



1200/130 - Wood  
+Metallic Additives



1200/133 - Golden  
+Metallic Additives



1200/136 - Magnet  
+Metallic Additives (Dragged Effect)

**PAINTS,** TECHNIQUES  
TECHNOLOGY AND **DESIGN**

[Designerpolishedplaster.com](http://Designerpolishedplaster.com)

**MARMORINO**

VENETIAN STYLE

1300/05 - Loft





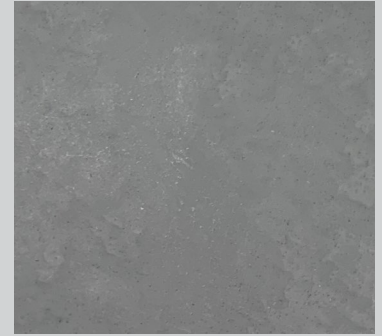
1300/01 - Universal



1300/04 - Element



1300/07 - Inox



1300/10 - Refined



1300/02 - Urban



1300/05 - Loft



1300/08 - Foil



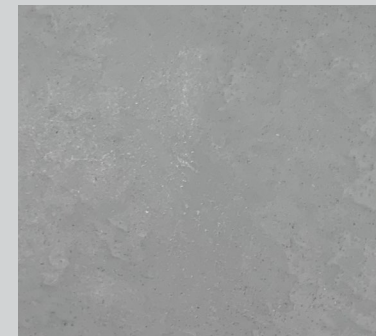
1300/11 - Iron



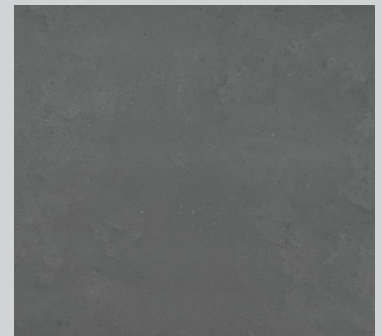
1300/03 - Fossil



1300/06 - Cloudy



1300/09 - Anchor



1300/12 - Tiles

**PAINTS,** TECHNIQUES  
TECHNOLOGY AND **DESIGN**

[Designerpolishedplaster.com](http://Designerpolishedplaster.com)

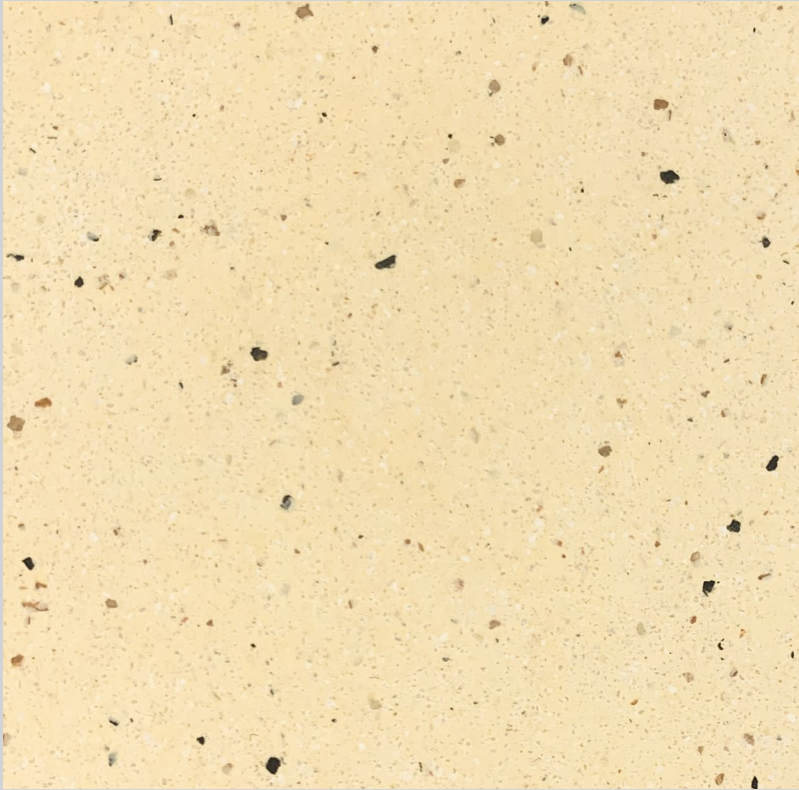
# **TERRAZZO GOLD RUSH**

Marble Chippings

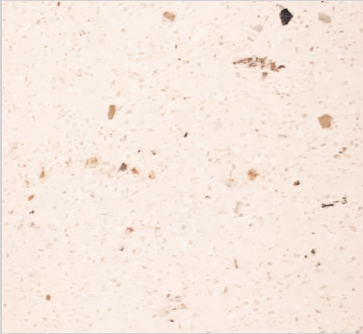
1200/141 - Clay Dust



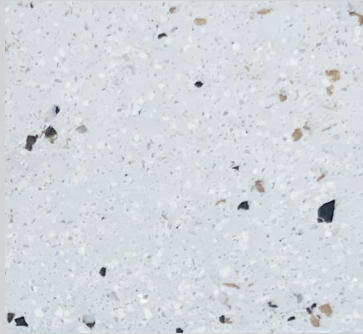




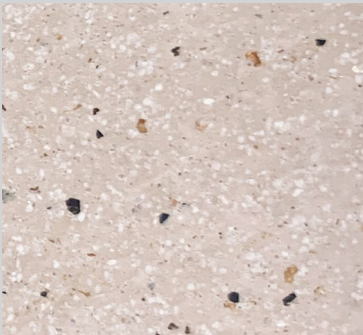
1200/137 - Ancient



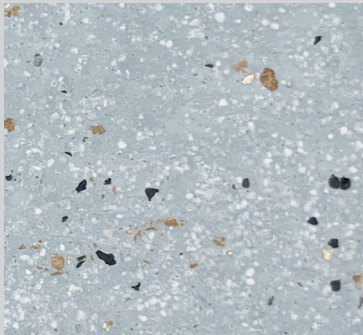
1200/140 - Translucent



1200/143 - Reflection



1200/141 - Clay Dust



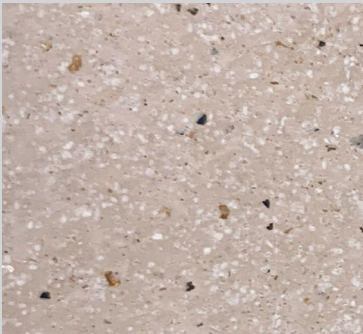
1200/144 - Recycled



1200/138 - Sandy



1200/139 - Cream



1200/142 - Rustic



1200/145 - Bench

**PAINTS,** TECHNIQUES  
TECHNOLOGY AND **DESIGN**

[Designerpolishedplaster.com](http://Designerpolishedplaster.com)

**TADELAKT**

TRADITIONAL CRAFT

1400/07 - Grassland





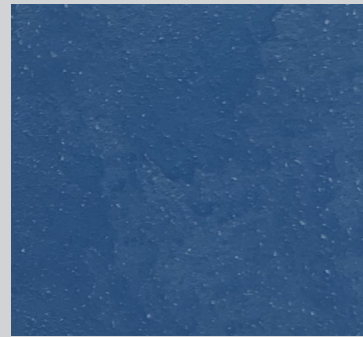
1400/01 - Tan



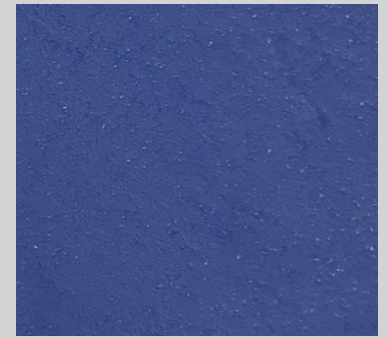
1400/04 - Neon



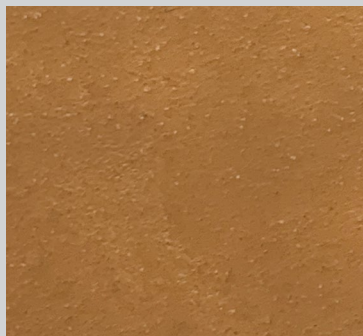
1400/07 - Grassland



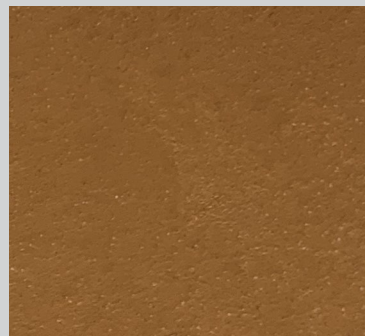
1400/05 - Majestic



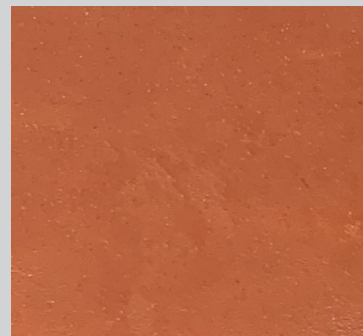
1400/08 - Lavender



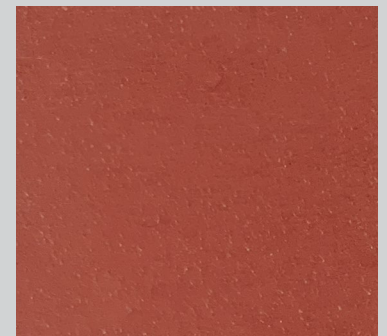
1400/02 - Alert



1400/03 - Sunny



1400/06 - Heat



1400/09 - Royal

**PAINTS,** TECHNIQUES  
TECHNOLOGY AND **DESIGN**

[Designerpolishedplaster.com](http://Designerpolishedplaster.com)

**BESPOKE**

TAILOR MADE STONES

1300/10 - Refined  
Slate



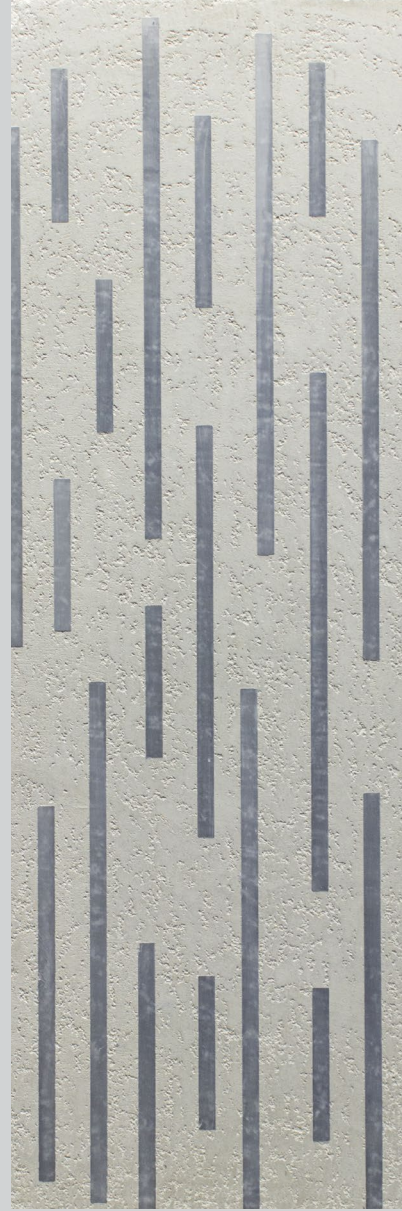




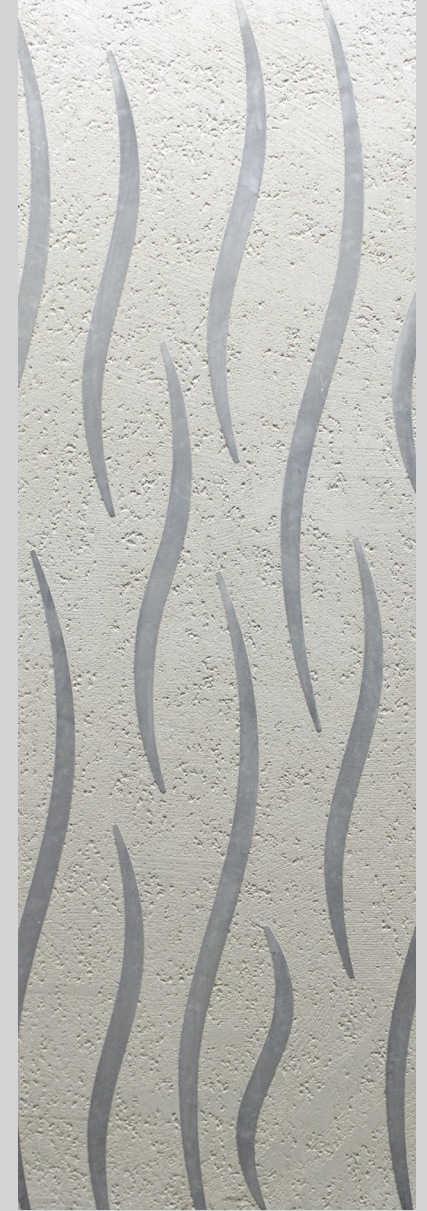
1200/125 - Trim  
Chaos



1200/135 - Echo  
Momentum



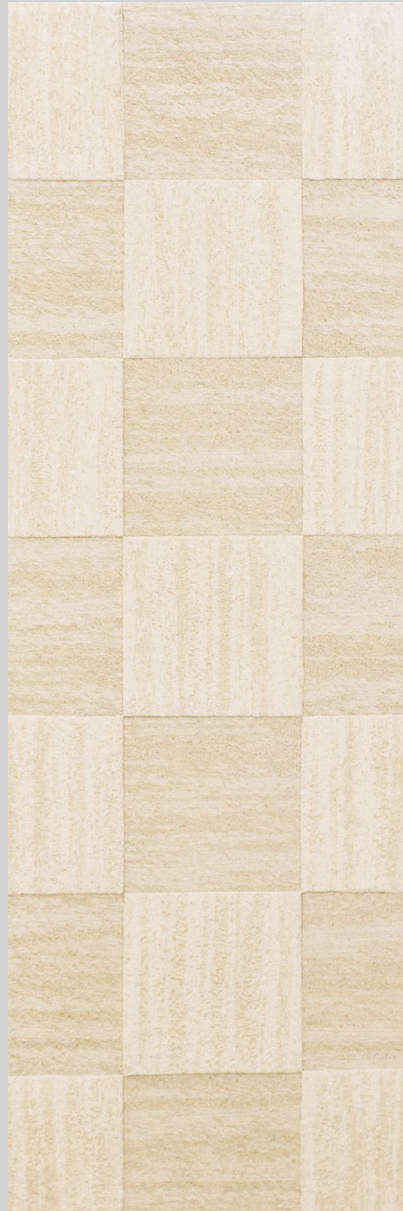
1200/126 - Accent  
Blackwood



1200/105 - Cement  
Wavy



**1200/110 - Porcelain  
Milestones**



**1200/132 - Desert  
On The Corner**



**1200/132 - Desert  
Rods**



**1200/113 - Stone  
Earth Tone**

1200/113 - Stone





# KEY FEATURES

## DESCRIPTION

Colortek's Designer Plaster range is a natural, environmentally friendly material used for internal and external works. Depending on the product, the range comes in paste and powder forms, each providing a unique aesthetic look.

### Polished Plaster

- Polished Plaster Paste (25 Kg)
- Polished Plaster Filler (powder form) (18 Kg)

### Marmorino

- Marmorino F (25 Kg)
- Marmorino G (5 Kg or 25Kg)

### Tadelakt

- Paste (5 Kg or 25 Kg)

### Marble Chips

- Powder (6 Kg)

### Terrazzo Gold Rush

- Caju, Carrara, Anthracite + Diamond (300 g)

### Arena

- BP, GP & YP (700 g)



#### INTERIOR - EXTERIOR

Protective coating system with UV and harsh elements resistance for interior and exterior surfaces.



#### WATER-BASED

Water-based coating compliant with VOC regulations



#### WATER RESISTANT

Provides a washable surface that can be easily cleaned.



#### VAPOR PERMEABLE

Allows moisture to evaporate and the surface to breathe.



#### MOLD & STAIN RESISTANT

Prevents the growth of fungi, and inhibits stains from penetrating the surface.



#### SOUND ABSORPTION

Contributes to sound absorption.



#### EXCELLENT ADHESION

Excellent adhesion to properly primed and prepared surfaces.



#### LOW ODOR

No toxic chemicals intake during application.



#### ABRASION RESISTANT

Prevents the surface from wearing down due to rubbing or friction.



#### TINTABLE FORMULA

Wide range of colors achievable with Colortek tinting systems.

# SMOOTH EFFECT

Reference	Additives	Highlight	Protection
1200/00 - White Smoke	—	—	Decorator Varnish Flat
1200/101 - Powder	—	—	Decorator Varnish Flat
1200/102 - Render	—	—	Decorator Varnish Flat
1200/103 - Gypsum	—	—	Decorator Varnish Flat
1200/104 - Plaster	—	—	Decorator Varnish Flat
1200/105 - Cement	—	—	Decorator Varnish Flat
1200/106 - Mortar	—	—	Decorator Varnish Flat
1200/107 - Blocks	—	—	Decorator Varnish Flat
1200/108 - Polished	—	—	Decorator Varnish Flat
1200/109 - Natural	—	—	Decorator Varnish Flat
1200/110 - Porcelain	—	—	Decorator Varnish Flat
1200/111 - Pyramid	Arena BP & Arena YP	—	Decorator Varnish Flat
1200/112 - Minerals	—	—	Decorator Varnish Flat
1200/113 - Stone	—	—	Decorator Varnish Flat
1200/114 - Clay	Arena YP	—	Decorator Varnish Flat
1200/115 - Bamboo	—	—	Decorator Varnish Flat
1200/116 - Leaf	—	—	Decorator Varnish Flat
1200/117 - Energy	Arena GP	—	Decorator Varnish Flat
1200/118 - Ice	—	—	Decorator Varnish Flat
1200/119 - Cobalt	—	—	Decorator Varnish Flat
1200/120 - Oasis	Arena BP	—	Decorator Varnish Flat

# PITTED EFFECT

Reference	Additives	Highlight	Protection
1200/00 - White Smoke	Marble Chips	—	Decorator Varnish Flat
1200/00 - Golden W	Marble Chips	Metallo Flash Gold	—
1200/121 - Lime	Marble Chips	Metallo Flash Gold	—
1200/122 - Dust	Marble Chips	—	Decorator Varnish Flat
1200/123 - Raw	Marble Chips	—	Decorator Varnish Flat
1200/124 - Soil	Marble Chips	Orinhu 727/55 + Scumble Walnut	—
1200/125 - Trim	Marble Chips	—	Decorator Varnish Flat
1200/126 - Accent	Marble Chips	—	Decorator Varnish Flat
1200/127 - Mica	Marble Chips	Metallo Doré	—

# TRAVERTINE EFFECT

Reference	Additives	Highlight	Protection
1200/128 - Neutral	Marble Chips	—	Decorator Varnish Flat
1200/129 - Silence	Marble Chips	Metallo Roman Silver	—
1200/130 - Wood	Marble Chips	Metallo Flash Gold + Scumble Raw Umber	—
1200/131 - Sand	Marble Chips	—	Decorator Varnish Flat
1200/132 - Desert	Marble Chips	—	Decorator Varnish Flat
1200/133 - Golden	Marble Chips	Metallo Flash Gold + Scumble Walnut	—
1200/134 - Shadow	Marble Chips	—	Decorator Varnish Flat
1200/135 - Echo	Marble Chips	—	Decorator Varnish Flat
1200/136 - Magnet	Marble Chips	Metallo Roman Silver + Scumble Walnut	—

# TERRAZZO GOLD RUSH **EFFECT**

Reference	Additives	Highlight	Protection
1200/137 - Ancient	Anthracite, Caju & Carrara	—	Decorator Varnish Flat
1200/138 - Sandy	Anthracite, Caju & Carrara	—	Decorator Varnish Flat
1200/139 - Cream	Anthracite, Caju & Carrara	—	Decorator Varnish Flat
1200/140 - Translucent	Anthracite, Caju & Carrara	—	Decorator Varnish Flat
1200/141 - Clay Dust	Anthracite, Caju & Carrara	—	Decorator Varnish Flat
1200/142 - Rustic	Anthracite, Caju & Carrara	—	Decorator Varnish Flat
1200/143 - Reflection	Anthracite, Caju & Carrara	—	Decorator Varnish Flat
1200/144 - Recycled	Anthracite, Caju & Carrara	—	Decorator Varnish Flat
1200/145 - Bench	Anthracite, Caju & Carrara	—	Decorator Varnish Flat

# TADELAKT **EFFECT**

Reference	Additives	Highlight	Protection
1400/01 - Tan	—	—	Polished Wax
1400/02 - Alert	—	—	Polished Wax
1400/03 - Sunny	—	—	Polished Wax
1400/04 - Neon	—	—	Polished Wax
1400/05 - Majestic	—	—	Polished Wax
1400/06 - Heat	—	—	Polished Wax
1400/07 - Grassland	—	—	Polished Wax
1400/08 - Lavender	—	—	Polished Wax
1400/09 - Royal	—	—	Polished Wax



# MARMORINO G EFFECT

Reference	Additives	Highlight	Protection
1300/01 - Universal	—	—	Wax
1300/02 - Urban	—	—	Wax
1300/03 - Fossil	—	—	Wax
1300/04 - Element	—	—	Wax
1300/05 - Loft	—	—	Wax
1300/06 - Cloudy	—	—	Wax
1300/07 - Inox	—	—	Wax
1300/08 - Foil	—	—	Wax
1300/09 - Anchor	—	—	Wax
1300/10 - Refined	—	—	Wax
1300/11 - Iron	—	—	Wax
1300/12 - Tiles	—	—	Wax

PLASTER



# COLORTEK®

TECHNOLOGY IN ALL ITS COLORS



[www.colortek.eu](http://www.colortek.eu)  
[info@colortek.eu](mailto:info@colortek.eu)

  [colortekpaints](#)