

BACA®

World of Pearls



500/08 - Nestor

IT 149-3

EN

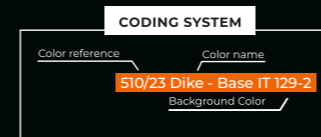
BACA®

Baca® is an inspiring pearly smooth decorative finish offering extraordinary reflective accents. Its range of 73 shades will help you create the perfect color scheme.

Technical Name
Still luminescent Finish.

Key Properties

- Unleaded
- Water Based
- Washable (after full curing)
- Non-flammable
- Odorless
- 6 attractive base colors (500, 506, 507, 508, 509 or 510)
- Very low VOC content in compliance with:
 - EU directive 2010/79/EU
 - French decree No: 2011-321



Pack Size

- 1 US Quart - (0.85 kg)
- 1 US Gallon - (3.4 kg)

Recommended Uses

Internal applications, Baca® can be only applied in exterior conditions when top coated with Decorator Varnish Range.

Type of Substrate

Plaster, embossed wall coverings, gypsum board, concrete, cement rendering, brick work & block work.

Finish

Satin Metallic Finish.

Coverage

Approximately 12 - 14 m²/kg/coat - 3 coats required



Drying Time

15 minutes to 1 hour depending on temperature and humidity.

Thinner

No thinning required.



Preparation

All surfaces to be painted should be clean, dry and free from loose & flaking material. Rub down & rinse. Prime the substrate with the appropriate Colortek® Co.Acryl or CIA base.

Instructions

Baca® is applied with a roller in three coats - Before the final coat dries, exert a slight circular movement pressure using a trowel or spatula in continuous motion to reach the desired aesthetic effect.

Do not apply at temperatures below 5°C or when rain is expected.

Recommendation

Achieving the correct lighting is critical to the success of Baca® walls. To get the best results it is important to light the surface to achieve the optimum pigment sparkle.

Cleaning

Remove as much product as possible from application equipment before cleaning. Clean equipment immediately after use with warm soapy water & rinse thoroughly.

Do not empty product into drains or watercourses.

Additional Info

Product batches are tested using a quality control system and are ISO: 9001:2008 certified.

Transportation & Storage

Care should be taken to avoid spillage. Protect from frost & humidity.

FR

BACA®

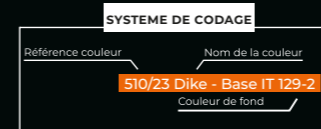
Baca® est une peinture décorative acrylique aux nuances réfléchissantes et changeantes. Sa gamme de 73 teintes vous aidera à créer une harmonie parfaite de couleurs.

Nom Technique

Effet satiné lumineux.

Propriétés

- Ne contient pas de plomb
- Produit à base d'eau
- Lavable
- Inodore
- 6 bases (500, 506, 507, 508, 509 ou 510)
- Faible teneur en COV conformément aux:
 - Directive EU directive 2010/79/EU
 - Decret Français No: 2011-321



Emballage

- 1 US Quart - (0.85 kg)
- 1 US Gallon - (3.4 kg)

Usage Recommandé

Application en intérieur, Baca® peut être uniquement appliqué en extérieur lorsqu'il est recouvert avec la couche de protection Decorator Varnish Range.

Types de Support

Enduit, ciment, plâtre et plaque de plâtre, anciennes peintures usuelles absorbantes, etc.

Finition

Finition satinée métallique.



Rendement

Environ 12 - 14 m² / kg / couche - 3 couches requises

Temps de séchage

Environ 15 à 60 minutes en fonction des conditions climatiques et de la température ambiante.

Diluant

Aucune dilution requise.



Préparation du Support

Le support doit être dur, propre, sain, sec, cohésif et libre de toute matière telle que salpêtre, mousse, lichen ou autres microorganismes pouvant empêcher l'adhérence du produit sur le support. Dans un premier temps, appliquer la couleur appropriée de la sous-couche Colortek® Co.Acryl ou famille CIA.

Application

Baca® est appliqué à l'aide d'un rouleau en 3 couches. Laisser sécher la surface avant d'appliquer la couche suivant. Pour obtenir l'effet décoratif désiré, exercez à l'aide d'une spatule un mouvement circulaire continue avant que la dernière couche ne sèche.

Ne pas appliquer à une température ambiante inférieure à 5°C ou par temps pluvieux.

Recommandation

Il est recommandé d'installer un système d'illumination approprié afin de mettre en valeur l'effet nacré du Baca®.

Nettoyage des Outils

Éliminer autant que possible le reste du produit de la surface des outils. Nettoyer ces derniers en les frottant vigoureusement avec de l'eau et du savon.

Ne pas vider les restes du produit dans égouts ou les voies d'eau.

Information Additionnelle

Le processus de fabrication de Baca® est soumis au plus stricts contrôles de qualité certifiés conformes au standard ISO 9001 : 2008

Stocker le produit à l'abri de l'humidité et des températures de gel.



COLORTEK®

TECHNOLOGY IN ALL ITS COLORS



www.colortek.eu
info@colortek.eu





510/01 - Bia Base IT 94-2



500/00 - Jupiter Base White



500/38 - Arke Base IT 8-1



500/54 - Horne Base IT 39-5



500/65 - Lethe Base IT 118-2



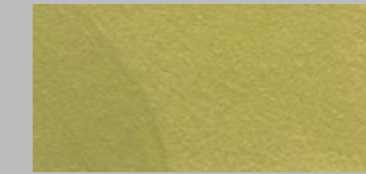
500/74 - Ersa Base IT 150-1



500/82 - Attis Base IT 34-5



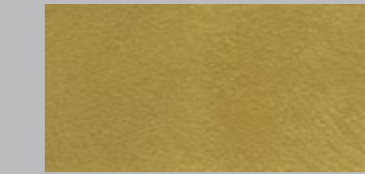
500/90 - Aceso Base IT 148-6



509/97 - Scylla Base IT 130-5



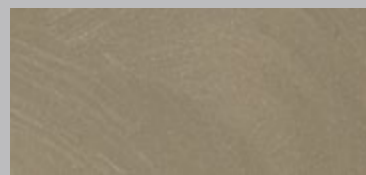
509/103 - Ceranon Base R17



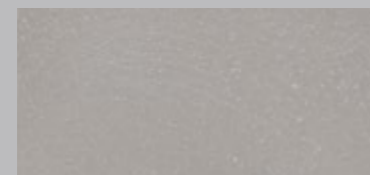
509/109 - Clio Base R17



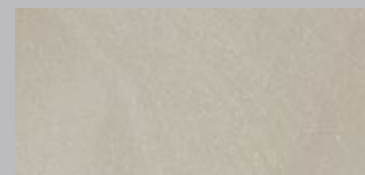
510/00 - Pallas Base IT 91-2



510/02 - Dolos Base IT 94-2



500/16 - Minos Base IT 35-2



500/43 - Sema Base IT 8-1



500/56 - Geras Base IT 39-5



500/67 - Mania Base IT 39-5



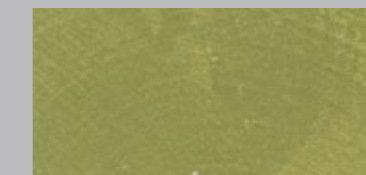
500/75 - Ladon Base IT 124-2



500/84 - Karpo Base IT 34-5



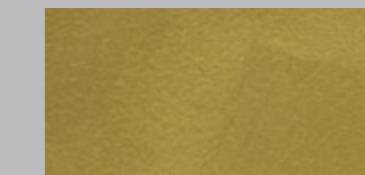
500/92 - Epione Base IT 148-6



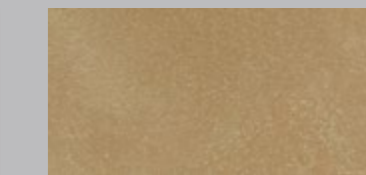
509/98 - Proteus Base IT 134-4



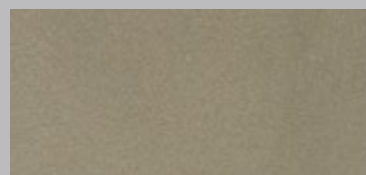
509/104 - Circe Base R17



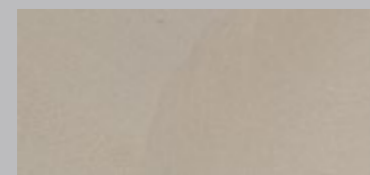
509/110 - Erato Base R17



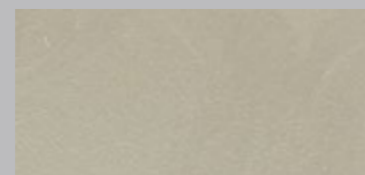
510/113 - Nete Base IT 91-2



510/04 - Ate Base IT 128-7



500/22 - Mormo Base IT 51-7



500/45 - Ceto Base IT 124-1



500/58 - Gelos Base IT 119-6



500/68 - Lyssa Base IT 118-1



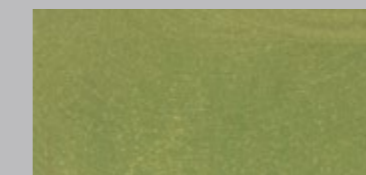
500/76 - Aetna Base IT 124-2



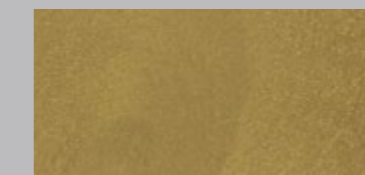
500/85 - Cabeiri Base IT 146-2



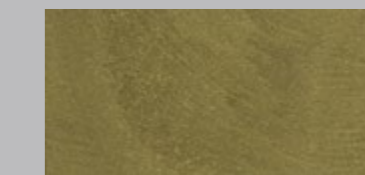
500/93 - Anius Base IT 146-6



509/99 - Horae Base IT 134-4



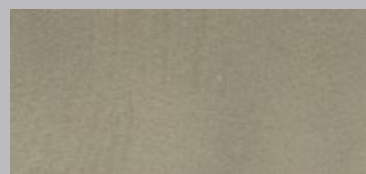
509/105 - Cres Base R17



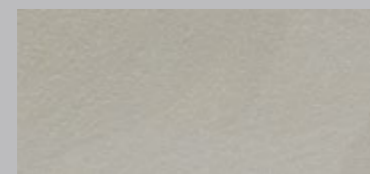
509/111 - Niobe Base IT R17



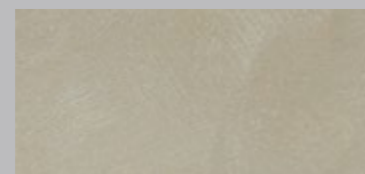
507/114 - Iro Base IT 163-7



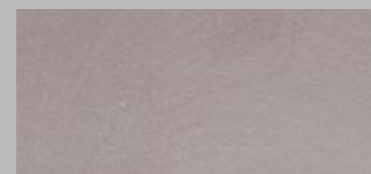
510/23 - Dike Base IT 129-2



500/24 - Styx Base IT 33-2



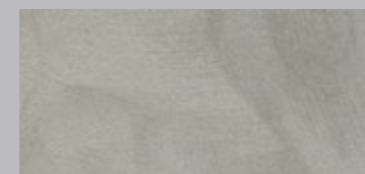
500/47 - Nyx Base IT 37-3



500/61 - Eris Base IT 119-6



500/70 - Moros Base IT 118-1



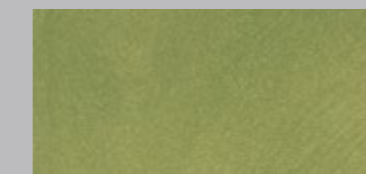
500/78 - Auxo Base IT 148-6



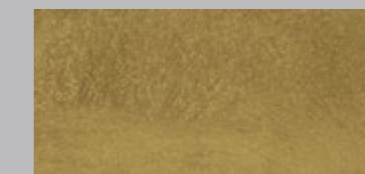
500/86 - Methe Base IT 144-5



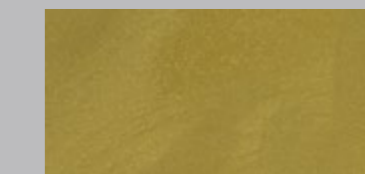
500/94 - Carya Base IT 113-6



509/100 - Metope Base IT 134-4



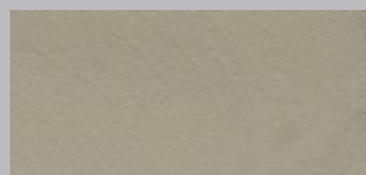
509/106 - Enyo Base R17



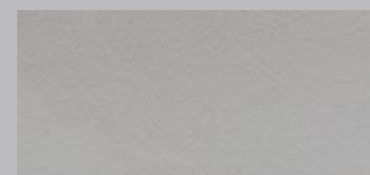
509/112 - Myles Base R17



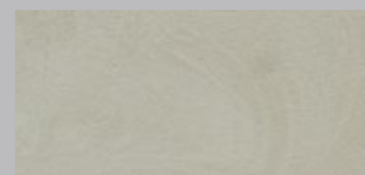
507/115 - Medea Base IT 163-7



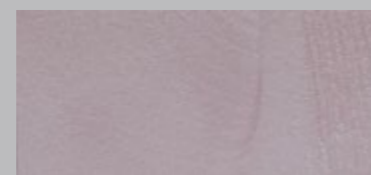
510/05 - Notus Base IT 126-3



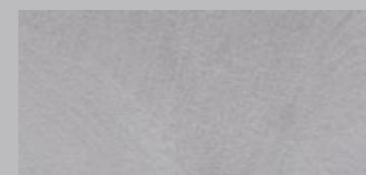
500/30 - Brizo Base IT 149-2



500/50 Poros Base IT 37-3



500/62 - Elpis Base IT 119-6



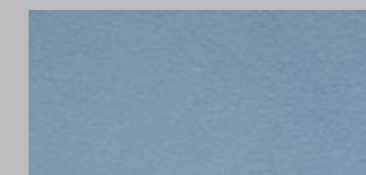
500/72 - PHEME Base IT 118-1



500/79 - Meliae Base IT 148-5



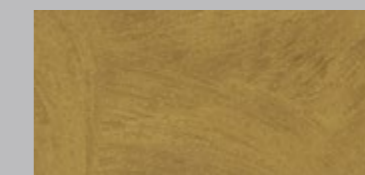
500/87 - Potamoi Base IT 145-3



500/95 - Mopsus Base IT 75-3



509/101 - Triton Base IT 134-4



509/107 - Aoide Base R17



509/00 - Artemis Base R17



507/00 - Peseidor Base IT 163-7



510/06 - Zelos Base IT 126-3



500/32 - Aeolus Base IT 126-5



500/52 - Oizys Base IT 126-5



500/64 - Loke Base IT 119-6



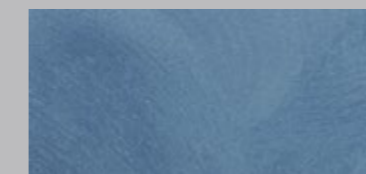
500/73 - Soter Base IT 118-3



500/81 - Echo Base IT 148-5



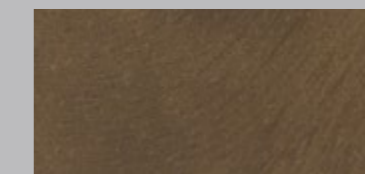
500/89 - Carme Base IT 170-3



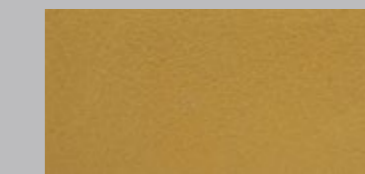
500/96 - Hydros Base IT 75-4



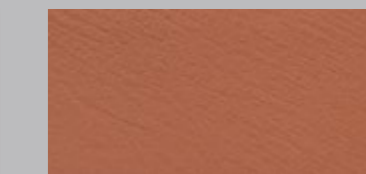
509/102 - Aurai Base IT 134-4



509/108 - Helen Base R17



508/00 - Aphrodite Base R17



506/00 - Hermes Base R94