

DEEPC[®]

SEAMLESS CARPET FLOORING SYSTEM



colortek.eu
info@colortek.eu



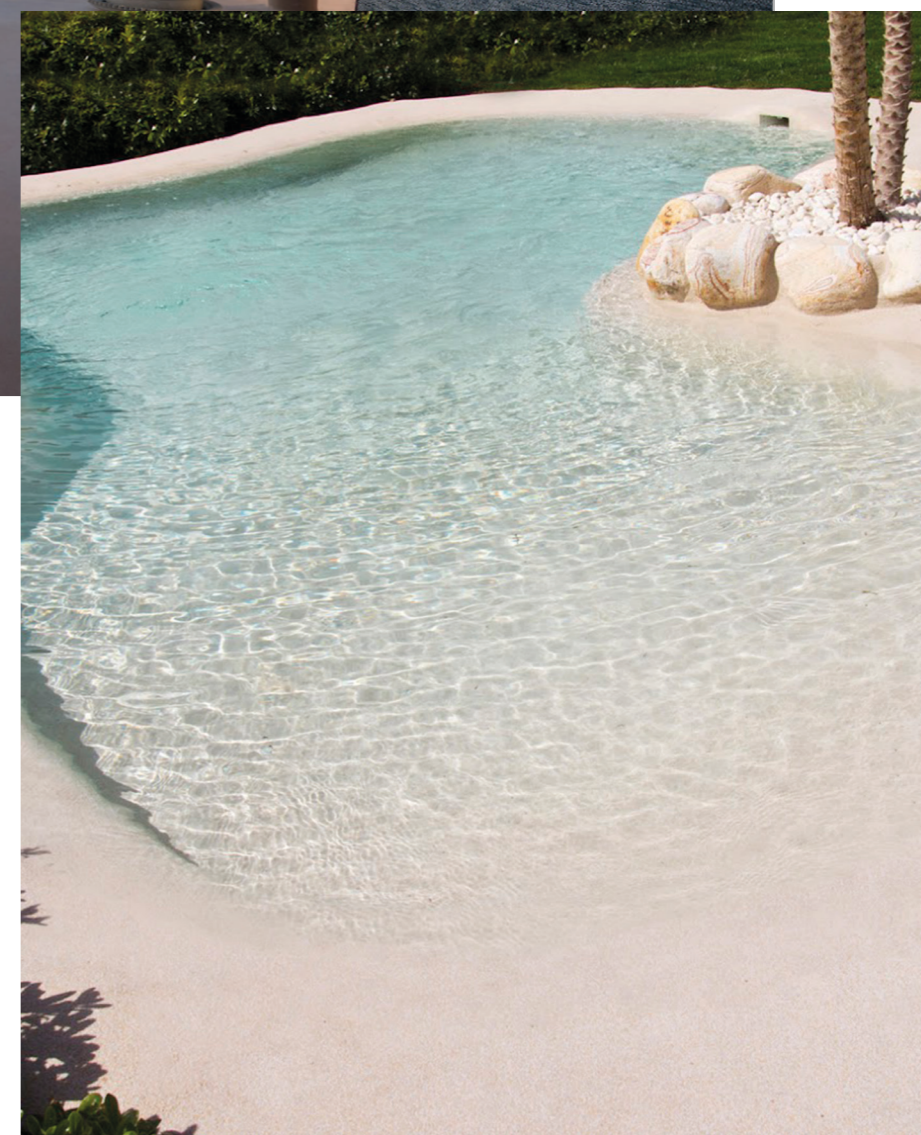
Seamless Quartz and Marble Carpet Flooring

colortek.eu

info@colortek.eu



Almaza Bay by TDF - Cairo - Egypt



INTRODUCTION

DeepC® is an innovative modern flooring system that is characterized with a versatility like no other, an unprecedented resistance to direct sunlight, and a bright, attractive and easy to clean surface that is both durable and chemically resistant.

DeepC® gives out a natural and ornamental feel to your indoor and outdoor areas, as it can be used in both elaborate and minimal interior designs while being suitable as well for submerged areas.

Whether you are looking to aesthetically improve the appearance of your terrace, sauna, swimming pool, playground or living room among many others, DeepC®, available in different colors and textures will surely do the magic.

DeepC® Colortek, Wall & Floor Fashion and the Colortek drop symbol are registered trademarks.
©2022



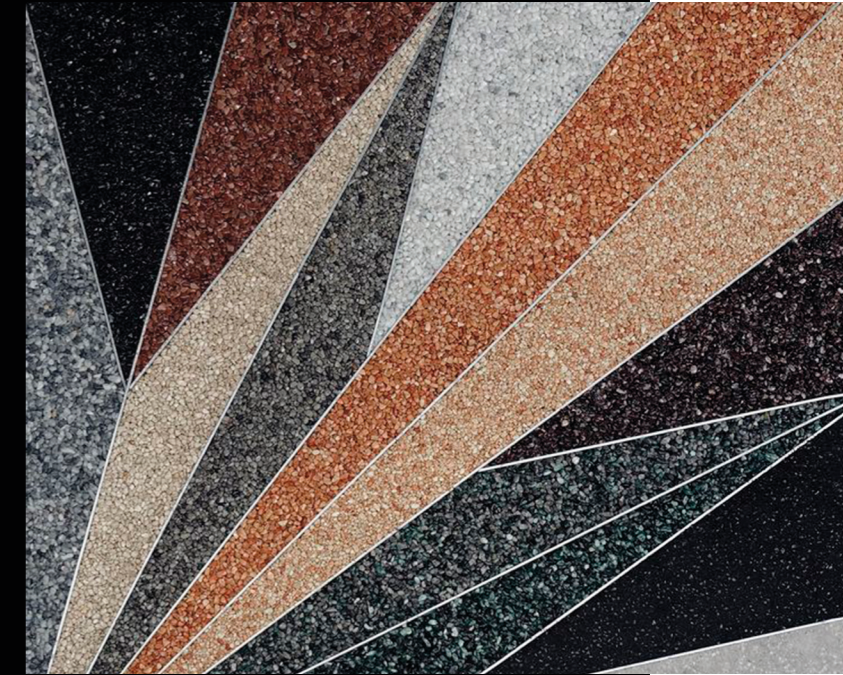
DEEPC[®] CHARACTERISTICS

1

Innovative and green design material

DeepC[®] is an inventive seamless quartz and marble carpet flooring, that instigates a smart and decorative atmosphere in any space, without any environmental impact. Applicable on a wide variety of substrates (after required treatment), DeepC[®] is composed of very low VOC components and provides non-slip and antibacterial properties.

DeepC[®] meets the most stringent and international architectural sustainability requirements for adaptability, transformation, and change.



2

Utility, Durability and High Performance

DeepC[®] can be applied on horizontal surfaces. Its extreme high abrasion and compression resistance, make it the ideal choice to renovate your exterior and interior spaces, while reducing the waste from normal restoration works to a minimum.

Colortek's DeepC[®] is equipped with features that keep the surface beathable while preventing water from penetrating into the substrate.



No more dull-looking floors.

DeepC[®] will certainly change the way you perceive flooring design. Its unparalleled versatility makes it the optimal aesthetic floor-carpet solution to maintain a vibrant ambiance, regardless of the season!

**"THE BEST DESIGN PROJECTS
ARE THE ONES WHERE PEOPLE
BROKE THE RULES."**

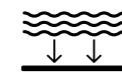
- Nate Berkus

KEY FEATURES



Recommended For

Swimming pools, car parks, garage squares, parks and public areas, sports playgrounds and arenas, driveways, walkways, terraces, verandas, balconies, living rooms, hallways, and others.



Suitable for permanent immersion in water



High durability against chemical and mechanical stress



Resistant to UV-radiation



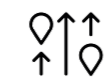
Ready to use



Penetrates deeply



Long-lasting protection



Does not trap moisture



Alkaline stable



For concrete, masonry and floors

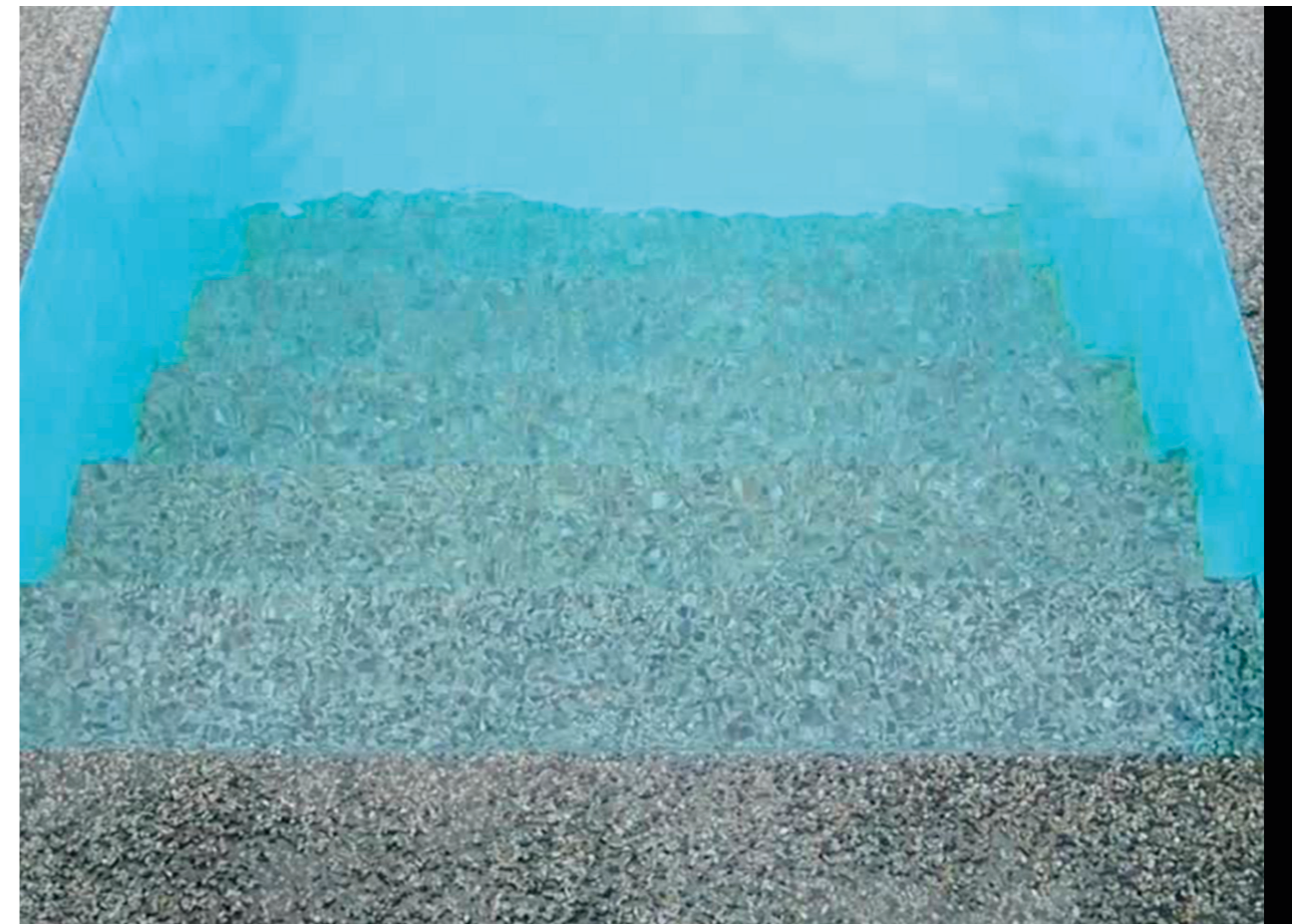


Resistant to aging agents

Everything you need to create a realistic beach feel at home

DeepC® can be applied as a flooring system, irrespective of the base materials composition, shapes or dimension.

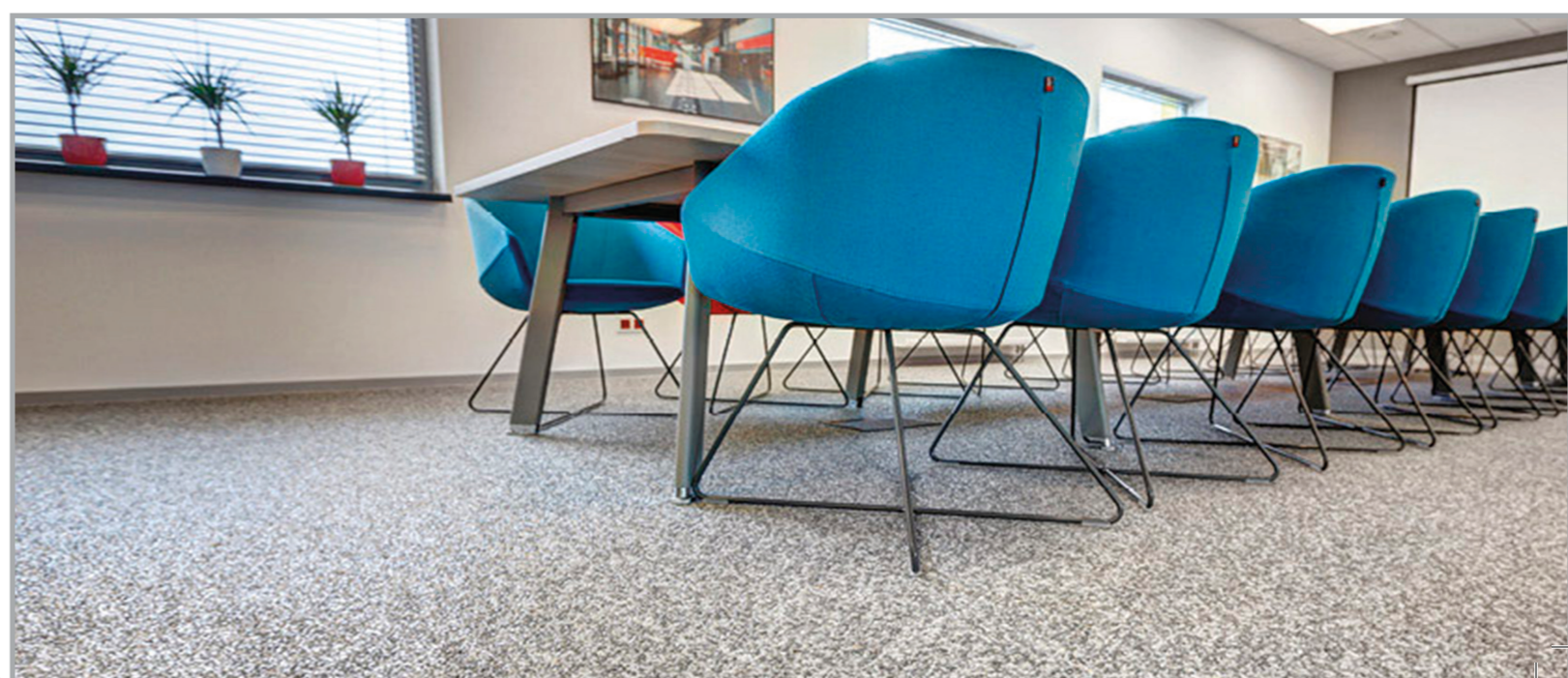
The fact that DeepC® is also a UV stable, non-yellowing, weather stable, alkali and chemicals resistant product, makes it a wide-ranging and multi-usage product.



DEEPC® DESIGNER FINISHES



"The details are not the details.
They make the design."
~ Charles Eames



COLORS COLLECTION

Marble Granules



53021



53631



53601



53011



53061



53161



53071



53141



53101



53121

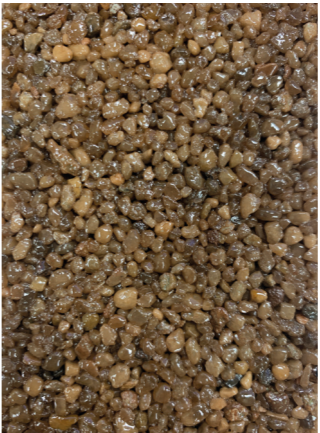


53571

Colored Quartz



51361



51121



51861



51621



51401



51381



51061



51241

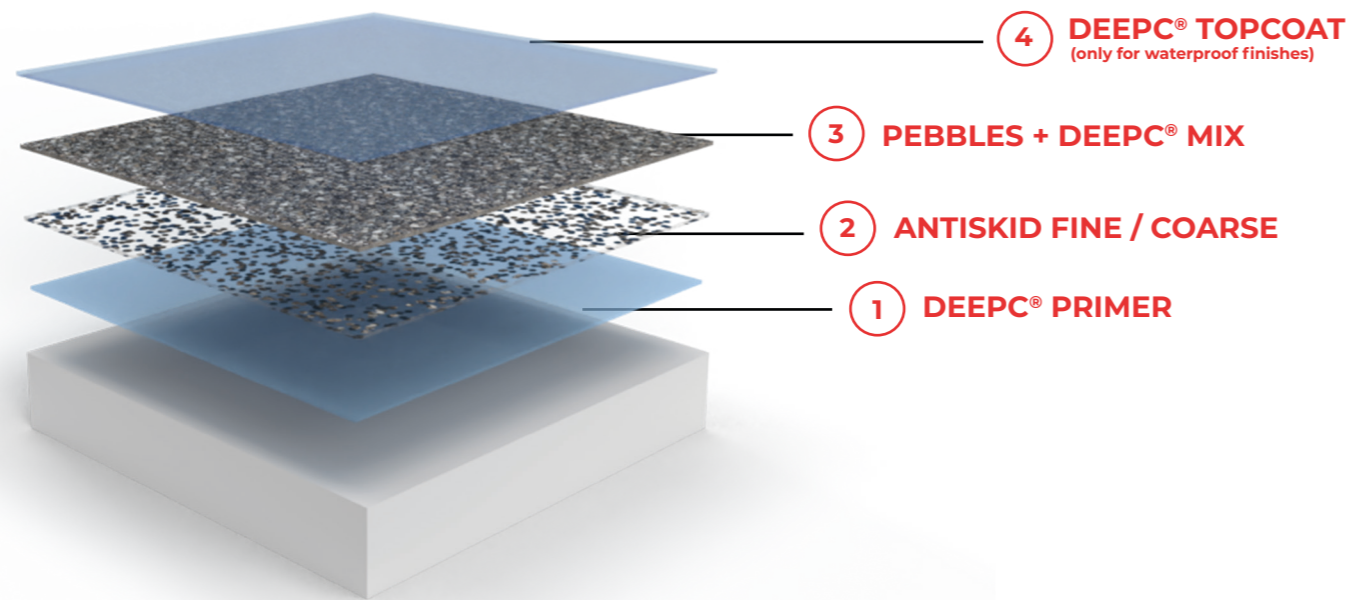


5300 SF





PREPARATION



SURFACE PREPARATION

The substrate must be structurally sound and clean of oil, grease, dirt, wax, curing compounds, efflorescence, paints, previous sealers, adhesives and other contaminants that might interfere with the penetration of the sealer. Make sure to repair all cracks, and other surface imperfections with the adequate material before application.

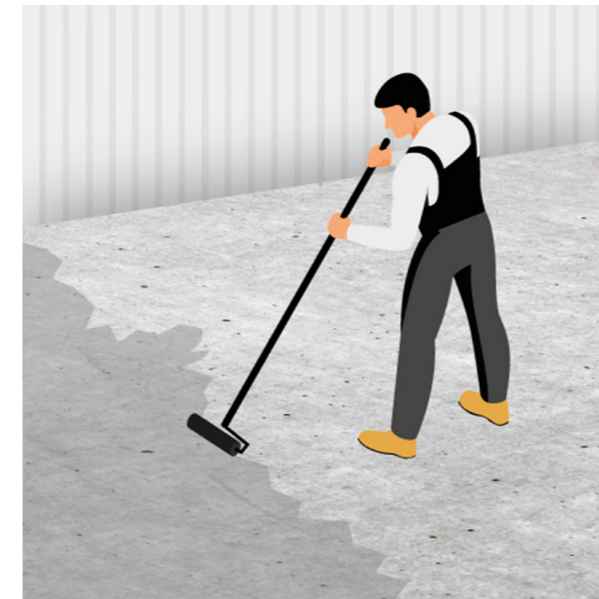
PREPARATION OF THE DEEPC® MIX

In a clean container that contains DeepC® Granules, add 6% by weight of the DeepC® mix. Mix the base with the granules until a uniform, paste like shape is achieved. The consistency of the aggregates depends on their granulometry. Aggregates with smaller granulometry, will require more quantity of the DeepC® mix. In all cases, ensure the complete saturation of the granules.

PREPARATION OF THE DEEPC® TOPCOAT

Mix the hardener part of the topcoat with the base part. Use directly afterwards. Do not divide or use half of the DeepC® topcoat product. Once the pack has been opened, it should not be closed back. You should be committed to using the product.

APPLICATION



STEP 1. Using a roller, prime the system with the DeepC® Primer. Make sure that it is well covered. Leave it to dry for 2-3 hours. Re-coat again



STEP 2. Immediately add by sprinkling the associated silica granules and leave it for 24 hours. After 24 hours, clean the extra silica using a dry brush.



STEP 3. Prepare the DeepC® mix. Then, using a trowel, spread the prepared DeepC® mix over the primed surface. Leave it for 24 hours for full curing.



STEP 4. After the full curing of the DeepC® mix, mix the DeepC® topcoat components. Then, apply using a roller. Leave it for 3 days for full curing. The system is ready for use.

PACKS SIZES

	Pack S (kg)	Pack S (L)	Pack L (Kg)	Pack L (L)
DeepC® Primer	3.10 Kg	3.4 L	15.50 Kg	17.03 L
DeepC® Mix	3 Kg	3.13 L	—	—
DeepC® Topcoat Gloss Base	2.23 Kg	2.12 L	11.15 Kg	10.62 L
DeepC® Topcoat Low Gloss Base	3.44 Kg	3.4 L	17.20 Kg	17.03 L
DeepC® Topcoat Hardener	0.45 Kg	0.42 L	2.25 Kg	2.12 L
Antiskide Fine/ coarse	0.75 Kg	—	25 Kg	—



COLORTEK DEEPC® RUBBER ADDITIVES

Colortek offers you 24 unique colors of rubber additives that are specific to be used with DeepC® when applied in surfaces that require maximum safety especially spaces where sport activities take place and playgrounds where kids are prone to falling down and hurting themselves.



PHYSICAL PROPERTIES

% Volume solids	50%
Dilution	None
Consumption	10 sq./ kg
E-modulus	69.5 N/mm ² according to DIN EN ISO 527
Tear resistance	56.9 N/mm according to DIN ISO 34, Method B
Elongation at break	90% after 2000h of accelerated aging (DIN EN ISO 4892-3, 400 MJ/m ²) DIN EN ISO 527
Tensile strength	40 N/mm ² after 2000h of accelerated aging (DIN EN ISO 4892-3, 400 MJ/m ²) DIN EN ISO 527
Gloss Retention	Good after 2000h of accelerated aging (DIN EN ISO 4892-3, 400 MJ/m ²) DIN EN ISO 527
Surface Chalking	No chalking after 2000h of accelerated aging (DIN EN ISO 4892-3, 400 MJ/m ²) DIN EN ISO 4628-6
Hardness (SHORE D Scale)	50 according to ASTM D 2240
Resistance to Water Pressure	No Leak (2m water column, 24h) according to DIN EN 1928
Hydrolysis	No significant elastomeric change (5% KOH, 7days cycle)
Service Temperature	-40°C to +90°C; Conditions: 20°C, 50% RH
Tack Free Time	6-8 Hours; Conditions: 20°C, 50% RH
Light Pedestrian Traffic Time	24 Hours; Conditions: 20°C, 50% RH
Curing time	7 days; Conditions: 20°C, 50% RH
Chemical Properties	Good resistance against detergents, seawater, chlorinated water, oils, and chemicals.

FREQUENTLY ASKED QUESTIONS & ANSWERS

Do your products delaminate and crack?

Our coats will not delaminate or crack independently. However, we are not responsible for engineering failure in the already existing concrete infrastructure. Colortek will not be held responsible for naturally occurring subfloor or substrate cracking.

Who will install the products?

Preparing your substrate is a crucial step toward your project's success. You should not create bypasses and shortcuts in the preparation process. Our network of professional installers is the answer for a safe and reliable installation.

Are your products environmentally friendly?

Toxic or flammable fumes won't be a problem during the mixing and installation process. Our products will not release harmful gases during installation. Please refer to the safety data sheet of each component for further details.

I have some cracks in my existing floor. Is that a problem?

All open cracks should be repaired including those in your expansion or "tool" joints.

Can I use Quartz Carpet over Radiant Heat?

Yes you can. Our DeepC[®] Mix is engineered to withstand exposure to high temperatures that might reach 90 degrees Celsius.

Can you see trowel marks in the finished floor?

The finish will be self-leveling. Which means that you will not see trowel marks.

Can I create patterns using various colors?

You can create your patterns and logos using different colors. Profiles can be installed in predetermined shapes prior to the application of DeepC[®] Quartz. This allows the installers to neatly apply different colors to different areas.

Do the stones feel sharp underfoot?

Our DeepC[®] stones are rounded and tumbled to provide safety and comfort for pedestrians. Thus, stones have no sharp edges or fissures. Actually, our quartz stones have a very soft feeling under foot.

How do I maintain my DeepC[®] floor?

You can clean your DeepC[®] floor using a mop, broom, or vacuum cleaner.

Can it be applied to Walls and Stairs?

Our DeepC[®] system can be applied vertically and horizontally. It can be applied on staircases. And to prevent wear in the case of stairs, an aluminium trim installation is recommended.

What happens if I need to repair my Quartz Carpet?

Repairing DeepC[®] could be done using an applicator. Kindly insist that your installer leaves a few square metres of extra stock on site. Repairs done at a later stage may be visible.

Is the floor resistant to acids and chlorinated water?

Yes, our floor is highly resistant to chlorinated water, salty water, or to the splash of chemicals. It also has good resistance to oils and detergents.

Can I use the same product around the pool and inside the pool?

Our product is designed to give a wide area of applications for an optimized use. You can use the system inside the pool, on the pool sides and in internal conditions.

I have high variations in the temperature between the day and the night, would that affect my system?

Variations in the temperature will not affect your system. The high build of solids in the system, paralleled with a high tensile strength and elongation at break will allow your system to go through different ranges of temperatures without losing its physical and chemical properties.

How long will it take so that the overall system is ready for use?

The overall installation time of our system is 5 days. After that, our system is ready for use.

How durable is DeepC[®] Quartz?

DeepC[®] quartz is extremely durable. It measures 8 on the Measure of Hardness scale (MOH), where a diamond measures 10. DeepC[®] quartz floors are impact and scratch resistant.