



IRIDESCENT FINISH



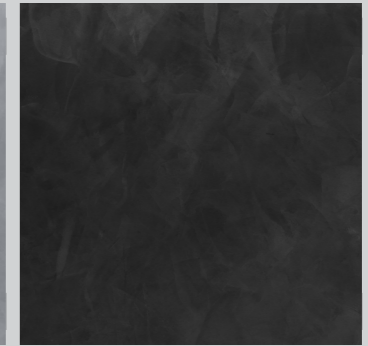
COLORTEK®



350 / 104 - Soie
172-1



350 / 146 - Vessel
139-4



360 / 00 - Obscure
R 10

ORO®

IRIDESCENT FINISH

Oro® is a decorative coating with a special lustrous silky finish, perfect for creating classic or modern atmospheres depending on the application technique used.

Technical Name

Iridescent effect.

Key Properties

- Unleaded
- Water Based
- Washable (after full curing)
- Enhanced resistance to flame spread
- Odorless
- 2 attractive base colors (350 & 360)
- Very low VOC content in compliance with:
 - . EU directive 2010/79/EU
 - . French decree No: 2011 - 321

Pack Size

- 1 US Quart - (1 kg)
- 1 US Gallon - (4 kg)

Recommended Uses

Interior application.

Type Of Substrate

Plaster, embossed wall coverings, gypsum board, concrete, cement rendering, brick work.

Finish

Velvet metallic finish.

Coverage

12-14m² / kg / coat - 2 coats required.

Drying Time

1/2 to 1 hour depending on temperature and humidity.

Thinner

No thinning required.



Preparation

All surfaces to be painted should be clean, dry and free from loose and flaking material. Rub down and rinse. Prime the substrate with the appropriate COLORTEK® CO.ACRYL or C1 Family.

Instructions

Stir well, apply Oro in an irregular manner, using an inox trowel until the surface is fully covered. Before the product dries, pass back over the surface by troweling it backwards and forwards in random direction to achieve the velvet effect. After full dry, apply a second coat in the same manner.

Do not apply at temperatures below 5° C or when rain is expected.

Recommendation

To obtain the optimum Oro® finish and bring out the special metallic finish in this product, proper lighting should be directed to the designed wall.

Cleaning

Remove as much product as possible from application equipment before cleaning. Clean equipment immediately after use with warm soapy water and rinse thoroughly.

Do not empty product into drains or watercourses.

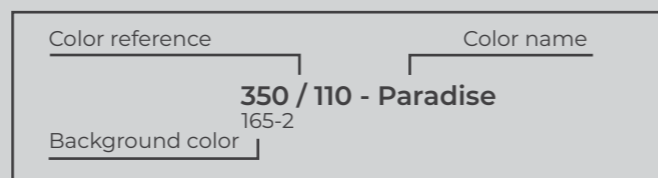
Additional Info

Product batches are tested using a quality control system and are ISO 9001 : 2008 certified .

Transportation & Storage

Care should be taken to avoid spillage. Protect from frost and humidity.

CODING SYSTEM



ORO®

EFFET IRISÉ

Oro® est une finition décorative ayant un aspect soyeux et souple au toucher qui se caractérise pas des effets irisés.

Nom Technique

Effet irisé.

Propriétés

- Ne contient pas de plomb
- Produit à base d'eau
- Lavable
- Résiste à la propagation des flammes
- Inodore
- 2 couleurs de base (350 & 360)
- Faible teneur en VOC conformément aux:
 - . Directive UE 2010/79/EU
 - . Décret Français N°: 2011 - 321

Emballage

- 1 US Quart - (1 kg)
- 1 US Gallon - (4 kg)

Usage Recommandé

Application intérieure.

Types de Support

Enduit, ciment, plâtre et plaque de plâtre, anciennes peintures usuelles absorbantes, etc.

Finition

Finition en velours métallisé.

Rendement

12 -14m² / kg / couche - 2 couches requises.

Temps de Séchage

Environ 1/2 à 1 heure en fonction des conditions climatiques et de la température ambiante.

Diluant

Aucune dilution requise.

Préparation du Support

Le support doit être dur, propre, sain, sec, cohésif et libre de toute matière telle que salpêtre, mousse, lichen ou autres microorganismes pouvant empêcher l'adhérence du produit sur le support. Dans un premier temps, appliquez la couleur appropriée de la sous-couche COLORTEK® CO.ACRYL ou Famille C1.

Application

Oro® est un produit prêt à l'emploi qui s'applique en deux couches à l'aide d'une taloche en inox en effectuant avec l'outil des rotations en directions opposées et aléatoires afin d'obtenir une finition velours à deux tons. Une fois la première couche sèche, appliquer une seconde couche.

Ne pas appliquer à une température ambiante inférieure à 5° C ou par temps pluvieux.

Recommandation

Il est recommandé d'installer un système d'illumination approprié afin de mettre en valeur les cristaux et l'effet d'Oro®.

Nettoyage des Outils

Éliminer autant que possible le reste du produit de la surface des outils. Nettoyer ces derniers en les frottant vigoureusement avec de l'eau et du savon.

Ne pas vider les restes du produit dans les égouts ou les voies d'eau.

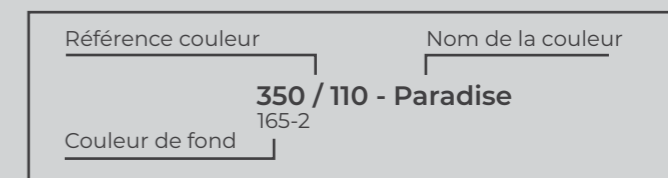
Information Additionnelle

Le processus de fabrication est soumis aux plus strictes contrôles de qualité certifiés conformes au standard ISO 9001 : 2008.

Transport et Stockage

Stockez le produit à l'abri de l'humidité et des températures de gel.

SYSTÈME DE CODAGE





350 / 00 - Linen
White



350 / 103 - Toile
172-1



350 / 101 - Alépine
198-2



350 / 104 - Soie
172-1

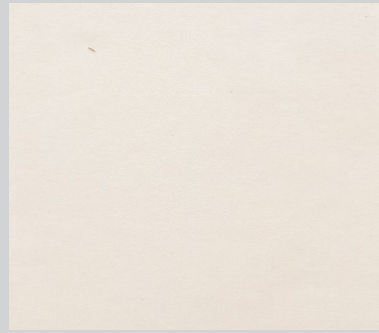


350 / 102 - Coton
198-1



350 / 105 - Croisé
172-1

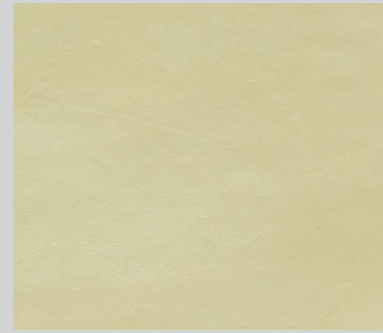
PRO



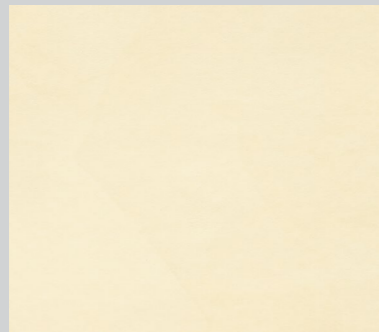
350 / 106 - Smooth
White



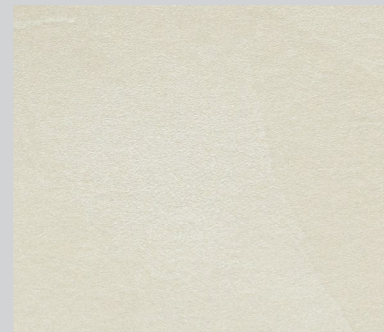
350 / 110 - Paradise
165-2



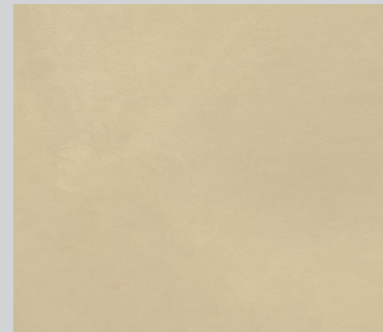
350 / 114 - Path
165-3



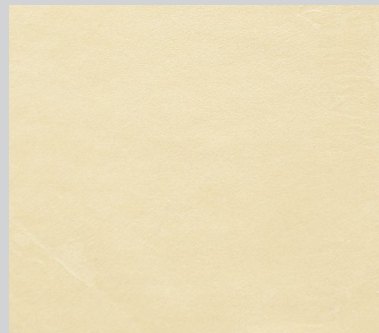
350 / 107 - Gypsum
165-2



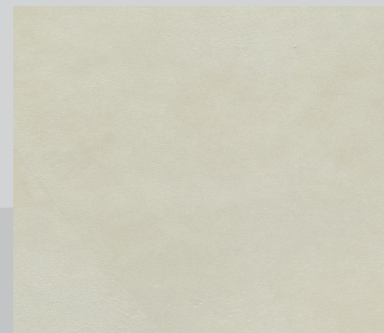
350 / 111 - Offbeat
165-2



350 / 115 - Tricot
161-2



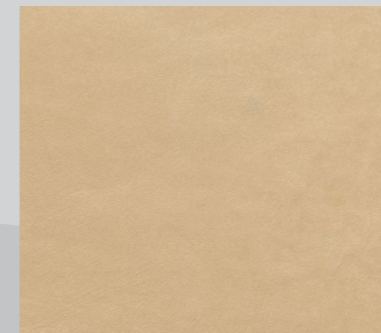
350 / 108 - Soft
165-2



350 / 112 - Element
165-3



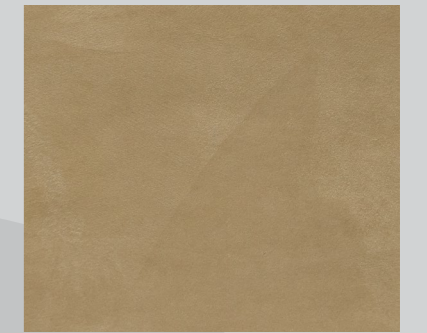
350 / 116 - Barège
161-2



350 / 118 - Tule
171-2



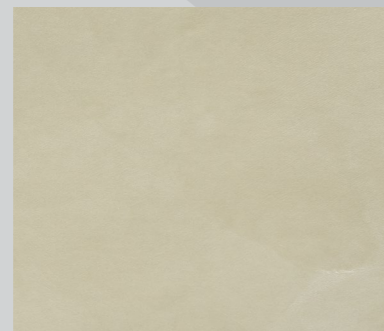
350 / 120 - Hills
171-2



350 / 122 - Cadès
171-3



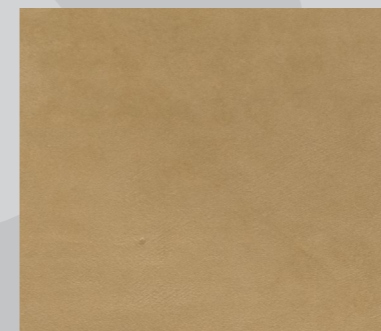
350 / 109 - Spring
165-2



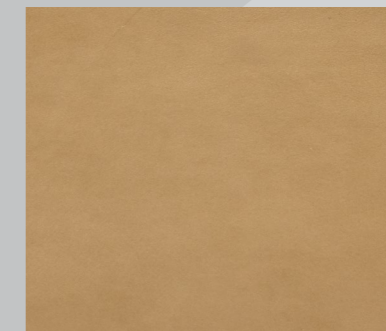
350 / 113 - Golden
165-3



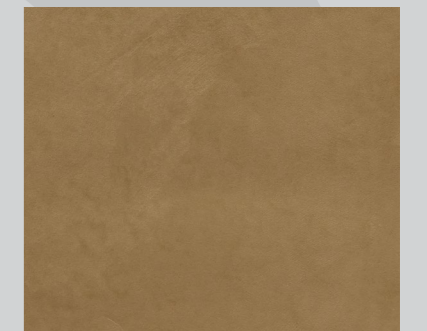
350 / 117 - Laine
165-3



350 / 119 - Jacquard
171-2



350 / 121 - Olive
171-2



350 / 123 - Thyme
171-3



350 / 124 - Cretonne
091-3



350 / 127 - Sergine
165-2



350 / 130 - Froissé
165-2



350 / 125 - Velvet
091-3



350 / 128 - Lamé
165-2



350 / 131 - Nid
165-2



350 / 126 - Jute
091-3



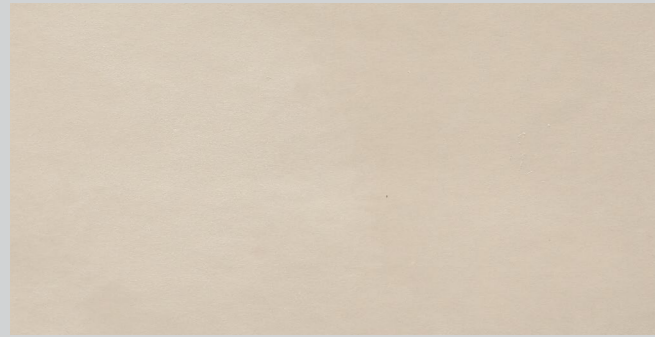
350 / 129 - Percale
165-2



350 / 132 - Willow
165-3

ORRO

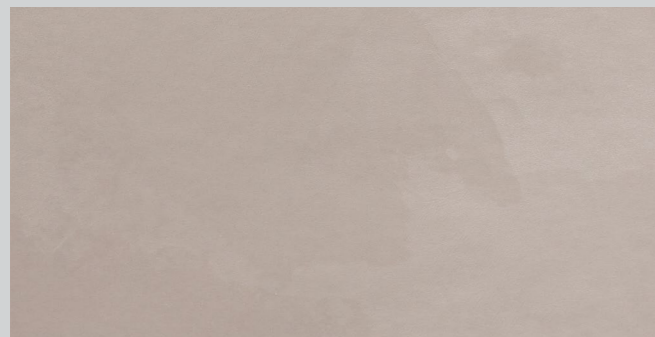




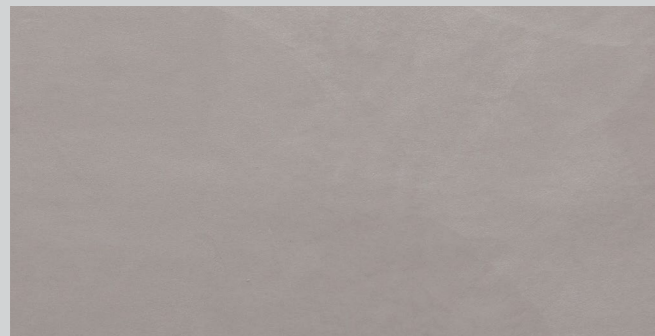
350 / 133 - Plumetis
131-2



350 / 134 - Molleton
131-2



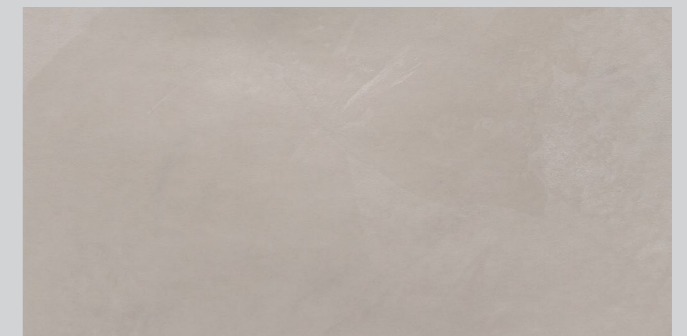
350 / 135 - Lustrine
131-2



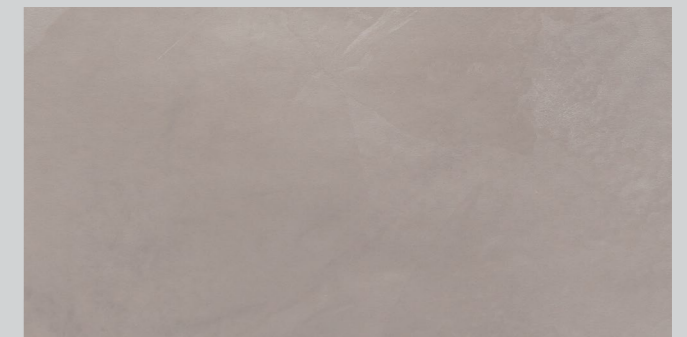
350 / 136 - Natte
131-2



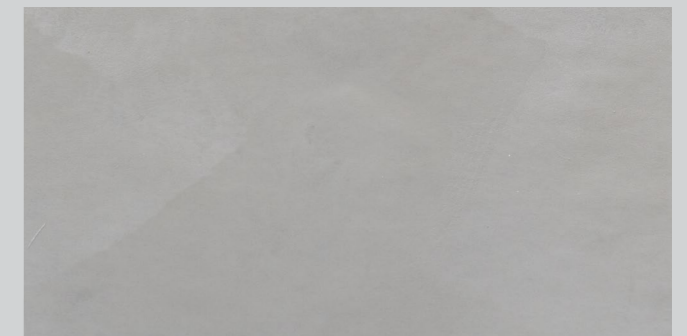
350 / 137 - Reps
141-3



350 / 138 - Métis
141-3



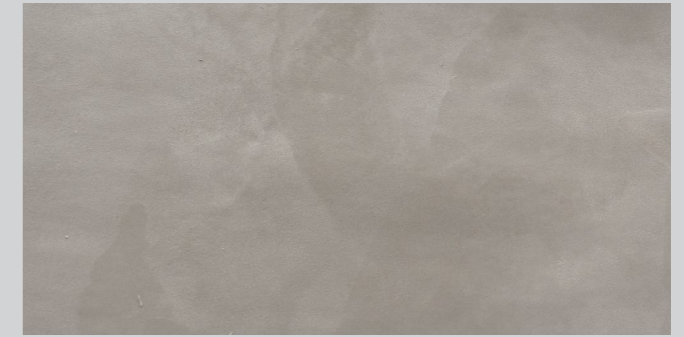
350 / 139 - Ninon
141-3



350 / 140 - Faille
141-3



350 / 141 - Bure
139-4

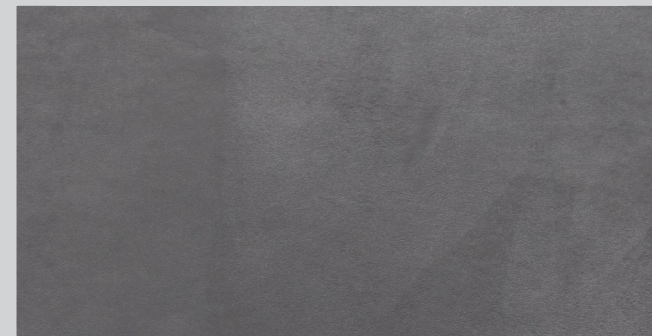


350 / 142 - Crin
141-3

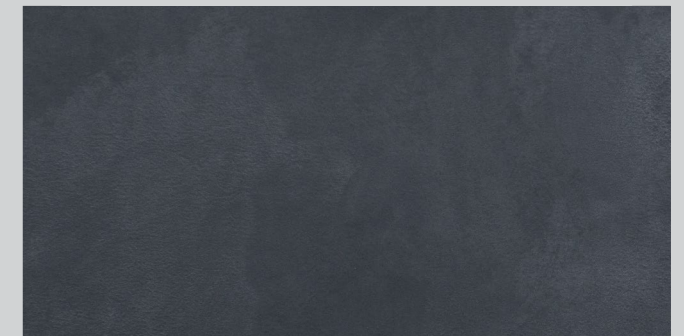


350 / 143 - Whipcord
141-3

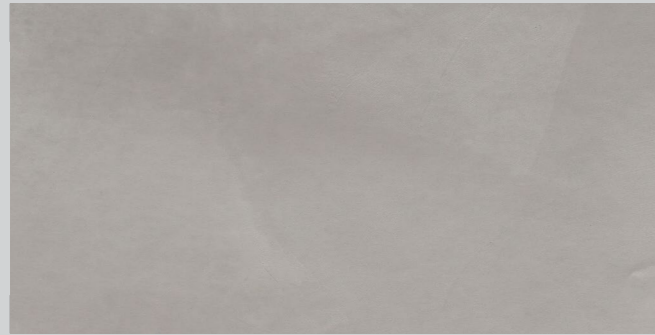
Oro Tin Effect



350 / 144 - Caban
139-4



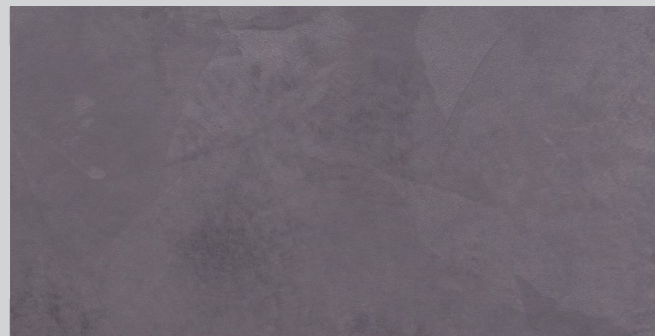
350 / 145 - Bedrock
135-5



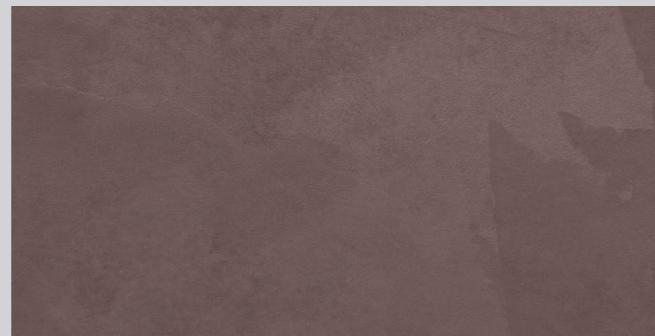
350 / 146 - Vessel
139-4



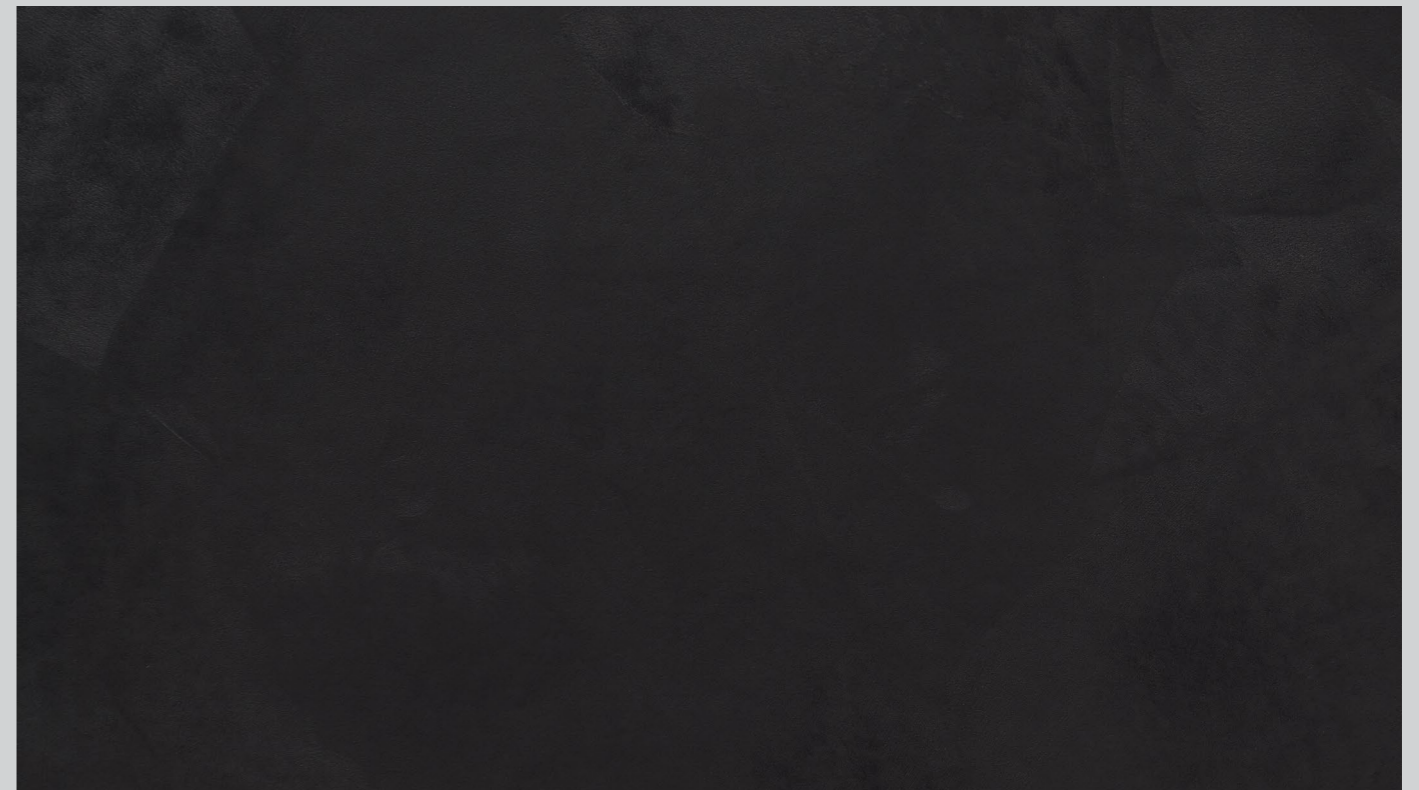
350 / 148 - Pewter
130-4



350 / 147 - Warm
134-3



350 / 149 - Lunar
196-4



360 / 00 - Obscure
R 10

Oro Effect



350 / 150 - Etamine
194-3



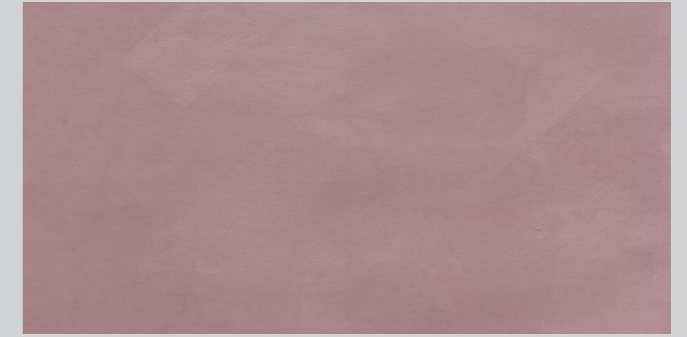
350 / 151 - Pékiné
194-3



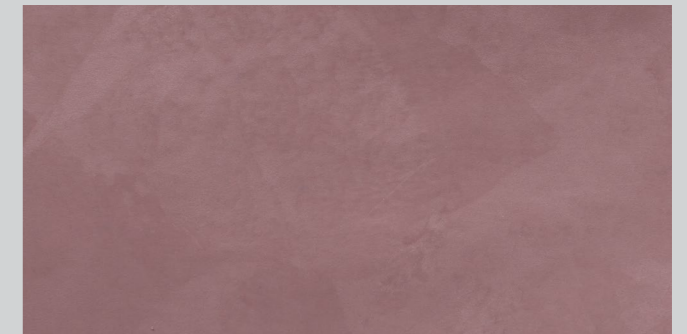
350 / 152 - Régence
194-3



350 / 153 - Angora
194-3



350 / 154 - Quadrillé
194-3



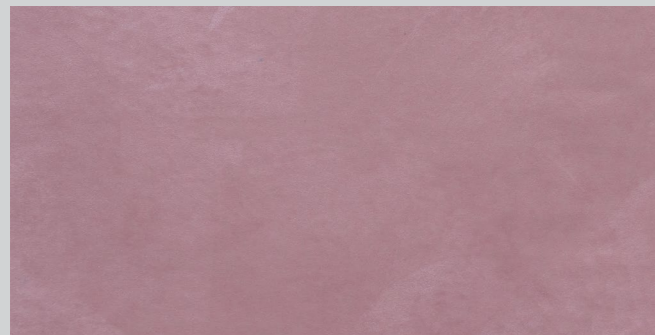
350 / 155 - Tabis
194-3



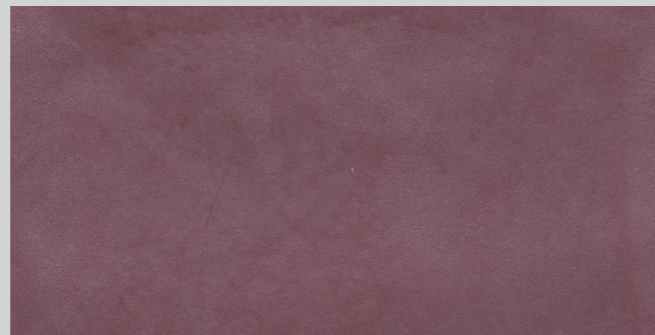
350 / 156 - Cloqué
194-3



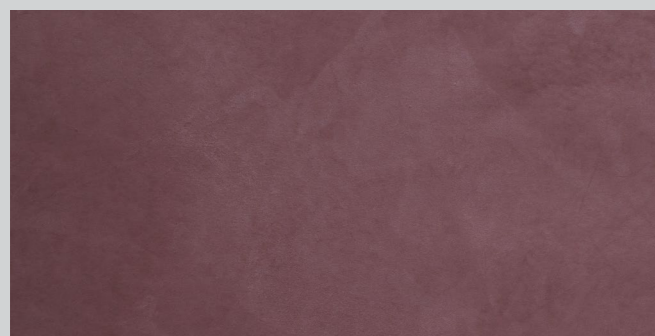
350 / 157 - Tapa
194-3



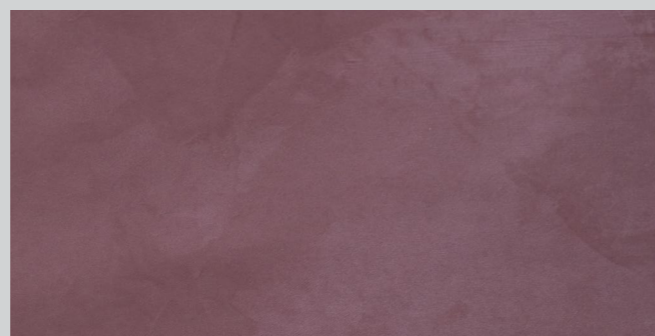
350 / 158 - Velour
194-4



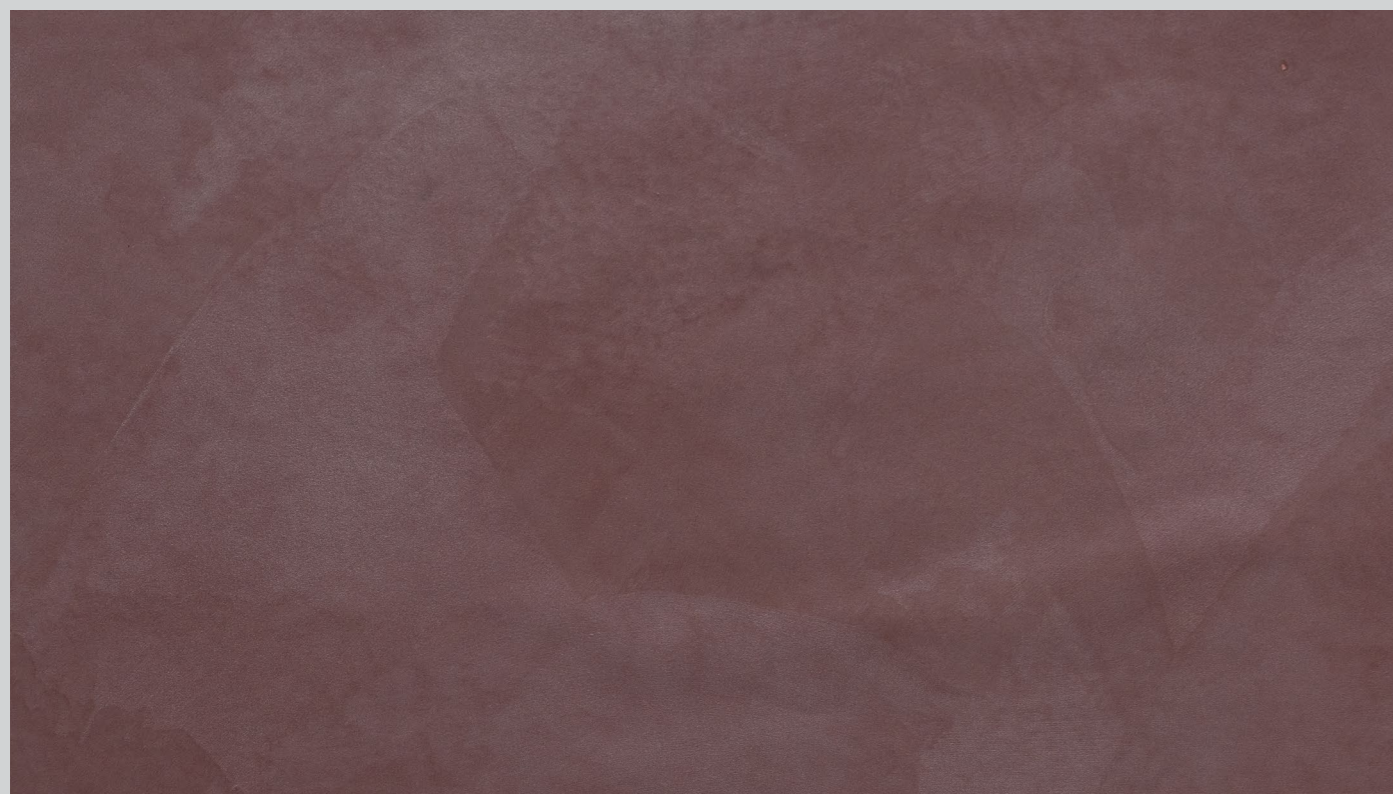
350 / 160 - Bogolan
194-4



350 / 159 - Fil
194-4



350 / 161 - Royale
194-4



350 / 162 - Voyage
194-4

Oro Effect





350 / 163 - Lin
189-2



350 / 167 - Frappé
181-3



350 / 171 - Cuir
184-3



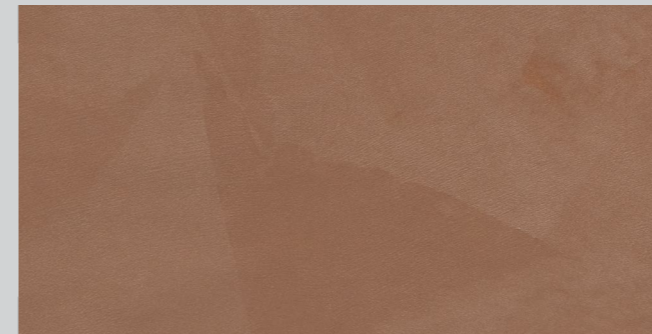
350 / 173 - Japon
IT 121-5



350 / 164 - Chiffon
IT86-1



350 / 168 - Frisé
190-3



350 / 172 - Vichy
181-4



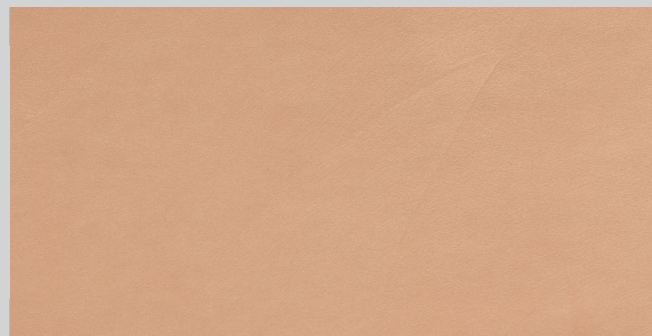
350 / 174 - Acca
IT 121-5



350 / 165 - Moire
189-2



350 / 169 - Organdi
183-3



350 / 166 - Pilou
183-3

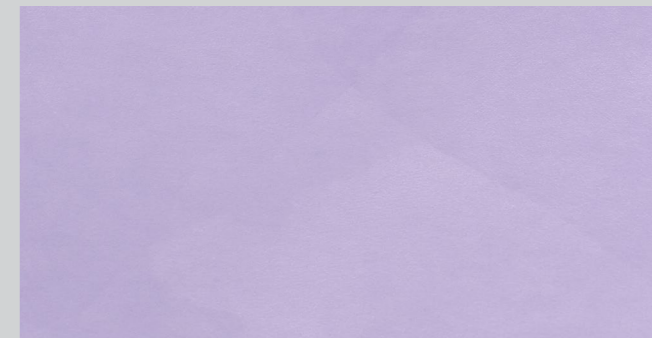


350 / 170 - Piqué
181-4

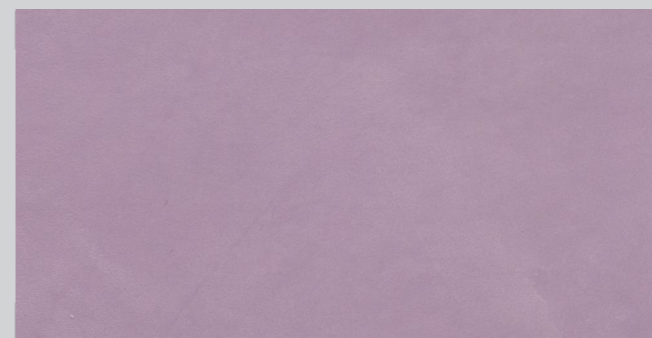




350 / 175 - Gaze
IT 117-6



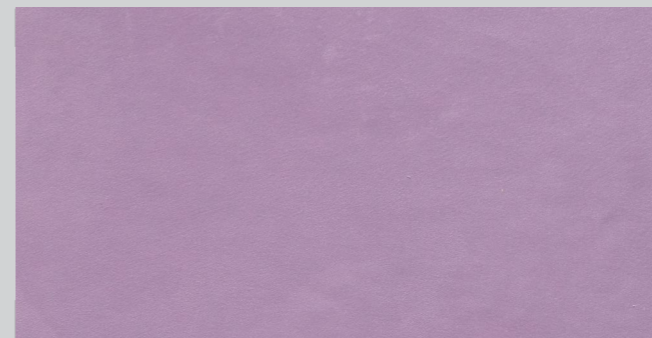
350 / 179 - Raphia
IT 117-6



350 / 176 - Tissue
IT 117-6



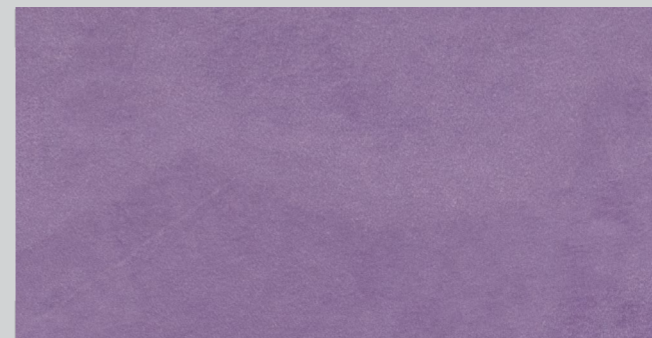
350 / 180 - Popeline
IT 117-6



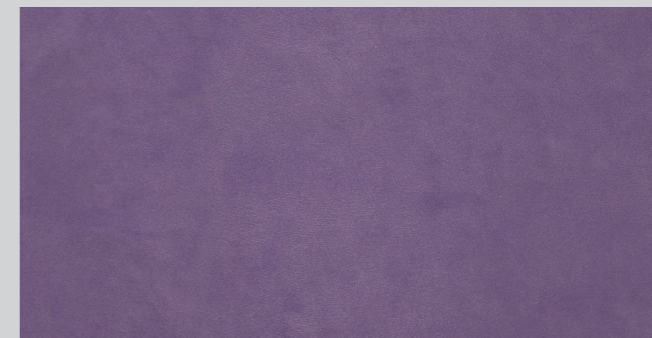
350 / 177 - Ancélia
IT 117-6



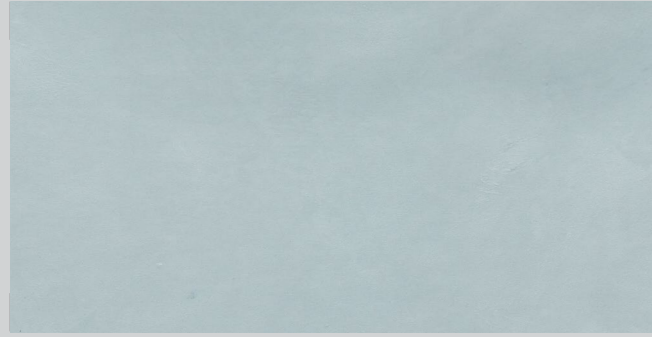
350 / 181 - Kelsch
IT 117-6



350 / 178 - Calicot
IT 117-6



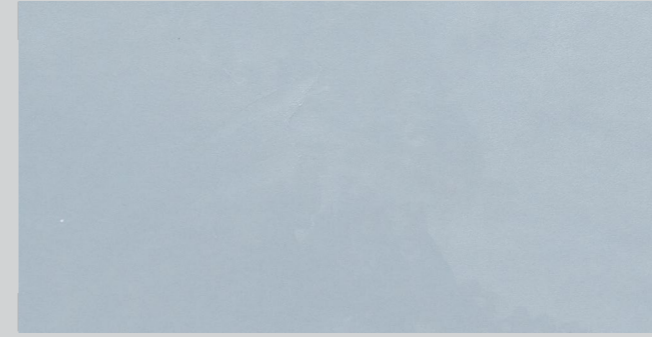
350 / 182 - Drap
IT 117-6



350 / 183 - Impériale
IT 145-2



350 / 185 - Mohair
IT 145-2



350 / 187 - Tussor
IT 146-6



350 / 189 - Épinglé
IT 144-3



350 / 184 - Éolienne
IT 145-2



350 / 186 - Coutil
IT 145-2



350 / 188 - Droguet
IT 146-6



350 / 190 - Façonné
IT 146-6

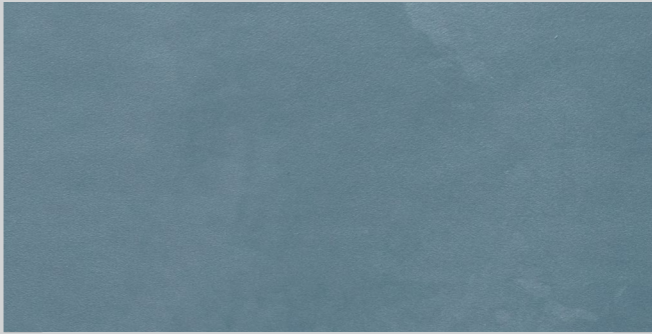




350 / 191 - Tweed
IT 144-3



350 / 193 - Jeans
IT 144-3



350 / 192 - Rayon
IT 144-3



350 / 194 - Night Out
IT 146-5



350 / 195 - Blues
Base IT 144-3

Oro Dragged Effect



350 / 196 - Valley
IT 140-2



350 / 200 - Chanvre
IT 103-7



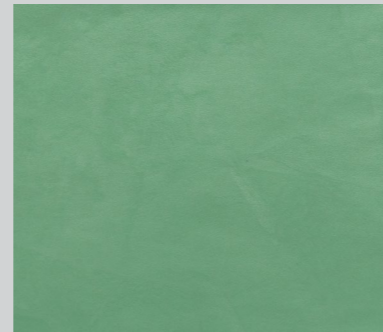
350 / 204 - Pongé
IT 105-7



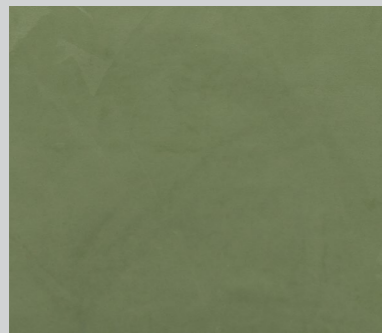
350 / 197 - Leaves
IT 140-2



350 / 201 - Wax
IT 105-7



350 / 205 - Minky
IT 105-1



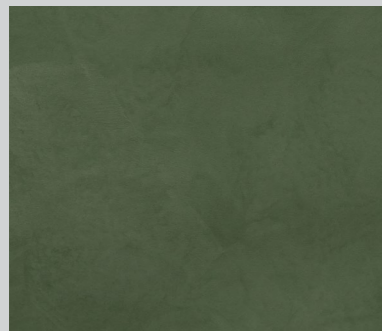
350 / 198 - Energy
IT 140-2



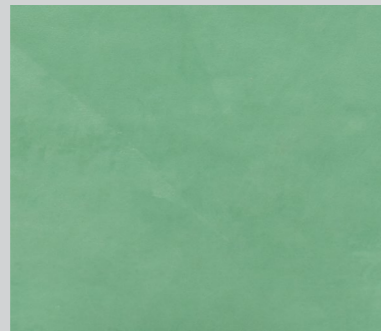
350 / 202 - Cameleon
IT 105-7



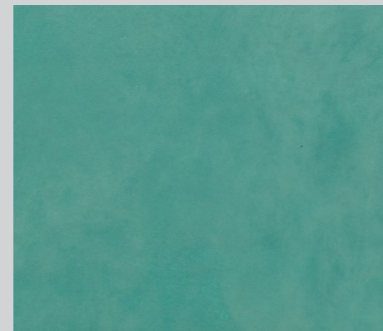
350 / 206 - Bachette
IT 110-2



350 / 199 - Grass
IT 140-4



350 / 203 - Brocart
IT 105-1



350 / 207 - Batik
IT 110-2





COLORTEK®



www.colortek.eu
info@colortek.eu

  [colortekpaints](https://www.instagram.com/colortekpaints)