

WEQCEMENT

SEAMLESS CONCRETE EFFECT



COLORTEK®

WALL TO FLOOR CEMENT FINISHES



NEOCEMENT® INDUSTRIAL CHIC

Neocement® is a seamless, joint free, decorative finish specifically designed for application on interior or exterior walls and floors.

Applied by hand at reduced thicknesses, Neocement® finishes are real work of craftsmanship that can be personalized to your own style by playing with color schemes and intensity, texture effects or even stencils and stamping to give any space its own unique character.

This versatility makes Neocement® perfect to add depth, harmony and simple sophistication to private homes, businesses, showrooms, restaurants, stores or even shopping centers.

Neocement, Colortek, Wall & Floor Fashion and the Colortek Drop Symbol are registered trademarks.

© 2021

www.neocement.com





INNOVATIVE MATERIAL SUSTAINABLE DESIGN

Neocement® is part of the new generation of smart decorative products meant to transform your space with minimal impact.

Applied on a multitude of surfaces, in any conditions (concrete, ceramics, wood, plasterboard, masonry walls, staircases, bathtubs, showers, etc.),

Neocement®'s formulation is based on a cement and very low VOC water-based polymers blend, allowing it to meet sustainable architectural requirements for adaptability, transformation and change of any surface at a much lower cost than removal and replacement.

Photo 01

Iwan Maktabi Showroom

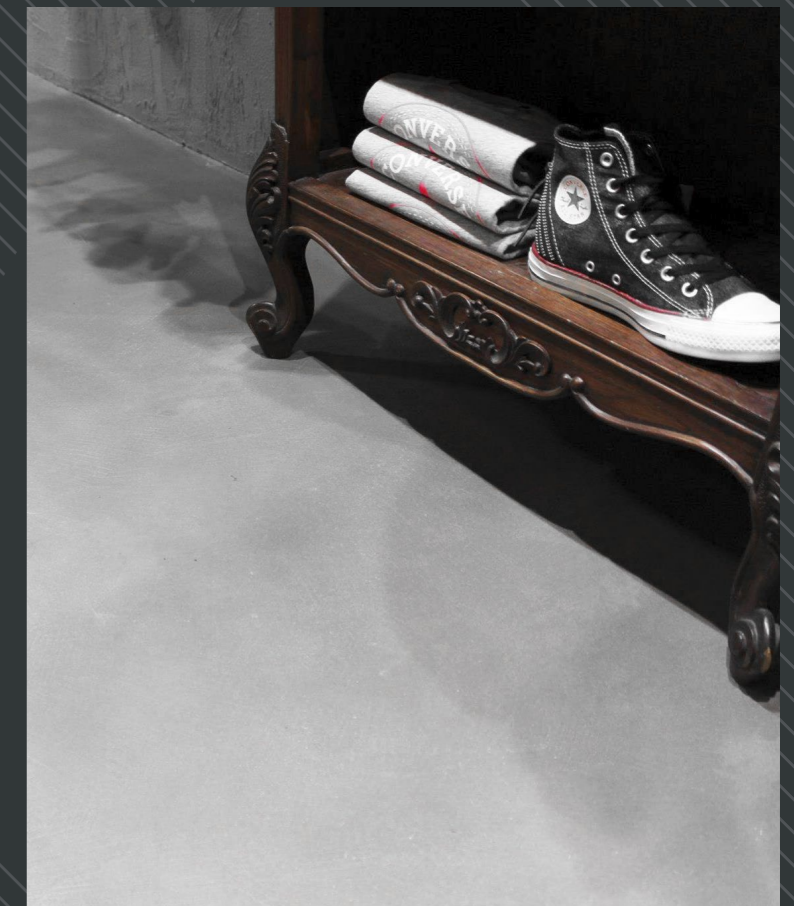


Photo 02

Zaatar W Zeit

Photo 03

Converse Store





HIGH PERFORMANCE DURABILITY

With only a thickness of 3 millimeters, Neocement can be applied on horizontal and vertical surfaces, indoors and outdoors and even on objects such as furniture, allowing you to give free rein to your creativity without constraints or limitations.

Extraordinary adhesion, high abrasion and compression resistance, as well as UV and water resistance properties make this product an ideal choice to renovate any type of surface, while reducing to a minimum dust, rubble and all other waste from normal restoration works.

Photo 04

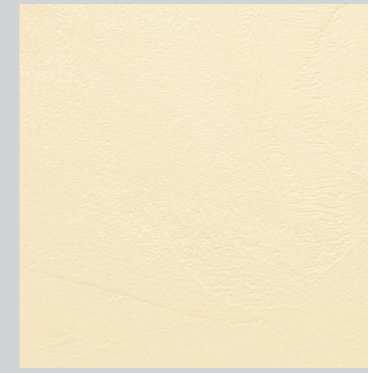
DXB Airport - Terminal 3

Photo 05

Artists Loft



Photo 06
Private Villa



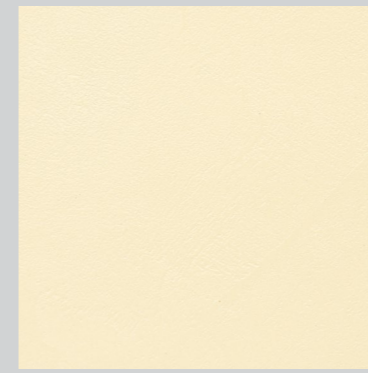
200/130 - Wave



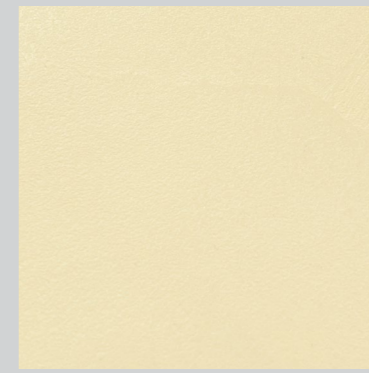
200/00 - Castle White



200/137 - Sandy
+ Metallo Acier



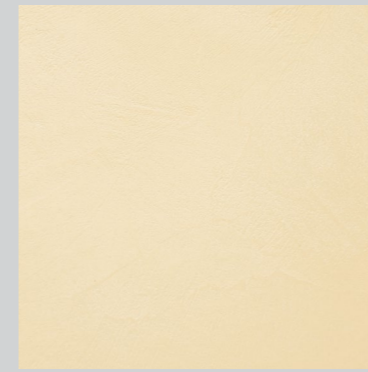
200/131 - Slurry



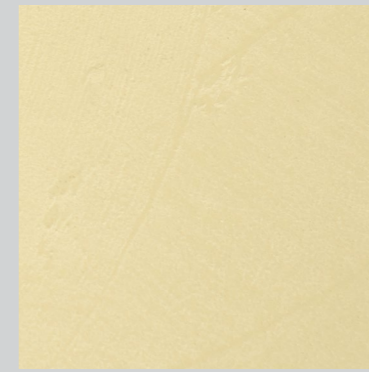
200/134 - Smooth



200/138 - Path
+ Metallo Acier



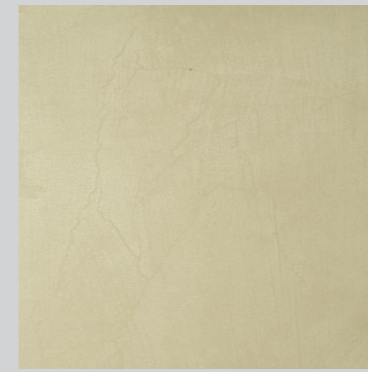
200/132 - Gypsum



200/135 - Desert



200/139 - Gravel
+ Metallo Acier



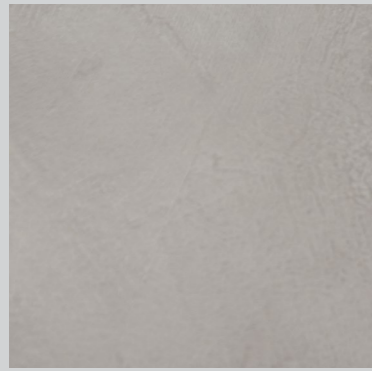
200/133 - Quartz



200/136 - Smoke



200/140 - Pavement
+ Metallo Acier



200/141 - Floor



200/143 - Peat
+ Metallo Flash Gold



200/145 - Modern
+ Metallo Flash Gold



200/142 - Silt



200/144 - Depth
+ Metallo Flash Gold



200/146 - Backyard
+ Metallo Gold

Photo 07

Nike Stores



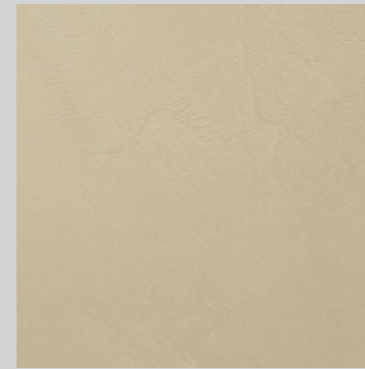
Photo 08

Private Villa





Photo 09
Restaurant



200/147 - Timber



200/149 - Soil
+ Metallo Gold



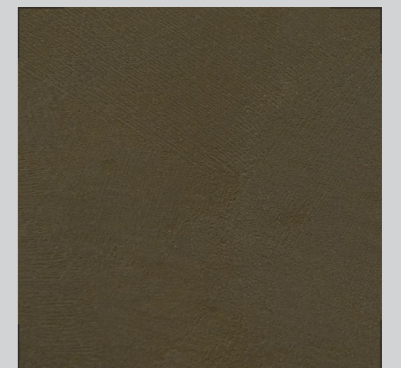
200/151 - Carbon
+ Metallo Doré



200/148 - Beton



200/150 - Brute
+ Metallo Gold

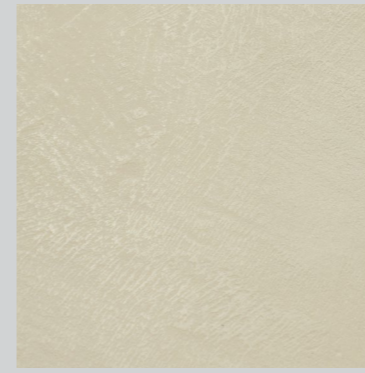


200/152 - Cast
+ Metallo Doré





Photo 10
Westin Hotel



200/153 - Mortar



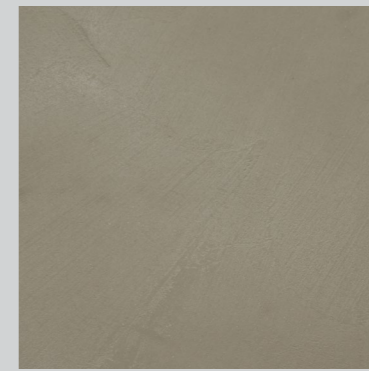
200/157 - Seamless



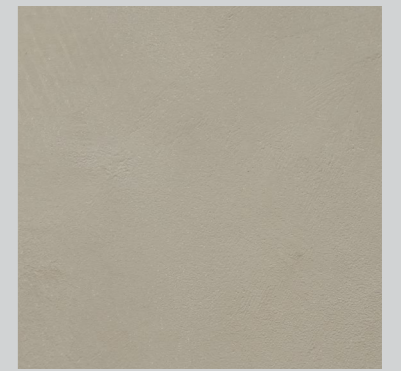
200/161 - Metal



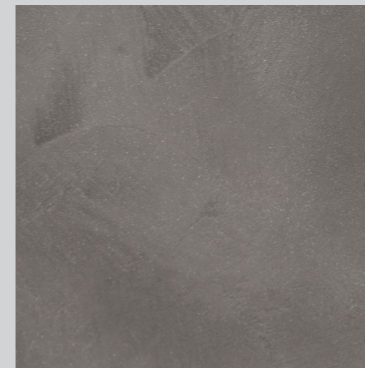
200/154 - Loam



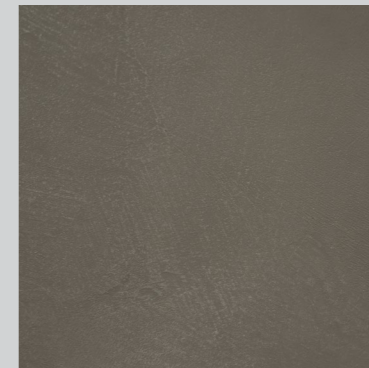
200/158 - Lime



200/162 - Rubber



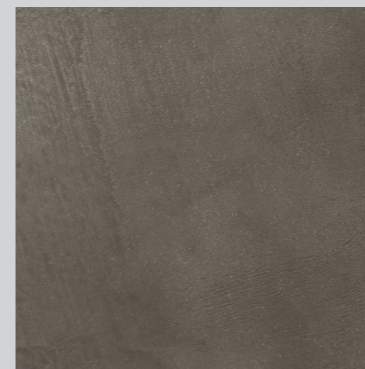
200/155 - Soil



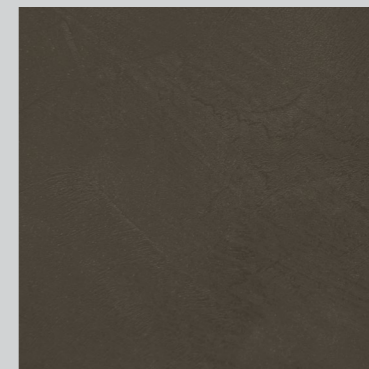
200/159 - Resin



200/163 - Graphite



200/156 - Reinforced



200/160 - Chalk



200/164 - Clay

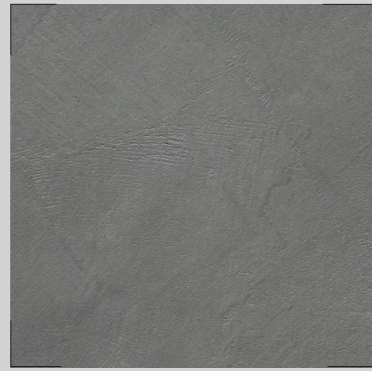
Photo 11

Private Villa





200/165 - Urban



200/167 - Accent
+ Metallo Alliage



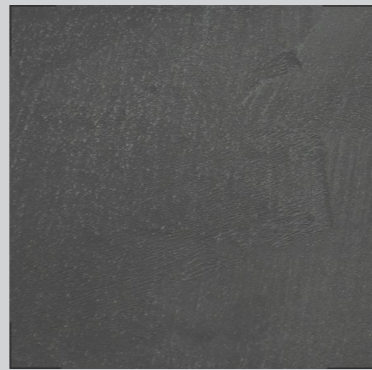
200/169 - Abstract
+ Metallo Tôle



200/166 - Mist



200/168 - Archive
+ Metallo Alliage



200/170 - Pencil
+ Metallo Tôle



Photo 12

Colortek Showrooms



Photo 13

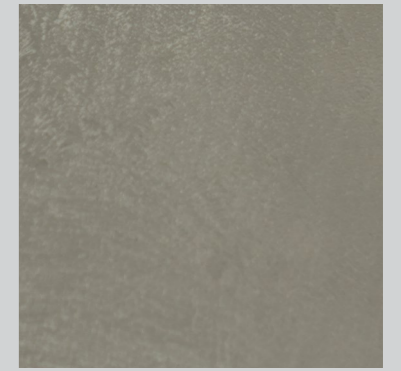
Private Residence



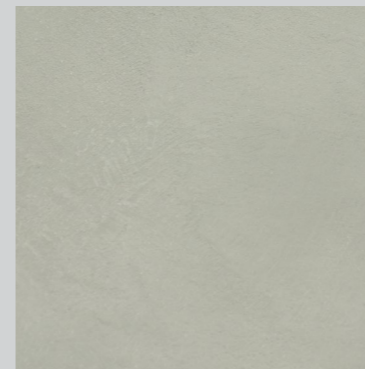
200/171 - Castmix



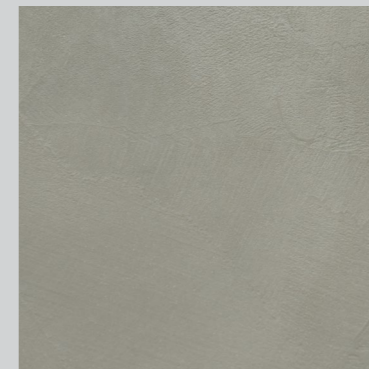
200/175 - Density



200/179 - Prints



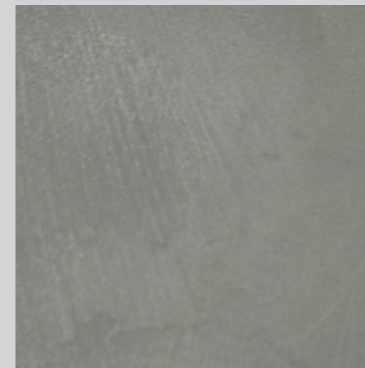
200/172 - Gravity



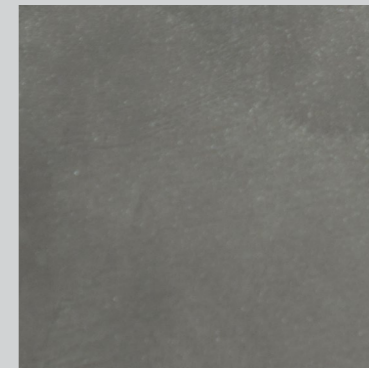
200/176 - Coal



200/180 - Iron



200/173 - Plaster



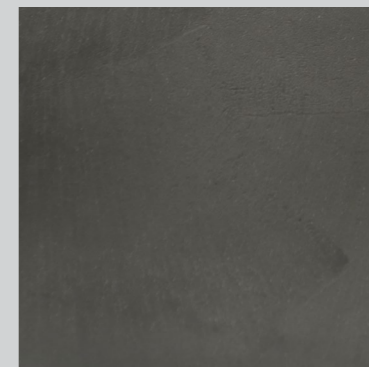
200/177 - Mica



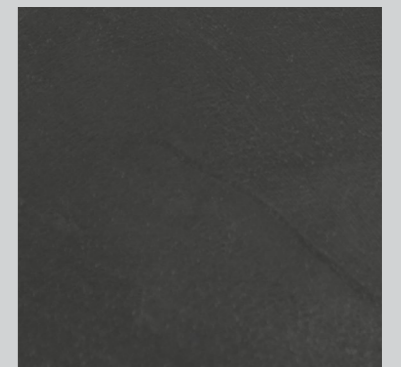
200/181 - Dryset



200/174 - Steel



200/178 - Magnet

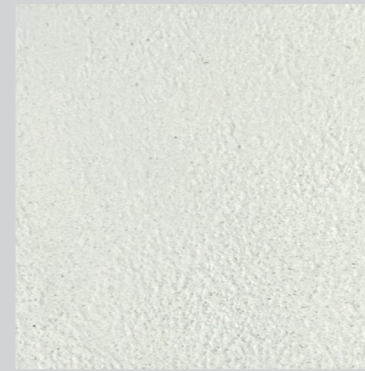


200/182 - Asphalt

Photo 14
Private Villa



NEOCEMENT TITANIUM®



230/00 - Titanium

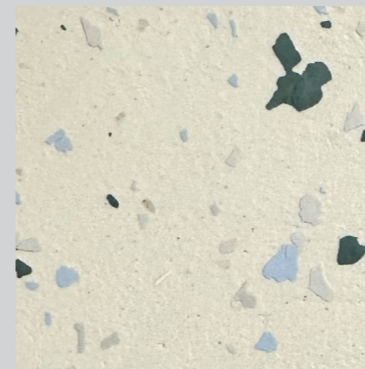


230/20 - Pearl

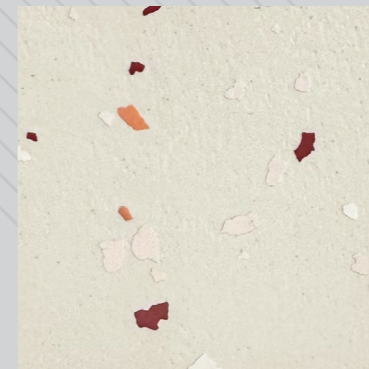


230/22 - Frost

NEOCEMENT TERRA®



230/00 - Titanium
+ Terra Infusion - Minty Green
+ Polylock Low Gloss



230/20 - Pearl
+ Terra Infusion - Flame
+ Polylock Low Gloss



230/22 - Frost
+ Terra Infusion - Espresso
+ Polylock Low Gloss



PROTECTIVE TOP COAT BASED ON INTENDED USE

LOCATION & EXPECTED CONDITIONS		VERTICAL SURFACE	HORIZONTAL SURFACE LIGHT TRAFFIC	HORIZONTAL SURFACE MEDIUM TRAFFIC	HORIZONTAL SURFACE HEAVY TRAFFIC
INTERIOR	Dry conditions	Decorator Varnish	Neoshield (2 coats) Polylock (2 coats)	Polylock (2 coats)	Neofiller (3 coats) + Polylock (2 coats)
	Humid conditions	Polylock (2 coats)	Polylock (3 coats)	Polylock (3 coats)	Neofiller (3 coats) + Polylock (3 coats)
	Submerged conditions	Colortek PL1 (2 coats)	Colortek PL1 (2 coats)	Colortek PL1 (2 coats)	Neofiller (3 coats) + Colortek PL1 (2 coats)
EXTERIOR	Dry conditions	Decorator Varnish	Polylock (2 coats)	Polylock (2 coats)	Neofiller (3 coats) + Polylock (2 coats)
	Humid conditions	Polylock (3 coats)	Polylock (3 coats)	Polylock (3 coats)	Neofiller (3 coats) + Polylock (3 coats)
	Submerged conditions	Neofiller (3 coats) + Colortek PL1 (2 coats)	Neofiller (3 coats) + Colortek PL1 (2 coats)	Neofiller (3 coats) + Colortek PL1 (2 coats)	Neofiller (3 coats) + Colortek PL1 (2 coats)

PRODUCT NOTICE

- PL1 has a glossy finish. If a flat finish is required, apply a final coat of COLORTEK PL1 Low Gloss.
- Polylock is available in low gloss, gloss and anti-slip versions.



NEOCEMENT FLOOR SYSTEM

1. SURFACE PREPARATION

- On concrete, apply SX0 PrimeWell, or SX9 HumiGuard
- On Glazed floor tiles, apply Neogrip.

2. NEOFILLER BASE COAT APPLICATION

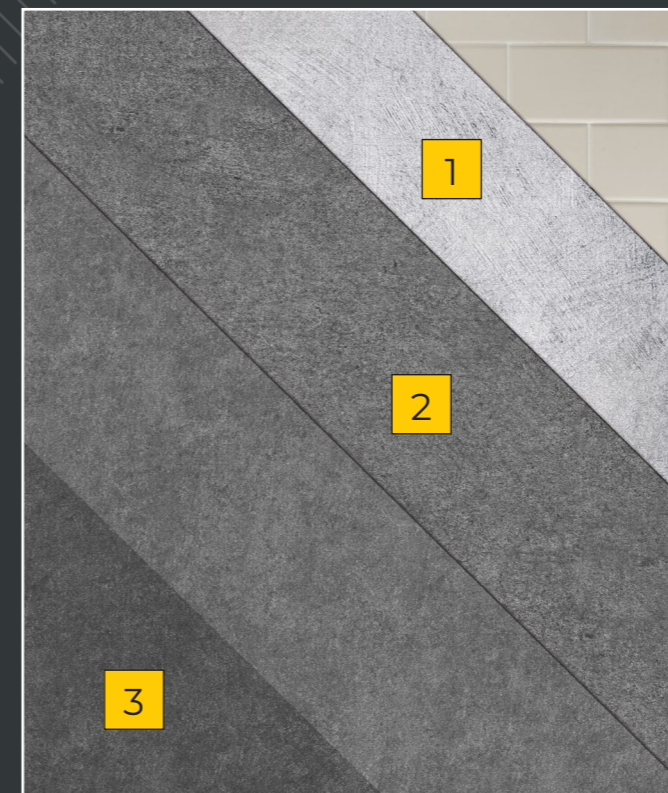
- Apply Neofiller in 2 coats
- Sand with a 40 grid once the surface has hardened.

3. NEOCEMENT APPLICATION

- Apply Neocement in 2 coats. Once the first coat has dried, apply the second coat, wait for it to harden before sanding the surface with a 150 or 220 grid.

4. PROTECTIVE COAT APPLICATION

- Apply the appropriate protective topcoat depending on the intended use of the surface and its location.



NEOCEMENT WALL SYSTEM

1. SURFACE PREPARATION

- On concrete, apply Colortek Fondo F.
- On glazed tiles, apply the Colortek Putty XT/XF exterior skim coat system.

2. NEOCEMENT APPLICATION

- Apply Neocement in 2 coats. Once the first coat has dried, apply the second coat, wait for it to harden before sanding the surface with a 150 or 220 grid.

3. PROTECTIVE COAT APPLICATION

- Apply the appropriate protective topcoat depending on the intended use of the surface and its location.

IMPORTANT NOTICE

- Cracks and holes should be repaired with Colortek SX2 Epoxy Filler.
- Glazed tiles should be sanded and tiles joints should be treated with SX2 Epoxy Filler.

NEOCEMENT® TECHNICAL DATA

Technical Name:

Polished cement.

Key Properties:

- High durability
- Impact and abrasion resistance
- Anti-static and fire resistance
- Moisture vapor permeable
- Excellent water resistance
- Flexible flooring
- Low VOC Technology
- Seamless flooring option
- Wide range of colors, textures and patterns
- Extends life-cycle appearance of concrete
- 3 Hours pot life

Pack Size:

- 13.88 kg paste + 8.42 kg filler + 2.82 kg resin
- 2.32 kg paste + 1.40 kg filler + 0.47 kg resin

Recommended Uses:

Neocement® is suitable for interior and exterior applications on horizontal and vertical surfaces.

Types of Substrate:

Neocement® can be applied on a multitude of surfaces such as concrete, wood, metal, marble, ceramic tiles and even glass.

Finish:

Mid sheen polished finish.

Coverage:

Approximately 2 m²/kg/coat – 2 coats required

Drying Time:

Open to light traffic after 24 hours. Full cure in 72 hours depending on weather conditions and ambient temperature.

Thinner:

No thinning required.

Preparation:

All surfaces to be painted should be repaired, clean, dry and free from loose and flaking material. Then the surfaces should be sanded smooth, dusted clean and primed with a suitable Colortek® Primer.

Instructions:

Apply SX0 Primewell or SX9 Humiguard to consolidate the surface. On ceramic apply a coat of Neogrip.

- Apply Neofiller Base Coat (two coats). Once the second coat has dried, sand the surface with a 60 grit and remove the dust.
- Apply first Neocement coat; (mix all three components until obtaining a relatively pasty mortar with good sag resistance.
- Once the coat has dried, sand the surface with a 150 or 220 grit and remove the dust.
- Apply the desired protective top-coat depending on intended use of the surface and location.
- When applying on ceramic tiles, it is important to remove or block the joint tiles with Colortek® SX2.

Cleaning:

Remove as much product as possible from application equipment before cleaning. Clean equipment immediately after use with warm soapy water and rinse thoroughly. Do not empty product into drains or watercourse.

Additional Info:

Product batches are tested using a quality control system and are ISO9001:2008 certified.

Transportation & Storage:

Care should be taken to avoid spillage. Protect from frost and humidity.

NEOCEMENT® INFO TECHNIQUES

Nom Technique:

Béton ciré.

Propriétés:

- Haute résistance aux chocs et à l'abrasion
- Résistance antistatique et au feu
- Perméable à la vapeur d'eau
- Protège contre la pénétration de l'eau, des chlorures et CO²
- Propriétés supérieures d'adhérence
- Flexible
- Très faible contenant en COV
- Finition sans jointures
- Vaste choix de couleurs, textures et motifs
- Durée d'utilisation de 3 heures

Emballage:

- 13.88 kg pâte + 8.42 kg filler + 2.82 kg resine
- 2.32 kg pâte + 1.40 kg filler + 0.47 kg resine

Usage Recommandé:

Neocement® est applicable à l'intérieur et l'extérieur sur des surfaces horizontales et verticales dans des endroits tels que les cuisines, les salles de bain, les cabines de douche ou même les baignoires. Adapté pour les zones à fort trafic.

Types de Support:

Neocement® peut être appliqué sur une multitude de surfaces tels que le béton brute, le bois, le métal, le granite, la céramique ou même le verre.

Finition:

Satinée.

Rendement:

Environ 2 m²/kg/couche - 2 couches requises.

Temps de Séchage:

24h pour le trafic léger et 72h pour le durcissement complet en fonction des conditions climatiques et de la température ambiante.

Diluant:

Aucune dilution requise.

Préparation du Support:

Le support doit être dur, propre, sain, sec, cohésif et libre de toute matière telle que salpêtre, mousse, lichen ou autres microorganismes pouvant empêcher l'adhérence du produit sur le support.

Application:

- Applique une couche de SX0 Primewell ou SX9 Humiguard afin de consolider les surfaces friables ou poreuses. Sur céramique, application de Neogrip est recommandée.
- Appliquer Neofiller en deux couches tout en laissant un temps de séchage approprié entre les deux couches.
- Une fois la base Neofiller sèche, poncer la surface et enlever la poussière.
- Appliquer Neocement en deux couches tout en laissant un temps de séchage approprié entre les deux couches.
- Une fois la seconde couche sèche, poncer la et nettoyer la surface.
- Appliquer la protection appropriée en fonction de l'usage.
- Lorsque l'application se fait sur de la céramique ou du carrelage, il est important de traiter les jointures avec Colortek® SX2.

Nettoyage des Outils:

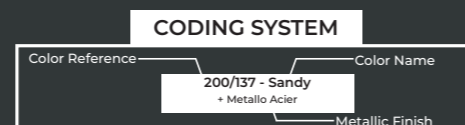
Éliminer autant que possible le reste du produit de la surface des outils. Nettoyer ces derniers en les frottant vigoureusement avec de l'eau et du savon. Ne pas vider les restes du produit dans égout ou voies d'eau.

Information Additionnelle:












Le processus de fabrication de Neocement® est soumis au plus stricts contrôles de qualité certifiés conformes au standard ISO 9001:2008.

Transport & Stockage:

Stocker le produit à l'abri de l'humidité et des températures de gel.



TESTING RESULTS

TEST	FEATURE	NORM	RESULT
	Indoor Air Quality	UNI EN ISO 9:2006-16000	A+ For Low VOC Emissions
	Thermal Resistance & Thermal Conductivity	ASTM E11-1530	$\lambda=0,46$ (W/mK)
	Fire Reaction	UNE-EN ISO 1716:2011 UNE-EN ISO 1:2011-9239	A2fl-s1
	Resistance To Chemicals	ASTM D 3260 ASTM D 1308	No alteration & no reduction of Shore
	Water Vapor Permeability	BS2782	203 g/m ² in 24 hours
	Water Absorption	DIN 52617	0,076 kg/m ² X h ^{0,5}
	Adhesion	ASTM D4541	>2 MPa, exceeding FeRFA limits for excellent flooring adhesion
	Abrasion Resistance	ASTM D4060	500 cycles/mil with 1 Kg load using CS17-
	Resistance To Impact	ASTM D2794	Sample intact after collision >1.4m For 1kg ball >0.7m For 2kg ball
	Surface Hardness	ASTM 2240	Shore D >75
	Slip Resistance	ASTM C1028	SRV >70 (R12 for Good Slip Resistance)

QUESTIONS AND ANSWERS

HOW DURABLE IS NEOCEMENT®?

Applied properly and protected by the adequate topcoat, Neocement® should last indefinitely.

IS NEOCEMENT DIFFICULT TO APPLY?

Proper surface preparation is critical. Fixing the substrates and testing for other possible substrate problems should be done by an expert contractor.

IS NEOCEMENT® SUITABLE FOR EXTERIOR APPLICATIONS TOO?

Neocement® can be used in external areas. The system's protective options provide it with good resistance from water penetration, climatic stress and UV rays.

IS NEOCEMENT® SUITABLE FOR COMMERCIAL AND RESIDENTIAL SPACES?

Neocement® is highly resistant to wear and tear and is suitable for any field of interior design.

IS NEOCEMENT® SUITABLE FOR WET AREAS?

Neocement® can be used in wet areas. It is the ideal renovation choice as it can be applied over any type of surface, rendering the removal of old tiles unnecessary.

CAN NEOCEMENT® BE USED WITH UNDERFLOOR HEATING SYSTEMS?

Yes, Neocement® can be used with floor heating systems.

IS NEOCEMENT® STAIN RESISTANT?

Neocement® comes with a range of sealers that meet the requirements of daily life. As long as the liquid is not left stagnant, the protective coating can protect the flooring from spilled liquids.

CAN NEOCEMENT® BE CUSTOMIZED?

Neocement® can be tinted to any color. It is also possible to create different effects or patterns through the use of decorative inserts to form unique, personalized finishes.

CAN NEOCEMENT® BE APPLIED ON TERRAZZO?

Terrazzo tiles differ greatly in their composition with some highly prone to humidity permeability, which is why we recommend the application of SX9 HumiGuard® and of an additional coat of Neofiller, a highly efficient humidity blocker.

CAN NEOCEMENT® BE APPLIED ON GLAZED CERAMIC TILES?

Yes, when the glazed tiles have been treated with Colortek® Neogrip® and slightly sanded or etched to promote adherence.

When applying on ceramic tiles, it is also important to treat the joint tiles with Colortek® Epoxy Joint filler SX2 FillWell. Ceramic tiles joints are traditionally filled with cement-based tiling grout which is prone to letting humidity pass and the Epoxy based SX2 will prevent the ghosting effect.

HOW TO AVOID WATER FILTRATION WHEN CLEANING?

When applying Neocement®, it is important to apply it flush to the wall and to create a virtual skirting that impedes water filtration underneath the decorative coat by applying the protective sealer up to 3 cm vertically.

WHAT IS THE DIFFERENCE BETWEEN SX0 AND SX9?

Colortek® SX9 has additional humidity blocking and grip properties which can help preventing surfacing humidity while providing additional grip to subsequent layers of the Neocement® system.

MAINTENANCE RECOMMENDATIONS

GENERAL MAINTENANCE

Some elementary precautions and regular care can keep your Neocement® Floor in good condition and extend the decorative appearance and life expectancy of any Colortek® Flooring System.

Before cleaning your new floor, you should sweep the area to remove any loose debris using a soft pad mop or a floor scrubber cleaner in combination with protective products based on self-polishing waxes dispersed in water.

IF THE FLOOR IS TO BE WASHED

Sweep or vacuum the floor to remove dust and debris using a soft bristle broom or vacuum cleaner.

Dilute a PH neutral detergent in clean water. Apply the solution to the floor, using a soft-medium pad.

It is important that all detergent residue is removed from the surface of the floor, because detergent can become slippery, which affects safety, or may remain sticky which attracts and holds more dirt.

Periodically treat the surface with protective products based on self-polishing waxes dispersed in water.

PRECAUTIONS

Although Colortek® floors have good mechanical resistance, they may be subject as all materials to time related degradation such as scratches, shine loss etc. Fine particles of dust, dirt and loose debris, act as abrasives with traffic unless the floor is cleaned regularly. Elementary precautions should also be taken to properly maintain the floor:

- Provide a doormat at the entrance that can trap dust, sand and abrasive particles.
- Put felt pads under the furniture, especially movable articles like chairs.
- In the event that heavy furniture has to be moved, place woolen cloth at the base of the furniture.
- Before carrying out painting, electrical or plumbing works, protect the floor with woolen blankets and nylon sheets.
- Quickly clean all stagnant spills of aggressive liquids such as wine, oils, vinegar and coffee.



COLORTEK®

TECHNOLOGY IN ALL ITS COLORS



www.colortek.eu
info@colortek.eu

  [colortekpaints](#)