



APPLICATION GUIDE

# AURI™ FOR ASSISTIVE LISTENING

[AURIAUDIO.COM](http://AURIAUDIO.COM)

AMPETRONIC

**LISTEN**  
TECHNOLOGIES

## AURACAST

### OVERVIEW OF AURACAST™ AND ITS ROLE IN ASSISTIVE LISTENING

Auracast™ broadcast audio is a new standard for Bluetooth Low Energy audio that can broadcast audio to an unlimited number of Auri™ receivers and dedicated Auracast™ compatible devices.

### INTRODUCTION OF AURI™

Auri™ is the first Auracast™ broadcast audio-based assistive listening system designed for venue installations. Auri™ uses Auracast™ broadcast audio technology to deliver high-quality, low-latency audio to dedicated receivers and to newly emerging Auracast™ compatible devices like hearing aids, earbuds, headphones, and mobile phones.

## BENEFITS OF AURI™

FLEXIBLE SYSTEM  
INTEGRATION

INTEGRATED DANTE  
INTERFACE AVAILABLE

HIGH-CHANNEL COUNT

AURACAST™ - QUALIFIED

SCALABLE &  
FLEXIBLE COVERAGE

NETWORK MANAGED

ULTRA-LOW LATENCY

OPEN OR SECURE AUDIO

## HOW AURI™ WORKS



Connect the audio source to an Auri™ transmitter.



The Auri™ transmitter broadcasts the audio stream to devices within range.



Access the audio using an Auri™ dedicated receiver or a device capable of receiving an Auracast™ broadcast.

## KEY COMPONENTS



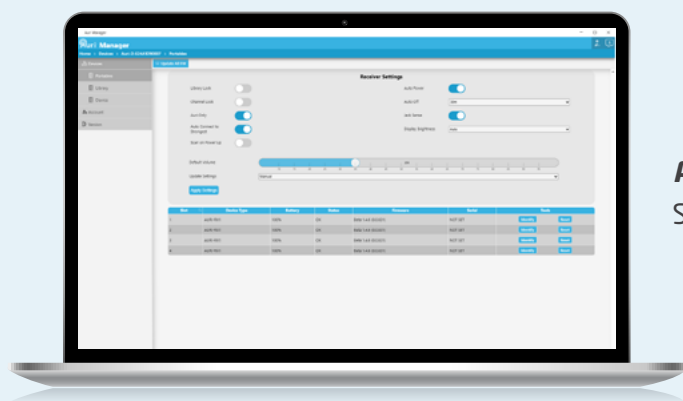
**Auri™ RX1**  
Receiver



**Auri™ TX2N, TX2N-D (Dante)**  
Transmitter



**Auri™ D4**  
Docking Station 4



**Auri™ Manager**  
Software



**Auri™ D16**  
Docking Station 16

## APPLICATION SCENARIOS

### EDUCATION

**Enhance accessibility across campus with Auri™, the advanced assistive listening solution designed for educational settings.**

Ideal for auditoriums, theaters, and student centers, Auri™ provides superior sound clarity and low-latency audio for both personal and assistive listening. Powered by Auracast™ technology, Auri™ supports diverse audiences with customizable audio channels, multi-language options, and network-managed transmitters, making setup easy for campus staff.

Equipped with RX1 receivers and convenient docking stations, Auri™ meets global accessibility standards, enabling students with hearing aids, cochlear implants, or standard headphones to enjoy lectures, performances, and events effortlessly. With Auri™, campuses can create inclusive spaces that support clear communication and full engagement for all participants, setting a new standard in accessible learning environments.

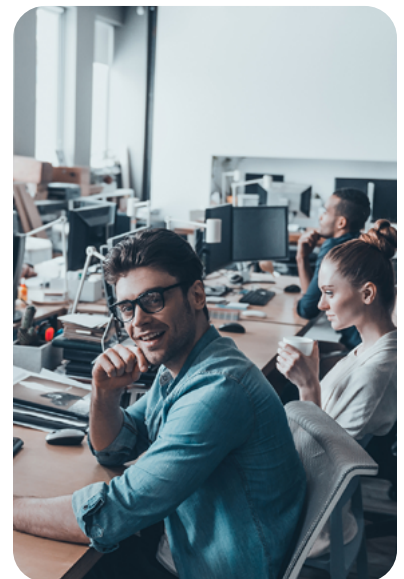


### CORPORATE

**Amplify Communication and Inclusivity in the Workplace**

Transform meetings and presentations with Auri™, the ultimate assistive listening solution for corporate environments. Auri™ delivers clear, wireless audio directly to an Auri™ receiver or employees' devices, ensuring everyone in the room experiences crystal-clear communication, even in large or challenging acoustical spaces. Powered by Auracast™ technology, Auri™ supports multiple audio channels and ultra-low latency, making it an invaluable tool for enhancing productivity and engagement.

Ideal for employees with hearing challenges, Auri™ promotes a more inclusive workplace, allowing seamless connectivity to hearing aids, cochlear implants, or Auracast™ enabled earbuds or headphones. Networked transmitters and easy-to-use receivers ensure straightforward setup and operation, while compliance with global accessibility standards underscores your organization's commitment to inclusivity. Elevate your corporate environment with Auri™—where every voice is heard, and every employee feels valued.





## PERFORMING ARTS

### Elevate the Sound Experience at Every Event

Make every seat the best in the house with Auri™, the premier wireless audio streaming solution for entertainment venues. Perfect for theaters, concerts, and live events, Auri™ uses Auracast™ technology to deliver crystal-clear audio directly to attendees' devices, ensuring an immersive experience.

Designed with accessibility in mind, Auri™ connects seamlessly with a dedicated receiver to meet global compliance standards, or Auracast™ compatible end-user devices such as hearing aids, cochlear implants, or earbuds, empowering guests with hearing impairments to fully enjoy the performance. Auri™'s high-quality, low-latency audio enhances sound clarity in every seat, while its multi-channel capability supports different audio feeds for unique viewing options or providing audio description. By incorporating Auri™, entertainment venues can elevate accessibility and engagement, creating memorable, inclusive experiences that keep audiences coming back.



## HOUSE OF WORSHIP

### Facilitating Connection Through Clear Sound

Enhance inclusivity and connection in your house of worship with Auri™, the leading wireless audio solution designed for spiritual gatherings. Auri™ streams high-quality, low-latency audio directly to dedicated receivers or congregants' personal Auracast™ compatible devices, including hearing aids, cochlear implants, and smartphones, ensuring that everyone, especially those with hearing challenges, can fully engage in services.

Powered by advanced Auracast™ broadcast audio, Auri™ provides crystal-clear sound that reaches every corner of the sanctuary, creating a worship experience where all can listen and feel connected. Easy to set up and operate, Auri™ supports multiple audio channels, making it adaptable for various service formats and settings, including multi-lingual services. With Auri™, your congregation can foster a truly inclusive environment, allowing each attendee to experience the fullness of every word and song, strengthening bonds and uplifting spirits.



## GOVERNMENT

### Empowering Clear, Inclusive Communication in Government Spaces

Auri™ is transforming government environments by providing crystal-clear, wireless audio directly to participants' devices, making it ideal for meetings, briefings, and public hearings. Utilizing advanced Auracast™ technology, Auri™ ensures everyone in the room, including those with hearing impairments, can easily engage in discussions and presentations.

With support for hearing aids, cochlear implants, and smartphones, Auri™ enables seamless access to audio, fostering inclusivity and enhancing the flow of communication in important government settings. Easy to deploy and manage, Auri™ is designed for reliability and accessibility, allowing public officials, employees, and citizens to stay connected and informed. As a solution built to meet accessibility standards, Auri™ reinforces your commitment to inclusivity, empowering full participation in every government interaction.



## STADIUMS & ARENAS

### Amplifying the Stadium Experience for Every Fan

Bring every fan closer to the action with Auri™, the ultimate personal assistive listening and audio streaming solution for large stadiums and arenas. Designed to deliver clear, high-quality sound directly to Auracast™ compatible personal devices, Auri™ ensures everyone in the venue—regardless of location or hearing ability—enjoys an immersive experience with every cheer, announcement, and play.

Powered by Auracast™ broadcast audio, Auri™ offers ultra-low latency and multi-channel audio, allowing fans to tune into live commentary, language translation, or enhanced audio from their seats. Easy to manage and deploy across large venues, Auri™ connects seamlessly to Auracast™ compatible hearing aids, cochlear implants, and smartphones, promoting inclusivity for all attendees. With Auri™, stadiums can deliver an unrivaled fan experience, making every game, concert, or event memorable for everyone in the crowd.



## SYSTEM COMPONENTS

### AURI™ TX2N TRANSMITTER

#### Features and Specifications

The Auri™ Tx2N Transmitter\* is the central component of the Auri™ system, built for high-performance, large area assistive listening over Bluetooth LE Audio with Auracast™. Key features include:

**Broadcast Audio Over Bluetooth LE:** This technology supports reliable, low-latency audio distribution with Bluetooth 5.3, which is ideal for assistive listening applications.

**Flexible Audio Inputs:** Dual audio input channels can be configured for mic or line level, with switchable phantom power for mic inputs. Additionally, each input can be configured for Dante® connectivity (optional).

**Optional Dante Input:** An integrated Dante option allows two-channel networked audio via a dedicated RJ45 connection.

**Audio Processing:** Adjustable routing options with AGC (Automatic Gain Control) and low-cut filters for optimized audio output.



#### Repeater Mode for Enhanced Coverage

The Tx2N Transmitter's repeater mode extends the broadcast range and improves signal reliability:

**Enhanced Coverage:** Expand the signal reach to cover larger areas.

**Improve Reliability:** Provides increased reliability in challenging environments, maintaining a stable and clear audio experience.

\* Mounting Kit included for flexible mounting options.

## AURI™ RX1 RECEIVER

Dedicated receivers ensure global compliance with accessibility legislation and a provision for users without their own compatible devices.

**All-day Battery Life** - Receivers will stream audio for over 30 hours, ensuring uninterrupted audio throughout any event.

**Flexible Charging** - Charge in 4 hours using Auri™ docking stations or a standard USB-C power supply.

**Broadcast Library** - Each receiver can store a library of up to 32 preconfigured broadcasts, allowing simple connection to an encrypted broadcasts without password entry.

**Connection Options** - Configure receivers to list available channels or a preset library. Additional options allow auto connection or reconnect to the previous broadcast when powered on.





## DOCKING STATIONS (D4 AND D16)

**Charging and Storage:** Provides organized storage and charging for Auri™ RX1 receivers, supporting up to 4 receivers with the D4 and up to 16 with the D16. This setup keeps devices ready for immediate use, fully charged, and securely stored when not in operation.

**Wall or Surface Mounting:** Designed for versatile installation options, supporting wall or surface mounting to fit into various facility layouts. These mounting options ensure the docking station can be positioned conveniently for easy access.

**Headset Storage:** D16 docking station can be used with the LA-382 cable management unit, keeping accessories organized and available for quick access. This storage feature ensures that all necessary components are in one place, improving efficiency.

**Receiver Management and Configuration Storage:** Docking stations can store a complete receiver configuration, including settings, broadcast library, and the latest firmware update. Choose whether receivers should be automatically updated when docked or manually updated at the push of a button.



**Auri™ D4**  
Docking Station 4



**Auri™ D16**  
Docking Station 16

## AURI™ MANAGER SOFTWARE

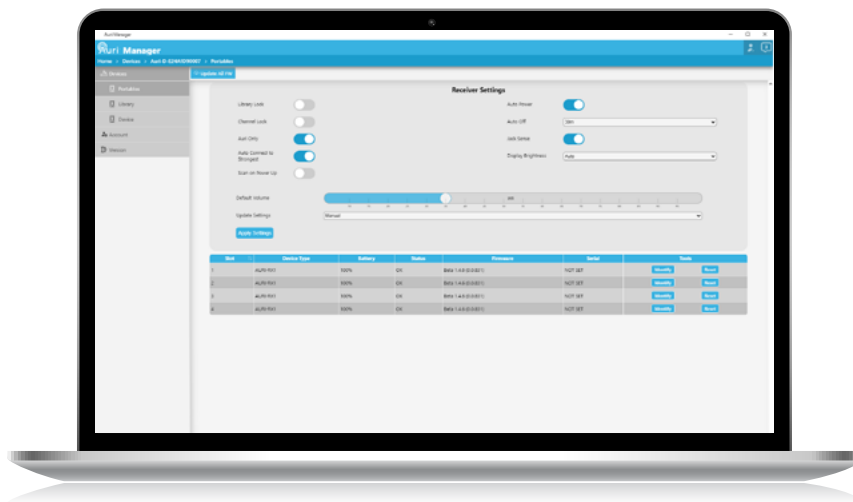
**Device Discovery:** Auri™ Manager will automatically discover any Auri™ transmitters or docking stations which are on the same network

**Management:** From a single device connected directly to your PC to a large venue, Auri™ Manager can control all Auri™ devices from one location. Devices can be grouped by location to keep track of large inventories.

**Network Control and Configuration:** A simple interface that allows easy access to all device settings and quick setup of key parameters.

**Remote Monitoring:** Monitor all components of your Auri™ system from a central location, ensuring device status, firmware versions, and battery levels are all in check.

**Secure:** Devices require authentication and use encrypted network communications to protect your devices from unauthorized changes.



Auri™ Manager  
Software

## PLANNING YOUR SYSTEM AND INSTALLATION CONSIDERATIONS

**Number of Broadcasts:** Just one assistive listening stream, or multiple languages, each Auri™ Transmitter can broadcast up to two streams. If more channels are needed, simply add more transmitters.

**Coverage Area:** For large or complex areas, multiple transmitters may be needed to ensure complete coverage. Consult the [User Manual](#) for more information on range.

**Mounting Location:** Auri™ transmitters should be mounted up high, maximizing the line of sight to as many people as possible. Transmitters can be wall or ceiling-mounted with the universal bracket, compatible with standard electrical back boxes, and VESA 75 for simplified installation.

**Audio Inputs:** The best assistive listening systems start with high-quality audio sources. Define what the audio signal will be for your system, whether that's a microphone, line output from an existing AV system, a Dante feed, or a combination - the TX2Ns flexible routing options cater for multiple use cases.

**Receivers, Docking Stations, and Accessories:** Many regions have laws or standards stipulating the number of dedicated receivers needed for assistive listening systems. Make sure to accommodate your venue's needs with RX1s, docking stations, and a suitable number of neck loops and headphones to give users a choice.

**Configuration:** Connect Auri™ Manager and set up your system, from adjusting audio settings to choosing if your broadcasts are open or password protected.

**Signage:** No assistive listening system is complete without signage. Your visitors need to know that the system is available and what their options are for connecting to it.

## ADDITIONAL RESOURCES

**Datasheets:** <https://www.listentech.com/auri-support/>

**Compliance and Accessibility:** <https://www.listentech.com/global-compliance/>

**Register Your Auracast™ Location:** <https://www.bluetooth.com/auracast/location-registration/>