

# Mars Air Curtain

## APPLICATION PORTFOLIO

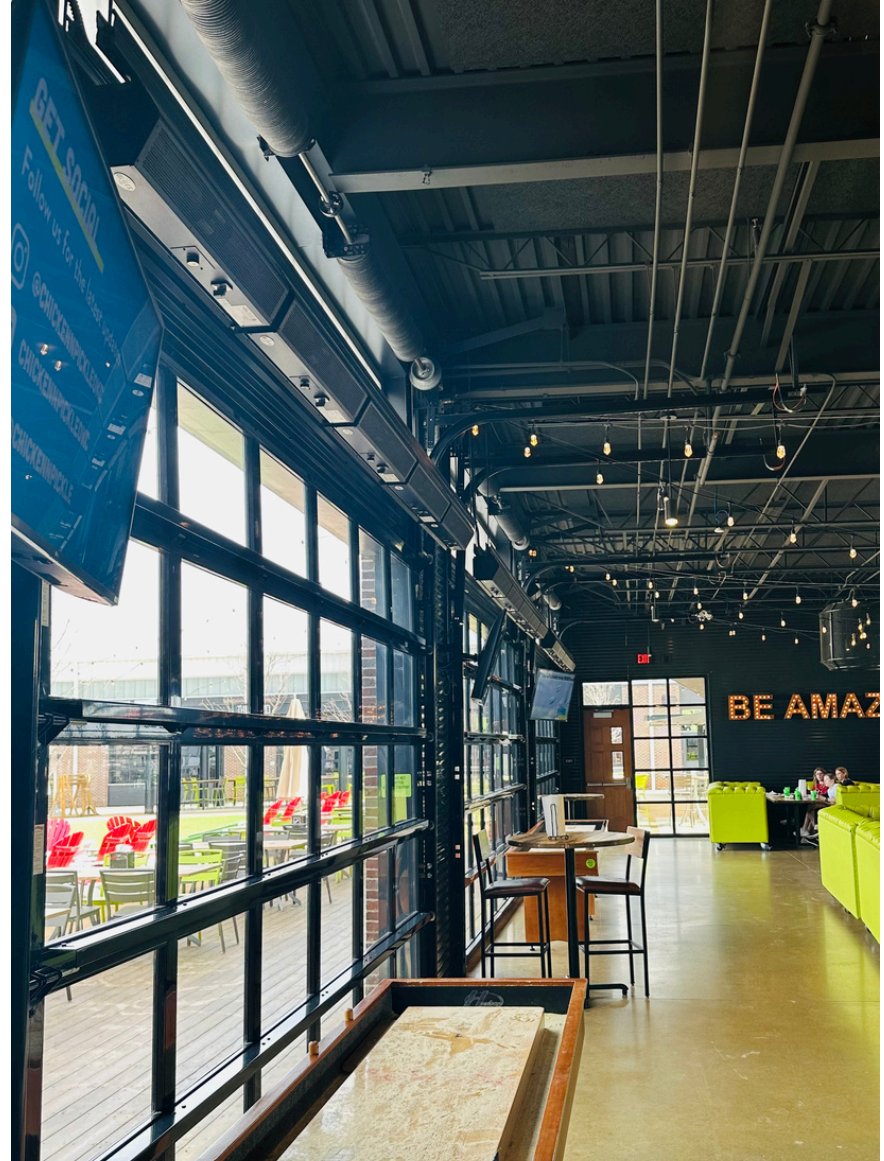


# Mars Air Curtain

## Table of Contents

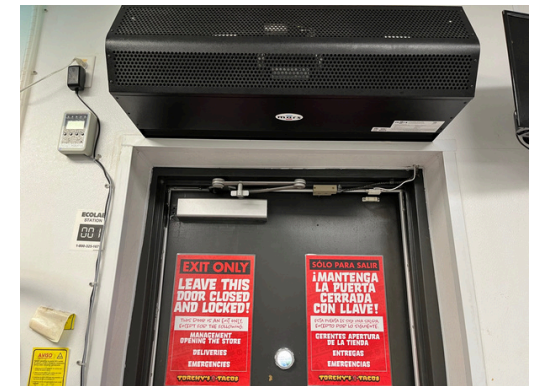
<b>APPLICATIONS</b>	<b>PAGE(S)</b>
Restaurant & Foodservice .....	3-6
Transportation & Terminals .....	7-8
Convenience & Grocery Stores .....	9-10
Manufacturing & Distribution .....	11-12
Refrigeration & Cold Storage .....	13
Health Care & Hospitals .....	14-15
Entertainment Venues.....	16
Specialty Applications.....	17
UVC Applications .....	18
Retail Applications .....	19-20
Outdoor Applications - Awning .....	21
Smoke Chamber Experiment .....	22-23
AMCA Article Experiment .....	24-25
Stay Connected with our Team QR code .....	26

# Restaurant & Foodservice



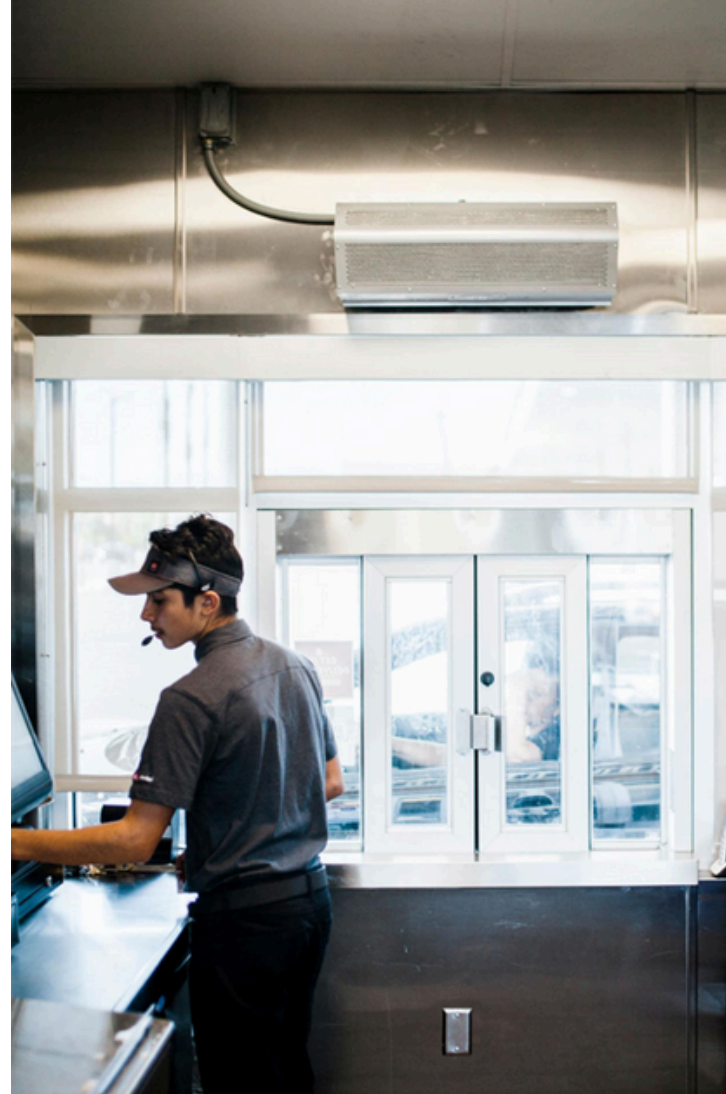
MODEL: LPV2  
CHICKEN N PICKLE | GRAND PRAIRIE, TX

# Restaurant & Foodservice



MODEL: STD2  
TORCHY'S TACOS | STAFFORD, TX

# Restaurant & Foodservice



MODEL: LPV225  
DRIVE-THRU APPLICATIONS

# Restaurant & Foodservice



MODEL: LPV2  
HAWKERS | DEL RAY BEACH, FL

# Transportation & Terminals



MODEL: STD2 ELECTRIC HEAT + MOTION SENSOR  
ATL AIRPORT | ATLANTA, GA

# Transportation & Terminals



MODEL: STD2

PUNTA CANA AIRPORT | PUNTA CANA, DOMINICAN REPUBLIC



# Convenience & Grocery Stores



MODEL: STD272 SS  
TXB GAS STATION | AUSTIN, TX

# Convenience & Grocery Stores



MODEL: STD2 ELECTRIC HEAT  
CIRCLE K GAS STATION | GREEN BAY, WI

# Manufacturing & Distribution



MODEL: STD2

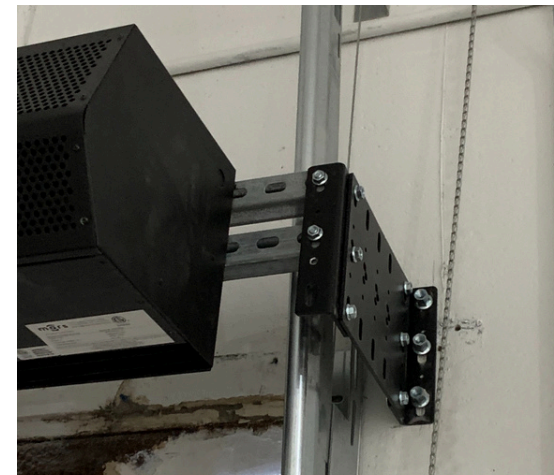
CAMPBELL SOUP COMPANY | NAPOLEON, OH



MODEL: WINDGUARD (BD)

FABRAL INC. | GRIDLEY, IL

# Manufacturing & Distribution



MODEL: LPV2  
CINTAS | MENOMONEE FALLS, WI

[CASE STUDY](#)

# Refrigeration & Cold Storage



MODEL: NH272-2UH-TS + MCPB-2UH



MODEL: STD296-3UG-SS-WD (WASHDOWN DESIGN)



UNIFIED CENTRAL KITCHEN | SACRAMENTO, CA

# Health Care & Hospitals



MODEL: PH10  
BEN TAUB HOSPITAL | HOUSTON, TX

# Health Care & Hospitals



MODEL: QUIETPRO™  
ABBOTT MEDICAL | ALAJUELA, COSTA RICA

# Entertainment Venues



MODEL: STD2

U.S. BANK STADIUM (VIKINGS STADIUM) | MINNEAPOLIS, MINNESOTA

[CASE STUDY](#)



# Specialty Applications

(Dishwasher)



MODEL: STD2 (QUICKDRY DESIGN)  
EMANATE INTER-COMMUNITY HOSPITAL | COVINA, CA

# UVC Applications



MODEL: STD2 UVC  
FOOD BANK CUSTOMER ENTRANCE | HOUSTON, TX

# Retail Applications



MODEL: STD2  
HARLEY DAVIDSON WRIGLEYVILLE | CHICAGO, IL

CASE STUDY

# Retail Applications



MODEL: STD2  
CONTAINER STORE | OMAHA, NE

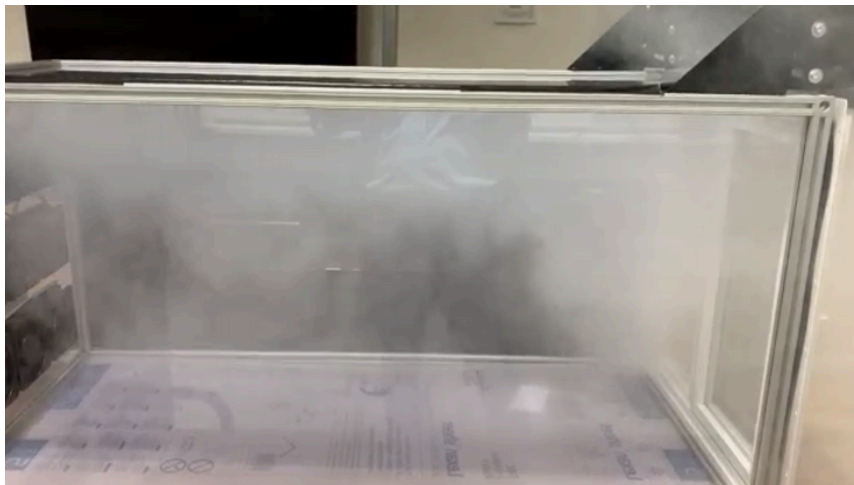
# Outdoor Applications

For outdoor installations, special consideration should be given to protect the air curtain from harsh outdoor elements, such as UV sun rays, snow and rain, to help prolong its useful life.



Harsh weather protective covers are made from industrial-grade steel tubing and thick durable outdoor-rated fade and UV-resistant canvas material, the harsh weather cover minimizes the accumulation of snow, ice, and other debris in and on the top of the units.

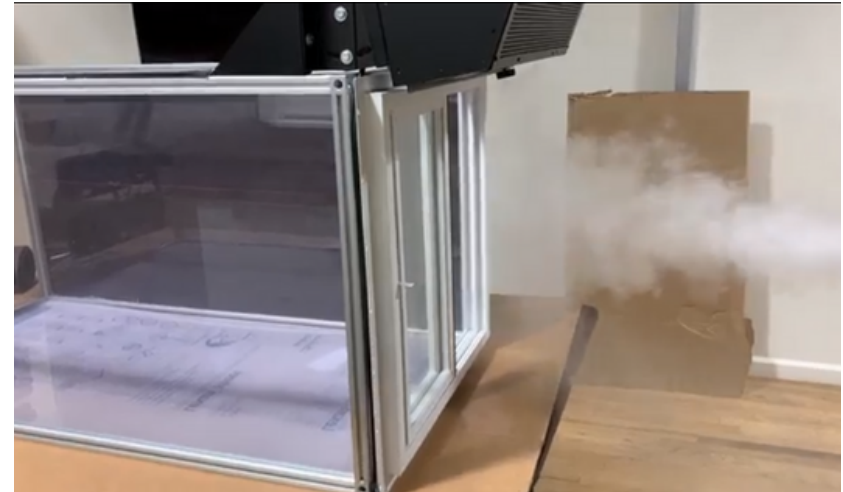
# Smoke Chamber Experiment



**WITH AIR CURTAIN OFF**  
VIDEO DEMO OF AIR CURTAIN IN ACTION

[FULL VIDEO](#)

# Smoke Chamber Experiment

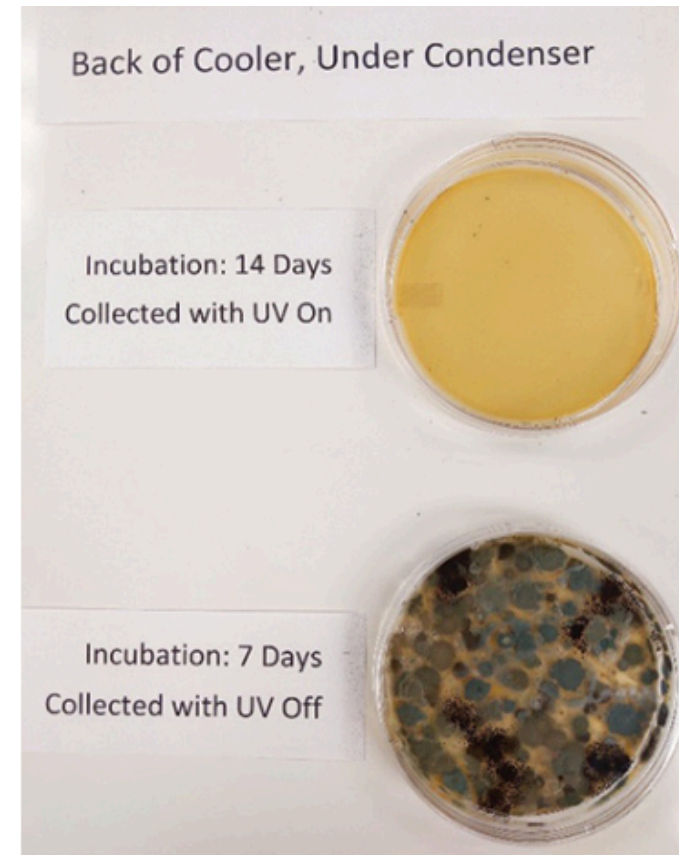
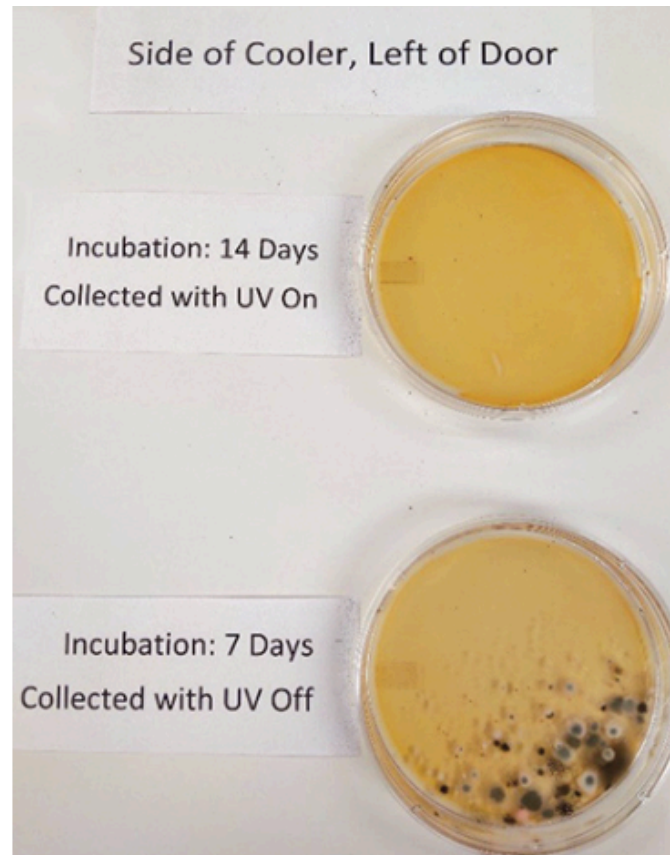
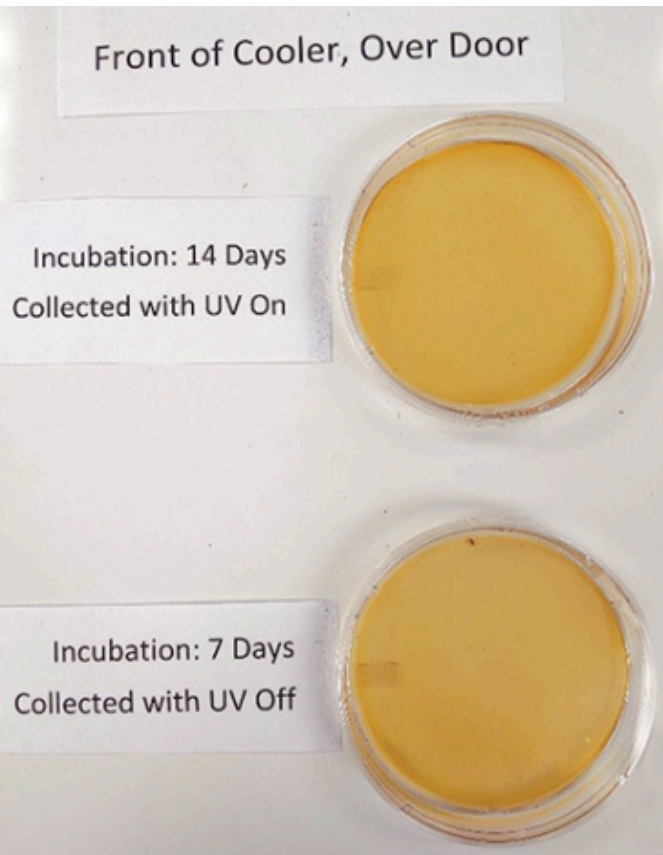


**WITH AIR CURTAIN ON**  
VIDEO DEMO OF AIR CURTAIN IN ACTION

[FULL VIDEO](#)

# Walk-in Cooler Experiment

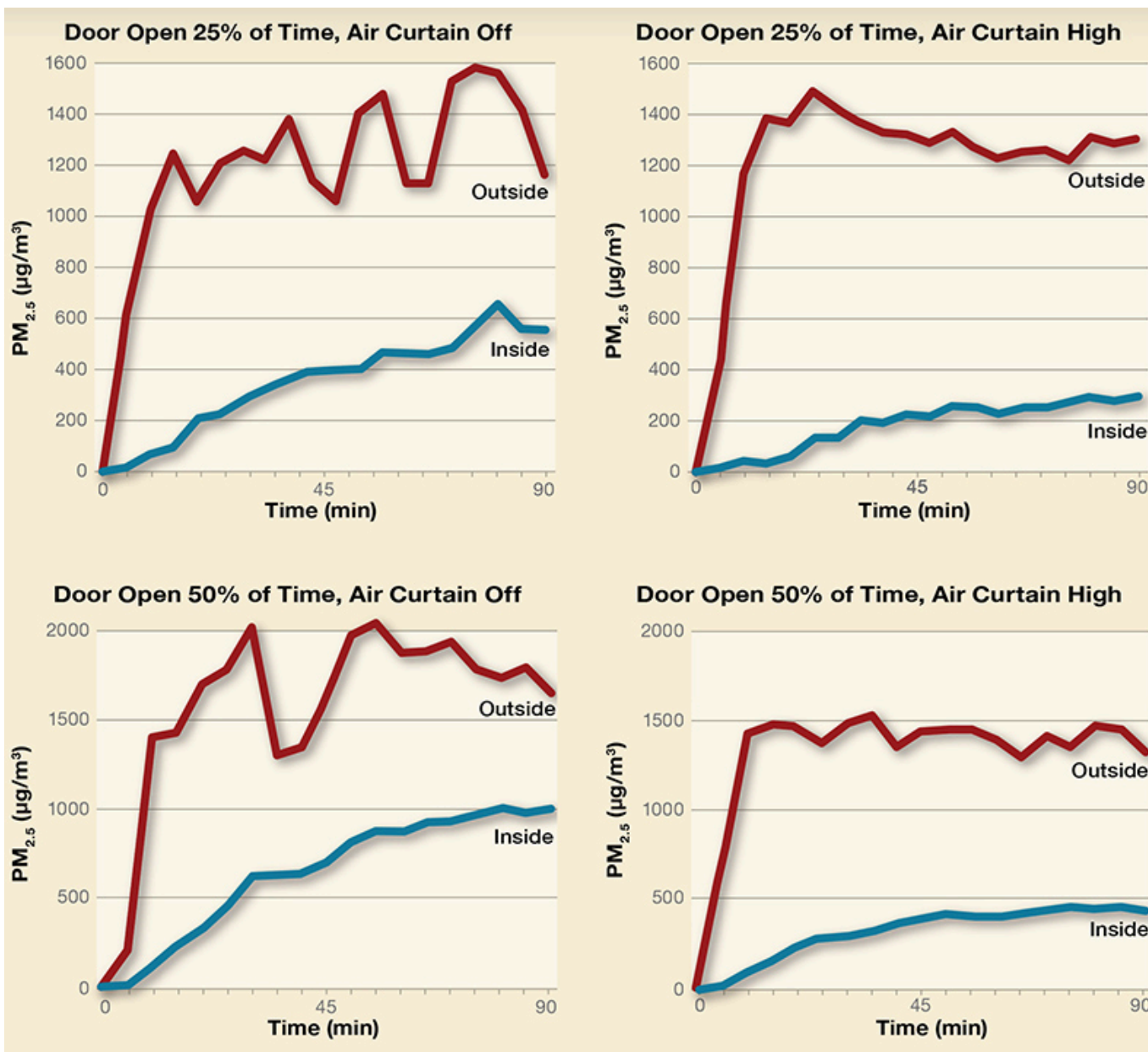
AIR CURTAIN WITH UVC LIGHT EXTENDS THE SHELF LIFE OF PERISHABLE FOOD



ARTICLE



# Wildfire Simulation Particulate Levels



**SUMMARY OF RESULTS:**  
THE BLUE GRAPH SHOWS THE AIR CURTAIN'S EFFECTIVENESS IN PREVENTING THE INFILTRATION OF AIRBORNE PARTICULATES FROM ENTERING THE BUILDING (RED GRAPH).



 ARTICLE



Stay up to date with all future Mars content!  
**@MarsAirSystems:**



**Stay Connected!**