



PNEUMATIC CATALOG

BONOMI
INDUSTRIES SRL

Started in 1954 by a young Silvio Bonomi, Bonomi Industries led product and process innovations of the brass valve industry for over 70 years

Our founder's motto was "Quality and trust". This is the legacy we bring forward every day.





About us

BONOMI INDUSTRIES is an Italian manufacturer of high quality shut-off brass valves, actuators and custom-engineered solutions. Under the RuB brand, its products are globally trusted for their reliability and performance in a variety of applications.

BONOMI INDUSTRIES is part of Hadron group — a private holding company established in 2018 during the strategic reorganization of Rubinetterie Utensilerie Bonomi (RuB), which also led to the creation of Shedstone, a real estate company — BONOMI INDUSTRIES continues to grow and innovate. Started in 1954, with entrepreneurial roots tracing back to 1828, the company upholds the values and tradition of a family business while embracing a vision focused towards the future.

Growth at BONOMI INDUSTRIES is driven by continuous investments in product improvements, advanced machining, assembly, and logistics technologies, as well as expanded manufacturing capabilities, enhanced system interconnectivity, database analysis and strengthened engineering and R&D efforts. At the same time, sustainability — encompassing environmental, social, and governance topics — has always been part of the company's DNA and inspires meaningful actions.

For BONOMI INDUSTRIES, innovation and responsibility go hand in hand. This commitment shapes a journey aimed at safeguarding the environment, empowering people, and fostering resilient governance for a better tomorrow.



Bonomi Industries turns words into actions for all stakeholders
Scan the QR code to discover our values





Companies

RuB valves and actuators are trusted worldwide, installed across five continents and proven in the most demanding applications.

Production takes place entirely at our headquarters, BONOMI INDUSTRIES S.r.l., in Mazzano (Brescia), Italy. Finished products are then distributed globally from Italy and through our international branches. In North America, *RuB, Incorporated* operates from a modern 5.000 sqm (50,000 sqf) facility, handling both assembly and distribution. In Japan, *RuB kk* serves as a strategic presence in a peculiar market.

With a strong global presence, we provide proximity, reliability, and outstanding service to our customers. Our sales team builds lasting partnerships with distributors and OEMs by offering responsive support and technical expertise. Certified, high-quality products, combined with deep knowledge of local cultures and regulations, make BONOMI INDUSTRIES the trusted partner in fluid control solutions.



Bonomi Industries srl

MAZZANO, BS - ITALY
Manufacturing



RuB, Inc.

SHAKOPEE, MN - USA
Distribution



RuB KK

TOKYO - JAPAN
Distribution



RuB, Inc.
SHAKOPEE, MN - USA
Distribution



Bonomi Industries
MAZZANO, BS - ITALY
Manufacturing



RuB KK
TOKYO - JAPAN
Distribution



Quality

Quality you can trust, proven through generations of experience.

From rigorous incoming goods inspections to double leak testing, 24-72 hour valve assessments, and visual inspections for top markets/applications, BONOMI INDUSTRIES ensures consistent reliability and precision in every product. Advanced traceability systems, calibrated instruments, and statistical software enhance quality control throughout the production process.

Our dedicated Quality Control team supports continuous monitoring and improvement, ensuring that each production batch meets exactly applicable standards. Paired with robust testing protocols and expert technical support, we deliver solutions designed to meet the most challenging applications.



Approved by Lloyd's Register Quality Assurance:

ISO 9001:2015 (Quality Management) since 1998.

ISO 14001:2018 (Environmental Management System) since 2021.

ISO 45001:2018 (Occupational Health & Safety) since 2021.



Environment: Air and water are filtered and recovered. Use of recycled environment-friendly packaging materials. Scrap is recycled.



Product Quality Assessment: recognized by certifying bodies in all major industrialized countries worldwide



Safety: compliance with the provisions of decree 81/2008 for the safety system, extensive staff training, and continuous monitoring



Customized products developed by the Engineering Center

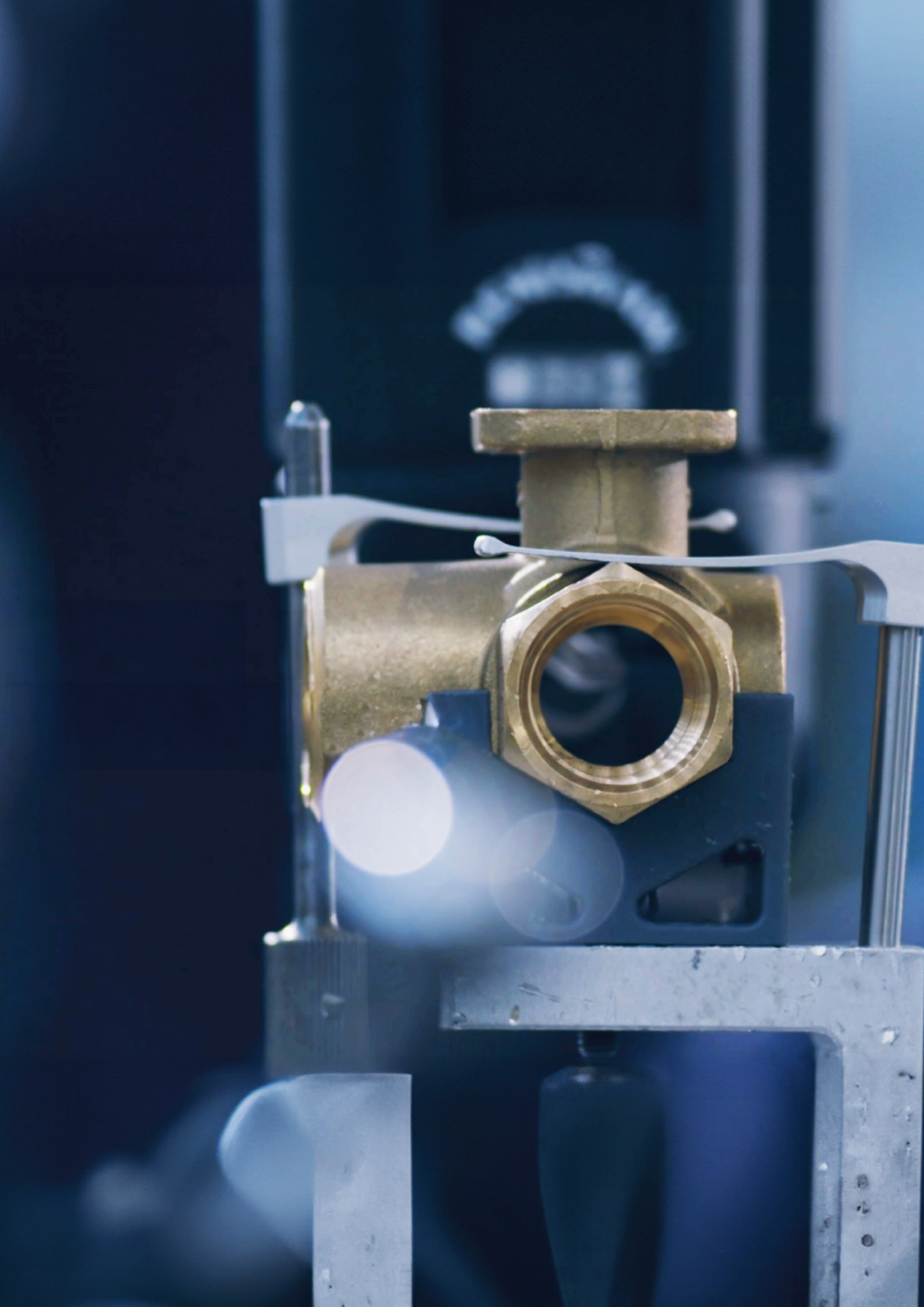


In compliance with the **PED Directive** since 2002



Quality you can trust

See our quality process in action/Experience every step of our quality process





Sustainability

Sustainability has always been a necessity, not a choice. The adoption of sustainable practices at corporate level lays the foundation for creating virtuous cycles that inspire future generations.

Our commitment is stronger than ever, and we're proud to share with you here below figures that mark the tasks we focus on our actions, achievements, and the vision we have for the future. Localized production of electricity is now a reality and we have not been shy with our investments towards clean renewable energy.

Companies are finally waking up to producing their own electricity. Aside from covering the needs of our production manufacturing facility with through solar panels, we constantly reduce energy consumption by investing in smart technology and minimizing heavy material handling.

The diligence with which we strive to make our process and products less impactful on the environment is confirmed by the certifications awarded by international bodies, in particular ISO 14001:2018 and the "silver" medal in the EcoVadis sustainability assessment.

HOW WE WALK THE TALK.

100% of our brass ball valves prevent unnecessary waste – lifetime guaranteed

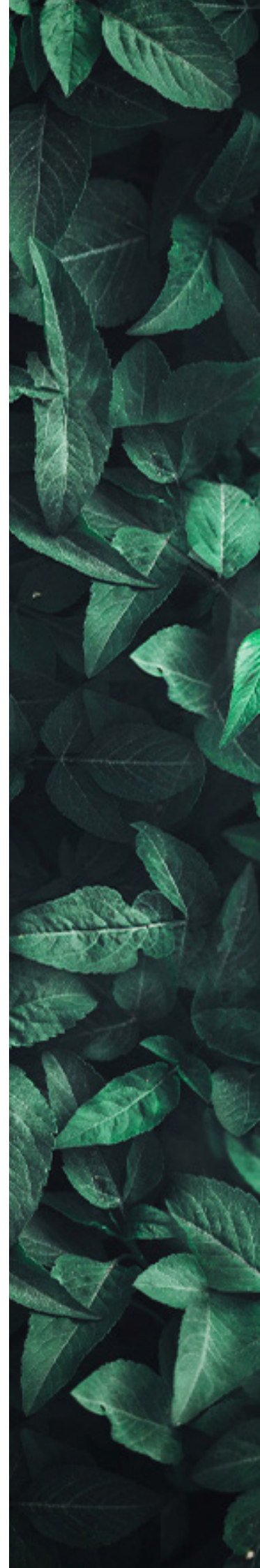
96% manufacturing scrap is reused

30% of energy comes from our own renewable sources

100% cooling waters are recovered and reused



Together, safeguarding our Planet
Learn more about our initiatives.







◀ OEM

Every year, OEMs all over the world rely on RuB custom solutions to reduce leaks, equipment breakages and production downtime. We're heavily invested in OEM customizations with custom-made machinery for innovative products and solutions.

We have proven expertise in solving technical and operational challenges for leading boilers, heat pumps and burners manufacturers, LPG gas tank and system manufacturers, manufacturers of watering systems, fire protection, refrigeration, HVAC manufacturers, marine applications with shipbuilders, compressors, tanks, machine tools manufacturers, filtration, chemical, food processing and pharmaceutical companies.

We are intrigued to learn about your obstacles and bring your custom, top shelf solution to life.

PRIVATE LABEL

We strive to meet the needs of our customers in every way possible. And we do so not only through specifically designed, engineered and manufactured OEM products, but also by customizing standard RuB ball valves.

The possible branding options to choose from include:

- Changing the lever marking to the customer's trademark
- Packing with a custom label
- Customized handle colors and materials
- Customized valve fittings
- Dedicated valve body stamping
- Special marking on the valve body
- Custom installation instructions



OEM solutions, custom made for you

OEMs have a Partner to solve their challenges and develop new products





Certifications

We are proud to offer 100% made-in-Italy shut-off brass valves, actuators, and OEM-engineered products, all manufactured in our ISO 9001:2015 certified headquarters in Brescia, Italy. Since adopting this quality management system in 1992 under Lloyd's Register, we have continuously improved product reliability, performance and traceability.

Our certifications, granted by leading global laboratories and agencies, demonstrate compliance with the highest standards for major applications and markets. Supported by rigorous testing and state of art technology, our products meet the demanding requirements of top manufacturers and distributors worldwide.

PRODUCT TYPE APPROVALS

	Deutsche Vereinigung des Gas und Wasserfaches e.V. Technisch-wissenschaftlicher Verein			Система сертификации ГОСТ Р Госстандарт России	
	Deutsche Vereinigung des Gas und Wasserfaches			The Australian Gas Association	
	Deutsche Vereinigung des Gas und Wasserfaches Hygiene			OSHA Compliant	
	Schweizerischer Verein des Gas und Wasserfaches			Factory Mutual Research Corporation	
	Attestation de Conformité Sanitaire			Underwriter Laboratories Inc.	
	ARGB-KVBG			CRN-TSSA	
	Water Regulations Advisory Scheme			CSA International for Drinking Water to NSF/ANSI 61- NSF/ANSI 372	
	British Standards Institution			CSA - Canadian Standards Association	
	Kiwa KUKreg4			KSFD -Kuwait Fire Service Directorate	
	Ri.se. / Boverket			LIA - L.P Gas Instruments Inspections Association	
	Kiwa - Swedcert			General Directorate of Civil Defence	

COMPLIANCES

	ROHS			PED 2014/68/UE by ICIM (0425)	PED
	Reach declaration	Reach		Декларация соответствия	EAC



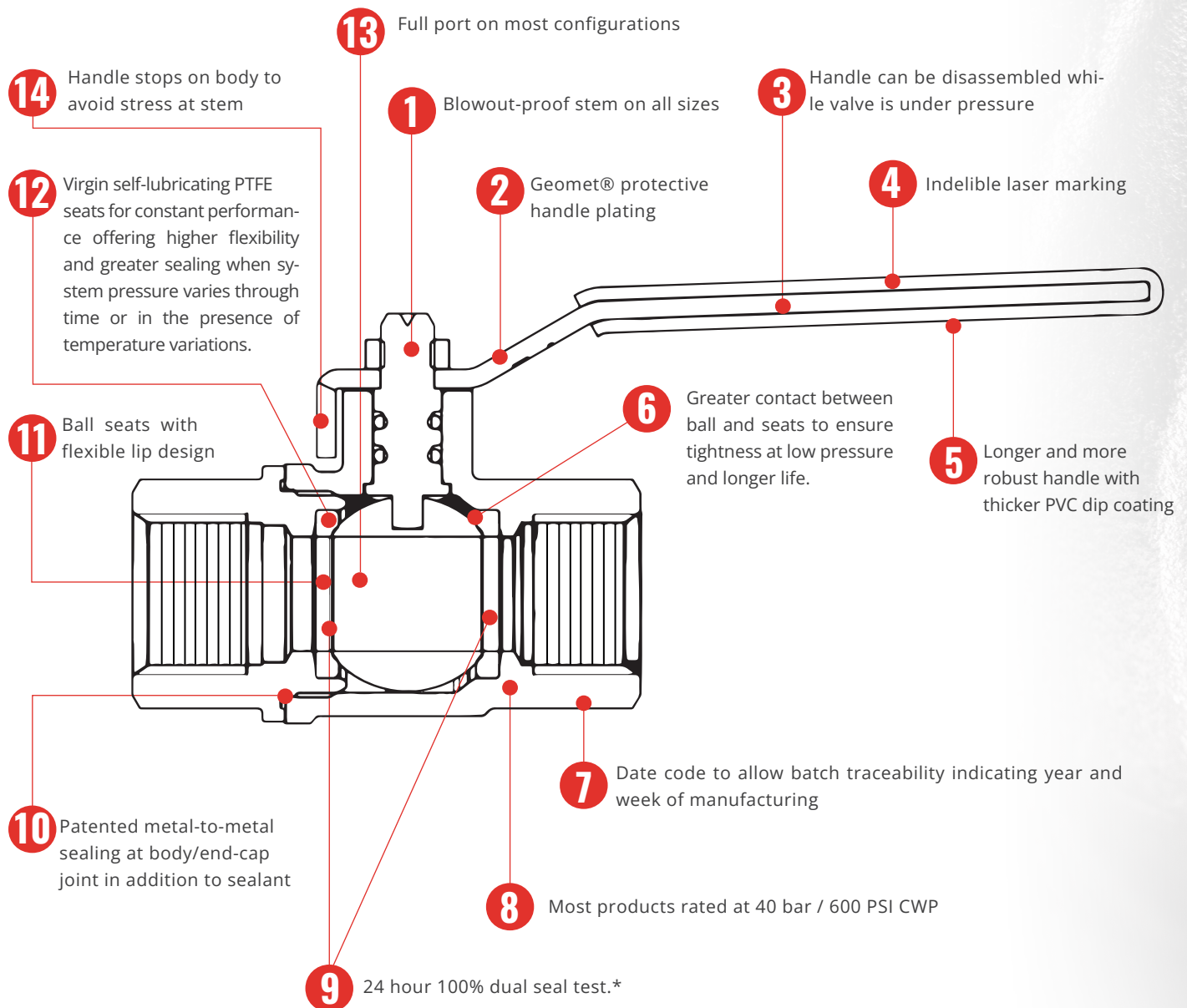
We developed and constantly innovate strict protocols and processes
Discover all the certifications and awards received from international bodies



PATENTED
NO. 1421306

OPEN
SHUT

RuB valve features



RuB seal test

Valve in half open position is pressurized at 6 bar (87 psig), then closed, trapping compressed air in between ball seats and stem sealing. After adequate preset time, based upon valve size, any leaks are verified using extremely accurate electronic sensors and any defective valve is automatically rejected; all valves passing this initial seal test are filled with compressed air again and remain closed and under pressure for minimum 24 hours; after 24 hours, the valves go back again under the same accurate a new set of electronic pressure sensors and any leaking valve is automatically rejected.

* Certain products are not suitable for double seal test



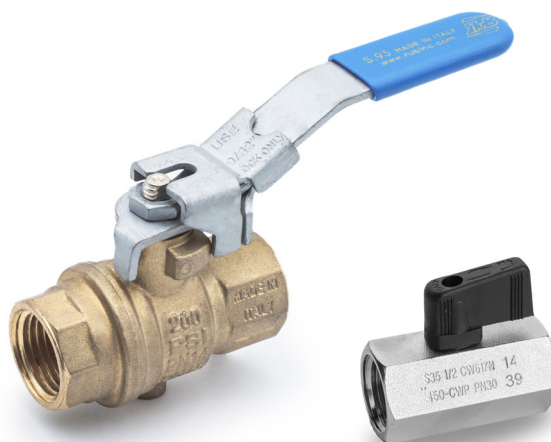
Our solutions come with an added benefit: maximizing your revenue
Scan the QR code to discover our products



PNEUMATIC

RuB solutions for pneumatic applications are engineered to deliver reliable performance ranging from industrial to domestic settings. Designed to control compressed air and inert gases, RuB ball valves ensure efficiency, safety, and precision in fluid management.





s.34 1/8" - 1/2" ISO 228 mini ball valve, suitable for panel mounting	Page 20
s.34 MF 1/8" - 1/2" ISO 228 mini ball valve, suitable for panel mounting	Page 22
s.34 NPT 1/8" - 1/2" mini ball valve, suitable for panel mounting	Page 24
s.35 high pressure 1/8" - 1/2" ISO 228 mini ball valve	Page 26
s.35 M/F high pressure 1/8" - 1/2" ISO 228 mini ball valve	Page 28
s.35 NPT high pressure 1/8" - 1/2" mini ball valve	Page 30
s.35 BSPT high pressure 1/8" - 1/2" mini ball valve	Page 32
s.35 BSPT M/F high pressure 1/8" - 1/2" mini ball valve	Page 34
s.39 forged, micro 1/8" - 1/4" ISO 228 high pressure ball valve	Page 36
s.39 NPT forged, micro 1/8" - 1/4" high pressure ball valve	Page 38
s.39 BSPT forged, micro 1/8" - 1/4" high pressure ball valve	Page 40
s.93 downstream exhaust 1/4" - 2" EN 10226-1 with patented locking handle	Page 42
s.93 NPT downstream exhaust 1/4" - 2" with patented locking handle	Page 44
s.93 BSPT downstream exhaust 1/2" - 2" with patented locking handle	Page 46



s.34

**Female/Female
1/8" - 1/2"**

ISO 228 mini ball valve, suitable for panel mounting



QUALITY

- Each valve is seal tested for maximum safety
- Dual sealing system allows valve to be operated in either direction making installation easier
- No metal-to-metal moving parts
- No maintenance ever required
- Handle clearly shows ball position
- Silicone-free lubricant on all seals
- Chrome plated brass ball for longer life

BODY

- One piece drawn sand blasted brass body incorporating stem neck which provides excellent guidance of the stem
- Finest brass according to EN 12164 specification

STEM

- Maintenance-free, double FPM O-rings at the stem for maximum safety

SEALING

- Pure PTFE self-lubricating seats with flexible-lip design

THREADS

- ISO 228 parallel female by female threads

HANDLE

- Lever and T-handle clearly show ball position
- Nylon black lever or T-handle removable with valve in service

WORKING PRESSURE & TEMPERATURE

- 15 bar (200 PSI) non-shock cold working pressure
- -20°C to +90°C (-4°F to +200°F)
- **WARNING:** freezing of the fluid in the installation may severely damage the valve

PED DIRECTIVE

- The product meets the requirements of PED Directive 2014/68/UE and according to art.4 par.3, it does not require CE marking

APPROVED BY OR IN COMPLIANCE WITH

- GOST-R (Russia)
- RoHS Compliant (EU)
- EAC – Declaration of conformity (Russia, Kazakhstan, Belarus)

NOTE: approvals apply to specific configurations/sizes only.

OPTIONS

- Screw driver or wrench operated
- Yellow lever or T-handle



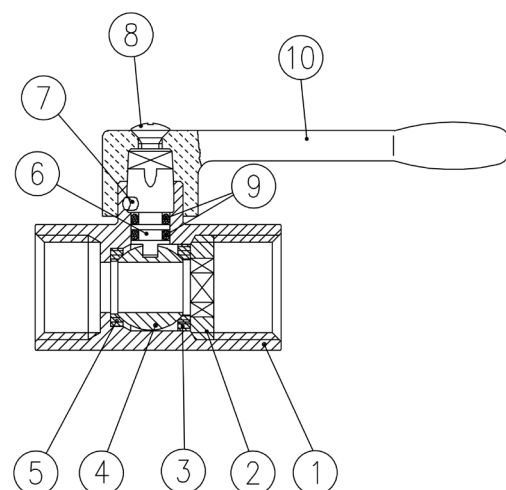
s.34 XCES34 - 5466

Each user should perform his own tests to find out the suitability for his particular application. BONOMI INDUSTRIES makes no warranty, express or implied, as to the shape, fit or function of a product for any application. Contact us or consult with your supplier for additional information on the suitability of the BONOMI INDUSTRIES products with your specific field of use.

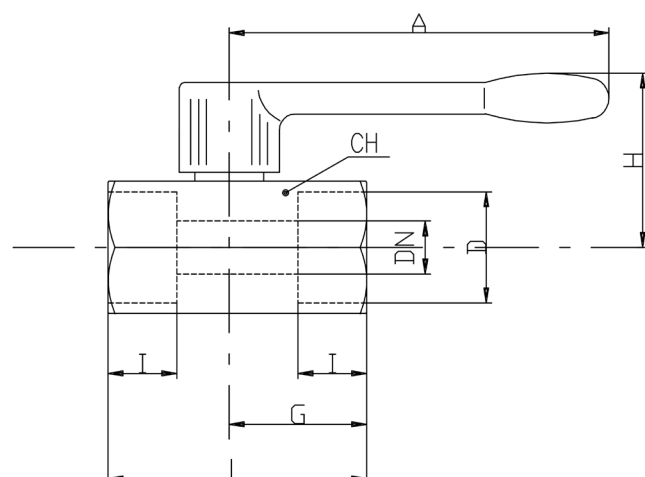


PNEUMATIC

	Part description	Q.ty	Material
1	Chrome plated body	1	CW617N
2	Retainer nut	1	CW617N
3	Retainer seat	1	PTFE
4	Chrome plated ball	1	CW617N
5	Body seat	1	PTFE
6	Unplated stem	1	CW617N
7	Pin	1	1.4301 / AISI304
8	Zinc plated screw	1	C4C (EN10263-2)
9	O-Ring	2	FPM
10	Black handle	1	Nylon glass filled 30%

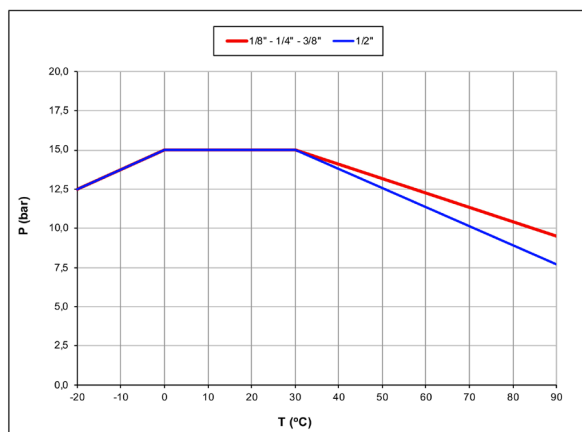


Code	S34AF0	S34BF0	S34CF0	S34DF0
D (inch)	1/8"	1/4"	3/8"	1/2"
DN (mm)	6	8	8	10
I (mm)	10	11	11	13
L (mm)	41.5	41.5	41.5	49
G (mm)	22	22	22	26
A (mm)	72	72	72	72
H (mm)	30.5	30.5	30.5	32.5
CH (mm)	21	21	21	25
Kv (m³/h)	1.7	4.2	3.6	5

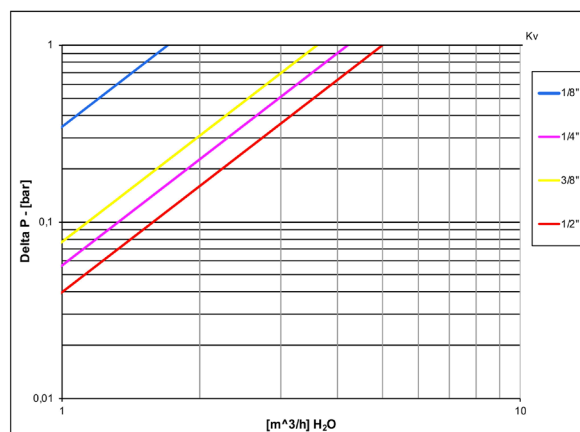


DN shows the nominal flow diameter.

PRESSURE-TEMPERATURE CHART



PRESSURE DROP CHART





s.34 M/F

**Male/Female
1/8" - 1/2"
ISO 228 mini ball valve, suitable for panel mounting**



QUALITY

- Each valve is seal tested for maximum safety
- Dual sealing system allows valve to be operated in either direction making installation easier
- No metal-to-metal moving parts
- No maintenance ever required
- Handle clearly shows ball position
- Silicone-free lubricant on all seals
- Chrome plated brass ball for longer life

BODY

- One piece drawn sand blasted brass body incorporating stem neck which provides excellent guidance of the stem
- Finest brass according to EN 12164 specification

STEM

- Maintenance-free, double FPM O-rings at the stem for maximum safety

SEALING

- Pure PTFE self-lubricating seats with flexible-lip design

THREADS

- ISO 228 parallel male by female threads

HANDLE

- Lever and T-handle clearly show ball position
- Nylon black lever or T-handle removable with valve in service

WORKING PRESSURE & TEMPERATURE

- 15 bar (200 PSI) non-shock cold working pressure
- -20°C to +90°C (-4°F to +200°F)
- **WARNING:** freezing of the fluid in the installation may severely damage the valve

PED DIRECTIVE

- The product meets the requirements of PED Directive 2014/68/UE and according to art.4 par.3, it does not require CE marking

APPROVED BY OR IN COMPLIANCE WITH

- GOST-R (Russia)
- RoHS Compliant (EU)
- EAC – Declaration of conformity (Russia, Kazakhstan, Belarus)

NOTE: approvals apply to specific configurations/sizes only.

OPTIONS

- Female by female threads
- Screw driver or wrench operated
- Yellow lever or T-handle



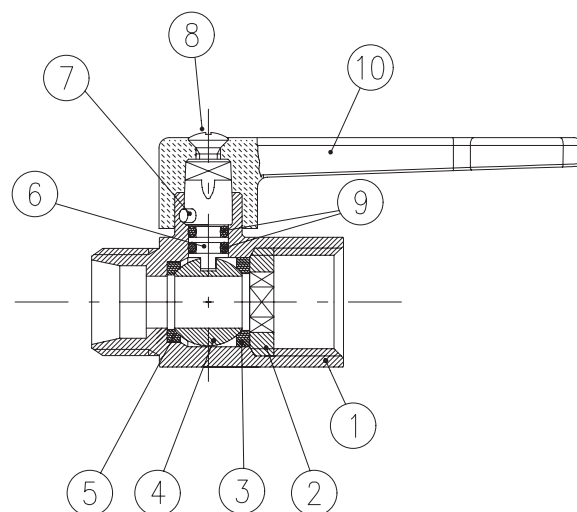
s.34 MF XCES34M - 5466

Each user should perform his own tests to find out the suitability for his particular application. BONOMI INDUSTRIES makes no warranty, express or implied, as to the shape, fit or function of a product for any application. Contact us or consult with your supplier for additional information on the suitability of the BONOMI INDUSTRIES products with your specific field of use.

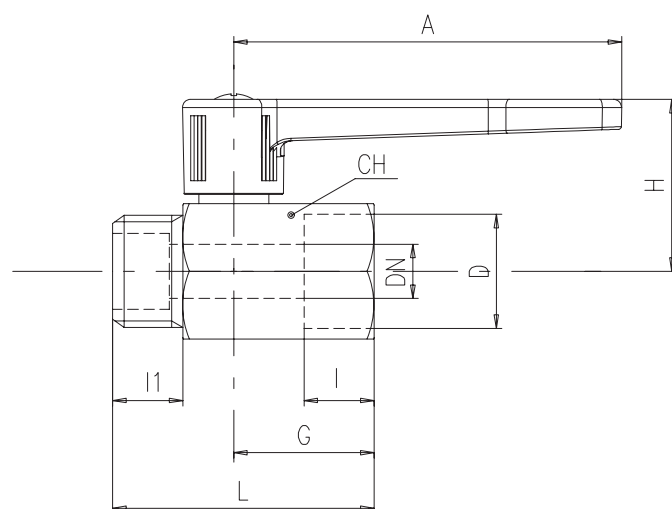


PNEUMATIC

Part description		Q.ty	Material
1	Chrome plated body	1	CW617N
2	Retainer nut	1	CW617N
3	Retainer seat	1	PTFE
4	Chrome plated ball	1	CW617N
5	Body seat	1	PTFE
6	Unplated stem	1	CW617N
7	Pin	1	1.4301 / AISI304
8	Zinc plated screw	1	CB4FF (EN10263-2)
9	O-Ring	2	FPM
10	Black handle	1	Nylon glass filled 30%

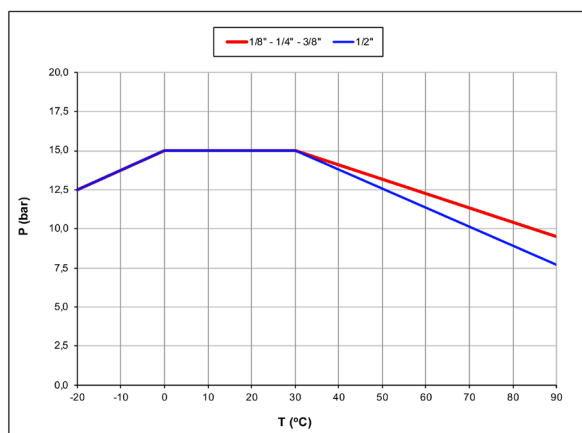


Code	S34AM0	S34BM0	S34CM0	S34DM0
D (inch)	1/8"	1/4"	3/8"	1/2"
DN (mm)	5	8	8	10
I (mm)	10	11	11	13
I 1 (mm)	9.5	9.5	9.5	13
L (mm)	41.5	41.5	41.5	49
G (mm)	22	22	22	26
A (mm)	72	72	72	72
H (mm)	30.5	30.5	30.5	32.5
CH (mm)	21	21	21	25
Kv (m³/h)	1.7	4.2	3.6	5

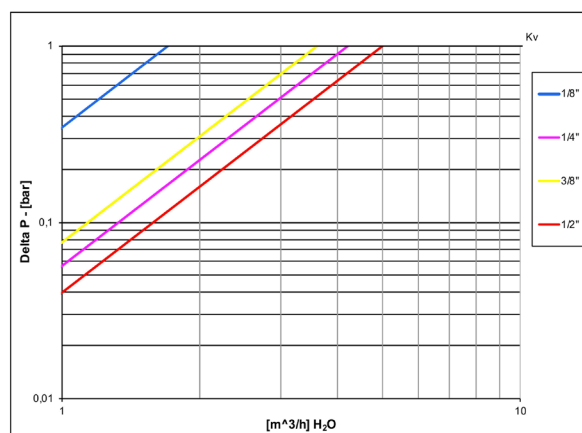


DN shows the nominal flow diameter.

PRESSURE-TEMPERATURE CHART



PRESSURE DROP CHART





s.34 NPT

**Female/Female
1/8" - 1/2"
mini ball valve, suitable for panel mounting**



QUALITY

- 24h 100% seal test guaranteed
- Dual sealing system allows valve to be operated in either direction making installation easier
- No metal-to-metal moving parts
- No maintenance ever required
- Handle clearly shows ball position
- Silicone-free lubricant on all seals
- Chrome plated brass ball for longer life

BODY

- One piece drawn sand blasted brass body incorporating stem neck which provides excellent guidance of the stem
- Finest brass according to EN 12164 specification

STEM

- Maintenance-free, double FPM O-rings at the stem for maximum safety

SEALING

- Pure PTFE self-lubricating seats with flexible-lip design

THREADS

- NPT taper ANSI B.1.20.1 female by female threads

HANDLE

- Lever and T-handle clearly show ball position
- Nylon black lever or T-handle removable with valve in service

WORKING PRESSURE & TEMPERATURE

- 200 PSI (15 bar) non-shock cold working pressure
- -4°F to +200°F (-20°C to +90°C)
- **WARNING:** freezing of the fluid in the installation may severely damage the valve

PED DIRECTIVE

- The product meets the requirements of PED Directive 2014/68/UE and according to art.4 par.3, it does not require CE marking

APPROVED BY OR IN COMPLIANCE WITH

- GOST-R (Russia)
- RoHS Compliant (EU)

NOTE: approvals apply to specific configurations/sizes only.

OPTIONS

- Male by female threads
- Screw driver or wrench operated
- Yellow lever or T-handle



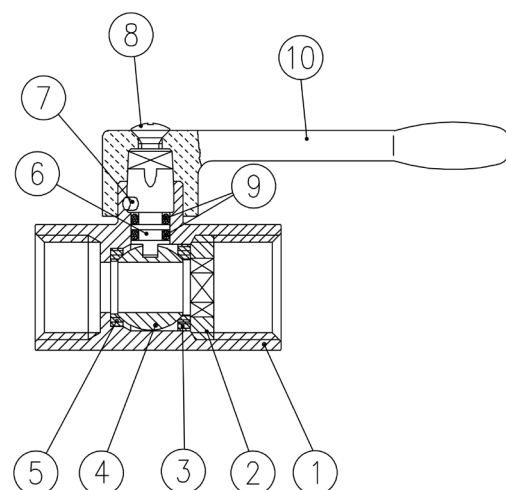
s.34 NPT XCES34N - 5466

Each user should perform his own tests to find out the suitability for his particular application. BONOMI INDUSTRIES makes no warranty, express or implied, as to the shape, fit or function of a product for any application. Contact us or consult with your supplier for additional information on the suitability of the BONOMI INDUSTRIES products with your specific field of use.

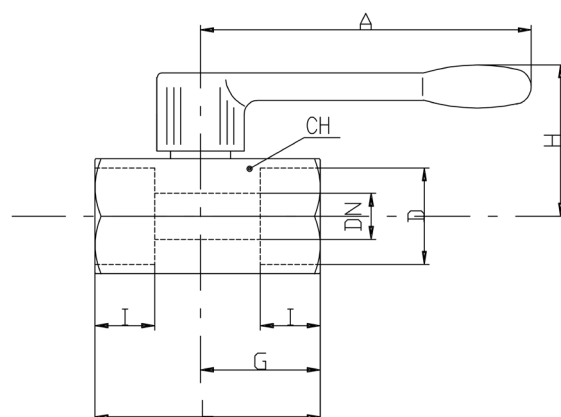


PNEUMATIC

Part description		Q.ty	Material
1	Chrome plated body	1	CW617N
2	Retainer nut	1	CW617N
3	Retainer seat	1	PTFE
4	Chrome plated ball	1	CW617N
5	Body seat	1	PTFE
6	Unplated stem	1	CW617N
7	Pin	1	1.4301 / AISI304
8	Zinc plated screw	1	C4C
9	O-Ring	2	FPM
10	Black handle	1	Nylon glass filled 30%

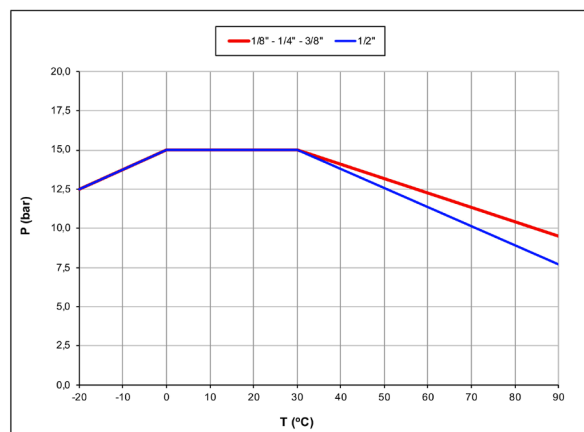


Code	S34AX0	S34BX0	S34CX0	S34DX0
D (inch)	1/8"	1/4"	3/8"	1/2"
DN (inch)	0.236	0.314	0.314	0.393
I (inch)	0.354	0.472	0.472	0.610
L (inch)	1.712	1.712	1.712	2.106
G (inch)	0.905	0.905	0.905	1.102
A (inch)	2.834	2.834	2.834	2.834
H (inch)	1.200	1.200	1.200	1.279
CH (inch)	0.826	0.826	0.826	0.984
Cv (GPM)	2.0	4.9	4.2	5.8

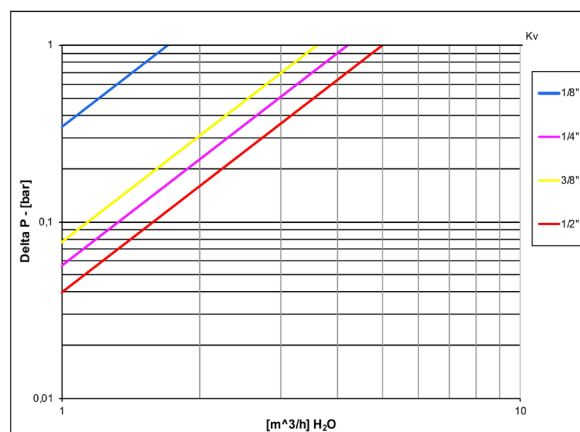


DN shows the nominal flow diameter.

PRESSURE-TEMPERATURE CHART



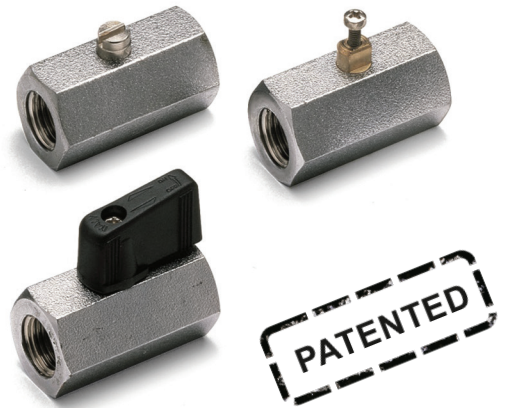
PRESSURE DROP CHART





S.35 high pressure

Female/Female
1/8" - 1/2"
ISO 228 mini ball valve



QUALITY

- Dual sealing system allows valve to be operated in either direction making installation easier
- No metal-to-metal moving parts
- No maintenance ever required
- Silicone-free lubricant on all seals
- Chrome plated brass ball for longer life
- Each valve is seal tested for maximum safety
- Handle/ stem clearly shows ball position

BODY

- One piece drawn sand blasted brass body with extremely compact design
- Finest brass according to EN 12164 specification
- Patent n. 7011-B/89

STEM

- Blowout-proof brass stem with FPM O-ring
- Maintenance-free thanks to FPM O-ring at the stem for maximum safety

SEALING

- Pure PTFE self-lubricating seats with flexible-lip design

THREADS

- ISO 228 parallel female by female threads

HANDLE

- Reinforced nylon black wedge handle removable with valve in service
- **WARNING:** do not exceed reasonable temperature and/or electrical load

WORKING PRESSURE & TEMPERATURE

- 30 bar (450 PSI) non-shock cold working pressure
- -20°C to +90°C (-4°F to +200°F)
- +120°C (+250°F) screw driver version and metal wedge handle
- **WARNING:** freezing of the fluid in the installation may severely damage the valve

UPON REQUEST

- Aluminum body
- ISO 7/1 BSPT taper threads
- Dezincification resistant brass CW602N

PED DIRECTIVE

- The product meets the requirements of PED Directive 2014/68/UE and according to art.4 par.3, it does not require CE marking

APPROVED BY OR IN COMPLIANCE WITH

- GOST-R (Russia)
- RoHS Compliant (EU)
- EAC – Declaration of conformity (Russia, Kazakhstan, Belarus)

NOTE: approvals apply to specific configurations/sizes only.

OPTIONS

- Male by female threads
- Screw driver or wrench operated
- Nylon wedge handle yellow, red or green
- Metal wedge handle available in colours red, black, yellow, green, light blue, chrome plated
- Grey wedge handle in Grivory® -high performing polymer
- Additional connection options on demand



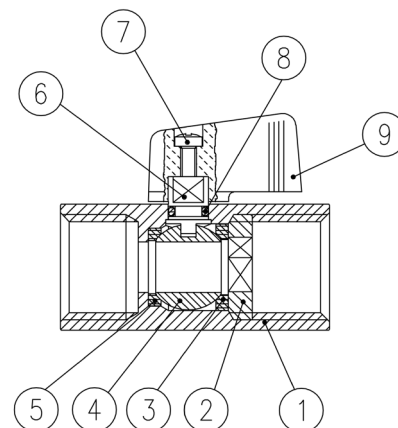
s.35 XCES35 - 5466

Each user should perform his own tests to find out the suitability for his particular application. BONOMI INDUSTRIES makes no warranty, express or implied, as to the shape, fit or function of a product for any application. Contact us or consult with your supplier for additional information on the suitability of the BONOMI INDUSTRIES products with your specific field of use.

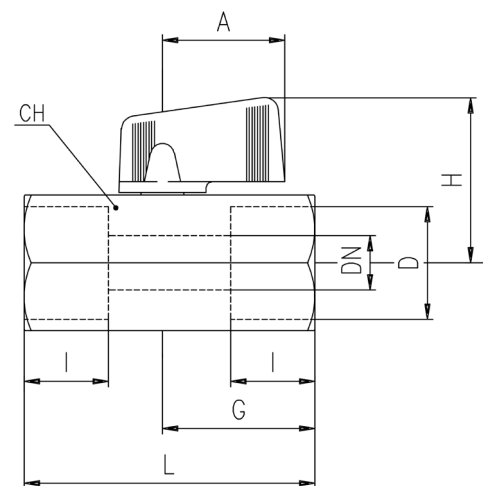


PNEUMATIC

Part description		Q.ty	Material
1	Chrome plated body	1	CW617N
2	Retainer nut	1	CW617N
3	Retainer seat	1	PTFE
4	Chrome plated ball	1	CW617N
5	Body seat	1	PTFE
6	Unplated stem	1	CW617N
7	Zinc plated screw	1	CB4FF (EN10263-2)
8	O-Ring	1	FPM
9	Black handle	1	Nylon glass filled 30%

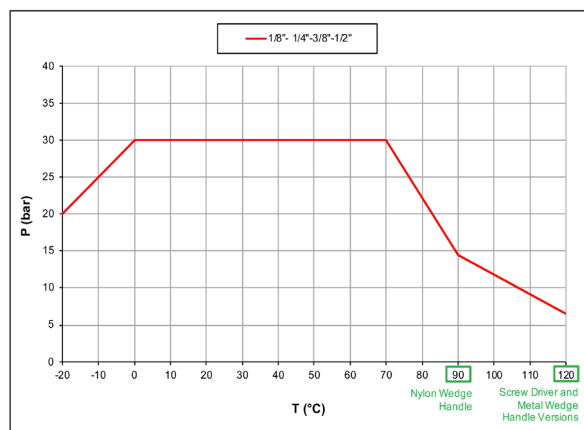


Code	S35AF0	S35BF0	S35CF0	S35DF0
D (inch)	1/8"	1/4"	3/8"	1/2"
DN (mm)	6	8	8	10
I (mm)	10	11	11	13
L (mm)	41.5	41.5	41.5	49
G (mm)	22	22	22	26
A (mm)	22.5	22.5	22.5	22.5
H (mm)	31	31	31	33
CH (mm)	21	21	21	25
Kv (m³/h)	1.7	4.2	3.6	5

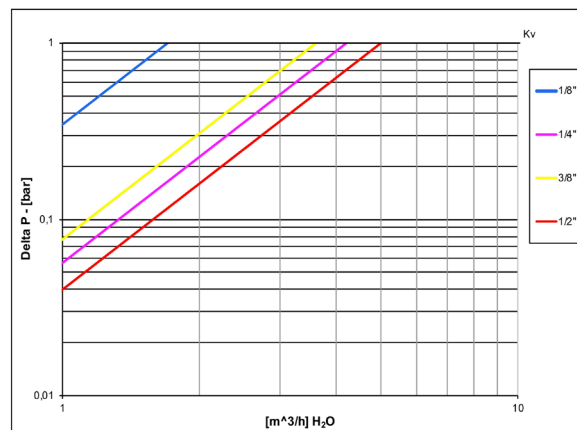


DN shows the nominal flow diameter.

PRESSURE-TEMPERATURE CHART



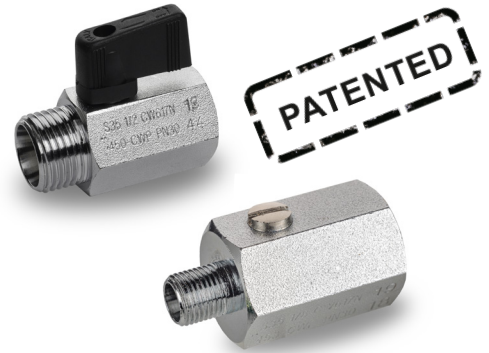
PRESSURE DROP CHART





s.35 M/F high pressure

1/8" - 1/2"
mini ball valve



QUALITY

- Dual sealing system allows valve to be operated in either direction making installation easier
- No metal-to-metal moving parts
- No maintenance ever required
- Silicone-free lubricant on all seals
- Chrome plated brass ball for longer life
- Each valve is seal tested for maximum safety
- Handle/ stem clearly shows ball position

BODY

- One piece drawn sand blasted brass body with extremely compact design
- Finest brass according to EN 12164 specification
- Patent n. 7011-B/89

STEM

- Blowout-proof brass stem with FPM O-ring
- Maintenance-free thanks to FPM O-ring at the stem for maximum safety

SEALING

- Pure PTFE self-lubricating seats with flexible-lip design

THREADS

- ISO 228 parallel male by female threads

HANDLE

- Reinforced nylon black wedge handle removable with valve in service
- **WARNING:** do not exceed reasonable temperature and/or electrical load

WORKING PRESSURE & TEMPERATURE

- 30 bar (450 PSI) non-shock cold working pressure
- -20°C to +90°C (-4°F to +200°F)
- +120°C (+250°F) screw driver version and metal wedge handle
- **WARNING:** freezing of the fluid in the installation may severely damage the valve

UPON REQUEST

- Aluminum body
- ISO 7/1 BSPT taper threads
- Dezincification resistant brass CW602N

PED DIRECTIVE

- The product meets the requirements of PED Directive 2014/68/UE and according to art.4 par.3, it does not require CE marking

APPROVED BY OR IN COMPLIANCE WITH

- GOST-R (Russia)
- RoHS Compliant (EU)
- EAC – Declaration of conformity (Russia, Kazakhstan, Belarus)

NOTE: approvals apply to specific configurations/sizes only.

OPTIONS

- Screw driver or wrench operated
- Nylon wedge handle yellow, red or green
- Metal wedge handle available in colours red, black, yellow, green, light blue, chrome plated
- Grey wedge handle in Grivory® -high performing polymer



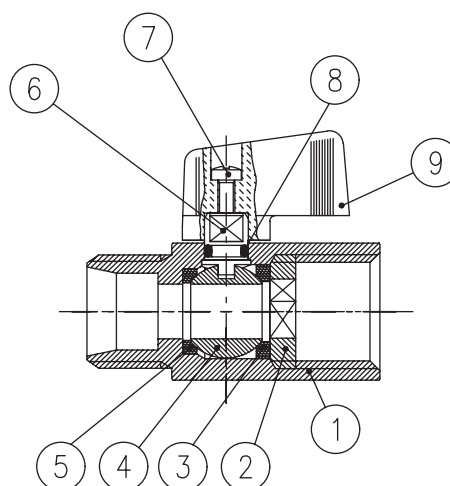
s.35 MF XCES3520 - 0

Each user should perform his own tests to find out the suitability for his particular application. BONOMI INDUSTRIES makes no warranty, express or implied, as to the shape, fit or function of a product for any application. Contact us or consult with your supplier for additional information on the suitability of the BONOMI INDUSTRIES products with your specific field of use.

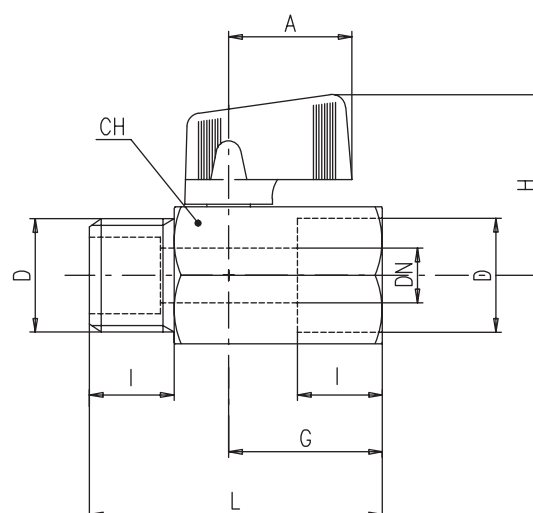


PNEUMATIC

	Part description	Q.ty	Material
1	Chrome plated body	1	CW617N
2	Retainer nut	1	CW617N
3	Retainer seat	1	PTFE
4	Chrome plated ball	1	CW617N
5	Body seat	1	PTFE
6	Unplated stem	1	CW617N
7	Zinc plated screw	1	C10C (EN10263-2)
8	O-Ring	1	FPM
9	Black handle	1	Nylon glass filled 30%

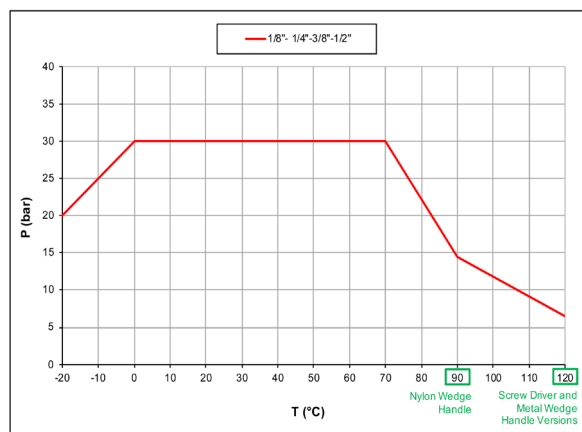


Code	S35AM0	S35BM0	S35CM0	S35DM0
D (inch)	1/8"	1/4"	3/8"	1/2"
DN (mm)	5	8	8	10
I (mm)	10	11	11	13
L (mm)	41.5	41.5	41.5	49
G (mm)	22	22	22	26
A (mm)	22.5	22.5	22.5	22.5
H (mm)	31	31	31	33
CH (mm)	21	21	21	25
Kv (m³/h)	1.7	4.2	3.6	5

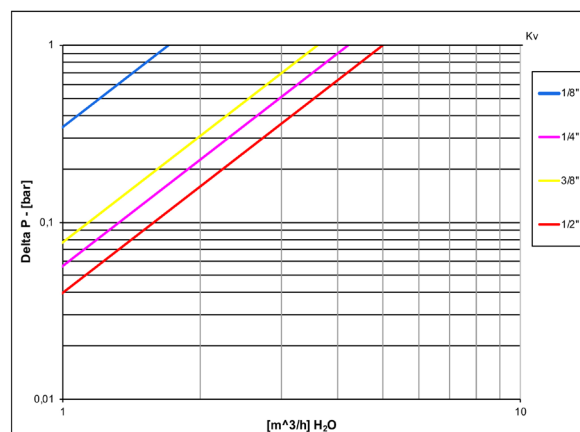


DN shows the nominal flow diameter.

PRESSURE-TEMPERATURE CHART



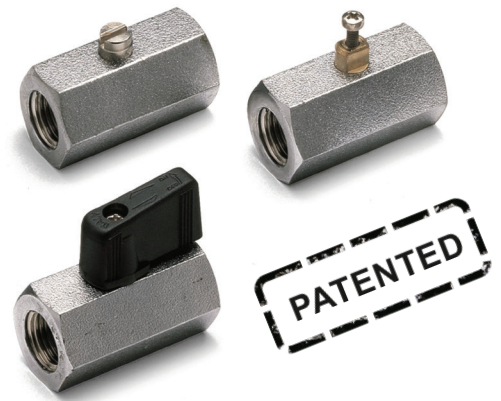
PRESSURE DROP CHART





s.35 NPT high pressure

**Female/Female
1/8" - 1/2"
mini ball valve**



QUALITY

- Dual sealing system allows valve to be operated in either direction making installation easier
- No metal-to-metal moving parts
- No maintenance ever required
- Silicone-free lubricant on all seals
- Chrome plated brass ball for longer life
- Each valve is seal tested for maximum safety
- Handle/ stem clearly shows ball position

BODY

- One piece drawn sand blasted brass body with extremely compact design
- Finest brass according to EN 12164 specification
- Patent n. 7011-B/89

STEM

- Blowout-proof brass stem with FPM O-ring
- Maintenance-free thanks to FPM O-ring at the stem for maximum safety

SEALING

- Pure PTFE self-lubricating seats with flexible-lip design

THREADS

- NPT taper ANSI B.1.20.1 threads

HANDLE

- Reinforced nylon black wedge handle removable with valve in service
- **WARNING:** do not exceed reasonable temperature and/or electrical load

WORKING PRESSURE & TEMPERATURE

- 450 PSI (30 bar) non-shock cold working pressure
- -4°F to +200°F (-20°C to +90°C)
- +250°F (+120°C) screw driver version and metal wedge handle
- **WARNING:** freezing of the fluid in the installation may severely damage the valve

UPON REQUEST

- Aluminum body
- ISO 7/1 BSPT taper threads
- Dezincification resistant brass CW602N

PED DIRECTIVE

- The product meets the requirements of PED Directive 2014/68/UE and according to art.4 par.3, it does not require CE marking

APPROVED BY OR IN COMPLIANCE WITH

- GOST-R (Russia)
- RoHS Compliant (EU)

NOTE: approvals apply to specific configurations/sizes only.

OPTIONS

- Male by female threads
- Screw driver or wrench operated
- Nylon wedge handle yellow, red or green
- Metal wedge handle available in colours red, black, yellow, green, light blue, chrome plated
- Grey wedge handle in Grivory® -high performing polymer
- Additional connection options on demand

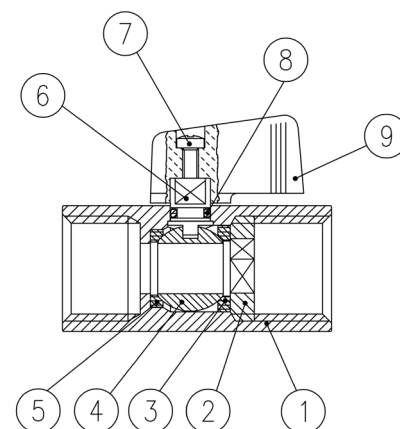


s.35 NPT XCES35N - 5466

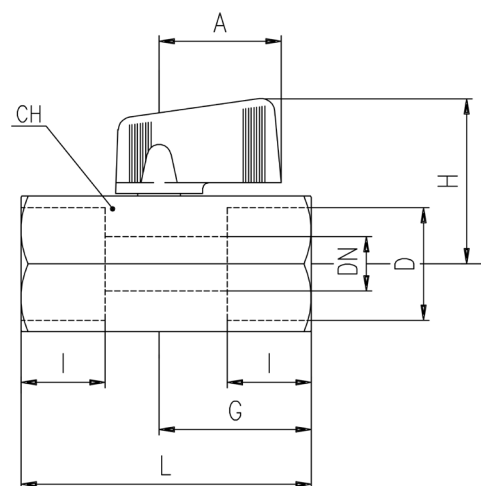
Each user should perform his own tests to find out the suitability for his particular application. BONOMI INDUSTRIES makes no warranty, express or implied, as to the shape, fit or function of a product for any application. Contact us or consult with your supplier for additional information on the suitability of the BONOMI INDUSTRIES products with your specific field of use.



	Part description	Q.ty	Material
1	Chrome plated body	1	CW617N
2	Retainer nut	1	CW617N
3	Retainer seat	1	PTFE
4	Chrome plated ball	1	CW617N
5	Body seat	1	PTFE
6	Unplated stem	1	CW617N
7	Zinc plated screw	1	CB4FF (EN10263-2)
8	O-Ring	1	FPM
9	Black handle	1	Nylon glass filled 30%

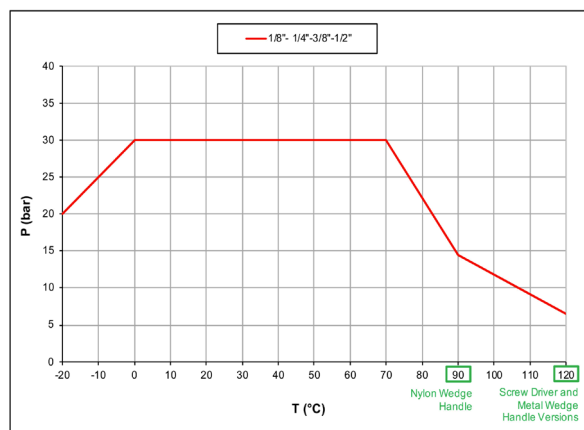


Code	S35AX0	S35BX0	S35CX0	S35DX0
D (inch)	1/8"	1/4"	3/8"	1/2"
DN (inch)	0.236	0.314	0.314	0.393
I (inch)	0.354	0.472	0.472	0.610
L (inch)	1.712	1.712	1.712	2.106
G (inch)	0.905	0.905	0.905	1.102
A (inch)	0.885	0.885	0.885	0.885
H (inch)	1.220	1.220	1.220	1.299
CH (inch)	0.826	0.826	0.826	0.984
Cv (GPM)	2.0	4.9	4.2	5.8

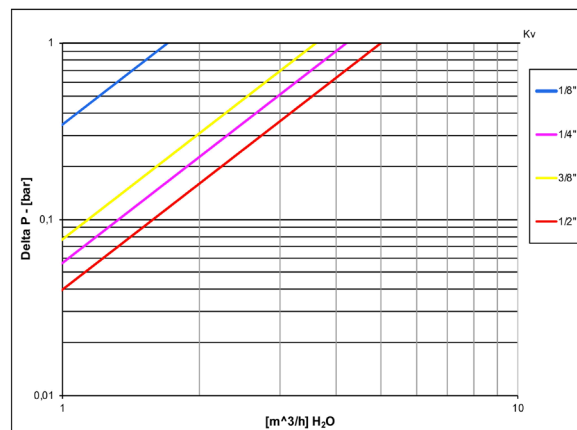


DN shows the nominal flow diameter.

PRESSURE-TEMPERATURE CHART



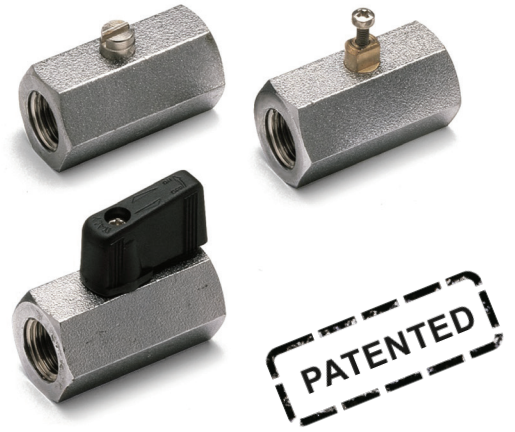
PRESSURE DROP CHART





s.35 BSPT high pressure

Female/Female
1/8" - 1/2"
ISO 7/1, BS21 mini ball valve



QUALITY

- Dual sealing system allows valve to be operated in either direction making installation easier
- No metal-to-metal moving parts
- No maintenance ever required
- Silicone-free lubricant on all seals
- Chrome plated brass ball for longer life
- Each valve is seal tested for maximum safety
- Handle/ stem clearly shows ball position

BODY

- One piece drawn sand blasted brass body with extremely compact design
- Finest brass according to EN 12164 specification
- Patent n. 7011-B/89

STEM

- Blowout-proof brass stem with FPM O-ring
- Maintenance-free thanks to FPM O-ring at the stem for maximum safety

SEALING

- Pure PTFE self-lubricating seats with flexible-lip design

THREADS

- ISO 7/1 BSPT taper threads

HANDLE

- Reinforced nylon black wedge handle removable with valve in service
- **WARNING:** do not exceed reasonable temperature and/or electrical load

WORKING PRESSURE & TEMPERATURE

- 30 bar (450 PSI) non-shock cold working pressure
- -20°C to +90°C (-4°F to +200°F)
- +120°C (+250°F) screw driver version and metal wedge handle
- **WARNING:** freezing of the fluid in the installation may severely damage the valve

UPON REQUEST

- Aluminum body
- Dezincification resistant brass CW602N

PED DIRECTIVE

- The product meets the requirements of PED Directive 2014/68/UE and according to art.4 par.3, it does not require CE marking

APPROVED BY OR IN COMPLIANCE WITH

- GOST-R (Russia)
- RoHS Compliant (EU)

NOTE: approvals apply to specific configurations/sizes only.

OPTIONS

- Male by female threads
- Screw driver or wrench operated
- Nylon wedge handle yellow, red or green
- Metal wedge handle available in colours red, black, yellow, green, light blue, chrome plated
- Grey wedge handle in Grivory® -high performing polymer
- Additional connection options on demand



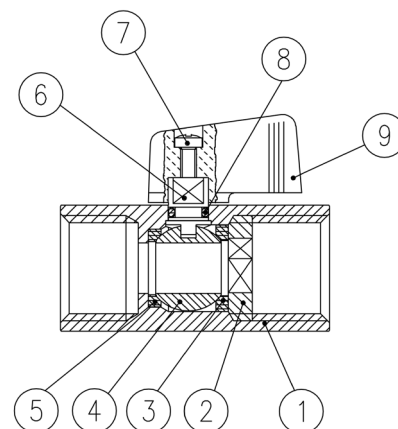
s.35 BSPT XCES35B - 5466

Each user should perform his own tests to find out the suitability for his particular application. BONOMI INDUSTRIES makes no warranty, express or implied, as to the shape, fit or function of a product for any application. Contact us or consult with your supplier for additional information on the suitability of the BONOMI INDUSTRIES products with your specific field of use.

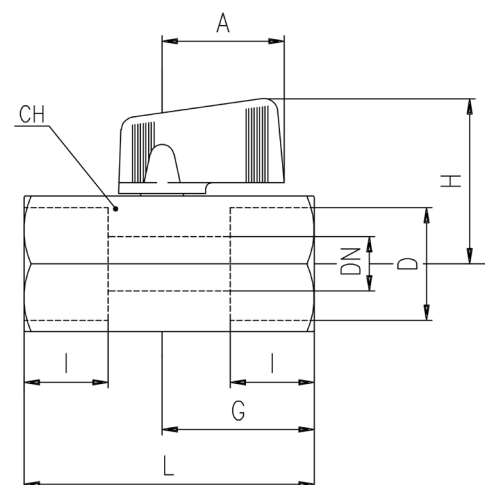


PNEUMATIC

	Part description	Q.ty	Material
1	Chrome plated body	1	CW617N
2	Retainer nut	1	CW617N
3	Retainer seat	1	PTFE
4	Chrome plated ball	1	CW617N
5	Body seat	1	PTFE
6	Unplated stem	1	CW617N
7	Zinc plated screw	1	C10C (EN10263-2)
8	O-Ring	1	FPM
9	Black handle	1	Nylon glass filled 30%

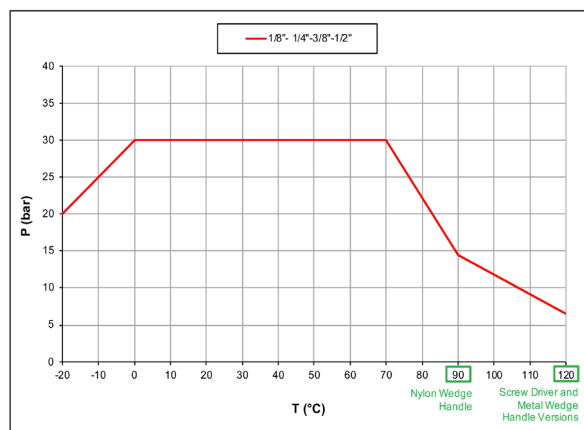


Code	S35AW0	S35BW0	S35CW0	S35DW0
D (inch)	1/8"	1/4"	3/8"	1/2"
DN (mm)	6	8	8	10
I (mm)	11	12	12	15.5
L (mm)	43.5	43.5	43.5	53.5
G (mm)	23	23	23	28
A (mm)	22.5	22.5	22.5	22.5
H (mm)	31	31	31	33
CH (mm)	21	21	21	25
Kv (m³/h)	1.7	4.2	3.6	5

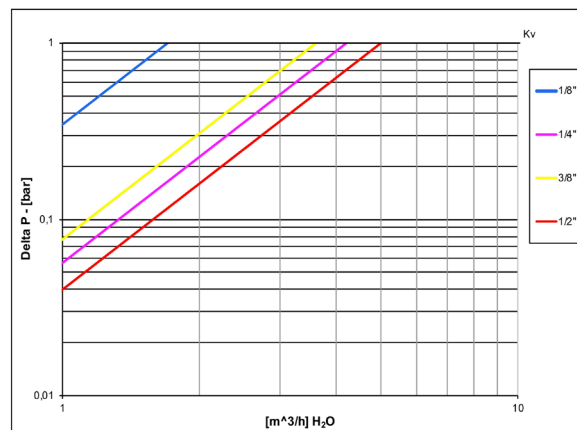


DN shows the nominal flow diameter.

PRESSURE-TEMPERATURE CHART



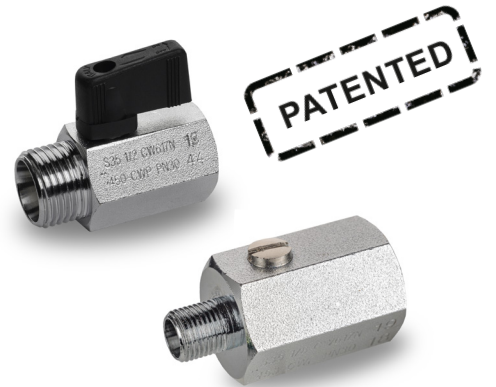
PRESSURE DROP CHART





s.35 BSPT M/F high pressure

1/8" - 1/2"
mini ball valve
ISO 7/1, BS21



PATENTED



QUALITY

- Dual sealing system allows valve to be operated in either direction making installation easier
- No metal-to-metal moving parts
- No maintenance ever required
- Silicone-free lubricant on all seals
- Chrome plated brass ball for longer life
- Each valve is seal tested for maximum safety
- Handle/ stem clearly shows ball position

BODY

- One piece drawn sand blasted brass body with extremely compact design
- Finest brass according to EN 12164 specification
- Patent n. 7011-B/89

STEM

- Blowout-proof brass stem with FPM O-ring

SEALING

- Pure PTFE self-lubricating seats with flexible-lip design

THREADS

- ISO7/1, BS 21 taper female by female threads

HANDLE

- Reinforced nylon black wedge handle removable with valve in service
- **WARNING:** do not exceed reasonable temperature and/or electrical load

WORKING PRESSURE & TEMPERATURE

- 30 bar (450 PSI) non-shock cold working pressure
- -20°C to +90°C (-4°F to +200°F)
- +120°C (+250°F) screw driver version and metal wedge handle
- **WARNING:** freezing of the fluid in the installation may severely damage the valve

UPON REQUEST

- Aluminum body
- Dezincification resistant brass CW602N

PED DIRECTIVE

- The product meets the requirements of PED Directive 2014/68/UE and according to art.4 par.3, it does not require CE marking

APPROVED BY OR IN COMPLIANCE WITH

- GOST-R (Russia)
- RoHS Compliant (EU)

NOTE: approvals apply to specific configurations/sizes only.

OPTIONS

- Screw driver or wrench operated
- Nylon wedge handle yellow, red or green
- Metal wedge handle available in colours red, black, yellow, green, light blue, chrome plated
- Grey wedge handle in Grivory® -high performing polymer

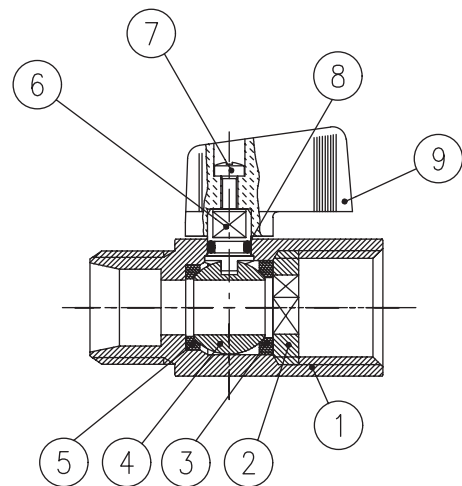


s.35 MF BSPT XCES35MB - 5466

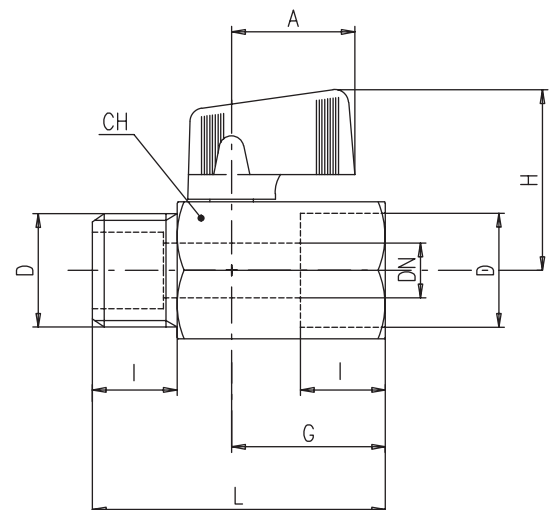
Each user should perform his own tests to find out the suitability for his particular application. BONOMI INDUSTRIES makes no warranty, express or implied, as to the shape, fit or function of a product for any application. Contact us or consult with your supplier for additional information on the suitability of the BONOMI INDUSTRIES products with your specific field of use.



	Part description	Q.ty	Material
1	Chrome plated body	1	CW617N
2	Retainer nut	1	CW617N
3	Retainer seat	1	PTFE
4	Chrome plated ball	1	CW617N
5	Body seat	1	PTFE
6	Unplated stem	1	CW617N
7	Zinc plated screw	1	C10C (EN10263-2)
8	O-Ring	1	FPM
9	Black handle	1	Nylon glass filled 30%

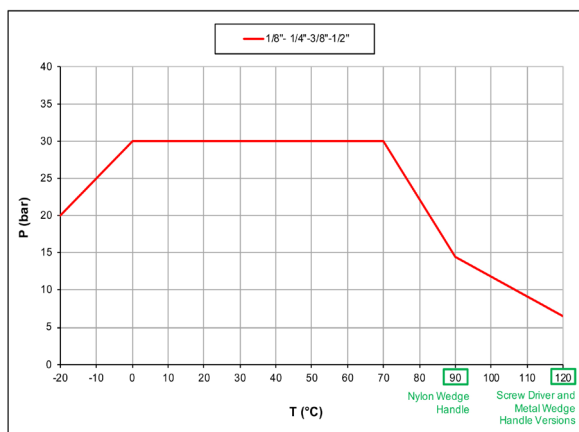


Code	S35AJ0	S35BJ0	S35CJ0	S35DJ0
D (inch)	1/8"	1/4"	3/8"	1/2"
DN (mm)	5	8	8	10
I (mm)	11	12	12	15.5
L (mm)	43.5	43.5	43.5	53.5
G (mm)	23	23	23	28
A (mm)	22.5	22.5	22.5	22.5
H (mm)	31	31	31	33
CH (mm)	21	21	21	25
Kv (m³/h)	1.7	4.2	3.6	5

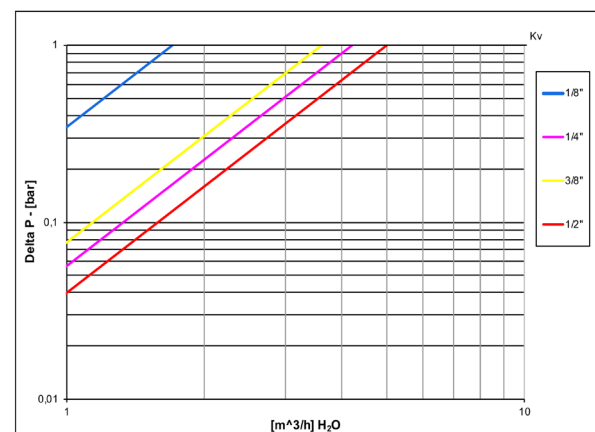


DN shows the nominal flow diameter.

PRESSURE-TEMPERATURE CHART



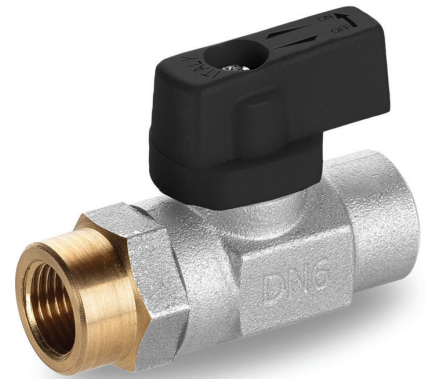
PRESSURE DROP CHART





S.39 forged, micro

Female/Female
1/8" - 1/4"
ISO 228, high pressure ball valve



QUALITY

- Dual sealing system allows valve to be operated in either direction making installation easier
- No metal-to-metal moving parts
- No maintenance ever required
- Silicone-free lubricant on all seals
- Chrome plated brass ball for longer life
- Each valve is seal tested for maximum safety
- Handle stops on body to avoid stresses at stem
- Handle / stem clearly shows ball position

BODY

- Hot forged sand blasted brass body
- Finest brass according to EN 12165 specification

STEM

- Blowout-proof brass stem
- Maintenance-free, double FPM O-ring at the stem for maximum safety

SEALING

- Pure PTFE self-lubricating seats with flexible-lip design

THREADS

- ISO 228 parallel female by female threads

HANDLE

- Reinforced nylon black wedge handle
- **WARNING:** do not exceed reasonable temperature and/or electrical load
- Handle removable with valve in service

WORKING PRESSURE & TEMPERATURE

- 60 bar (900 PSI) non-shock cold working pressure
- -20°C to +90°C (-4°F to +200°F)
- +120°C (+250°F) metal wedge handle (mini configuration only)
- **WARNING:** freezing of the fluid in the installation may severely damage the valve

UPON REQUEST

- ISO 7/1 BSPT taper threads
- Other brass alloys or aluminum
- Additional connection options

PED DIRECTIVE

- The product meets the requirements of PED Directive 2014/68/UE and according to art.4 par.3, it does not require CE marking

APPROVED BY OR IN COMPLIANCE WITH

- RoHS Compliant (EU)

NOTE: approvals apply to specific configurations/sizes only.

OPTIONS

- Male by female threads
- Nylon wedge handle yellow, red or blue



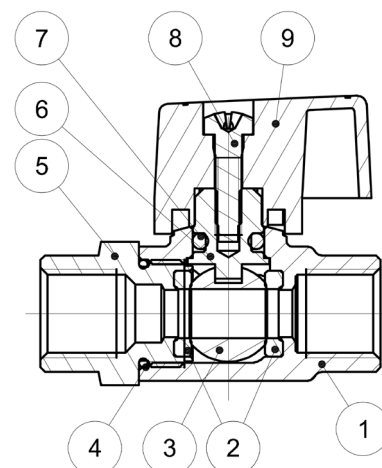
s.39 XCES39 - 5466

Each user should perform his own tests to find out the suitability for his particular application. BONOMI INDUSTRIES makes no warranty, express or implied, as to the shape, fit or function of a product for any application. Contact us or consult with your supplier for additional information on the suitability of the BONOMI INDUSTRIES products with your specific field of use.

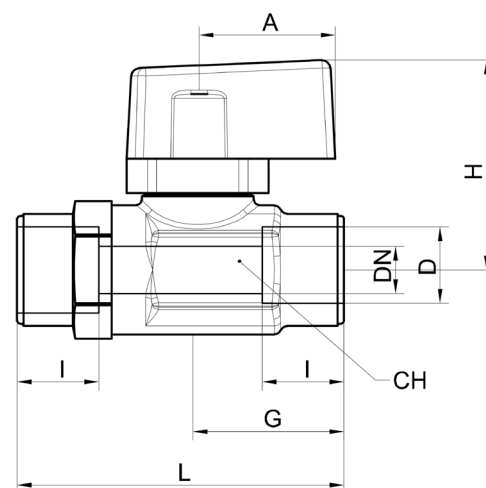


PNEUMATIC

	Part description	Q.ty	Material
1	Nickel plated body (external nickel plated, unplated inside)	1	CW617N
2	Ball seat	2	PTFE
3	Chrome plated ball	1	CW617N
4	O-Ring	1	HNBR
5	Nickel plated end cap (external nickel plated, unplated inside)	1	CW617N
6	Unplated stem	1	CW617N
7	O-Ring	1	FPM
8	Zinc plated screw	1	C10C (EN10263-2)
9	Black handle	1	Nylon glass filled 30%

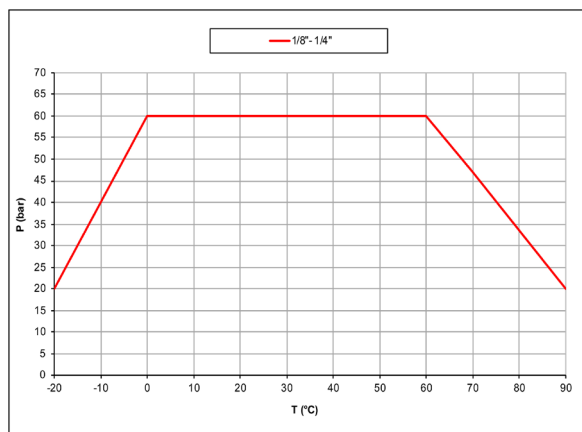


Code	S39AF0M	S39BF0M
D (inch)	1/8"	1/4"
DN (mm)	5.3	5.3
I (mm)	9.5	11
L (mm)	38	43
G (mm)	17	20
A (mm)	16	16
H (mm)	24.4	24.7
CH (mm)	15	15
Kv (m³/h)	1.2	1.2

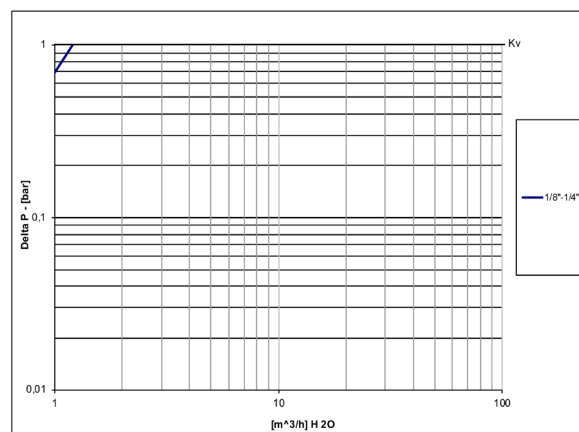


DN shows the nominal flow diameter.

PRESSURE-TEMPERATURE CHART



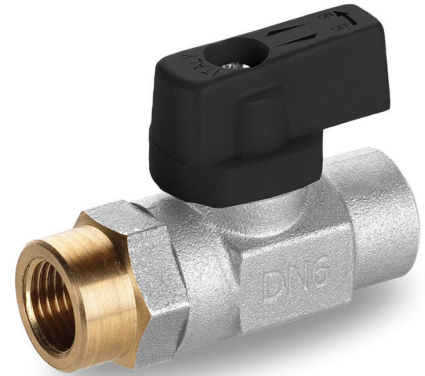
PRESSURE DROP CHART





s.39 NPT forged, micro

**Female/Female
1/8" - 1/4"
high pressure ball valve**



QUALITY

- Dual sealing system allows valve to be operated in either direction making installation easier
- No metal-to-metal moving parts
- No maintenance ever required
- Silicone-free lubricant on all seals
- Chrome plated brass ball for longer life
- Each valve is seal tested for maximum safety
- Handle stops on body to avoid stresses at stem
- Handle / stem clearly shows ball position

BODY

- Hot forged sand blasted brass body
- Finest brass according to EN 12165 specification

STEM

- Blowout-proof brass stem
- Maintenance-free, double FPM O-ring at the stem for maximum safety

SEALING

- Pure PTFE self-lubricating seats with flexible-lip design

THREADS

- NPT taper ANSI B.1.20.1 threads | ISO 228 parallel female by female threads

HANDLE

- Reinforced nylon black wedge handle
- **WARNING:** do not exceed reasonable temperature and/or electrical load
- Handle removable with valve in service

WORKING PRESSURE & TEMPERATURE

- 900 PSI (60 bar) non-shock cold working pressure
- -4°F to +200°F (-20°C to +90°C)
- +250°F (+120°C) metal wedge handle (mini configuration only)
- **WARNING:** freezing of the fluid in the installation may severely damage the valve

UPON REQUEST

- ISO 7/1 BSPT taper threads
- Other brass alloys or aluminum
- Additional connection options

PED DIRECTIVE

- The product meets the requirements of PED Directive 2014/68/UE and according to art.4 par.3, it does not require CE marking

APPROVED BY OR IN COMPLIANCE WITH

- RoHS Compliant (EU)

NOTE: approvals apply to specific configurations/sizes only.

OPTIONS

- Male by female threads
- Nylon wedge handle yellow, red or blue



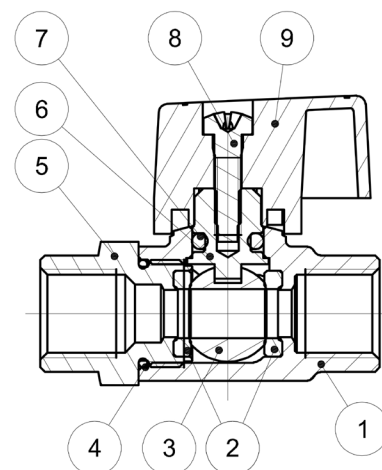
s.39 NPT XCES39N - 5466

Each user should perform his own tests to find out the suitability for his particular application. BONOMI INDUSTRIES makes no warranty, express or implied, as to the shape, fit or function of a product for any application. Contact us or consult with your supplier for additional information on the suitability of the BONOMI INDUSTRIES products with your specific field of use.

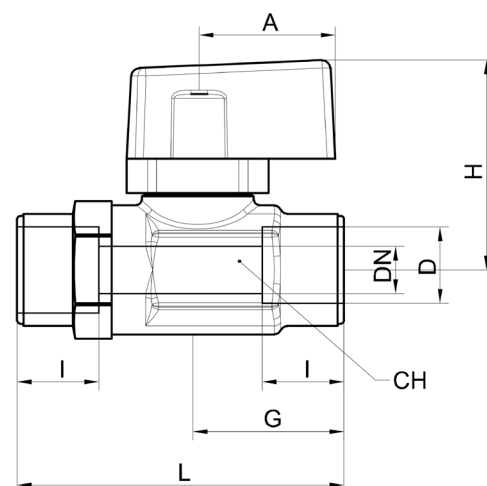


PNEUMATIC

	Part description	Q.ty	Material
1	Nickel plated body (external nickel plated, unplated inside)	1	CW617N
2	Ball seat	2	PTFE
3	Chrome plated ball	1	CW617N
4	O-Ring	1	HNBR
5	Nickel plated end cap (external nickel plated, unplated inside)	1	CW617N
6	Unplated stem	1	CW617N
7	O-Ring	1	FPM
8	Zinc plated screw	1	C10C (EN10263-2)
9	Black handle	1	Nylon glass filled 30%

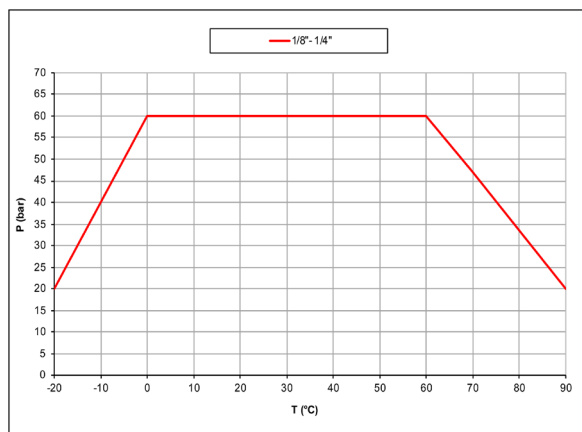


Code	S39AX0M	S39BX0M
D (inch)	1/8"	1/4"
DN (inch)	0.209	0.209
I (inch)	0.374	0.472
L (inch)	1.496	1.732
G (inch)	0.669	0.787
A (inch)	0.630	0.630
H (inch)	0.965	0.965
CH (inch)	0.591	0.591
Cv (GPM)	1.4	1.4

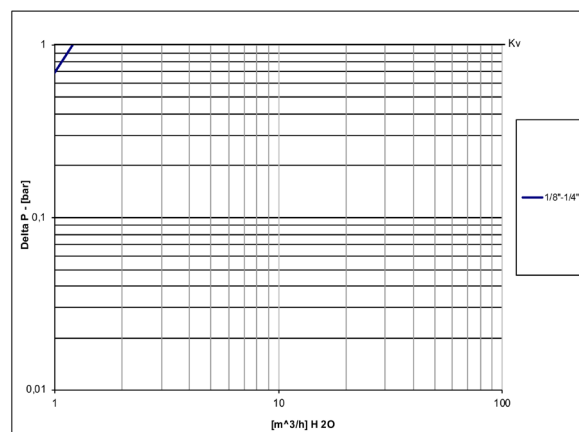


DN shows the nominal flow diameter.

PRESSURE-TEMPERATURE CHART



PRESSURE DROP CHART

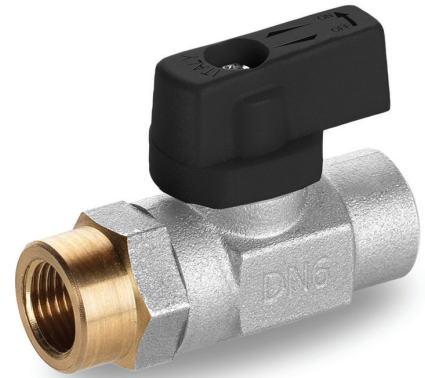




s.39 BSPT forged, micro

Female/Female
1/8" - 1/4"

ISO 7/1, BS21, high pressure ball valve



QUALITY

- Dual sealing system allows valve to be operated in either direction making installation easier
- No metal-to-metal moving parts
- No maintenance ever required
- Silicone-free lubricant on all seals
- Chrome plated brass ball for longer life
- Each valve is seal tested for maximum safety
- Handle stops on body to avoid stresses at stem
- Handle / stem clearly shows ball position

BODY

- Hot forged sand blasted brass body
- Finest brass according to EN 12165 specification

STEM

- Blowout-proof brass stem
- Maintenance-free, double FPM O-ring at the stem for maximum safety

SEALING

- Pure PTFE self-lubricating seats with flexible-lip design

THREADS

- ISO 7/1 BSPT taper threads

HANDLE

- Reinforced nylon black wedge handle
- **WARNING:** do not exceed reasonable temperature and/or electrical load
- Handle removable with valve in service

WORKING PRESSURE & TEMPERATURE

- 60 bar (900 PSI) non-shock cold working pressure
- -20°C to +90°C (-4°F to +200°F)
- +120°C (+250°F) metal wedge handle (mini configuration only)
- **WARNING:** freezing of the fluid in the installation may severely damage the valve

UPON REQUEST

- Other brass alloys or aluminum
- Additional connection options

PED DIRECTIVE

- The product meets the requirements of PED Directive 2014/68/UE and according to art.4 par.3, it does not require CE marking

APPROVED BY OR IN COMPLIANCE WITH

- RoHS Compliant (EU)

NOTE: approvals apply to specific configurations/sizes only.

OPTIONS

- Male by female threads
- Nylon wedge handle yellow, red or blue



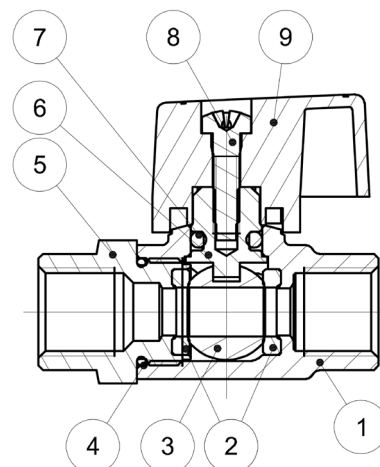
s.39 BSPT XCES39B - 5466

Each user should perform his own tests to find out the suitability for his particular application. BONOMI INDUSTRIES makes no warranty, express or implied, as to the shape, fit or function of a product for any application. Contact us or consult with your supplier for additional information on the suitability of the BONOMI INDUSTRIES products with your specific field of use.

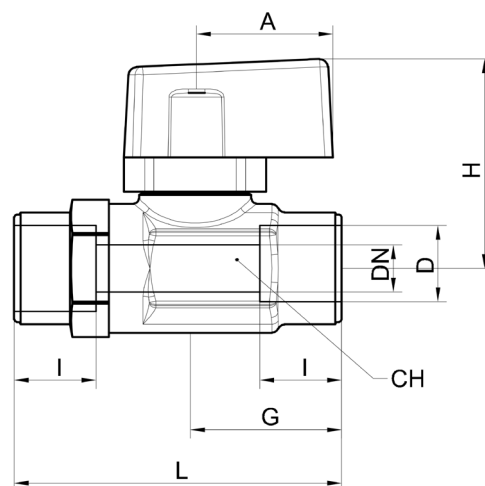


PNEUMATIC

	Part description	Q.ty	Material
1	Nickel plated body (external nickel plated, unplated inside)	1	CW617N
2	Ball seat	2	PTFE
3	Chrome plated ball	1	CW617N
4	O-Ring	1	HNBR
5	Nickel plated end cap (external nickel plated, unplated inside)	1	CW617N
6	Unplated stem	1	CW617N
7	O-Ring	1	FPM
8	Zinc plated screw	1	C10C (EN10263-2)
9	Black handle	1	Nylon glass filled 30%

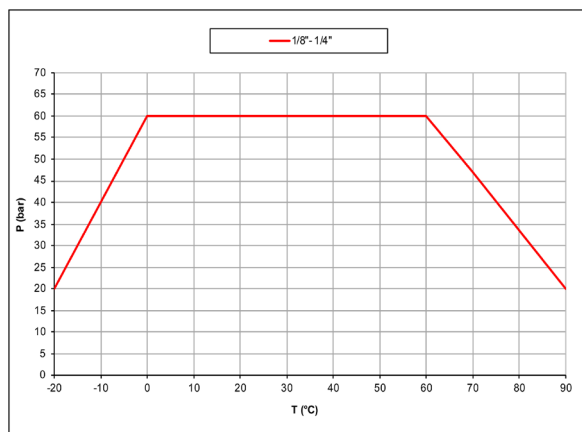


Code	S39AW0M	S39BW0M
D (inch)	1/8"	1/4"
DN (mm)	5.3	5.3
I (mm)	9.5	12
L (mm)	38	44
G (mm)	17	20
A (mm)	16	16
H (mm)	24.4	24.4
CH (mm)	15	15
Kv (m³/h)	1.2	1.2

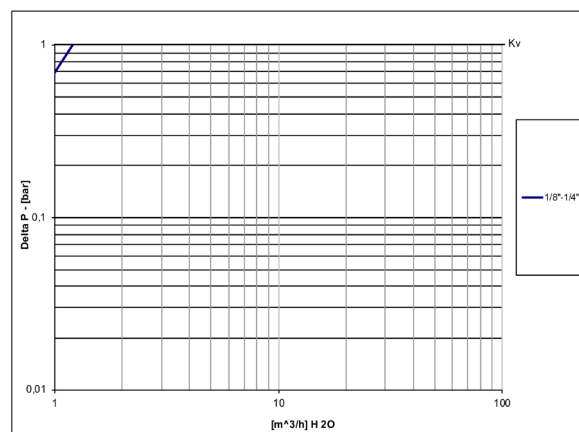


DN shows the nominal flow diameter.

PRESSURE-TEMPERATURE CHART



PRESSURE DROP CHART





s.93 downstream exhaust

**Female/Female
1/4" - 2"**

EN 10226-1, with patented locking handle

Featuring patented tamper-proof lockable handle that has no equal in the market.

RuB s.93 range exhausts automatically and continuously downstream air pressure as soon as turned in the closed position.

Valve is lockable in the closed position only, according to Part. 1910.147 safety OSHA (USA) requirements allowing safe maintenance of the air-supplied equipment; when valve is open, one simple 90° turn of the handle shuts flow immediately.

We care for those you care for.



QUALITY

- No metal-to-metal moving parts
- No maintenance ever required
- Handle clearly shows ball position
- Silicone-free lubricant on all seals
- Chrome plated brass ball for longer life
- Handle stops on body to avoid stresses at stem

BODY

- Hot forged sand blasted, external nickel plated brass body and cap sealed with Loctite® or equivalent threads sealant
- The valve body includes a tapped downstream depressurization venting outlet to direct exhaust air or assemble mufflers for noise control
- Finest brass according to EN 12165 and EN 12164 specifications

STEM

- Blowout-proof nickel plated brass stem
- Maintenance-free, double FPM O-rings at the stem for maximum safety

SEALING

- Molybdenum filled PTFE self-lubricating seats with flexible-lip design

THREADS

- EN 10226-1, ISO 228 parallel female by female threads

FLOW

- Full port to DIN 3357 for maximum flow

HANDLE

- Geomet® carbon steel lockable handle patent n. 7074-B/90 with thick PVC dip coating. Handle coating offers both thermal and electrical protection
- Handle removable with valve in service

OPTIONS

- Stainless steel handle (1.4016 / AISI 430)
- Non-locking Geomet® carbon steel lever handle
- Safety pin
- Muffler, hose



WORKING PRESSURE & TEMPERATURE

- 14 bar (200 PSI) non-shock cold working pressure
- -10°C to +100°C (+15°F to +210°F)
- **WARNING:** freezing of the fluid in the installation may severely damage the valve

UPON REQUEST

- Stainless steel ball (1.4401 / AISI 316)
- Custom design
- T-handle

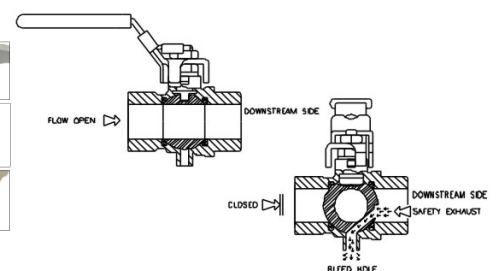
PED DIRECTIVE

- The product described in this document meets the requirements of PED Directive 2014/68/UE and according to art.4 par.3, it does not require CE marking; it cannot be used with dangerous gases in sizes larger than 25 mm

APPROVED BY OR IN COMPLIANCE WITH

- GOST-R (Russia)
- EAC – Declaration of conformity (Russia, Kazakhstan, Belarus)
- RoHS Compliant (EU)
- OSHA Compliant (United States)

NOTE: approvals apply to specific configurations/sizes only.



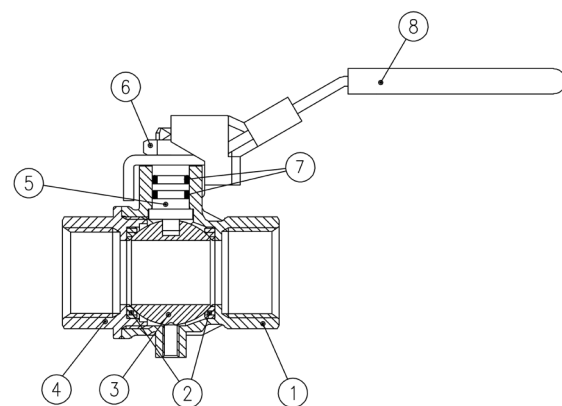
s.93 XCES93 - 5466

Each user should perform his own tests to find out the suitability for his particular application. BONOMI INDUSTRIES makes no warranty, express or implied, as to the shape, fit or function of a product for any application. Contact us or consult with your supplier for additional information on the suitability of the BONOMI INDUSTRIES products with your specific field of use.

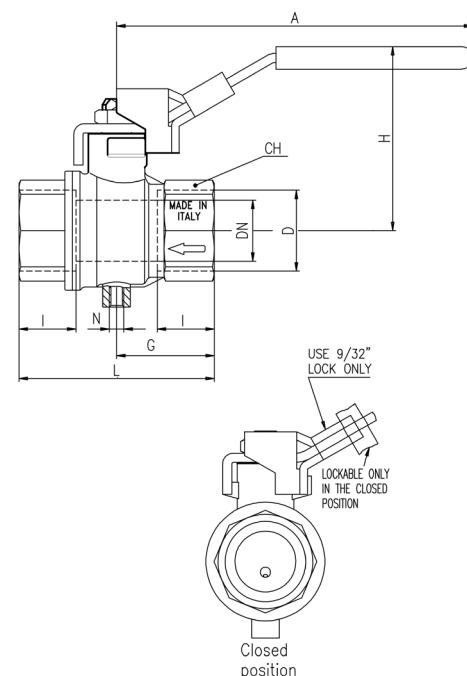


PNEUMATIC

	Part description	Q.ty	Material
1	Nickel plated body (external treatment)	1	CW617N
2	Seat	2	PTFE molybdenum filled
3	Chrome plated ball	1	CW617N
4	Nickel plated end-cap (external treatment)	1	CW617N
5	Nickel plated stem O-Ring design	1	CW617N
6	Geomet® nut	1	C4C (EN10263-2)
7	O-Ring	2	FPM
8	Light blue PVC coated Geomet® steel lockable handle	1	DD11 (EN10111)

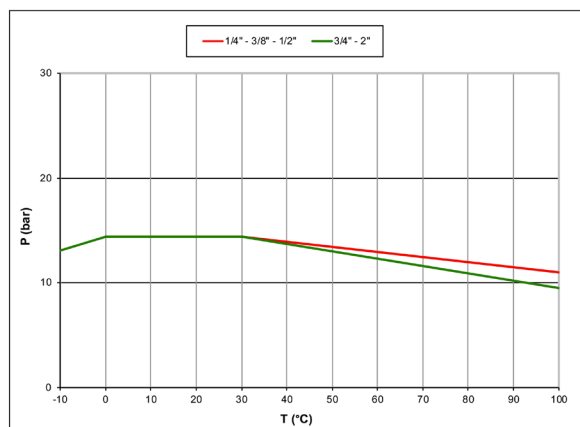


Code	S93B00	S93C00	S93D00	S93E00	S93F00	S93G00	S93H00	S93I00
D (inch)	1/4"	3/8"	1/2"	3/4"	1"	1 1/4"	1 1/2"	2"
DN (mm)	8	10	15	20	25	32	40	50
I (mm)	12	12	15.5	17	21	23	23	26.5
L (mm)	45	45	59	64	81	93	102	121
G (mm)	22.5	22.5	29.5	32	40.5	46.5	51	60.5
A (mm)	96	96	96	117	117	156.5	156.5	156.5
H (mm)	46	46	51	59	63	77	83	90
CH (mm)	17	20	25	31	40	49	54	68.5
N	M5					G 1/4"		
Kv (m3/h)	3.9	8.2	28	42	70	110	186	256

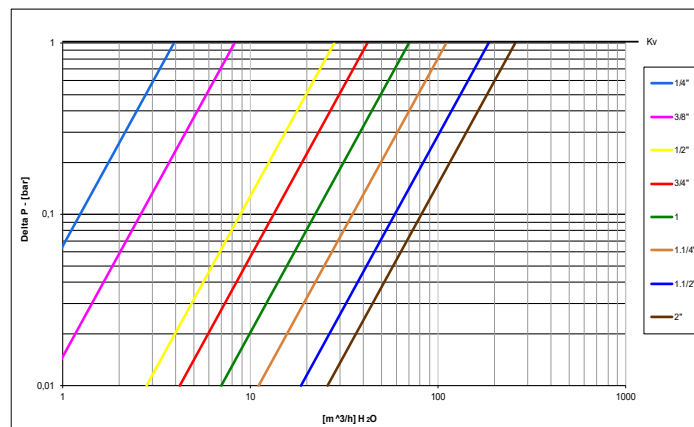


DN shows the nominal flow diameter. Actual flow diameter complies with full port DIN 3357 part 4.

PRESSURE-TEMPERATURE CHART



PRESSURE DROP CHART





s.93 NPT downstream exhaust

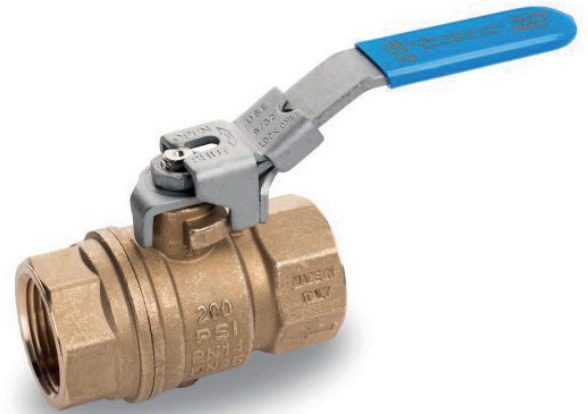
**Female/Female
1/4" - 2"
with patented locking handle**

Featuring patented tamper-proof lockable handle that has no equal in the market.

RuB s.93 range exhausts automatically and continuously downstream air pressure as soon as turned in the closed position.

Valve is lockable in the closed position only, according to Part. 1910.147 safety OSHA (USA) requirements allowing safe maintenance of the air-supplied equipment; when valve is open, one simple 90° turn of the handle shuts flow immediately.

We care for those you care for.



QUALITY

- No metal-to-metal moving parts
- No maintenance ever required
- Handle clearly shows ball position
- Silicone-free lubricant on all seals
- Chrome plated brass ball for longer life
- Handle stops on body to avoid stresses at stem

BODY

- Hot forged sand blasted, external nickel plated brass body and cap sealed with Loctite® or equivalent threads sealant
- The valve body includes a tapped downstream depressurization venting outlet to direct exhaust air or assemble mufflers for noise control
- Finest brass according to EN 12165 and EN 12164 specifications

STEM

- Blowout-proof nickel plated brass stem
- Maintenance-free, double FPM O-rings at the stem for maximum safety

SEALING

- Molybdenum filled PTFE self-lubricating seats with flexible-lip design

THREADS

- NPT taper ANSI B.1.20.1 threads

FLOW

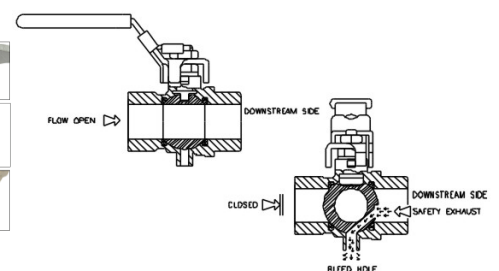
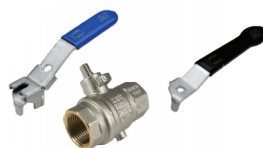
- Full port to DIN 3357 for maximum flow

HANDLE

- Geomet® carbon steel lockable handle patent n. 7074-B/90 with thick PVC dip coating. Handle coating offers both thermal and electrical protection
- Handle removable with valve in service

OPTIONS

- Stainless steel handle (1.4016 / AISI 430)
- Non-locking Geomet® carbon steel lever handle
- Safety pin
- Muffler, hose



WORKING PRESSURE & TEMPERATURE

- 200 PSI (14 bar) non-shock cold working pressure
- +15°F to +210°F (-10°C to +100°C)
- **WARNING:** freezing of the fluid in the installation may severely damage the valve

UPON REQUEST

- Stainless steel ball (1.4401 / AISI 316)
- Custom design
- T-handle

PED DIRECTIVE

- The product described in this document meets the requirements of PED Directive 2014/68/UE and according to art.4 par.3, it does not require CE marking; it cannot be used with dangerous gases in sizes larger than 25 mm

APPROVED BY OR IN COMPLIANCE WITH

- GOST-R (Russia)
- RoHS Compliant (EU)
- OSHA Compliant (United States)

NOTE: approvals apply to specific configurations/sizes only.

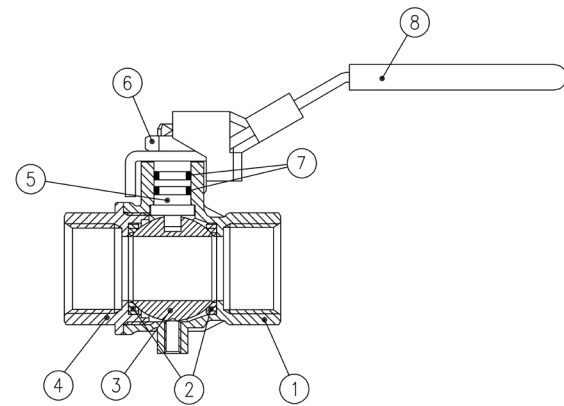
s.93 NPT XCES93N - 5466

Each user should perform his own tests to find out the suitability for his particular application. BONOMI INDUSTRIES makes no warranty, express or implied, as to the shape, fit or function of a product for any application. Contact us or consult with your supplier for additional information on the suitability of the BONOMI INDUSTRIES products with your specific field of use.

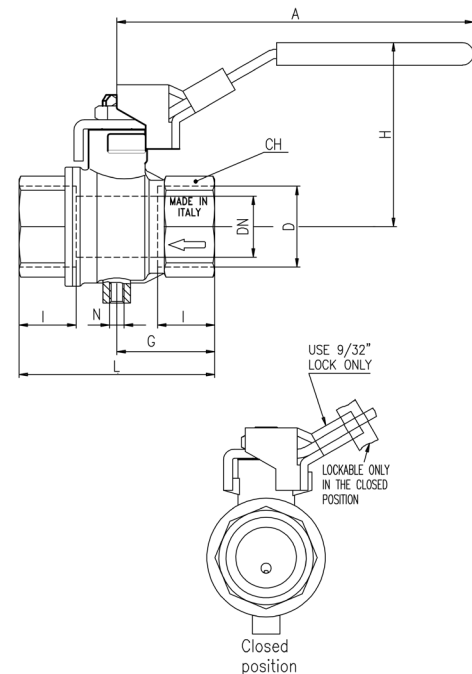


PNEUMATIC

	Part description	Q.ty	Material
1	Unplated body	1	CW617N
2	Seat	2	PTFE molybdenum filled
3	Chrome plated ball	1	CW617N
4	Unplated end-cap	1	CW617N
5	Nickel plated stem O-Ring design	1	CW617N
6	Geomet® nut	1	C4C (EN10263-2)
7	O-Ring	2	FPM
8	Light blue PVC coated Geomet® steel lockable handle	1	DD11 (EN10111)

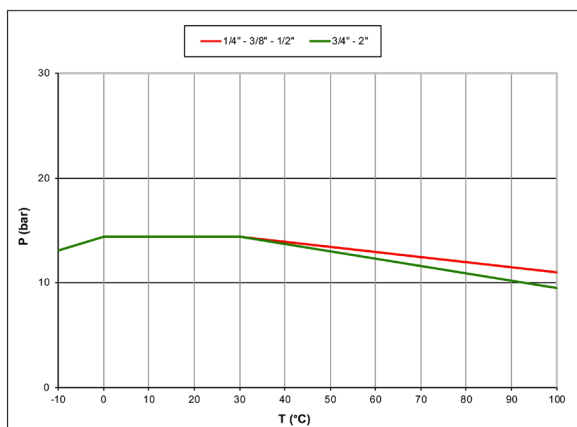


Code	S93B41	S93C41	S93D41	S93E41	S93F41	S93G41	S93H41	S93I41
D (inch)	1/4"	3/8"	1/2"	3/4"	1"	1 1/4"	1 1/2"	2"
DN (inch)	0.315	0.374	0.591	0.787	0.945	1.181	1.496	1.890
I (inch)	0.472	0.472	0.610	0.669	0.827	0.906	0.906	1.043
L (inch)	1.772	1.772	2.323	2.520	3.189	3.661	4.016	4.764
G (inch)	0.886	0.886	1.161	1.259	1.594	1.831	2.008	2.382
A (inch)	3.779	3.779	3.759	4.606	4.606	6.161	6.161	6.161
H (inch)	1.823	1.823	1.998	2.333	2.490	3.018	3.254	3.530
CH (inch)	0.669	0.787	0.984	1.220	1.575	1.929	2.126	2.697
N	10-32 UNF					1/4" NPT		
CV (GPM)	4.5	9.5	32.3	48.5	80.9	127.1	214.9	295.8

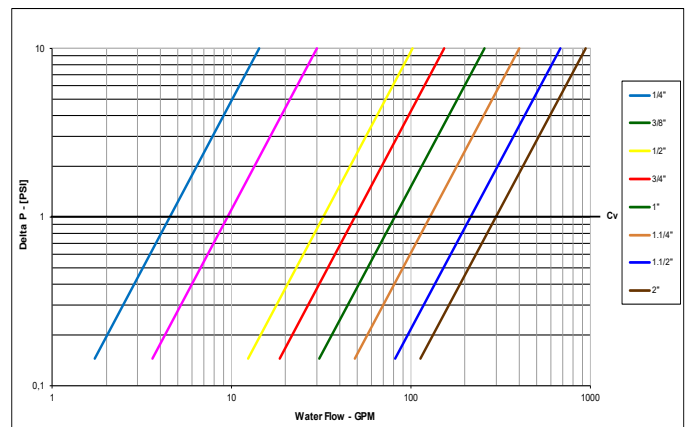


DN shows the nominal flow diameter. Actual flow diameter complies with full port DIN 3357 part 4.

PRESSURE-TEMPERATURE CHART



PRESSURE DROP CHART





s.93 BSPT downstream exhaust

Female/Female
1/2" - 2"
ISO 7/1, BS21, with patented locking handle

Featuring patented tamper-proof lockable handle that has no equal in the market.

RuB s.93 range exhausts automatically and continuously downstream air pressure as soon as turned in the closed position.

Valve is lockable in the closed position only, according to Part. 1910.147 safety OSHA (USA) requirements allowing safe maintenance of the air-supplied equipment; when valve is open, one simple 90° turn of the handle shuts flow immediately.

We care for those you care for.



QUALITY

- No metal-to-metal moving parts
- No maintenance ever required
- Handle clearly shows ball position
- Silicone-free lubricant on all seals
- Chrome plated brass ball for longer life
- Handle stops on body to avoid stresses at stem

BODY

- Hot forged sand blasted, external nickel plated brass body and cap sealed with Loctite® or equivalent threads sealant
- The valve body includes a tapped downstream depressurization venting outlet to direct exhaust air or assemble mufflers for noise control
- Finest brass according to EN 12165 and EN 12164 specifications

STEM

- Blowout-proof nickel plated brass stem
- Maintenance-free, double FPM O-rings at the stem for maximum safety

SEALING

- Molybdenum filled PTFE self-lubricating seats with flexible-lip design

THREADS

- ISO 7/1 BSPT taper threads

FLOW

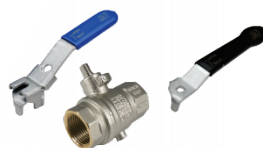
- Full port to DIN 3357 for maximum flow

HANDLE

- Geomet® carbon steel lockable handle patent n. 7074-B/90 with thick PVC dip coating. Handle coating offers both thermal and electrical protection
- Handle removable with valve in service

OPTIONS

- Stainless steel handle (1.4016 / AISI 430)
- Non-locking Geomet® carbon steel lever handle
- Safety pin
- Muffler, hose



WORKING PRESSURE & TEMPERATURE

- 14 bar (200 PSI) non-shock cold working pressure
- -10°C to +100°C (+15°F to +210°F)
- **WARNING:** freezing of the fluid in the installation may severely damage the valve

UPON REQUEST

- Stainless steel ball (1.4401 / AISI 316)
- Custom design
- T-handle

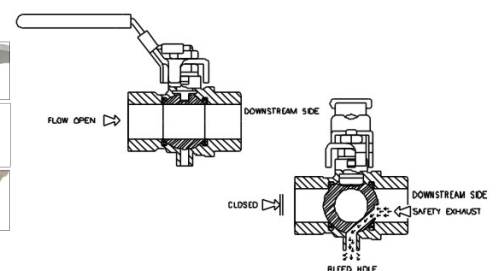
PED DIRECTIVE

- The product described in this document meets the requirements of PED Directive 2014/68/UE and according to art.4 par.3, it does not require CE marking; it cannot be used with dangerous gases in sizes larger than 25 mm

APPROVED BY OR IN COMPLIANCE WITH

- RoHS Compliant (EU)
- OSHA Compliant (United States)

NOTE: approvals apply to specific configurations/sizes only.



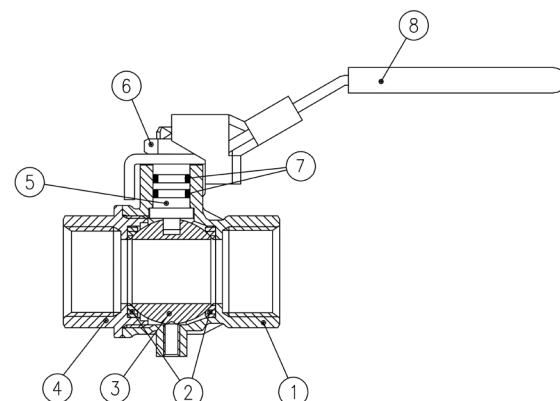
s.93 BSPT XGES93B - 5466

Each user should perform his own tests to find out the suitability for his particular application. BONOMI INDUSTRIES makes no warranty, express or implied, as to the shape, fit or function of a product for any application. Contact us or consult with your supplier for additional information on the suitability of the BONOMI INDUSTRIES products with your specific field of use.

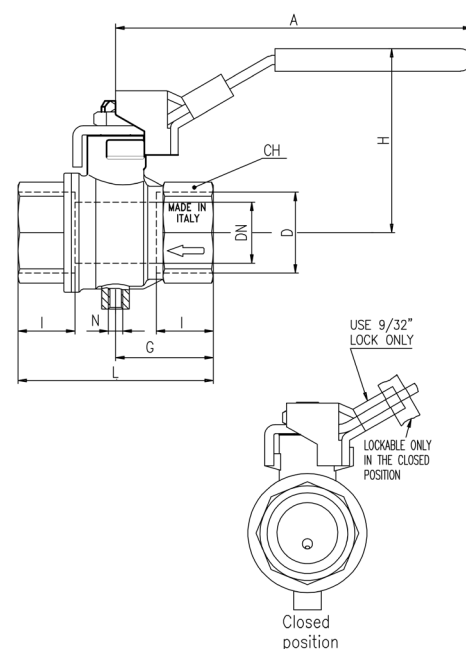


PNEUMATIC

	Part description	Q.ty	Material
1	Nickel plated body (external treatment)	1	CW617N
2	Seat	2	PTFE molybdenum filled
3	Chrome plated ball	1	CW617N
4	Nickel plated end-cap (external treatment)	1	CW617N
5	Nickel plated stem O-Ring design	1	CW617N
6	Geomet® nut	1	C4C (EN10263-2)
7	O-Ring	2	FPM
8	Light blue PVC coated Geomet® steel lockable handle	1	DD11 (EN10111)

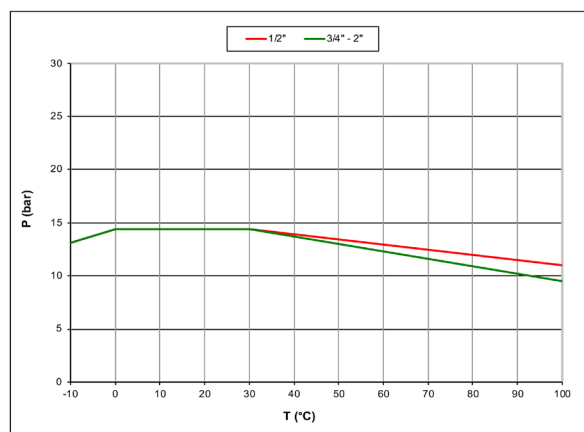


Code	S93D50	S93E50	S93F50	S93G50	S93H50	S93I50
D (inch)	1/2"	3/4"	1"	1 1/4"	1 1/2"	2"
DN (mm)	15	20	25	32	40	50
I (mm)	15.5	17	21	23	23	26.5
L (mm)	59	64	81	93	102	121
G (mm)	29.5	32	40.5	46.5	51	60.5
A (mm)	96	117	117	156.5	156.5	156.5
H (mm)	51	59	63	77	83	90
CH (mm)	25	31	40	49	54	68.5
N	M5			G 1/4"		
Kv (m3/h)	28	42	70	110	186	256

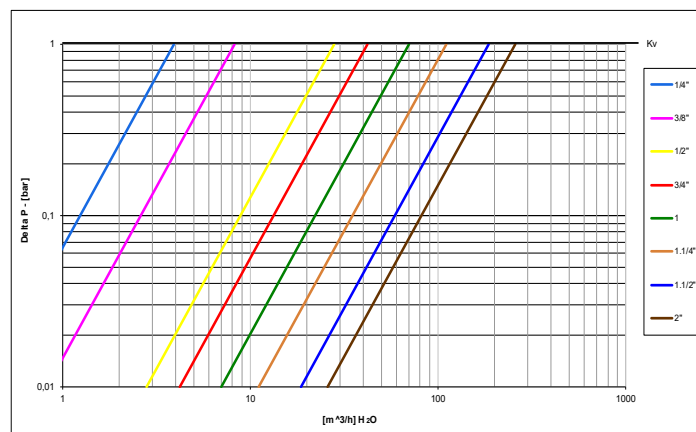


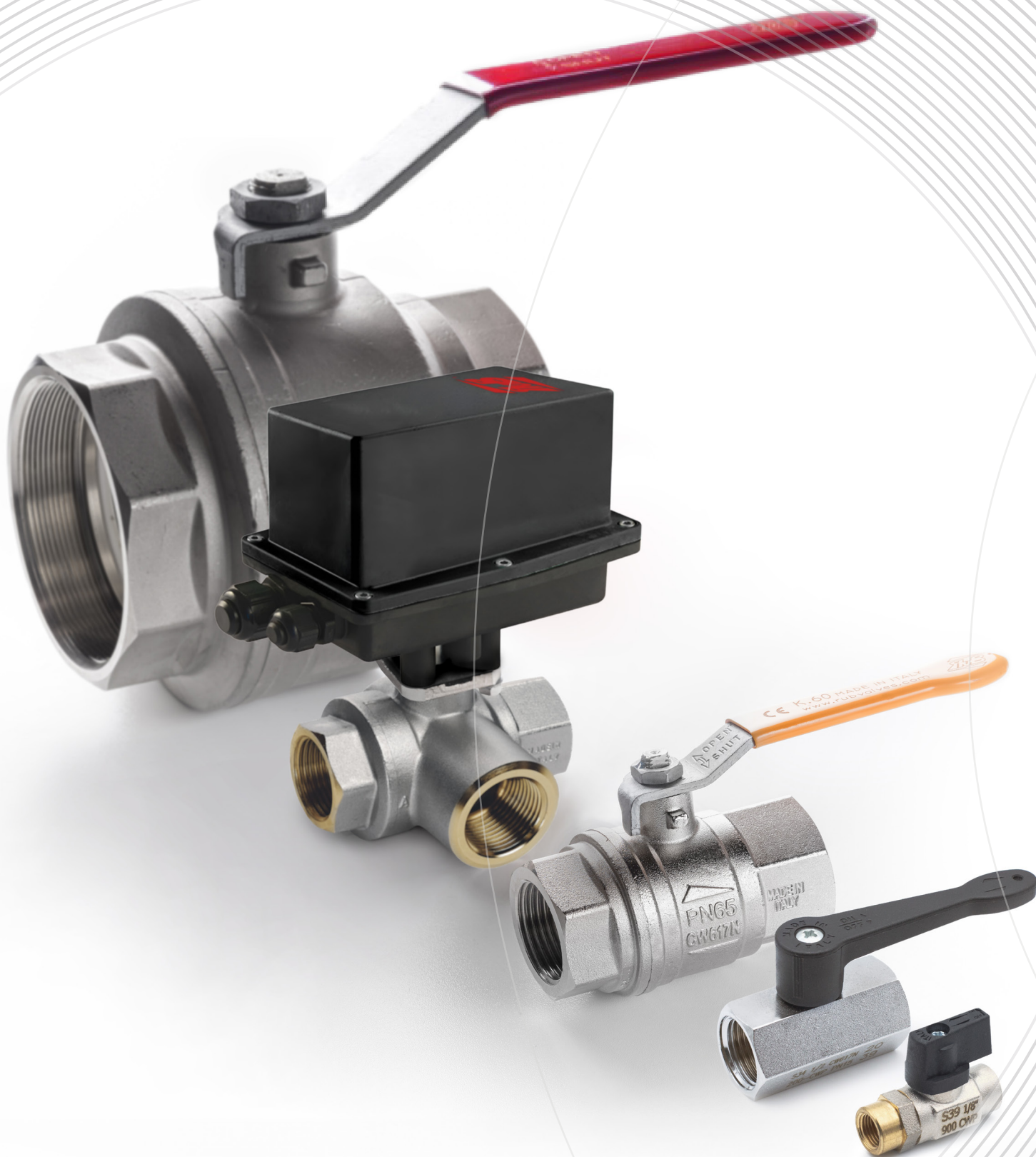
DN shows the nominal flow diameter. Actual flow diameter complies with full port DIN 3357 part 4.

PRESSURE-TEMPERATURE CHART



PRESSURE DROP CHART





Application Catalog



ACTUATION



INDUSTRY



PNEUMATIC



GAS



FIREFIGHTING



DRINKING WATER



PLUMBING



ACCESSORIES



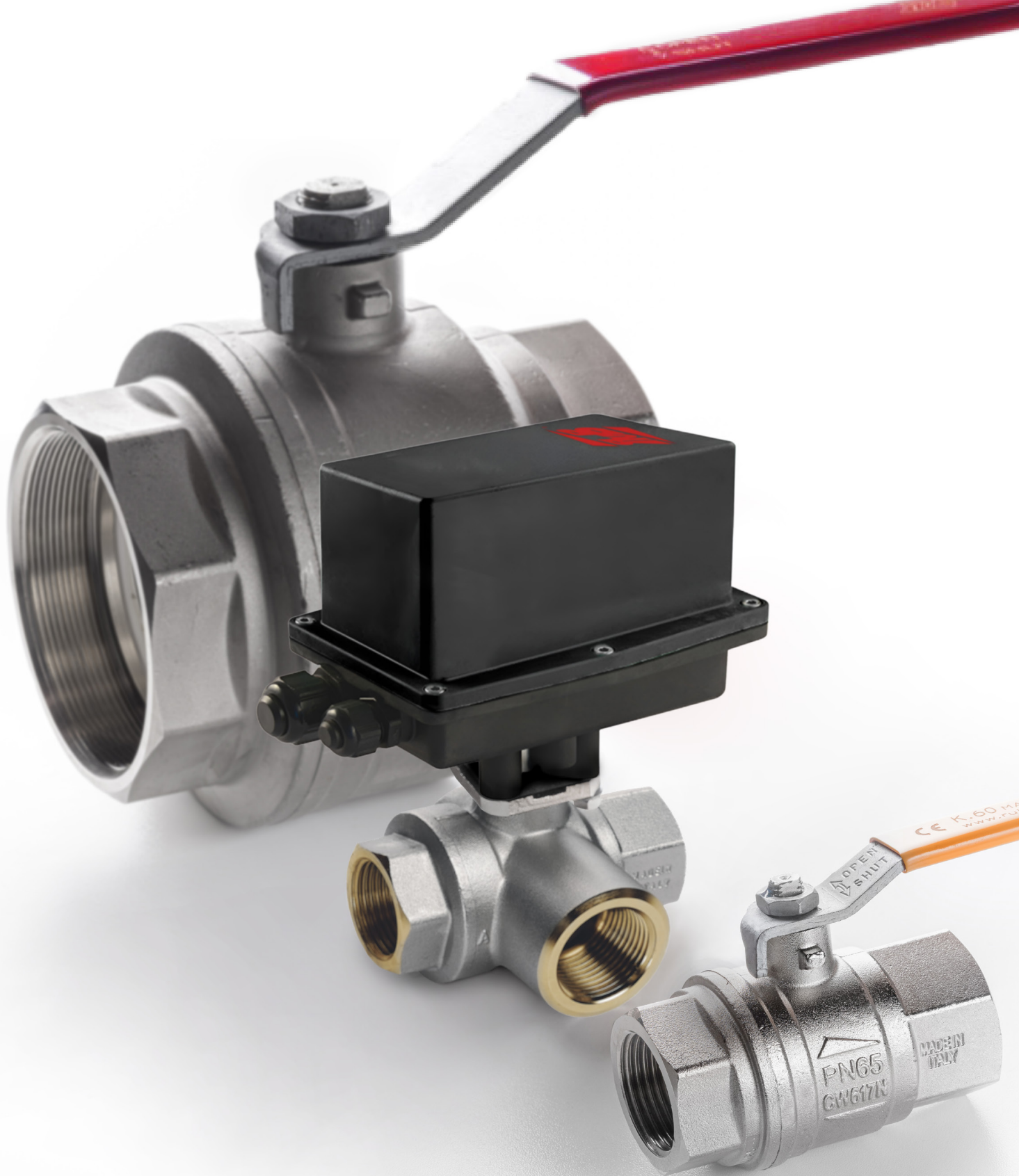
Ask for additional information on the whole range of **RuB** products and consult with your supplier for special applications.



ALL RIGHTS RESERVED | COPYRIGHT© BONOMI INDUSTRIES 2025

BONOMI INDUSTRIES endeavors to provide comprehensive information about the installation, maintenance and operation of its products. For more details or clarification, please contact us. **BONOMI INDUSTRIES** reserves the right to change or modify product design, construction, specifications, materials or the information herein without prior notice and without incurring any obligation to make such changes and modifications on products previously or subsequently sold. Content of this document is proprietary to **BONOMI INDUSTRIES** and it may not be copied in part or in whole without prior written authorization. Recommendations on application design and material selection are based on available technical data and are offered as suggestions only. Each user should make his/her own tests to determine the suitability for his/her own particular use. **BONOMI INDUSTRIES** gives no express or implied warranties concerning the form, fit, or function of a product in any application. **BONOMI INDUSTRIES** does not accept liability for errors or omissions. Any undated reference to a code or standard shall be interpreted as referring to the latest edition.

BONOMI INDUSTRIES, **RuB** and triangles, are all registered trademarks of **BONOMI INDUSTRIES**. Other logos or trademarks are property of respective owners.





BONOMI

INDUSTRIES SRL



Via Padana Superiore, 29, 25080 Mazzano (BS), Italy
Tel.: +39 030 212441 - sales@rubvalves.com
www.bonomiindustries.com