

PALETTE

COLORI & TESSUTI

ISOLSPACE COLLECTIONS



DECORATIVE SOLUTIONS FOR ACOUSTIC WELLBEING

isol**space**

PALETTE FABRIC

Flora, Silhouette, Trame, Alma, Marea, Oblique e Smooth Collections*



BURRO
COD 14516



SABBIA
COD 14532



OCRA
COD 14512



PESCA
COD 14188



TERRACOTTA
COD 14589



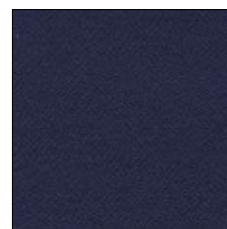
VERDE MENTA
COD 14457



PETROLIO
COD 14411



CELESTE
COD 14369



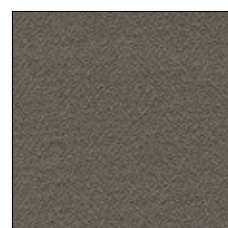
BLU NAVY
COD 14333



GRIGIO GHIACCIO
COD 14629



ANTRACITE
COD 14607



PIOMBO
COD 14625

La palette Fabric combina con equilibrio tinte delicate e colori decisi, creando combinazioni cromatiche di forte impatto. Realizzato al 100% in PL Trevira® CS ECO, il tessuto utilizza filato derivato da PET riciclato post-consumo. Certificato GRS e OEKO-TEX®, garantisce ignifugità, resistenza all'usura, riciclabilità totale e una piacevolezza tattile superiore.

The Fabric palette strikes a balance between delicate hues and bold colours, creating striking colour combinations. Made from 100% Trevira® CS ECO PL, the fabric is made from yarn derived from post-consumer recycled PET. It is GRS and OEKO-TEX® certified and guarantees flame retardancy, wear resistance, total recyclability and superior tactile pleasantness.



tessuto riciclato
recycled fabric



tessuto riciclabile
recyclable fabric



acustico
acoustic



colori speciali
special colours



***Questa palette colori è applicabile alle seguenti collezioni:**

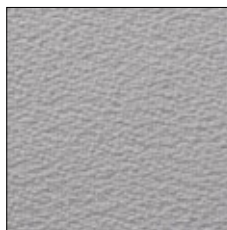
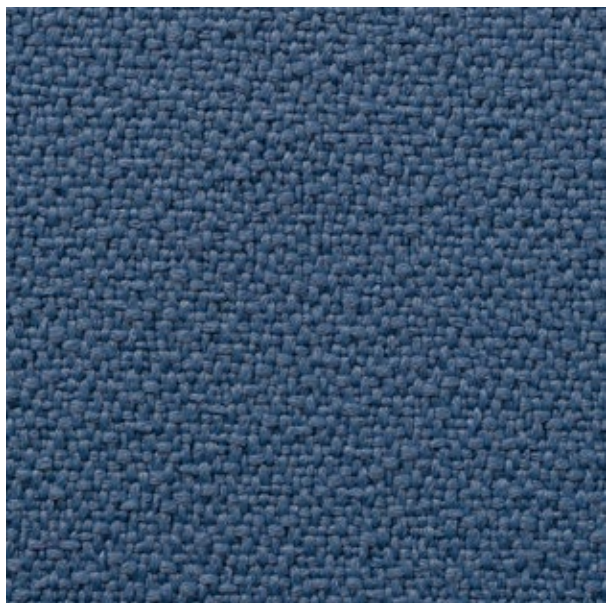
Flora, Silhouette, Trame, Alma, Marea, Oblique e Smooth.

This colour palette is available for the following collections:

Flora, Silhouette, Trame, Alma, Marea, Oblique and Smooth.

PALETTE NATURE S

Flora, Silhouette, Trame, Alma, Marea, Oblique e Smooth Collections*



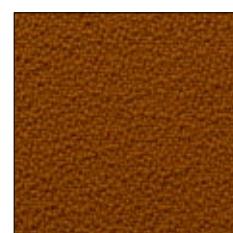
ALPACA
COD 999



DOLPHIN
COD 377

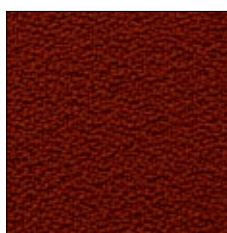


CARIBOU
COD 533



GIRAFFE
COD 119

La palette cromatica Nature S prende ispirazione dal mondo naturale. Il tessuto è 100% PL Trevira® CS ECO e si caratterizza per la sua forte sostenibilità in quanto realizzato con PET riciclato da bottiglie post-consumer. È certificato GRS (Global Recycled Standard) e OEKO-TEX®, ignifugo e riciclabile al 100%. Piacevole al tatto, si pulisce facilmente ed è resistente all'usura.

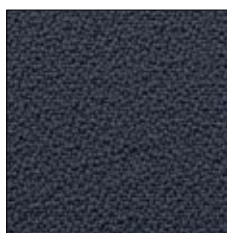


FOX
COD 572

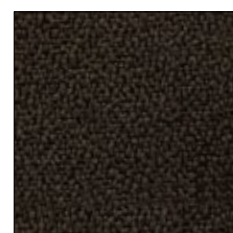


IGUANA
COD 426

The Nature S colour palette draws inspiration from the natural world. The 100% PL Trevira® CS ECO fabric is characterised by its strong sustainability, as it is made from recycled PET derived from post-consumer bottles. The fabric is GRS (Global Recycled Standard) and OEKO-TEX® certified, flame retardant and 100% recyclable. It is pleasant to the touch, easy to clean and wear-resistant.



WHALE
COD 636



PANTHER
COD 573



tessuto riciclato
recycled fabric



tessuto riciclabile
recyclable fabric



acustico
acoustic



colori speciali
special colours



***Questa palette colori è applicabile alle seguenti collezioni:**

Flora, Silhouette, Trame, Alma, Marea, Oblique e Smooth.

This colour palette is available for the following collections:

Flora, Silhouette, Trame, Alma, Marea, Oblique and Smooth.

PALETTE MELANGE

Flora, Silhouette, Trame, Alma, Marea, Oblique e Smooth Collections*



La palette Melange è composta da tessuti creati dall'intreccio di filati in diverse tonalità che conferiscono una texture delicata ma originale. Realizzati in PL FR intrinsecamente ignifugo, sono ecologici, certificati OEKO-TEX®, riciclati e riciclabili.

The Melange palette consists of fabrics created by interweaving yarns in different shades to give a delicate yet original texture. Made of inherently flame-retardant PL FR, they are environmentally friendly, OEKO-TEX® certified, recycled and recyclable.



tessuto riciclato
recycled fabric



tessuto riciclabile
recyclable fabric



acustico
acoustic



colori speciali
special colours

***Questa palette colori è applicabile alle seguenti collezioni:**

Flora, Silhouette, Trame, Alma, Marea, Oblique e Smooth.

This colour palette is available for the following collections:

Flora, Silhouette, Trame, Alma, Marea, Oblique and Smooth.



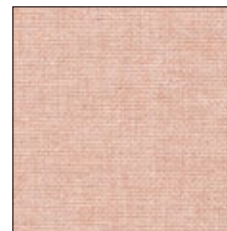
GRIGIO CHIARO
COD 4613



LINO
COD 4515



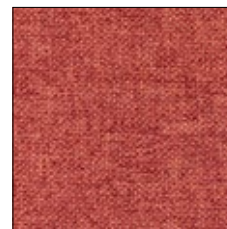
TORTORA
COD 4513



ROSA CIPRIA
COD 4153



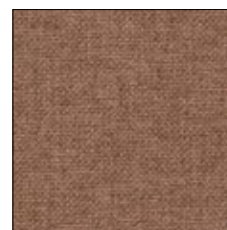
ROSA ANTICO
COD 4154



MATTONE
COD 4211



GRAFITE
COD 4559



TERRA
COD 4155



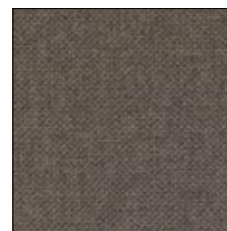
VERDE SALVIA
COD 4466



MUSCHIO
COD 4468



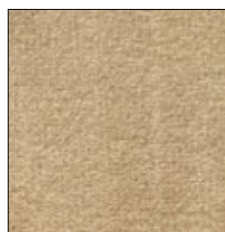
OLIVA
COD 4462



FUMO
COD 4615

PALETTE **VELVET**

Flora, Silhouette, Trame, Alma, Marea, Oblique e Smooth Collections*



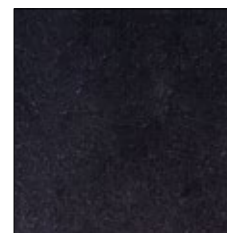
BEIGE
COD 001



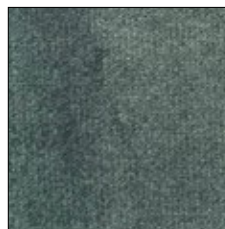
PEARL
COD 002



STEEL
COD 003



DEEP BLUE
COD 004



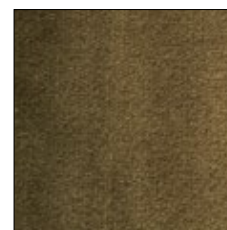
OCTANE
COD 005



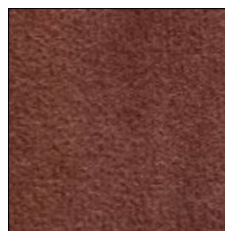
PETROL
COD 006



ELEPHANT
COD 007



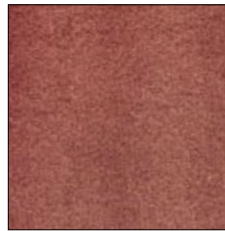
FOREST
COD 008



CUOIO
COD 009



GOLD
COD 010



SALMON
COD 011



PINK
COD 012

La palette Velvet è pensata per chi cerca una morbidezza senza paragoni e desidera rivestimenti capaci di unire comfort tattile ed espressività visiva. Le sue tonalità decise e sofisticate offrono infinite possibilità compositive: mixati tra loro danno vita ad ambienti accoglienti o dal carattere audace, ma sempre di grande impatto.

The Velvet palette is designed for those who seek unparalleled softness and who desire wall coverings that combine tactile comfort and visual expressiveness. Its bold and sophisticated shades offer endless compositional possibilities: When mixed together, they create cosy environments or spaces with a bold character, always making a great impact.

***Questa palette colori è applicabile alle seguenti collezioni:**

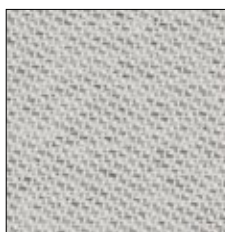
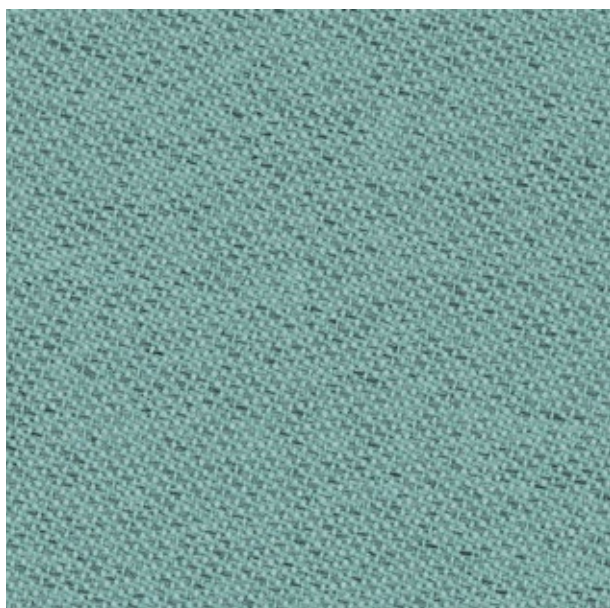
Flora, Silhouette, Trame, Alma, Marea, Oblique e Smooth.

This colour palette is available for the following collections:

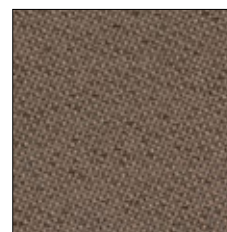
Flora, Silhouette, Trame, Alma, Marea, Oblique and Smooth.

PALETTE ARIA

Frame Collection*



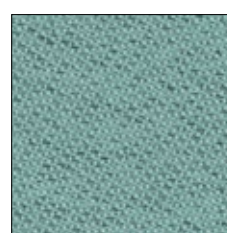
GRIGIO CHIARO
COD 60114



TORTORA
COD 61175



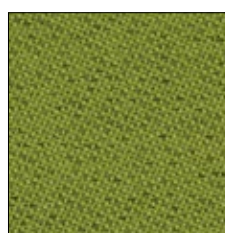
INDACO
COD 60081



TURCHESE
COD 68189

Colori accesi e vibranti definiscono la palette Aria, una selezione di tessuti che coniuga estetica, sostenibilità e prestazioni tecniche. Realizzati al 100% in poliestere ignifugo riciclato, questi tessuti contribuiscono a rendere la Frame Collection una scelta consapevole e responsabile, sia dal punto di vista ambientale che progettuale.

The Aria palette is defined by bright and vibrant colours. This selection of fabrics combines aesthetics, sustainability and technical performance. Made from 100% recycled fire-retardant polyester, these fabrics contribute to making the Frame Collection an environmentally and design-conscious choice.



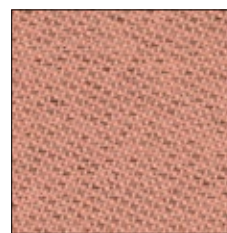
VERDE
COD 68197



CANARINO
COD 62086



ARANCIO
COD 63099



ROSA
COD 63092

***Questa palette colori è applicabile alla seguente collezione:**

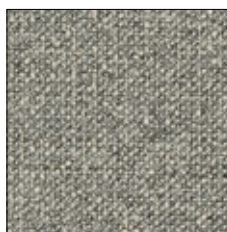
Frame.

This colour palette is available for the following collection:

Frame.

PALETTE TERRANOVA

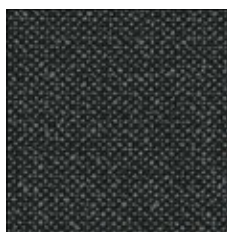
Frame Collection*



POLVERE
COD 61310



AZZURRO
COD 66281



GRIGIO SCURO
COD 60365



CAFFÈ
COD 61314

La palette di colori Terranova è caratterizzata da tonalità profonde e intense. Questa linea di tessuti prende forma da un processo di riciclo tessile-tessile che rigenera materiali preesistenti, dando vita a superfici decorative uniche. La trama volutamente irregolare con sfumature più profonde è il segno distintivo di un approccio sostenibile.

The Terranova colour palette is characterised by deep, intense tones. This fabric line takes shape through a textile-textile recycling process that regenerates pre-existing materials, resulting in unique decorative surfaces. The deliberately irregular weave with deeper shades is the hallmark of a sustainable approach.



MATTONE
COD 61312



CANNELLA
COD 63148



SENAPE
COD 62154



VERDONE
COD 68321

***Questa palette colori è applicabile alla seguente collezione:
Frame.**

*This colour palette is available for the following collection:
Frame.*

Isospace è un brand Tecnasfalti

SEDE LEGALE

via dell'Industria, 12
Loc. Francolino
20074 Carpiano (MI)

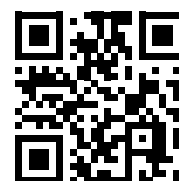
SEDE OPERATIVA

via Aldo Moro, 12
Loc. Francolino
20074 Carpiano (MI)

T. +39 02 9885701
E. hello@isospace.it

© isospace

isospace



isospace.it