



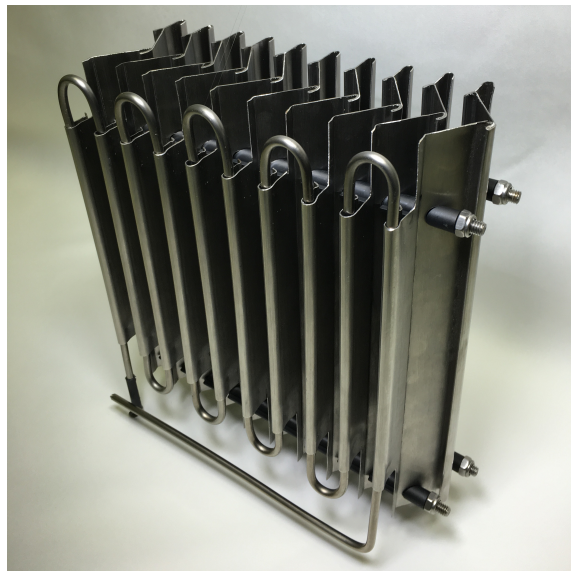
## SETH and SETH-MI HEATED LOUVERS

Veotec SETH high efficiency trace heated louvers prevent inlet icing on air intakes and exhaust. These heated louver panels provide anti-icing protection in freezing conditions preventing harmful buildup of snow, ice or hoar frost. SETH aluminum, galvanized, or stainless-steel vane separators also efficiently remove sea spray, mist, drift, rain droplet, bulk water, salt and other fine aerosol from air intakes.

High quality electrical heating elements are installed into the leading edge of very high efficiency marine louvers to reliably melt snow and freezing precipitation on contact and drain it away. Self-regulating and constant wattage heating elements are used for electrically heated louvers.

Veotec SETH (shown to the right without a frame) is our most popular heated louver recommended for snow melt applications up to 500 FPM face velocity. SETH is specified and successfully applied in areas like North Dakota, Newfoundland and Siberia. Energy efficient self-regulating heating elements use a polymer core that varies its electrical resistance with temperature to provide up to a nominal 400 watts per ft<sup>2</sup> (4.3 KW/m<sup>2</sup>) of heat output. As ambient air and louver surface temperatures drop the heating element output increases to regulate heating. The heating cable systems are approved for use in nonhazardous and hazardous locations through various approval agencies.

This self-regulating style louver panel is typically installed as a “plug and play” style panel without a standard control panel but various controllers are available and customizable on request.



Veotec SETH MI constant wattage heated louvers (shown to the left without a frame) heat beyond normal snow melt recommendations to produce the maximum surface temperature available from our electric heated louver options and prevent ice formation under extreme conditions. High output mineral insulated heating cables provide a nominal output of 160 W/m producing up to 800 W/ft<sup>2</sup> of heat output. These exceptional constant wattage heating cable systems are approved for use in nonhazardous and hazardous locations through various approval agencies.

All constant wattage heating systems require a control panel with standard adjustable temperature controls. Several aspects of the control panel are customizable.

Note: double element, SETH-2 and SETH-MI-2 systems are available for both styles listed above at twice the nominal power listed with heating elements installed in both the leading and trailing edges of the louver profile.

