

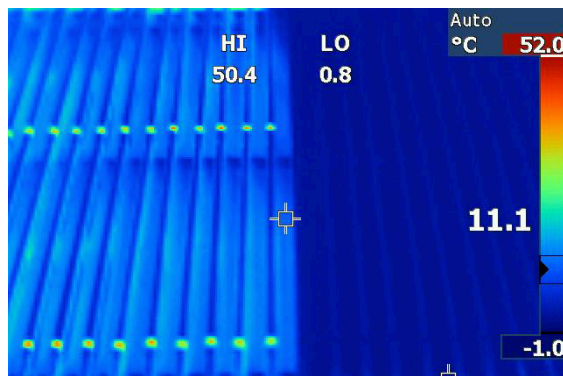


SETH - ELECTRICALLY HEATED SE SERIES

Veotec SETH high efficiency trace heated louvers prevent inlet icing on air intakes and exhaust. These heated vane separator air inlets provide anti-icing protection in freezing conditions preventing harmful buildup of snow, ice or hoar frost. SETH aluminum or stainless steel vane separators also efficiently remove sea spray, mist, drift, rain droplet, bulk water, salt and other fine aerosol from air intakes. These inlets can also be customized to include features like fans, dampers, filters, and acoustic attenuation.



Veotec SETH is designed to maintain an optimal surface temperature and prevent ice formation. Each louver is trace heated to provide a uniform temperature rise across the whole panel. Self-regulating heating elements provide up to 400 watts per ft² (4.3 KW/m²) of heat output. The system can be safe area or hazardous area rated to suit your requirements. Other higher and lower power options available.



Thermal image of SETH vs. standard SE1 in 0C ambient



ISO 9001:2015 Certified Quality Management System



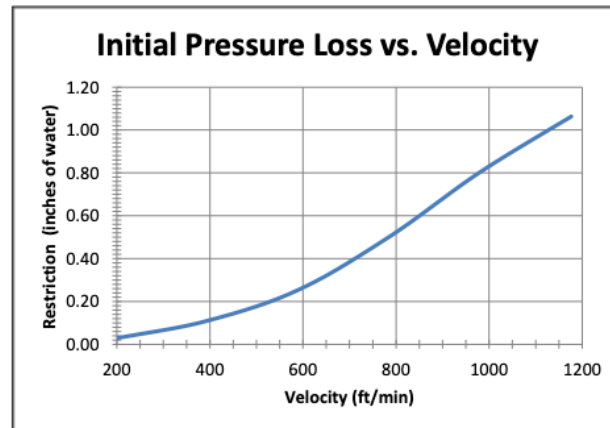
SETH - ELECTRICALLY HEATED SE SERIES

Features

- High efficiency water droplet / mist / drift removal
- Superior anti-icing
- Excellent bulk water removal
- Low airflow resistance
- Compact size and light weight
- Durable corrosion resistant materials
- Robust construction ensures
- Long term reliability with low maintenance
- Available in custom sizes to suit customer needs
- Many water drainage options are available
- Available in aluminum and stainless-steel construction



Restriction (Independent Test Data)



Water Removal Efficiency (Independent Test Data)

