

# Architectural Products - Proudly Made in America



Columns • Pergolas • Fireplace Mantels • Cornice • Balustrades • Crown Molding • Architectural Accents

# TABLE OF CONTENTS

About Us	3
Columns and Column Covers	4
PVC Column Wraps	5
Pergolas, Arbors, & Trellises	6
Cornice	7
Balustrade Systems	8
Balusters: 1-3/4" to 5-1/4"	9
Balusters: 5-1/4" to 7"	10
Fireplaces and G.F.R.C. Façade Elements	11
Shutters	12
Crown Molding	13
Ceiling Medallions	14
Ceiling Medallions	15
Domes	16

This brochure demonstrates the diversity of our product offering but doesn't even scratch the surface when it comes to the various products and styles that we offer. We showcase some of our popular items but we have thousands of millwork products that do not appear in this publication. Please visit our website for more specific information on columns, balustrades, cornice, pergolas, fireplaces, and capitals and bases. For everything else, please contact us and we will direct you to other resources that are more comprehensive and demonstrate the extent of our offering for those particular products. In addition to the products found here, we also offer corbels & brackets, niches, louvers, cupulas, ceiling domes, pilasters, crosshead & pediments, flexible moldings, window & wall panels, artificial beams, ceiling panels and decorative ceiling tiles, and an assortment of carved wood millwork. We have the most comprehensive online CAD library in the industry and will provide CAD files for any standard or custom items upon request that aren't listed online. Thank you for your interest in our products and we look forward to working with you on your current and future projects.





# ABOUT US

Started by two brothers, Royal Corinthian is a family owned manufacturer and wholesale distributor of building products that last a lifetime. We have been manufacturing in America since 1994 and focus on emulating architectural products using composite technology. We specialize in architectural columns, balustrade systems, cornice, crown molding, fireplace surrounds, pergolas/arbors/trellises, exterior shutters, ceiling medallions, domes, and a variety of millwork made from fiberglass, FRP, GFRC, PVC, synthetic stone, high density polyurethane, and vinyl. Our promise is to provide you with the highest quality products at the fastest lead-times and competitive prices.

## WHAT SETS US APART

- Lifetime Warranties
- Made in America
- Class A fire rated products
- Comprehensive CAD library
- In-house architectural staff to assist with design
- Molds made in-house resulting in inexpensive custom products
- Diversity of materials that can be mixed and matched
- Maintenance Free and Low Maintenance Products
- Budget sensitive as well as top of the line premium products
- Tallest and widest columns in the industry
- Most diverse balustrade/baluster offering in the industry
- Thousands of crown moldings, medallions, corbels, etc. to choose from
- Low prices and fast lead-times



# ARCHITECTURAL COLUMNS AND COLUMN COVERS



RoyalCast  
Fiberglass Columns



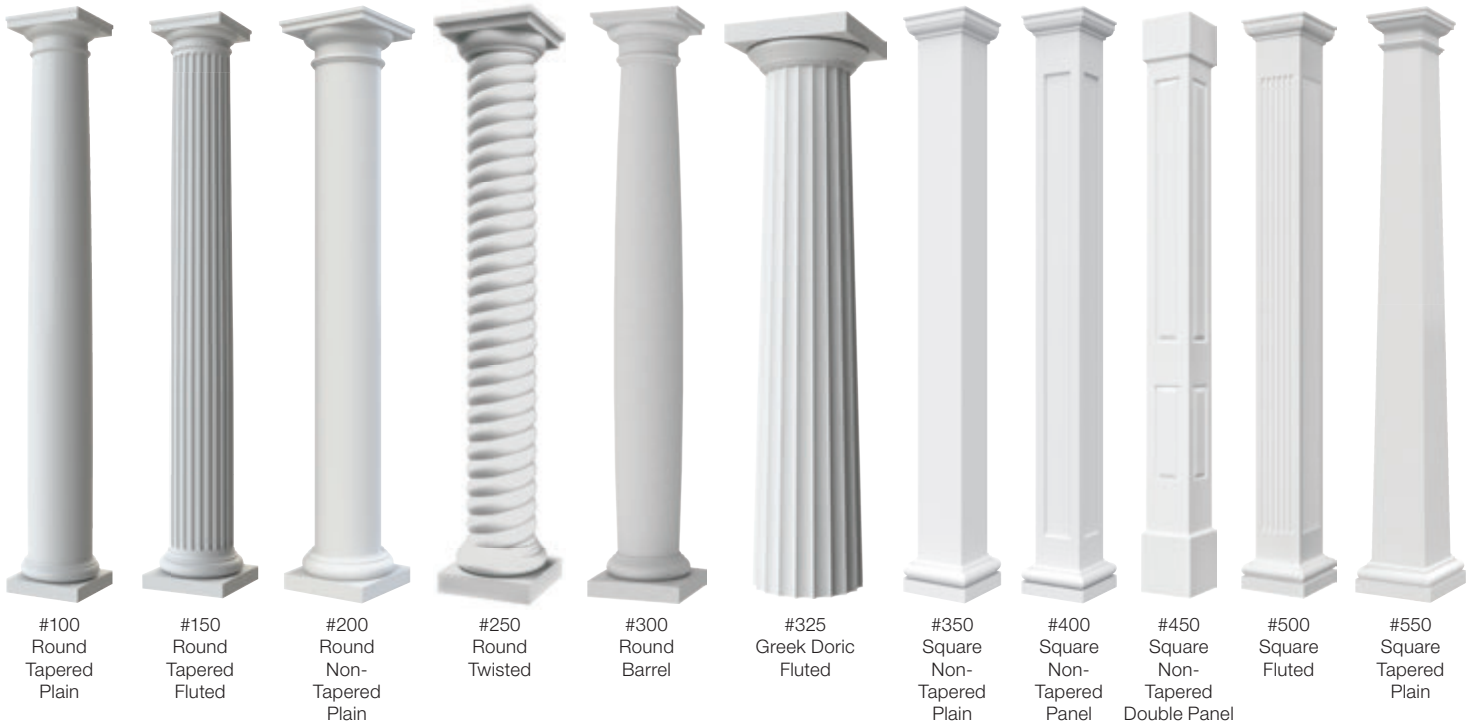
RoyaLite  
Fiberglass FRP Column Covers



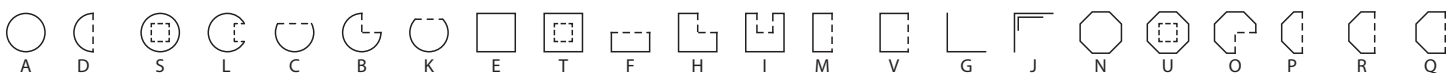
RoyalStone  
Synthetic Stone Columns

Royal Corinthian manufactures many types of architectural columns which can be mixed and matched on a single project due to uniformity. We offer RoyalCast™ fiberglass columns, RoyaLite™ lightweight fiberglass columns, RoyalStone™ synthetic stone columns, and RoyalConcrete™ eps backed G.F.R.C columns (PVC column wraps on next page). All of our columns emulate the architecture of the Greeks and Romans but use composite technology to insure longevity. Our RoyaLite™ column covers (except for RoyaLite™ pultruded square columns which are load-bearing) and RoyalWrap™ PVC column wraps are shipped in halves and can be factory assembled to act as whole columns. G.F.R.C. columns are made in segments and are built up on site. The rest of the columns can be factory split into a variety of plan types and can be used as column covers as well.

## STYLES

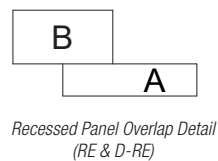
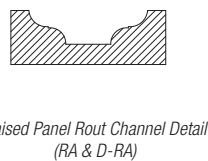
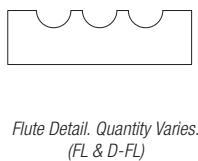
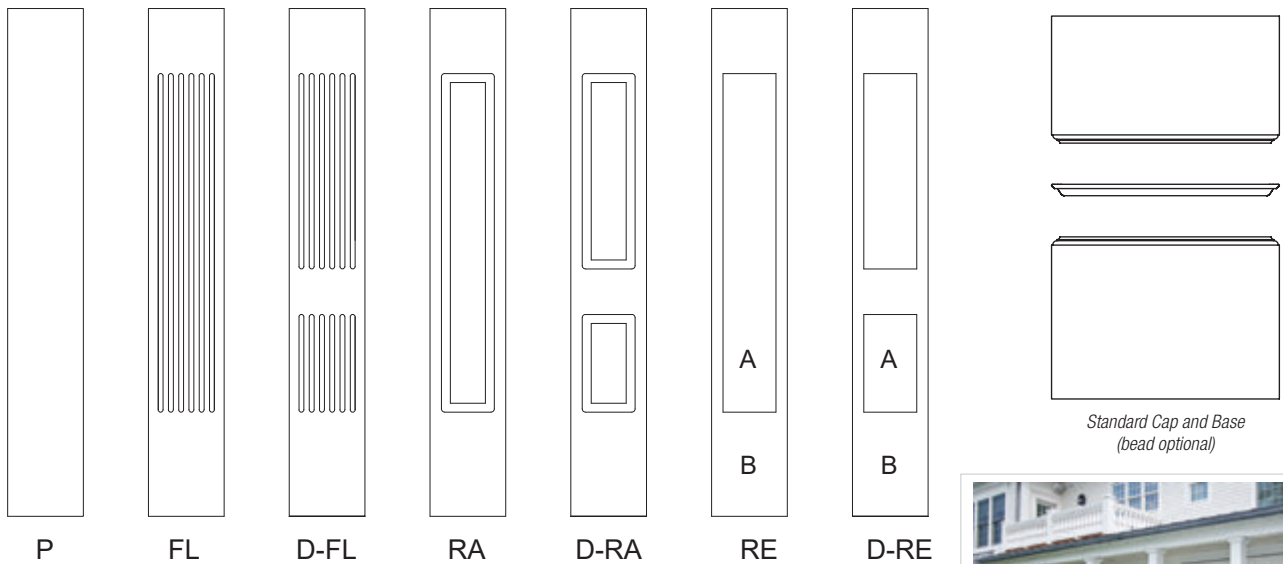


## PLAN TYPES

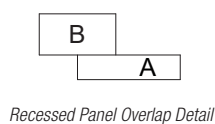
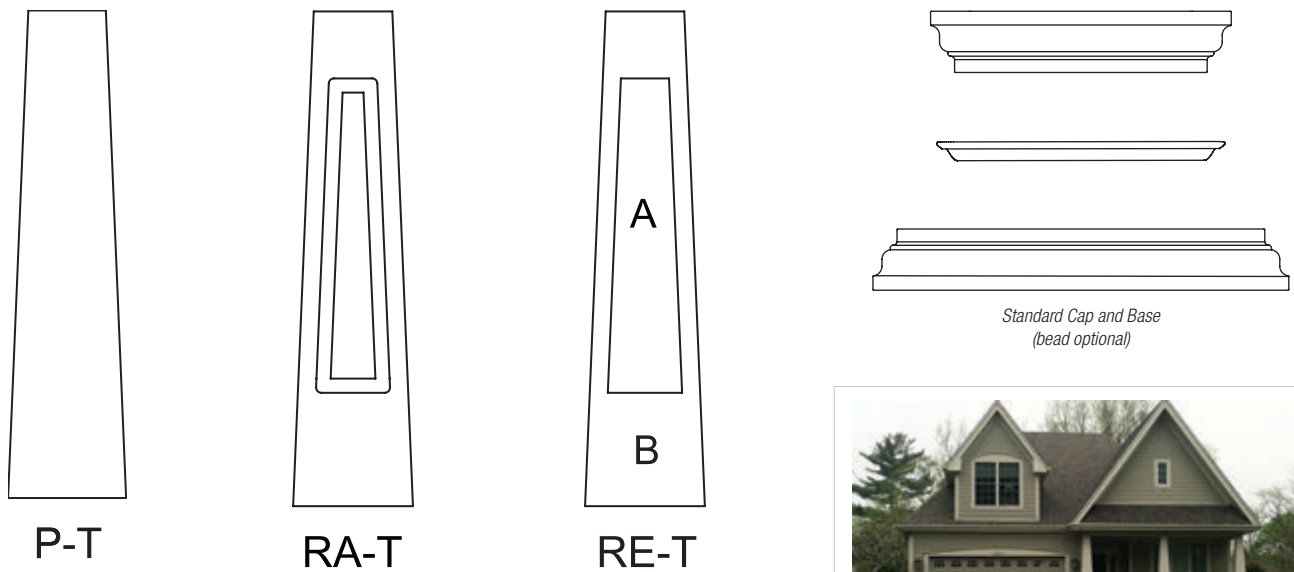


# RoyalWrap Columns Cellular PVC Column Wraps

## SQUARE NON-TAPERED



## SQUARE TAPERED





# FIBERGLASS PERGOLAS, ARBORS, & TRELLISES

Our fiberglass pergolas are structural and are pound for pound stronger than steel but lighter than wood. They will never rot, melt, bow, warp, rattle in the wind, or get infested with insects. We offer our pergola kits and custom designs in paint-grade versions or infinite prefinished color options. Round and Square columns are available with an assortment of capitals and bases. We don't like to offer pergolas made from any other materials because this pergola is unrivaled but if you are budget sensitive, we have vinyl pergolas, arbors, and trellises in many styles and sizes.



Pergola Kit with Round Columns

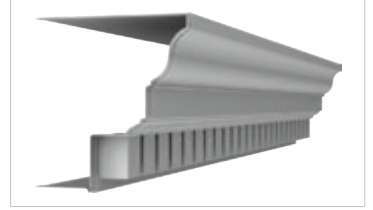


Pergola Kit with Square Columns



# FIBERGLASS CORNICE

Royal Corinthian manufactures RoyalLite™ fiberglass reinforced polymer “FRP” cornice and entablature using general purpose or Class A fire rated resins. This cornice is made with 35% to 40% fiberglass content which makes it pound for pound stronger than steel. It is made from the same material as fiberglass boat hulls so when it comes to holding up to the elements, there is no better material to use. A typical cornice will come in 8’ lengths and inside/outside corners as well as custom corners are available. All of our cornices can be adjusted by plugging our molds so if you like a particular cornice but need to make some alterations, it may be possible. Our in-house mold department makes custom cornice relatively inexpensive so please feel free to design your own and we will make it a reality. This product offers the greatest advantage over our other cornices when paint-grade or pre-finished cornice of intricate detail and of larger proportion that will last a lifetime is required. For more options, please see our polyurethane crown moldings.



CR101x10  
27-1/16 P x 27 H x 120 L



CR102x10  
25-15/16 P x 16-1/16 H x 120 L



CR103x10  
12-5/16 P x 39-5/16 H x 120 L



CR104x8  
7" P x 12" H x 96" L



CR105x8  
23-3/16 P x 13 H x 96 L



CR106x8  
10" P x 24" H x 96" L



CR107x8  
9-15/16 P x 30 H x 96 L



CR108x8  
16-1/8 P x 16-3/8 H x 96 L



CR109x8  
9-7/16 P x 16-13/16 H x 96 L



CR110x8  
12-7/8" P x 13-3/4" H x 96" L



CR110FXx8  
12-7/8" P x 26" H x 96" L



CR111x8  
3" P x 10-11/16" H x 96" L



CR112x8  
13" P x 15" H x 96" L



CR113x8  
13" P x 26-1/2" H x 96" L



CR114x8  
22-7/8" P x 29" H x 96" L



CR115x8  
15-1/2" P x 16-11/16" H x 96" L



CR116x8  
13-3/8" P x 22-1/4" H x 96" L



CR117x8  
22-1/2" P x 23-1/2" H x 96" L



CR118x8  
22-3/4" P x 26" H x 96 L



CR120x8  
13" P x 35" H x 96" L



CR121x8  
16-1/8" P x 17-1/2" H x 96" L



CR122x8  
12" P x 16" H x 96" L



CR123x8  
11-5/8" P x 21-5/8" H x 96" L



CR124x8  
6-3/4" P x 7" H x 96" L



CR125x8  
15-3/4" P x 13-7/16" H x 96" L



CR126x8  
3-1/4" P x 34-1/4" H x 96" L



CR127x8  
6-1/2" P x 50" H x 96" L



CR128x8  
2" P x 12" H x 96" L



CR129x8  
49-1/8" P x 41-3/4" H x 96" L



CR130x4  
17-7/16" P x 23-1/2" H x 48" L



CR131x12  
17-1/2" P x 36-3/8" H x 144" L



CR132x8  
24-1/2" P x 50-13/16" H x 96" L



CR133x8  
26-3/16" P x 35" H x 96" L



# BALUSTRADE SYSTEMS

SYNTHETIC STONE, POLYURETHANE, FIBERGLASS

Royal Corinthian manufactures 3 structural balustrade systems made from composite materials that will last for generations. Our balustrades, which are comprised of balusters or spindles, top/bottom rails, newel posts and caps, decorative finials, and installation hardware are available in RoyalCast™ composite fiberglass, RoyalStone™ polymer stone, and RoyalThane™ high density polyurethane. Each of our materials have been independently tested by engineering firms and exceed commercial and residential building code requirements for a structural balustrade. All of our systems are lightweight systems when compared to natural stone but some are significantly lighter than others. We are the only manufacturer that offers all 3 materials in the same styles so the same project can use our RoyalStone™ balustrades on the front porch and our lightweight polyurethane system on a rooftop that has weight restrictions. The configurations below are just a sampling of the railings, balusters, and newel posts that we offer: Please go to our website [www.royalcorinthian.com](http://www.royalcorinthian.com) to see additional railings, balusters, and posts.

## ROYALCAST™ AND ROYALSTONE™ BALUSTRADE SYSTEMS



Rail Width: 4-1/4"



Rail Width: 5-3/4"



Rail Width: 6"



Rail Width: 6-3/4"



Rail Width: 7-1/2"



Rail Width: 10"

## ROYALCAST™, ROYALSTONE™, AND ROYALTHANE™ BALUSTRADE SYSTEMS



Rail Width: 4"



Rail Width: 6"



Rail Width: 7"



# BALUSTERS

Regular vs. Stair Baluster

All of our balusters can be manufactured from synthetic stone, fiberglass, G.F.R.C., and high density polyurethane. Some of our balusters are prefinished while others are paint-grade. You may use our balusters in combination with our railings or use them with your own. All of our balusters can be shortened and we are able to easily increase the height of each baluster by adding to the plinth(s). Custom balusters are fairly inexpensive so feel free to design your own or have us replicate a historic baluster for restoration. All of our balusters are considered light-weight but we can make them heavier as well as lighter to meet your structural requirements.



\*Balusters below are pictured as regular balusters not stair



Item # B7428  
28" x 1-3/4"



Item # B7432  
32" x 1-3/4"



Item # B7028  
28" x 2-1/2"



Item # B7028-S  
33-3/4" x 2-1/2"



Item # 0215  
25-7/8" x 3"



Item # 0221  
23-7/8" x 3-1/8"



Item # 0230-16  
16" x 3-1/4"



Item # 0240  
28-5/8" x 3-1/4"



Item # 0216  
18-3/4" x 3-3/16"



Item # 0230  
24-5/8" x 3-3/8"



Item # 0205  
26-1/8" x 3-3/8"



Item # 0225  
29-5/8" x 3-3/8"



Item # 0205-31  
31-1/2" x 3-3/8"



Item # 0230-37  
36-7/8" x 3-11/16"



Item # 0209-15  
14-7/8" x 4-1/4"



Item # Bal-22  
22" x 4-1/2"



Item # B7225  
24-3/4" x 4-3/8"



Item # 0210-31  
28-1/2" x 4-3/4"



Item # 0209  
26-5/8" x 4-1/2"



Item # Bal-28  
28" x 4-1/2"



Item # 0210-15  
15-3/4" x 4-5/8"



Item # 0210-19  
19-3/8" x 4-7/8"



Item # 0212  
23-5/8" x 4-7/8"



Item # 0219-23  
23" x 5"



Item # 0219  
23-3/4" x 5"



Item # 0210  
23-1/2" x 5-1/4"



Item # 0235  
23-1/2" x 5-1/4"

# BALUSTERS



Item # 0211  
23-3/4" x 5-1/4"



Item # 0210-26  
25-3/4" x 5-1/4"



Item # 0210-30  
29-7/8" x 5-1/4"



Item # 0210-35  
34-3/4" x 5-1/4"



Item # B7022-1  
22" x 5-1/4"



Item # B7022  
22" x 5-1/4"



Item # B7022-1S  
28" x 5-1/4"



Item # B7022-3  
28" x 5-1/4"



Item # 0236  
23-5/8" x 5-3/8"



Item # 0210-29  
29-5/16" x 5-1/2"



Item # 0210-32  
29-7/16" x 5-1/2"



Item # 0217  
24-5/8" x 5-5/8"



Item # 0245  
27-1/2" x 6-1/2"

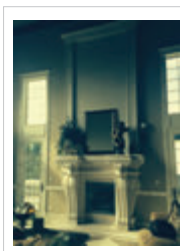
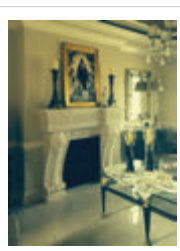
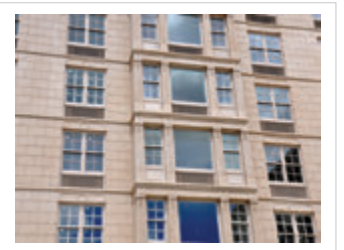


Item # 0245-34  
34" x 7"



# G.F.R.C. FIREPLACE SURROUNDS AND FAÇADE ELEMENT

Royal Corinthian offers fireplace surrounds and anything imaginable made from EPS backed G.F.R.C. and standard G.F.R.C. The EPS backed option results in a lightweight concrete product that is very customizable and insulated. The fireplaces are made from the same G.F.R.C. materials that we use to make our stove hoods, door and window surrounds, columns, balustrades, and exterior façade elements. We have many standard designs to choose from and, due to our in-house mold making department, custom concrete products are fairly inexpensive. This product comes in 2 standard textures and 6 standard colors; however, we are able to color match to your desired color. RoyalConcrete™ is a Class A fire rated product according to ASTM E 84 testing requirements and is for interior and exterior application.





# EXTERIOR SHUTTERS

Royal Corinthian offers many styles of shutters in a plethora of colors and sizes made from vinyl, fiberglass, PVC, polymer composite, and authentic wood. Most of our shutters come with a lifetime warranty and can be rated for hurricane areas.



# CROWN MOLDING

In addition to our fiberglass cornice, Royal Corinthian offers thousands of crown molding profiles in polyurethane. Polyurethane is a high-density foam that looks and feels like wood but will not rot, crack, or split. The moldings come primed and range from 8' to 16' contractor lengths. We offer small simple profiles to large elaborate designs, which are significantly less expensive than wood alternatives. As always, customization is an option with Royal Corinthian and we can make crown molding from any material that we offer.



MLD1001-12  
8" H. x 4" P. x 144" L.



MLD253-16  
7-5/8" H. x 2-3/8" P. x 192" L.



MLD371-16  
11" H. x 6-1/2" P. x 192" L.



MLD404-16  
3-13/16" H. x 2-1/2" P. x 192" L.



MLD406-16  
4-1/16" H. x 3-5/16" P. x 192" L.



MLD410-12  
6-7/8" H. x 3-15/64" P. x 144" L.



MLD411-16  
7" H. x 4-1/2" P. x 192" L.



MLD421-12  
14-1/2" H. x 10" P. x 144" L.



MLD430-12  
8" H. x 5-3/4" P. x 146" L.



MLD449-16  
8-1/4" H. x 7-11/32" P. x 192" L.



MLD451-16  
3" H. x 3-3/16" P. x 192" L.



MLD452-12  
3" H. x 2-1/32" P. x 144" L.



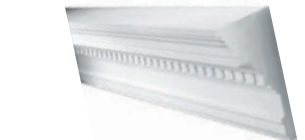
MLD453-16  
6-11/16" H. x 4-5/8" P. x 192" L.



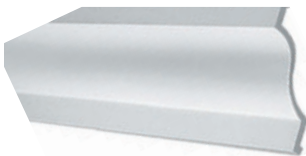
MLD454-12  
4-1/32" H. x 3-39/64" P. x 144" L.



MLD456-12  
4-3/8" H. x 2-3/4" P. x 144" L.



MLD461-8  
19-3/4" H. x 10" P. x 96" L.



MLD528-12  
4-1/2" H. x 9-7/16" P. x 144" L. 21" W.



MLD539-16  
12" H. x 4-1/2" P. x 192" L.



MLD552-12  
3-1/2" H. x 2-1/16" P. x 144" L.



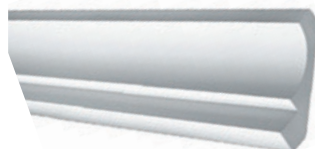
MLD555-12  
10-11/16" H. x 5-9/32" P. x 144" L.



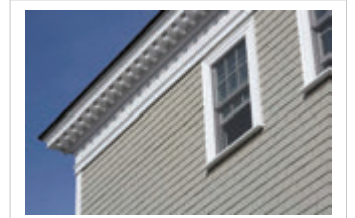
MLD569-12  
7-17/32" H. x 5-3/4" P. x 144" L.



MLD580-12  
12-3/8" H. x 7-3/32" P. x 144" L.

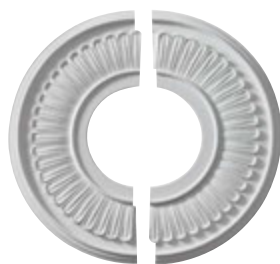


MLD582-12  
7-7/8" H. x 7-7/8" P. x 144" L.



# CEILING MEDALLIONS

Royal Corinthian offers hundreds of ceiling medallions made from high density polyurethane ranging from less than 8" in diameter to over 74". These medallions come primed ready for final paint finish. In addition to our ability to make custom medallions in polyurethane, we also offer many stainable wood medallions. As with all of our products, we are capable of making ceiling medallions from any of our other materials: fiberglass, synthetic stone, G.F.R.C., and PVC.



CM-16JE2  
5-11/16" ID x 15-1/2" OD



CM-30AL  
1" ID x 30-1/4" OD



CM152625  
12-1/2" OD x 3-7/8" ID x 3/4" P



CM162904  
18-1/8" OD x 3-1/2" ID x 2-3/4" P



CM162927  
9" OD x 4-3/8" ID x 1/2" P



CM162949  
11-7/8" OD x 3-5/8" ID x 7/8" P



CM162953  
17-5/8" OD x 3-5/8" ID x 7/8" P



CM167716  
7-5/8" OD x 1" P



CM169840  
12" OD x 8" ID x 1/2" P



CM169845  
22" OD x 6-1/4" ID



CM169871  
11-1/4" OD



CM169881  
7-1/2" OD x 2-1/2" ID x 1-1/8" P



CM169893  
35-7/8" W x 22-1/2" H x 4-3/8" P



CM171815  
28-3/8" OD x 4-1/2" ID x 1-5/8" P



CM171929  
7-7/8" OD x 1-1/8" P



CM171952  
23-5/8" OD x 4" ID x 1-1/2" P





RM0505-A  
4-3/4" W. x 4-3/4" H. x 3/4" P.



RM0505-B  
5-1/4" W. x 5-1/4" H. x 1/2" P.



RM0604  
5-3/4" W. x 4-3/8" H. x 15/16" P.



RM1717-SM  
16-7/8" D. x 1" P. x 3-1/8" Hole



RM1818-B  
17-3/4" D. x 7/8" P. x 4-1/4" Hole



RM2020  
20-3/4" D. x 2-3/4" P.  
Center Flat Area 3"



RM2121-FL-27  
26-1/2" D. x 2-1/2" P. x 4" Hole



RM2222  
22-1/8" D. x 3/4" P. x 2-3/8" Hole



RM2424-EG-30  
30" D. x 1-9/16" P. x 2" Hole



RM2424-SM-33  
32-1/2" D. x 2-1/8" P. x 1" Hole



RM2626  
25-1/2" D. x 1-1/16" P. x 3-1/4" Hole



RM2626-FL  
25-1/8" D. x 1-1/8" P. x 4" Hole



RM3030  
31-3/8" D. x 2-1/4" P.



RM3333  
32-1/2" D. x 2" P. x 3-3/4"  
Flat center area, No hole



RM37321-10  
9-7/8" D. x 5/8" P. x 4" Hole



RM37520-32  
32-1/2" D. x 3-7/16" P. x 1" Hole



RM37544-24  
24" D. x 2-1/4" P. x 4" Hole



RM37552-33  
32-1/2" D. x 2-1/8" P. x 4" Hole



RM37559-16  
15-7/8" D. x 1" P. x 4" Hole



RM37568-3042  
29-3/4" W. x 41-5/8" H. x 1-3/8" P. x 4" Hole

# DOMES

Royal Corinthian manufactures fiberglass “FRP” domes as well as high density polyurethane domes for both interior and exterior use. Polyurethane domes tend to be smaller, come in one piece, and come primed ready for final paint finish. Fiberglass domes range from smaller one piece units to very large multipiece units. The domes can be plant assembled or assembled on site. The segment line between each section can be left visible or filled in prior to priming and painting. Typically, our fiberglass domes come with a paintable white marine grade gelcoat but can come in a variety of colors, stone finishes, or granite finishes. Pictured are some of our standard domes but due to our in-house mold capabilities a custom dome is fairly inexpensive so please design or have us design a dome that suits your needs or vision.



CD64x13, 64" wide x 13" deep  
(made as a single unit)



CD89x16, 89-1/4" wide x 15-11/16" deep  
(made as a single unit)



CD158x30, 158" wide x 30" deep  
(made in 8 segments/factory assembly available)



CD330x156, 330-1/2" wide x 156-7/16" deep  
(made in 18 segments/factory assembly available)





ROYAL CORINTHIAN®

603 Fenton Lane  
West Chicago, IL 60185

Toll Free: 888-265-8661

Fax: 888-344-2937

[www.RoyalCorinthian.com](http://www.RoyalCorinthian.com)

[royalcor@royalcorinthian.com](mailto:royalcor@royalcorinthian.com)