

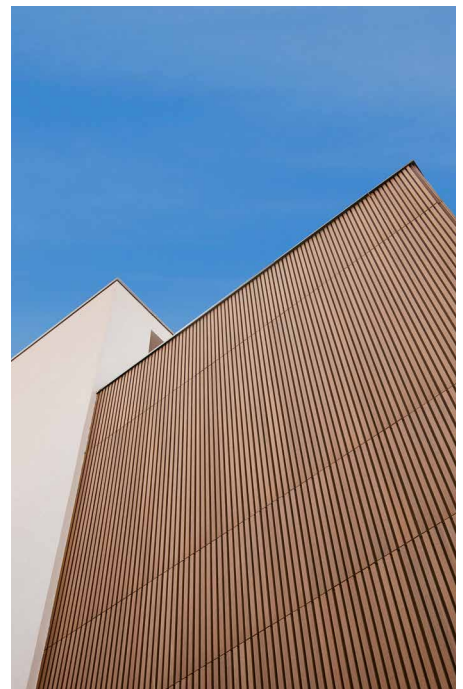
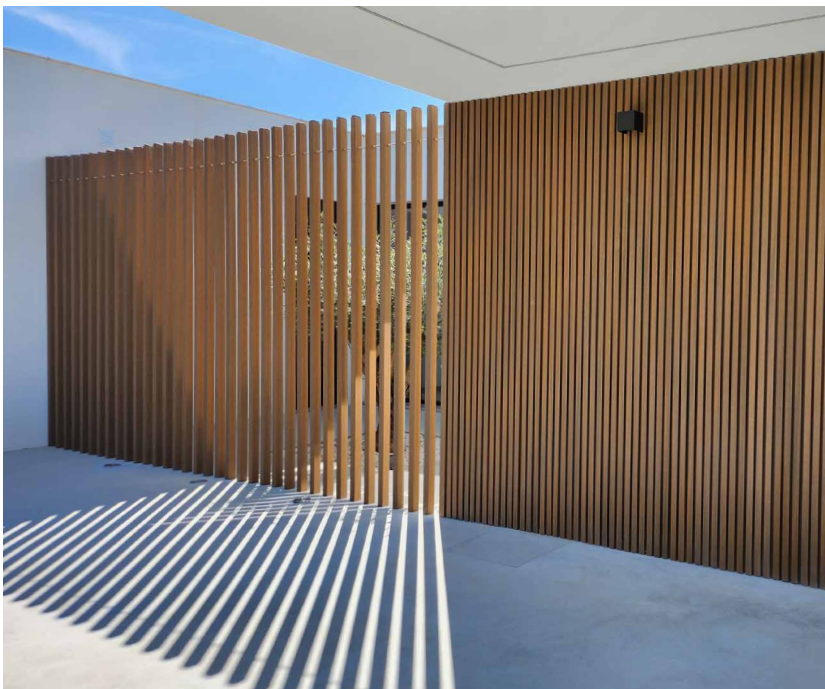
LOOK BOOK

20
25



ARCHITECTURAL PROJECTS

fiberdeck.com



Architectural inspirations with WEO® Cladding

Exceptional architectural projects, whether villas, commercial spaces or urban buildings, have enhanced their design with Fiberdeck® WEO® cladding. This lookbook highlights how our cladding integrates naturally into all environments and blends with a variety of materials.

Combining aesthetics, durability and ease of maintenance, WEO® cladding, made from 95% recycled plastic, is weather resistant and offers a high-performance solution for environmentally conscious architects and designers.

We would like to thank all the professionals who have revealed its full potential by combining it with other materials to create unique architectural compositions. More than just a catalogue, this lookbook is a real source of inspiration for tomorrow's projects.

Nicolas Tant

Founder of Fiberdeck®







WEO®

Bio-sourced cladding with outstanding performance

WEO® cladding boards have been developed using the latest co-extrusion technologies to ensure a product that is both weather-resistant and fade-resistant for 20 years, while utilizing 95% waste materials in its manufacturing. A waterproof polyethylene layer protects the wood from moisture absorption and stabilizes the material. Expansion is also minimized. Maintenance is limited to simple cleaning.



Vilablareix

Modern Villa

Nestled in Vilablareix, Spain, this modern villa is the result of a bold vision, driven by a family seeking comfort and harmony with their surroundings.

Designed by architects Juanjo Ojeda and Miguel Gámez, this project showcases the full potential of WEO® cladding by Fiberdeck®, an aesthetic and functional choice that combines contemporary design with outstanding technical performance.

Dive into the details of this unique construction and be inspired by the perfect blend of architecture, sustainable materials, and an exceptional living environment.

LOCATED
ARCHITECT
BUILDER
CUSTOMER
PHOTOS
FEATURED PRODUCT

Vilablareix, Spain
Juanjo Okeda
Miguel Gàmez Lopez - Actual Instal
Particular client
Marc Rovira Pons
WEO®35 - Teak







Ardenya 57

Modern Villa

Located in the stunning Mas Trempat residential area in Sant Feliu de Guíxols, on the Costa Brava, this modern villa embodies Mediterranean elegance and architectural innovation. With a total surface area of 314 m² spread across three levels (basement, ground floor, and first floor) and set on a 449 m² plot, this home is a model of sustainable design and timeless aesthetics.

Just five minutes by car from the beaches of Sant Feliu de Guíxols and S'Agaró, this four-sided villa benefits from optimal exposure. The southwest-facing façade is a key feature, capturing natural light and making every space bright and welcoming.

Rubén Milena Segura, architect, together with Roger Reyner, a designer from his team, selected WEO®35 cladding to enhance the villa's façade.

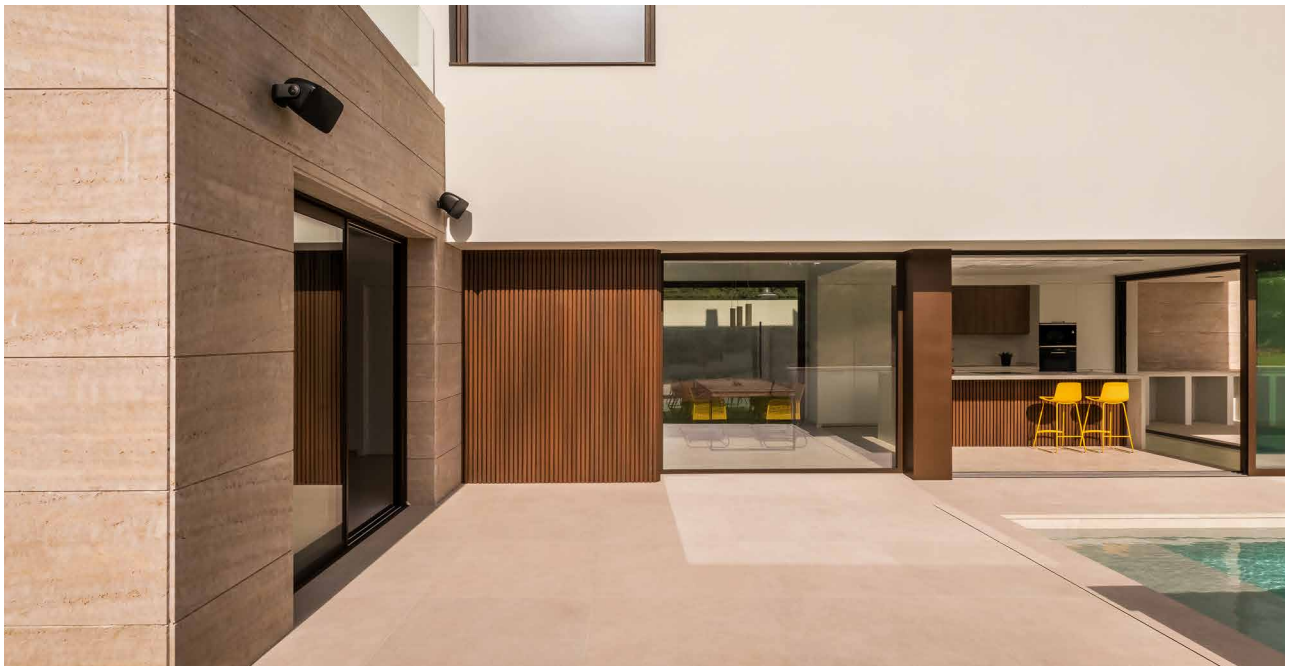
«We chose it for its natural look, which blends perfectly with the other materials used in the project, and for its maintenance-free advantage, unlike natural wood.»

LOCATED
ARCHITECT
BUILDER
CUSTOMER
PHOTOS
FEATURED PRODUCT

Sant Feliu de Guixold, Spain
Rubén Milena
Adar Estructures
Particular customer
Sergio López
WEO®35 - Ipé







Slovakia

Modern Villa

In the heart of a rapidly evolving Slovak urban landscape, this modern villa perfectly embodies contemporary architecture, where elegance and performance come together. Designed with clean lines and a bold aesthetic, it stands out with its WEO® composite cladding, an aesthetic and functional choice that enhances the entire project.

This cladding brings a warm and authentic touch to the minimalist façade. Its finely structured slats interact with light, creating subtle depth effects that reinforce the villa's modern identity.

This project brilliantly showcases the ability of WEO cladding to seamlessly integrate into contemporary architecture, offering the perfect balance between modernity, originality, and durability. A must-have reference for those seeking a stylish and timeless façade.

LOCATED
DISTRIBUTOR
FEATURED PRODUCT

Slovakia
NemiTrade
WEO®35 - Teak



Balboa

Modern Villa

«This is the project of a lifetime, the culmination of 18 months of work and 20 years of labour.»

For this contemporary villa with bold lines, the architect chose WEO®35 cladding, a material that combines the aesthetics of wood with exceptional durability and ease of maintenance. Its ability to faithfully reproduce the look of natural wood, while ensuring long-term color stability, makes it an ideal choice for modern and timeless architecture.

In this project, characterized by the combination of raw concrete and large glass openings, WEO® cladding plays a key role. It adds warmth to the façade, creating a harmonious contrast with mineral materials while enhancing the minimalist elegance of the overall design. Thanks to its textured surface, it subtly interacts with light and gives character to the exterior.

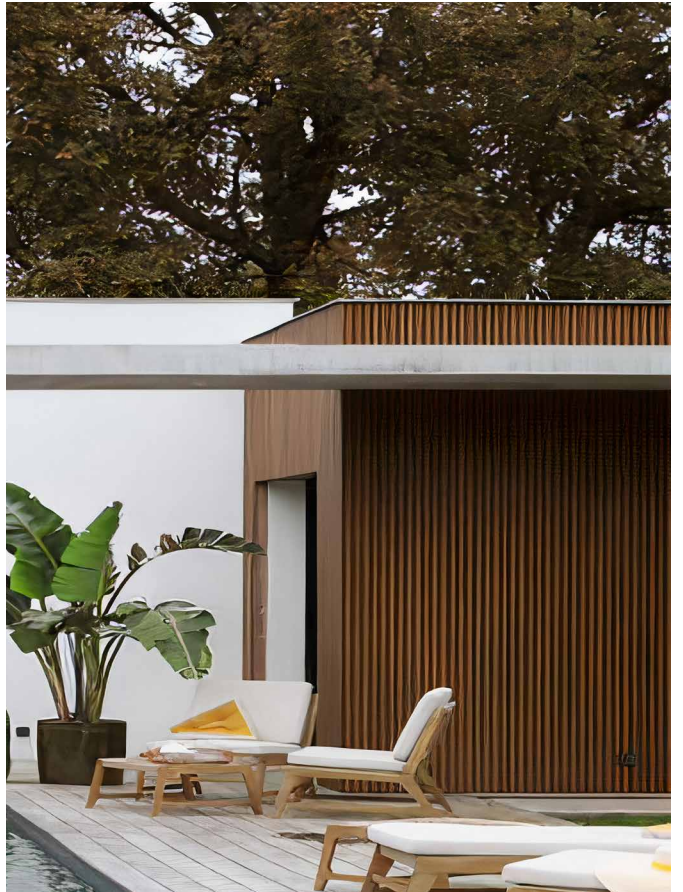
Beyond its aesthetic appeal, WEO® cladding ensures weather resistance and requires no maintenance, guaranteeing optimal longevity without compromising on design. A perfect solution for those seeking an elegant, durable, and contemporary façade.

LOCATED
CUSTOMER
ARCHITECT
PHOTOS
FEATURED PRODUCT

Les landes, France
Movrel Invest
Alexandre Movrel
Maïa Chă
WEO®35 - Teak







Cypress

Residential building

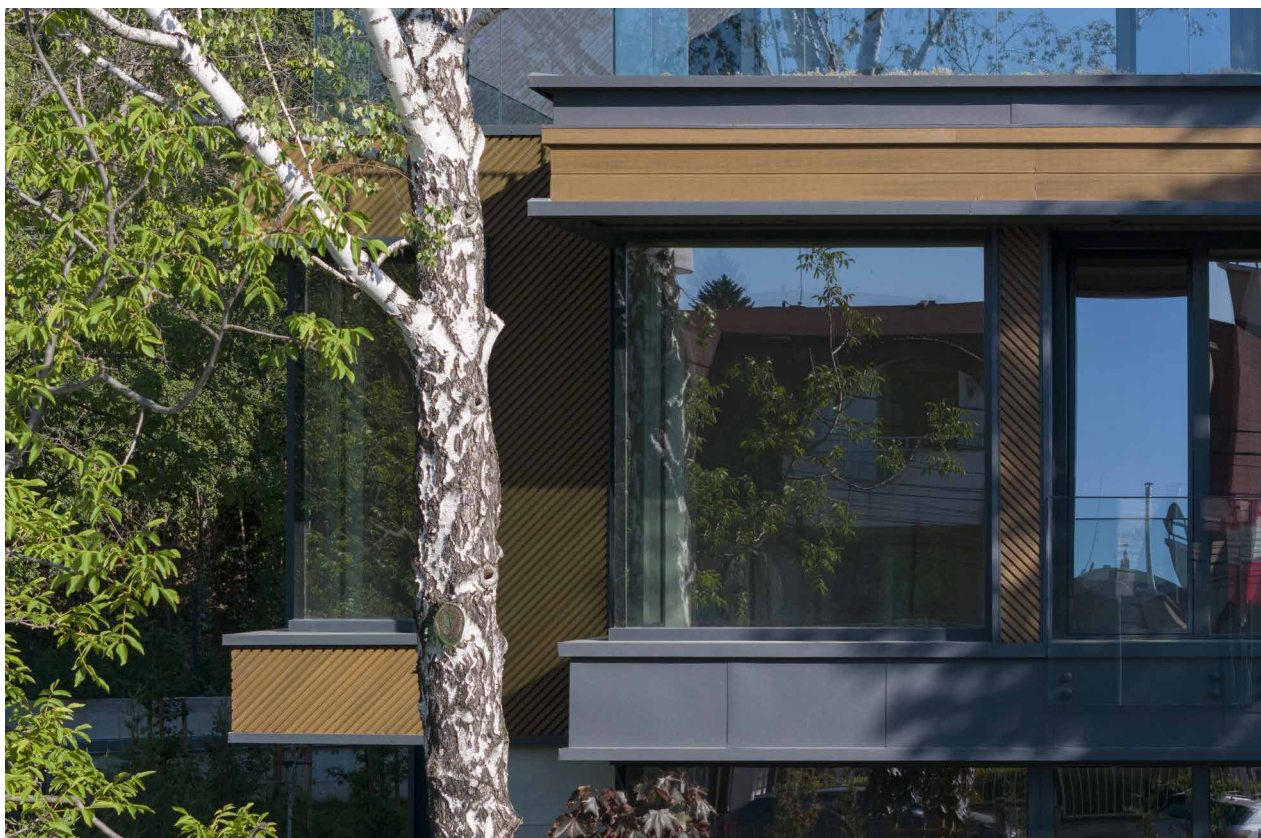
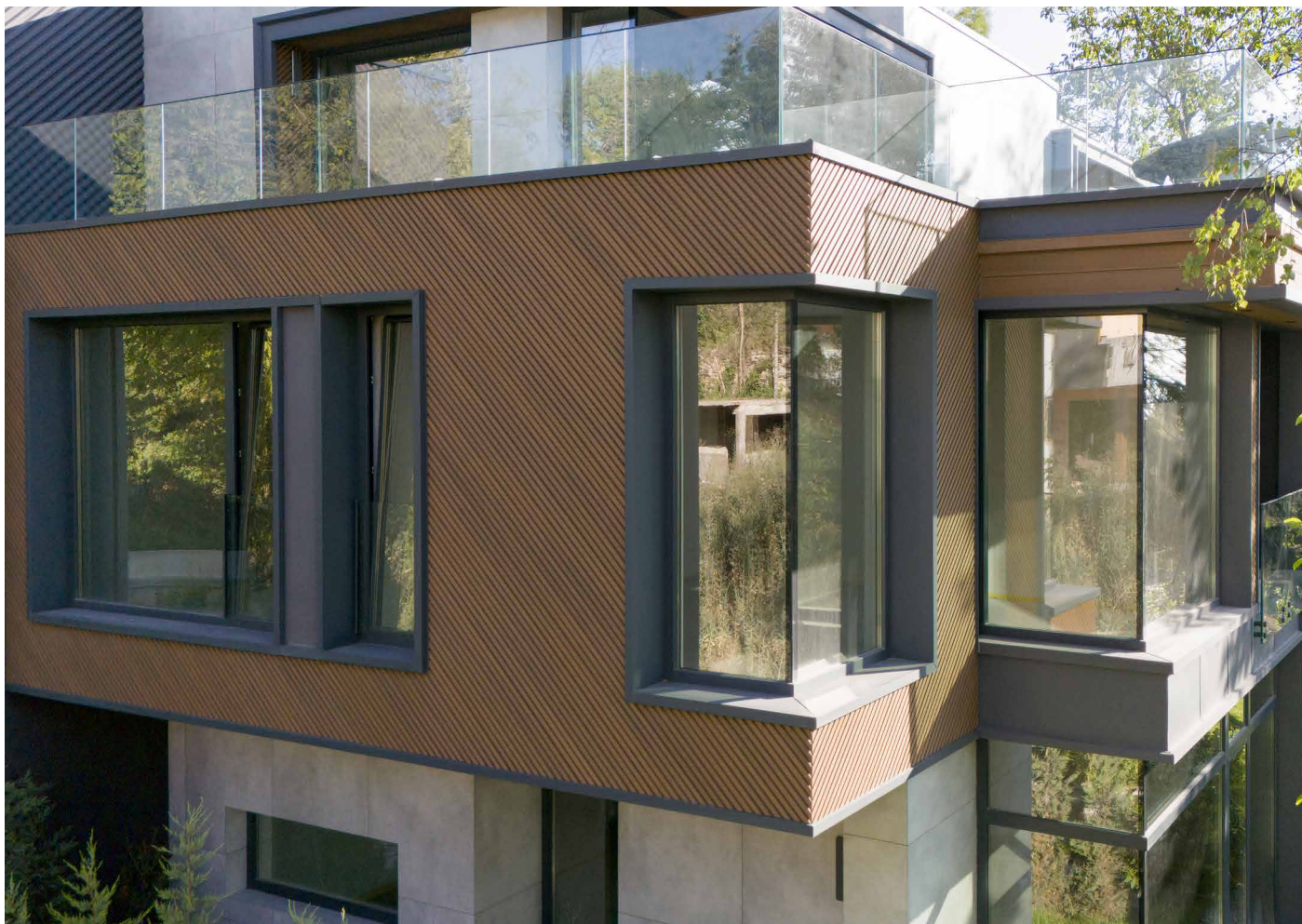
Located in the prestigious Malinova Valley district of Sofia, this building perfectly embodies the fusion of modernity and sophistication. Its sleek, contemporary design is enhanced by WEO® cladding, which plays a key role in the project's aesthetics.

The originality of this achievement lies in the diagonal installation of the cladding, a bold architectural approach that energizes the façade and gives it a unique character. This design choice creates a striking visual effect, accentuating the building's lines and adding a distinct graphic dimension to the overall structure.

With this project, WEO® cladding once again demonstrates its ability to adapt to the most demanding architectural visions, offering a solution that is both aesthetic, durable, and innovative.

LOCATED
ARCHITECT
CUSTOMER
FEATURED PRODUCT

Sofia, Bulgaria
ATG Design
ModExte
WEO®35 - Teak & WEO® Essential



Bunarjika

Private House

In the heart of an urban Bulgarian landscape, this grand private house stands out with its contemporary and imposing architecture. Its bold design is enhanced by the use of WEO® cladding, which gives the façade an elegant and timeless appearance.

Combining modernity and durability, WEO® cladding lends this project a unique character, where the authenticity of wood blends seamlessly with the surrounding urban environment.

Thanks to its innovative properties, WEO® cladding ensures weather resistance and long-lasting color stability, requiring no maintenance. An ideal solution for those seeking a stylish, high-performance, and long-lasting façade.

LOCATED**ARCHITECT****DISTRIBUTOR****BUILDER NAME****FEATURED PRODUCT**

Plovdiv, Bulgaria

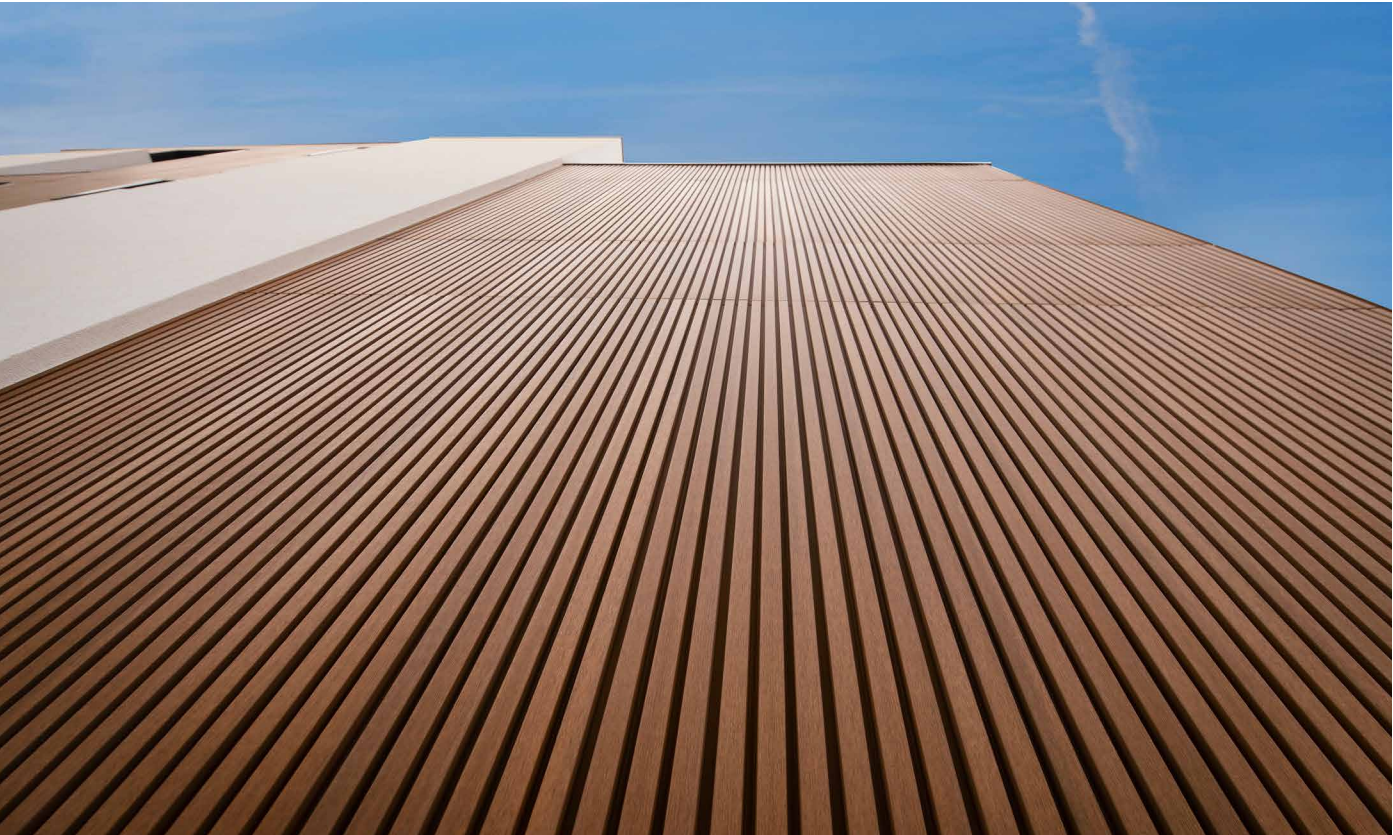
Shape Concept Ltd

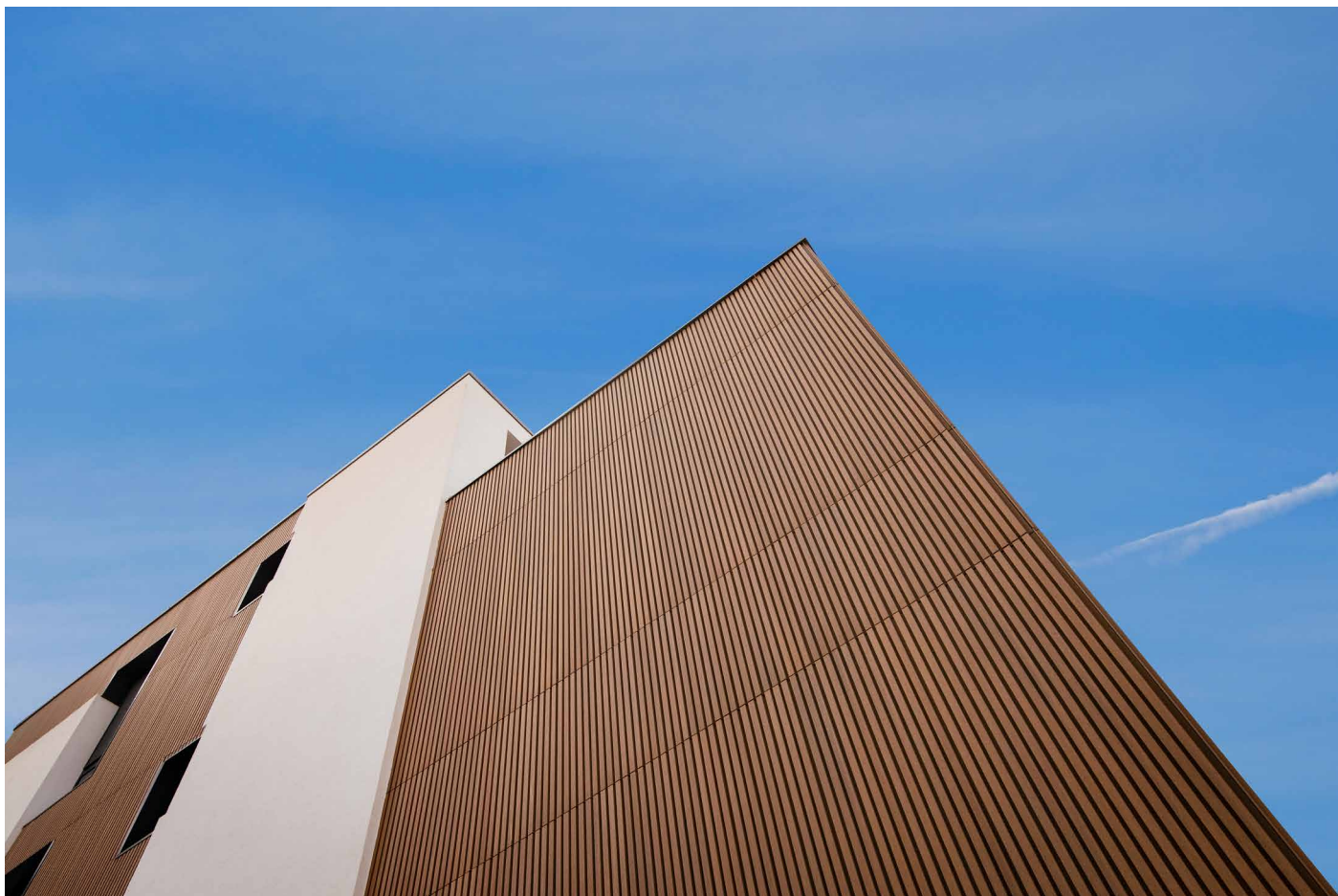
ModExte

Duo Invest LLC

WEO®35 - Teak







The ROVIP Company

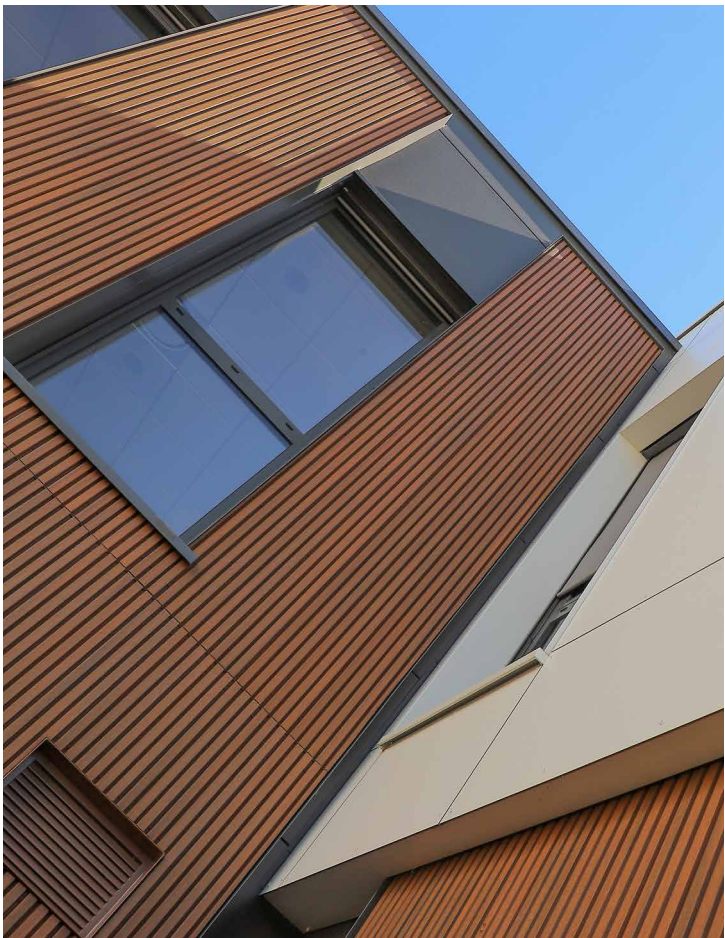
For this ambitious project, 3,000 m² of photovoltaic panels have been installed, making this professional building a benchmark in energy efficiency and environmental responsibility. To complement this sustainable approach, the architect and the company chose WEO® cladding to cover the façade.

With its modern design and structured texture, WEO® cladding adds a strong aesthetic dimension while ensuring excellent weather resistance and long-term color stability. Its natural appearance and ultra-matte finish blend seamlessly with the building's architecture, reinforcing its contemporary identity.

With this project, WEO® once again demonstrates its ability to combine innovation, performance, and aesthetics, offering a solution that is both sustainable, elegant, and environmentally friendly for professional infrastructures.

LOCATED
ARCHITECT
CUSTOMER
PROJECT MANAGER
BUILDER NAME
PHOTOS
FEATURED PRODUCT

Céyzériat, France
Atelier 71
Société ROVIP
SFCA
ROVIP
Lisa Maronnier
WEO®35 - Teak



Villa P.

Modern Villa

This exceptional villa, fully renovated, offers one of the most breathtaking views of the French Riviera. Every detail has been carefully reimagined to blend architectural refinement with seamless landscape integration, creating a warm and contemporary atmosphere.

To accentuate its elegant lines and ensure long-lasting aesthetic coherence, the building's façade is clad in WEO® composite cladding. This innovative material, with its subtly textured wood finish, provides a natural and authentic look, while guaranteeing optimal resistance to weather conditions.

The outdoor spaces extend this harmony with Brooklyn composite decking, which combines design and durability. Its refined finish and sophisticated color create a seamless connection with the Mediterranean landscape, enhancing the villa's timeless character.

An aesthetic and functional choice, designed for architects seeking elegant, long-lasting solutions that meet the demands of contemporary architecture.

LOCATED

ARCHITECT

PHOTOS

FEATURED PRODUCT

Cannes, France

Marcoux Mathern Associés

Marion Roudil Photograph

Brooklyn Decking - Teak & WEO®35 - Teak
& Brise Soleil Teak







Le Perreux

Private House

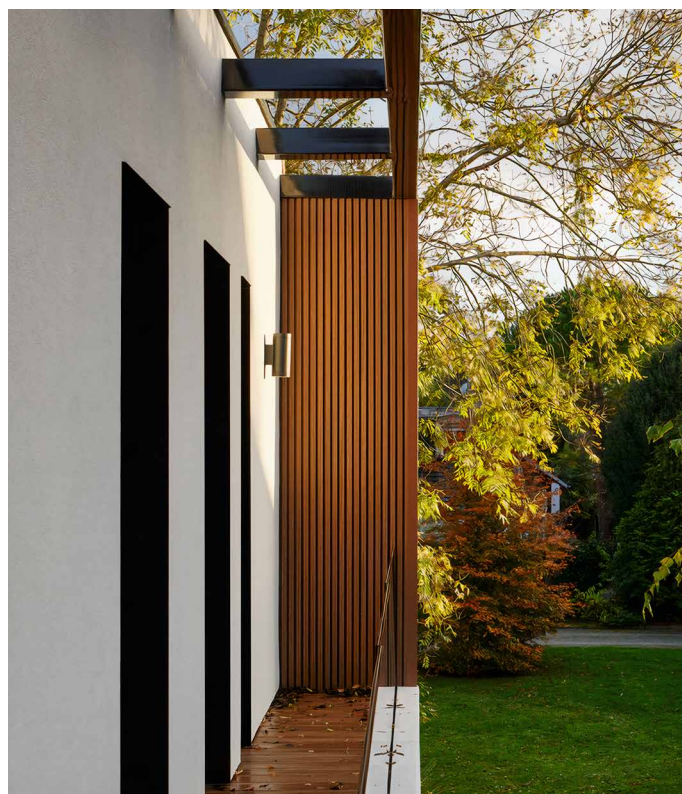
This family home, originally built in the 1950s, has been redesigned to embrace a refined contemporary architecture while preserving its original charm. Thanks to a meticulous renovation, it now features clean lines and a timeless façade design.

The WEO® cladding plays a central role in this transformation, bringing both aesthetic appeal and long-lasting performance. Its natural wood-like appearance and textured finish add character to the building's exterior while blending harmoniously with its surroundings.

Beyond its elegance, WEO® cladding ensures excellent weather resistance and long-term color stability, offering a solution that is durable, modern, and maintenance-free. A perfect example of how innovative materials can enhance contemporary architectural projects.

LOCATED
ARCHITECT
PHOTOS
FEATURED PRODUCT

Le Perreux-sur-Marne, France
Gommez-Vaez Architect
Francis Amiand
WEO®35 - Teak



Villa Piel

Private House

This impressive villa in Greece, with its sleek and bold lines, embodies an architectural vision where minimalism and innovation come together. Designed to blend harmoniously with its surroundings while asserting its unique character, it pushes the boundaries of contemporary design.

The Fiberdeck WEO® cladding plays a key role in this project, giving the façade a sophisticated aesthetic and a natural texture that elegantly contrasts with the building's geometric volumes. Its subtle relief captures the light and enhances the interplay of shadows, adding depth and elegance to the overall structure.

Combining modern materials and visionary design, this villa perfectly illustrates how WEO® cladding enables the creation of spaces that are timeless, high-performing, and undeniably stylish.

LOCATED
CUSTOMER
ARCHITECT
PHOTOS
FEATURED PRODUCT

Thessaloniki, Greece
Materials Ark
Ark4lab of architecture
Giorgos Sfakianakis
WEO®35 - Teak







AG House

Private House

In Lithuania, this bold and modern house stands out with its refined architecture that plays with volumes and light. To enhance its elegance, WEO® composite cladding was chosen, providing the façade with a perfect balance between authenticity and modernity.

With its textured surface, WEO® cladding captures natural light during the day, creating subtle shadow effects that bring dynamism to the building's aesthetic. At nightfall, it reveals another facet of its character, enhanced by architectural lighting that accentuates its depth and sophistication.

With this project, WEO® cladding once again proves to be an essential choice for architects seeking design, durability, and authenticity, both day and night.

LOCATED**DISTRIBUTOR****ARCHITECT****PHOTOS****FEATURED PRODUCT**

Vilnius, Lithuania

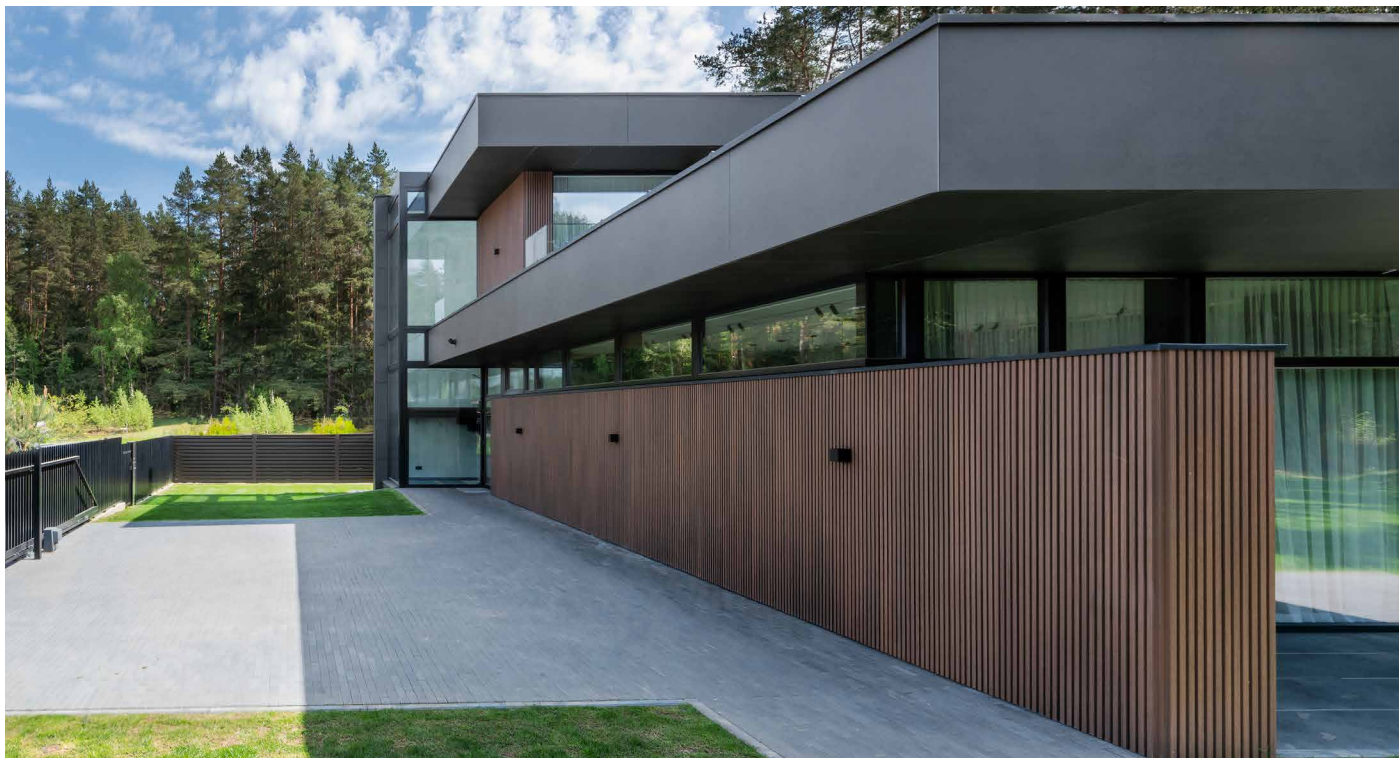
Daisera

ArchLAB Studio

Leonas Garbačauskas

WEO®35 - Teak







Design House

Private House

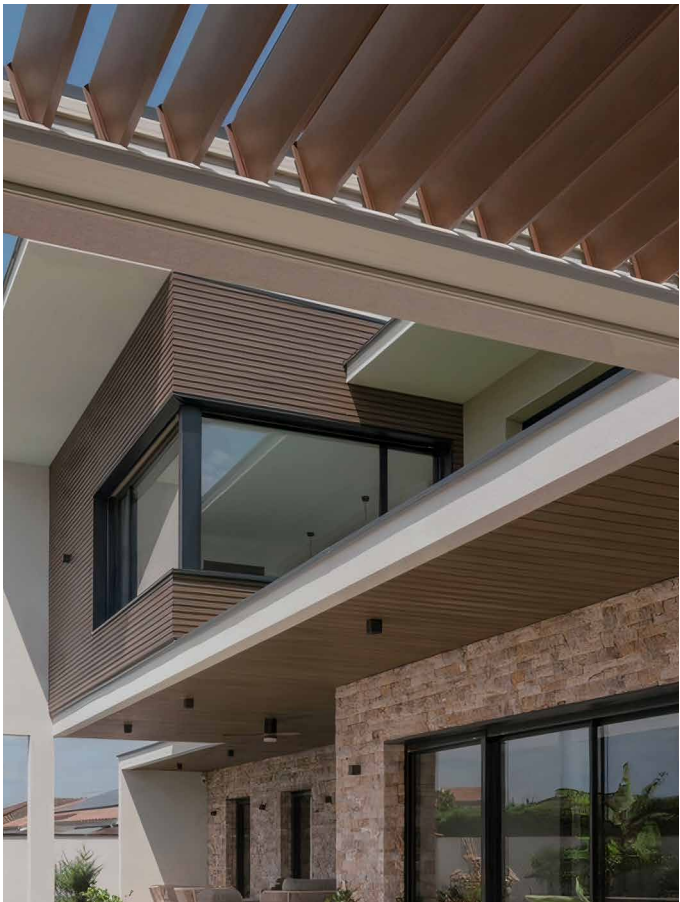
This contemporary home stands out with its sleek design and the use of high-quality materials. Its façade, clad in WEO® composite cladding, gives the structure a modern yet warm aesthetic while ensuring excellent durability against the elements.

To enhance the harmony between indoor and outdoor spaces, Brooklyn decking boards have been used not only for the flooring but also for the ceiling, creating a seamless and elegant visual continuity.

A project that perfectly embodies the balance between design, comfort, and landscape integration, offering its residents a unique and timeless living environment.

LOCATED
DISTRIBUTOR
CUSTOMER
ARCHITECT
PHOTOS
FEATURED PRODUCT

Pusignan, France
DEOLBOIS
Mr and Mrs Jacquard
Jean-Marc Berby
Sabine Serrad
Brooklyn Decking - Ipé & WEO®60 -Ipé



Lote 267

Private House

Located in the heart of Portugal's sunlit landscape, this modern villa perfectly embodies contemporary architecture. Designed with clean lines and high-quality materials, it stands out through the use of WEO® composite cladding, which enhances the façade with elegance and character.

Paired with white concrete walls, the cladding creates a subtle harmony between modernity and authenticity. Its structured relief captures sunlight throughout the day, generating delicate shadow plays that bring the façade to life.

This villa thus represents an architectural approach where innovation meets aesthetics, offering a serene living environment that blends seamlessly into its natural surroundings.

LOCATED
DISTRIBUTOR
ARCHITECT
PHOTOS
FEATURED PRODUCT

Quinta do Perú, Portugal
Fiberwood
Atelier DXF
Vitor Maia
WEO®35 - Teak



Lote 259

Private House

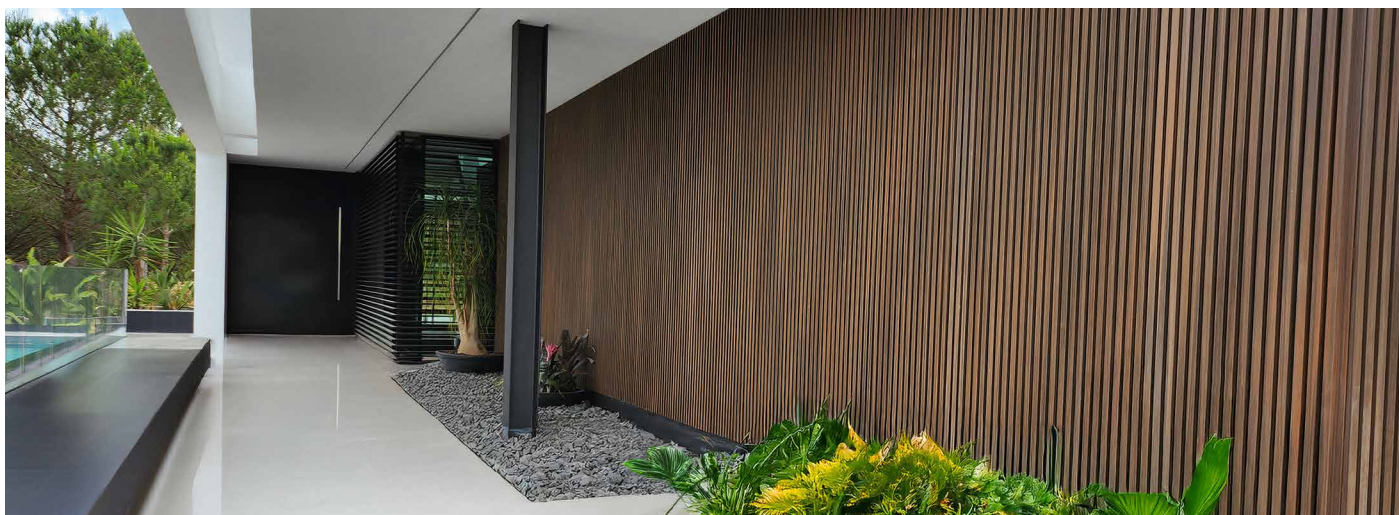
Nestled in a spectacular setting, this ultra-modern villa plays with contrasts to create an architecture that is both bold and refined. The WEO® composite cladding is used as a central element, achieving a perfect balance between the texture of wood, the purity of concrete, and the transparency of large glass openings.

With its natural appearance and ultra-matte finish, the cladding blends seamlessly into the overall design while adding warmth to the minimalist architecture.

Resistant to salty sea spray and intense UV exposure, WEO® cladding maintains its flawless appearance over the years, ensuring a façade that is both aesthetic and durable. An ideal choice for a villa where design and performance go hand in hand.

LOCATED
DISTRIBUTOR
ARCHITECT
PHOTOS
FEATURED PRODUCT

Quinta do Perú, Portugal
Fiberwood
Atelier DXF
Vitor Maia
WEO®35 - Teak



Praceta

Private House

Located in the heart of a dynamic residential neighborhood in Portugal, this contemporary villa showcases a distinctly urban architectural style, characterized by the use of raw concrete and expansive glass surfaces. Its structured and minimalist design achieves a delicate balance thanks to the WEO® Brise Soleil cladding, which softens the overall aesthetic by playing with light and adding warmth to the façade.

By gently filtering sunlight, the WEO® Brise Soleil cladding creates a dynamic interplay of light and shadow that enhances the façade throughout the day. It softens the rigidity of the concrete while preserving the privacy of the interior spaces.

Chosen for its refined aesthetics and durability, this composite cladding seamlessly integrates into the Portuguese urban landscape, once again proving its ability to enhance both natural settings and modern city architecture.

LOCATED
DISTRIBUTOR
ARCHITECT
PHOTOS
FEATURED PRODUCT

Cascais, Portugal
Fiberwood
Atelier AP
Vitor Maia
Brise Soleil - Cedar



Wunderhaus

Private House

For over 20 years, Nico Rensch and his team have been crafting exceptional residences worldwide. In 2018, they launched Wunderhaus, an innovative architectural concept that combines contemporary aesthetics, energy efficiency, and environmental responsibility.

Designed to the highest standards, Wunderhaus is a positive energy home, equipped with the latest technological advancements in insulation, energy production, and storage. Every detail has been meticulously considered to create a living space that is both elegant, high-performing, and sustainable.

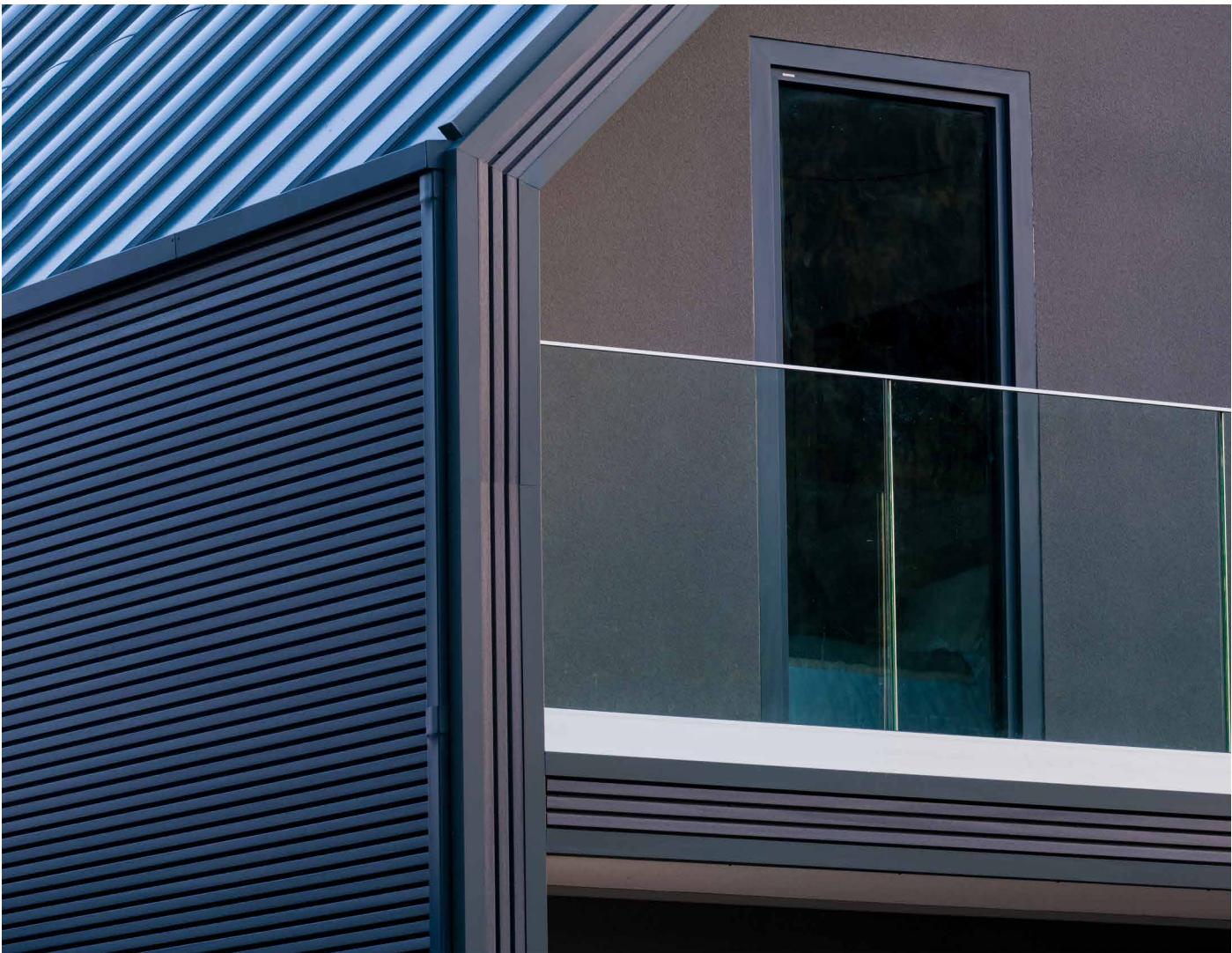
In this pursuit of excellence, Fiberdeck plays a key role, bringing its expertise in bio-based composite materials. The WEO® cladding from Fiberdeck®, used for the building's exterior, combines design, durability, and resistance, perfectly complementing Wunderhaus' sleek architecture.

LOCATED
ARCHITECT
PHOTOS
FEATURED PRODUCT

Est-Sussex, England
Nico Rensch
Leigh Simpson
WEO®35 - Dark Grey







Eiras

Private House

In this exceptional project in Portugal, the architecture focuses on the interaction between materials to create a uniquely designed villa. The WEO® composite cladding emerges as the key element of this composition, dressing the structure with natural elegance and a striking visual effect.

Installed in contrast with bold red raw concrete surfaces, the cladding adds a distinctive dynamism to the façade. Its finely structured relief captures light and shifts throughout the day, giving the house a vibrant and ever-changing dimension depending on the sunlight.

Beyond its aesthetic appeal, the WEO® cladding ensures resistance to harsh weather conditions and long-lasting color stability. A major asset for a villa designed to stand the test of time with both style and functionality.

LOCATED

DISTRIBUTOR

ARCHITECT

PHOTOS

FEATURED PRODUCT

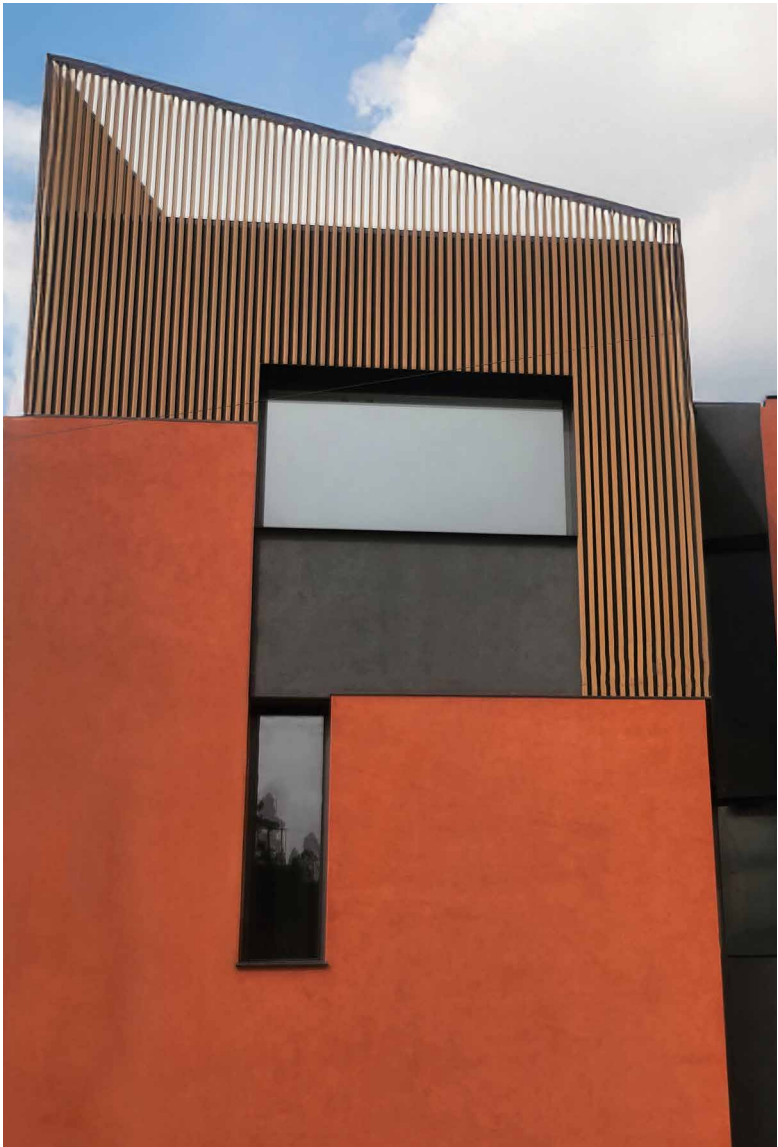
Coimbra, Portugal

Fiberwood

BIARQ

Vitor Maia

Brise Soleil & WEO® - Teak



Aroeira

Private House

This architectural achievement brilliantly illustrates the subtle alliance between modernity and elegance. Designed with remarkable attention to detail, the building's façade harmoniously combines WEO® composite cladding with aluminum elements, creating a striking interplay of textures and contrasts.

WEO® cladding, with its natural appearance and refined finish, brings a visual warmth that softens the rigidity of aluminum. This combination of materials gives the structure a unique dynamic, where the strength of metal interacts with the softness and authenticity of composite wood.

A project that proves architectural innovation also lies in the perfect balance of materials, offering a façade that is both modern, timeless, and high-performing.

LOCATED
DISTRIBUTOR
PHOTOS
FEATURED PRODUCT

Aroeira, Portugal
Fiberwood
Vitor Maia
WEO®35 - Teak



Silveira

Private house

In Portugal, this contemporary villa stands out with its bold architecture, where WEO® cladding fully covers the façade, creating a strong and original visual identity. This aesthetic choice gives the house a unique character, making composite wood the central element of the design.

Thanks to its structured relief and wood-inspired texture, WEO® cladding interacts with light, adding rhythm and depth to the façade. Both day and night, it enhances the villa's modern character with elegance and dimension.

LOCATED**DISTRIBUTOR****CONSTRUCTOR****PHOTOS****FEATURED PRODUCT**

Amoreira, Portugal

Fiberwood

Ribeirvalves Imobiliária

Vitor Maia

WEO®35 - Teak



Macieiras

Private House

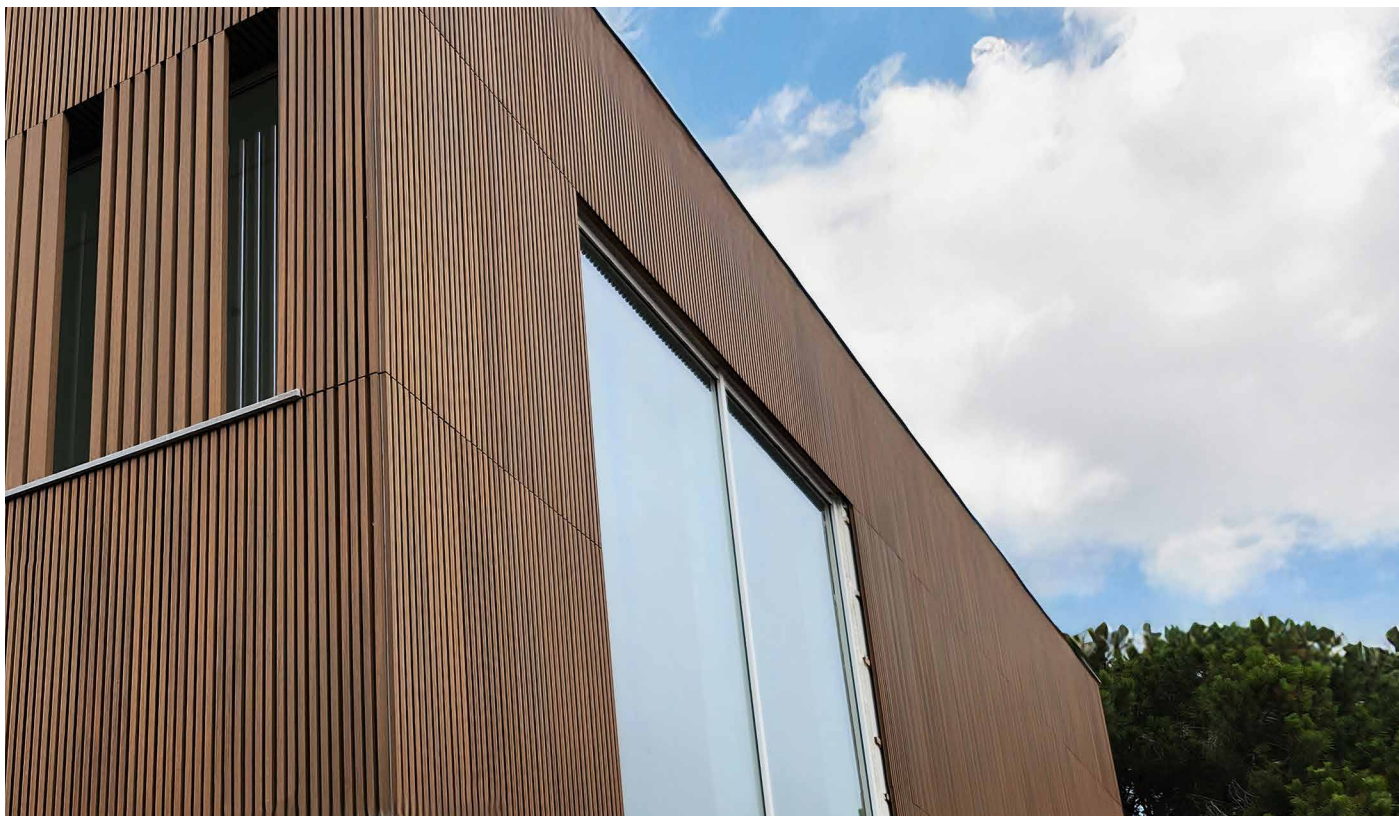
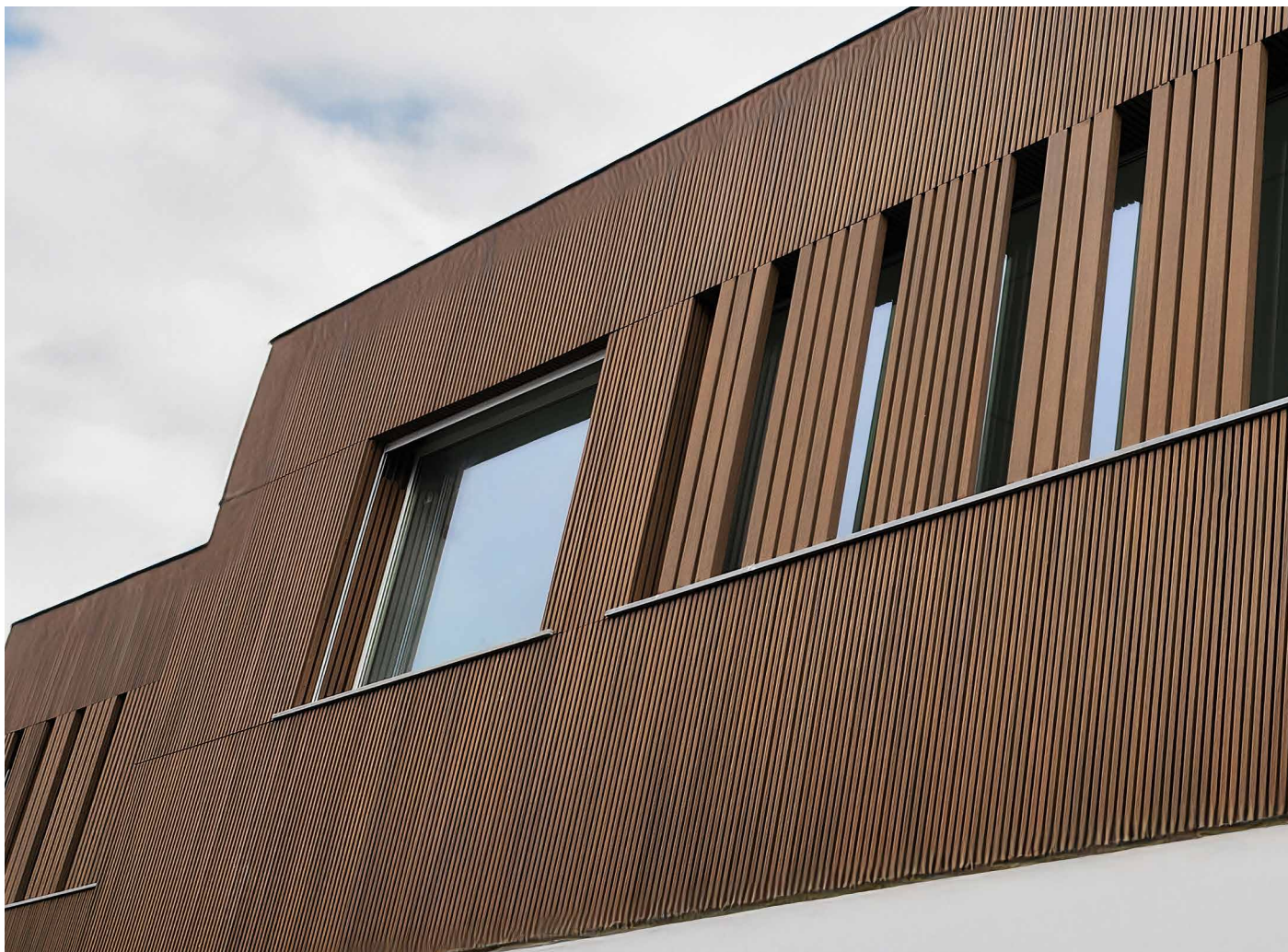
This exceptional villa stands out with its minimalist design, enhanced by the use of WEO® cladding. More than just a façade covering, it plays a key role in the project's aesthetics, adding a unique sense of depth and emphasizing the architectural volumes.

With its structured relief and authentic wood texture, WEO® cladding captures light and creates subtle shadow effects that evolve throughout the day. This dynamic visual interplay gives the villa character while reinforcing its contemporary elegance.

Perfectly integrated into its surroundings, this architectural choice combines modernity and warmth, delivering a façade that is both aesthetically striking and highly durable.

LOCATED
DISTRIBUTOR
PHOTOS
FEATURED PRODUCT

Cascais, Portugal
Fiberwood
Vitor Maia
WEO®35 - Teak



Morna Xpression

Private House

Located in a sunny region of Portugal, this high-end villa reinterprets the traditional codes of local architecture with a distinctly contemporary approach. By combining multiple materials, the architect has created a harmonious dialogue between past and modernity.

The use of WEO® cladding on the main façades gives the house a natural and timeless aesthetic while ensuring high resistance to demanding climatic conditions. Its integration with metallic elements and large glass surfaces enhances the architectural dynamism of the project, giving it a unique personality.

With this achievement, WEO® cladding once again proves its ability to transcend trends by offering an aesthetic and durable solution, perfectly suited to the demands of the most visionary architects.

LOCATED
DISTRIBUTOR
ARCHITECT
BUILDER
PHOTOS
FEATURED PRODUCT

Albufeira, Portugal
Fiberwood
Bruno Oliveira (Npoente Arquitectos)
Algarnor
Vitor Maia
WEO®35 - Teak & Brise Soleil - Teak







Zaurak

Residential Building

In Spain, at the heart of a bold architectural landscape, this spectacular building embodies a resolutely contemporary vision where innovation and aesthetics come together. Its futuristic design, characterized by strong lines and striking volumes, finds balance through the integration of WEO® composite cladding, which structures and enhances the entire project.

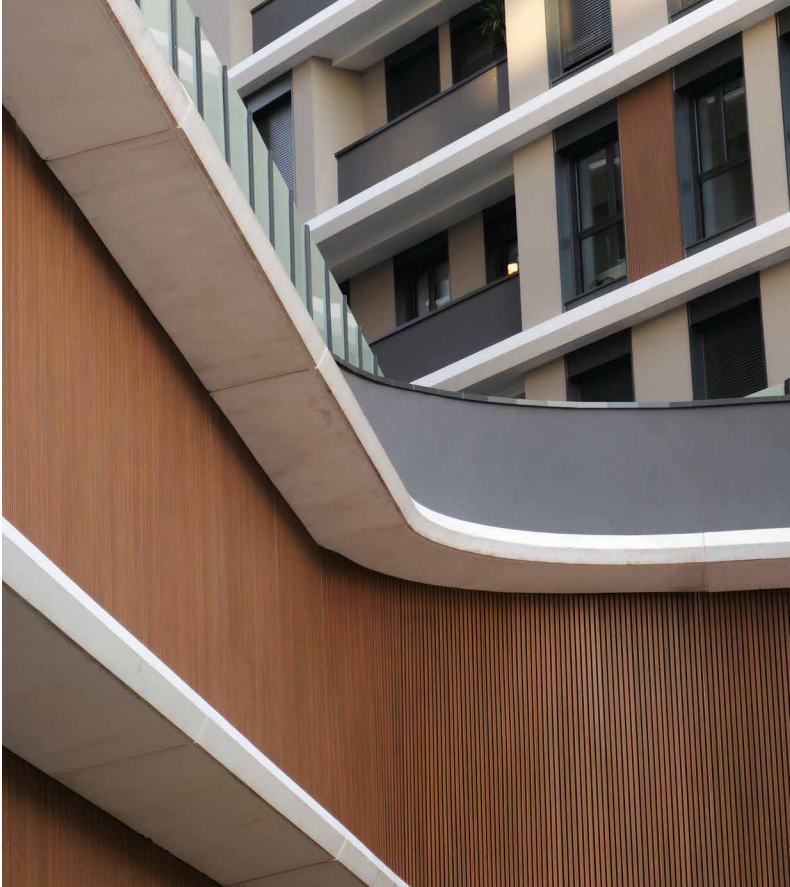
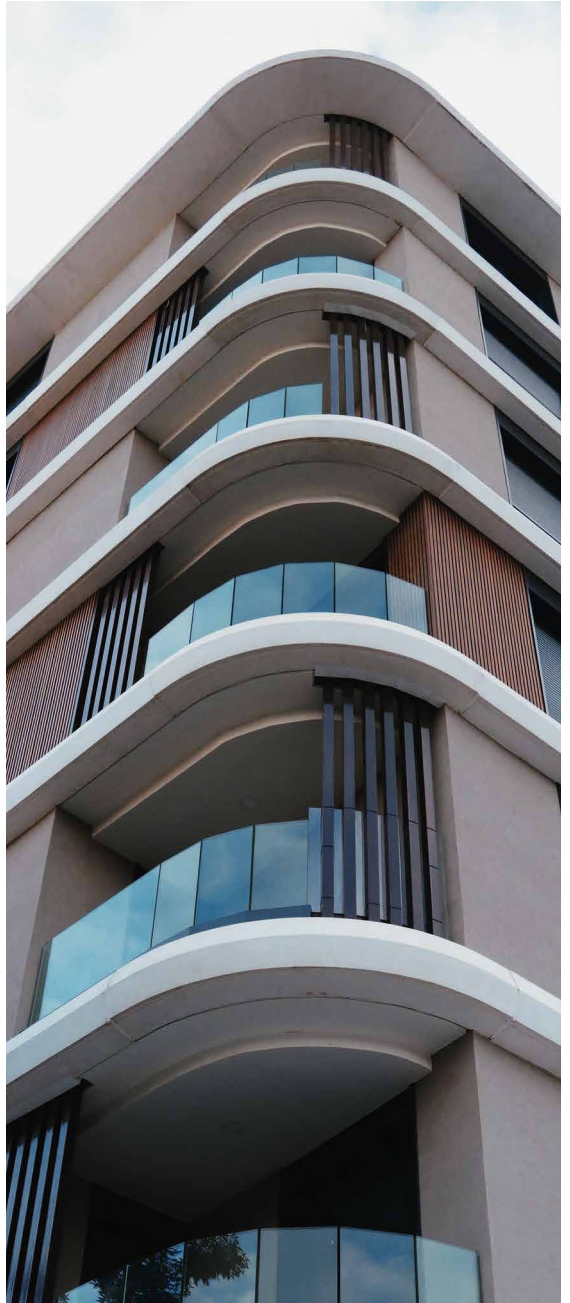
Chosen for its refined texture and ultra-matte finish, WEO® cladding plays a key role in this achievement by adding a unique visual depth to the façade. Its ability to capture light and create subtle shadow effects gives the building a dynamic and ever-changing appearance throughout the day.

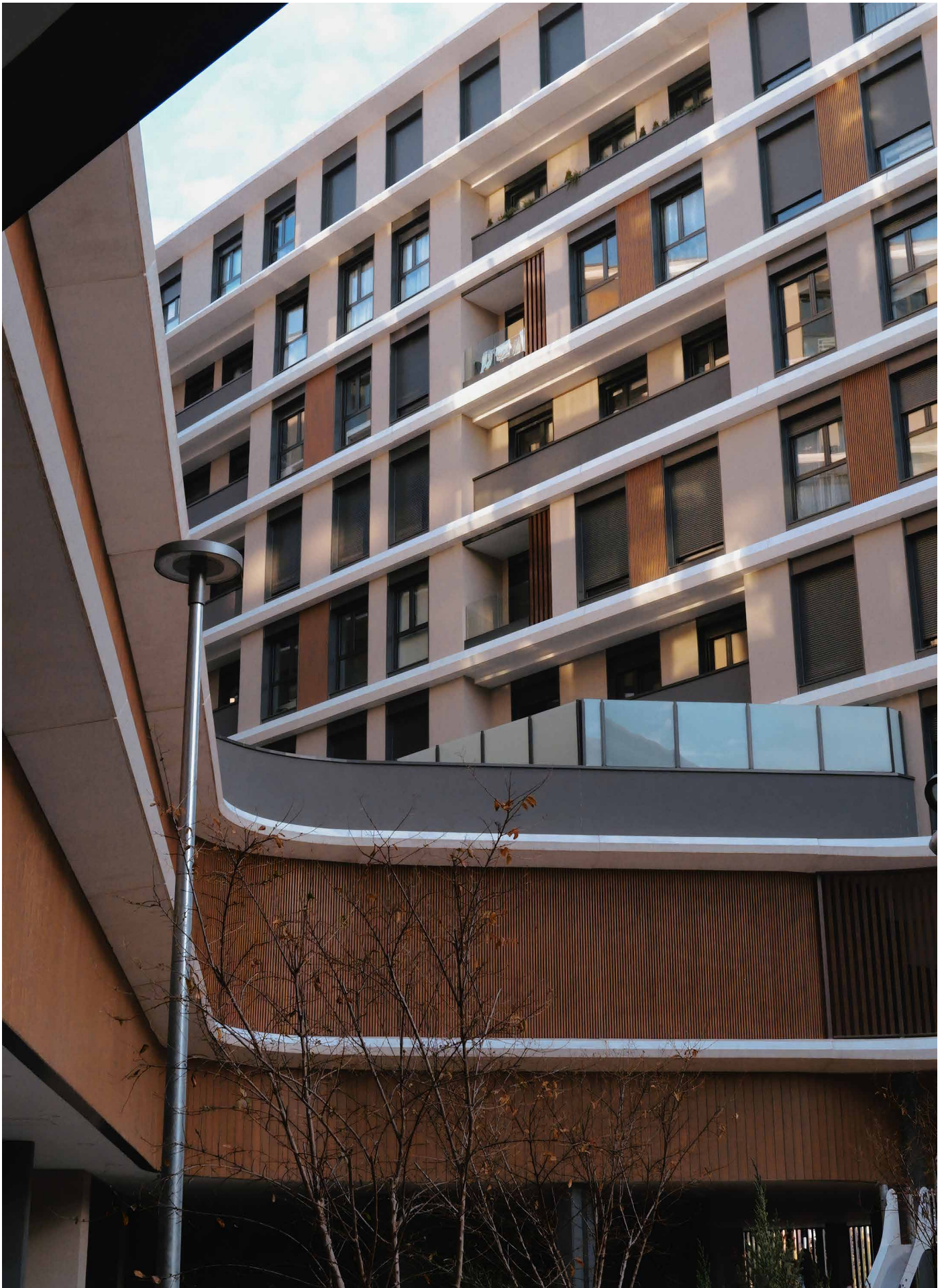
This project perfectly illustrates the architectural flexibility of WEO® cladding, capable of adapting to the most avant-garde designs while ensuring optimal durability. An essential reference for architects seeking aesthetic and high-performance solutions.

LOCATED
CUSTOMER
ARCHITECT
BUILDER
FEATURED PRODUCT

Madrid, Spain
Ibosa Group
Morph
Mundo Tarima SL
WEO®35 - Teak & WEO® Essential - Teak







Arteparc

Professionnal Building

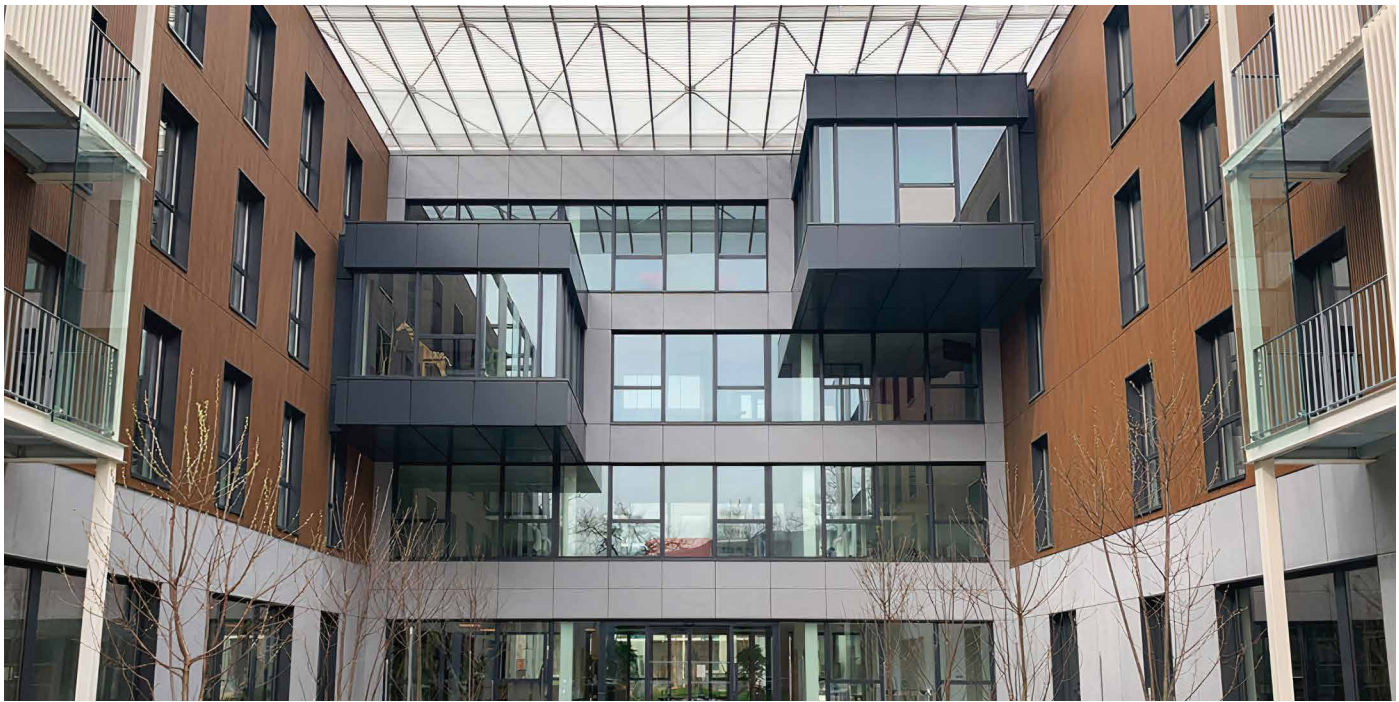
In France, this vast architectural complex stands out for its scale and its commitment to sustainable and aesthetic construction. Comprising multiple buildings with sleek and contemporary lines, Arteparc embodies a new generation of workspaces, where energy efficiency and landscape integration are at the heart of the project.

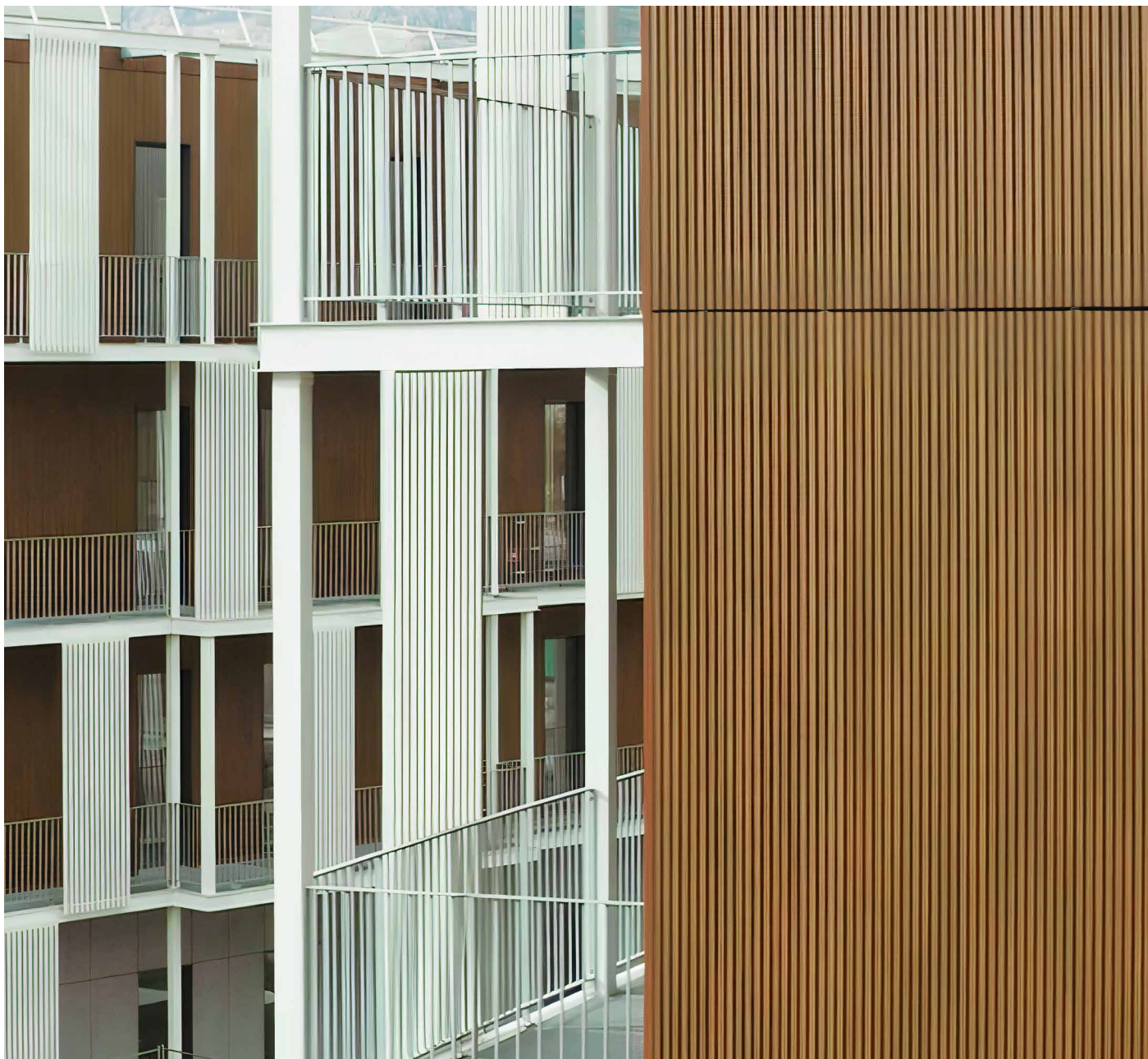
The WEO® cladding covers nearly all the façades, bringing a natural elegance and remarkable visual harmony to the entire complex. Its wood-like texture and flawless finish give each building a warm and inviting identity.

Beyond its refined aesthetics, WEO® cladding provides long-lasting protection against weather conditions, ensuring color stability and exceptional durability over time. An ideal solution for a project of this magnitude, where design, innovation, and environmental performance come together seamlessly.

LOCATED
CUSTOMER
ARCHITECT
BUILDER
FEATURED PRODUCT

Meylan, France
Artea Group
Agence VBI
Artea Group
WEO®35 - Teak







Oryx

Oasis Gas Station

Oryx Energies is one of the largest and oldest independent suppliers of energy products and services in Africa. The aim was to completely overhaul the image of its service stations.

Given the climatic conditions in Africa and, above all, Oryx's desire to opt for durable, low-maintenance materials, the choice was made in favour of our WEO® Fiberdeck® composite wood cladding boards.

The initial colour choice was teak, but following the completion of a first pilot station in Tanzania, Fiberdeck® developed a new lighter colour, close to the sandy Cedar colour, to better integrate the shops into the natural surroundings.

LOCATED

CUSTOMER

ARCHITECT

BUILDER

FEATURED PRODUCT

Tanzania, Africa

Oryx Energies

Minane Design Strategy - Saudade Portela

Oryx Energies

WEO®35 - Teak & Cedar



Jules Ferry

Nursery school

This extension project aimed to give the school a distinct identity, making it stand out in its urban environment. More than an expansion, it creates an inspiring space with unique materials and design.

A harmonious blend of wood and metal shapes the building, balancing modernity and warmth. WEO®35 cladding, used as wooden slats on the ground floor, forms a monolithic base while maintaining openings to the outside. This choice enhances the colorful, playful volumes of the upper floor, adding vibrancy to the overall design.

Each block is associated with a distinct color representing a classroom. The library, a key feature of the project, stands out with a polished mirror underside, reflecting its surroundings.

LOCATED**CUSTOMER****ARCHITECT****BUILDER****FEATURED PRODUCT**

Franconville, France

Commune de Franconville

Quatro Architecture

3IA, Euro Cerce, Gantha, Strangolino, B.T.F

WEO®35 - Teak



API

Catering building

API, a family-run business with over 1,800 restaurants chose WEO® composite cladding for the renovation of its buildings in Combs-la-Ville.

The architect skillfully combined materials to create a refined and modern aesthetic. Light colored brick, WEO® cladding, and aluminum joinery work together to give the façade both elegance and warmth. To enhance the design, two horizontal metal trim pieces were integrated into the WEO® cladding, adding a distinctive touch and creating an interesting visual rhythm.

Beyond aesthetics, WEO® cladding brings durability and a natural warmth to the mineral structure of the building, ensuring both performance and a contemporary architectural signature.

LOCATED
CUSTOMER
ARCHITECT
BUILDER
FEATURED PRODUCT

Combs la ville, France
API
Ir Architecte
Société A'Construct
WEO®35 - Teak





Never stop innovating

