

Terrazzo White



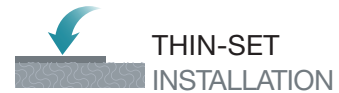
Porcelain Pavers

Terrazzo White porcelain pavers feature a bright off-white, crushed-limestone appearance. Use this artisanal look to beautify floors, pool decks, roof decks, patios, walkways, and other features throughout commercial and residential properties. Stunningly elegant, porcelain pavers are impressively durable, stain and frost resistant, and do not require sealing.

Tile Tech® hardscape systems provide architects and design professionals with a complete solution to transform any roof deck, walkway, driveway, courtyard, or patio into beautiful, useful spaces. Embracing USGBC LEED standards, our paving products boast a composition that includes 35% pre-consumer recycled materials. With no traces of Volatile Organic Compounds (VOC) and a Solar Reflectance Index (SRI) of ≥ 32 , porcelain pavers emerge as an eco-friendly choice that goes beyond conventional paving solutions.



VISIT OUR 3D MODELS FOR INSTALLATION TIPS!



Specifications

Available Sizes (Rectified)

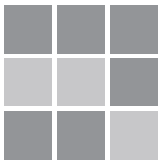


23-1/2" x 23-1/2"
597 x 597 mm



23-1/2" x 47-1/2"
597 x 1207 mm

Color and Shade Variation



V2
Slight Variation

USGBC LEED® Opportunities

Recycled Content:
MR Credit 4.1 and 4.2 (2 LEED pts.)

Low Emmitting Materials
EQ Credit 4.2 (1 LEED pt.)

Innovation in Design
ID Credit 1.1 - 1.4 (1-4 LEED pts.)

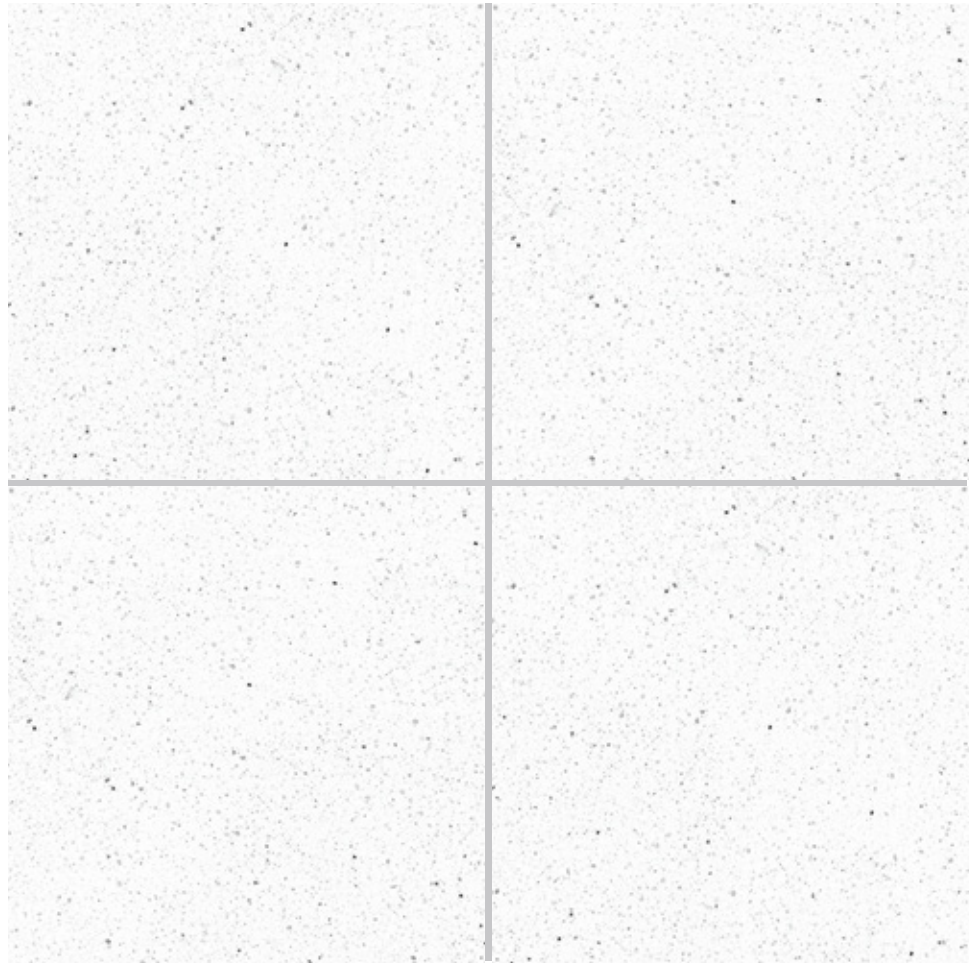
Heat Island Effect (Non-roof)
SS Credit 7.1 (1 LEED pt.)

Regional Materials (500 mi)
EQ Credit 4.2 (1 LEED pt.)

Shipping Details

Packaging (24" x 24")
72 pcs. | 279 Sq.Ft. | 2,700 lbs./pallet

Packaging (24" x 48")
32 pcs. | 256 Sq.Ft. | 2,350 lbs./pallet



Thickness:	3/4" 19 mm	
Weight:	9 lbs/Sq.Ft.	
Water Absorption:	Max. 0.05%	ISO10543-3
Static Load (Center)	≥1,840 lbf.	ASTM N/A, EN 12825
Bending Strength	3,300 lbs.	ASTM C-648, ISO 10545-4
Distribution Load	2,500 lbs.	ASTM N/A, EN 12825
Slip Resistant	R11	DIN51130
COF (Wet, Dry)	>0.60	ASTM C-1028-7, ISO N/A
Abrasion Resistant	Yes (Class 5)	ASTM C-1027, ISO 10545-6
Stain Resistant	Yes (Class 5)	ASTM C-1378, ISO 10545-14
Frost Resistant	Yes	ASTM C-1026, ISO 10545-12
Chemical Resistance	Yes	ASTM C-650, ISO 10545-13
Solar Reflectance (SRI)	50	
Rectified	Yes	

Full test reports and specification details available on our website.

