

Multicolor Stone


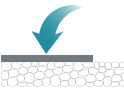




Porcelain Pavers

Our Multicolor Stone pavers are a modern take on a timeless rustic paver. Visually striking with accent streaks of rust color but without the maintenance required for natural stone, they are completely nonporous, will not stain, and requires no sealing.

Tile Tech® hardscape systems provide architects and design professionals with a complete solution to transform any roof deck, walkway, driveway, courtyard, or patio into beautiful, useful spaces. Embracing USGBC LEED standards, our paving products boast a composition that includes 35% pre-consumer recycled materials. With no traces of Volatile Organic Compounds (VOC) and a Solar Reflectance Index (SRI) of ≥ 32 , porcelain pavers emerge as an eco-friendly choice that goes beyond conventional paving solutions.



- 
**THIN-SET
INSTALLATION**
- 
**SAND & GRAVEL BASE
INSTALLATION**
- 
**RAISED PEDESTAL
INSTALLATION**
- 
**LOW PEDESTAL
INSTALLATION**

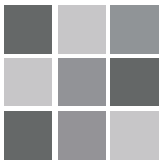
Specifications

Available Sizes (Rectified)

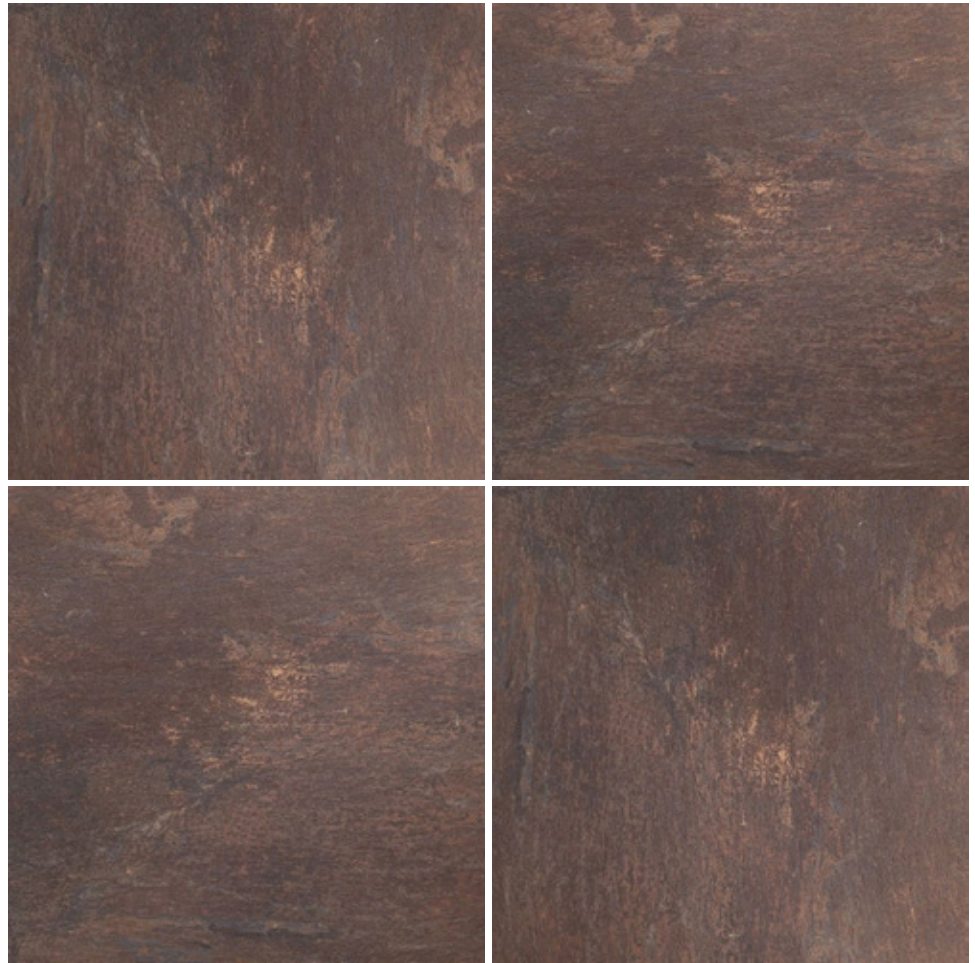


23-1/2" x 23-1/2"
597 x 597 mm

Color and Shade Variation



V4
Substantial variation



USGBC LEED® Opportunities

- Recycled Content:
MR Credit 4.1 and 4.2 (2 LEED pts.)
- Low Emmitting Materials
EQ Credit 4.2 (1 LEED pt.)
- Innovation in Design
ID Credit 1.1 - 1.4 (1-4 LEED pts.)
- Heat Island Effect (Non-roof)
SS Credit 7.1 (1 LEED pt.)
- Regional Materials (500 mi)
EQ Credit 4.2 (1 LEED pt.)

Shipping Details

Packaging (24" x 24")
72 pcs. | 279 Sq.Ft. | 2,700 lbs./pallet

Thickness:	3/4" 19 mm	
Weight:	9 lbs/Sq.Ft.	
Water Absorption:	Max. 0.05%	ISO10543-3
Static Load (Center)	≥1,840 lbf.	ASTM N/A, EN 12825
Bending Strength	3,300 lbs.	ASTM C-648, ISO 10545-4
Distribution Load	2,500 lbs.	ASTM N/A, EN 12825
Slip Resistant	R11	DIN51130
COF (Wet, Dry)	>0.60	ASTM C-1028-7, ISO N/A
Abrasion Resistant	Yes (Class 5)	ASTM C-1027, ISO 10545-6
Stain Resistant	Yes (Class 5)	ASTM C-1378, ISO 10545-14
Frost Resistant	Yes	ASTM C-1026, ISO 10545-12
Chemical Resistance	Yes	ASTM C-650, ISO 10545-13
Solar Reflectance (SRI)	50	
Rectified	Yes	

Full test reports and specification details available on our website.

