

SLOAN®

Full Line Sink Collection  
Smart. Sustainable. Stylish.



# Eye-catching and game-changing

Sinks are the most visible of the functional elements in a commercial restroom. Floors, walls and mirrors may set the tone, but sinks pull together the designer or architect's vision. Yet simply catching the eye isn't enough. Building managers and engineers have higher expectations than ever. How can a sink do more?



# A sink for every application

From high-end hotels to government buildings, sleek offices to hospitals, there's a Sloan sink design for every setting. The sinks you'll find on the following pages are the perfect complement to our faucets, soap dispensers, hand dryers, flushometers, water closets, urinals and more.



**AER-DEC®**  
Innovative design  
integrating faucet, soap  
dispenser and hand dryer



**Bio-Deck™**  
Made from renewable  
materials—functional  
and eco-friendly



**Designer Series™**  
Impeccable craftsmanship  
for upscale customization



**Stainless Steel**  
Hands-free stations for  
hygienic environments



**SloanStone®**  
Rugged and easy to  
maintain—perfect for high-  
traffic restrooms



**Vitreous China**  
Reliable and economical

## Sustainable, durable and customizable

**Sustainable:** Sustainable building isn't a trend. It's the baseline. All Sloan sinks are designed to take full advantage of our water-saving sensor faucets, and many are built with 100% recyclable materials.

**Durable:** Many Sloan sinks are IAPMO-certified, passing a complete battery of tests to prove they can stand up to any commercial application.

**Customizable:** Many Sloan sinks can be built with custom sizes, materials, colors and configurations. Use our online architectural worksheets to specify your ideal configuration.



*AER-DEC Integrated Sink AD-82000 in Designer White Corian® shown with LED lights and angled stainless steel enclosure.*

## The AER-DEC integrated sink

### **Soap, rinse, dry—all three steps, without taking any.**

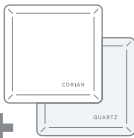
The ultimate innovation for any high-end washroom, the AER-DEC combines soap dispenser, faucet, hand dryer and sink basin into one beautiful, touch-free, hygienic, highly efficient system.

Visitors can now soap, rinse and dry their hands without reaching for paper towels or walking to a separate dryer—so your stylish restrooms stay neater and require less cleaning.

The AER-DEC combines the best ideas in commercial sinks into a single state-of-the-art installation. And it combines them in a sleek, contemporary design that looks as fantastic as it works—in any setting.

# Integrated to perfection

The AER-DEC® combines several of Sloan's most advanced components into the industry's state-of-the-art integrated sink, from soap to rinse to dry.

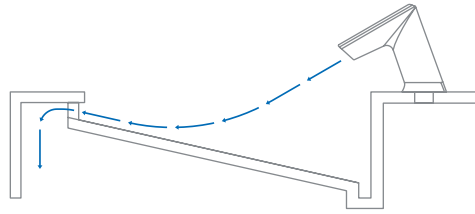


**100+**

**Choose from 100+ color options in Corian® or Quartz.**

There is no limit to the ways you can customize your AER-DEC sink.

*See pages 8-9 for more details.*



## **Sloan® Basin with Air Dam Technology**

The AER-DEC solves the updraft problem inherent to other sinks with integrated hand dryers. Our built-in patent-pending basin directs the airflow into air dam openings at the front of the sink, directing any backsplash away from the user.



## **Sloan® Touch-Free Soap Dispenser**

Active infrared sensing delivers a pre-measured application of soap to reduce waste, improve hygiene and eliminate soap drips on the sink deck.



## **BASYS® Sensor-Activated Faucet**

The bold lines of the BASYS sensor-activated faucet make a statement in any setting, and its range of power options makes it a model of sustainability.



## **Sloan® High-Speed Hand Dryer**

Power, innovation and conservation combine in a sleek design. With a pioneering sound suppression system and HEPA air filter, the Sloan hand dryer delivers quiet, clean air flow to complete the hygienic, touch-free handwashing experience.



*Designer Series Gradient Sink DSG-82000 in Linen Corian® shown with EFX-300 Faucet and angled brackets.*

## Designer Series sinks

### **Style without limits**

For upscale settings where your design needs to make a statement, Sloan's Designer Series offers an endless array of designs, colors, finishes and functionality.

As different as they may be in execution, all Designer Series sinks are visually striking, impeccably crafted and remarkably durable. They bring a clean and modern appeal to restrooms of any size in hotels, restaurants, office suites and high-end retail establishments.

All Designer Series sinks are available in Corian or quartz, with more than 100 color options to fit any design vision. After selecting a sink color, enhance that vision by pairing the design with any of Sloan's faucets and soap dispensers.

Pair your Designer Series Sink with Sloan faucets and matching soap dispensers. Select models available in special finishes.

# Make a statement

The Designer Series™ is all about customization, and it starts with shape. Bold, innovative shapes tell visitors they are not in just any restroom. If your contemporary designs push the boundaries of convention, you can customize a Designer Series sink to make your vision a reality.



## Choose from 100+ color options in Corian® or Quartz.

There is no limit to the ways you can customize your Designer Series Sink.

*For more options, see pages 8-9.*

---

### Gradient

DSG Series



- Available in 1, 2, 3 and 4+ stations
- Faucet and soap dispenser options available

*Shown with Combination ESD-501 (EFX-250 Faucet and ESD-500 Soap Dispenser)*

---

### Round Vessel

DSVR Series



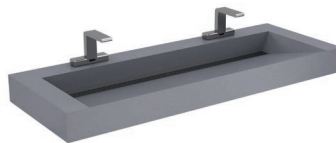
- Available in 1, 2, 3 and 4+ stations
- Faucet options available

*Shown with EAF-200 Faucet with extension*

---

### Weir Deck

DSWD Series



- Available in 1, 2, 3 and 4+ stations
- Faucet and soap dispenser options available

*Shown with EAF-900 Faucet*

---

### Open Front

DSOF Series



- Available in 1, 2, 3 and 4+ stations
- Faucet and soap dispenser options available

*Shown with Combination ESD-801 (ETF-80 Faucet and ESD-800 Soap Dispenser)*

---

### Counter Top

DSCT Series



- Available in 1, 2, 3 and 4+ stations
- Faucet and soap dispenser options available

*Shown with Combination ESD-601 (ETF-610 Faucet and ESD-600 Soap Dispenser)*

## Your vision. Your sinks.

We believe sinks should enhance your restroom design vision, not limit it. That's why you can customize the AER-DEC® and Designer Series™ sinks in unlimited ways, from size and configuration to material and color.

Visit [sloan.com/sinks](http://sloan.com/sinks) to discover online **architectural worksheets** that make customization simple. Just complete an architectural worksheet to specify your ideal design.

### Design your custom sink

From configuration to color, your customization options for **AER-DEC** and **Designer Series** sinks are limited only by your imagination.

You can specify custom widths, side and backsplashes, or various mounting options. You can include faucets, soap dispensers and (AER-DEC only) hand dryers that can be individual per station or be shared between stations. **LED lights within the basin** can even change color at the touch of a remote.

Choose from 100+ color options in Corian® or Quartz.



100+



*Designer Series Open Front Sink DSOF-82000 in Antarctica Corian shown with vertical cabinet style laminated doors, Combination ESD-501 (EFX-250 Faucet and ESD-500 Soap Dispenser) in Polished Brass, paper towel holder and trash hole.*

### Customization options



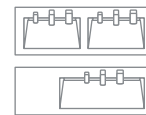
#### Materials and colors

- Quartz in more than 100 colors
- Solid-surface Corian in more than 100 colors



#### Standard or custom widths

- Standard widths of 30", 60", 90" or 120"
- Customize the width to suit your restroom's dimensions



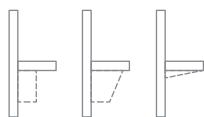
#### Configuration options

- Basins can be centered or offset
- Continuous trough or individual basins





*AER-DEC® Integrated Sink AD-82000 in Glacier White Corian® shown with beveled sink edge, vertical cabinet style laminated doors and bag hook.*



**Mounting options**

- Angle brackets
- Angled stainless steel enclosure
- Vertical stainless steel enclosure
- Vertical cabinet style laminated doors



**Specialty options**

- Finishes for faucets, soap dispensers and (AER-DEC only) hand dryers
- LED lights
- Edge (beveled or round)
- Trash hole
- Bag hooks
- Faucet engraving of logo
- Paper towel holder
- Two-tone sink
- Baby changing station



*SloanStone Waterfall Sink ELWF-82000 in Matrix Light Gray SloanStone shown with EAF-250 Faucet and ESD-2000 Soap Dispenser in Brushed Stainless with angle brackets.*

## SloanStone sinks

### Low-maintenance sinks for high-traffic settings

Schools. Office buildings. Airports. Stadiums. Wherever lots of people get together, restrooms have to be ultra-rugged and easy to maintain.

The SloanStone sink system uses a molded, non-porous solid surface material that eliminates all adhesives and sealants for tough durability and easy repairs.

SloanStone sinks are built with these features:

- **Easy-access components.** All serviceable components, including electronics, can be easily accessed. Some models can even be accessed above deck.
- **Vandal resistance.** Each design provides a level of vandal resistance, from easily cleaned surfaces to integrated faucets and locked access to components.

Pair many SloanStone Sinks with Sloan faucets and soap dispensers. Select models available in special finishes.

See all fourteen different designs and up to 25 color options at [sloan.com/sloanstone](http://sloan.com/sloanstone).

---

## Round Front

ELRF Series **NEW**



- Available in 1, 2, 3 and 4 stations
- Faucet and soap dispenser options available

*Shown with ESD-1501 Combination (EAF-150 Faucet and ESD-1500 Soap Dispenser)*

---

## Arrowhead

ELA Series **NEW**



- Available in 1, 2, 3 and 4 stations
- Faucet and soap dispenser options available

*Shown with Combination ESD-501 (EFX-250 Faucet and ESD-500 Soap Dispenser)*

---

## Waterfall

ELWF Series **NEW**



- Available in 2, 3 and 4 stations
- Faucet and soap dispenser options available

*Shown with Combination ESD-2001 (EAF-275 Faucet and ESD-2000 Soap Dispenser)*

---

## Gradient

ELGR Series



- Available in 1, 2, 3 and 4 stations
- Faucet and soap dispenser options available

*Shown with EAF-350 Faucet and ESD-600 Soap Dispenser*

---

## Electronic Lavatory Countertop

ELC 80000 Series



- Available in 1, 2 and 3 stations
  - Faucet options available
- Shown with EAF-200 Faucet*

ELC 40000/70000 Series



- Available in 1, 2, 3 and 4 stations
- Faucet and soap dispenser options available

*ELC-40000 shown with ESD-1501 Combination (EAF-150 Faucet and ESD-1500 Soap Dispenser)*

---

## Electronic Washstation

EW 40000, 60000, 70000 Series



- Available in 2 and 3 stations
- Integrated soap dispenser option available

*EW-60000 shown with integrated faucet and soap dispenser*

---

## Electronic Lavatory System

ELS 40000, 60000, 70000 Series



- Available in 1, 2 and 3 stations
- Faucet and soap dispenser options available

*ELS-70000 shown with Combination ESD-2101 (SF-2150 Faucet and ESD-2100 Soap Dispenser)*

---

## Electronic Washstation Fountain

EWF Series



- Available in 2, 3 and 4 stations
- Integrated soap dispenser option available

*Shown with integrated faucet*



*Vitreous China Round Vessel Lavatory SS-3036 shown with EFX-800 Wall-mounted Faucet.*

## Promoting hygiene with functional elegance

Sloan vitreous china sinks are available for wall-hung or countertop installation. They are perfect for any application—from executive washrooms to schools, entertainment venues, transportation centers or government buildings.

Options include a backsplash, wheelchair access and 4", 8" or single-hole centerset punching. You can also add a ceramic shroud under the sink (select models) for a sleek, clean appearance.

All models are IAPMO tested and certified. Add our revolutionary SloanTec® Glaze to your sink to help keep it clean and looking great.

Pair your Vitreous China Sink with a Sloan faucet and (for 20" × 18" ledgeback or undermount lavatories only) matching soap dispenser.

---

## Wall-hung lavatories

Ledgeback NEW  
20" × 18" | 508 mm × 463 mm



**SS-3106\*** Single Hole  
**SS-3006\*** 4" Centerset  
**SS-3806** 8" Centerset  
Optional SS-27-A Shroud available  
\*LH & RH Soap Holes also

Ledgeback  
21" × 20" | 533 mm × 508 mm



**SS-3165** Single Hole  
**SS-3065** 4" Centerset  
Optional SS-27-A Shroud available

With 4" backsplash  
20" × 18" | 508 mm × 457 mm



**SS-3103** Single Hole  
**SS-3003** 4" Centerset  
**SS-3803** 8" Centerset

ADA wheelchair  
27" × 20" | 686 mm × 508 mm



**SS-3104** Single Hole  
**SS-3004** 4" Centerset  
**SS-3804** 8" Centerset

---

## Wall-hung lavatories

Corner  
22" × 17" | 559 mm × 432 mm



**SS-3145** Single Hole

---

## Vessel lavatories

Round  
Diameter 17" | 432 mm



**SS-3036** Round

Square  
19" × 19" | 483 mm × 483 mm



**SS-3026** Square Single Hole

---

## Undermount lavatories

20" × 18" | 508 mm × 457 mm



**SS-3001**

22" × 16" | 559 mm × 406 mm



**SS-3021**

---

## Drop-in lavatories

20" × 17" | 508 mm × 432 mm



**SS-3802** 8" Centerset



*Deluxe Stainless Steel ESS-3300 Sink shown with integrated gooseneck surgical bend faucet and knee activated soap dispenser.*

## Uncompromising options

Sloan hands-free **stainless steel handwashing and scrub sinks** are ideal for healthcare applications when you need the highest level of handwashing hygiene.

Sloan's **scrub sink** features front-of-sink sensors designed to maintain faucet flow while a surgical scrub is performed as well as knee-activated soap dispensers for ease of use.

Sloan **Bio-Deck™ sinks** are made from ground corncobs and other bio-based materials instead of petroleum-based substances, but they're durable enough for any commercial restroom setting.

Pair select stainless steel and all Bio-Deck sinks with Sloan faucets and matching soap dispensers.

# Stainless steel sinks

## Hygienic, touch-free and tough

Built from 14 gauge type 304 stainless steel, these sinks endure the harshest working environments with minimal maintenance. And for ultimate hygiene, touch-free faucets and soap dispensers combine with a sink design that's ideal for complete washdowns.

Our stainless sink systems also include:

- Pre-plumbing and pre-assembly for easy installation
- Lift-out front panels for easy maintenance
- Sound-softening inside panels

Sloan stainless sink systems are available in 1, 2 and 3 station configurations to accommodate every setting.



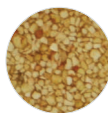
# Bio-Deck™ sinks

## Eco-friendly and naturally functional

Make a statement with style! Pair Bio-Deck sinks with Sloan sensor-activated faucets for the ultimate in sustainable sink solutions—ideal for places where it's important to promote environmentally conscious commercial construction.



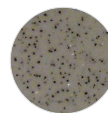
These sinks are available in 1 and 2 station configurations, in four natural colors:



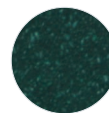
Corn  
Cob



Rustic  
Maple



Grey



Jade  
Green

# SLOAN®

Water Connects Us®

## World Headquarters

10500 Seymour Avenue  
Franklin Park, IL 60131  
U.S.A.

sloan.com  
800.982.5839

[f/sloanvalvecompany](https://www.facebook.com/sloanvalvecompany) [@sloan\\_valve](https://twitter.com/sloan_valve) [@sloan\\_valve](https://www.instagram.com/sloan_valve) [/sloan\\_valve](https://www.pinterest.com/sloan_valve)

*On the cover and below: AER-DEC® Integrated Sink  
AD-84000 in Calacatta Natura Corian® Quartz with angled  
stainless steel enclosure.*

