

Stainless Steel & Glass Hardware Collection

COMMERCIAL EDITION



style design innovation

Established in 1995, Euro Architectural Components (EAC) - a division of Richelieu Hardware Canada Ltd. - stands as a **LEADING RAILING SUPPLIER IN CANADA**, distinguished by our unwavering commitment to Style, Design, and Innovation. Catering to the Railing, Fence, and Glass industries, we deliver a comprehensive range of products marked by excellence at competitive prices.

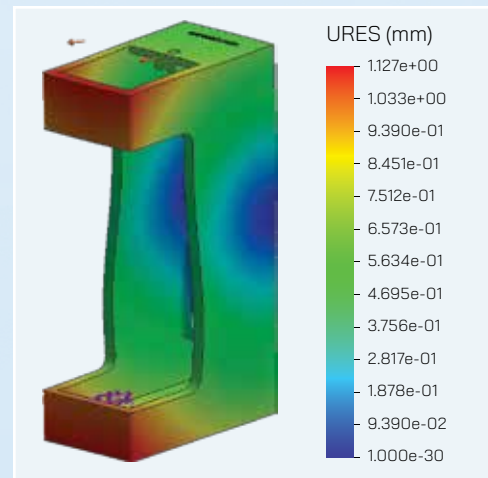
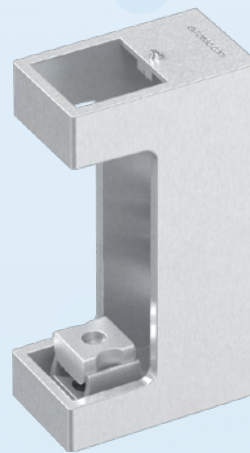
Many years of experience in the architectural industry drives our desire to craft innovative products. We prioritize product development, continuously striving to pioneer innovative designs and enhance the functionality of our extensive product lines. With a steadfast dedication to quality assurance, we ensure that each offering meets the highest standards of craftsmanship and durability, thanks to our in-house team of engineers.

Simplicity, quality, and timeless design are the key features that our engineering team aims for during product development by using the latest state-of-the-art CAD/CAE programs and equipment such as 3D printers. Our goal is to develop and innovate every product meticulously, ensuring that the final product meets or exceeds standard strength requirements while taking into consideration aesthetics and ease of installation. Our in-house testing and certification procedure helps ensure that new products undergoing integrated developing stages comply with national and provincial building codes.

We proudly provide comprehensive technical and engineering documentation, including BIM files, Auto CAD blocks and CSI 3-part specification, for all our commercial-grade systems. You can conveniently access these resources either directly through our website or via BIMOBJECTS, ensuring effortless accessibility for your convenience.

For technical questions or for details about custom product development and to inquire about sourcing your exclusive design, please contact

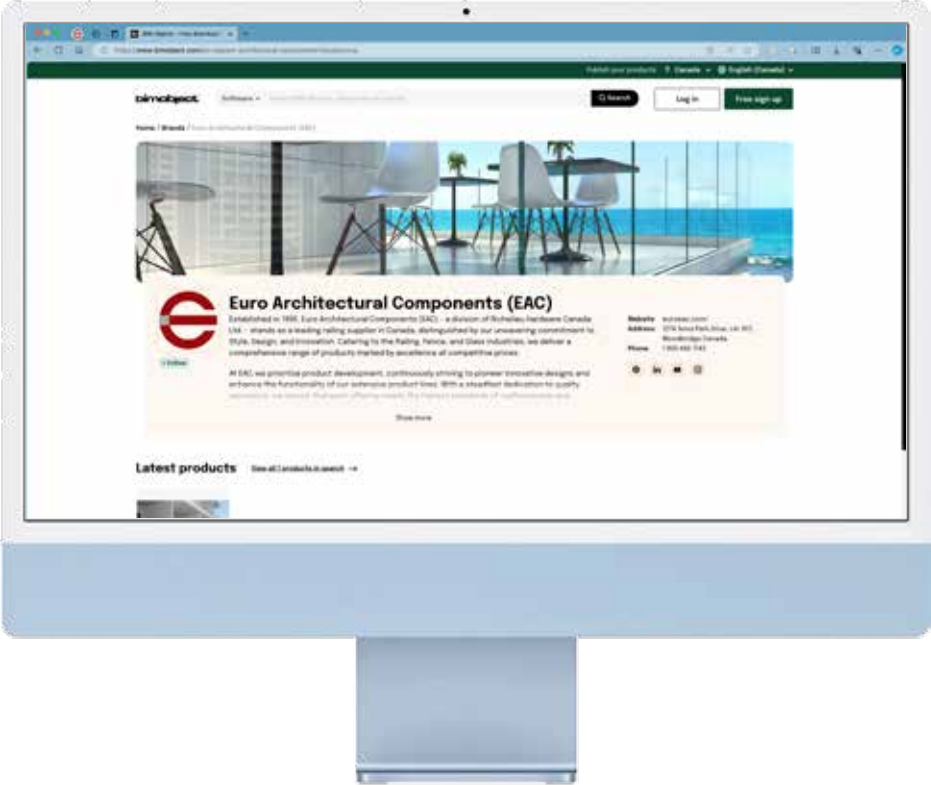
engineering@euroeac.com



3D Revit, CAD, and Technical Files NOW AVAILABLE ON



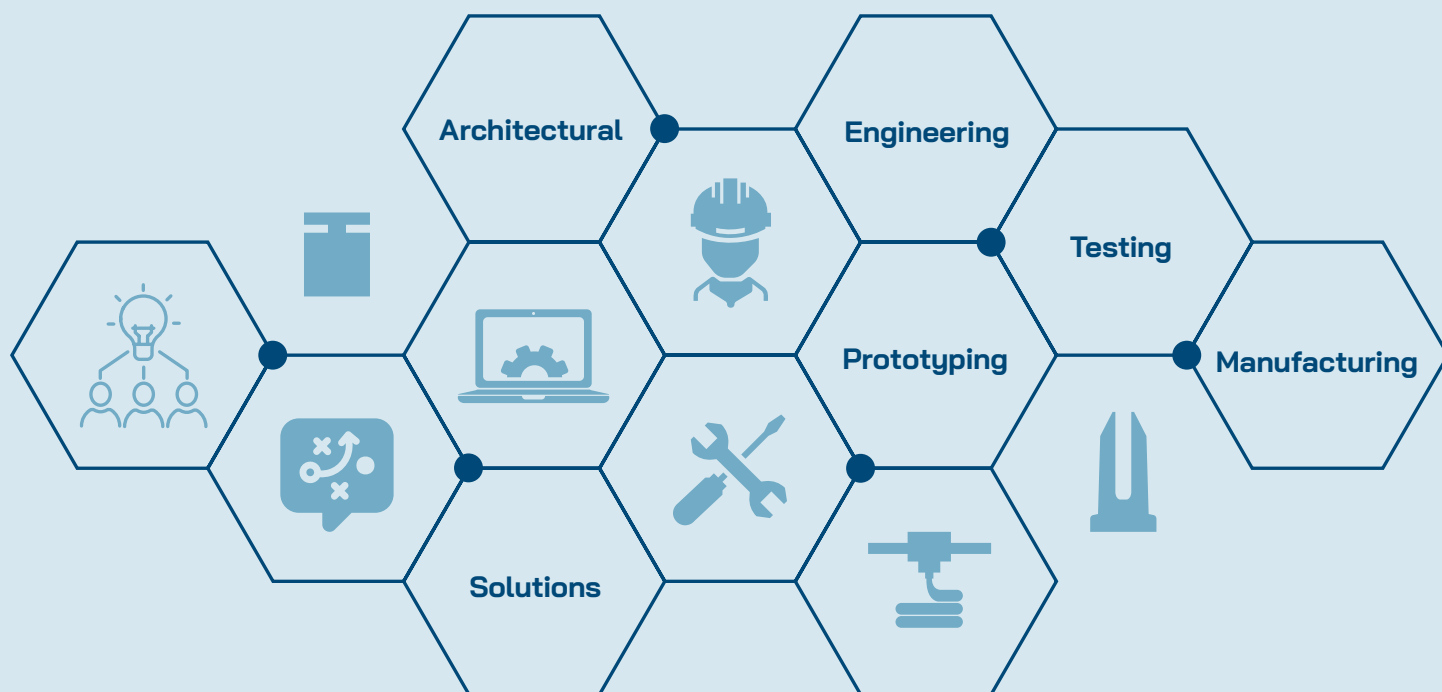
Effortlessly access complete system specifications, saving you valuable time in selecting the right products for your project.



Visit us on bimobjects



Custom Architectural Products Development Services



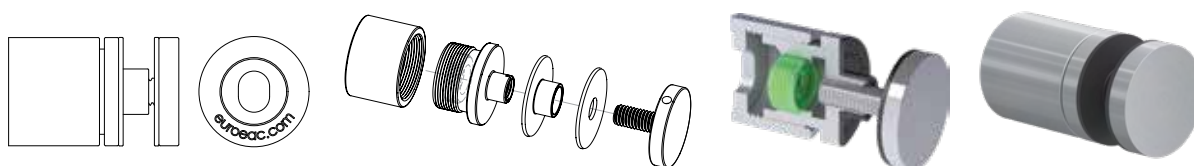
Bring your ideas to life

Our team of highly skilled engineers at **EURO ARCHITECTURAL COMPONENTS**, are ready to collaborate with you to help turn your designs into reality. We provide product development services for exclusive custom architectural products from ideation all the way through to final testing, certification, and manufacturing.

More than 25 years in the architectural components industry has allowed us to develop the experience and expertise needed to be able to guide you through every step of the way, with confidence.

Bring your ideas to life today by contacting us at engineering@euroeac.com.

The **Tilt-Lock T3 Standoff** is an example of one of our custom designed engineered products.



Scan to view all of our custom designed products

TILT-LOCK™ Base Shoes

2



Glass Railing Tops

18



Posts

8



Handrail Profiles & Brackets

24



Standoffs

12



Glass Wall Channels & Kits

32





TILT-LOCK™ Base Shoe



TILT-LOCK™ Base Shoes





Our **Ready-to-Install TILT-LOCK™** Adjustable Base Shoes are available in **4 Commercial Models: M4, M5, M6L, and M6Y**, accommodating Glass sizes from **12-26.52mm**.



TOP MOUNT



RECESSED



SIDE MOUNT

Our patented technology allows a **2°** front and back tilt of the Glass within the Shoe, giving you faster and easier installation with exact alignment every time. This is all achievable from one side, making your projects more efficient.

TILT-LOCK™ Adjustable Base Shoes are **Ready-to-Install** with pre-drilled holes and fully concealed components, offering a clean, finished, and perfectly aligned look. Additional accessories are available.

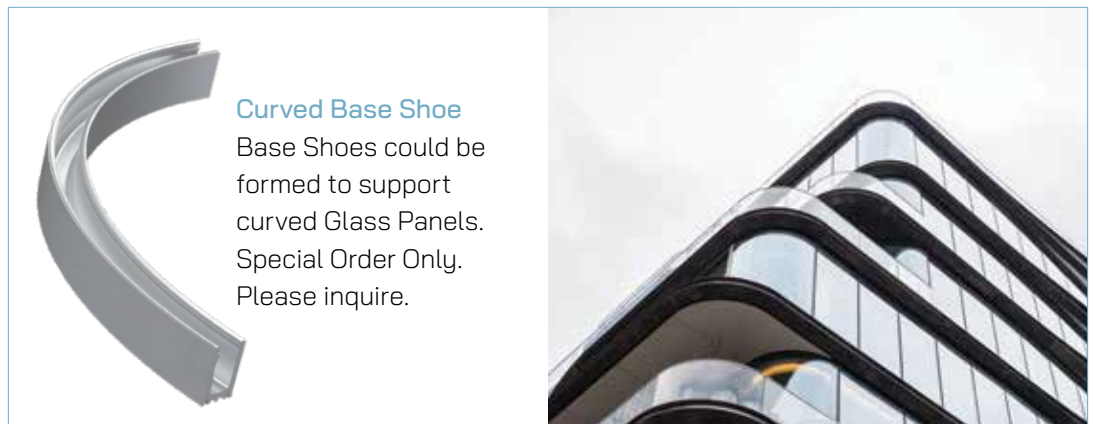
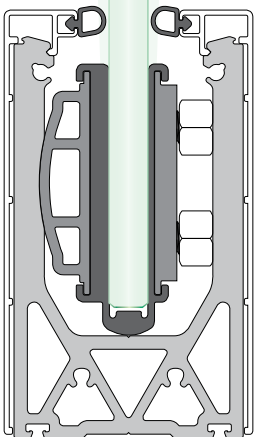
Features



Engineered for the National Building Code of Canada.



Patented in Canada, the U.S., the U.K., Europe, Australia, New Zealand, and China.



Curved Base Shoe
Base Shoes could be formed to support curved Glass Panels. Special Order Only. Please inquire.

TILT-LOCK™ Base Shoe Specifications

Base Shoe Material:

Alkaline Anodized Aluminum 6063-T6.

Aluminum Cladding:

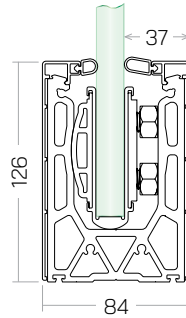
Satin Anodized Aluminum 6463-T5 with attached Gaskets and matching End Caps.

Stainless Steel Cladding:

Stainless Steel 316L in Satin finish and small Aluminum Clip-on Channel with attached Gaskets and matching End Caps.



M4



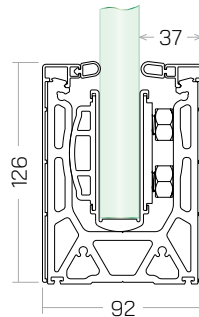
Features:

- Top Mount
- Side Mount
- Recessed
- 10ft length (custom sizes available)
- 20 pre-drilled holes at 6" apart



More Information

M5



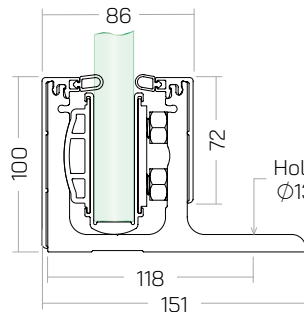
Features:

- Top Mount
- Side Mount
- Recessed
- 10ft length (custom sizes available)
- 20 pre-drilled holes at 6" apart



More Information

M6L



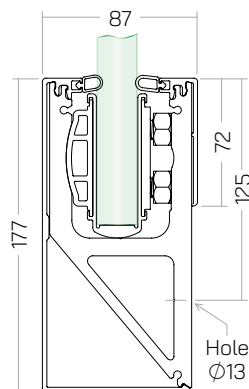
Features:

- Top Mount
- 10ft length (custom sizes available)
- 20 pre-drilled customizable holes at 6" apart



More Information

M6Y



Features:

- Side Mount
- 10ft length (custom sizes available)
- 20 pre-drilled customizable holes at 6" apart



More Information



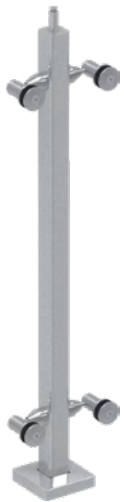
Posts



Posts

- Engineered for Interior and Exterior applications.
- Material is **4.8mm thick Tube** in SS316 Satin finish.
- Fully welded End Cap with Tube Support Adjustable by a max. of ± 10 mm.
- 3/8"-16 Tapped Holes on Posts suit a variety of Fittings to secure Glass Panels.
- End, Line, and Corner Posts are 1054mm high designed for **Landing** applications 1070mm (42 1/8") high with handrail.
Included with End, Line, and Corner Posts:
 - Fixed Tube Support at the top.
 - Fully welded 12mm thick solid cast Stainless Steel Base Plate and Snap-fit Plate Cover at the bottom.
- Blank Posts are 1420mm high designed for **Stairway** applications.
Included with Blank Posts:
 - Swivel Tube Support at the top.

Square Post System



S1 Series
Double
Arm Glass
Connectors



S2 Series
Straight
Posts
Spiders



S3 Series
Glass
Clips



Round Post System



R1 Series
Double
Arm Glass
Connectors



R2 Series
Straight
Posts
Spiders



R3 Series
Glass
Clips





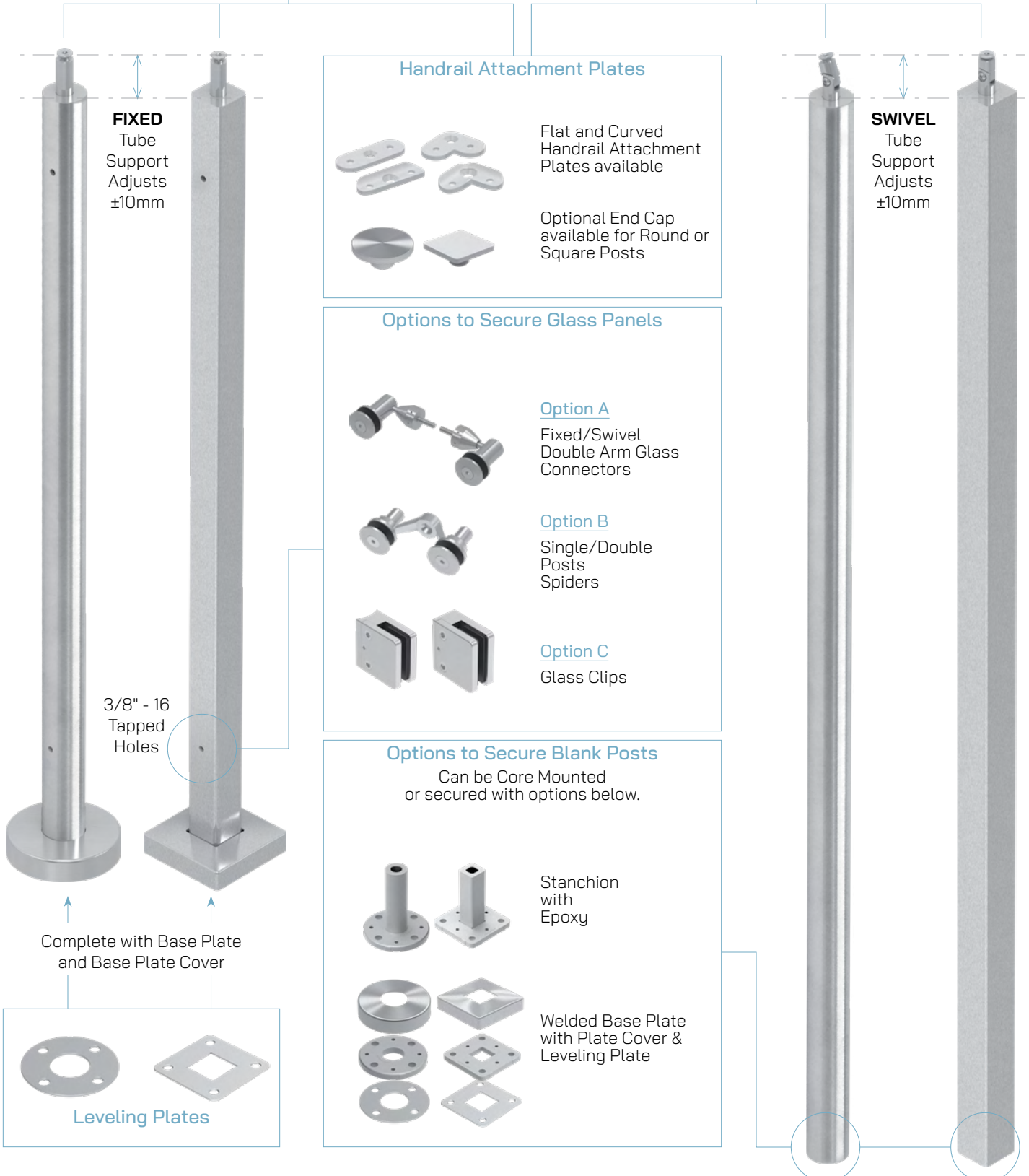
Build Your Own Post

Landing Posts with Welded Bases

Designed for End, Line, and Corner Post configurations.

Blank Posts

Designed for Stair and Core Mount installations.







Standoffs

TILT-LOCK™ T3 Lockable & Adjustable Glass Standoffs

Our **Tilt-Lock™** Adjustable Glass Standoffs allow easy and precise vertical alignment of glass panels. After the glass panel is set in place, it can be vertically aligned from the front using our Adjustable Standoff Tool by tightening or loosening the Telescope portion of the standoff.

Our **Tilt-Lock™** Adjustable Glass Standoffs are available in 1 1/2" and 2" diameters in various lengths. All sizes are available in **Satin (S)**, with some sizes also available in **Powder Coated Satin Black (B)**, **PVD Brushed Graphite Black (GB)**, **PVD Matte Black (MB)**, and **PVD Brushed Gold (G)** finishes. These standoffs feature an internal locking mechanism with a clean design that conceals the threads in the spacer.

- **NEW** increased range of glass sizes from 3/8" - 7/8", suitable for commercial and residential projects.
- **Locking System** secures standoff in adjusted position, preventing misalignment once the cap is assembled or disassembled.
- **Adjustability** enables a tilt range of **+/-3°** for glass railings, while our **T3** slotted model's slot hole offers both vertical and horizontal adjustment, allowing for complete **3D adjustability**.
- **Duplex 2205** Ultra Marine Grade Stainless Steel, solid material.
- **Designed by EURO** and fully engineered for the National Building Code of Canada.
- Cap and Threaded Rod come as one cast piece for superior strength.
- **Patented in Canada (313 8408), and U.S. (118 41043).**



Standard Glass Standoffs

Our popular **Standard** Glass Standoffs are made of high-quality 316-Grade Stainless Steel and are available Round or Square to suit your design needs.

- Includes Imperial Thread and is available in 3 finishes: **Satin**, **PVD Brushed Graphite Black**, and SS304 **Powder Coated Satin Black**.
- The Spacer design has a short lip to provide a smooth surface for Glass to be held in place for installation.
- Imperial Fastening options are available. For Threaded Rods and Hanger Bolts, use the same Thread size as the Spacer.





Adjustable Standoff Tool

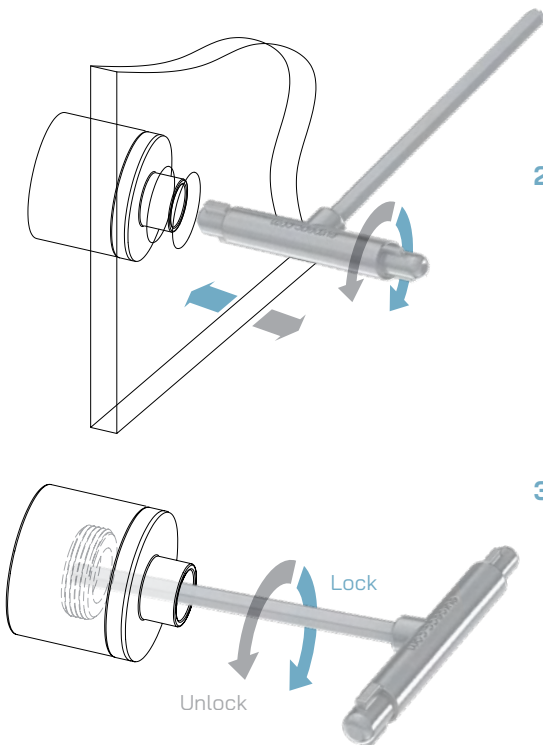
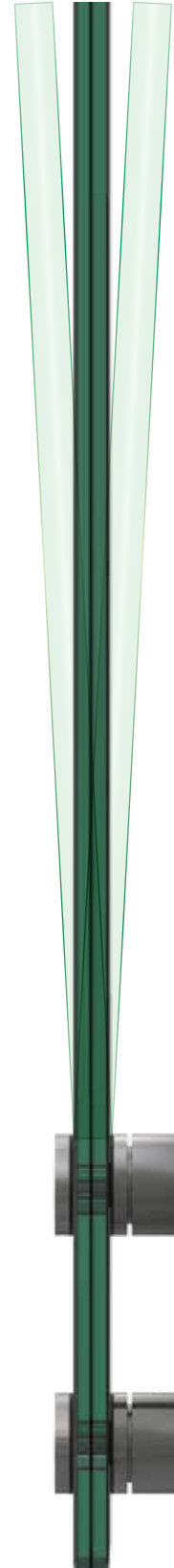
SSJT1 - Required for T3 Slotted Standoffs

This Tool is designed by EURO to facilitate adjustments of our Adjustable Glass Standoffs. The 2 rounded ends are for adjusting 1 1/2" and 2" diameters respectively. The Allen key is used to lock and secure the standoffs in place. Sold Separately.



3D Adjustability (T3 models only)

1. Adjust horizontally side to side and vertically up and down.
2. Adjust forward or backward to allow a $\pm 3^\circ$ adjustment
3. Lock into place. This tool can also be used to lock our T3T Tapped model.

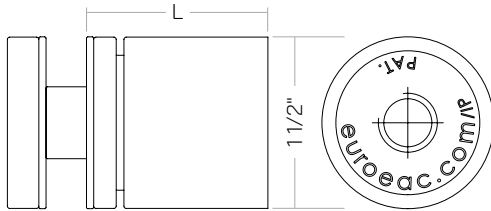


More standoffs online



T3 installation video

Please direct questions to engineering@euroeac.com



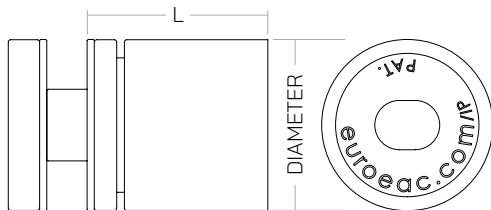
T3T Lockable Tapped Round



1 1/2" Diameter

Recommended: 3/4" Glass Hole size • 1/2" Fastener.

PART #	L (Length Min - Max)	Glass Thickness	Available Finish
SSJ112112T	1 1/2" - 1 3/4"	10 - 16mm	S, B
SSJ1122T	2" - 2 3/8"	10 - 16mm	S, B



T3 Lockable Slotted Round



1 1/2" Diameter

Recommended: 3/4" Glass Hole size • M10 or 3/8" Fastener.

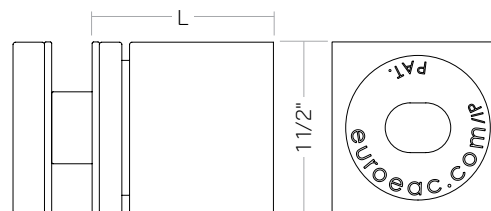
PART #	L (Length Min - Max)	Glass Thickness	Available Finish
SSJ112114	1 1/4" - 1 1/2"	10 - 16mm	S
SSJ112112	1 1/2" - 1 3/4"	10 - 16mm	S, B, GB, MB, G
SSJ1122	2" - 2 3/8"	10 - 16mm	S, B, GB, MB



2" Diameter

Recommended: 1" Glass Hole size • M12 or 1/2" Fastener.

PART #	L (Length Min - Max)	Glass Thickness	Available Finish
SSJ2112	1 1/2" - 1 3/4"	12 - 19mm	S, B, GB, G
SSJ22	2" - 2 3/8"	12 - 22mm	S, B, GB



T3 Lockable Slotted Square

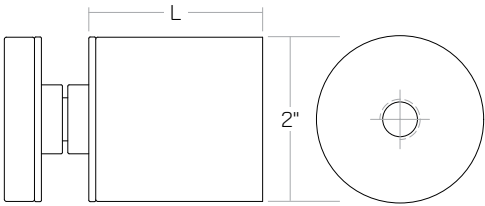
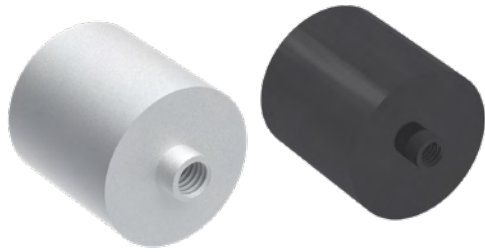
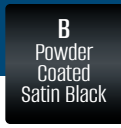


1 1/2" Diameter

Recommended: 3/4" Glass Hole size • M10 or 3/8" Fastener.

PART #	L (Length Min - Max)	Glass Thickness	Available Finish
SSJQ112	1 1/2" - 1 3/4"	10 - 16mm	S, B, GB, G





Standard Round Standoffs

2" Diameter Spacers with 3/8" Thread

Recommended: 3/4" Glass Hole size • 3/8" Fastener.

PART #	L (Length)	Stainless Steel Grade	Available Finish
SSK2126	1/2"	316	S
SSK2346	3/4"	316	S
SSK21	1"	304, 316	S, B, GB
SSK21146	1 1/4"	316	S
SSK2112	1 1/2"	304, 316	S, B, GB
SSK21346	1 3/4"	316	S
SSK226	2"	304, 316	S, B, GB

2" Diameter Caps with 3/8" Thread

SSKCAP26S	316	S
SSKCAP24B	304	B
SSKCAP26GB	316	GB

2" Diameter Gaskets (2 pcs.)

- SSKCAP2GAS** Clear Plastic
- SSKCAP2GAX** Black Plastic



Photo: Alumina





Glass Railing Tops



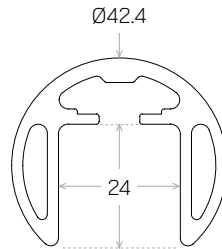
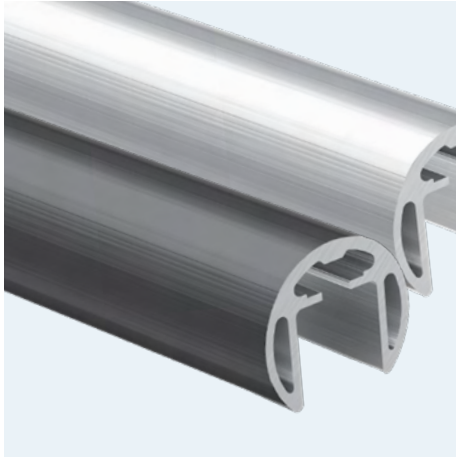
Glass Railing Tops





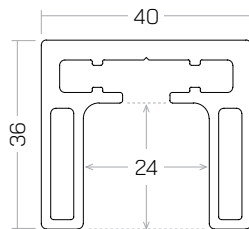
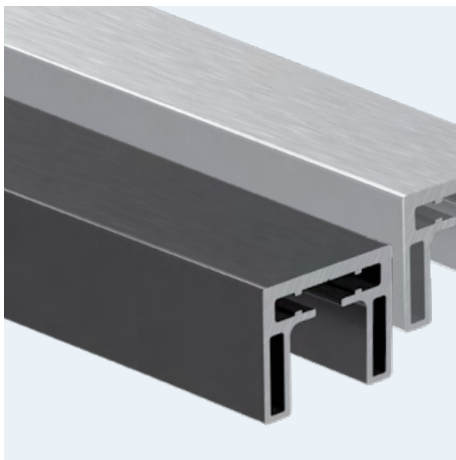
Aluminum Cap

- Brushed Anodized Aluminum 6063.
- Standard 19' lengths.
- Gaskets and full range of Fittings available.
- **NO WELDING REQUIRED** using our recommended SSRK-1500 Adhesive.



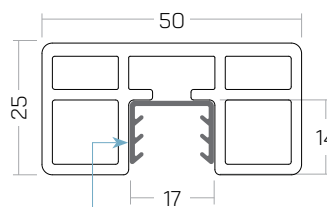
Round

PART #	Finish
SSUTALROCA	A
SSUTALROB	B



Square

PART #	Finish
SSUTALSOCA	A
SSUTALSOB	B
SSUTALSOSB	SB



1/2" Gasket included to accommodate 10-13.52mm Glass



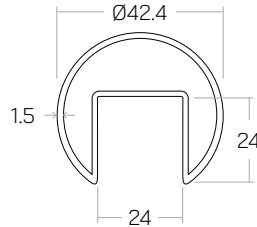
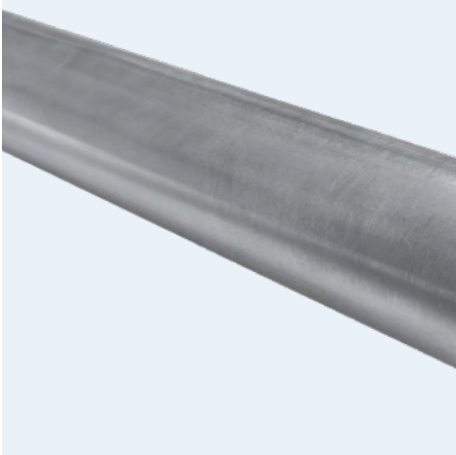
Rectangular

PART #	Finish
SSUTALRECOCA	A
SSUTALRECOB	B
SSUTALRECOB	SB



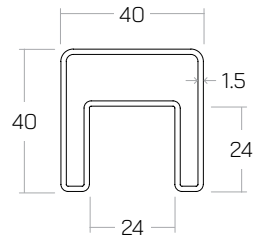
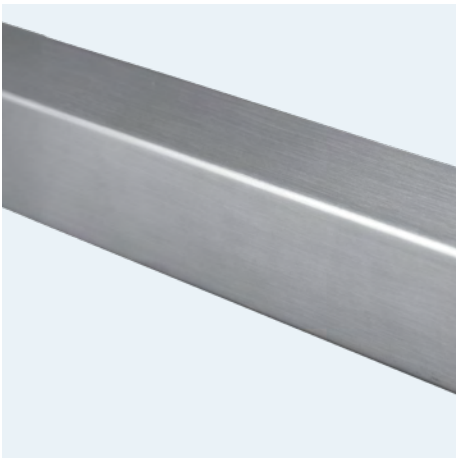
Stainless Steel Cap Rails

- Cap Rails & Fittings are a high Grade Stainless Steel.
- Available in Satin & some sizes in Powder Coated Satin Black.
- Standard 19' lengths.
- Gaskets and full range of Fittings available.



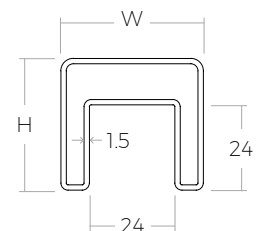
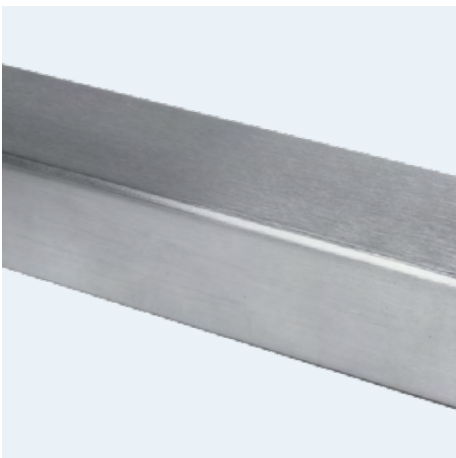
Ø42.4mm Round Cap Rail

PART #	L (Length)	SS Grade	Finish
SSUTRND4240	19'	316	S
SSUTRND4240B	19'	304	B



40mm Square Cap Rail

PART #	L (Length)	SS Grade	Finish
SSUTSQ40000	19'	316	S
SSUTSQ40B	19'	304	B



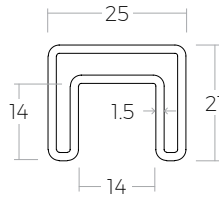
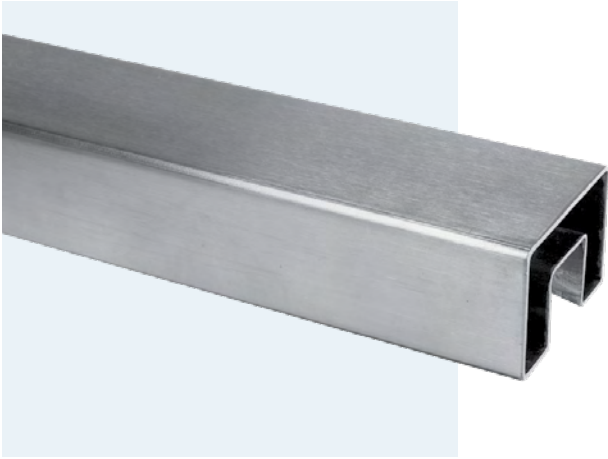
Rectangular Cap Rail (SS Grade 316)

PART #	W (Width)	H (Height)	L (Length)
SSUTREC400	40	30	19'
SSUTREC600	60	40	16'



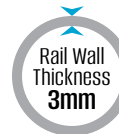
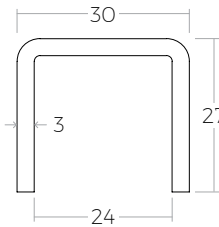
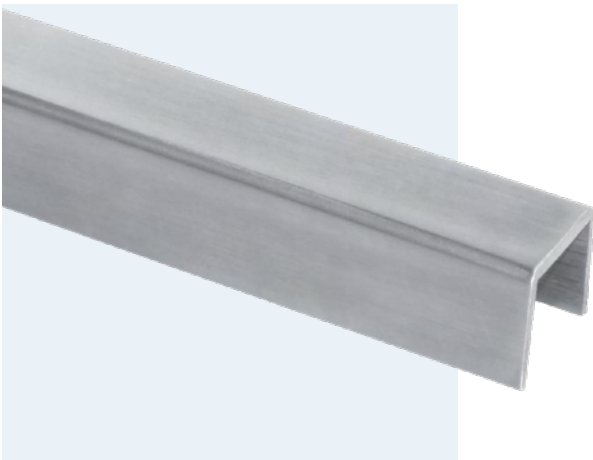
Top Channels & Fittings

- Stainless Steel 316L Grade.
- Available in Satin. Inquire about Powder Coated Satin Black.
- **NO WELDING REQUIRED** using our recommended SSRK-1500 Adhesive.
- Gaskets and full range of Fittings available.



25x21mm Standard Top Channel Rail

PART #	L (Length)	SS Grade	Finish
SSUTCH100	19'	316	S



30X27mm Heavy Duty Top Channel Rail

PART #	L (Length)	SS Grade	Finish
SSUTCH300	19'	316	S

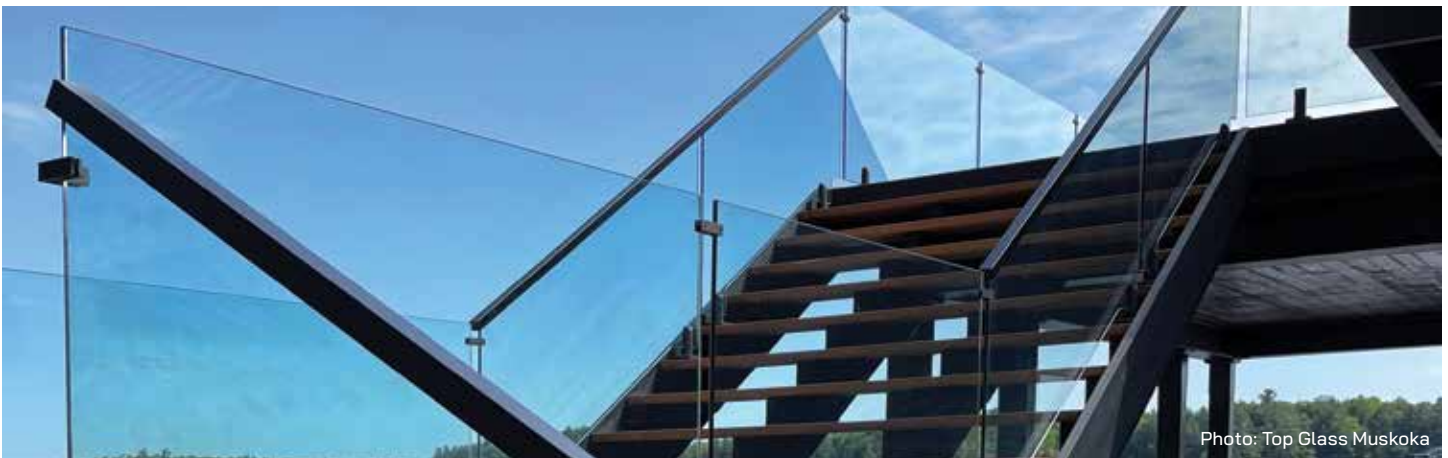
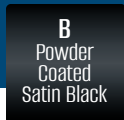
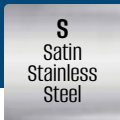


Photo: Top Glass Muskoka





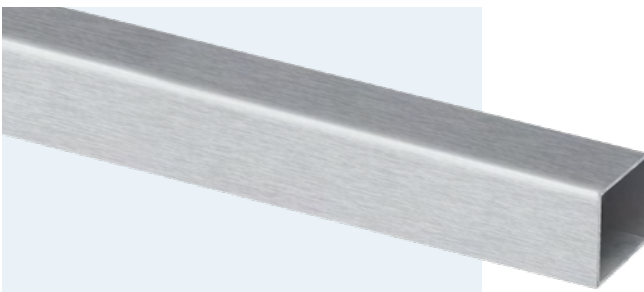
Handrail Profiles & Brackets



Tubes

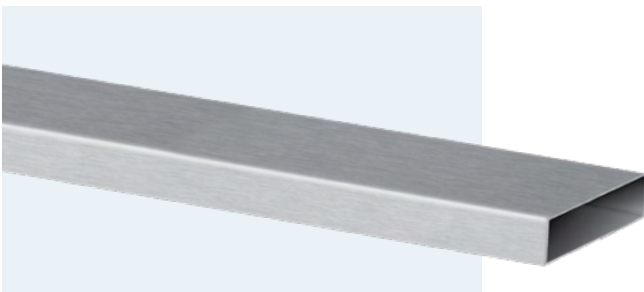
Round 19' Lengths

PART #	ØD	Wall Thickness	SS Grade	Finish
SST11215304	1 1/2"	1.5	304	S
SST11215316	1 1/2"	1.5	316	S
SST1662304	1.66"	2.0	304	S
SST1662304B	1.66"	2.0	304	B
SST1662316	1.66"	2.0	316	S
SST215304	2"	1.5	304	S



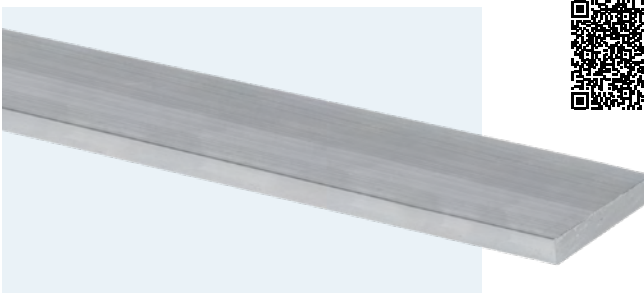
Square 19' Lengths

Part #	W	Wall Thickness	SS Grade	Finish
SSTSQ402304	40	2.0	304	S
SSTSQ402304B	40	2.0	304	B
SSTSQ402316	40	2.0	316	S
SSTSQ22304	2"	2.0	304	S



Rectangular 19' Lengths

Part #	W x H	Wall Thickness	SS Grade	Finish
SSTREC5010	50 x 10	1.5	316L	S
SSTREC212	2" x 1/2"	1.5	316	S
SSTREC21	2" x 1"	1.5	316	S
SSTREC21B	2" x 1"	1.5	316	B



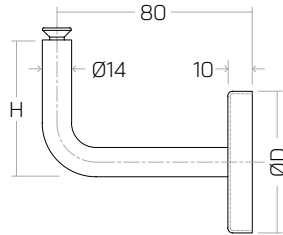
Bars

Rectangular 19' Lengths

Part #	W x H	Wall Thickness	SS Grade	Finish
SSFB212304	2" x 1/2"	N/A	304	S

Round Handrail Brackets

RD2 Series - Standard Concealed



S
Satin
Stainless
Steel

B
Powder
Coated
Satin Black

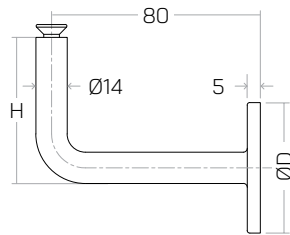
GB
PVD
Brushed
Graphite Black



Off-the-Wall

PART #	H (Height)	ØD (Plate Dia)	Finish
SSWB111416S	50	58	S
SSWB111416B	50	58	B
SSWB111416GB	50	58	GB
SSWB111426S	72	58	S

RD3 Series - Standard Welded



M10 Hanger Bolt required

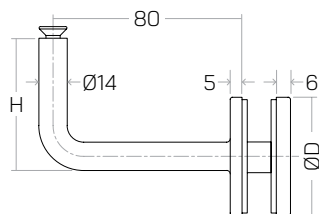
S
Satin
Stainless
Steel



Off-the-Wall

PART #	H (Height)	ØD (Plate Dia)	Finish
SSWB3316S	75	50	S

Matches our 2" Standoffs.



Glass Thickness
12-25.52mm

S
Satin
Stainless
Steel



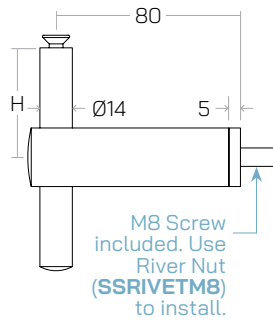
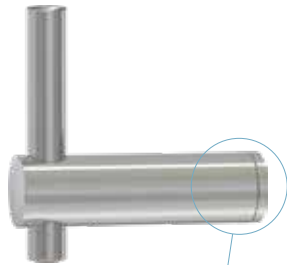
Off-the-Glass

PART #	H (Height)	ØD (Plate Dia)	Finish
SSGF10GX16S	50	50	S
SSGF10GM16S	75	50	S

Matches our 2" Standoffs.

Round Handrail Brackets

RD4 Series - Height Adjustable



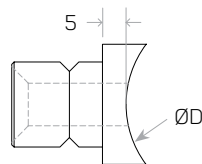
S
Satin
Stainless
Steel

B
Powder
Coated
Satin Black



Off-the-Post Bracket with Flat Adapter

PART #	H (Height)	Finish
SSWF20016S	20-76	S
SSWF20016B	20-76	B



S
Satin
Stainless
Steel

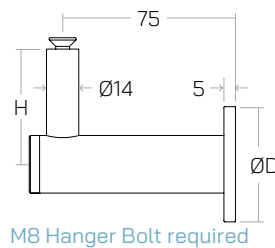
B
Powder
Coated
Satin Black

Adapters for Round Posts

Use with bracket above.

PART #	ØD (Post Dia)	Finish
SSWF20116S	42.4	S
SSWF20116B	42.4	B
SSWF20216S	50.8	S
SSWF20216B	50.8	B

RD5 Series - Heavy Duty

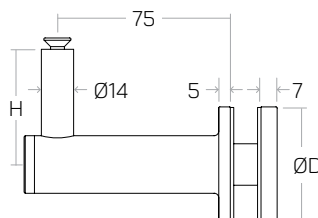


S
Satin
Stainless
Steel

Off-the-Wall

PART #	H (Height)	ØD (Plate Dia)	Finish
SSWF0020016S	50	50	S

Matches our 2" Standoffs.



S
Satin
Stainless
Steel

S
Satin
Stainless
Steel

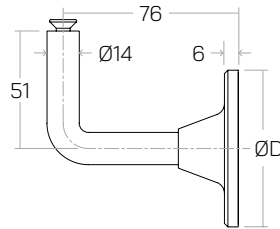
Off-the-Glass

PART #	H (Height)	ØD (Plate Dia)	Finish
SSGF200X16S	50	38	S
SSGF0020016S	50	50	S

Matches our 2" Standoffs.

Matches our 1 1/2" Standoffs.

RD6 Series - Heavy Duty / Length Adjustable

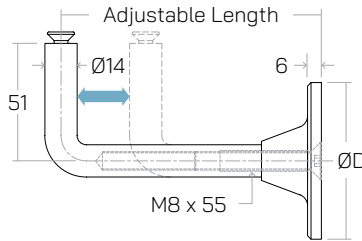


S
Satin
Stainless
Steel

Off-the-Wall Fixed

B
Powder
Coated
Satin Black

PART #	ØD (Post Dia)	Finish
SSWB0100116S	68	S
SSWB0100116B	68	B



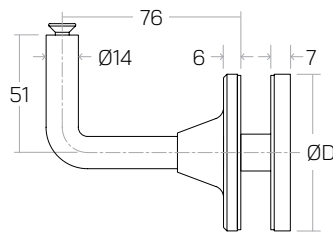
S
Satin
Stainless
Steel

Off-the-Wall Adjustable Length

B
Powder
Coated
Satin Black

PART #	ØD (Plate Dia)	Adjustable Length	Finish
SSWB0100216S	68	76-114	S
SSWB0100216B	68	76-114	B
SSWB0100316S	68	114-152	S
SSWB0100316B	68	114-152	B

Cut to desired length; Collar design conceals cut Rod.

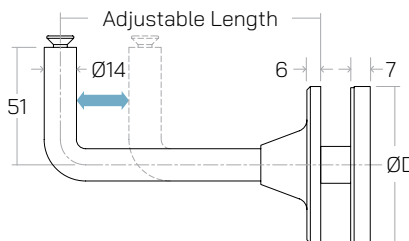


S
Satin
Stainless
Steel

Off-the-Glass Fixed

B
Powder
Coated
Satin Black

PART #	ØD (Post Dia)	Finish
SSGF12GM16S	68	S
SSGF12GM16B	68	B



S
Satin
Stainless
Steel

Off-the-Wall Adjustable Length

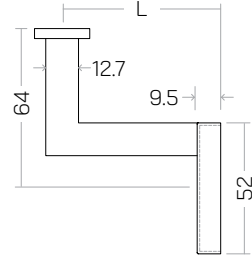
B
Powder
Coated
Satin Black

PART #	ØD (Plate Dia)	Adjustable Length	Finish
SSGF13GM16S	68	76- 114	S
SSGF13GM16B	68	76-114	B
SSGF14GM16S	68	114-152	S
SSGF14GM16B	68	114-152	B

Cut to desired length; Collar design conceals cut Rod.

Square Handrail Brackets

SQ2 SERIES - Standard Concealed



S
Satin
Stainless
Steel

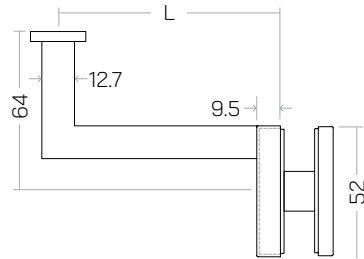
B
Powder
Coated
Satin Black

GB
PVD
Brushed
Graphite Black



Off-the-Wall

PART #	L (Length)	Finish
SSZH21216S	64	S
SSZH31216S	90	S
SSZH31216B	90	B
SSZH31216GB	90	GB



Glass Thickness
10-25.52mm

S
Satin
Stainless
Steel

B
Powder
Coated
Satin Black

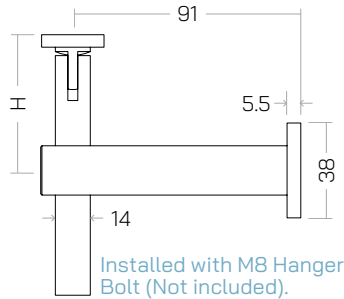
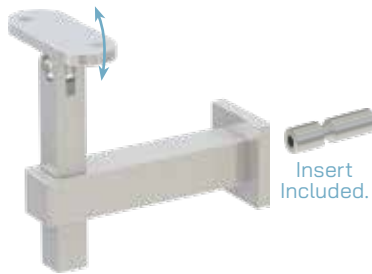
GB
PVD
Brushed
Graphite Black



Off-the-Glass

PART #	L (Length)	Finish
SSZH31226S	90	S
SSZH31226B	90	B
SSZH31226GB	90	GB

SQ4 Series - Height Adjustable

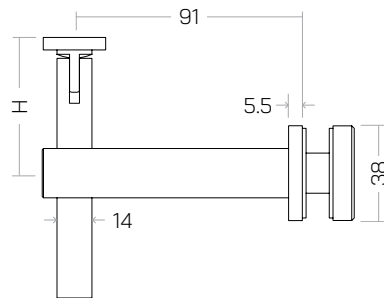
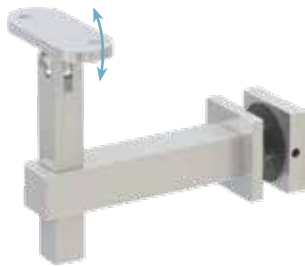


S
Satin
Stainless
Steel

Off-the-Wall Swivel

PART #	H (Height)	Finish
SSZH40116S	30-70	S

Matches our 1 1/2" Square Standoffs.



Glass Thickness
12-19mm

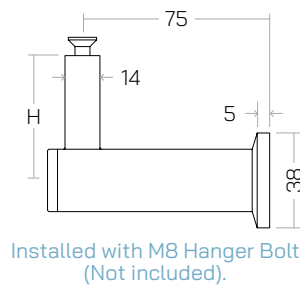
S
Satin
Stainless
Steel

Off-the-Glass Swivel

PART #	H (Height)	Finish
SSZH40216S	30-70	S

Matches our 1 1/2" Square Standoffs.

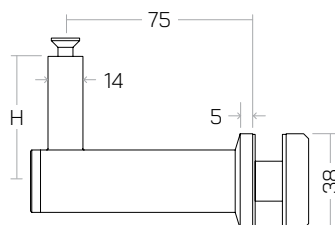
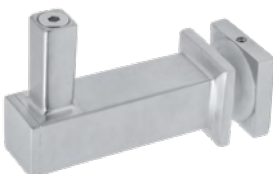
SQ5 Series - Heavy Duty



S
Satin
Stainless
Steel

Off-the-Wall Fixed

PART #	H (Height)	Finish
SSZH0073116S	50	S



Glass Thickness
10-25.52mm

S
Satin
Stainless
Steel

Off-the-Glass Fixed

PART #	H (Height)	Finish
SSZH0073216S	50	S





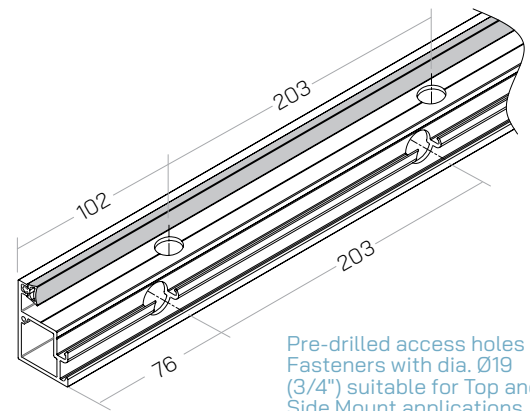
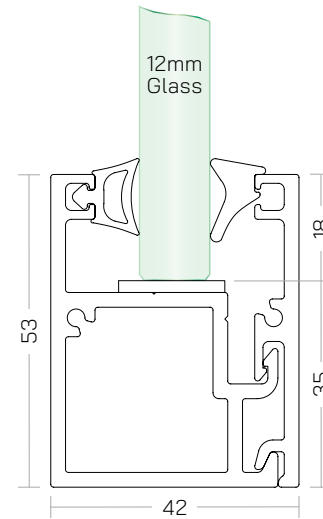
Glass Wall Channels & Kits

Glass Wall Channel Kits



The Glass Channel Kit creates a safe and clean, modern finish to your Glass Walls or Partitions.

- Packed as a 12 ft. Kit, including top and Bottom Channels, End Caps, and Gaskets.
- Designed for Top and Side Mount applications.
- Easy installation with removable Cover.
- Full-frame Glazing (4 sides) possible.
- Engineered based on the Building Code sec. 4.1.5.14 "Loads on Guards". and 4.1.5.16 "Loads on Walls Acting as Guards", and CAN/CGSB 12.20-M89.



Pre-drilled access holes for Fasteners with dia. Ø19 (3/4") suitable for Top and Side Mount applications.

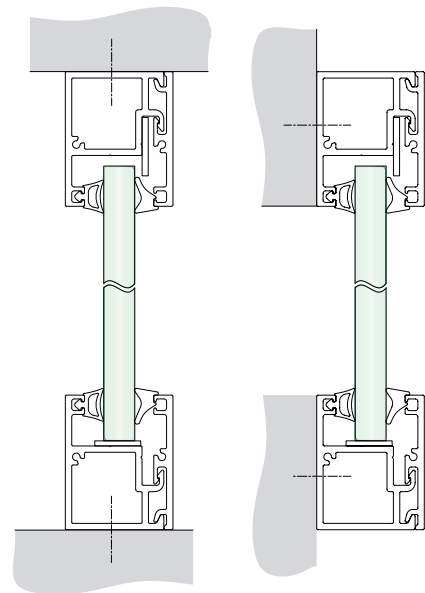
SSGWCH200B
Black Anodized Aluminum

SSGWCH200A
Satin Anodized Aluminum

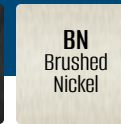
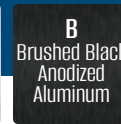


Top Mount

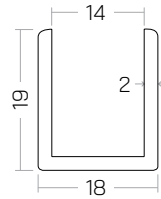
Side Mount



Glass Wall Channels

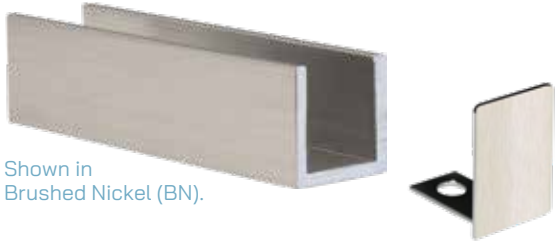


Shown in
Satin Anodized Aluminum (A).

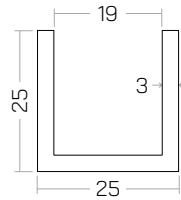


1 1/16" x 3/4"

PART #	Finish
SSGWCH5834	BN, A, CP, B



Shown in
Brushed Nickel (BN).

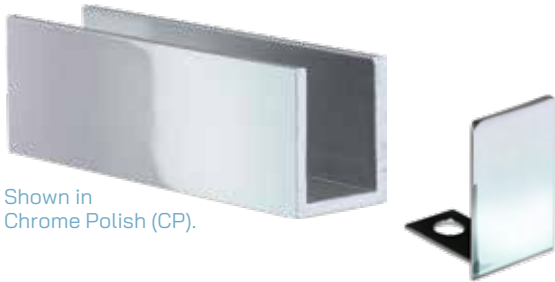


1" x 1"

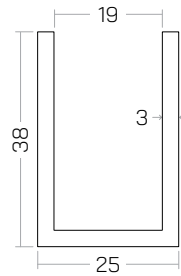
PART #	Finish
SSGWCH11	BN, A, CP, B

Available End Cap

PART #	Finish
SSGWCH11E	BN, A, CP, B



Shown in
Chrome Polish (CP).

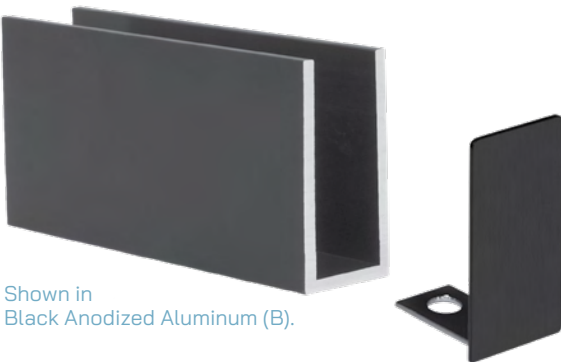


1" x 1 1/2"

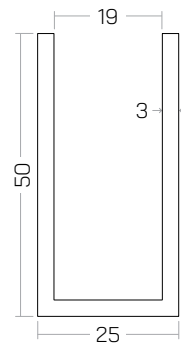
PART #	Finish
SSGWCH112	BN, A, CP, B

Available End Cap

PART #	Finish
SSGWCH112E	BN, A, CP, B



Shown in
Black Anodized Aluminum (B).

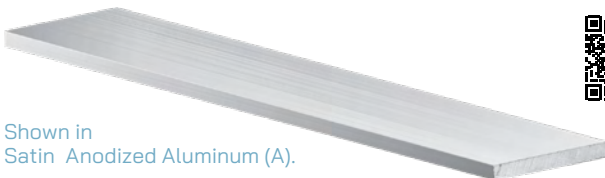


1" x 2"

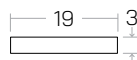
PART #	Finish
SSGWCH12	BN, A, CP, B

Available End Cap

PART #	Finish
SSGWCH12E	BN, A, CP, B



Shown in
Satin Anodized Aluminum (A).



Aluminum Flat Bar 1/8" x 3/4" X 144"

PART #	Finish
SSGWFL34	A, B

DISCLAIMER:

Euro Architectural Components carefully reviewed to ensure that the content in this catalogue was accurate at the time of print. We are not responsible for misinformation due to human error. Images or colours may not be exact due to rendering, photographic, or printing procedures. Consult your local authorities to ensure your design complies with all building code requirements. For our complete terms & conditions scan here, or copy the following link: <https://euroeac.com/terms-conditions/>.
May 2024 v1.



euroeac.com

 **euRO** ARCHITECTURAL
COMPONENTS
Since 1995 • A Division of Richelieu Hardware Ltd.

TORONTO 127A Aviva Park Drive, Woodbridge, Ontario L4L 9C1 • Tel. 905.265.1093 • Toll Free 800.465.7143
MONTRÉAL 9015 rue Champ d'Eau, Montréal, Québec H1P 3M3 • Tél. 514.325.7977 • Sans Frais 866.574.7979
CALGARY 220-10 Stonehill Place NE, Calgary, Alberta T3N 1T7 • Tel. 905.265.1093 • Toll Free 800.465.7143