

richlite[®]

Exterior Cladding

**WUI (Wildland Urban Interface)
Compliant exterior rain screen panels
engineered for wildfire-prone regions.**



WUI-LISTED EXTERIOR WALL ASSEMBLY *RICHLITE COLOR: SLATE*

Cal Fire OSFM Listing No.: 8140-2427:0001

**Category 8140 – Exterior Wall Siding
& Sheathing for WUI**

Tested to SFM 12-7A-1

Listed as an exterior wall assembly for WUI areas

Date Issued: 02/23/2026

Recognized by Cal Fire OSFM

- Designed for ember and flame exposure conditions
- Ready for permit submittals in WUI jurisdictions

VENTILATED RAIN SCREEN DESIGN

Richlite panels are installed as a back-ventilated rain screen system:

- Continuous air space & drainage plane
- Improved drying potential
- Enhanced moisture management
- Reduced trapped water risk
- Pressure Equalization
- Improved thermal and energy performance
- Increased durability and longevity

HIGH PERFORMANCE PANELS.

Unlike many WUI-compliant cladding products, Richlite panels delivers:

- Dense, through body composite construction
- Large-format panel aesthetic
- Clean 3/8" shadow reveals
- Matte, non-reflective finish
- Durable, dense composite construction
- Modern appearance
- Sustainability embedded in the material
- Warm, natural material expression
- Wildfire resilience without compromising architecture.

DURABILITY BENEFITS

Engineered for long-term performance in demanding exterior environments.

- Impact-resistant composite panel
- Moisture-resistant performance
- Stable in fluctuating climates
- Low maintenance exterior surface
- Long service life

SUSTAINABLE BY COMPOSITION. DURABLE BY DESIGN.

Transparent. Documented. Verifiable.

Richlite Exterior Cladding can contribute to LEED v5 material-related credit pathways, including:

- Environmental Product Declaration (EPD) documentation supporting lifecycle impact assessment
- Health Product Declaration (HPD) supporting material ingredient transparency
- FSC-certified fiber content supporting responsible sourcing strategies
- Declare® label documentation for enhanced material disclosure
- GREENGUARD Gold certification supporting environmental air quality goals
- Durable, long-service-life composite supporting whole-building lifecycle strategies

IDEAL APPLICATIONS

- Custom homes in wildfire-prone regions
- Mountain residences
- High desert architecture
- Modern cabins
- WUI multifamily projects
- ADUs in WUI zones

TECHNICAL SNAPSHOT

- Thickness: 5/16"
- System Type: Ventilated rain screen
- Panel Spacing: 3/8" reveal
- Test Standard: SFM 12-7A-1

SIMPLIFY WUI PERMITTING

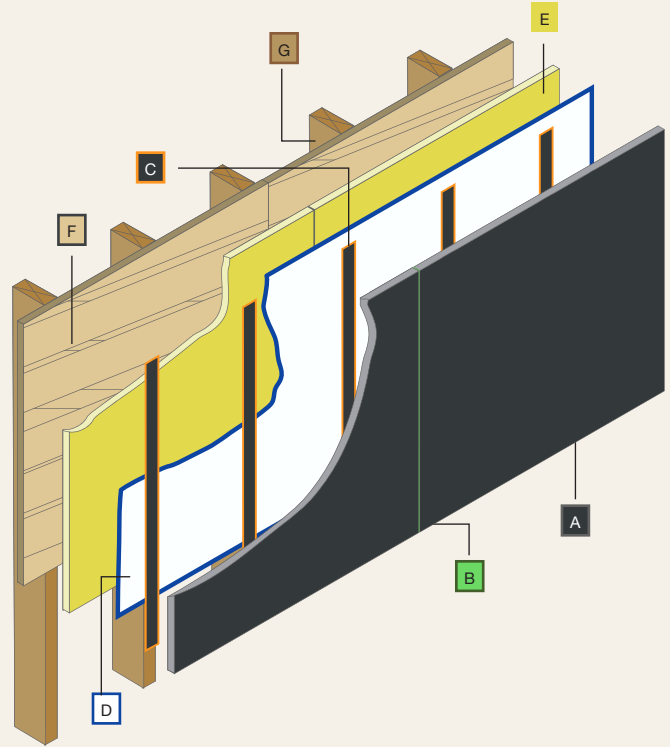
Richlite Slate is listed as an exterior wall assembly for use in WUI areas

WUI Certification

Provide your plan reviewer with:

- Listing number
- Installation instructions
- Product data sheet

RICHLITE WUI WALL ASSEMBLY COMPLIANCE



- A** 5/16" Richlite® Slate exterior panels
- B** 3/8" perimeter panel spacing
- C** 5/16" x 3" Richlite furring strips @ 16" O.C.
- D** Weather Resistant Barrier (Tyvek)
- E** 1/2" Type X gypsum (DensGlass)
- F** 7/16" OSB sheathing
- G** 2x4 framing @ 16" O.C.

richlite
Exterior Cladding

Modern cladding for wild-fire-prone environments

MADE IN AMERICA SINCE 1943
richlite.com | info@richlite.com
#MakeitwithPaper

Declare.

