



Cornering Options

INSTALLATION GUIDE

THERMORY[®]
LEAVE A LASTING IMPACT

Please read the entire installation guide and ensure your warranty is registered. Instructions can be found at the end of this guide.

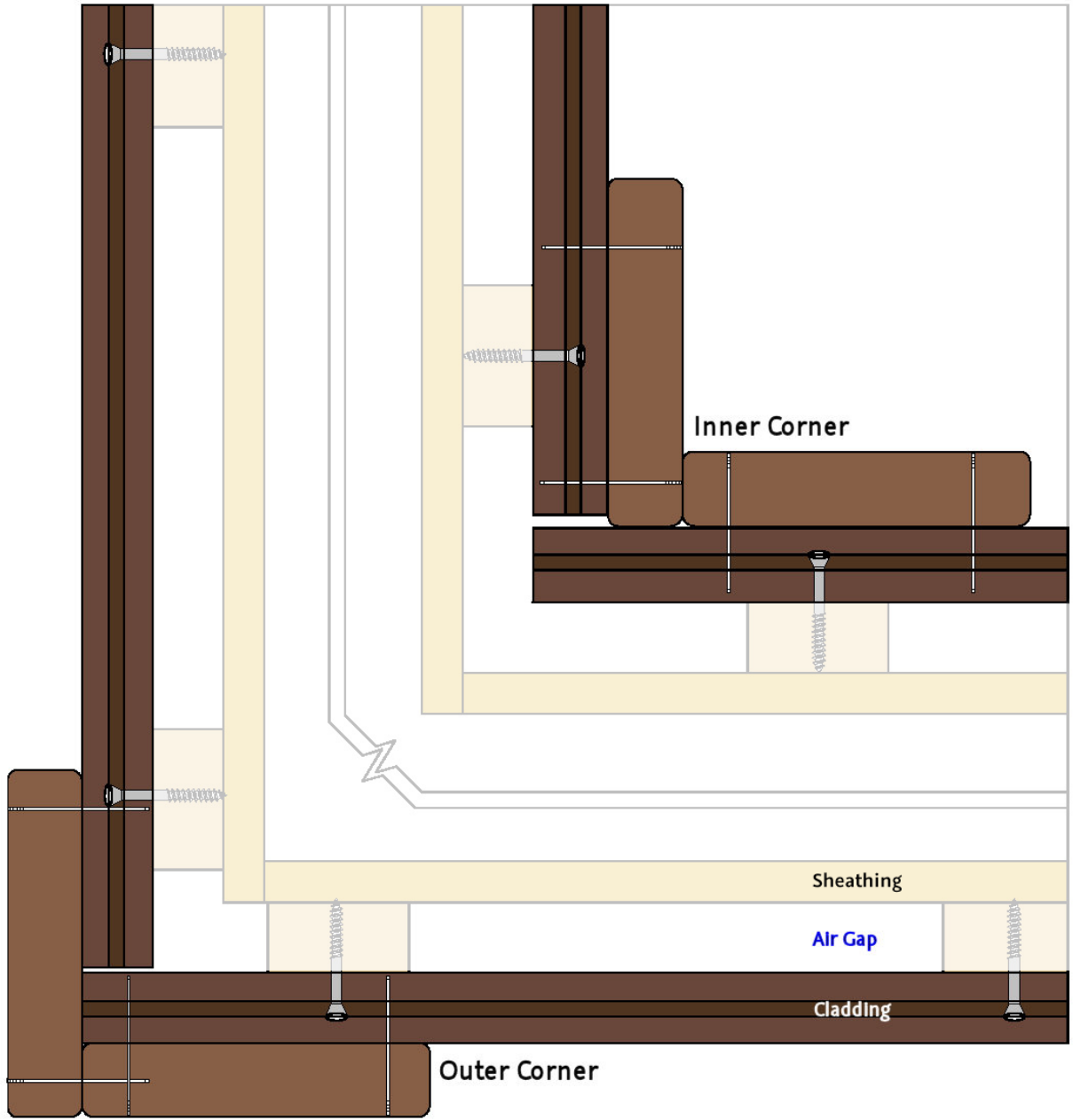
Please find the following drawings as options of corner detailing for your upcoming Thermory project. These drawings are by no means a conclusive list, but are meant to inspire the many options at your disposal.

- ▶ Interior and Exterior details can be mixed and matched and can be also carried over to our Pine and Spruce cladding options as well.
- ▶ As a rule all fasteners must be stainless, whether it be screws, brads or nails. We also carry matching plugs if you desire to hide the fastening.
- ▶ Please allow for a gap of at least 1/32" for expansion and do not caulk the gap.
- ▶ Check the boards thoroughly for possible manufacturing and moisture defects, as well as transport-related damage prior to installation, and never install defective boards. **ONCE INSTALLED, PRODUCTS ARE DEEMED TO HAVE BEEN ACCEPTED IN TERMS OF QUALITY.**



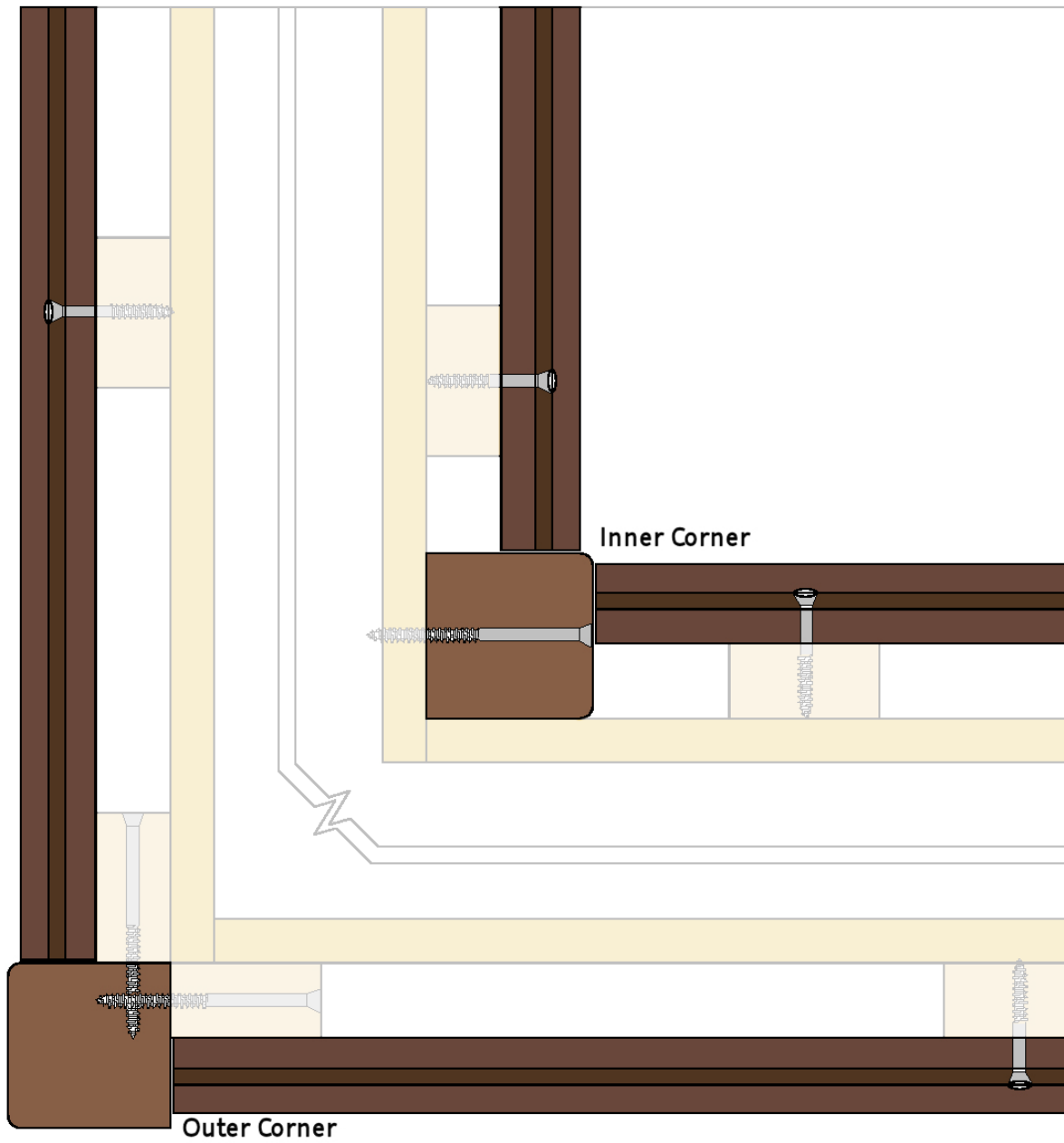


OPTION 1 – 1 x 4 No Groove Decking Utilized



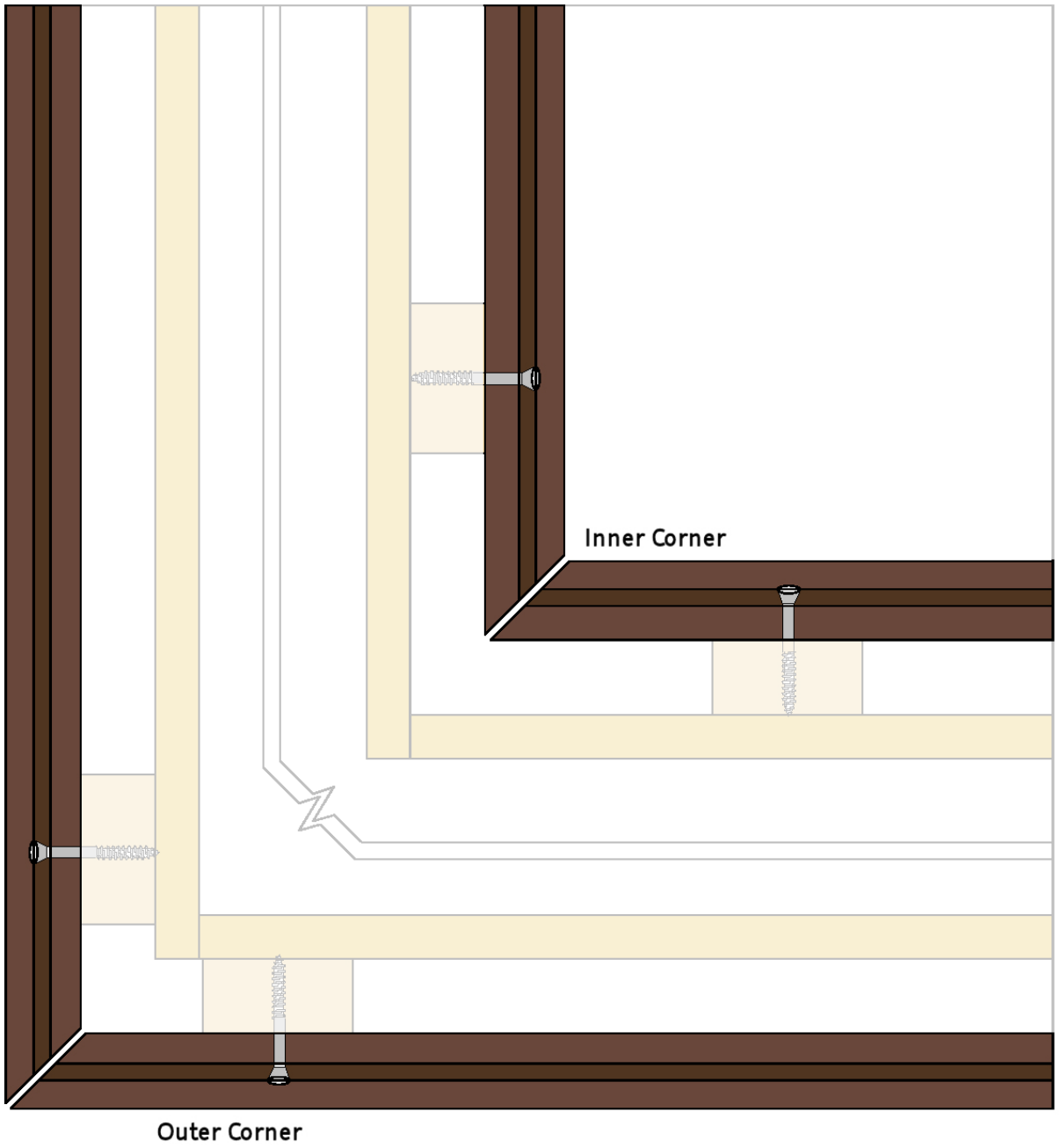


OPTION 2 – Butting with 5/4 and 2 X Material

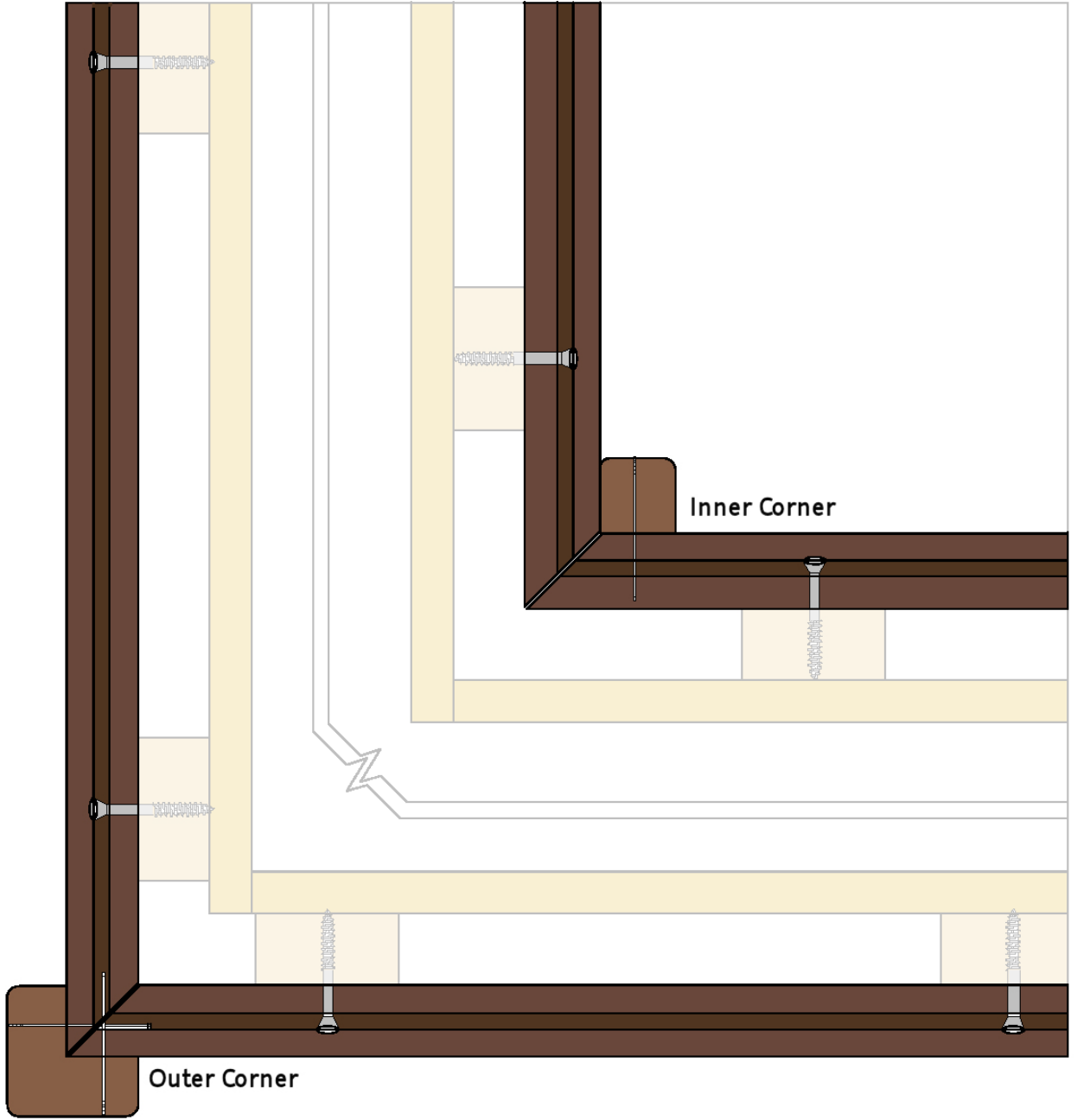




OPTION 3 – Mitered Corner with Slight Gap

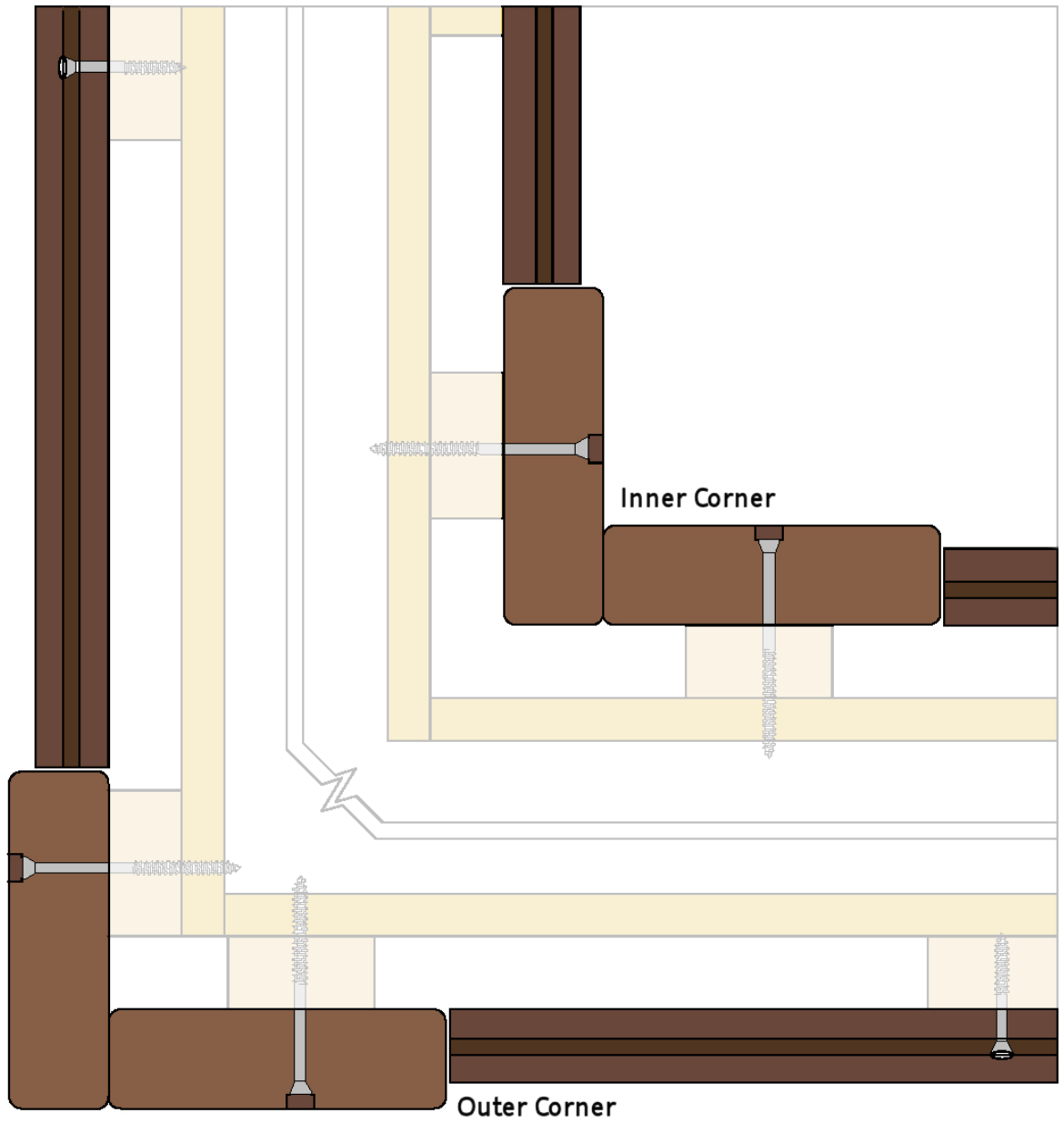


OPTION 4 – Capped Corners

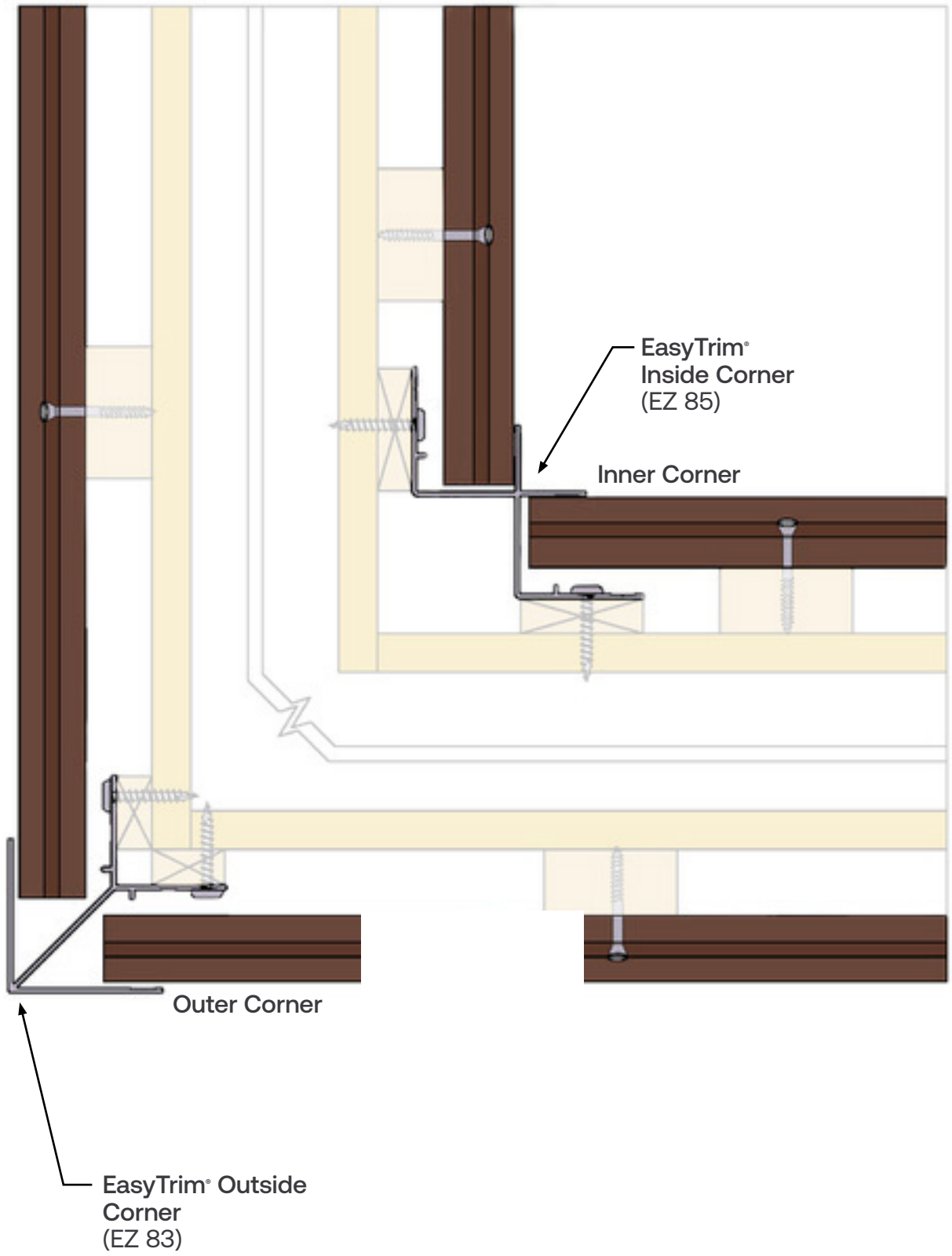




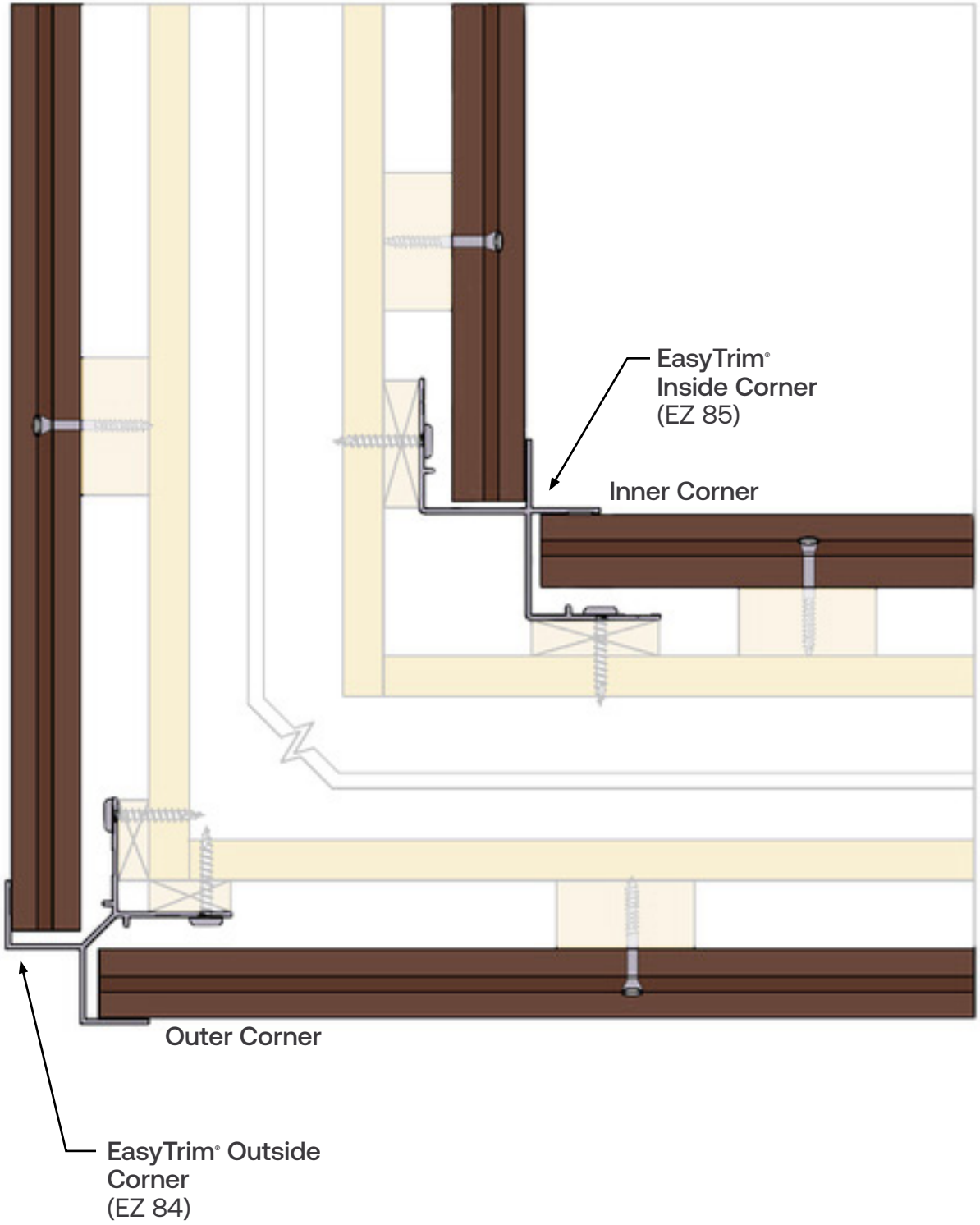
OPTION 5 – 5/4 x 4 Decking for Corners

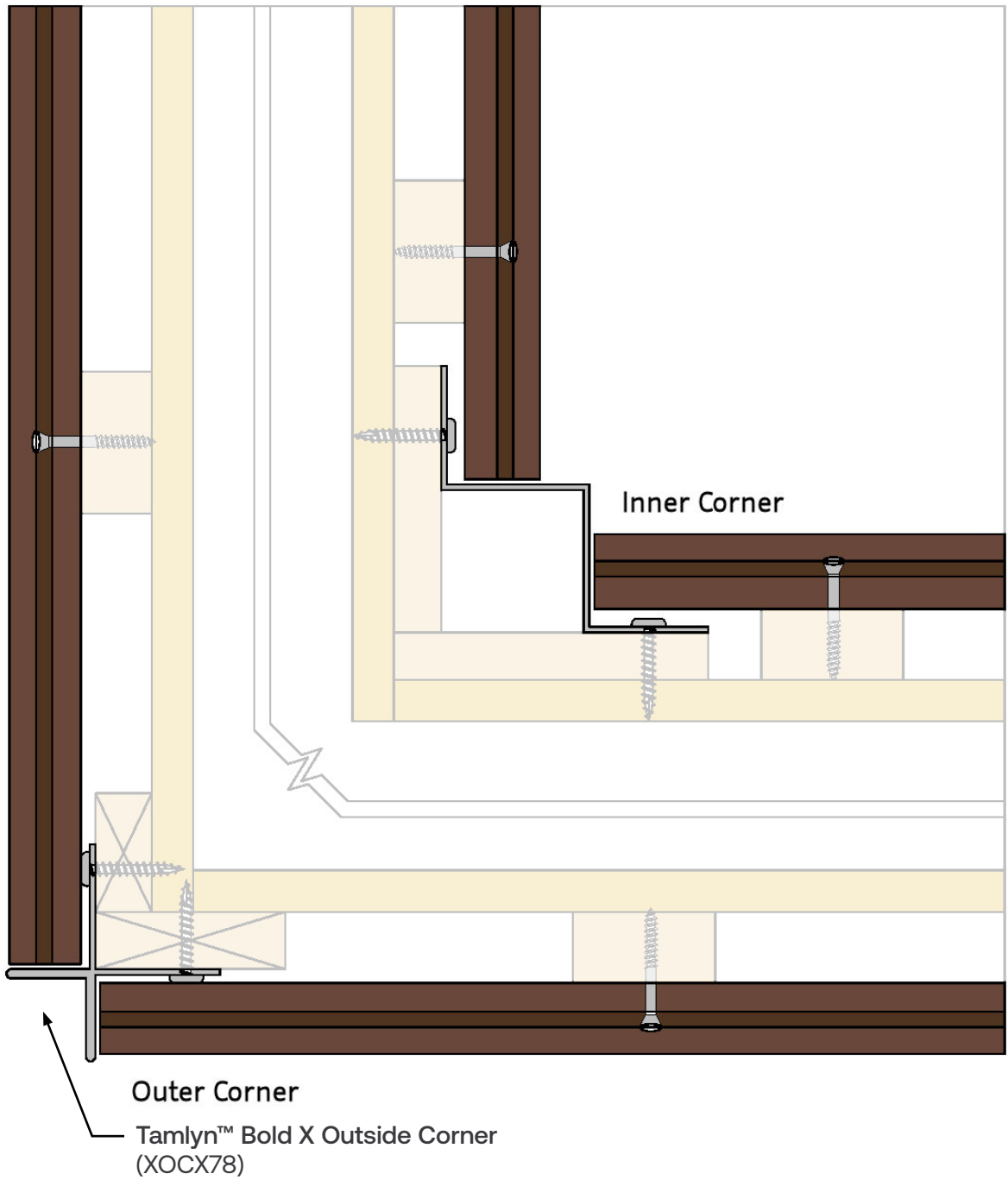


OPTION 6 – EasyTrim Inside & Outside Corner



OPTION 7 – EasyTrim Inside & Outside Corner





LIMITED PRODUCT WARRANTY

This Limited Product Warranty grants specific legal rights, which may vary by state. To activate the Warranty, the original purchaser must email the following to warranty@thermoryusa.com within 90 days of original purchase:

1. Proof of purchase (receipt).
2. Installer's name, address, phone number, and email.
3. Purchaser's name, address, phone number, and email.

For full details, visit thermoryusa.com/downloads.

