

PETfeil.

slalom[®]
acoustic & partition systems

Let us introduce you to... **PETfelt.**

PETfelt. è un feltro che nasce da materie prime riciclate e riciclabili. Slalom sviluppa questo materiale in Italia a partire dal riciclo di bottiglie di plastica, attraverso un processo di selezione e produzione attenta all'etica e alla sostenibilità, in sinergia con una filiera radicata sul territorio. Un prodotto unico e responsabile a cui non poter rinunciare.

PETfelt. is a felt that comes from recycled and recyclable raw materials. Slalom develops this material in Italy starting from the recycling of plastic bottles, through a selection and production process that is attentive to ethics and sustainability, in synergy with a supply chain rooted in the territory. A unique and responsible product that you cannot give up.



#ThereisNOPlanetB



96% RECYCLED PLASTIC



100% RECYCLABLE



100% TRACEABLE SOURCES



MADE IN ITALY
for SLALOM



ENERGY SAVINGS
18,2 kWh x 1kg PETfelt



WATER SAVINGS
0 Lt x 1kg PETfelt



CO2 SAVINGS
2.5 kg x 1kg PETfelt

We can do it!

PRODUCT CERTIFICATIONS

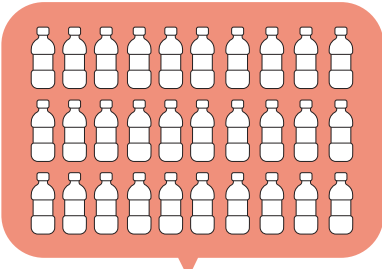


BUILDING CERTIFICATIONS

Product compliant for



1 kg OF PETFELT HAS SAVED...



COMPOSITION

30 bottles = 1kg PETfelt



ENERGY SAVINGS

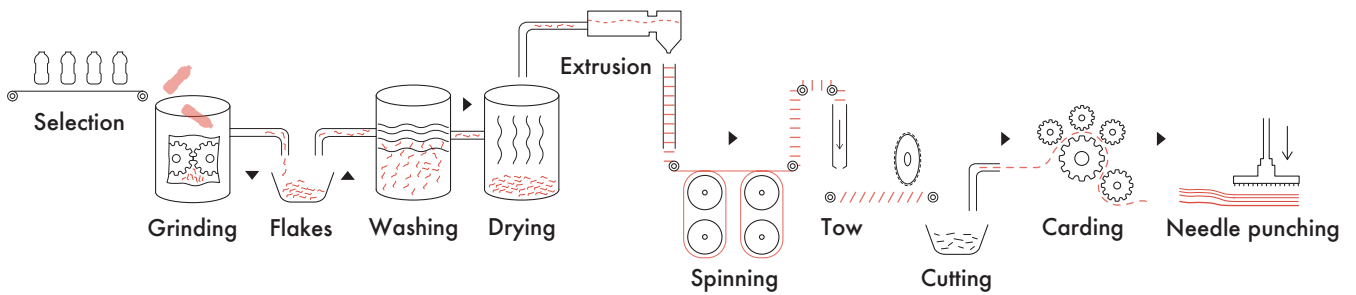
2141 days charging your phone



ENERGY SAVINGS

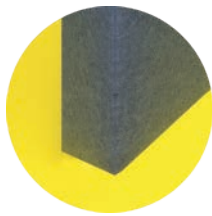
140 days charging your laptop

...THANKS TO RESPONSIBLE PRODUCTION PROCESS

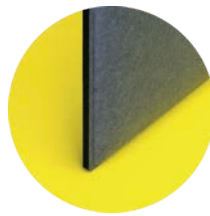


Can you hear it?

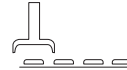
ACOUSTIC TECHNOLOGY AND PERFORMANCE



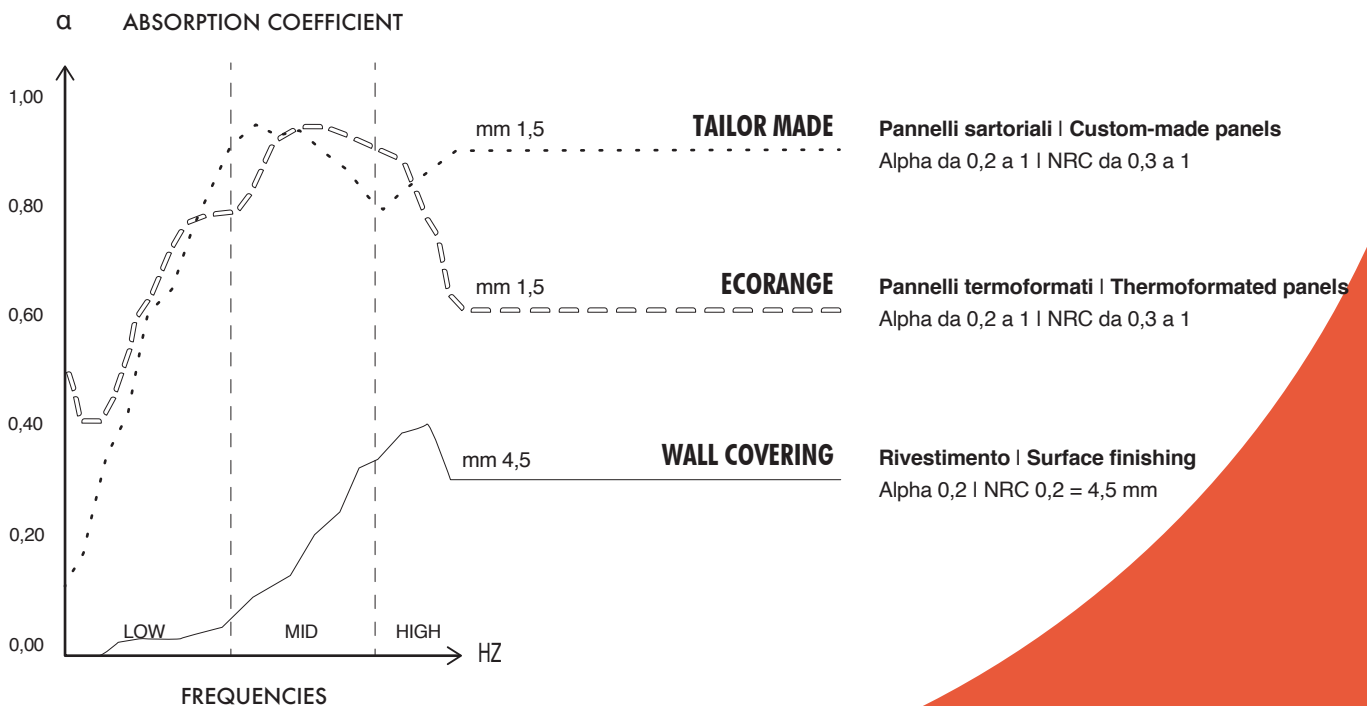
TAILOR MADE



ECORANGE



WALL COVERING



MATERIAL OVERVIEW

PETfelt



ENVIRONMENTAL IMPACT



COMPOSITION

96% PET - Materiale realizzato dal riciclo di bottiglie di plastica postconsumo.



RECYCLABLE

100% Prodotto riciclabile nel rispetto dell'ambiente.



MADE IN ITALY



FIRE RESISTANCE

TESSUTO *Opzionale	UE: B-s2, d0 - UNI EN 13823:2010+A1:2014 USA: Class A e C - ASTM E 84-18
PANNELLI	B-s1, d0 - UNI EN 13823:2010+A1:2014 B-s2, d0 - UNI EN 13823:2010+A1:2014



PEOPLE FRIENDLY

Prodotto a bassa emissione chimica per una migliore qualità dell'aria.

- Greenguard Gold certified
- Global Recycled Standard
- VOC conforme a tutti gli standard UE



BUILDING FRIENDLY

Adatto per certificazione architettonica per edifici Breeam, Leed, Well e Fitwel.



ACOUSTIC COMFORT

Valutazione secondo UNI ISO 11654, UNI EN ISO 354 e ASTM C423 - 09a.



EASY CLEANING

Usare con regolarità l'aspirapolvere a beccuccio liscio, oppure utilizzare spazzole a setole morbide o detergenti professionali per imbottiti.



ANTIBACTERIA (OPTIONAL)

NEW!



ANTIDROP (OPTIONAL)

NEW!



DURABILITY

Martindale Pilling: UNI EN ISO 12945-2:2002
5.000 cicli - 2 mm e 4,5 mm: grado 2-3
Martindale Abrasione: UNI EN ISO 12947-1:2000
10.000 cicli - 2 mm e 4,5 mm: grado 3



COLOUR MATCHING

Leggere differenze di colore tra una partita e l'altra sono da considerarsi normali e garanzia di riciclo.



POINT OUT!

Il feltro è caratterizzato dalla presenza di piccoli punti, legati al processo di cardatura del feltro tinto in fibra. Le impurità sono più evidenti su feltri chiari e a tinta unita.



CATEGORY

Categoria A



INDOOR QUALITY

96% PET - Material made from recycled plastic bottles.

100% Recyclable product respecting the environment.

FABRIC *Optional	UE: B-s2, d0 - UNI EN 13823:2010+A1:2014 USA: Class A and C- ASTM E 84-18
PANELS	B-s1, d0 - UNI EN 13823:2010+A1:2014 B-s2, d0 - UNI EN 13823:2010+A1:2014

Recyclable product respecting the environment for a better indoor air quality.

- Greenguard Gold certified
- Global Recycled Standard
- VOC compliant to all EU standards

Suitable for Breeam, Leed, Well and Fitwel building certifications.

Rating according to UNI ISO 11654, UNI EN ISO 354 and ASTM C423 - 09a.

Use regularly the vacuum-cleaner with smooth spout, or brushes with soft bristles, or upholstered professional cleaners.



DESIGN COMMITMENT

Martindale Pilling: UNI EN ISO 12945-2:2002
5.000 turns - 2 mm e 4,5 mm: grado 2-3
Martindale Abrasion: UNI EN ISO 12947-1:2000
10.000 turns - 2 mm e 4,5 mm: grado 3

Slightly differences between dyeing lots are considered normal and recycling guarantee.

Felt is characterized by the presence of small dots, linked to the carding process of the fiber-dyed felt. Impurities are most noticeable on light-colored and solid colored felts.

Category A

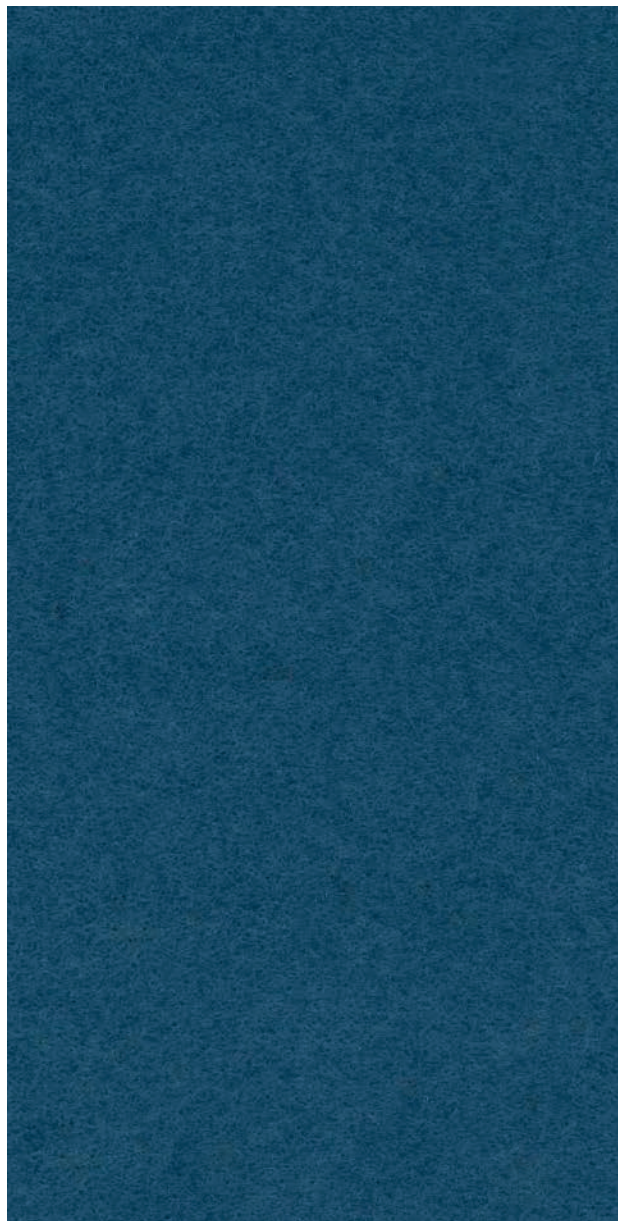


DESIGN COMMITMENT

MATERIAL CORE



THICKNESS



Summer night 21

mm 1,5 | gr/mtl 420

mm 4,5 | gr/mtl 1200
**



WIDTH



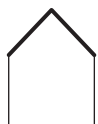
cm 150 ± 5% | " 59 ± 5%
Senza adesivo sul retro / Not-Adhesive back



cm 145 usable ± 2% | " 57 ± 2%
Adesivo sul retro / Adhesive back (see 4,5 mm)**



APPLICATIONS



CEILING



WALL



CURTAIN



FREE-STANDING



DESK



FURNITURE



PETfelt



Pale yellow 41



Duck Orange 43



Pastel pink 37



Kiwy 28



Light blue 8



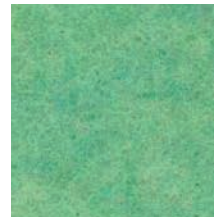
Yellow 3



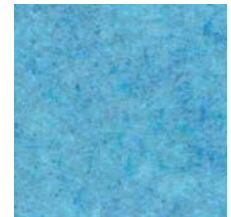
Orange 9



Pink 17



Celadon 39



Egg blue 38



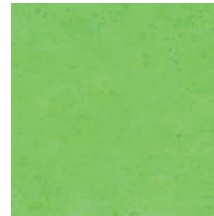
Alabaster 32



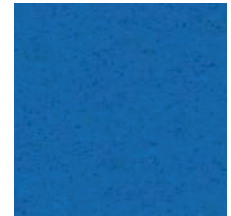
Dark Orange 14



Barbie 113



Acid green 7



Blue 13



Beige 16 *



Red 6



Wisteria pink 36



Water green 2



Azure 1



Tuscan brown 20



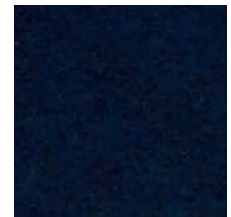
Ruby red 27



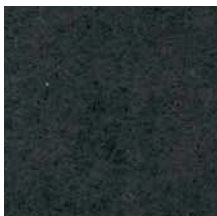
Fuchsia 10



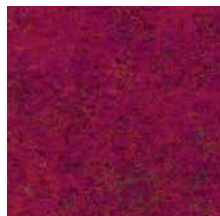
La salle green 12



Dark blue 5



Mud 19



Sangria 30



Purple 11



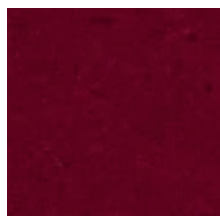
Jungle green 31



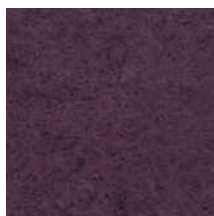
Summer night 21 *



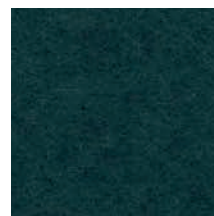
Raspberry 47



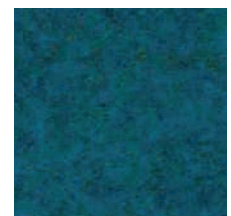
Bordeaux 15



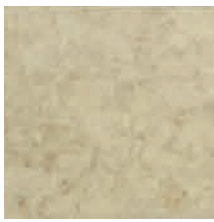
Grapes 23



Grey green 22



Pacific blue 29



NEW!

Milk 955P



Grey 4



Rich black 18



Opal 33



NEW!

Charm blue 44



NEW!

Fog 953P



NEW!

Ash 703



NEW!

Rhino 903



NEW!

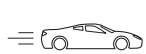
Street 529



NEW!

Midnight 905

*** IN STOCK COLOURS**



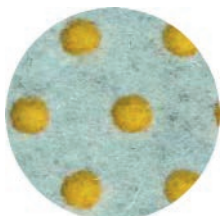
SUPERFAST DELIVERY!

FABRIC 4,5 mm - Adesivo sul retro / Adhesive back **



DESIGN YOUR OWN!

* DECOfelt and PRINT colour chart



POISfelt



B-sided



Printable

What's behind?

Sostenibilità . Comfort . Design

La missione di Slalom è quella di partecipare attraverso materiali dalle altissime qualità innovative e tecniche alla creazione di un ambiente sano, dal comfort acustico eccezionale e progettato su misura per le persone. Lo fa attraverso l'impegno per la protezione dell'ambiente e della salute dell'uomo, sviluppando un'ampia gamma di prodotti e soluzioni tailor-made investendo costantemente in funzionalità, durabilità e riciclo.

Sustainability . Comfort . Design

An important mission for Slalom, in compliance with the surrounding environment and people's health. The commitment to protect the environment and human health is a priority in our path to sustainability. Slalom develops its range from the idea that each product has use, durability and recycling as its key. Slalom develops its range from the idea that each product has use, durability and recycling as its key.

#WorkingForQuality

Company Certification



#SupportingSustainability

Slalom is partner of



MEMBER

#SupportingCulture

PEGGY GUGGENHEIM COLLECTION

#SupportingResearch



#SupportingWomen:

75% Female employees

#SocialResponsibility:

Sustainability Report 2020

#CorporateResponsibility:

Check online our Ethic Code



SLALOM srl