

Ecofelt.

slalom[®]
acoustic & partition systems

Let us introduce you to... **ECOfelt.**

ECOfelt. è un feltro interamente prodotto in Italia tramite materie prime naturali e 100% riciclabili. Attraverso un processo di produzione trasparente e responsabile, Slalom sviluppa questo prodotto che nasce da lana naturale proveniente da una filiera scelta e da un'attenzione meticolosa nei confronti dell'ambiente, degli animali e dell'uomo. Dalla gamma colori sfaccettata, Ecofelt è un materiale intramontabile.

ECOfelt. is a felt entirely produced in Italy using natural and 100% recyclable raw materials. Through a transparent and responsible production process, Slalom develops this product that comes from natural wool from a selected supply chain and meticulous attention to the environment, animals and man. From the multifaceted color range, Ecofelt is a timeless material.



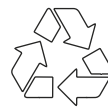
#WorkWithNatureToDeliverInnovation



90% NATURAL WOOL



ECO FRIENDLY



100% RECYCLABLE



CONTROLLED CHEMICALS

Protocol for reduction



100% TRACEABLE SOURCES



MADE IN ITALY

for SLALOM

We can do it!

PRODUCT CERTIFICATIONS



Green Product Award



BUILDING CERTIFICATIONS

Product compliant for

BREEM®



fitwel®

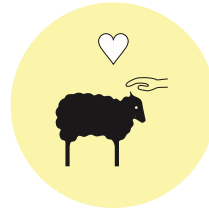
FROM RENEWABLE & BIODEGRADABLE FIBER...



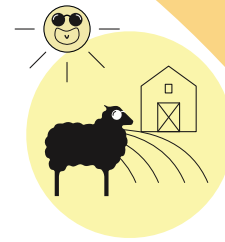
FAMILY



HEALTH



LOVE



FREETIME

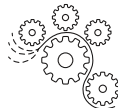
...TO RESPONSIBLE PRODUCTION PROCESS!



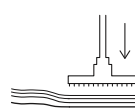
Fiber



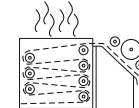
Coloring



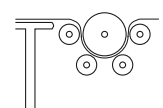
Carding



Needle punching



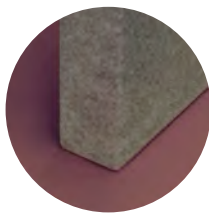
Thermofixing



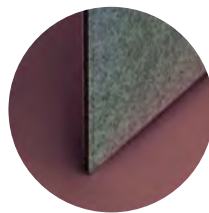
Pressing

Can you hear it?

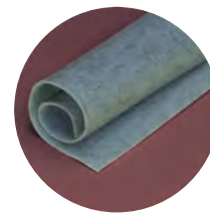
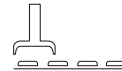
CONVERT TRANSPARENCY FOR ACOUSTIC TECHNOLOGY AND PERFORMANCE



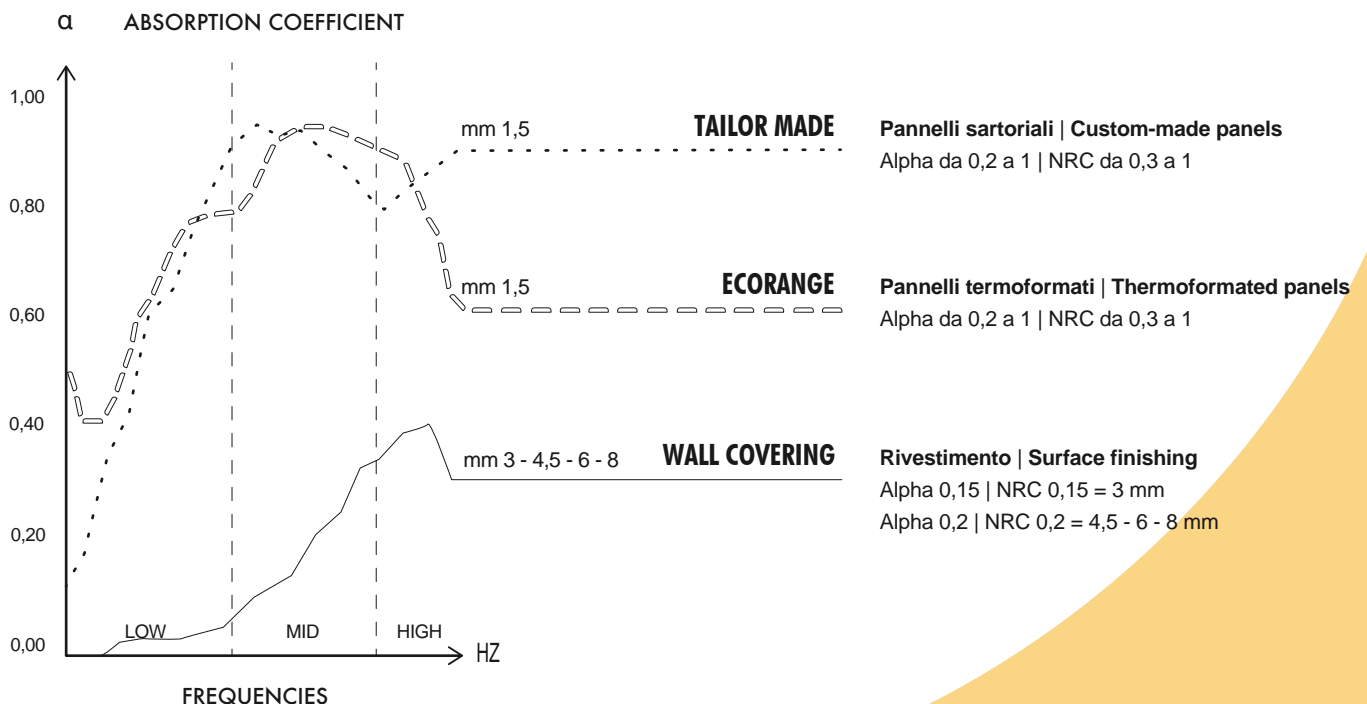
TAILOR MADE



ECORANGE



WALL COVERING



MATERIAL OVERVIEW

ECOfelt.



COMPOSITION

90% lana naturale, 10% poliestere
Tessile ecologico in feltri naturali di lana.



RECYCLABLE

100% Prodotto riciclabile nel rispetto dell'ambiente.



MADE IN ITALY



FIRE RESISTANCE

TESSUTO | UE: B-s2, d0 - UNI EN 13823:2010+A1:2014
*Opzionale USA: Class A - ASTM E 84-18
PANNELLI | B-s1, d0 - UNI EN 13823:2010+A1:2014
B-s2, d0 - UNI EN 13823:2010+A1:2014



PEOPLE FRIENDLY

Prodotto a bassa emissione chimica per una migliore qualità dell'aria.
- Greenguard Gold certified
- VOC conforme a tutti gli standard UE



BUILDING FRIENDLY

Adatto per certificazione architettonica per edifici Breeam, Leed, Well e Fitwel.



ACOUSTIC COMFORT

Valutazione secondo UNI ISO 11654, UNI EN ISO 354 e ASTM C423 - 09a.



EASY CLEANING

Usare con regolarità l'aspirapolvere a beccuccio liscio, oppure utilizzare spazzole a setole morbide o detergenti professionali per imbottiti.



NEW!



ANTIBACTERIA (OPTIONAL)

NEW!



ANTIDROP (OPTIONAL)



DURABILITY

Martindale Pilling: UNI EN ISO 12945-2:2002
5.000 cicli: 1,5 mm - grado 2 / 4,5 mm - grado 3
Martindale Abrasion: UNI EN ISO 12947-1:2000
14.000 cicli: 1,5 mm - grado 3 -4 / 100.000 cicli:
4,5 mm - grado 4.



COLOUR MATCHING

Leggere differenze di colore tra una partita e l'altra sono da considerarsi normali e garanzia di riciclo.



POINT OUT!

Il feltro è caratterizzato dalla presenza di piccoli punti, legati al processo di cardatura del feltro tinto in fibra. Le impurità sono più evidenti su feltri chiari e a tinta unita.



CUSTOMIZABLE

Cartella colori speciali disponibile su richiesta.



CATEGORY

Categoria A



ENVIRONMENTAL IMPACT

90% natural wool, 10% polyester
Ecological textile of natural wool felts.

100% Recyclable product respecting the environment.



INDOOR QUALITY

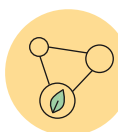
FABRIC | UE: B-s2, d0 - UNI EN 13823:2010+A1:2014
*Optional USA: Class A - ASTM E 84-18
PANELS | B-s1, d0 - UNI EN 13823:2010+A1:2014
B-s2, d0 - UNI EN 13823:2010+A1:2014

Recyclable product respecting the environment for a better indoor air quality.
- Greenguard Gold certified
- VOC compliant to all EU standards

Suitable for Breeam, Leed, Well and Fitwel building certifications.

Rating according to UNI ISO 11654, UNI EN ISO 354 and ASTM C423 - 09a.

Use regularly the vacuum-cleaner with smooth spout, or brushes with soft bristles, or upholstered professional cleaners.



DESIGN COMMITMENT

Martindale Pilling: UNI EN ISO 12945-2:2002
5.000 turns: 1,5 mm - grado 2 / 4,5 mm - grado 3
Martindale Abrasion: UNI EN ISO 12947-1:2000
14.000 cycles: 1,5 mm - grado 3 -4 / 100.000 cicli:
4,5 mm - grado 4.

Slightly differences between dyeing lots are considered normal and recycling guarantee.

Felt is characterized by the presence of small dots, linked to the carding process of the fiber-dyed felt. Impurities are most noticeable on light-colored and solid colored felts.

Special colour charts available upon request.

Category A



DESIGN COMMITMENT

MATERIAL CORE



THICKNESS



Concrete 903

mm 1,5 | gr/mtl 420

mm 3 | gr/mtl 820

mm 4,5 | gr/mtl 1200
**

mm 6 | gr/mtl 1630

mm 8 | gr/mtl 2000



WIDTH



cm 150 ± 5% | " 59 ± 5%

Senza adesivo sul retro / Not-Adhesive back

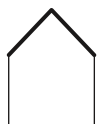


cm 145 usable ± 2% | " 57 ± 2%

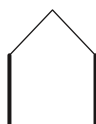
Adesivo sul retro / Adhesive back (see 4,5 mm)**



APPLICATIONS



CEILING



WALL



CURTAIN



FREESTANDING



DESK



FURNITURE



ECOfelt.



Ghost white 955E *



Yellow 34 *



Quartz rose 940



Salvia green 334E



Fresh air 976



Beige 952



Egg 980



Bubble pink 53



Acid green 611E



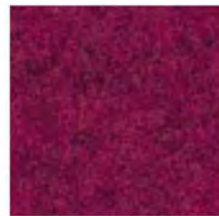
Light blue 914



Caramel 332E



Mustard 54



Pink 988



Cashmere green 89 *



Blue yonder 200



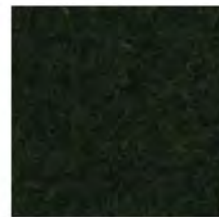
Mushroom 325



Cob orange 997



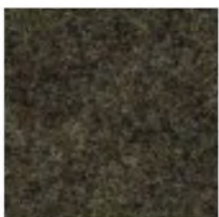
Barolo 602



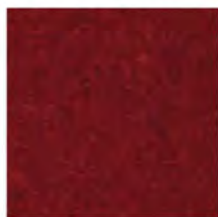
Grassland 937



Avio 333E



Chocolate 352



Orange 971



Violet 921



Tea Green 345



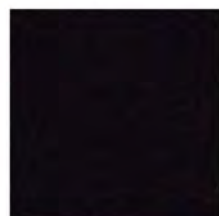
Capri 341



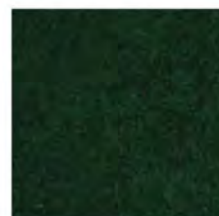
Taupe 511



Red 5



Grape 603



Leaf Green 910



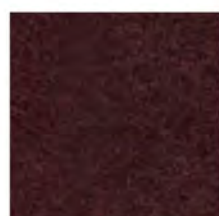
Biggest Splash 41



Brown 605



Salmon 317



Marsala 973



Lagoon 608



Azuleja 318



Rust 604



Pompei 47



Purple 508



Peacock blue 962



Nynph 972



Agate 919



Bordeaux 192



Mauve 601



Chalk 327



Honolulu blue 607



Grey 953E *



Mineral Blue 311



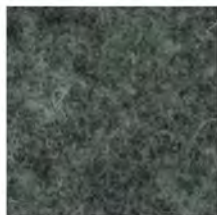
Moonstone 512



Blue 193



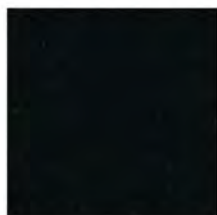
Deep sea blue 963



Concrete 903



Ink 329



Black forest 77



Dark musk 22E



Dark grey 923

*** IN STOCK COLOURS**



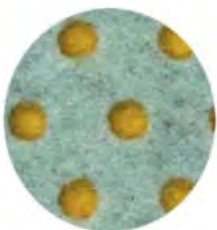
SUPERFAST DELIVERY!

WALL COVERING 4,5 mm - Adesivo sul retro / Adhesive back **



DESIGN YOUR OWN!

* DECOfelt colour chart



POISfelt



B-sided

What's behind?

Sostenibilità . Comfort . Design

La missione di Slalom è quella di partecipare attraverso materiali dalle altissime qualità innovative e tecniche alla creazione di un ambiente sano, dal comfort acustico eccezionale e progettato su misura per le persone. Lo fa attraverso l'impegno per la protezione dell'ambiente e della salute dell'uomo, sviluppando un'ampia gamma di prodotti e soluzioni tailor-made investendo costantemente in funzionalità, durabilità e riciclo.

Sustainability . Comfort . Design

An important mission for Slalom, in compliance with the surrounding environment and people's health. The commitment to protect the environment and human health is a priority in our path to sustainability.

Slalom develops its range from the idea that each product has use, durability and recycling as its key. Slalom develops its range from the idea that each product has use, durability and recycling as its key.

#WorkingForQuality

Company Certification



#SupportingSustainability

Slalom is partner of



MEMBER

#SupportingCulture

PEGGY GUGGENHEIM COLLECTION

#SupportingResearch



QUASAR INSTITUTE FOR ADVANCED DESIGN



#SupportingWomen:

75% Female employees

#SocialResponsibility:

Sustainability Report 2020

#CorporateResponsibility:

Check online our Ethic Code



SLALOM s.r.l.